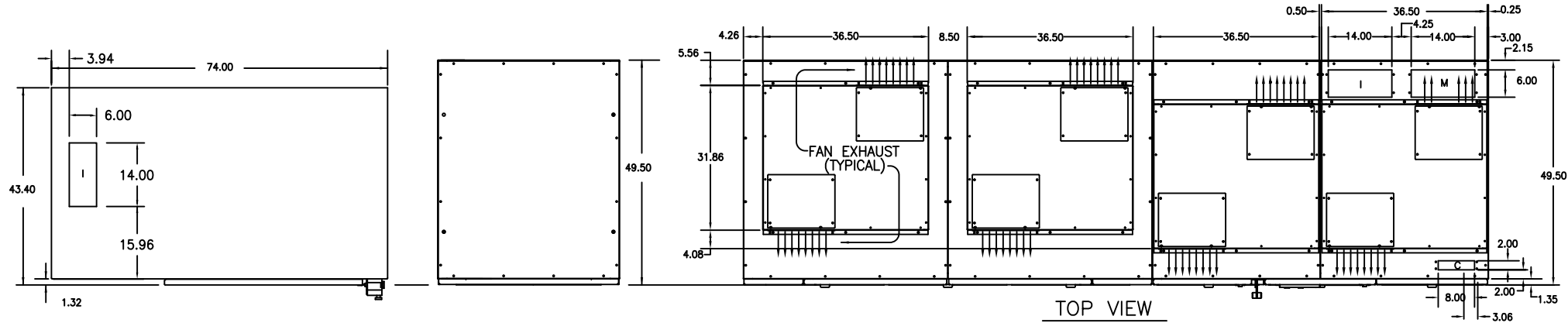
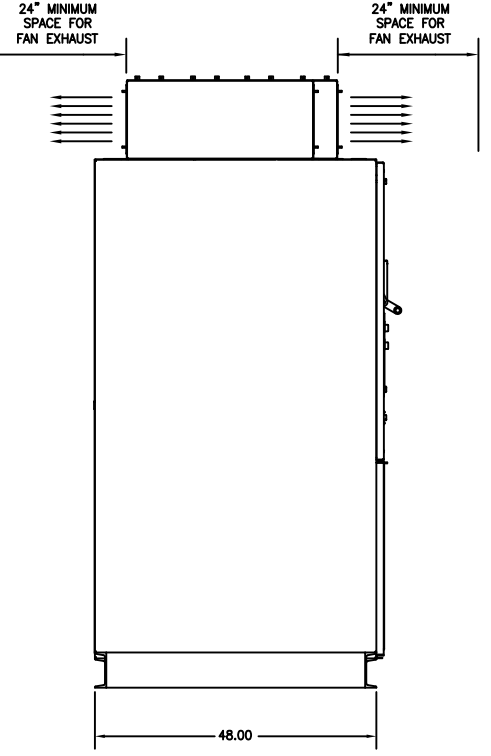


CABLE TERMINATIONS			
ENTRY	INCOMING CABLES	MOTOR LEADS	CONTROL WIRE
TOP	I	M	C
BOTTOM	I	M	C

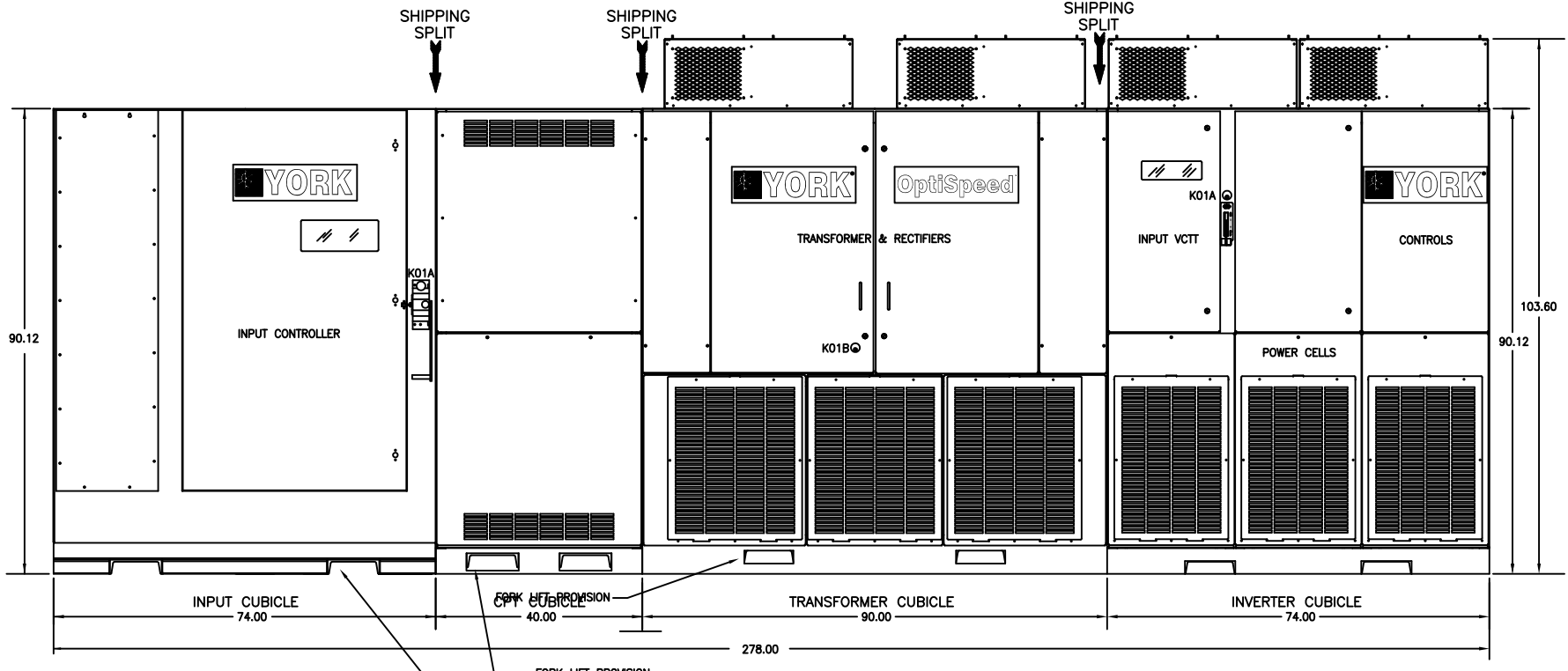
INCOMING TERMINATIONS USE NEMA 4-HOLE PATTERN
MOTOR TERMINATIONS USE NEMA 4-HOLE PATTERN



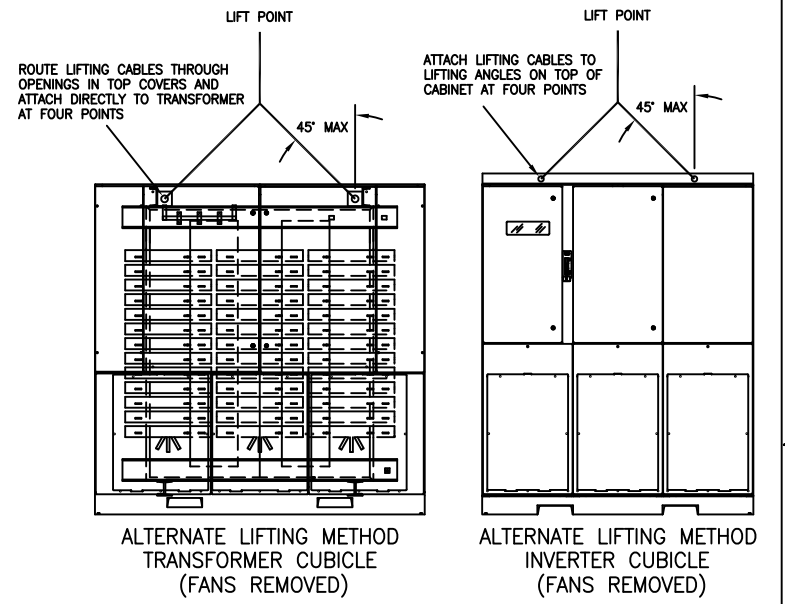
TOP VIEW



LH VIEW

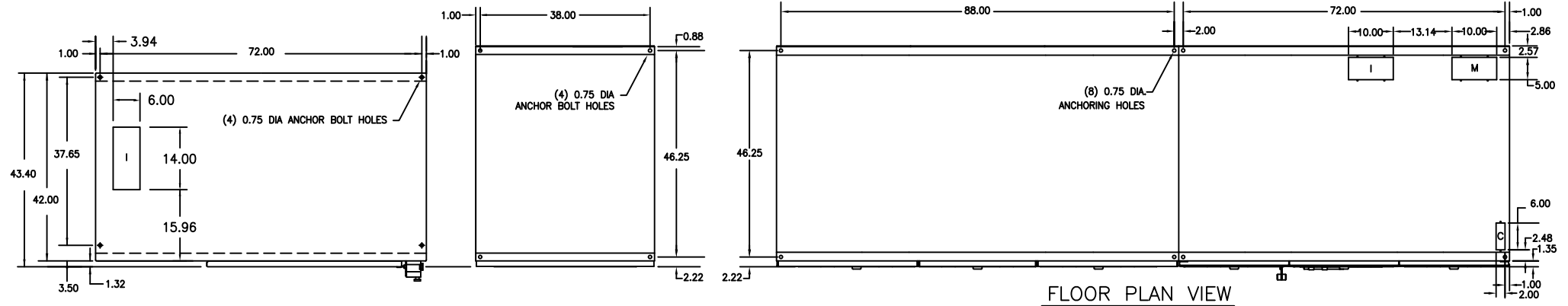


FRONT VIEW



- NOTES**
- ENCLOSURE TYPE: NEMA 1 W/GASKETED DOORS
 - ALL WEIGHTS ARE APPROXIMATE IN LBS
 - ALL DIMS ARE IN INCHES
 - POWER CELLS NEED TO BE REMOVED FOR ACCESS

	2250HP	2500HP
INPUT CUBICLE	2,500 lbs	2,500 lbs
CPT CUBICLE	1,400 lbs	1,400 lbs
TRANSFORMER CUBICLE	12,300 lbs	13,200 lbs
INVERTER CUBICLE	4,500 lbs	4,500 lbs



FLOOR PLAN VIEW

REV. LEV.	DATE	REVISION RECORD	CHG. NO.	DR.	CK.	REV. LEV.	DATE	REVISION RECORD	CHG. NO.	DR.	CK.	REV. LEV.	DATE	REVISION RECORD	CHG. NO.	DR.	CK.
6						13						20					
5						12						19					
4						11						18					
3						10						17					
2						9						16					
1						8						15					
0	06/22/09	FIRST ISSUE				7						14					

ALL PROPRIETARY RIGHTS IN THE SUBJECT MATTER HEREOF ARE RESERVED, AND NO PERMISSION IS GRANTED TO REPRODUCE THIS PRINT IN WHOLE OR IN PART, OR DISCLOSE ANY OF THE INFORMATION UPON IT TO OTHERS WITHOUT WRITTEN RELEASE BY YORK INTERNATIONAL CORPORATION.

YORK INTERNATIONAL CORPORATION
YORK, PA. 17405

OUTLINE ENCLOSURE

DIMENSIONS ARE IN INCHES
DO NOT SCALE
TOLERANCES PER ENG. STD. M-282
WELDING PER ENG. STD. M-30
REF. DWG.

MATERIAL
TYPE _____ ENG. STD. _____
PART NO. _____
CUT SIZE _____

DR. _____ DATE _____ SIZE D CAGE NO. _____
APPR. _____
SCALE: _____

DRAWING NUMBER
1808N630

WT. = _____ LBS. ORG. NO. _____ SHEET 15 of 15