

Tested 5/31/2006 MCD and RP
 Test Condition: Motor Load with sinewave filter

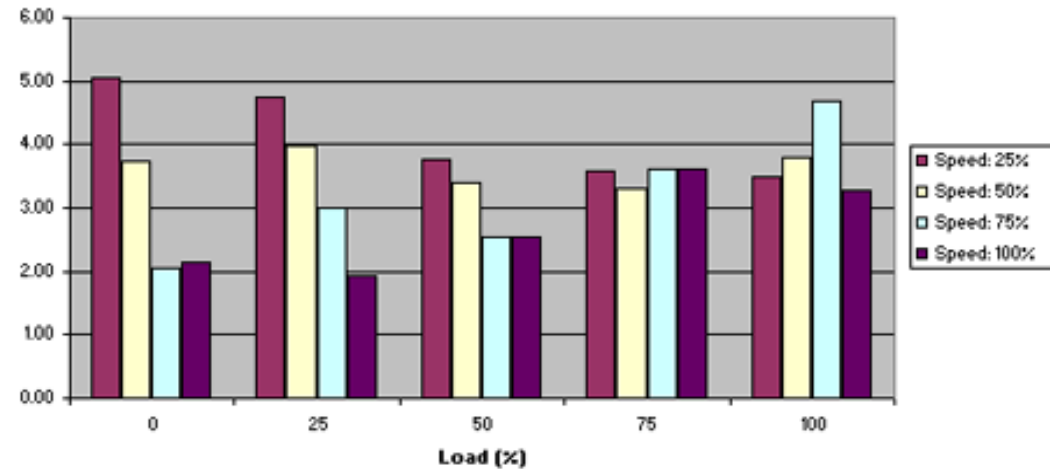
Speed: 25%	Load (%)				
	0	25	50	75	100
Carrier: 2048Hz					
Output voltage (V)	1051	1053	1047	1034	1027
Output Curr (A)	67.0	66.0	100.0	143.2	184.5
Output Power (kW)	57.4	81.3	150.6	223.6	292.4
Output kVA (kVA)	121.8	120.4	181.4	256.3	326.1
Output P.F. (1)	0.470	0.680	0.830	0.872	0.891
Output Voltage T.H.D. (%)	5.05	4.73	3.78	3.57	3.49
Output Current T.H.D. (%)	12.95	19.96	3.16	2.23	1.81

Speed: 50%	Load (%)				
	0	25	50	75	100
Carrier: 2048Hz					
Output voltage (V)	2054	2066	2057	2026	1999
Output Curr (A)	49.4	67.3	102.9	145.8	185.7
Output Power (kW)	78.5	167.4	309.5	453.7	581.2
Output kVA (kVA)	175.8	240.8	366.7	512.0	642.9
Output P.F. (1)	0.446	0.695	0.844	0.886	0.904
Output Voltage T.H.D. (%)	3.72	3.98	3.41	3.30	3.80
Output Current T.H.D. (%)	5.51	6.30	4.28	3.01	3.08

Speed: 75%	Load (%)				
	0	25	50	75	100
Carrier: 2048Hz					
Output voltage (V)	3122	3102	3084	3074	3066
Output Curr (A)	51.2	66.5	102.4	144.0	182.4
Output Power (kW)	120.1	248.2	461.6	677.8	875.1
Output kVA (kVA)	276.7	357.3	547.2	766.9	968.5
Output P.F. (1)	0.434	0.695	0.844	0.884	0.904
Output Voltage T.H.D. (%)	2.04	2.99	2.55	3.62	4.68
Output Current T.H.D. (%)	3.98	4.29	2.84	2.18	1.93

Speed: 100%	Load (%)				
	0	25	50	75	100
Carrier: 2048Hz					
Output voltage (V)	4138	4141	4117	4093	4086
Output Curr (A)	50.9	67.7	103.5	145.1	183.7
Output Power (kW)	157.0	337.2	621.6	908.0	1175.0
Output kVA (kVA)	364.9	485.6	738.3	1028.5	1300.3
Output P.F. (1)	0.430	0.694	0.842	0.883	0.904
Output Voltage T.H.D. (%)	2.15	1.92	2.55	3.62	3.28
Output Current T.H.D. (%)	4.38	3.40	2.64	2.53	1.93

1500 HP MTX
 Output Voltage Harmonics
 With Sinewave Filter



1500 HP MTX
 Output Current Harmonics
 With SW Filter

