

035-18685 SHT 1
REV D

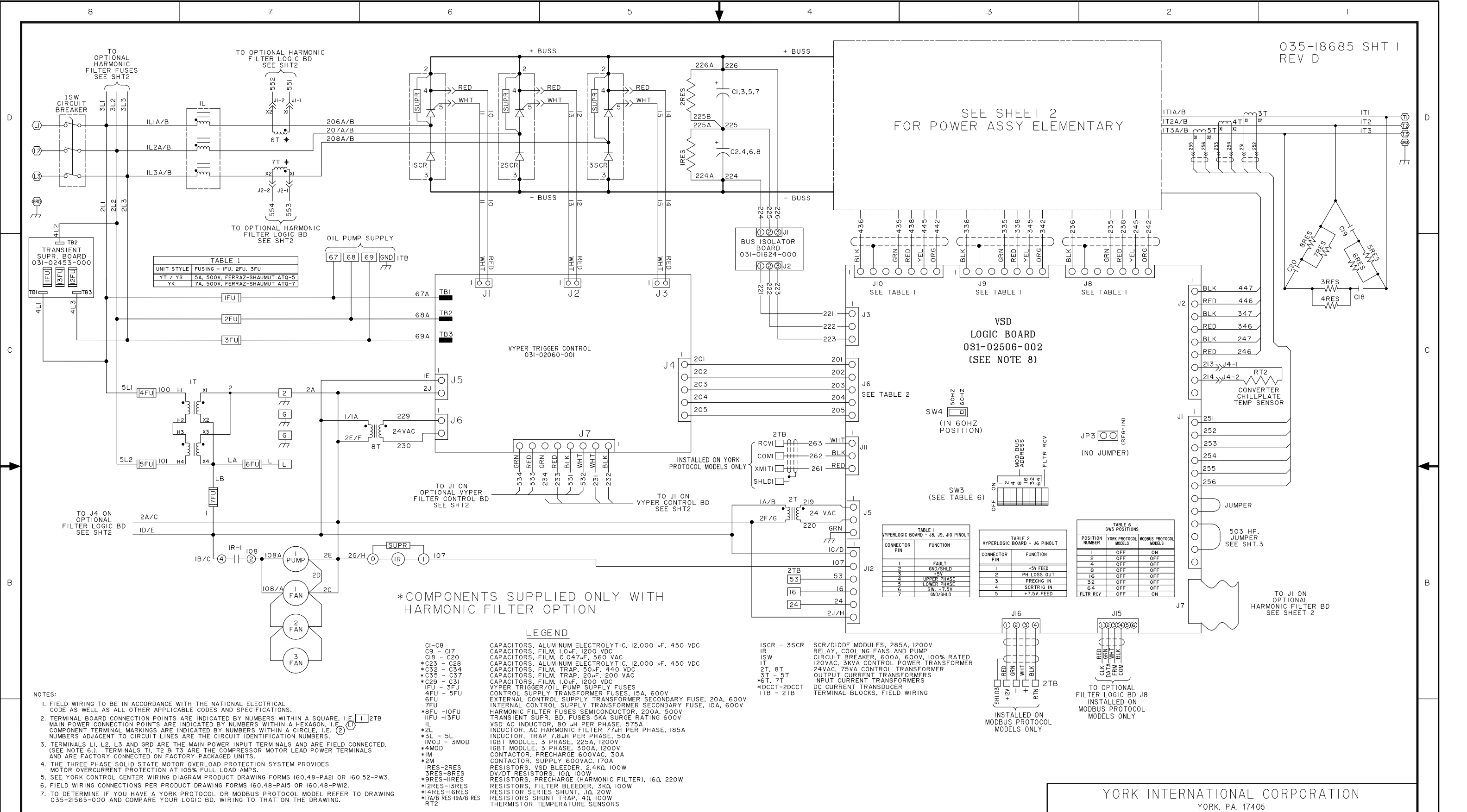


TABLE 1
UNIT STYLE FUSING - 1FU, 2FU, 3FU

YT / YS	5A, 500V, FERRAZ-SHAUMUT ATO-5
YK	7A, 500V, FERRAZ-SHAUMUT ATO-7

*COMPONENTS SUPPLIED ONLY WITH HARMONIC FILTER OPTION

LEGEND

- CI-CB CAPACITORS, ALUMINUM ELECTROLYTIC, 12,000 μ F, 450 VDC
- C9 - C17 CAPACITORS, FILM, 1.0 μ F, 1200 VDC
- C18 - C20 CAPACITORS, FILM, 0.047 μ F, 560 VAC
- *C23 - C28 CAPACITORS, ALUMINUM ELECTROLYTIC, 12,000 μ F, 450 VDC
- *C32 - C34 CAPACITORS, FILM, TRAP, 50 μ F, 440 VDC
- *C35 - C37 CAPACITORS, FILM, TRAP, 20 μ F, 200 VAC
- *C29 - C31 CAPACITORS, FILM, 1.0 μ F, 1200 VDC
- IFU - 3FU VYPER TRIGGER/OIL PUMP SUPPLY FUSES
- 4FU - 5FU CONTROL SUPPLY TRANSFORMER FUSES, 15A, 600V
- 6FU EXTERNAL CONTROL SUPPLY TRANSFORMER SECONDARY FUSE, 20A, 600V
- 7FU INTERNAL CONTROL SUPPLY TRANSFORMER SECONDARY FUSE, 10A, 600V
- *8FU -10FU HARMONIC FILTER FUSES SEMICONDUCTOR, 200A, 500V
- *11FU -13FU HARMONIC FILTER FUSES SEMICONDUCTOR, 200A, 500V
- IL IGBT MODULE, 3 PHASE, 225A, 1200V
- *IL IGBT MODULE, 3 PHASE, 300A, 1200V
- *3L - 5L CONTACTOR, PRECHARGE 600VAC, 30A
- IM CONTACTOR, SUPPLY 600VAC, 170A
- *IRES -2RES RESISTORS, VSD BLEEDER, 2.4K Ω , 100W
- *3RES -8RES RESISTORS, PRECHARGE (HARMONIC FILTER), 16 Ω , 220W
- *9RES -13RES RESISTORS, FILTER BLEEDER, 3K Ω , 100W
- *12RES -13RES RESISTOR SERIES SHUNT, 1 Ω , 20W
- *14RES -16RES RESISTORS SHUNT TRAP, 1 Ω , 100W
- *17A/B RES-19A/B RES THERMISTOR TEMPERATURE SENSORS
- RT2

- NOTES:
- FIELD WIRING TO BE IN ACCORDANCE WITH THE NATIONAL ELECTRICAL CODE AS WELL AS ALL OTHER APPLICABLE CODES AND SPECIFICATIONS.
 - TERMINAL BOARD CONNECTION POINTS ARE INDICATED BY NUMBERS WITHIN A SQUARE, I.E. 1 2TB. MAIN POWER CONNECTION POINTS ARE INDICATED BY NUMBERS WITHIN A HEXAGON, I.E. 2 1. COMPONENT TERMINAL MARKINGS ARE INDICATED BY NUMBERS WITHIN A CIRCLE, I.E. 3 2. NUMBERS ADJACENT TO CIRCUIT LINES ARE THE CIRCUIT IDENTIFICATION NUMBERS.
 - TERMINALS L1, L2, L3 AND GRD ARE THE MAIN POWER INPUT TERMINALS AND ARE FIELD CONNECTED. (SEE NOTE 6.). TERMINALS T1, T2 & T3 ARE THE COMPRESSOR MOTOR LEAD POWER TERMINALS AND ARE FACTORY CONNECTED ON FACTORY PACKAGED UNITS.
 - THE THREE PHASE SOLID STATE MOTOR OVERLOAD PROTECTION SYSTEM PROVIDES MOTOR OVERCURRENT PROTECTION AT 105% FULL LOAD AMPS.
 - SEE YORK CONTROL CENTER WIRING DIAGRAM PRODUCT DRAWING FORMS 160.48-PA21 OR 160.52-PW3.
 - FIELD WIRING CONNECTIONS PER PRODUCT DRAWING FORMS 160.48-PA15 OR 160.48-PW12.
 - TO DETERMINE IF YOU HAVE A YORK PROTOCOL OR MODBUS PROTOCOL MODEL REFER TO DRAWING 035-21565-000 AND COMPARE YOUR LOGIC BD. WIRING TO THAT ON THE DRAWING.

TABLE 1
VYPERLOGIC BOARD - J8, J9, J10 PINOUT

CONNECTOR PIN	FUNCTION
1	FAULT
2	GND/SHLD
3	+5V
4	UPPER PHASE
5	LOWER PHASE
6	SW, +7.5V
7	GND/SHLD

TABLE 2
VYPERLOGIC BOARD - J6 PINOUT

CONNECTOR PIN	FUNCTION
1	+5V FEED
2	PH LOSS OUT
3	PREG IN
4	SCRTRIG IN
5	+7.5V FEED

TABLE 6
SW3 POSITIONS

POSITION NUMBER	YORK PROTOCOL MODELS	MODBUS PROTOCOL MODELS
1	OFF	ON
2	OFF	OFF
4	OFF	OFF
8	OFF	OFF
16	OFF	OFF
32	OFF	OFF
64	OFF	OFF
FLTR RCY	OFF	ON

YORK INTERNATIONAL CORPORATION
YORK, PA. 17405

DR. K.S. ROGERS
APPR. S. SLOTHOWER
SCALE: N.T.S.

DATE
09-17-02
12-06-02

SIZE
D

CAGE NO
66935

DRAWING NUMBER
035-18685-000

WT. = LBS. ORIG. NO. SHEET 1 OF 3

REV. NO.	DATE	REVISION RECORD	CHG. NO.	DR.	CK.	REV. NO.	DATE	REVISION RECORD	CHG. NO.	DR.	CK.	REV. NO.	DATE	REVISION RECORD	CHG. NO.	DR.	CK.	REV. NO.	DATE	REVISION RECORD	CHG. NO.	DR.	CK.
-	NEW		0702			D	10-26-07	SEE SHEETS 2 AND 3 FOR REVISIONS.	0797	CBH	MWM												
A	03-28-05	REVISED WIRING FOR 4FU AND 5FU AT C-8: RATING FOR C18 - C20 WAS 0.1 μ F, 16000 VAC: ADDED SUPPRESSORS AT D-5 & 6.	0705	CBH	MST																		
B	04-25-05	IRES - 2RES RATING WAS 2K Ω AT B-2.	0703	CBH	MST																		
C	10-18-06	CHANGED LOGIC BD. TO INCLUDE MODBUS: ADDED NOTE 7: REVISED LEGEND FOR I7-I9RES. WAS 2Q.	0809	KSR	MST																		