

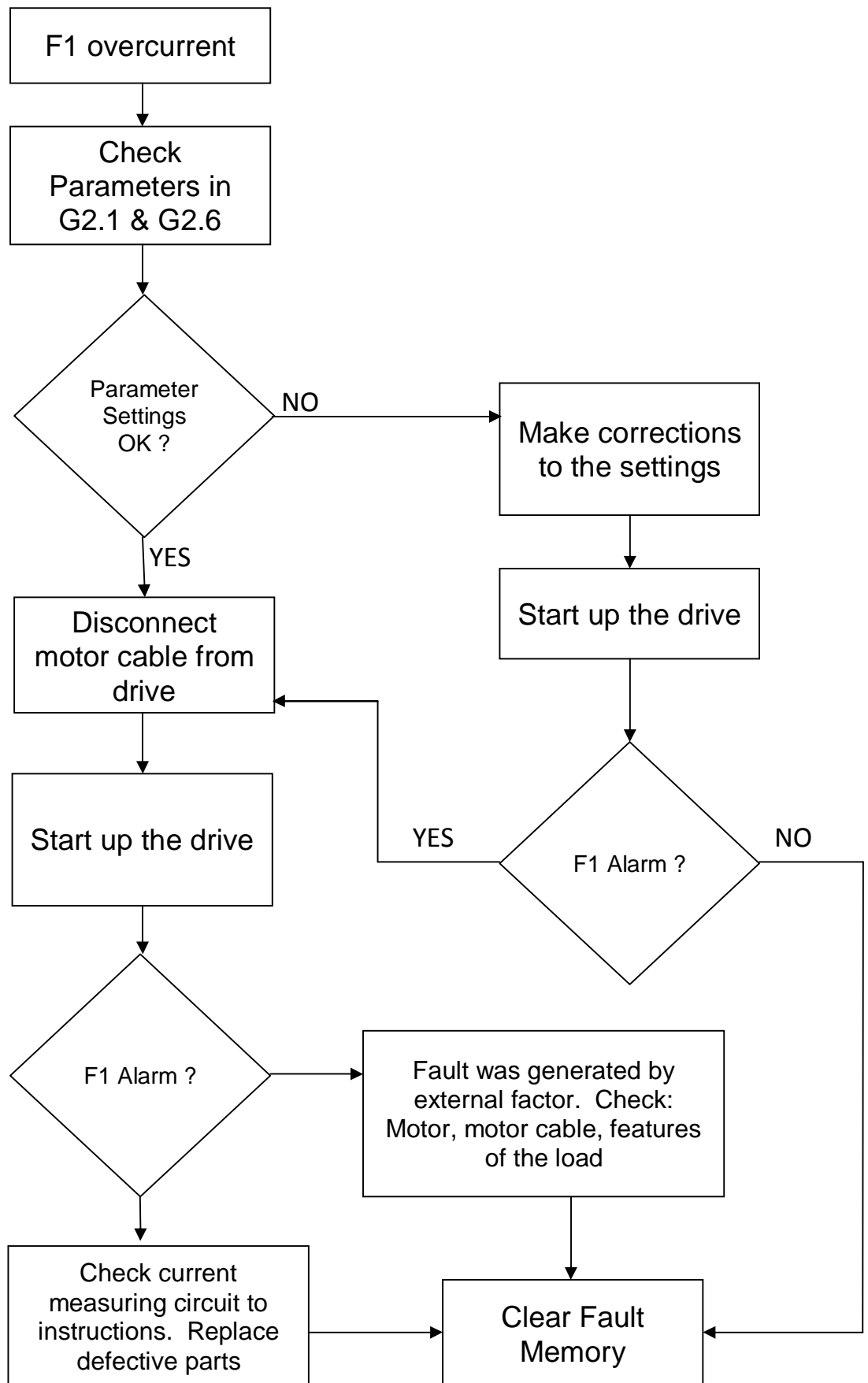
Eaton LCX9000

Drive Fault Code

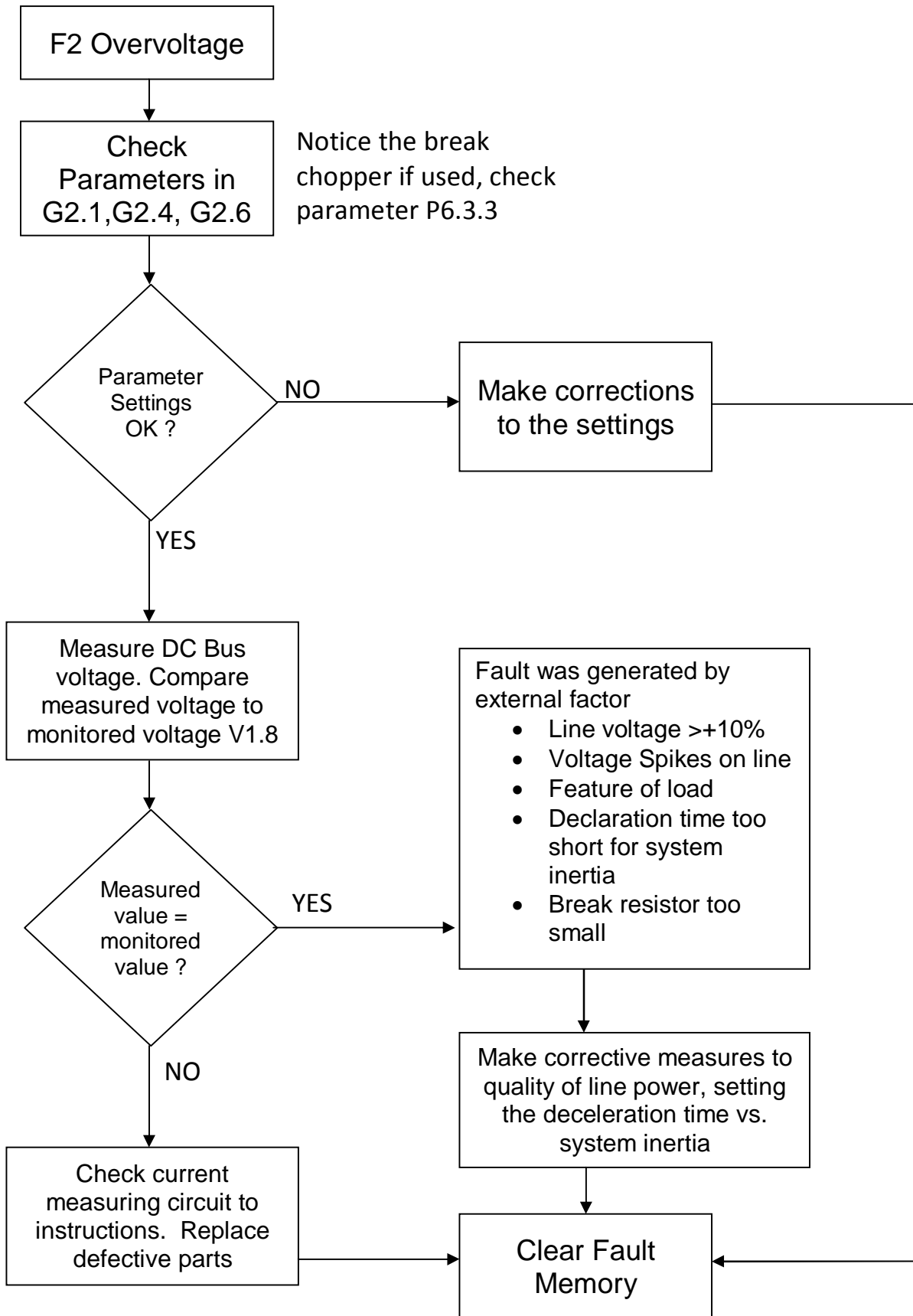
January 2012

Chee Bong

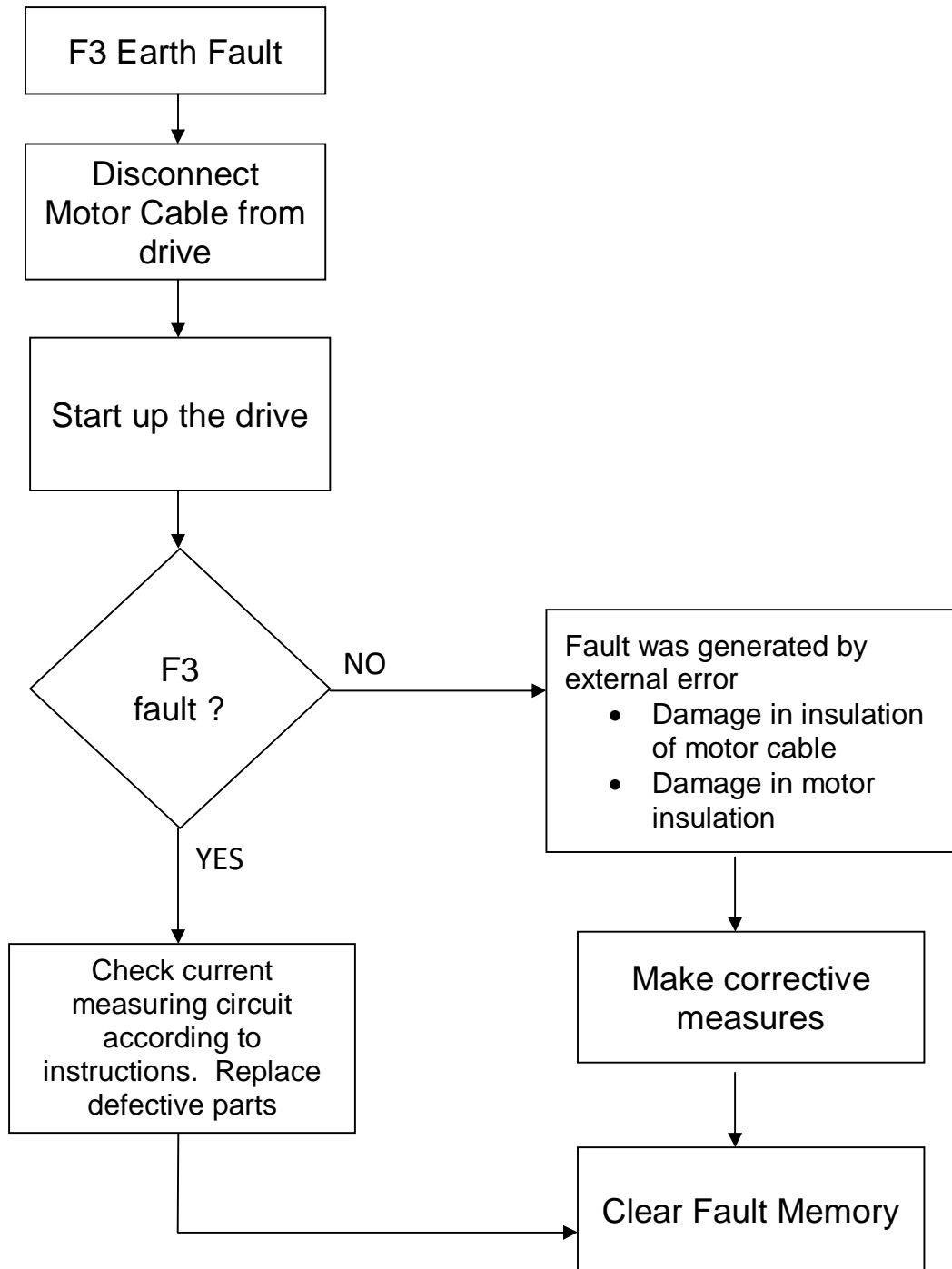
F1-Overcurrent



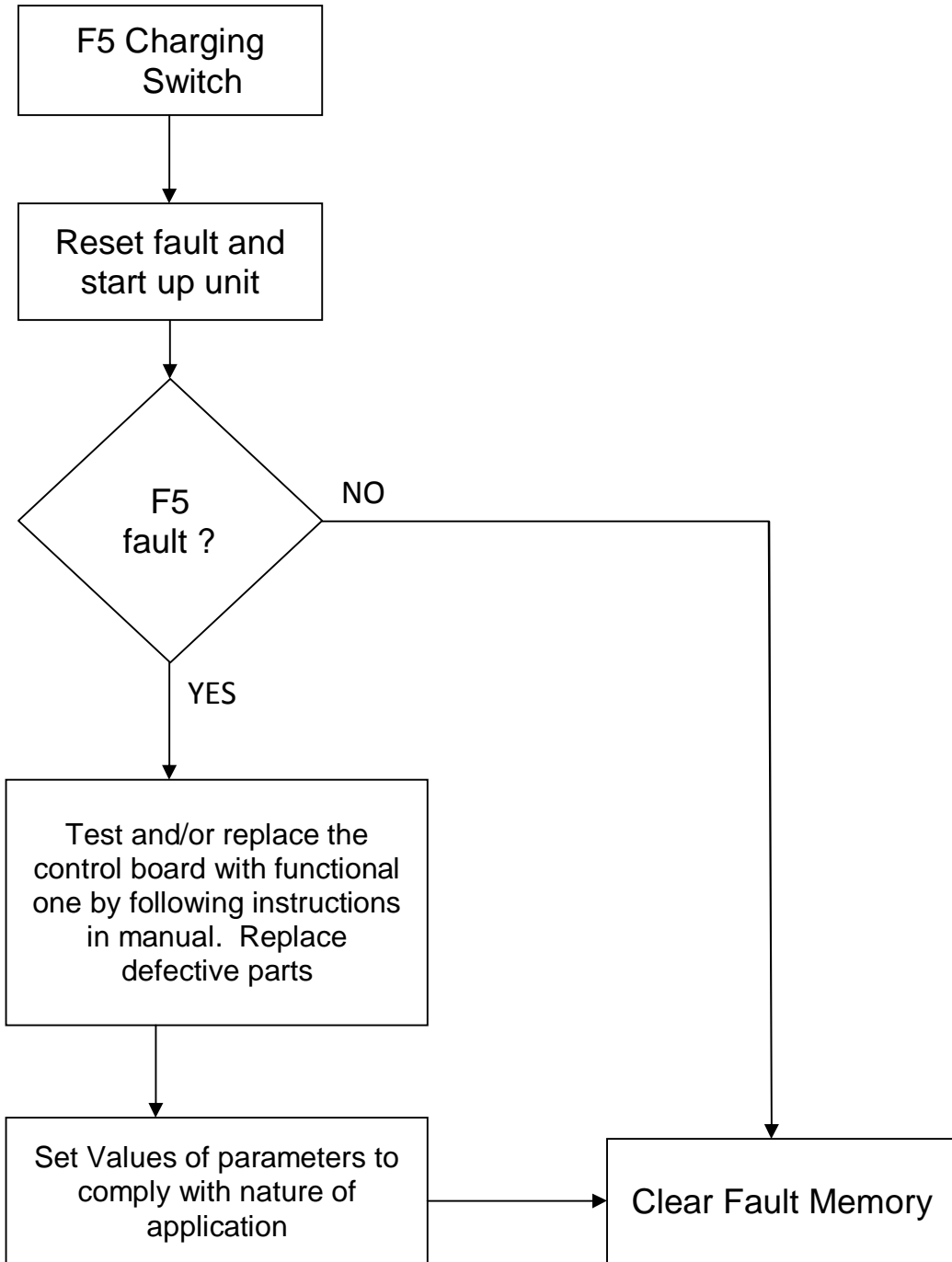
F2 -- Overvoltage



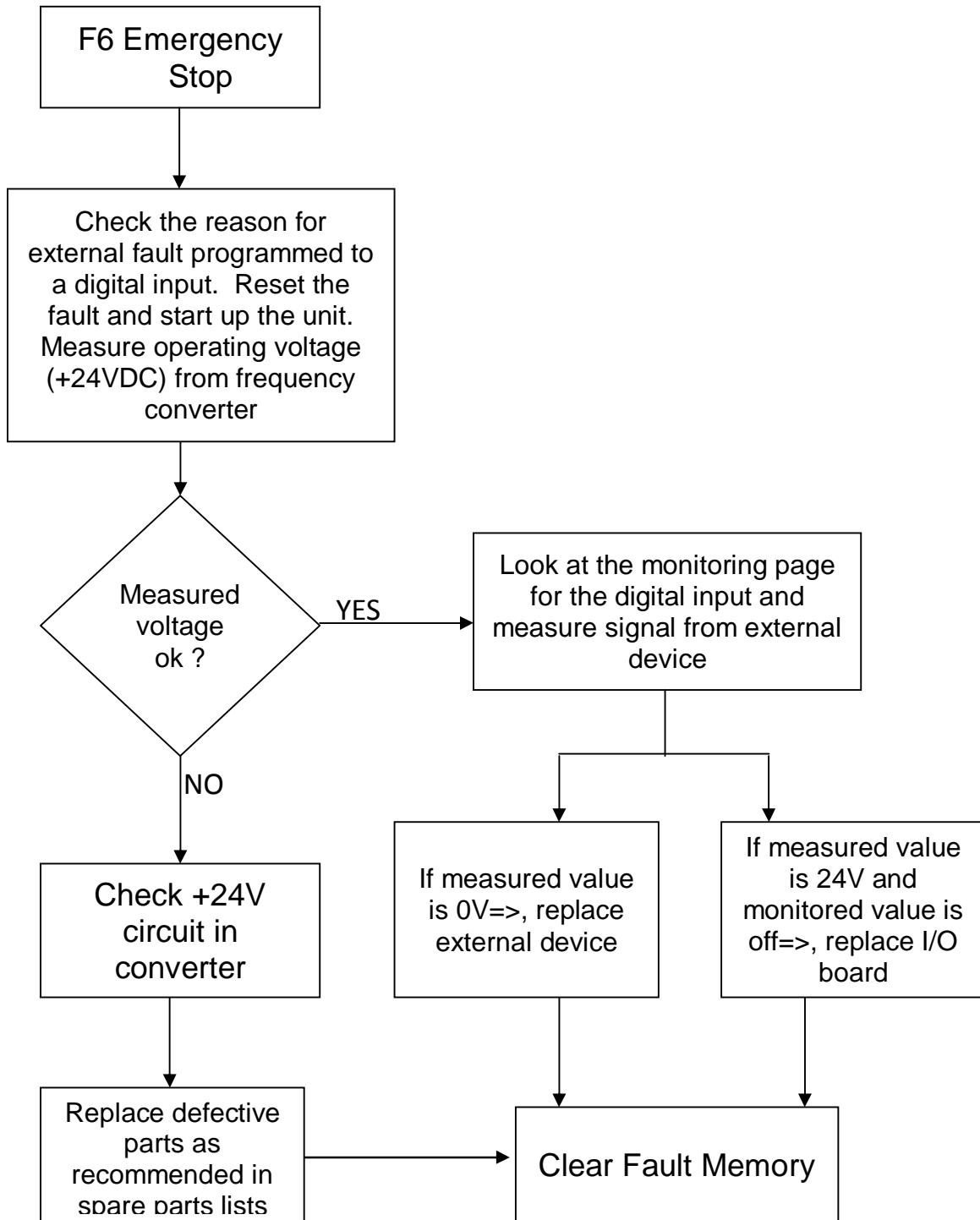
F3 – Earth Fault



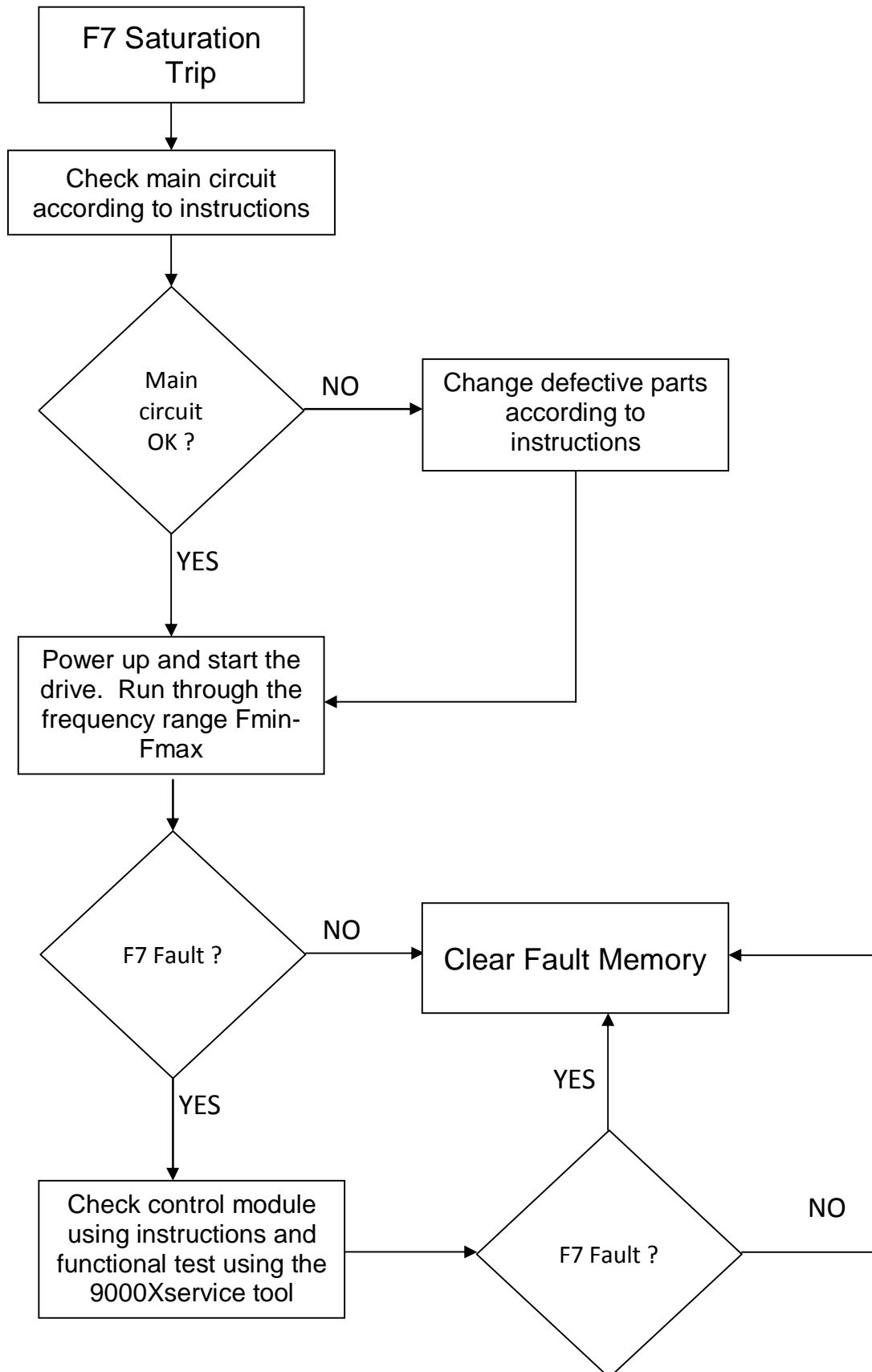
F5 – Charging Switch



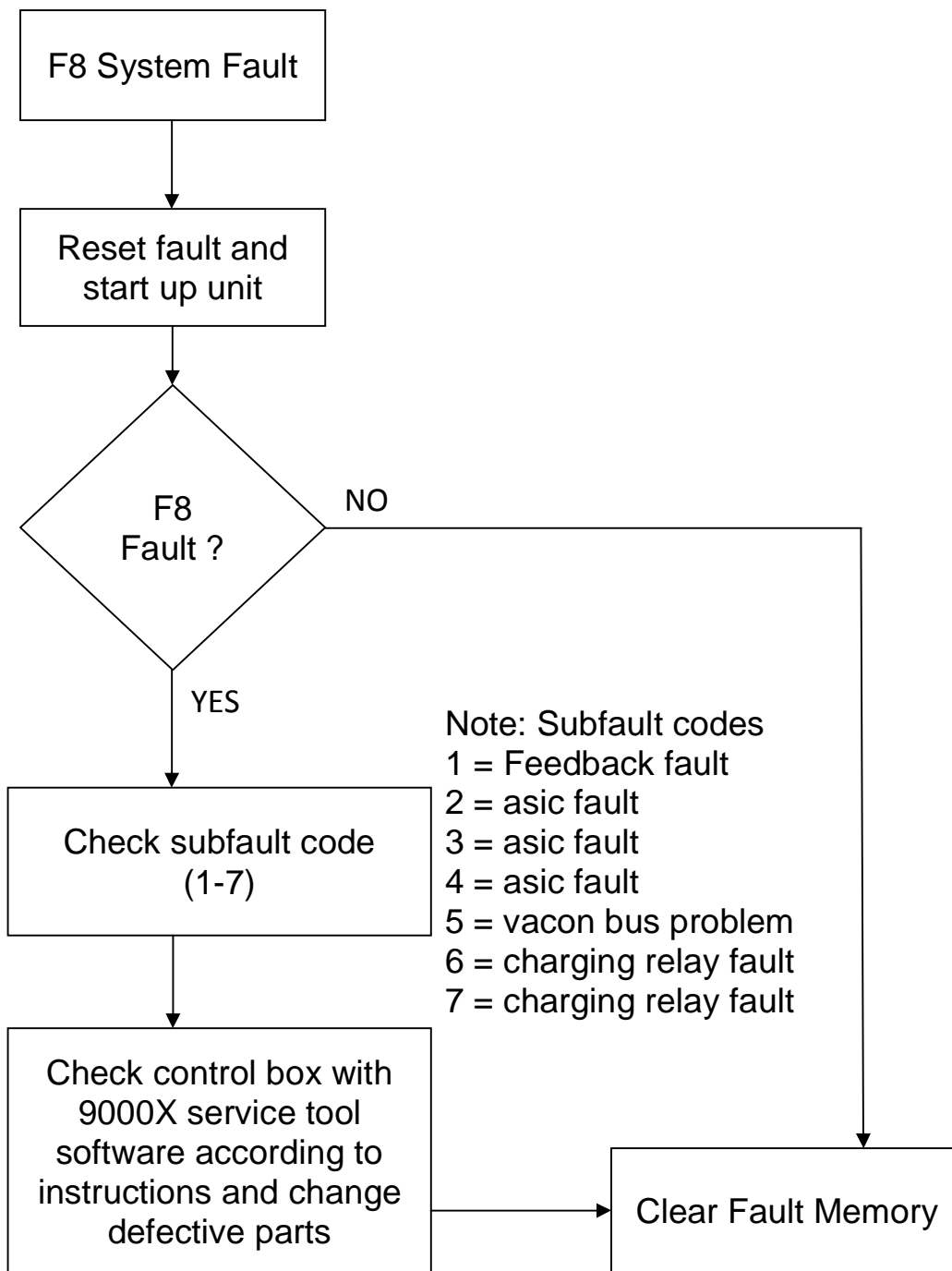
F6 – Emergency Stop



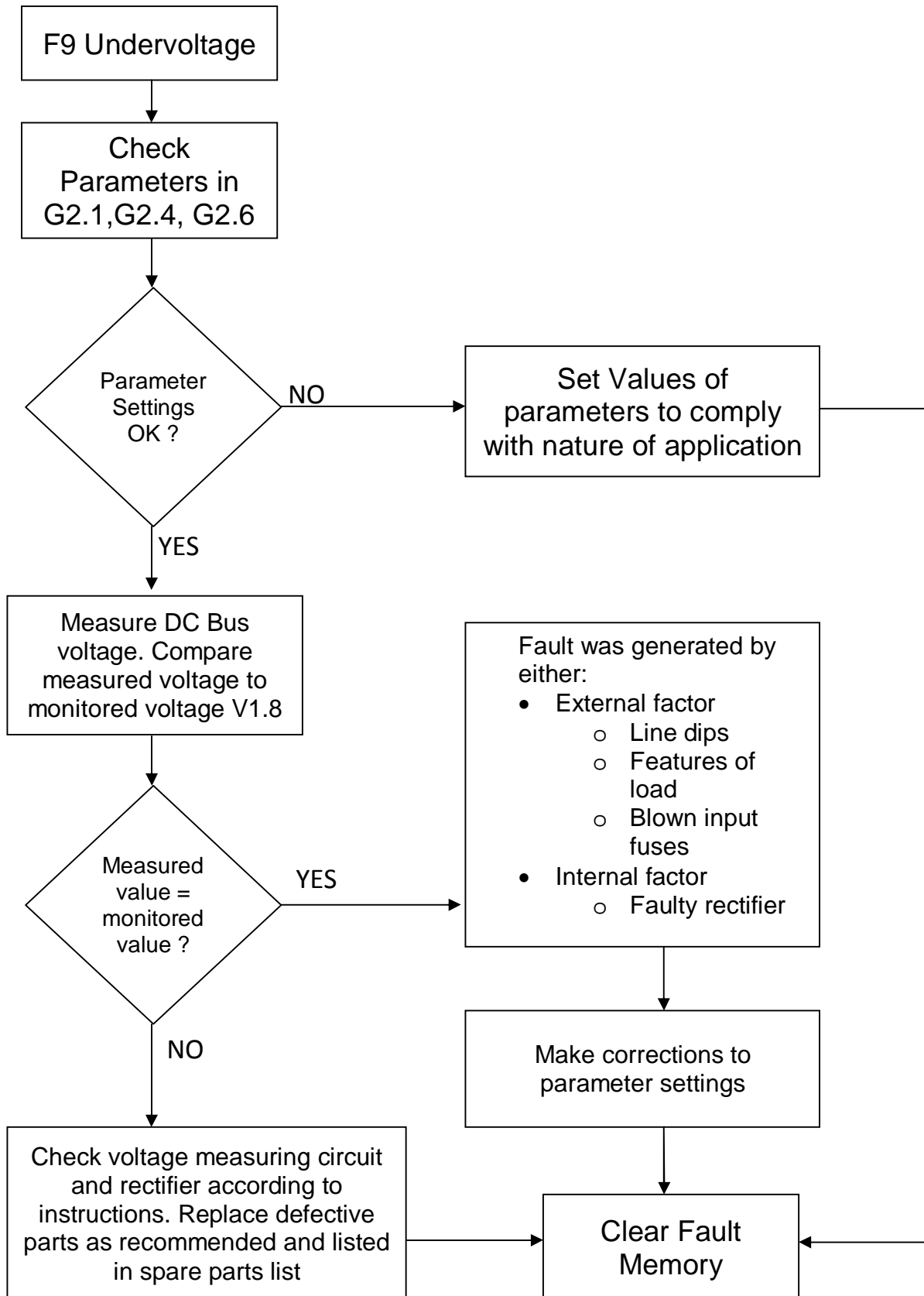
F7 – Saturation Trip



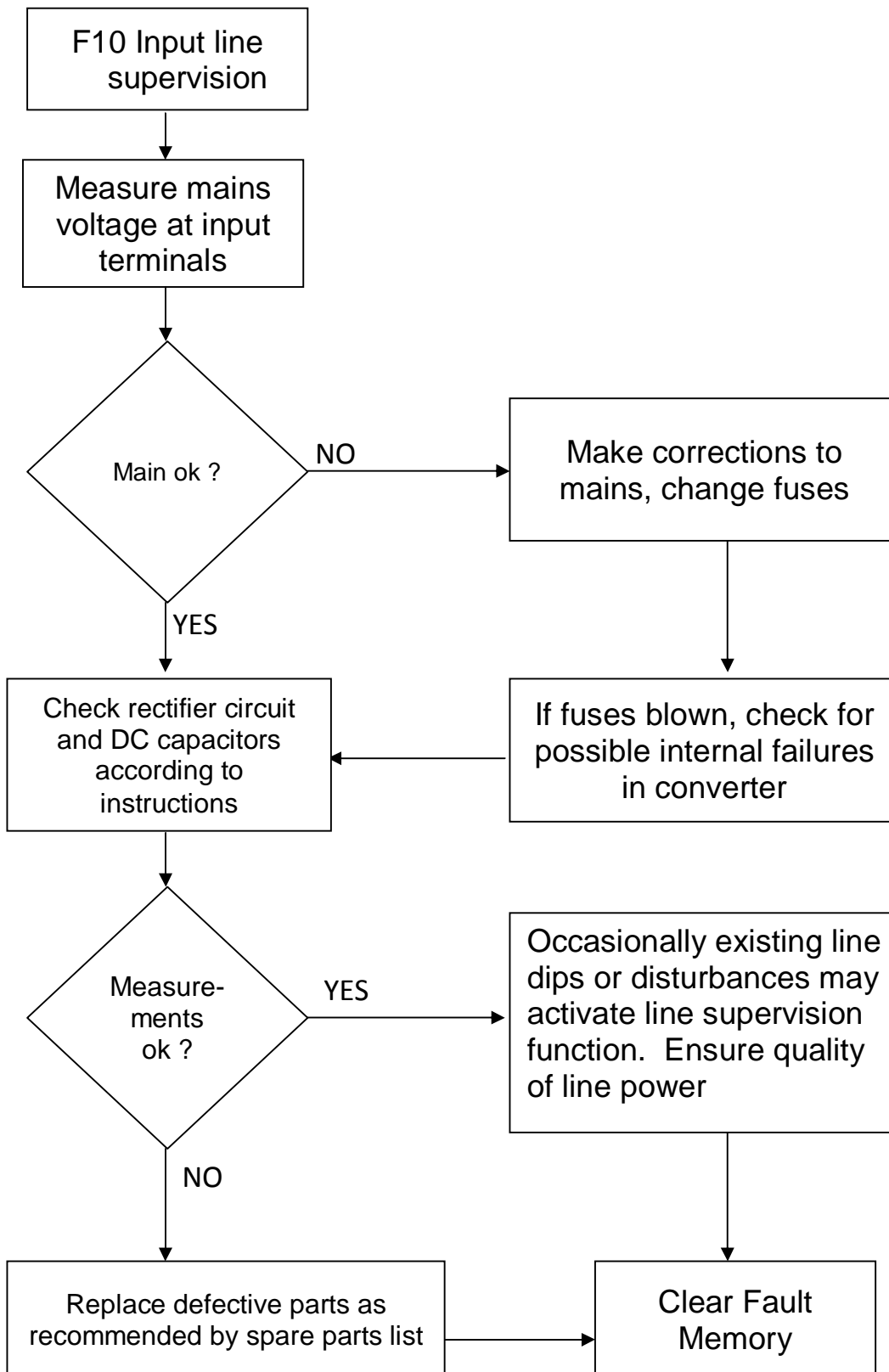
F8 – System Fault



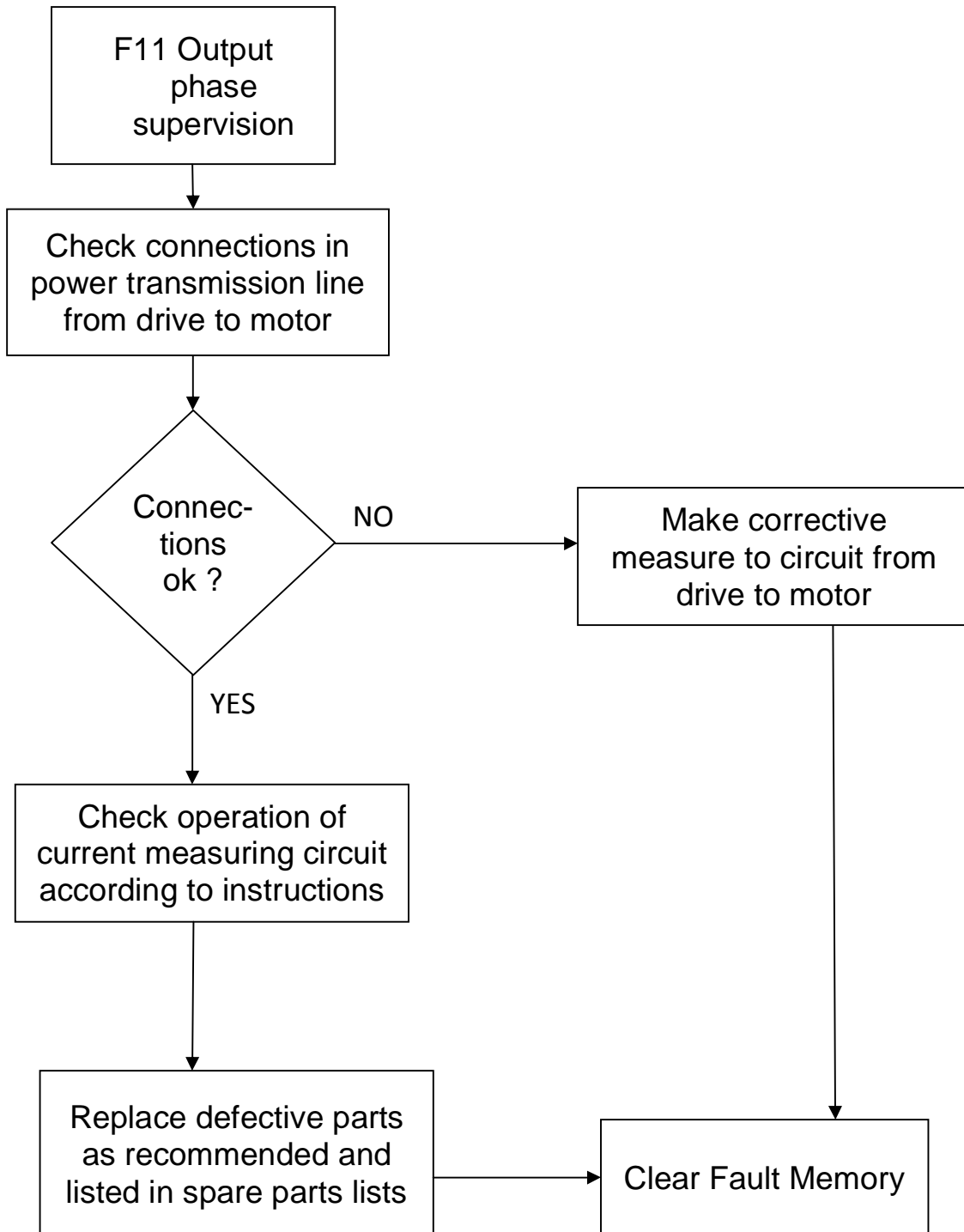
F9 – Undervoltage



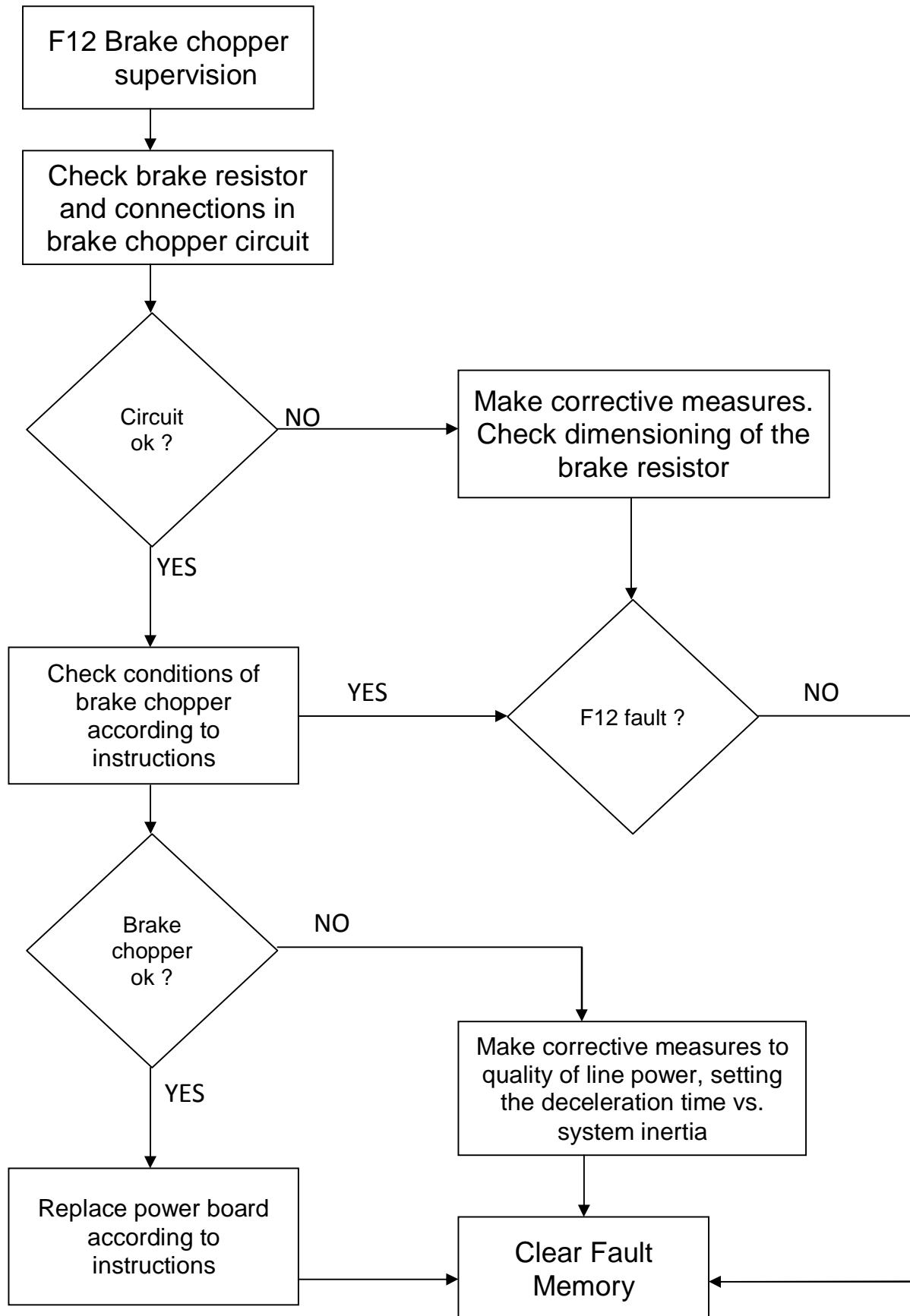
F10 – Input line supervision



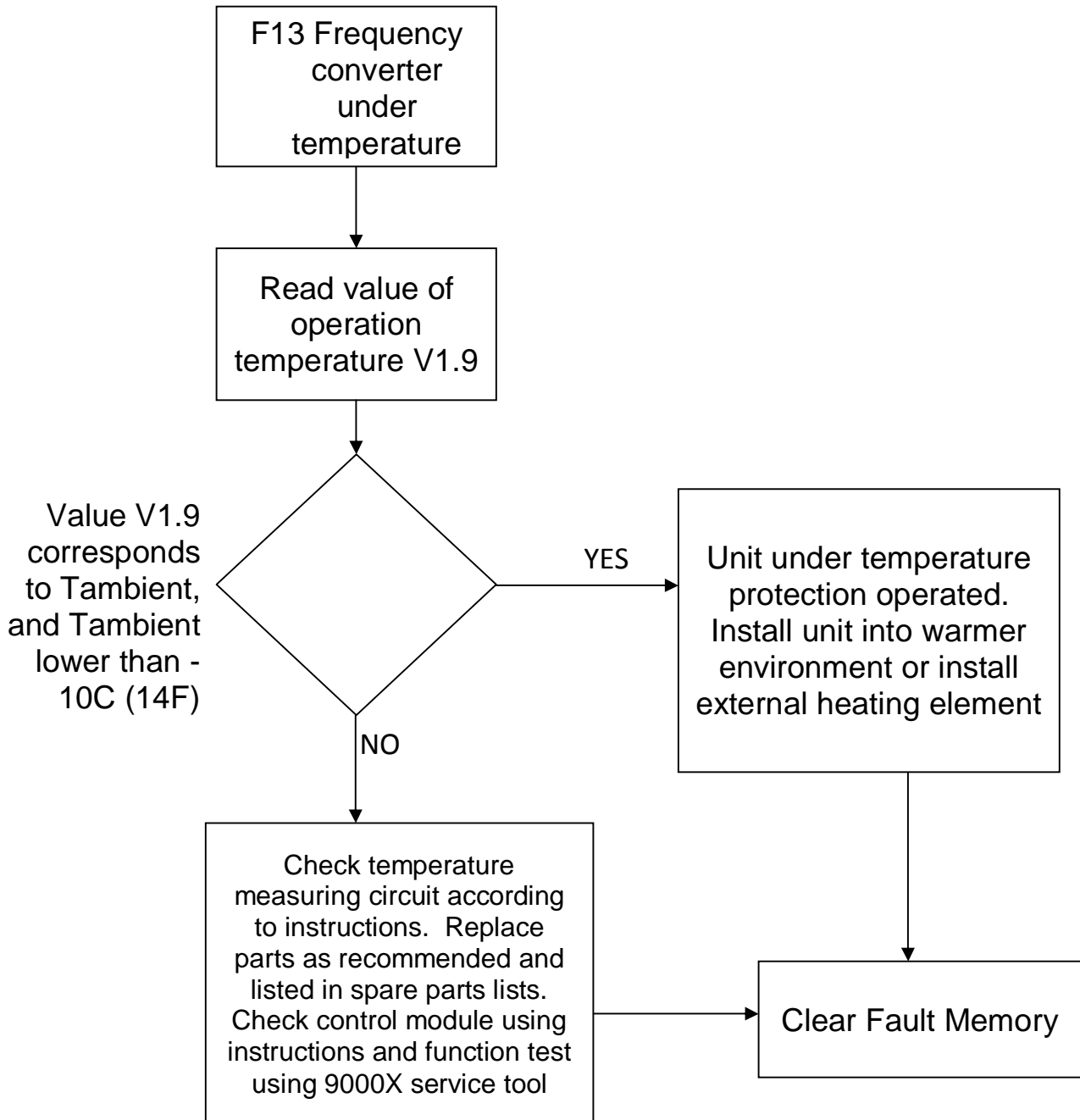
F11 – Output Phase Supervision



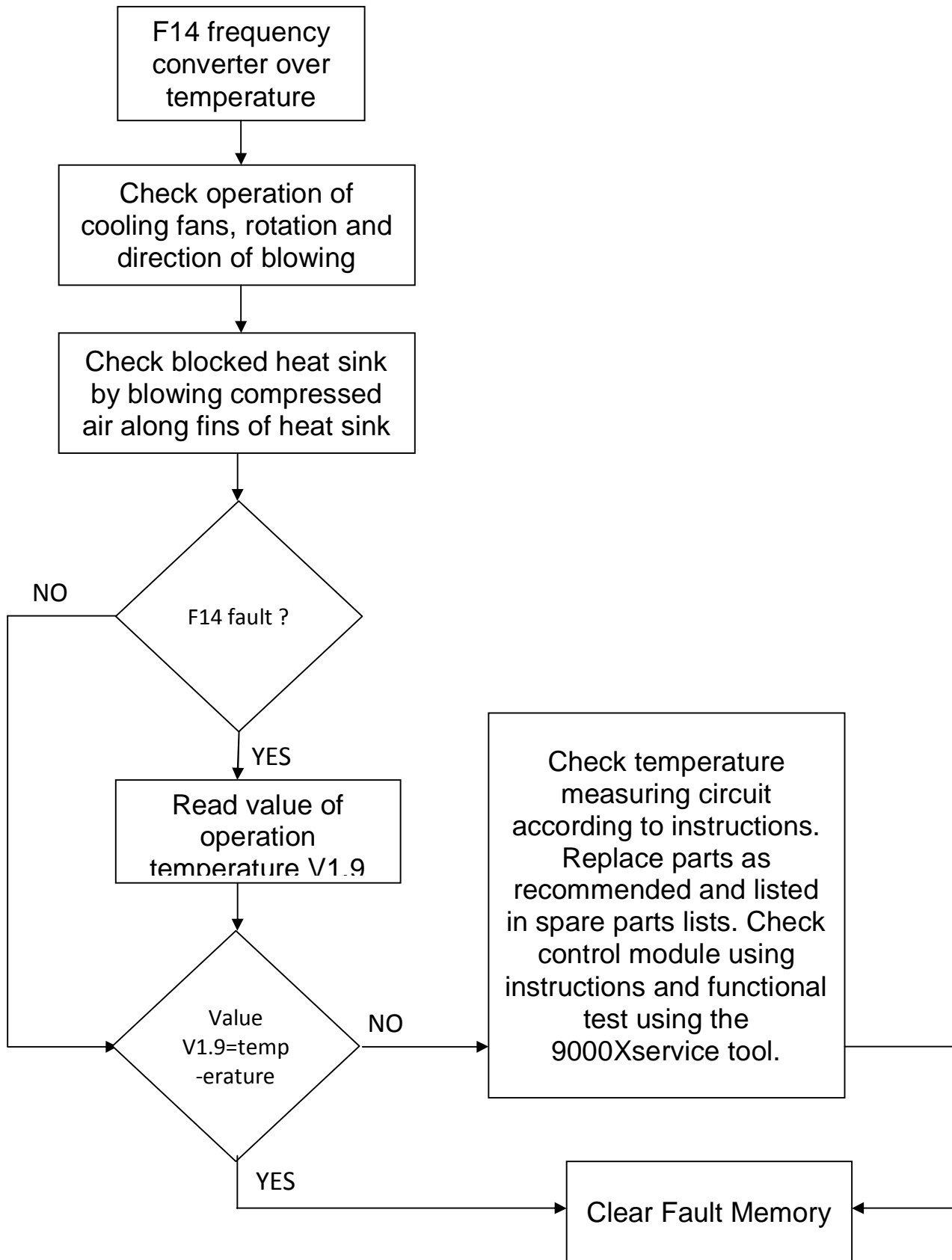
F12 – Brake chopper supervision



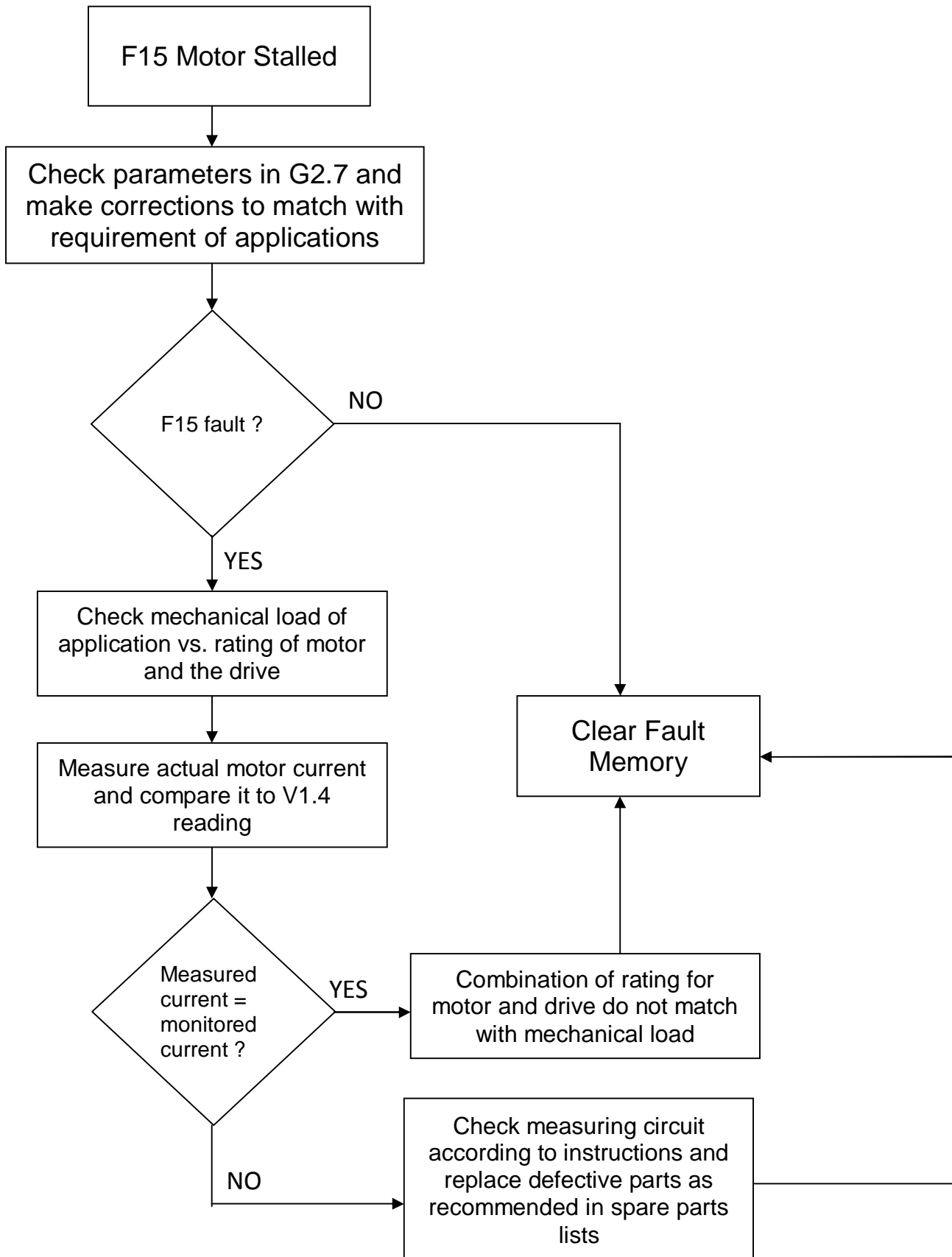
F13 – Frequency converter under temperature



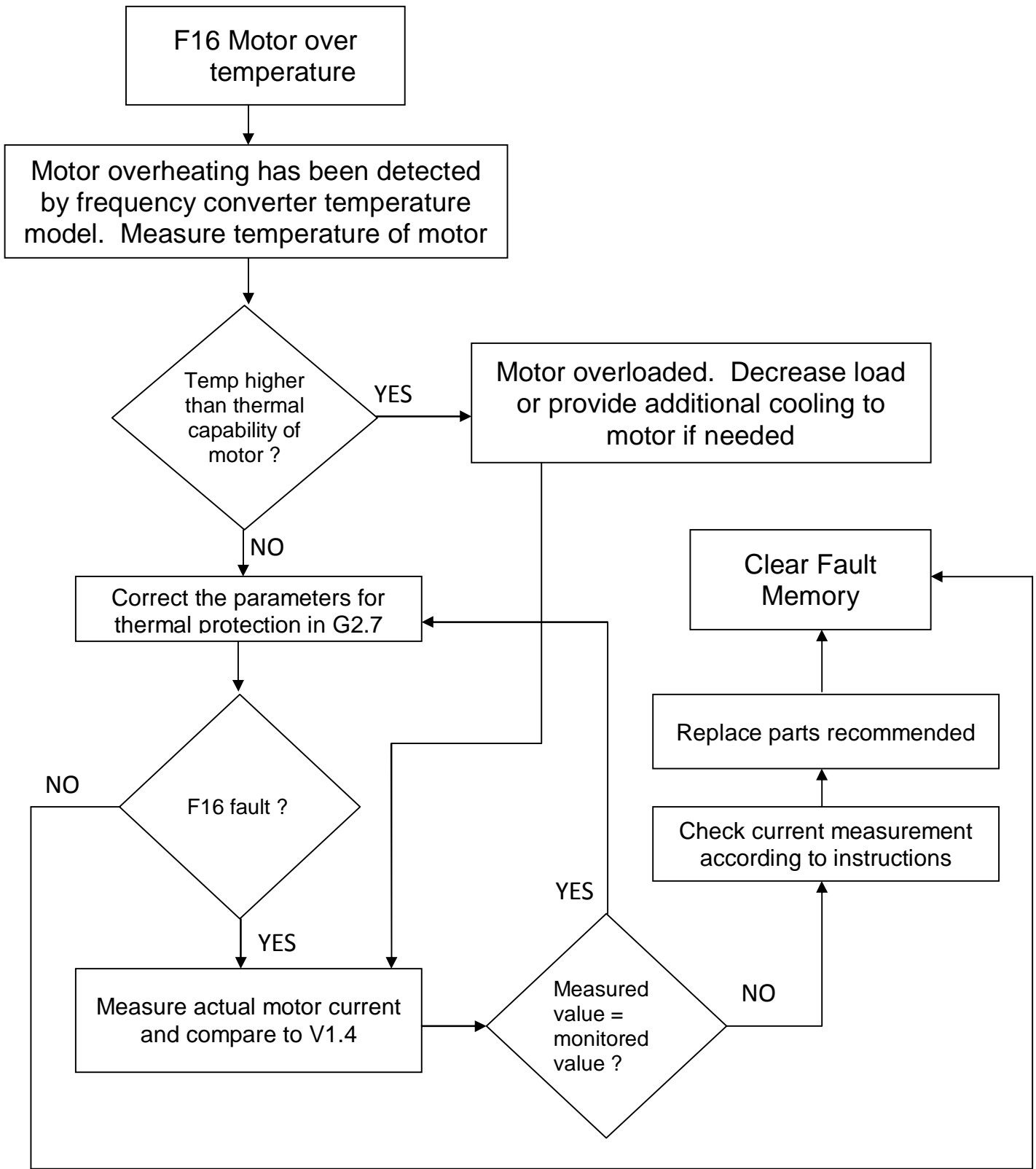
F14 – Frequency converter over temperature



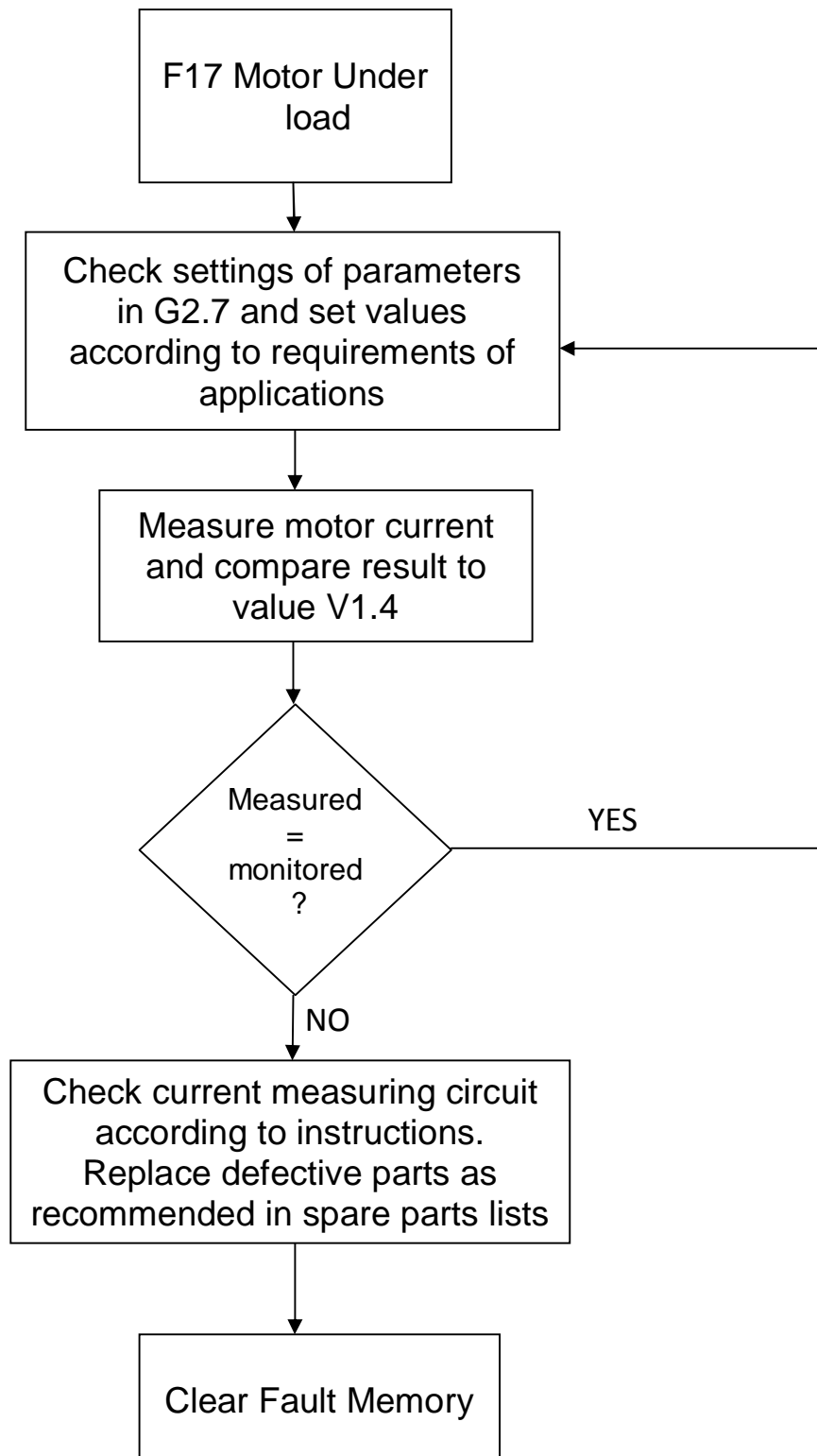
F15 – Motor Stalled



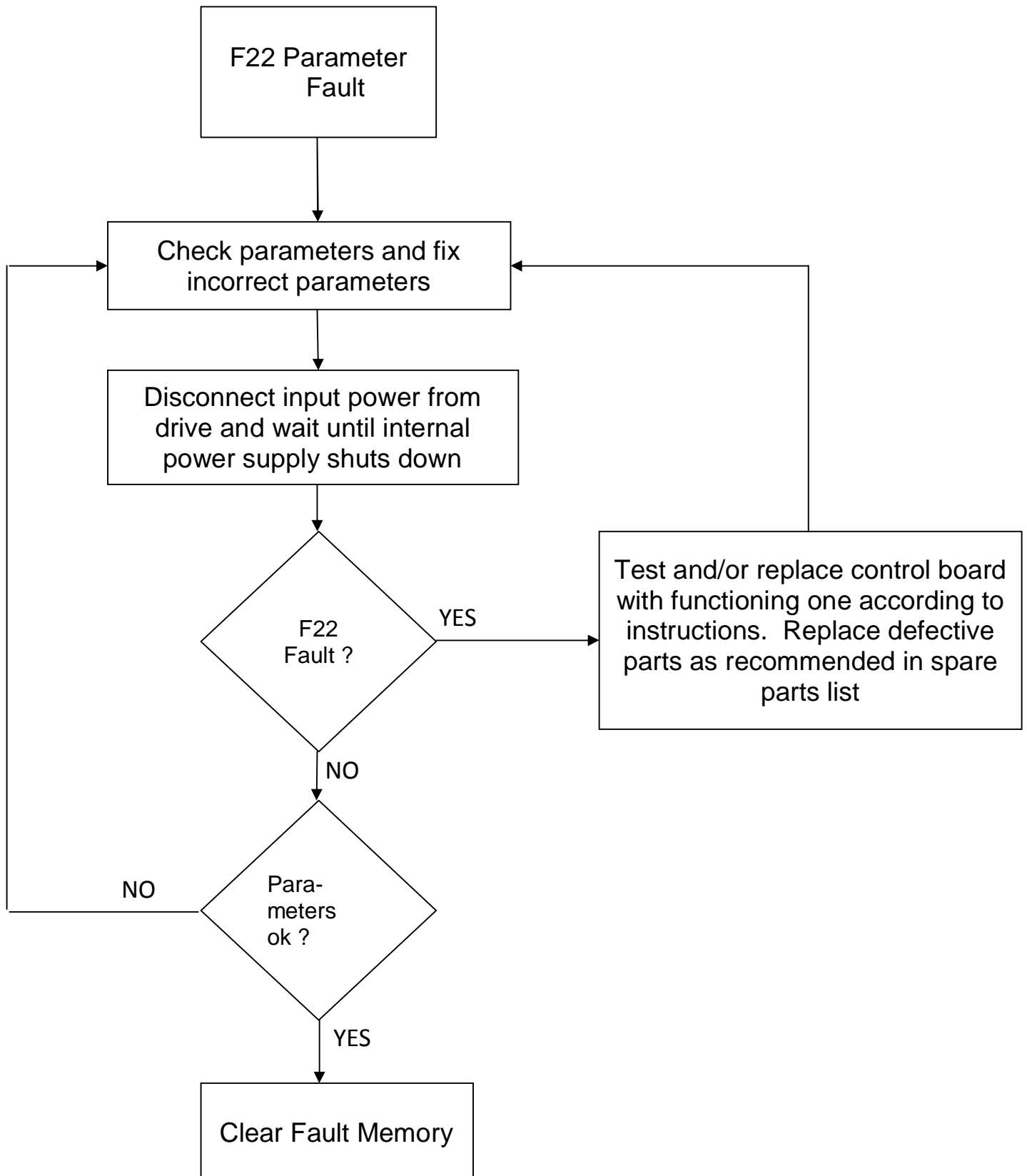
F16 – Motor Over Temperature



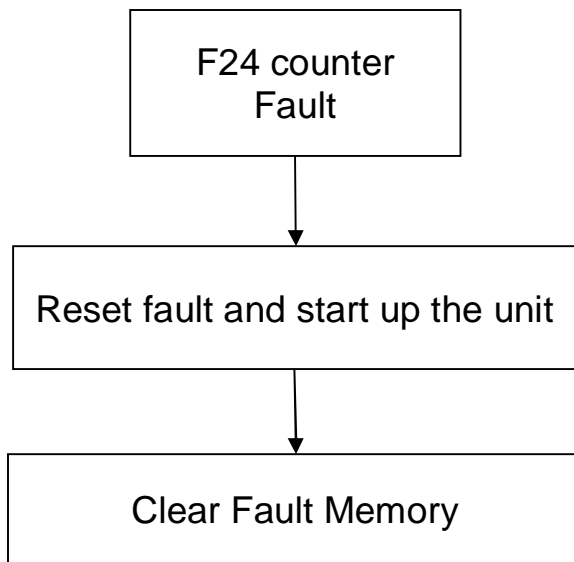
F17 – Motor under load



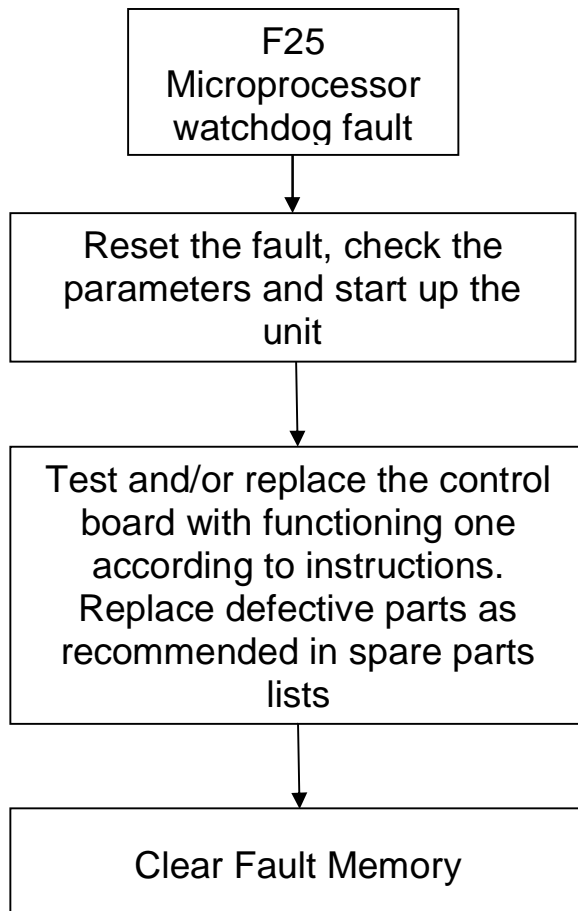
F22 – Parameter Fault



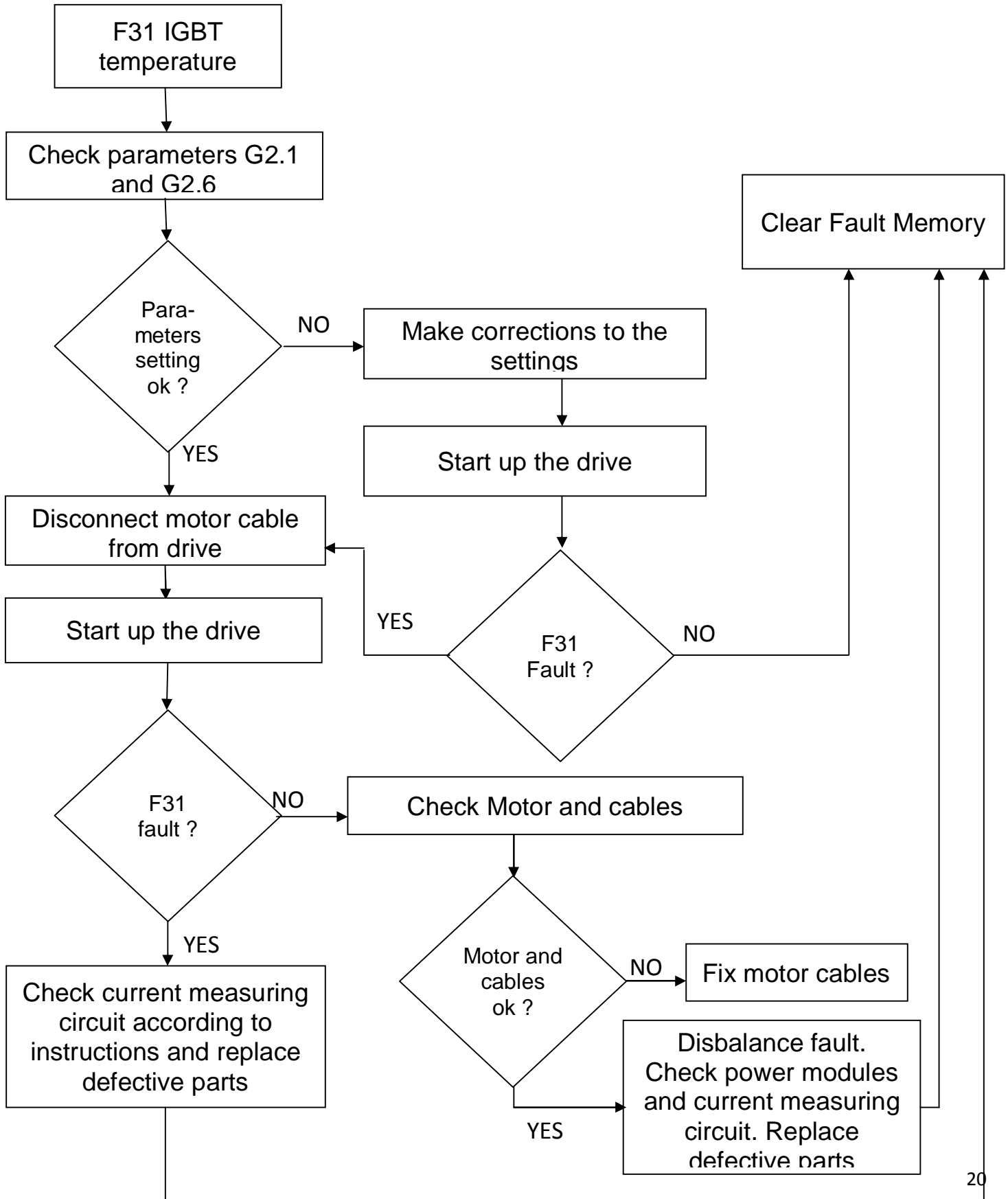
F24 – Counter Fault



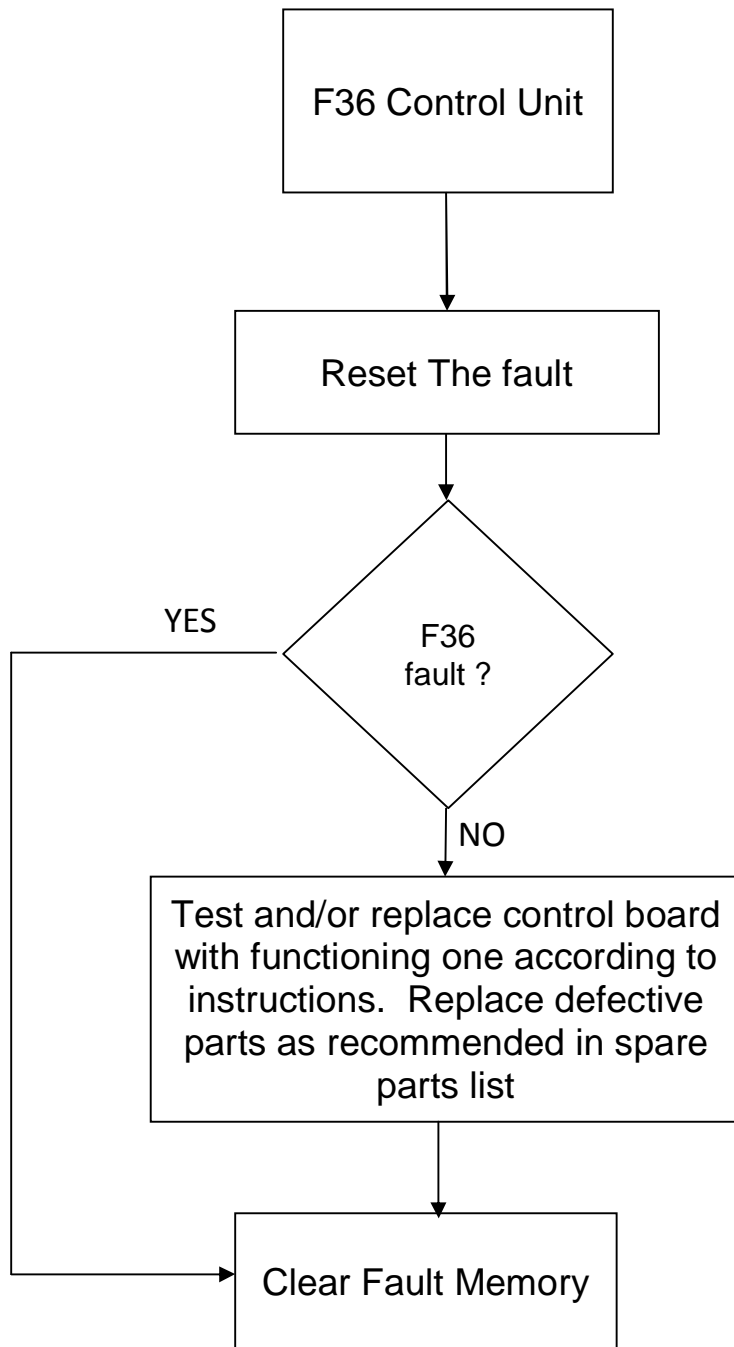
F25 – Microprocessor Watchdog Fault



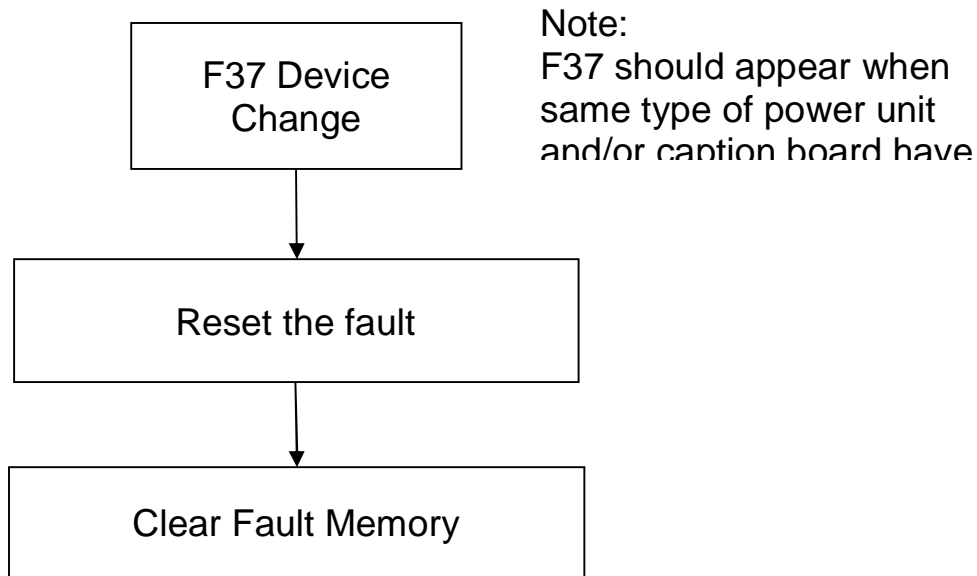
F31 – IGBT Temperature (Hardware)



F36 – Control Unit



F37 – Device Change

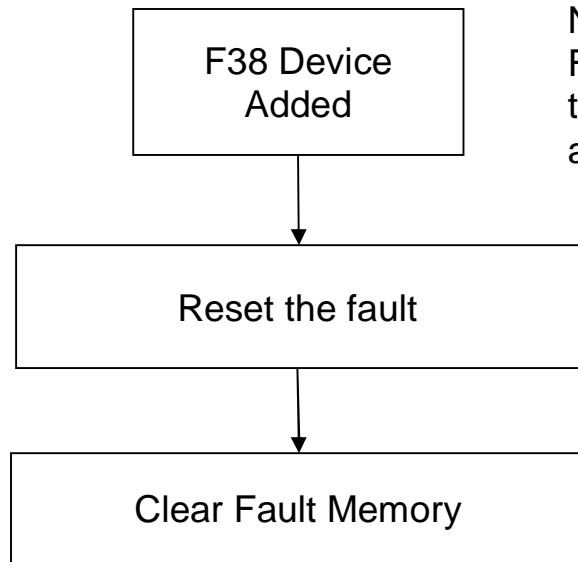


Note: Faulty board is displayed
on panel bottom line

1 = Control Card
2 = Control Unit
3 = Power Card
4 = Power Unit
5 = Adapter card

A = Slot A
B = Slot B
C = Slot C
D = Slot D
E = Slot E

F38 – Device Added



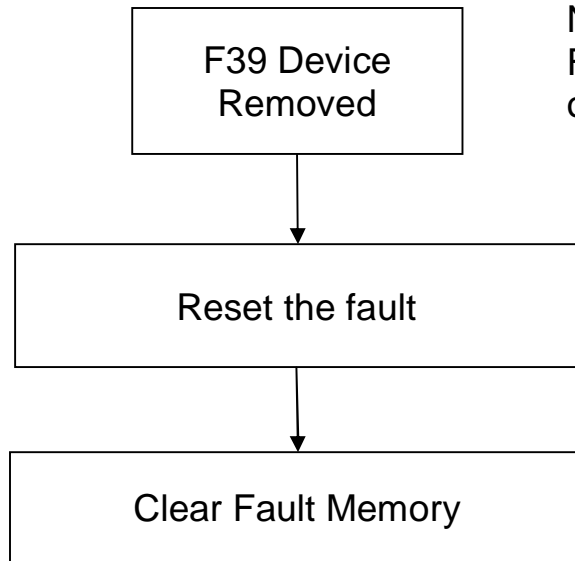
Note:
F37 should appear when same
type of option board has been
added

Note: Faulty board is displayed on panel
bottom line

1 = Control Card
2 = Control Unit
3 = Power Card
4 = Power Unit
5 = Adapter card

A = Slot A
B = Slot B
C = Slot C
D = Slot D
E = Slot E

F39 – Device Removed



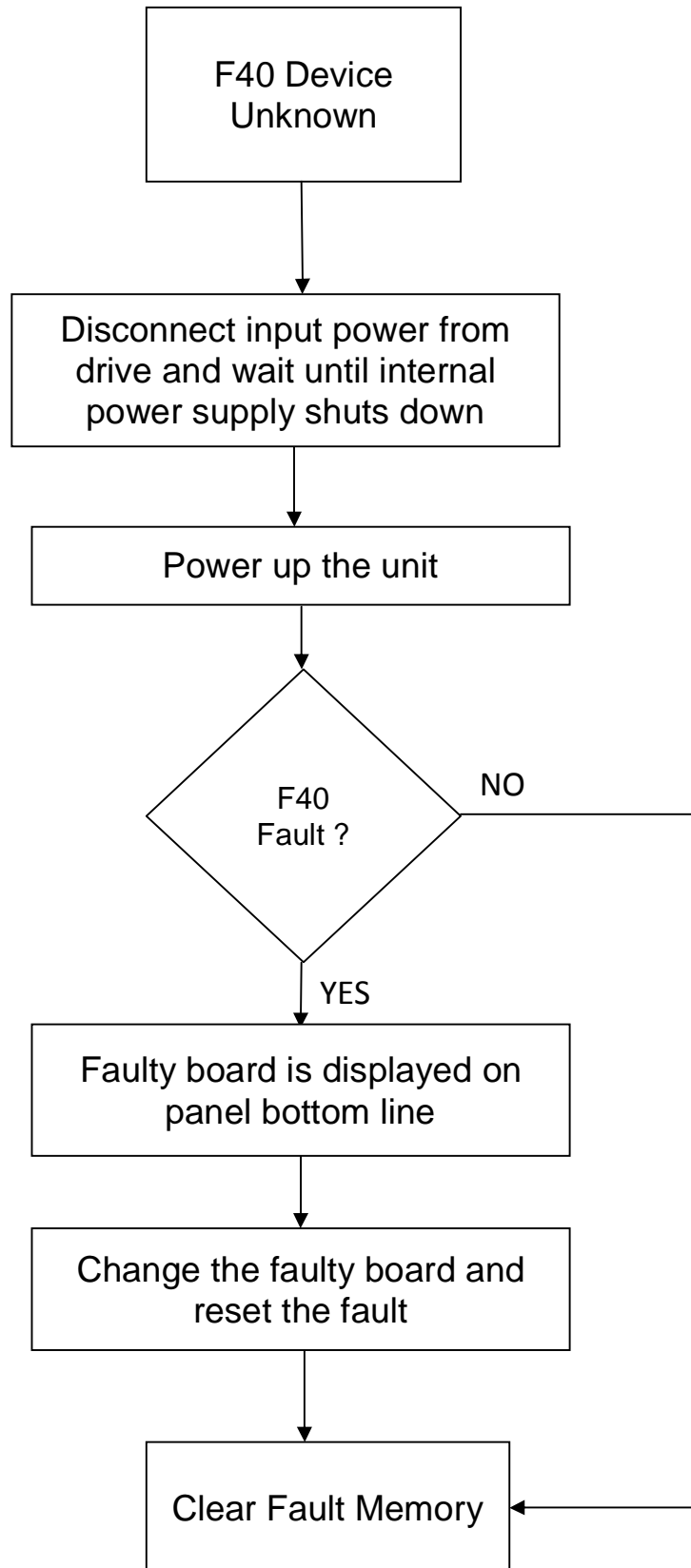
Note:
F39 should appear when an
option board has been removed

Note: Faulty board is displayed on panel
bottom line

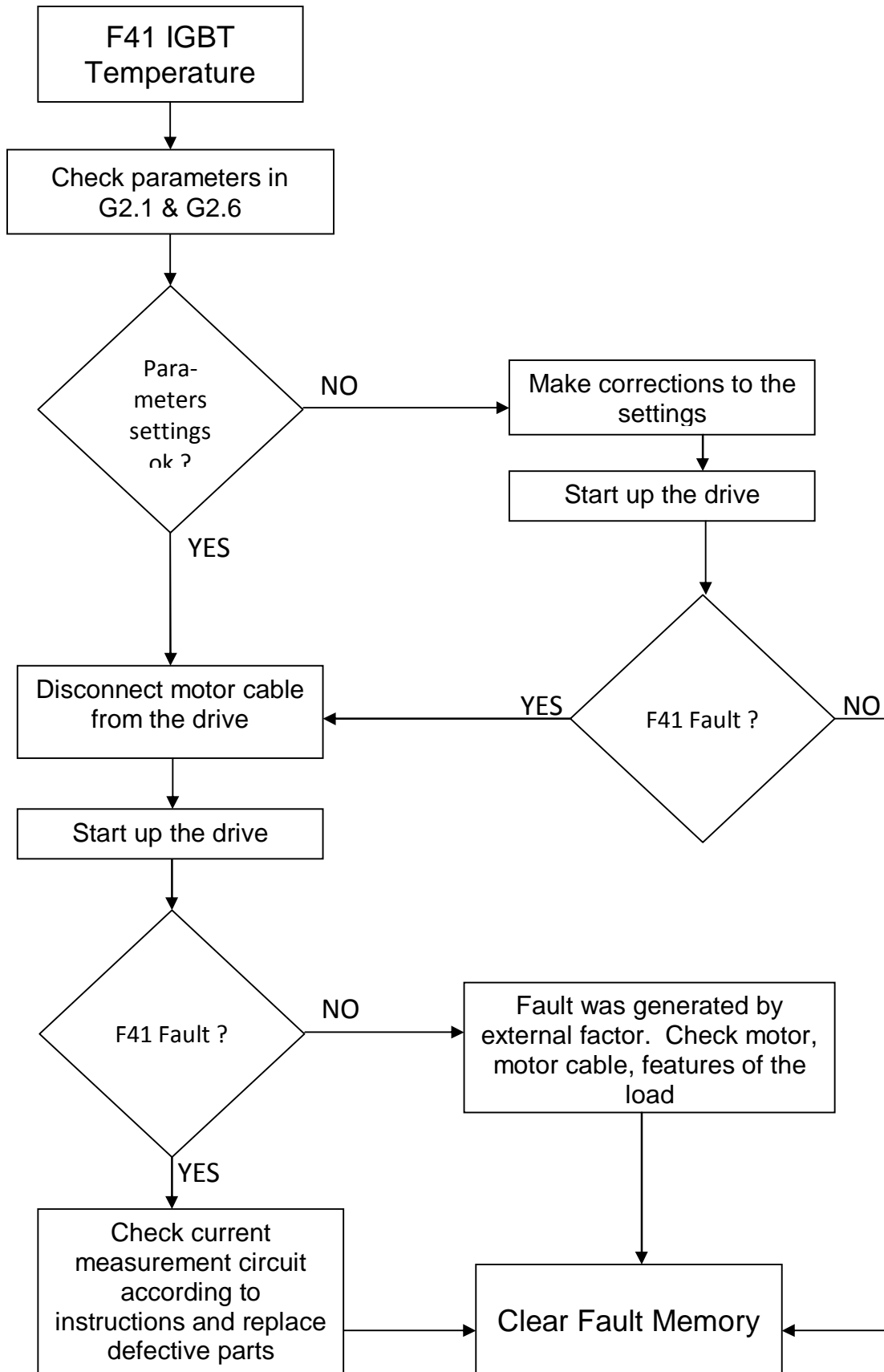
1 = Control Card
2 = Control Unit
3 = Power Card
4 = Power Unit
5 = Adapter card

A = Slot A
B = Slot B
C = Slot C
D = Slot D
E = Slot E

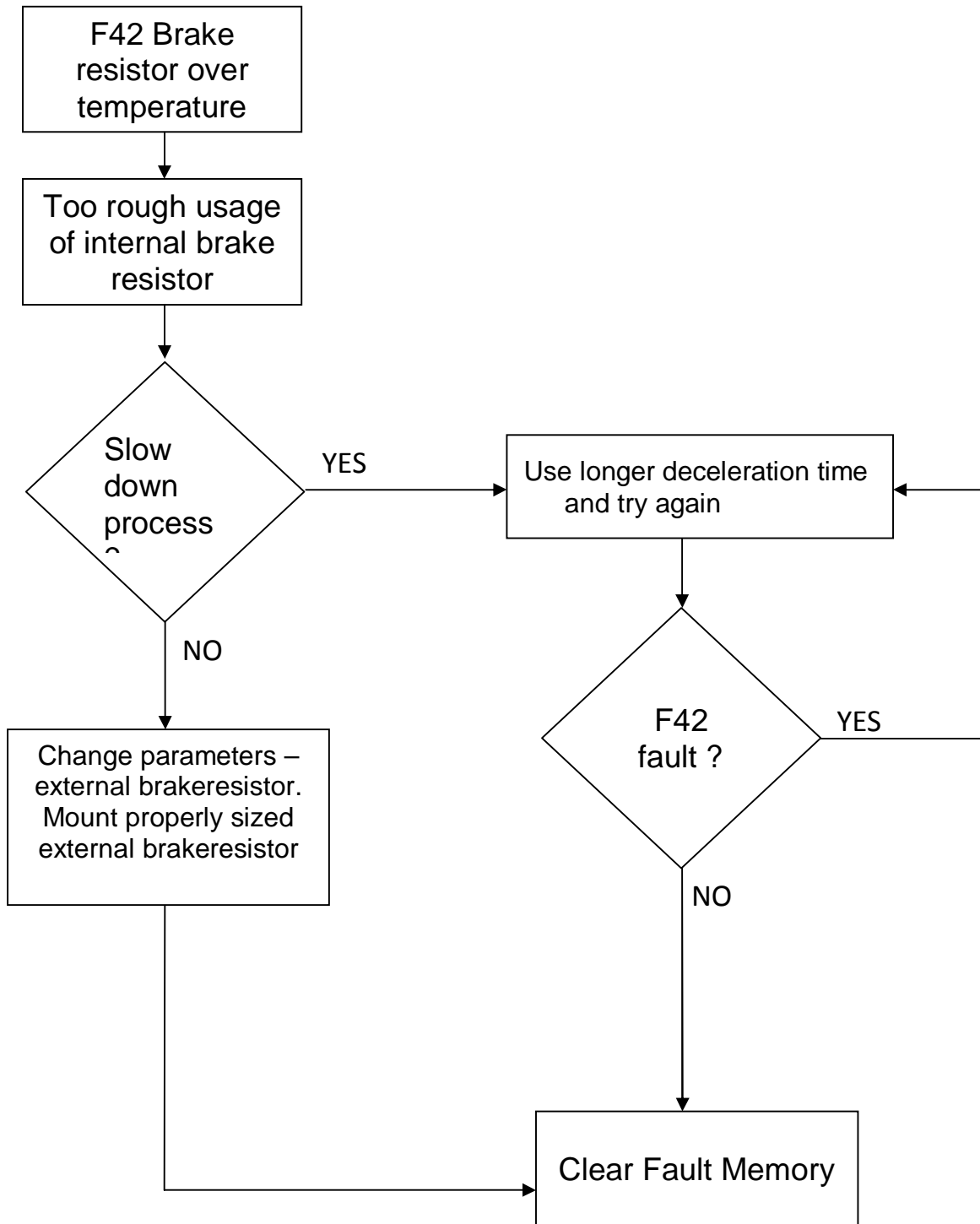
F40 – Device Unknown



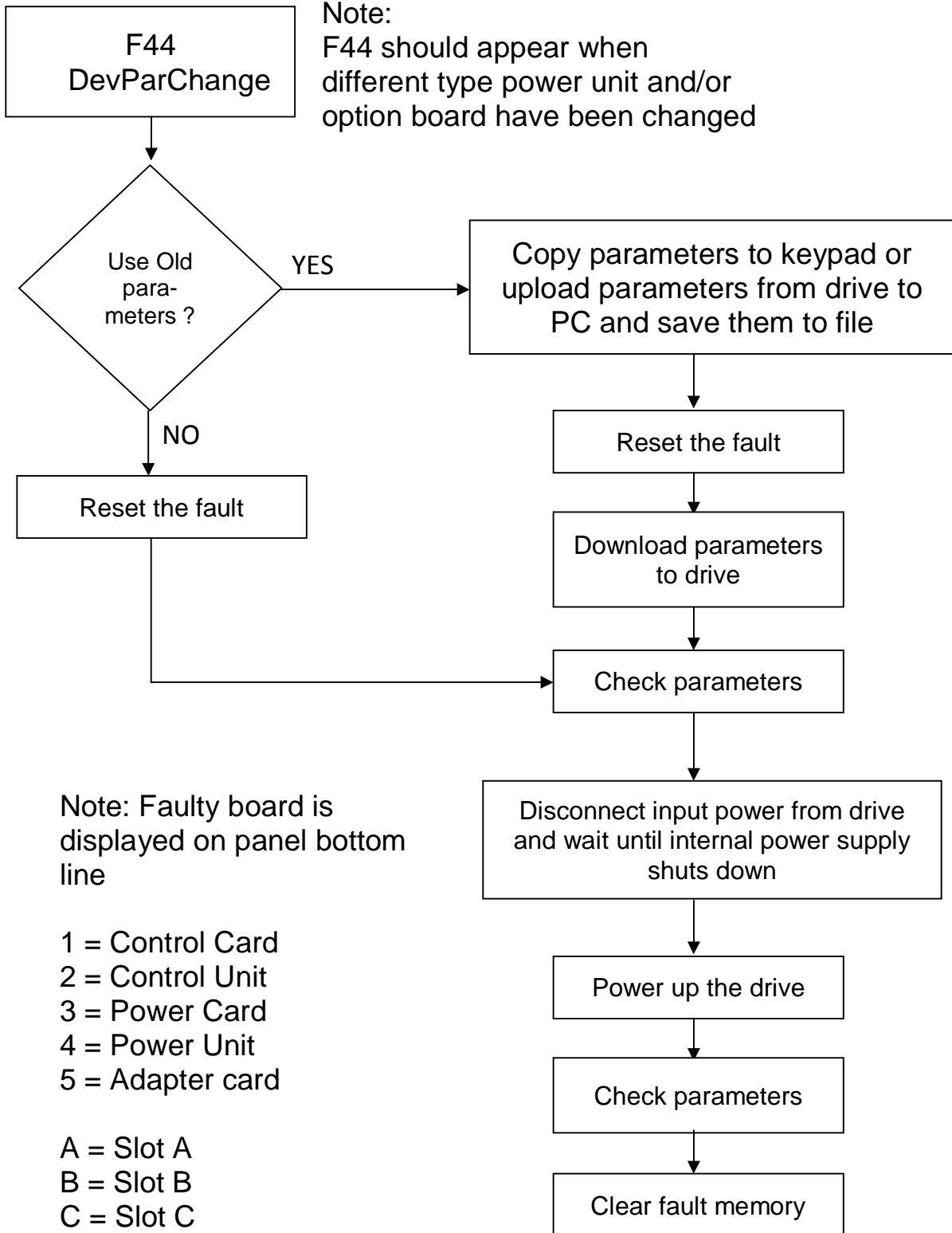
F41 – IGBT Temperature



F42 – Brake Resistor Over Temperature



F44 -- DevParChange

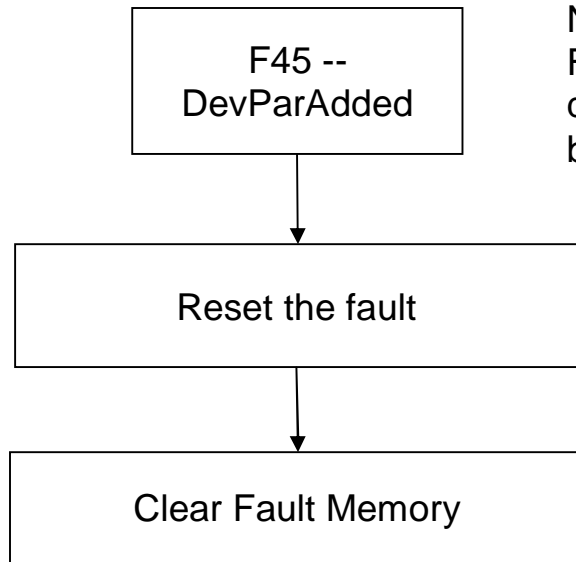


Note: Faulty board is displayed on panel bottom line

- 1 = Control Card
- 2 = Control Unit
- 3 = Power Card
- 4 = Power Unit
- 5 = Adapter card

- A = Slot A
- B = Slot B
- C = Slot C
- D = Slot D
- F = Slot F

F45 -- DevParAdded



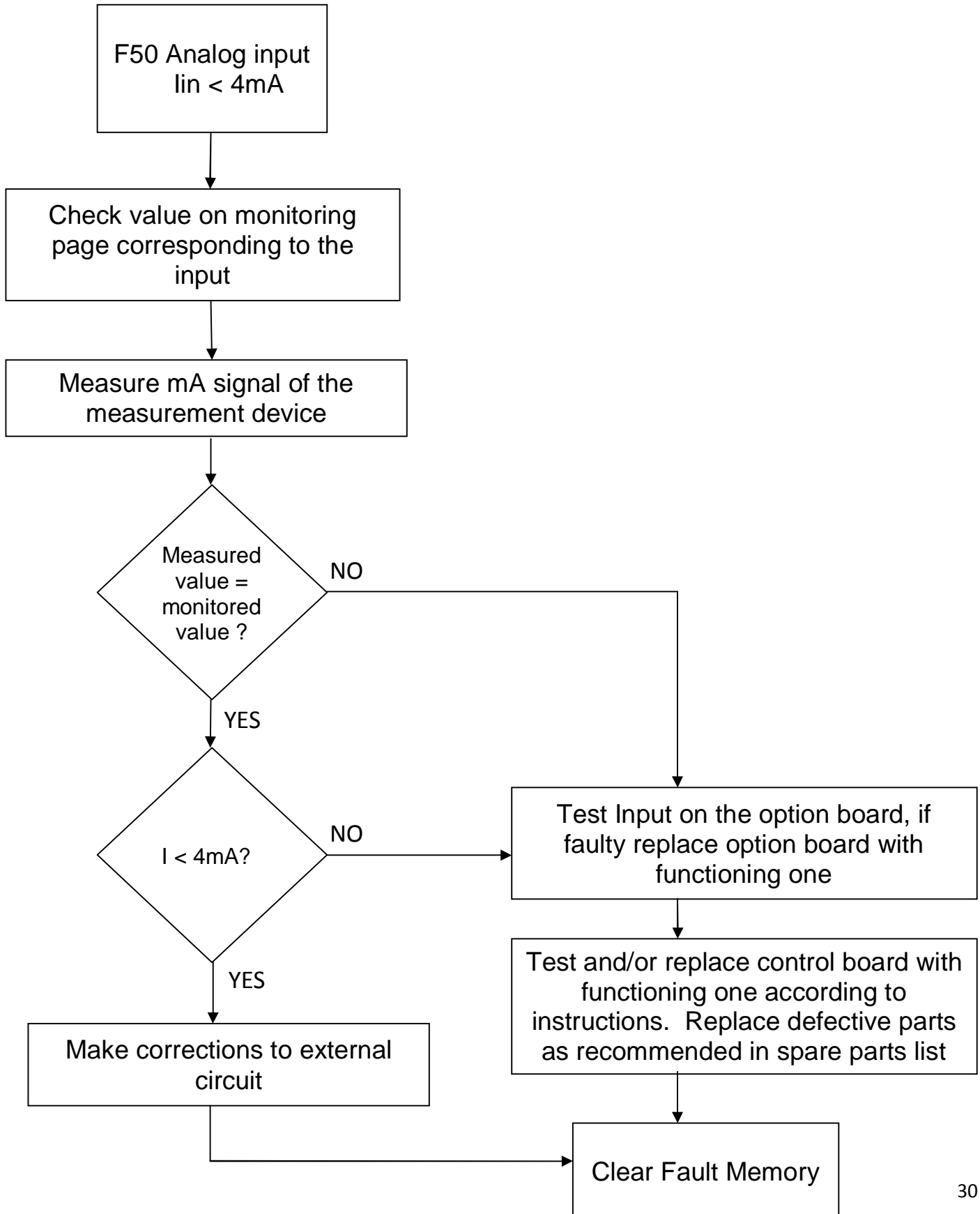
Note:
F45 dshould appear when
different type option board has
been added.

Note: Faulty board is displayed on panel
bottom line

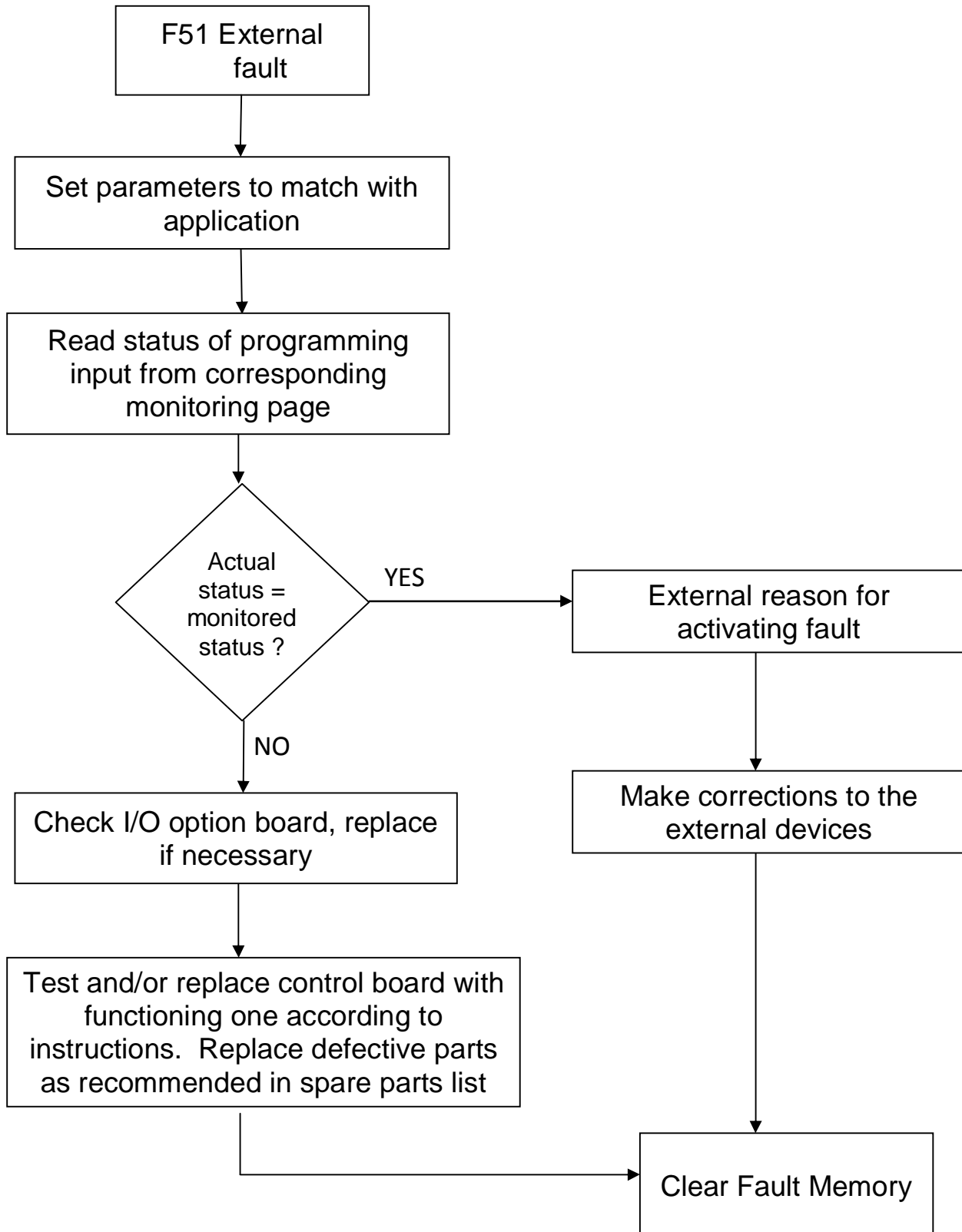
1 = Control Card
2 = Control Unit
3 = Power Card
4 = Power Unit
5 = Adapter card

A = Slot A
B = Slot B
C = Slot C
D = Slot D
E = Slot E

F50 – Analog Input $I_{in} < 4mA$



F51 – External fault



F52 – Keypad communication fault

