

# DriveExplorer™ Version 6.01 Software

Easy to Use and Low Cost

DriveExplorer software is an entry-level package providing basic functionality for programming and maintaining Allen-Bradley® drives. DriveExplorer features Windows® Explorer-style navigation to make drive set-up easy and faster than using a Human Interface Module (HIM).

DriveExplorer software is available in two different versions:

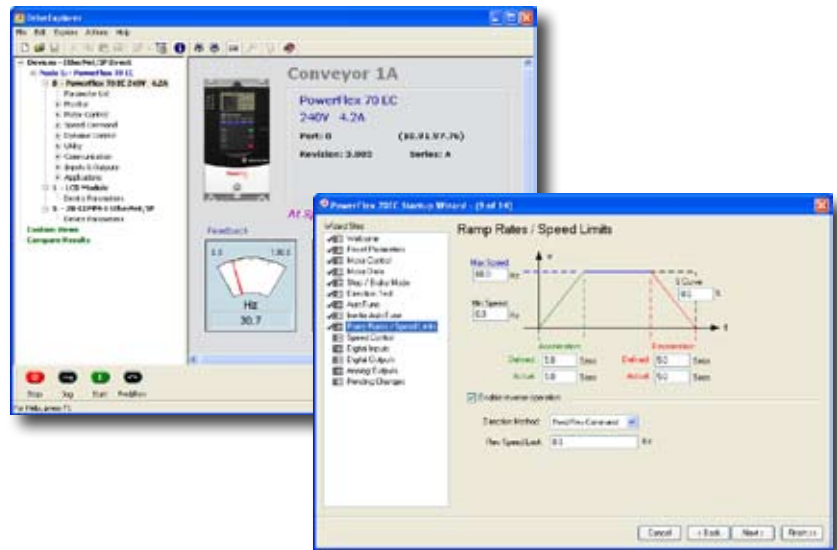
- DriveExplorer for PC full feature version (9306-4EXP02ENE)
- DriveExplorer Lite freeware that can be downloaded at:  
[www.ab.com/drives/driveexplorer](http://www.ab.com/drives/driveexplorer)  
It also comes on a CD with 1203-USB, 1203-SSS and 22-SCM-232 serial converters

## Product Highlights

- Intuitive online editor with dialog-based parameter editing
- Upload and save information from individual devices for later downloads
- Upload and download all information in a drive and its peripherals for quick commissioning replacement or to duplicate drives
- Ability to flash update device firmware
- Control Bar tools for starting and stopping drives
- Print online or use the 'Print to a Text File' feature to print offline later
- DeviceLogix programming for PowerFlex 750-Series drives
- Startup wizards simplify configuration process
- Custom views with desktop shortcuts
- Status view display shows drive status and process display items

## Communications

- EtherNet/IP™ direct connectivity
- Serial point-to-point and multi-drop
- Serial to DeviceNet™, ControlNet™, and EtherNet/IP™
- EtherNet/IP and Bluetooth™ wireless



## Supported Products

- PowerFlex®4, 4M, 40, 40P, 400 (Component Class) drives
- PowerFlex 70, 700, 700H, 700S and 750-Series (Architecture Class) drives
- SCANport™ products and peripherals
- 160 SSC™ drive with RS1 adapter
- SMC™ Flex

## Diagnostics / Troubleshooting

- Parameter comparisons to a file, device defaults, or between two files
- Access to product and communication adapter fault, alarm, and event information
- Drag-and-drop custom views allow the user to view parameters from multiple online devices simultaneously
- Access to diagnostic item information when supported by the product or communication adapter

## DriveExplorer PC System Requirements

Windows Vista, Windows 2000 (Service Pack 4 or later), and Windows XP (Service Pack 3 or later) personal computer with 800MHz processor or better with at least 512 MB of RAM and 20 GB hard drive, SVGA graphics with 800 x 600 resolution or higher, CD-ROM drive (for installation only), mouse or other pointing device, keyboard, serial communications or Ethernet connection. Internet Explorer version 6.0 (included on CD) or later must be installed on your PC.

LISTEN.  
THINK.  
SOLVE.™

## Serial Connectivity

		Point-to-Point / Multi-drop <sup>(1) (2)</sup>	Serial to DeviceNet <sup>(2)</sup>	Serial to ControlNet <sup>(2)</sup>	Serial to Ethernet/IP <sup>(2)</sup>
DSI™	PowerFlex Component Class Drives	Point-to-Point: 22-SCM-232 serial converter or 1203-USB Multi-drop: add AK-U0-RJ45-TB2P and serial cable for each node	Includes Point-to-Point hardware plus: • 22-COMM-D DeviceNet adapter in the local device	Includes Point-to-Point hardware plus: • 22-COMM-C ControlNet adapter in the local device	Includes Point-to-Point hardware plus: • 22-COMM-E EtherNet/IP adapter in the local device
160 SSC™	160 SSC™	Point-to-Point: 160-RS1 serial adapter and RS-232 serial cable Multi-drop: N/A	N/A	N/A	N/A
DPI™	PowerFlex Architecture Class Drives	Point-to-Point: 1203-SSS (Series B or higher) serial converter or 1203-USB Multi-drop: add 20-COMM-S and serial cable for each node	Includes Point-to-Point hardware plus: • 20-COMM-D DeviceNet adapter in the local device	Includes Point-to-Point hardware plus: • 20-COMM-C or 20-COMM-Q ControlNet adapter in the local device	Includes Point-to-Point hardware plus: • 20-COMM-E EtherNet/IP adapter in the local device
SCANport™	1305 AC Drive 1336 PLUS Drive 1336 PLUS II Drive 1336 IMPACT™ Drive 1336 FORCE™ Drive 1336 REGEN 1397 DC Drive 1557 MV Drive, etc.	Point-to-Point: 1203-SSS serial converter or 1203-USB Multi-drop: Use 1203-GD2, 1203-GK2, or 1336-GM2	• 1203-SFC serial cable (supplied with 1203-SSS) • 1203-GU6, 1336-GM6, 1203-GK5, or 1336-GM5 DeviceNet adapter with the local device	• 1203-SFC serial cable (supplied with 1203-SSS) • 1203-CN1 ControlNet module with the local device	• 1203-SFC serial cable (supplied with 1203-SSS) • 1203-EN1 EtherNet/IP adapter with the local device

## Enhanced Connectivity

		Direct EtherNet/IP <sup>(2)</sup>	EtherNet/IP Wireless <sup>(2)</sup>	Bluetooth Wireless <sup>(2)</sup>
DSI™	PowerFlex Component Class Drives	• 22-COMM-E EtherNet/IP adapter in the drive	• 3rd party Ethernet wireless card in the PC • 3rd party Ethernet wireless access point • 22-COMM-E EtherNet/IP adapter in the drive	• 3rd party serial to Bluetooth wireless adapter with the PC • 22-WIM-N1 Nema 1 or 22-WIM-N4S Nema 4 Wireless Interface Module Note: Supports routing over DeviceNet, ControlNet, EtherNet/IP or Modbus RTU (DSI)
DPI™	PowerFlex Architecture Class Drives	• 20-COMM-E EtherNet/IP adapter in the drive	• 3rd party Ethernet wireless card in the PC • 3rd party Ethernet wireless access point • 22-COMM-E EtherNet/IP adapter in the drive	• 3rd party serial to Bluetooth wireless adapter with the PC • 20-WIM-N1 Nema 1 or 20-WIM-N4S Nema 4 Wireless Interface Module, or PowerFlex 70 Nema 4/12 drive with WIM cover option Note: Supports routing over DeviceNet, ControlNet, EtherNet/IP or DF1
SCANport™	1305 AC Drive 1336 PLUS Drive 1336 PLUS II Drive 1336 IMPACT™ Drive 1336 FORCE™ Drive 1336 REGEN 1397 DC Drive 1557 MV Drive, etc.	• 1203-EN1 EtherNet/IP module with the drive	• 3rd party Ethernet wireless card in the PC • 3rd party Ethernet wireless access point • 1203-EN1 EtherNet/IP module with the drive	• 3rd party serial to Bluetooth wireless adapter with the PC • 20-WIM-N1 Nema 1 Wireless Interface Module (typically used with 20-HIM-B1 Nema 1 Bezel Kit), or 20-WIM-N4S Nema 4 Wireless Interface Module • Note: Only the drive connected to the 20-WIM can be accessed. Routing over networks is not possible

<sup>(1)</sup> Available in Lite firmware version

<sup>(2)</sup> Available in Full version

DriveExplorer, SCANport, DPI, DSI, PowerFlex, 1336 IMPACT, 1336 FORCE, SSC, SMP, and SMC are trademarks of Rockwell Automation.

ControlNet is a trademark of ControlNet International, Ltd.

DeviceNet is a trademark of ODVA.

EtherNet/IP is a trademark under license by ODVA.

Windows and Microsoft are registered trademarks of Microsoft Corporation.

[www.rockwellautomation.com](http://www.rockwellautomation.com)

### Power, Control and Information Solutions Headquarters

Americas: Rockwell Automation, 1201 South Second Street, Milwaukee, WI 53204 USA, Tel: (1) 414.382.2000, Fax: (1) 414.382.4444

Europe/Middle East/Africa: Rockwell Automation, Vorstlaan/Boulevard du Souverain 36, 1170 Brussels, Belgium, Tel: (32) 2 663 0600, Fax: (32) 2 663 0640

Asia Pacific: Rockwell Automation, Level 14, Core F, Cyberport 3, 100 Cyberport Road, Hong Kong, Tel: (852) 2887 4788, Fax: (852) 2508 1846