

**HERMETIC SCREW LIQUID
CHILLER W/HOWDEN COMPR.
(R-134A)**

23XL

SIZE: 001,002 & 004

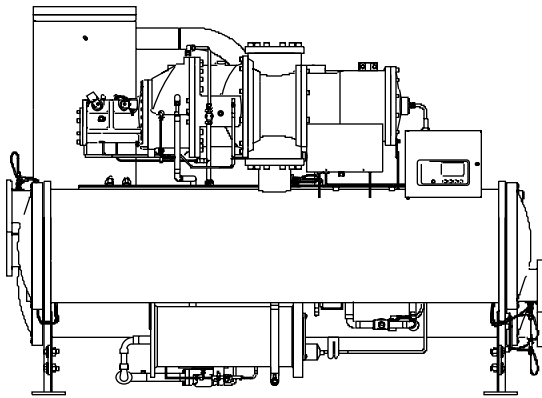
SERIES: HOWDEN

THIS SERVICE PARTS GUIDE IS COMPRESSOR SIZE DRIVEN.

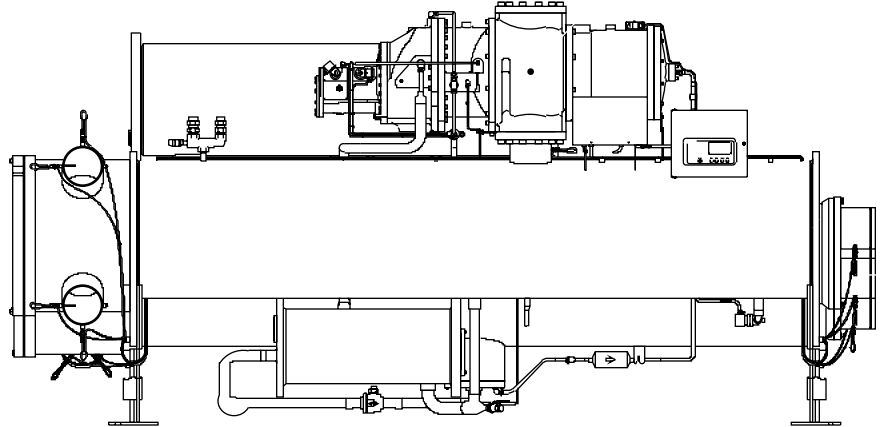
"C4" OR "C6" SIZE COMPRESSOR WITH FRAME #1 OR 2 COOLER & CONDENSER

"D4" OR "D6" SIZE COMPRESSOR WITH FRAME #3 OR 4 COOLER & CONDENSER

TO DETERMINE YOUR COMPRESSOR, COOLER, AND CONDENSER FRAME SIZE REFER TO SIGNIFICANCE CHART ON PAGE#2



23XL FRAME 1 OR 2



23XL FRAME 4

HOW TO USE THIS CATALOG

1. THIS CATALOG PRESENTS THE MOST COMMONLY USED SPECIFIED PARTS FOR THE STANDARD **23XL HERMETIC SCREW MACHINE** AND IS NOT APPLICABLE TO ANY SPECIAL ORDER MACHINES. (CONTACT CARRIER WITH MACHINE SERIAL NUMBER FOR ANY SPECIAL ORDER UNIT PARTS.)
 2. OCCASIONALLY, DUE TO LIMITATIONS OF ILLUSTRATIONS USED, A PART MAY NOT BE ILLUSTRATED. THESE PARTS ARE IDENTIFIED BY "N" IN THE COLUMN NEXT TO THE ITEM NUMBER.
 3. THE FOLLOWING PARTS ARE **NOT** LISTED IN THIS CATALOG:
 - A) STARTERS
 - B) EVAP. TUBE PART NUMBERS
 - C) COND. TUBE PART NUMBERS
- IF ANY OF THESE PARTS ARE REQUIRED, CONTACT YOUR CARRIER REPRESENTATIVE WITH THE MODEL NUMBER AND SERIAL NUMBER OF YOUR MACHINE.
4. POSITIVE IDENTIFICATION OF YOUR MACHINE TO PROPERLY SELECT PARTS MAY BE DONE BY REFERRING TO THE MACHINE NAME PLATE. SEE SIGNIFICANCE CHART, PG. 2.

Graphics Catalog

Catalog No: RCD-3523-005 (7/00)

Rev.

Supersedes: NEW

Rev.

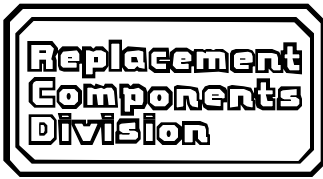
Note: See "Catalog Notes" on last page for explanation of symbolism.

Graphics Page: 1

Litho in U.S.A



Electronic Graphics 23005001



HERMETIC SCREW LIQUID CHILLER W/HOWDEN COMPR. (R-134A)

23XL

SIZE: 001,002 & 004

SERIES: HOWDEN

MACHINE MODEL NUMBER SIGNIFICANCE

DIGIT	1	2	3	4	5	6	7	8	9	10	11	12
MODEL NO.	2	3	X	L	2	0	2	1	E	C	6	0

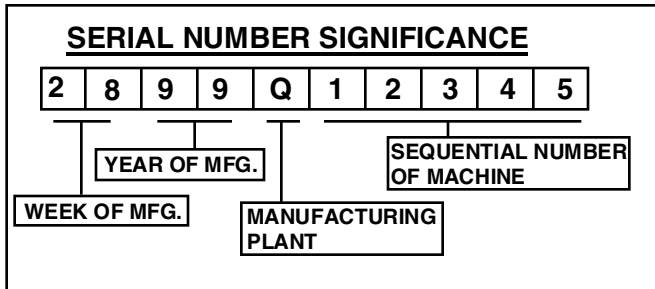


COOLER CODE
10 & 11, FRAME 1
20 & 21, FRAME 2
30 - 33, FRAME 4
40 - 43, FRAME 4
45 - 48, FRAME 4

CONDENSER CODE
10 & 11, FRAME 1
20 & 21, FRAME 2
30 - 33, FRAME 4
40 - 43, FRAME 4
45 - 48, FRAME 4

COMPRESSOR CODE (60HZ)

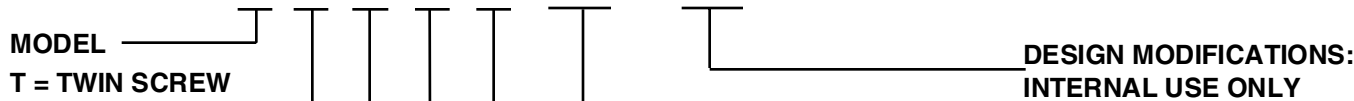
C4 - 185 TONS (650 KW)	D4 - 275 TONS (968 KW)
W/ ECON. C4 - 200 TONS (700 KW)	W/ ECON. D4 - 300 TONS (1056 KW)
C6 - 230 TONS (810 KW)	D6 - 325 TONS (1144 KW)
W/ECON. C6 - 250 TONS (880 KW)	W/ECON. D6 - 350 TONS (1232 KW)



ECONOMIZER CODE
E - ECONOMIZER
N - NO ECONOMIZER

COMPRESSOR MODEL NUMBER SIGNIFICANCE

DIGIT	1	2	3	4	5	6	7	8	9
MODEL NO.	T	C	4	B	H	0	0	A	H



MODEL
T = TWIN SCREW

TYPE
C = 200 TON
D = 300 TON
CAPACITY (TONS)

C TYPE COMPR.	4	200 TON
	6	250 TON
D TYPE COMPR.	4	300 TON
	6	350 TON

DESIGN VARIABLE
00 - FIXED V I
60 - FIXED V I (SERVICE MODEL)

ELECTRICAL

H	400 / 460 - 3 - 50 / 60
J	575 - 3 - 60
L	230 - 3 - 50
T	346/ 380 / 415-3-50/ 60
V	200 - 208-3-60
W	220 - 240 - 3 - 60

POLARITY B = TWO POLE

Graphics Catalog

Catalog No: RCD-3523-005 (7/00)

Rev.

Supersedes: NEW

Rev.

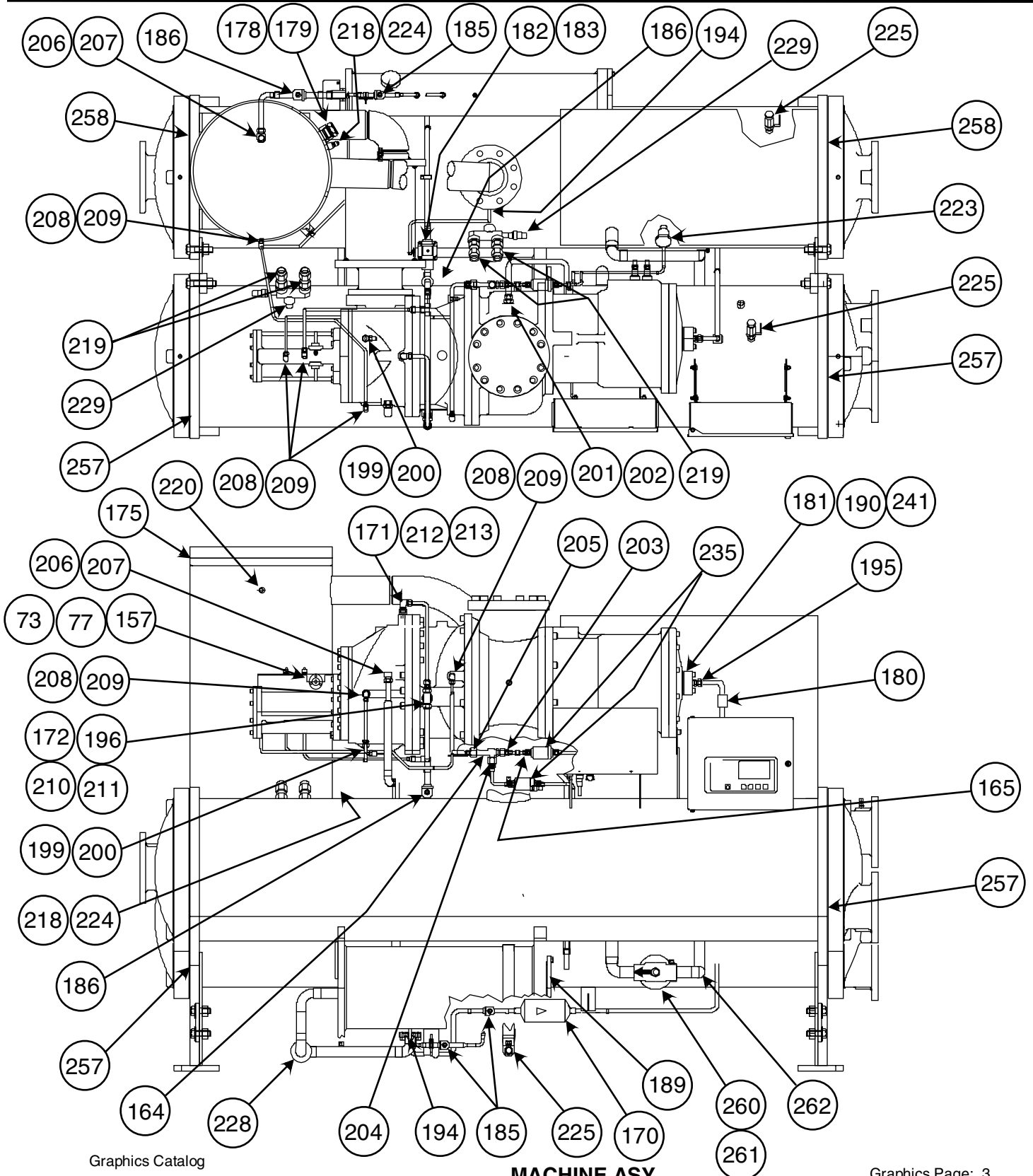
Note: See "Catalog Notes" on last page for explanation of symbolism.

Graphics Page: 2

Litho in U.S.A



Electronic Graphics 23005002



**MACHINE ASY
FRAME 1 & 2**

Graphics Catalog
Catalog No: RCD-3523-005 (7/00)

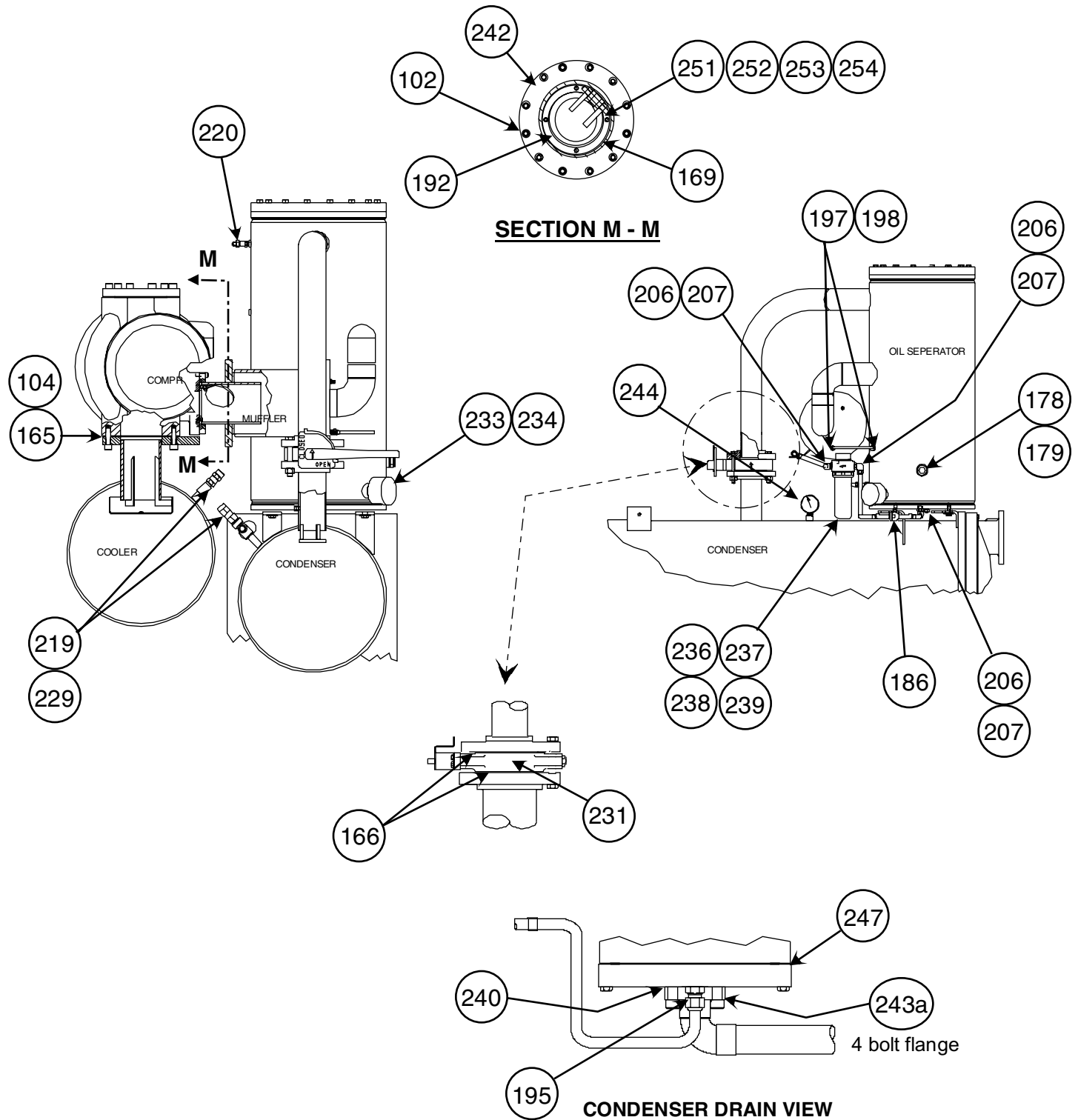
Rev.
Rev.

Supersedes: NEW

Note: See "Catalog Notes" on last page for explanation of symbolism.

Graphics Page: 3
Litho in U.S.A





FRAME 1 & 2 MACHINES

Graphics Catalog

Catalog No: RCD-3523-005 (7/00)

Rev.

Supersedes: NEW

Rev.

Note: See "Catalog Notes" on last page for explanation of symbolism.

Graphics Page: 4

Litho in U.S.A.



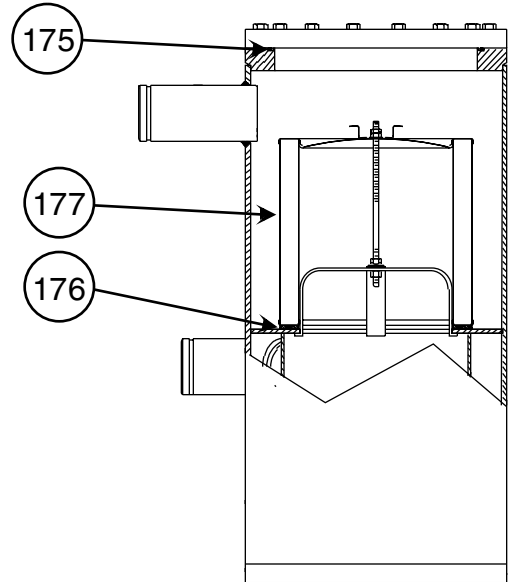
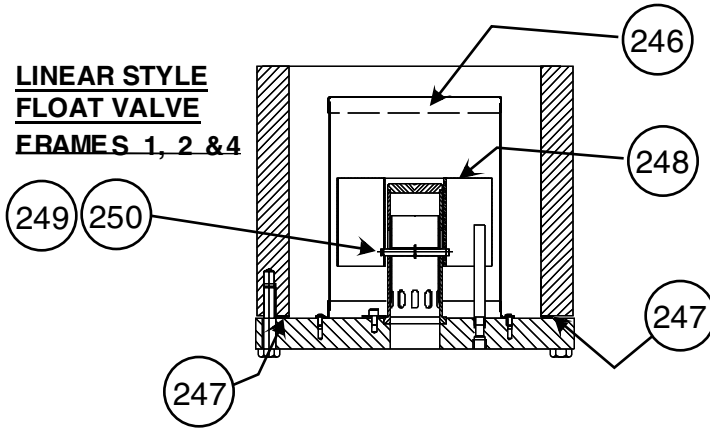
**HERMETIC SCREW LIQUID
CHILLER W/HOWDEN COMPR.
(R-134A)**

23XL

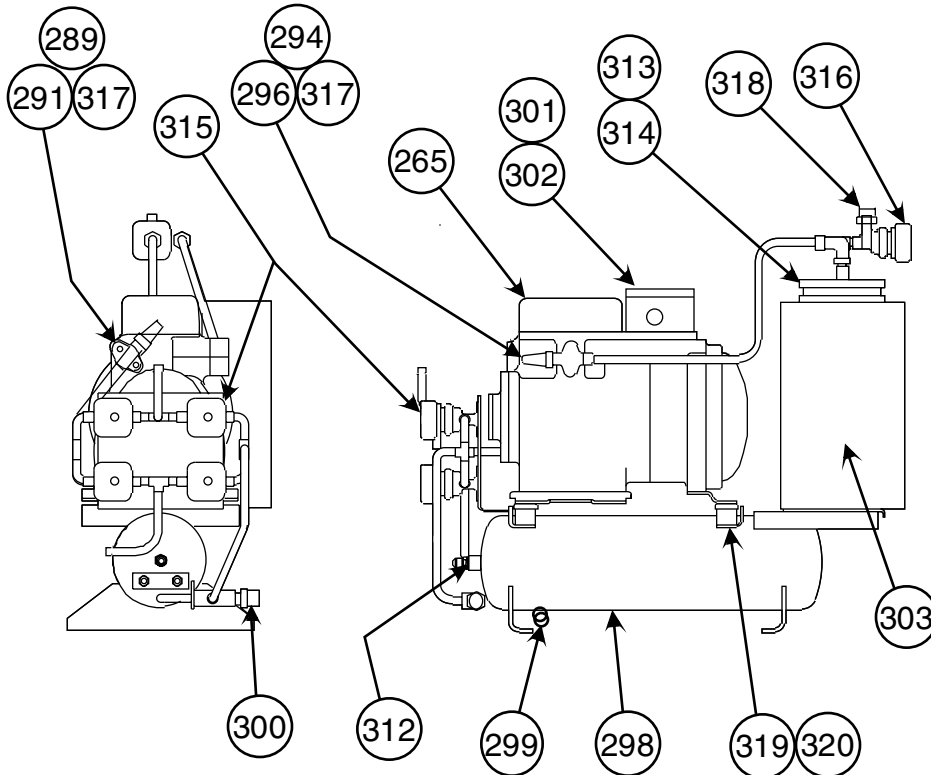
SIZE: 001,002 & 004

SERIES: HOWDEN

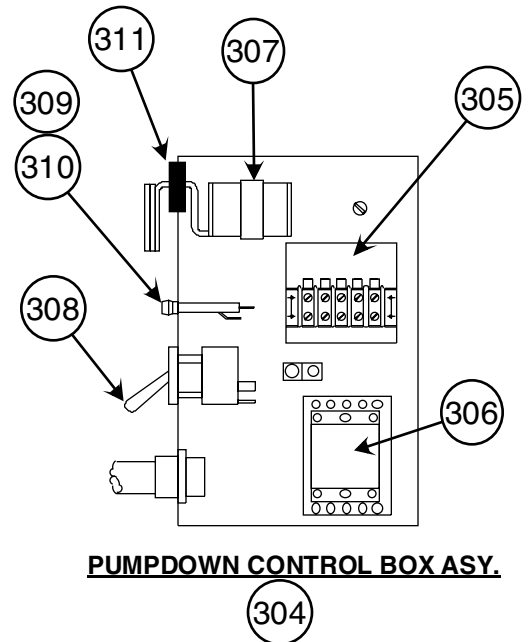
**LINEAR STYLE
FLOAT VALVE
FRAMES 1, 2 & 4**



**OIL SEPERATOR
(FRAME 1 & 2 DESIGN)**

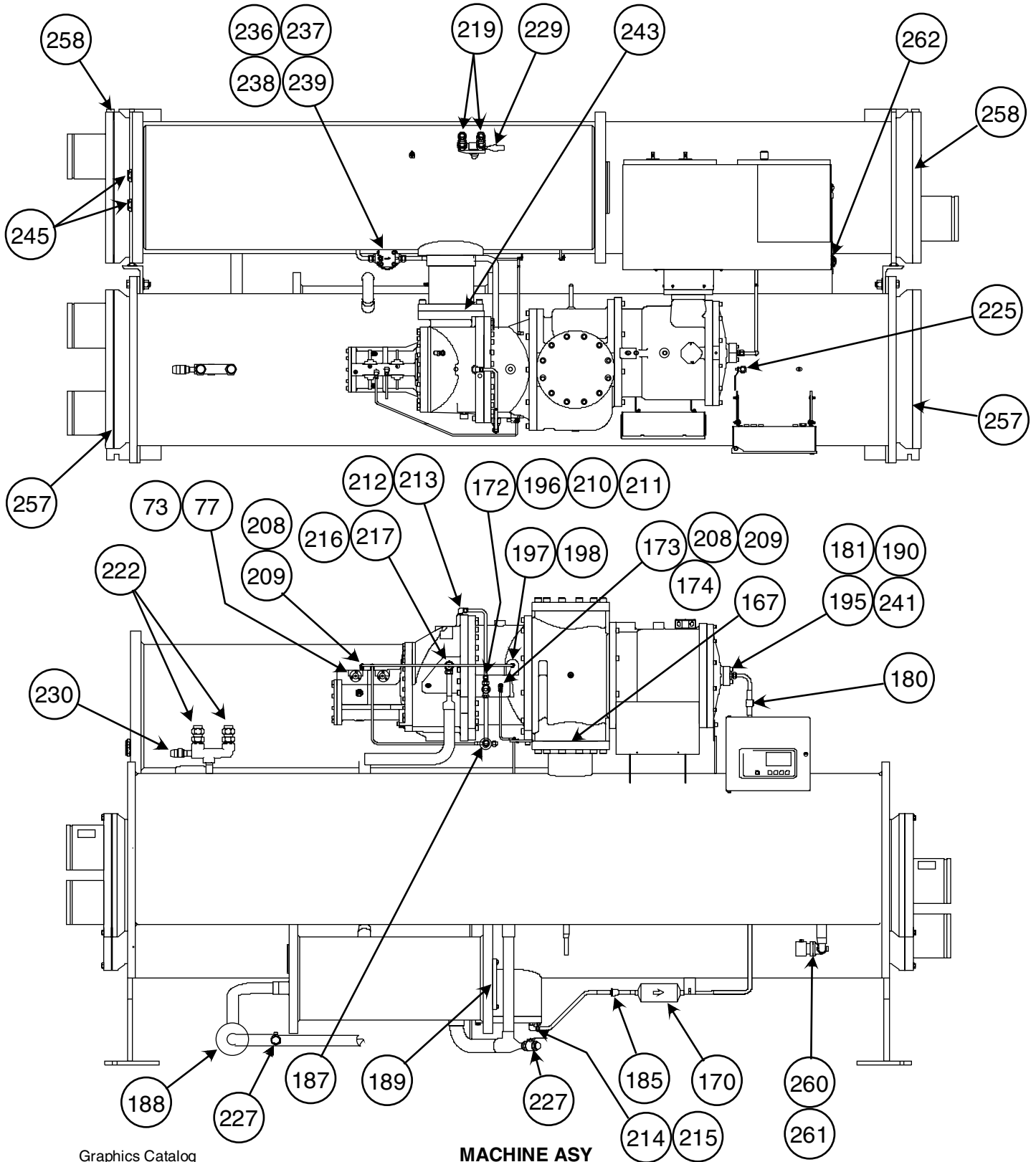


**PUMPDOWN ASY.
USED WITH ALL MACHINES** (264)



PUMPDOWN CONTROL BOX ASY.



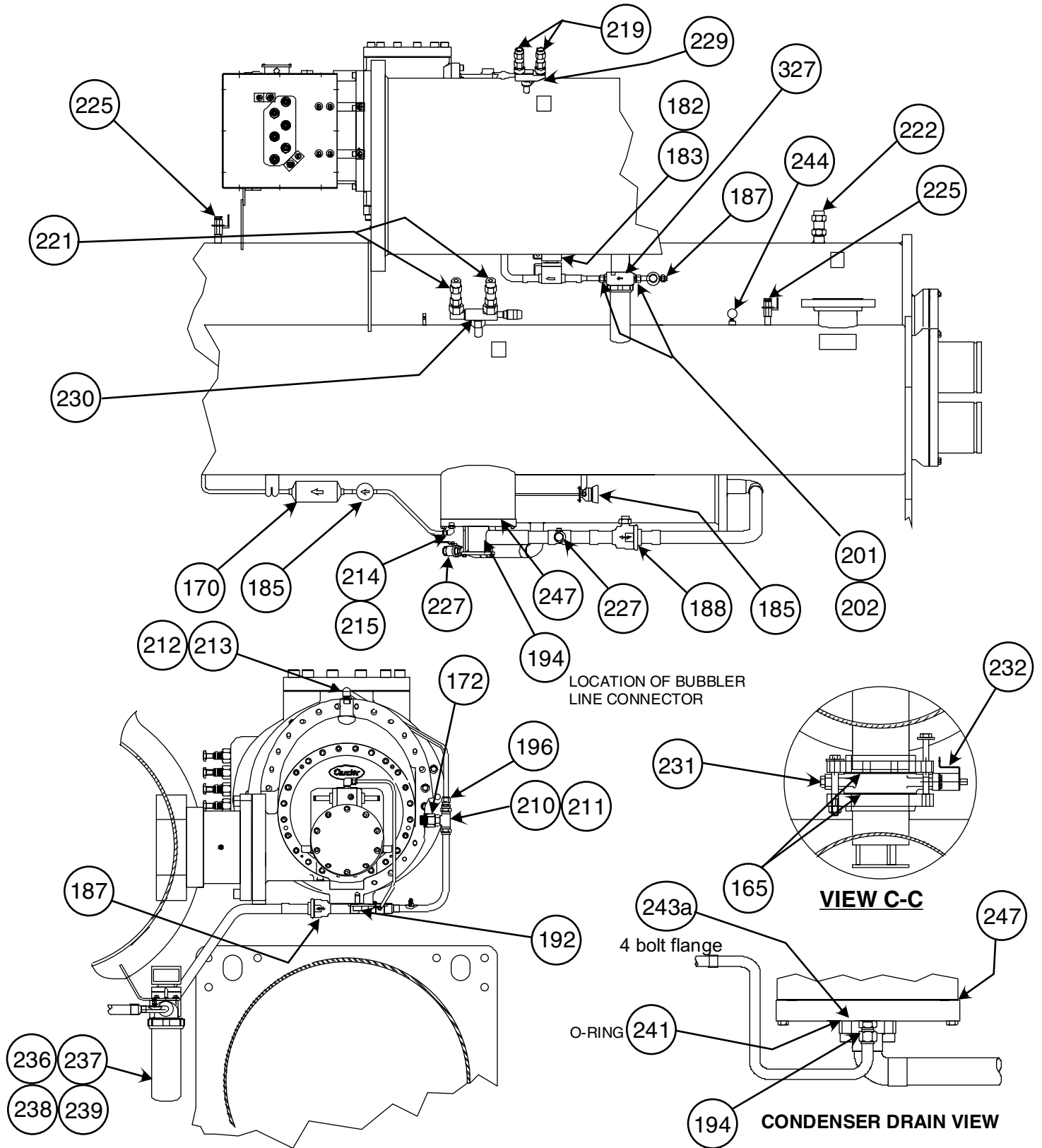


**MACHINE ASY
FRAME 4**

Graphics Catalog
Catalog No: RCD-3523-005 (7/00) Rev.
Supersedes: NEW Rev.
Note: See "Catalog Notes" on last page for explanation of symbolism.

Graphics Page: 6
Litho in U.S.A

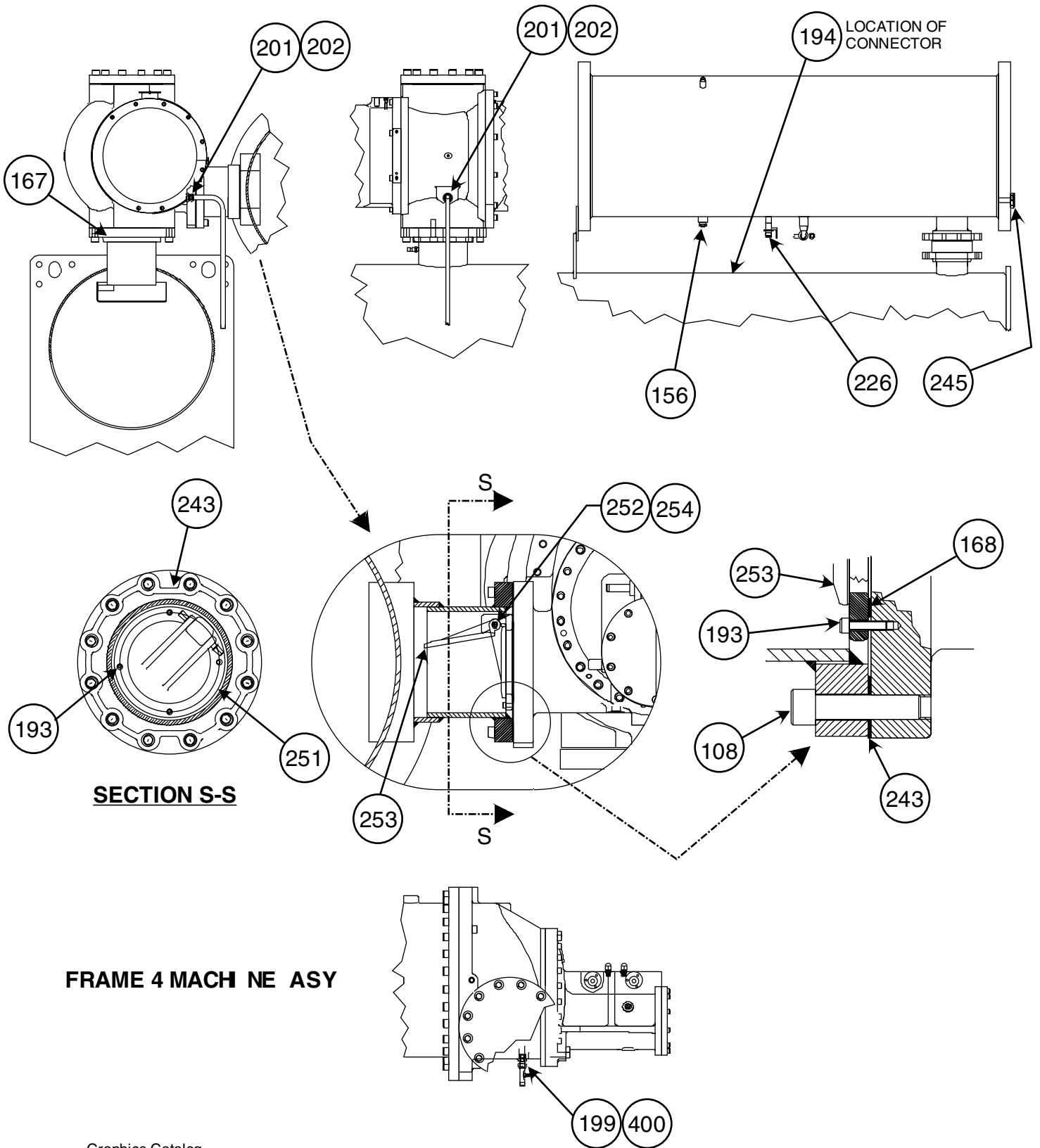




FRAME 4 MACHINE

Graphics Catalog
 Catalog No: RCD-3523-005 (7/00) Rev.
 Supersedes: NEW Rev.
 Note: See "Catalog Notes" on last page for explanation of symbolism.

Graphics Page: 7
 Litho in U.S.A



SECTION S-S

FRAME 4 MACHINE ASY

Graphics Catalog

Catalog No: RCD-3523-005 (7/00)

Rev.

Supersedes: NEW

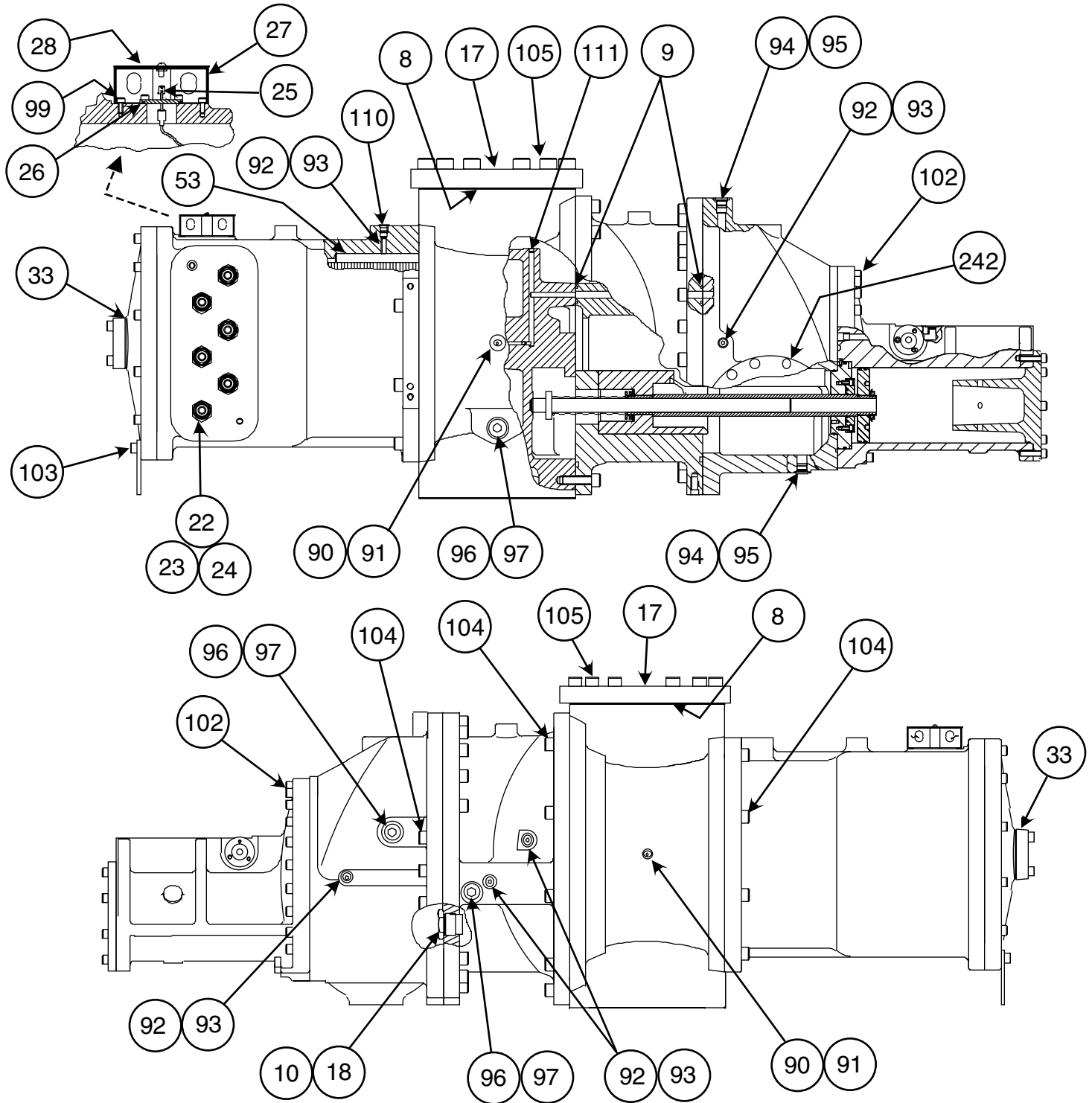
Rev.

Note: See "Catalog Notes" on last page for explanation of symbolism.

Graphics Page: 8

Litho in U.S.A





COMPRESSOR "C" TYPE

Graphics Catalog

Catalog No: RCD-3523-005 (7/00)

Rev.

Supersedes: NEW

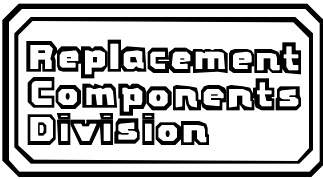
Rev.

Note: See "Catalog Notes" on last page for explanation of symbolism.

Graphics Page: 9

Litho in U.S.A



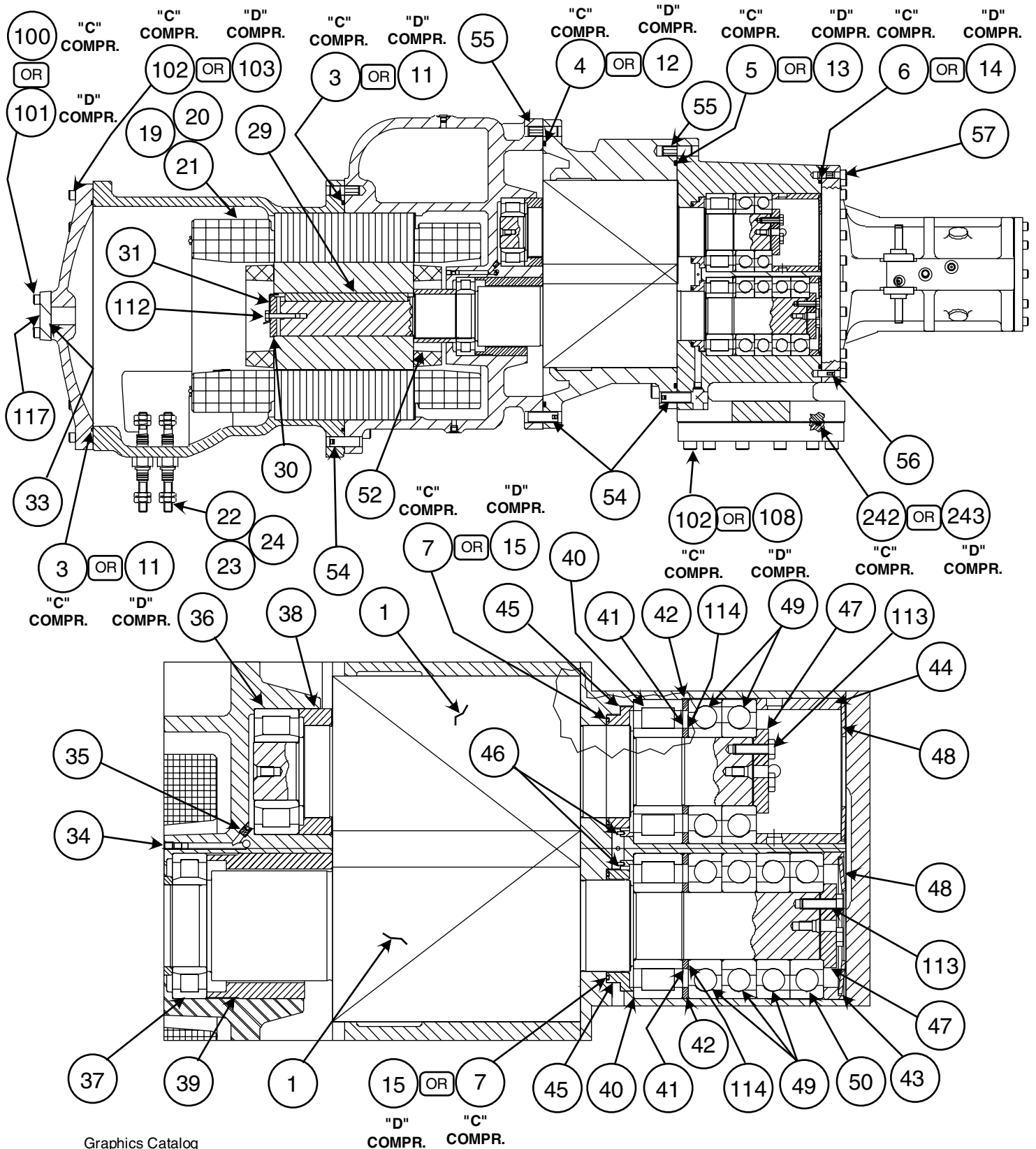


HERMETIC SCREW LIQUID CHILLER W/HOWDEN COMPR. (R-134A)

23XL

SIZE: 001,002 & 004

SERIES: HOWDEN



Graphics Catalog
Catalog No: RCD-3523-005 (7/00)
Supersedes: NEW

Rev.
Rev.

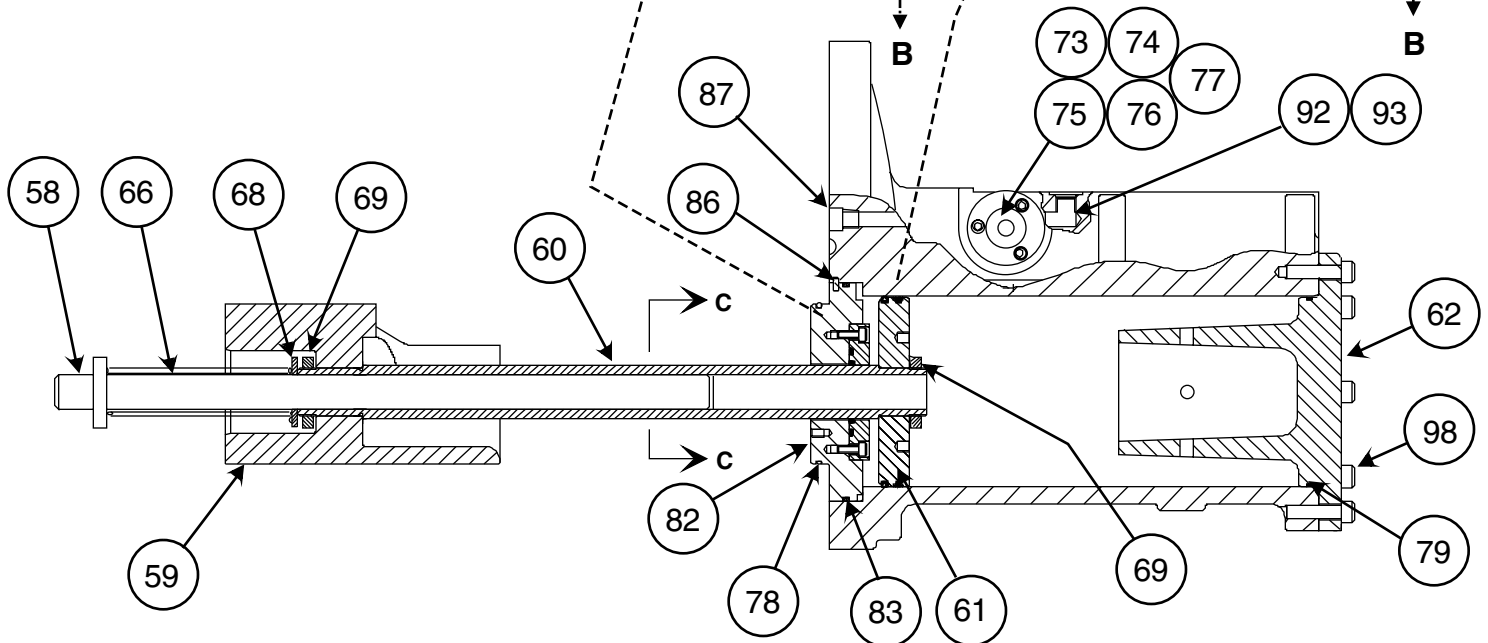
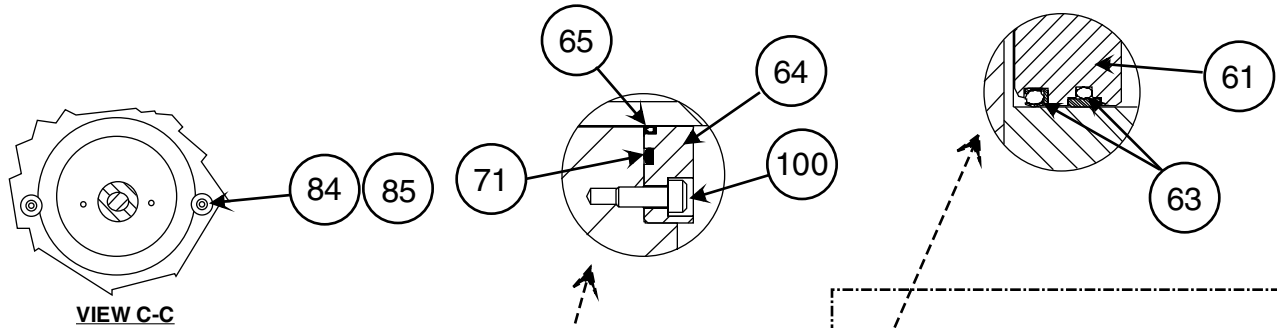
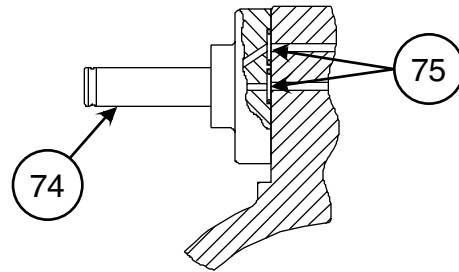
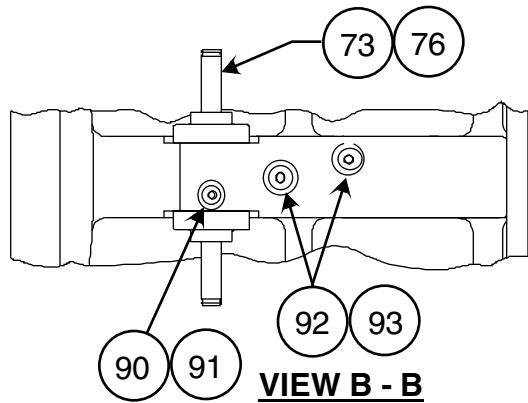
(USE VIEW FOR COMPRESSOR TYPES "C" & "D")

Graphics Page: 10
Litho in U.S.A

Note: See "Catalog Notes" on last page for explanation of symbolism.



Electronic Graphics 2300510



**COMPRESSOR TYPE "C"
SLIDE VALVE ASY**

Graphics Catalog

Catalog No: RCD-3523-005 (7/00)

Rev.

Supersedes: NEW

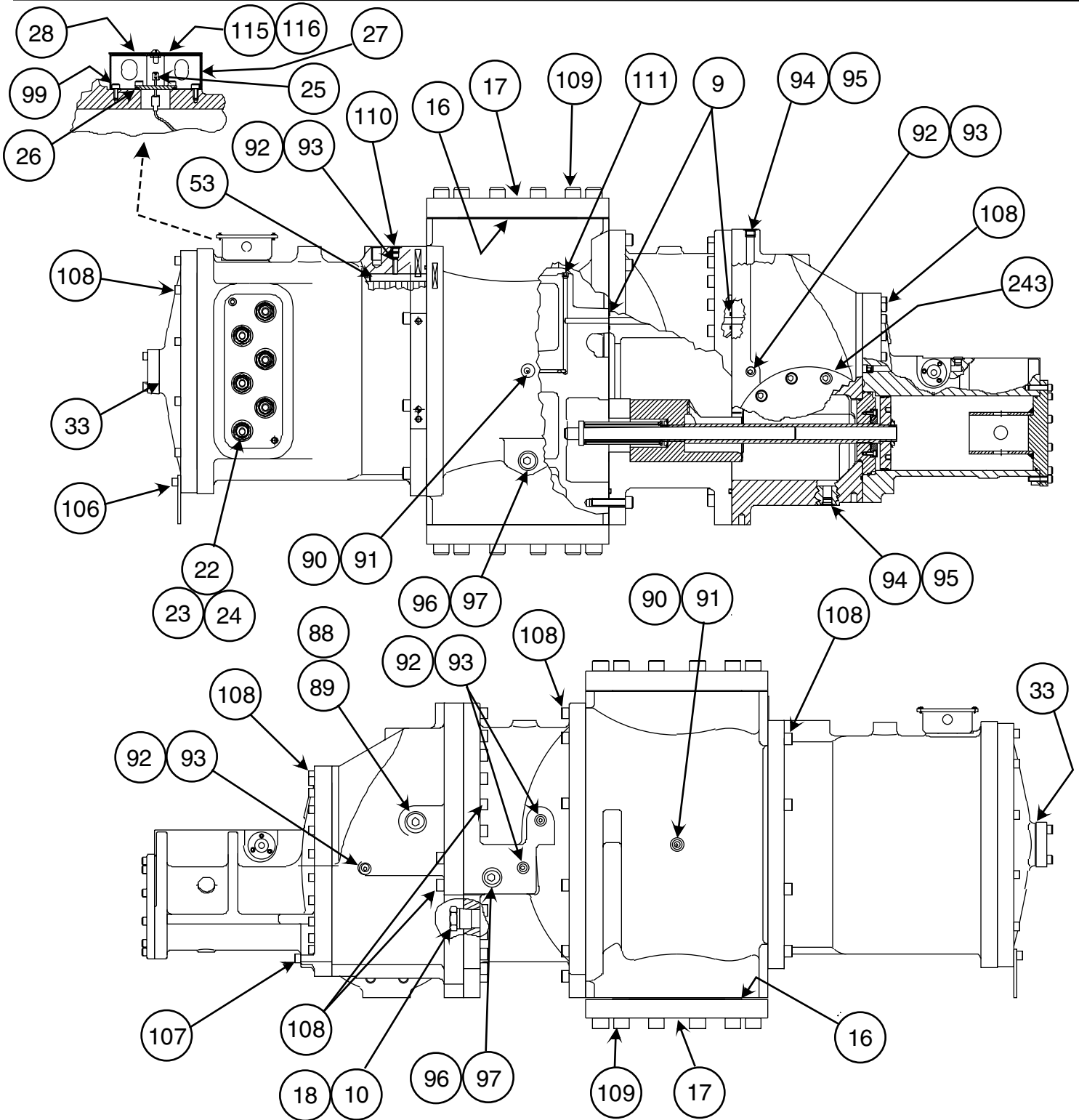
Rev.

Note: See "Catalog Notes" on last page for explanation of symbolism.

Graphics Page: 11

Litho in U.S.A





COMPRESSOR "D" TYPE

Graphics Catalog

Catalog No: RCD-3523-005 (7/00)

Rev.

Supersedes: NEW

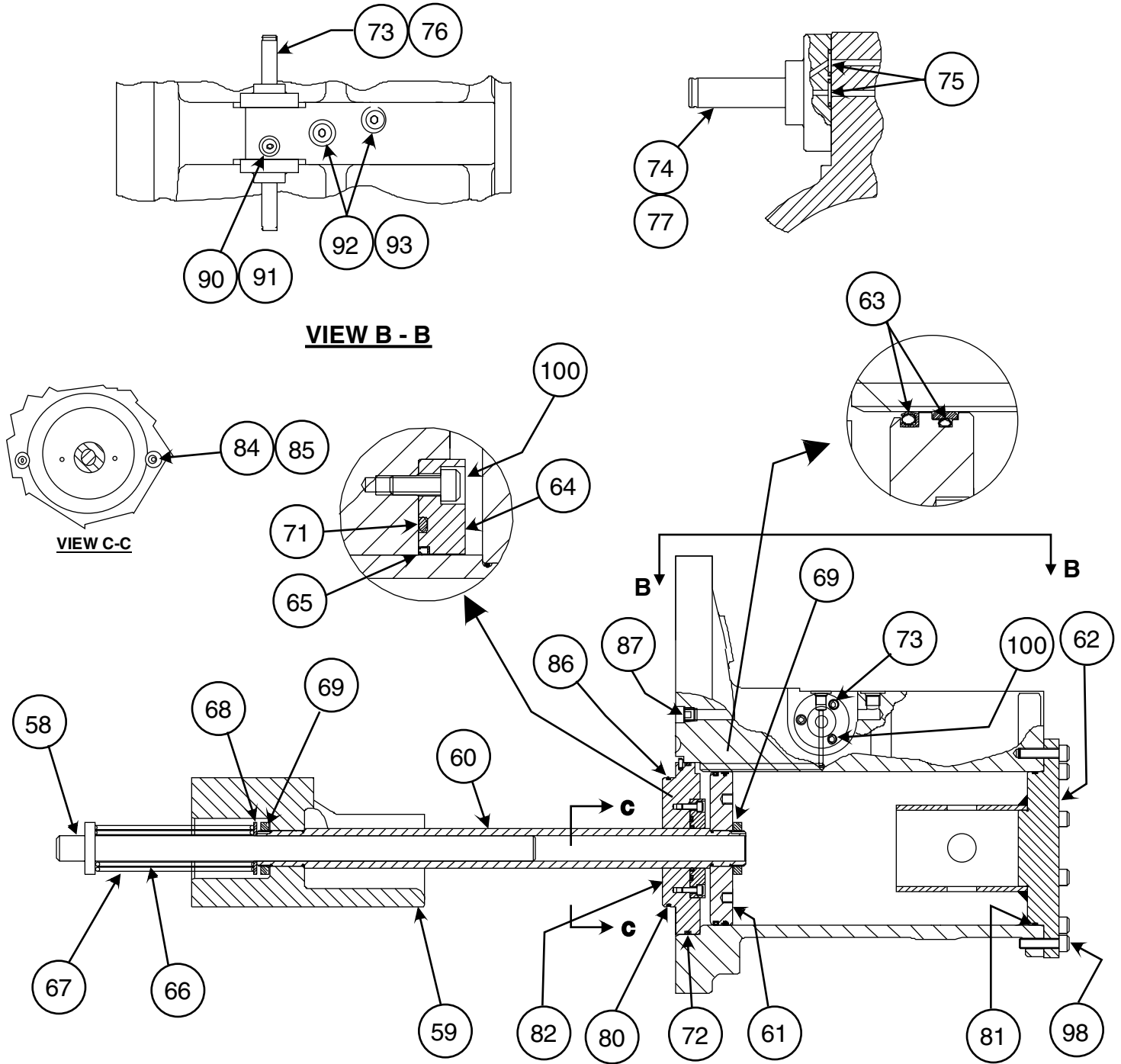
Rev.

Note: See "Catalog Notes" on last page for explanation of symbolism.

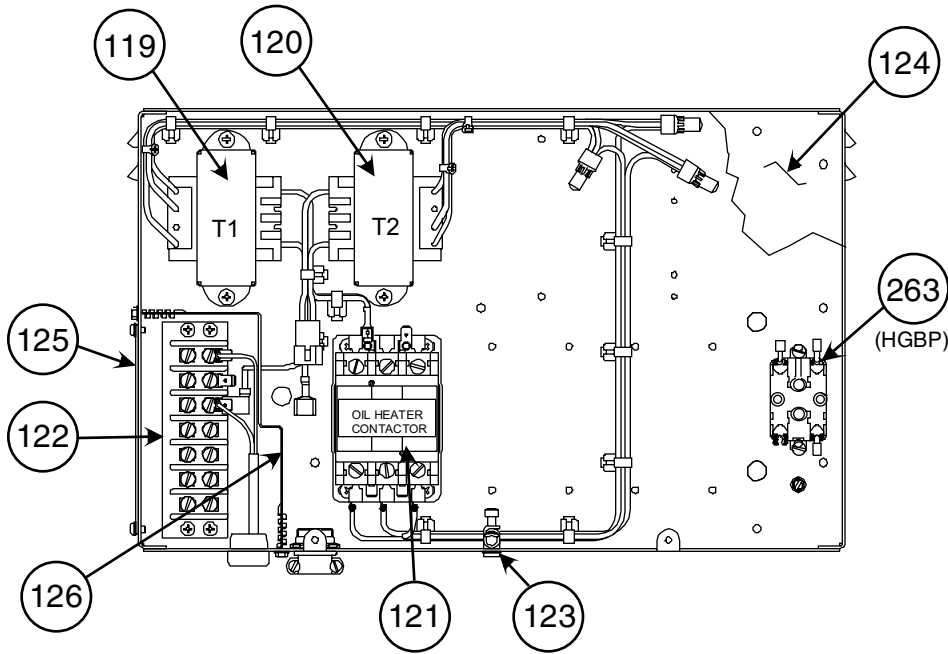
Graphics Page: 12

Litho in U.S.A

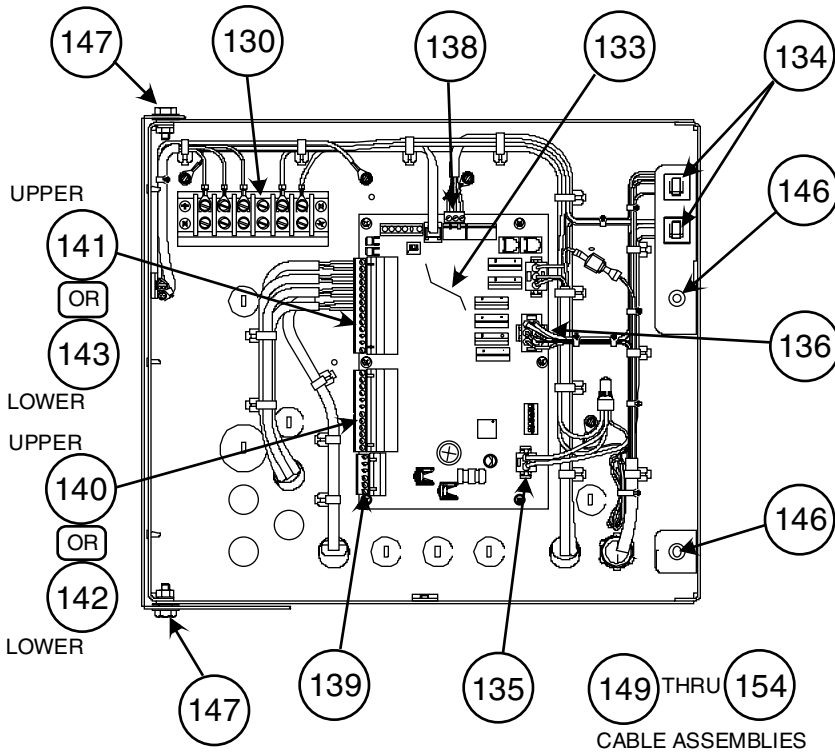
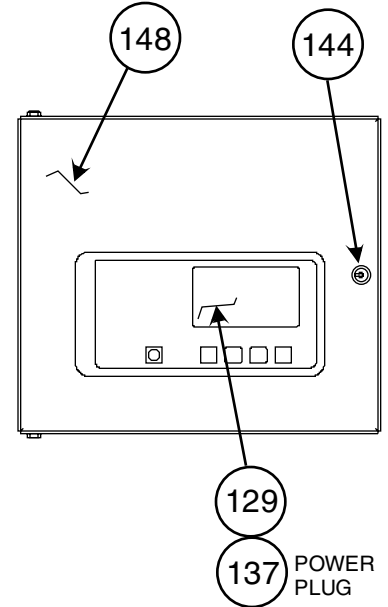




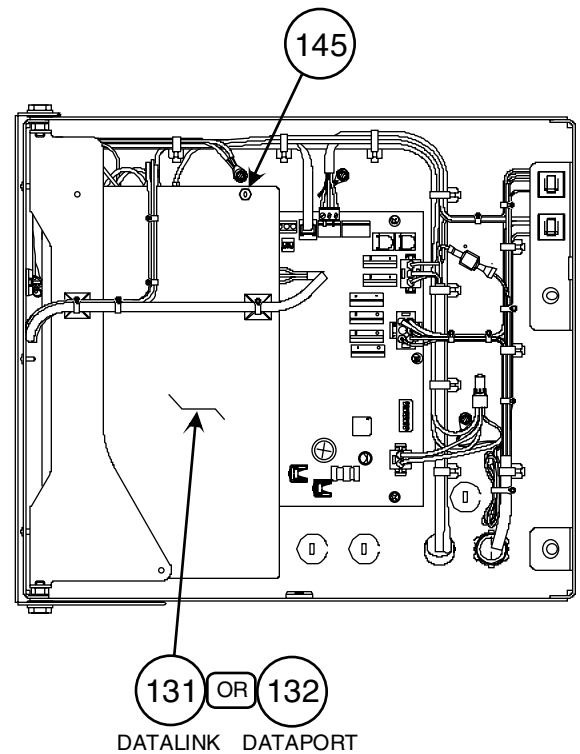
**COMPRESSOR TYPE "D"
SLIDE VALVE ASY**



**PIC II POWER PANEL
SHOWN WITH ALL OPTIONS**



PIC II CONTROL PANEL (128)



DATALINK DATAPORT

Graphics Catalog

Catalog No: RCD-3523-005 (7/00)

Rev.

Supersedes: NEW

Rev.

Note: See "Catalog Notes" on last page for explanation of symbolism.

Graphics Page: 14

Litho in U.S.A





HERMETIC SCREW LIQUID
CHILLER

23XL

SIZE: 001 004
SERIES: HOWDEN

ITM	PART DESCRIPTION	23XL-----C40.	23XL-----C60.	23XL-----D40.	23XL-----D60.
		HOWDEN	HOWDEN	HOWDEN	HOWDEN
TO DETERMINE COMPRESSOR TYPE REFER TO COMPRESSOR SERIAL NUMBER					
"H" IN THE 9TH POSITION = HOWDEN OR "G" IN 9TH POSITION = INGERSOLL					
COMPRESSOR GROUP					
1	MATCHED ROTOR SET	23XL660002	23XL660003	0TD1212	0TD1202
	NOTE: INCLUDES ITEM 2.				
2	MALE & FEMALE ROTORS	NOT SOLD SEPARATE	->	->	->
3	O-RING (365 X 5 MM)	(2) 8TC0116C	(2) ->	X	X
4	O-RING (443 X 7 MM)	8TC0115C	->	X	X
5	O-RING (393 X 7 MM)	8TC0116C	->	X	X
6	O-RING (308 X 5 MM)	8TC0117C	->	X	X
7	O-RING (94 X 3 MM)	(2) 8TC0155C	(2) ->	X	X
8	O-RING (215 X 7 MM)	8TC0344C	->	X	X
9	O-RING (25 X 4 MM)	(2) 8TC0151C	(2) ->	(2) ->	(2) ->
10	O-RING (37 X 3 MM)	(2) 8TC0288C	(2) ->	(2) ->	(2) ->
11	O-RING (431 X 5 MM)	X	X	(2) 8TD0080C	(2) ->
12	O-RING (494 X 7 MM)	X	X	8TD0088C	->
13	O-RING (456 X 7 MM)	X	X	8TD0081C	->
14	O-RING (350 X 5 MM)	X	X	8TD0082C	->
15	O-RING (104 X 3 MM)	X	X	(2) 8TD0083C	(2) ->
16	O-RING (253 X 7 MM)	X	X	(2) 8TD0124C	(2) ->
17	COVER,SUCTION	(2) 1TC0248C	(2) ->	(2) 1TD0098C	(2) ->
18	VALVE,RELIEF (1-5/8 X 12)	(2) EB51ZH452	(2) ->	(2) ->	(2) ->
19A	MOTOR (400/460-3-50/60)	X	X	X	X
19B	MOTOR (208/230-3-60)	X	X	X	X
19C	MOTOR (575-3-60)	X	X	X	X
19D	MOTOR (345/400-3-50/60)	X	X	X	X
20	SENSOR,MOTOR WINDING (RTD)	(2) 32MP500354	(2) ->	(2) ->	(2) ->
21	SPACER,MOTOR	1TC0150D	->	->	->
22	TERMINAL PIN	(6) HY85AA062	(6) ->	(6) ->	(6) ->
23	O-RING,TERMINAL PIN	(6) KK71EW914	(6) ->	(6) ->	(6) ->
24	WASHER,SPRING	(6) AU51AS543	(6) ->	(6) ->	(6) ->
25	HERMETIC TERMINAL	HY85FP022	->	->	->
26	O-RING,HERMETIC TERMINAL	KK71EW128	->	->	->
27	BOX,JUNCTION	HX22FB053	->	->	->
28	COVER,JUNCTION BOX	HX02ZZ001	->	->	->
29	KEY,ROTOR	1TC0267C	->	1TD0097C	->
30	WASHER,ROTOR PLATE	1TC0400C	->	1TD0172C	->
31	LOCKWASHER,ROTOR	6TC0065C	->	6TD0114C	->
32	HEAT SHRINK TUBING	(3) 1F33MM112	(3) ->	(3) ->	(3) ->
33	GASKET,MOTOR COOLING CONN. (4 BOLT)	7TC0189C	->	->	->
34	PLUG,ORIFICE	1TC0044C	->	->	->
35	PLUG,ORIFICE (FEMALE)	1TC0052C	->	->	->
36	BEARING,FEMALE ROTOR	8TC0077C	->	8TC0076C	->
37	BEARING,MALE ROTOR	8TC0078C	->	8TD0066C	->
38	SLEEVE,FEMALE ROTOR	1TC0028C	->	1TD0052D	->
39	SLEEVE,MALE ROTOR	1TC0404D	->	1TD1216	->
40	BEARING,POLAMIDE CAGE	(2) 8TC0076C	(2) ->	(2) 8TD0062C	(2) ->
41	SPACER,BEARING INNER	(2) 1TC0037C	(2) ->	(2) 1TD0054C	(2) ->
42	SPACER,BEARING,OUTER	(2) 1TC0030C	(2) ->	(2) 1TD0055C	(2) ->
43	SPACER,MALE ROTOR	1TC0397C	->	1TD0104C	->
44	SPACER,FEMALE ROTOR	1TC0038C	->	1TD0061C	->
45	ORIFICE RING	(2) 1TC0143D	(2) ->	(2) 1TD0053D	(2) ->
46	ROLL PIN (3 X 8 MM)	(2) 8TC0070C	(2) ->	(2) ->	(2) ->
47	BEARING RETAINER	(2) 1TC0067C	(2) ->	(2) 1TD0060C	(2) ->
48	WASHER,SPRING	(2) 8TC0073C	(2) ->	(2) 8TD0096C	(2) ->

PARTS LIST CATALOG

PARTS LIST PAGE: 001

CATALOG NO.: REV.
SUPERSEDES: REV.

NOTE: SEE "CATALOG NOTES" ON LAST PAGE FOR EXPLANATION OF SYMBOLISM.



HERMETIC SCREW LIQUID
CHILLER

23XL

SIZE: 001 004
SERIES: HOWDEN

ITM	PART DESCRIPTION	23XL-----C40.		23XL-----C60.		23XL-----D40.		23XL-----D60.	
			HOWDEN		HOWDEN		HOWDEN		HOWDEN
COMPRESSOR GROUP									
49	BALL BEARING,POLYAMIDE CAGE	(5)	8TC0074C	(5)	->	(5)	8TD0063C	(5)	->
50	BALL BEARING,BRASS CAGE		8TC0391C		->		8TD0148C		->
51	O-RING,DISCHARGE (190 X 7 MM)		8TC0343C		->		8TC0344C		->
52	SPACER,MALE INLET		1TC0249C		->		1TD0099D		->
53	KEY,STATOR		1TC0066C		->		1TD0100C		->
54	DOWEL PIN,ROUND (19 X 57 MM)	(3)	8TC0244C	(3)	->	(3)	->	(3)	->
55	DOWEL PIN,DIAMOND (19 X 57 MM)	(3)	1TC0245C	(3)	->	(3)	->	(3)	->
56	DOWEL PIN,ROUND (12 X 32 MM)		8TC0246C		->		->		->
57	DOWEL PIN,DIAMOND (12 X 32 MM)		1TC0247C		->		->		->
58	RETAINER,SPRING		1TC0228C		->		->		->
59	SLIDE VALVE		1TC0238D		1TC0240D		1TD1205		1TD1201
60	SLIDE ROD,CAPACITY		1TC0448C		1TC0449C		1TD0213D		1TD0216D
61	PISTON,SLIDE VALVE (35MM)		1TC0033C		->		1TD0044D		->
62	COVER,SLIDE VALVE		1TC0440C		1TC0441C		1TD1239		1TD0072D
63	GUIDE/SEAL ASSEMBLY	(2)	8TC0053C	(2)	->	(2)	8TD0075D	(2)	->
64	SLIDE SEAL ADAPTER		1TC0226C		->		->		->
65	SEAL RING		8TC0057C		->		->		->
66	SPRING,UNLOADER (INNER)		8TC0137C		8TC0167C		8TC0137C		8TC0167C
67	SPRING,UNLOADER (OUTER)		X		X		8TC0166C		8TC0168C
68	WASHER		8TC0145C		->		->		->
69	COLLAR,LOCKING (35MM)	(2)	KT51HZ100	(2)	->	(2)	->	(2)	->
70	LOCKWASHER	(2)	8TC0051C	(2)	->	(2)	->	(2)	->
71	O-RING (57 X 3.5 MM)		KK71EW228		->		->		->
72	O-RING (165 X 3.5 MM)		X		X		8TC0119C		->
73	CAPACITY CONTROL VALVE PACKAGE	(2)	23XL660001	(2)	->	(2)	->	(2)	->
NOTE: INCLUDES ITEMS 74 - 76.									
74	VALVE,CAPACITY CONTROL		2TC0025D		->		->		->
75	O-RING (8 X 2.5 MM)	(2)	8TC0154C	(2)	->	(2)	->	(2)	->
76	SCREW,SOCKET HEAD	(3)	8TC0092C	(3)	->	(3)	->	(3)	->
77	SOLENOID COIL (24V)	(2)	P510-AMG/24V	(2)	->		EF19ZE025		->
NOTE: SOLENOID COIL NOT SOLD IN CAPACITY CONTROL PACKAGE, MUST BE ORDERED SEPARATELY.									
78	O-RING (111 X 3.5 MM)		KK71EW245		->		X		X
79	O-RING		KK71EW252		->		X		X
80	O-RING (123.5 X 3.5 MM)		X		X		8TD0089C		->
81	O-RING (149 X 3.5 MM)		X		X		8TD0087C		->
82	PLUG,SLIDE CASING		1TC0417D		->		1TD0050D		->
83	O-RING (152 X 3.5MM)		8TC0418C		->		X		X
84	WASHER	(2)	8TD0206C	(2)	->	(2)	->	(2)	->
85	SCREW,BUTTON	(2)	8TD0207C	(2)	->	(2)	->	(2)	->
86	DOWEL PIN		8TD0208C		->		->		->
87	PIPE PLUG (1/4 NPT)		CA64AT051		->		->		->
88	HOLLOW HEX PLUG (1-3/16-12)		X		X		8TD0105C		->
89	O-RING,1-3/16 HOLLOW HEX PLUG		X		X		KK71EW914		->
90	HOLLOW HEX PLUG (7/16-20)	(4)	8TC0106C	(4)	->	(4)	->	(4)	->
91	O-RING,7/16 HOLLOW HEX PLUG	(4)	KK71EW904	(4)	->	(4)	->	(4)	->
92	HOLLOW HEX PLUG (9/16-18)	(7)	8TC0107C	(7)	->	(10)	->	(10)	->
93	O-RING,9/16 HOLLOW HEX PLUG	(7)	KK71EW906	(7)	->	(10)	->	(10)	->
94	HOLLOW HEX PLUG (3/4-16)	(2)	8TC0108C	(2)	->	(2)	->	(2)	->
95	O-RING,3/4 HOLLOW HEX PLUG	(2)	KK71EW908	(2)	->	(2)	->	(2)	->
96	HOLLOW HEX PLUG (1-1/16-12)	(3)	8TC0109C	(3)	->	(2)	->	(2)	->
97	O-RING,1-1/16 HOLLOW HEX PLUG	(3)	KK71EW912	(3)	->	(2)	->	(2)	->
NOTE: HARDWARE USED TO ASSEMBLE COMPRESSOR ARE METRIC. HARDWARE USED ON OTHER MACHINE COMPONENTS ARE ENGLISH.									

PARTS LIST CATALOG

PARTS LIST PAGE: 002

CATALOG NO.: REV.
SUPERSEDES : REV.

NOTE: SEE "CATALOG NOTES" ON LAST PAGE FOR EXPLANATION OF SYMBOLISM.



HERMETIC SCREW LIQUID
CHILLER

23XL

SIZE: 001 004
SERIES: HOWDEN

ITM	PART DESCRIPTION	23XL-----C40.		23XL-----C60.		23XL-----D40.		23XL-----D60.	
		HOWDEN		HOWDEN		HOWDEN		HOWDEN	
COMPRESSOR GROUP									
98	SOCKET HEAD CAPSCREW (M10-1.5 X 40)	(8)	8TC0094C	(8)	->	(10)	->	(10)	->
99	SOCKET HEAD CAPSCREW (M6-0.8 X 12)	(6)	8TC0091C	(6)	->	(10)	->	(10)	->
100	SOCKET HEAD CAPSCREW (M6-1 X 16)	(10)	8TC0092C	(10)	->	(10)	->	(10)	->
101	SOCKET HEAD CAPSCREW (M12-1.75 X 40)	(4)	8TC0096C	(4)	->	(4)	->	(4)	->
102	SOCKET HEAD CAPSCREW (M12-1.75 X 50)	(42)	8TC0097C	(42)	->		X		X
103	SOCKET HEAD CAPSCREW (M12-1.75 X 60)	(2)	8TC0098C	(2)	->	(30)	->	(30)	->
104	SOCKET HEAD CAPSCREW (M16-2 X 55)	(42)	8TC0100C	(42)	->		X		X
105	SOCKET HEAD CAPSCREW (MM20-2.5 X 70)	(24)	8TC0101C	(24)	->		X		X
106	SOCKET HEAD CAPSCREW (M12-1.75 X 70)		X		X	(2)	8TD0108C	(2)	->
107	SOCKET HEAD CAPSCREW (M12-1.75 X 90)		X		X	(4)	8TD0109C	(4)	->
108	SOCKET HEAD CAPSCREW (M16-2 X 70)		X		X	(58)	8TD0110C	(58)	->
109	SOCKET HEAD CAPSCREW (M22-2.5 X 80)		X		X	(24)	8TD0111C	(24)	->
110	SOCKET HEAD SET SCREW(M10-1.5 X 30)		8TC0089C		->		->		->
111	PIPE PLUG (1/8 NTPF)	(2)	CA64AA001	(2)	->	(2)	->	(2)	->
112	HEX HEAD CAPSCREW (M10-1.5 X 50)		8TC0104C		->		->		->
113	HEX HEAD CAPSCREW (M10-1.5 X 35)	(6)	8TC0103C	(6)	->	(6)	->	(6)	->
114	SHIM PACKAGE		23XL660005		->		23XL660019		->
	NOTE: SHIM PACKAGE CONTAINS 8 SHIMS IN 3 THICKNESSES, NO MORE THAN 3 SHIMS ARE TO BE USED TO OBTAIN REQUIRED CLEARANCE.								
115	SCREW,THREAD FORMING	(2)	8TC0294C	(2)	->	(2)	->	(2)	->
116	WASHER,EXTERNAL (LOCKTOOTH)	(2)	AU27AS131	(2)	->	(2)	->	(2)	->
117	VALVE PAD (BLANK-OFF)		8TC0141C		->		->		->
PIC II CONTROLS GROUP									
118	POWER PANEL ASY		23XL04010901		->		->		->
	NOTE: INCLUDES ITEMS 119 - 127.								
119	TRANSFORMER (T1)		HT01AN235		->		->		->
120	TRANSFORMER (T2)		HT01AN235		->		->		->
121	CONTACTOR,OIL HEATER		HN53CC024		->		->		->
121A	AUXILIARY CONTACTOR,SIDE MOUNT		HN53AB035		->		->		->
122	BOARD,TERMINAL		19XR05013101		->		->		->
123	GROUND LUG		HY90HR001		->		->		->
124	COVER,POWER PANEL		19XB05000301		->		->		->
125	COVER,LO-VOLTAGE ACCESS		19XR05000401		->		->		->
126	BARRIER,LO-VOLTAGE		19XB05000401		->		->		->
127	CABLE,OIL PUMP SOLENOID (2 WIRE)		23XL04010801		->		->		->
128A	CONTROL PANEL (PIC II STANDARD)		23XL04011201		->		->		->
128B	CONTROL PANEL (PIC II W/DATAPORT)		23XL04011202		->		->		->
128C	CONTROL PANEL (PIC II W/DATALINK)		23XL04011203		->		->		->
	NOTE: INCLUDES ITEMS 129 - 154.								
129	CONTROLLER,CHILLER VISUAL (CVC)		23XL04009801		->		->		->
130	BLOCK,TERMINAL		23XL05007901		->		->		->
131	MODULE,DATALINK		CEFA121549-02		->		->		->
132	MODULE,DATAPORT		CEPL130363-01		->		->		->
133	MODULE,CHILLER CONTROL (CCM)		CESD130038		->		->		->
134	BREAKER,CIRCUIT	(2)	HH83ZB001	(2)	->	(2)	->	(2)	->
135	CONNECTOR (2 PIN)		HY06AM015		->		->		->
136	CONNECTOR (6 PIN)		HY06MP106		->		->		->
137	CONNECTOR (5 PIN)		HY07MP505		->		->		->
138	CONNECTOR (3 PIN)		HY84EE103		->		->		->
139	CONNECTOR (6 PIN)		HY84EE106		->		->		->
140	CONNECTOR (12 PIN)		HY84EE112		->		->		->
141	CONNECTOR (14 PIN)		HY84EE114		->		->		->
142	CONNECTOR (12 PIN)		HY84EE132		->		->		->
143	CONNECTOR (14 PIN)		HY84EE134		->		->		->

PARTS LIST CATALOG

PARTS LIST PAGE: 003

CATALOG NO.: REV.
SUPERSEDES: REV.

NOTE: SEE "CATALOG NOTES" ON LAST PAGE FOR EXPLANATION OF SYMBOLISM.



HERMETIC SCREW LIQUID
CHILLER

23XL

SIZE: 001 004
SERIES: HOWDEN

ITM	PART DESCRIPTION	23XL-----C40.	23XL-----C60.	23XL-----D40.	23XL-----D60.
		HOWDEN	HOWDEN	HOWDEN	HOWDEN
PIC II CONTROLS GROUP					
144	CAM LOCK (W/KEYS)	KA19NL010	->	->	->
145	SPACER #6-32 MALE/FEMALE	KA56CS092	->	->	->
146	RUBBER BUMPER	KA58MR001	->	->	->
147	BOLT, SHOULDER (SPECIAL)	(2) 19XR05007401	(2) ->	(2) ->	(2) ->
148	COVER, PANEL	19XR05007501	->	->	->
149	CABLE ASY, TRANSDUCER (3-WIRE 175")	19XB660006	->	->	->
150	CABLE ASY, TRANSDUCER (3-WIRE 205")	19XB660003	->	->	->
151	CABLE ASY, TRANSDUCER (3-WIRE 600")	19XB660008	->	->	->
152	CABLE ASY, SENSOR (2-WIRE 300")	HH79NZ064	->	->	->
153	CABLE ASY (10-WIRE)	23XL04009401	->	->	->
154	CABLE ASY (SLIDE VALVE)	23XL04009501	->	->	->
NOTE: ITEMS 154a THRU 154d MAY BE REPLACED BY GENARIC CABLE ASSEMBLIES					
2 WIRE (ITEM 152) AND A 3 WIRE (ITEMS 149, 150 OR 151)					
154A	CABLE ASY(CLR ENT WTR PRESS. & TEM	23XL04011101	->	->	->
154B	CABLE ASY(CLR LVG WTR PRESS. & TEM	23XL04011102	->	->	->
154C	CABLE ASY(COND ENT WTR PRESS. & TE	23XL04011103	->	->	->
154D	CABLE ASY(COND LVG WTR PRESS. & TE	23XL04011104	->	->	->
155 N	SWITCH, HIGH PRESSURE CUTOUT	HK02ZA260	->	->	->
156 N	SWITCH, OIL LEVEL & OIL SUMP TEMP.	HK13LB009	->	HK13LB008	->
NOTE: REFER TO SERVICE BULLETIN C0121.					
157 N	COIL ASY, SOLENOID (CAPACITY CONTROL)	(2) P510-AMG/24V	(2) ->	(2) ->	(2) ->
158 N	SENSOR, TEMPERATURE	(4) HH79NZ047	(4) ->	(4) ->	(4) ->
159 N	TRANSDUCER, PRESSURE	(7) HK05Y2007	(7) ->	(7) ->	(7) ->
159AN	CORE, SERVICE FITTING	EC39DM062	->	->	->
159BN	BODY, SERVICE FITTING	EC39DM061	->	->	->
160 N	RELAY, PILOT (HGBP)	HM61KK324	->	->	->
161 N	SENSOR, THERMISTOR	HH79NZ059	->	->	->
162 N	MODULE, INTEGRATED STARTER (ISM)	CES0130037	->	->	->
NOTE: INCLUDES ITEM 163.					
163 N	FUSE, ISM MODULE (1 AMP)	ATO-1	->	->	->
MACHINE ARRANGEMENT & PIPING					
164	EJECTOR	17EA0131572	->	X	X
165	GASKET, RING (6-5/8")	19XB55002502	->	(2) ->	(2) ->
166	GASKET, RING (4-1/2")	(2) 19XB55002506	(2) ->	X	X
167	GASKET, RING (8-5/8")	X	X	19XB55002503	->
168	GASKET, RING (5-1/2")	X	X	19XB55002508	->
169	GASKET, RING (4-1/4")	19XB55002507	->	X	X
170	DRIER, FILTER (MOTOR COOLING)	KH41MG278	->	->	->
171	ORIFICE, OIL SUPPLY (.150)	23XL15000601	->	X	X
172	ORIFICE, OIL SUPPLY (0.90)	23XL15000701	->	->	->
173	ORIFICE, REFRIG. SUPPLY (0.13)	X	X	23XL45011101	->
NOTE: INCLUDES ITEM 174.					
174	O-RING	X	X	KK71EW906	->
175	O-RING, OIL SEPERATOR COVER	23XL25007802	->	X	X
176	FELT RING	23XL25014501	->	X	X
177	ELEMENT, OIL SEPERATOR (W/FELT RING)	23XL25017001	->	X	X
178	SIGHTGLASS, OIL SEPARATOR	KM36BS162	->	X	X
NOTE: INCLUDES ITEM 179.					
179	O-RING	KK71EW920	->	X	X
180	INDICATOR, MOISTURE	AM11SS5	->	->	->
181	NOZZLE ASY, MOTOR COOLING	23XL24007301	->	->	->
182	VALVE, SOLENOID (OIL SUPPLY LINE)	EF23.M271	->	EF23.M332	->
183	COIL, SOLENOID (24V-1-50/60)	P510-AMG/24V	->	->	->
184	REBUILD KIT, SOLENOID VALVE EF23.M27	KS-E34	->	X	X

PARTS LIST CATALOG

PARTS LIST PAGE: 004

CATALOG NO. : REV.
SUPERSEDES : REV.

NOTE: SEE "CATALOG NOTES" ON LAST PAGE FOR EXPLANATION OF SYMBOLISM.



HERMETIC SCREW LIQUID
CHILLER

23XL

SIZE: 001 004
SERIES: HOWDEN

ITM	PART DESCRIPTION	23XL-----C40.	23XL-----C60.	23XL-----D40.	23XL-----D60.
		HOWDEN	HOWDEN	HOWDEN	HOWDEN
MACHINE ARRANGEMENT & PIPING					
185	VALVE,BALL (5/8")	(2) EP71BA211	(2) ->	(2) ->	(2) ->
186	VALVE,BALL (7/8")	(2) 900307	(2) ->	X	X
187	VALVE,BALL (1-1/8")	X	X	(2) EP71BA331	(2) ->
188	VALVE,BALL (2-1/8")	X	X	EP71BA511	->
189	GASKET,ECON. FLOAT VALVE	23XL45001801	->	->	->
190	SCREW,SOCKET HEAD (M12 X 1.75, 55LG)	(4) 23XL25004403	(4) ->	(4) ->	(4) ->
191	SCREW,SOCKET HEAD (M16 X 2.0, 25LG)	23XL25004404	->	(2) ->	(2) ->
192	SCREW,SOCKET HEAD (M6 X 1.0, 16LG)	(4) 23XL25004405	(4) ->	X	X
193	SCREW,SOCKET HEAD (M6 X 1.0, 25LG)	X	X	(4) 23XL25004406	(4) ->
194	CONNECTOR (1/4-20 NPT X 3/8 TUBE)	(2) DC09SA110	(2) ->	(2) ->	(2) ->
195	CONNECTOR (7/8-14 NPT X 5/8 TUBE)	(2) DC09SA307	(2) ->	->	->
196	REDUCER (1/2 TUBE X 3/4 O.D.)	DC21CA010	->	->	->
197	CONNECTOR,STR. (9/16-18 X 3/8 TUBE)	(2) DC80SA005	(2) ->	->	->
NOTE: INCLUDES ITEM 198.					
198	O-RING	KK71EW906	->	->	->
199	CONNECTOR,STR. (3/4-16 X 1/2 TUBE)	DC80SA010	->	->	->
NOTE: INCLUDES ITEM 200.					
200	O-RING	KK71EW908	->	->	->
201	CONNECTOR,STR. (1-1/16-12 X 3/4 TUBE)	DC80SA030	->	(3) ->	(3) ->
NOTE: INCLUDES ITEM 202.					
202	O-RING	KK71EW912	->	->	->
203	COUPLING (3/8 NPT X 3/8 FLARE)	DD08DA101	->	X	X
204	COUPLING (1/2 NPT X 3/8 FLARE)	DD08DA104	->	X	X
205	COUPLING (1/2 NPT X 1/2 FLARE)	DD08DA201	->	X	X
206	CONNECTOR,ELBOW (3/4 X 1-1/16)	(4) DC83SA030	(4) ->	X	X
NOTE: INCLUDES ITEM 207.					
207	O-RING	KK71EW912	->	X	X
208	CONNECTOR,ELBOW (9/16-18)	(6) DC83SA010	(6) ->	(3) ->	(3) ->
NOTE: INCLUDES ITEM 209.					
209	O-RING	KK71EW906	->	->	->
210	CONNECTOR,TEE (1-1/16-12)	DC89SA001	->	->	->
NOTE: INCLUDES ITEM 211.					
211	O-RING	KK71EW912	->	->	->
212	CONNECTOR,ELBOW (3/4-16)	DC83SA020	->	->	->
NOTE: INCLUDES ITEM 213.					
213	O-RING	KK71EW908	->	->	->
214	CONNECTOR,ELBOW (7/8-14)	X	X	DC83SA025	->
NOTE: INCLUDES ITEM 215.					
215	O-RING	X	X	KK71EW910	->
216	CONNECTOR,ELBOW (7/8 X 1-3/16)	X	X	DC83SA035	->
NOTE: INCLUDES ITEM 217.					
217	O-RING	X	X	KK71EW914	->
218	GASKET,FLARE (3/8)	DD26FA101	->	X	X
219	VALVE,RELIEF (3/4")	(3) EB51FZ242	(3) ->	(2) ->	(2) ->
220	VALVE,RELIEF (3/8 X 1/2)	EB51LH101	->	X	X
221	VALVE,RELIEF (1-1/4 X 1)	X	X	(2) 19XB660001	(2) ->
222	VALVE,RELIEF (1 X 1)	X	X	(2) EB51FZ316	(2) ->
223	VALVE,ANGLE (1/4 X 3/8) (ON COND.)	EP20LA095	->	X	X
224	VALVE,ANGLE (3/8 X 3/8)	EP23LC150	->	X	X
225	VALVE,BALL (1/2)	(3) EP71CA183	(3) ->	->	->
226	VALVE,BALL (3/4") (OIL SEPERATOR)	X	X	EP71CQ243	->
227	VALVE,BALL (1")	X	X	(2) EP71CQ324	(2) ->
228	VALVE,BALL (1-5/8)	EP71BA651	->	X	X
229	VALVE,SHUTOFF (3/4")	8022A	->	->	->

PARTS LIST CATALOG

PARTS LIST PAGE: 005

CATALOG NO.: REV.
SUPERSEDES: REV.

NOTE: SEE "CATALOG NOTES" ON LAST PAGE FOR EXPLANATION OF SYMBOLISM.



HERMETIC SCREW LIQUID
CHILLER

23XL

SIZE: 001 004
SERIES: HOWDEN

ITM	PART DESCRIPTION	23XL-----C40.	23XL-----C60.	23XL-----D40.	23XL-----D60.
		HOWDEN	HOWDEN	HOWDEN	HOWDEN
MACHINE ARRANGEMENT & PIPING					
230	VALVE,SHUTOFF (1")	X	X	EP83CC301	->
231	VALVE,BUTTERFLY)(ISOLATION VALVE)	ER39MZ814	->	ER39MZ812	->
232	PLATE,DISCHARGE VALVE LOCKING	X	X	23XL25001901	->
233	HEATER,OIL	HT36AZ120	->	X	X
	NOTE: INCLUDES ITEM 234.				
234	O-RING,OIL HEATER	KK71EW920	->	X	X
235	STRAINER,REFRIGERANT	(2) KH11NG070	(2) ->	X	X
236	HOUSING,FILTER	KH18MB003	->	->	->
	NOTE: INCLUDES ITEMS 236A - 236B.				
236A	CORE,BLEED PORT VALVE	EC39DM062	->	->	->
236B	CAP,BLEED PORT VALVE	99CC409372	->	->	->
237	O-RING & OIL FILTER PACKAGE	23XL660016	->	->	->
	NOTE: INCLUDES ITEMS 238 - 239.				
238	O-RING,OIL FILTER	KK71EW154	->	->	->
239	FILTER,CARTRIDGE	KH39MB003	->	->	->
240	O-RING (2-1/4)	KK71EW228	->	X	X
241	O-RING (2-3/8")	KK71EW229	->	(2) ->	(2) ->
242	O-RING,COMPR. DISCHARGE	8TC0343C	->	X	X
243	GASKET,COMPR. DISCHARGE (12 BOLT)	X	X	23XL45001301	->
243A	FLANGE,COND. DRAIN (4-BOLT)	DK16CB302	->	DK16CB702	->
244	GAUGE,COMPOND	KM03AF300	->	->	->
245	SIGHTGLASS (OIL SEPERATOR)	X	X	(2) KM36R2002	(2) ->
246	SCREEN ASSEMBLY,FLOAT	09XB04000601	->	09XB04000901	->
247	GASKET,COND. FLOAT VALVE	09XB25004201	->	09XB45001901	->
248	VALVE ASY,FLOAT (COND./ECON LINEAR T	(2) 09XB04001301	(2) ->	(2) 23XL44001001	(2) ->
	NOTE: INCLUDES ITEMS 249 - 250.				
249	SHAFT,FLOAT	09XB05004101	->	->	->
250	RING,RETAINING	(3) AU45AZ025	(3) ->	(3) ->	(3) ->
251	VALVE ASY,DISCHARGE CHECK	23XL24002401	->	23XL44002601	->
	NOTE: INCLUDES ITEMS 252 - 254.				
252	PIN	23XL25003301	->	23XL45001901	->
253	DOOR	NOT SOLD SEPARATELY	->	->	->
254	RING,SNAP	(2) AU45AR038	(2) ->	(2) ->	(2) ->
255	COOLER TUBES (SEE NOTE)	TUBE QUANTITY	->	->	->
	NOTE: TO OBTAIN THE PROPER TUBES FOR YOUR PARTICULAR MACHINE CONTACT YOUR CARRIER REPRESENTATIVE. YOU MUST PROVIDE MACHINE SERIAL NO.				
255A	COOLER TUBE QTY. (COOLER CODE 10)	175	->	X	X
255B	COOLER TUBE QTY. (COOLER CODE 11)	220	->	X	X
255C	COOLER TUBE QTY. (COOLER CODE 20)	235	->	X	X
255D	COOLER TUBE QTY. (COOLER CODE 21)	277	->	X	X
255E	COOLER TUBE QTY.(COOL. CODE 30,40,45)	X	X	201	->
255F	COOLER TUBE QTY.(COOL. CODE 31,41,46)	X	X	227	->
255G	COOLER TUBE QTY.(COOL. CODE 32,42,47)	X	X	257	->
255H	COOLER TUBE QTY.(COOL. CODE 33,43,48)	X	X	290	->
256	CONDENSER TUBES (SEE NOTE)	TUBE QUANTITY	->	->	->
	NOTE: TO OBTAIN THE PROPER TUBES FOR YOUR PARTICULAR MACHINE CONTACT YOUR CARRIER REPRESENTATIVE. YOU MUST PROVIDE MACHINE SERIAL NO.				
256A	CONDENSER TUBE QTY. (COND. CODE 10)	220	->	X	X
256B	CONDENSER TUBE QTY. (COND. CODE 11)	259	->	X	X
256C	CONDENSER TUBE QTY. (COND. CODE 20)	280	->	X	X
256D	CONDENSER TUBE QTY. (COND. CODE 21)	337	->	X	X
256E	COND. TUBE QTY. (COND. CODE 30,40,45)	X	X	218	->
256F	COND. TUBE QTY. (COND. CODE 31,41,46)	X	X	267	->
256G	COND. TUBE QTY. (COND. CODE 32,42,47)	X	X	279	->

PARTS LIST CATALOG

PARTS LIST PAGE: 006

CATALOG NO.: REV,
SUPERSEDES : REV.

NOTE: SEE "CATALOG NOTES" ON LAST PAGE FOR EXPLANATION OF SYMBOLISM.



HERMETIC SCREW LIQUID
CHILLER

23XL

SIZE: 001 004
SERIES: HOWDEN

ITM	PART DESCRIPTION	23XL-----C40.	23XL-----C60.	23XL-----D40.	23XL-----D60.
		HOWDEN	HOWDEN	HOWDEN	HOWDEN
MACHINE ARRANGEMENT & PIPING					
256H	COND. TUBE QTY. (COND. CODE 33,43,48)	X	X	315	->
257A	GASKET,COOLER W/B (FRAME #1)	(2) 10XB15001601	(2) ->	X	X
257C	GASKET,COOLER W/B (FRAME #2)	(2) 10XB25002901	(2) ->	X	X
257E	GASKET,COOLER W/B (CODE 30-48 NIH)	X	X	(2) 10XB45000601	(2) ->
257F	GASKET,COOLER W/B (CODE 30-48 MARINE)	X	X	(2) 10XB45001501	(2) ->
258A	GASKET,COND. W/B (FRAME #1)	(2) 10XB15001601	(2) ->	X	X
258C	GASKET,COND. W/B (FRAME #2)	(2) 10XB25002901	(2) ->	X	X
258E	GASKET,COND. W/B (NIH)	X	X	(2) 09XB45001101	(2) ->
258F	GASKET,COND. W/B (MARINE 1 & 3 PASS)	X	X	(2) 09XB45002401	(2) ->
258G	GSKT,COND. W/B(MARINE 2 PASS BLK END)	X	X	09XB45002401	->
258H	GSKT,COND. W/B(MARINE 2 PASS W/B END)	X	X	09XB45002801	->
259	GASKET,DIV. PLT. (25') HOT GAS BYPASS	19XB680001	->	->	->
260	VALVE,SOLENOID (HGDP)	FF23JS333	->	->	->
261	REBUILD KIT,SOLENOID VALVE	KS-E34	->	->	->
262	VALVE,BALL (1-3/8) (HGDP)	900511	->	->	->
263	RELAY,PILOT (HGDP)	HN61KK324	->	->	->
PUMPDOWN ASSEMBLY					
264A	PUMPDOWN ASY. (208-3-60)	19EA411113	->	->	->
264B	PUMPDOWN ASY. (230-3-60)	19EA421113	->	->	->
264C	PUMPDOWN ASY. (400/460-3-50/60)	19EA431113	->	->	->
264D	PUMPDOWN ASY. (575-3-60)	19EA461113	->	->	->
264E	PUMPDOWN ASY. (575-3-60)	19XB04280604	->	->	->
NOTE: INCLUDES ITEMS 265 - 320.					
265A	COMPRESSOR ASY. (208/230-3-60)	06DM80866C3250	->	->	->
265B	COMPRESSOR ASY. (400/460-3-50/60)	06DM80866C3650	->	->	->
265C	COMPRESSOR ASY. (575-3-60)	06DM80866C3150	->	->	->
NOTE: INCLUDES ITEMS 268 - 288.					
266 N	GASKET SET	6D43172	->	->	->
267 N	VALVE PLATE PACKAGE (1-13/16" BORE)	NO LONGER AVAILABLE	->	->	->
NOTE: INCLUDES ITEMS 267A - 267G.					
267AN	VALVE PLATE ASY. (L.H. BANK)	NO LONGER AVAILABLE	->	->	->
267BN	SUCTION VALVE	(2) 6D451072	(2) ->	(2) ->	(2) ->
267CN	GASKET,VALVE PLATE	6D401073	->	->	->
267DN	GASKET,CYLINDER HEAD	05GA502213	->	->	->
267EN	SPRING,SUCTION VALVE POSITIONING	(2) 6D401021	(2) ->	(2) ->	(2) ->
267FN	DISCHARGE VALVE	(2) 6D751062	(2) ->	(2) ->	(2) ->
267GN	DISCHARGE VALVE STOP	(2) 6D751072	(2) ->	(2) ->	(2) ->
268 N	VALVE PLATE PACKAGE (2" BORE)	06DA660120	->	->	->
NOTE: INCLUDES ITEMS 268A - 268J.					
268AN	VALVE PLATE ASY.	06DA404674	->	->	->
268BN	GASKET,VALVE PLATE	05DA500153	->	->	->
268CN	GASKET,CYLINDER HEAD (PLAIN)	05GA502213	->	->	->
268DN	GASKET,CYLINDER HEAD (S.C.O.U.)	05GA502223	->	->	->
268EN	SUCTION VALVE	(2) 06DA502903	(2) ->	(2) ->	(2) ->
268FN	SPRING,SUCTION VALVE POSITIONING	(2) 6D401021	(2) ->	(2) ->	(2) ->
268GN	GASKET,CYLINDER HEAD (CENTER BANK)	05GA502173	->	->	->
268HN	GASKET,VALVE PLATE (LESS I PORT)	06DA502923	->	->	->
268JN	DOWEL PIN	7J16032	->	->	->
283 N	PISTON & PIN PACKAGE	(2) 6D68962	(2) ->	(2) ->	(2) ->
284 N	ECCENTRIC STRAP	(2) 5D401372	(2) ->	(2) ->	(2) ->
285 N	COMPRESSION RING	(2) AU50CP355	(2) ->	(2) ->	(2) ->
287 N	BEARING HEAD ASY.	06DA660060	->	->	->
288 N	OIL FILTER ASY. (SCREEN)	6D40103	->	->	->

PARTS LIST CATALOG

PARTS LIST PAGE: 007

CATALOG NO. : REV.
SUPERSEDES : REV.

NOTE: SEE "CATALOG NOTES" ON LAST PAGE FOR EXPLANATION OF SYMBOLISM.



HERMETIC SCREW LIQUID
CHILLER

23XL

SIZE: 001 004
SERIES: HOWDEN

ITM	PART DESCRIPTION	23XL-----C40.	23XL-----C60.	23XL-----D40.	23XL-----D60.
		HOWDEN	HOWDEN	HOWDEN	HOWDEN
PUMPDOWN ASSEMBLY					
289	SERVICE VALVE PACKAGE (SUCTION) NOTE: INCLUDES ITEMS 290 - 293.	5F20660002	->	->	->
290	VALVE (5/8" ODS)	NOT SOLD SEPARATELY	->	->	->
291	GASKET,SUCTION VALVE	6D231421	->	->	->
292	BOLT,HEX. HEAD	NOT SOLD SEPARATELY	->	->	->
293	BUSHING (5/8" X 1/2")	NOT SOLD SEPARATELY	->	->	->
294	SERVICE VALVE PACKAGE (DISCHARGE) NOTE: INCLUDES ITEMS 295 - 297.	06DA660060	->	->	->
295	VALVE. (5/8" ODS)	NOT SOLD SEPARATELY	->	->	->
296	GASKET,DISCHARGE VALVE	6D231421	->	->	->
297	BOLT,HEX. HEAD	NOT SOLD SEPARATELY	->	->	->
298	CONDENSER ASSEMBLY NOTE: INCLUDES ITEMS 299 - 300.	19EA41531	->	->	->
299	TRY COCK ASSEMBLY	7F0132	->	->	->
300	VALVE,LIQUID	EP12BH211	->	->	->
301	COMPR.OVERLOAD(39A)(FURNAS-MAN.RESET	HM68JX003	->	->	->
302A	OVERLOAD HEATER (200V)	(3) HN71JC050	(3) ->	(3) ->	(3) ->
302B	OVERLOAD HEATER (230V)	(3) HN71JC049	(3) ->	(3) ->	(3) ->
302C	OVERLOAD HEATER (460V)	(3) HN71JC036	(3) ->	(3) ->	(3) ->
302D	OVERLOAD HEATER (575V)	(3) HN71JC031	(3) ->	(3) ->	(3) ->
303	CONTROL BOX COVER	07DA500002	->	->	->
304	CONTROL BOX ASSEMBLY NOTE: INCLUDES ITEMS 305 - 311.	19EA41588	->	->	->
305	TERMINAL BLOCK	HY84EG017	->	->	->
306	CONTACTOR	HM53CD115	->	->	->
307	SWITCH,PRESSURE	HK01UA181	->	->	->
308	SWITCH,TOGGLE	HR53ZA035	->	->	->
309	FUSE HOLDER	HKP-HH	->	->	->
310	FUSE (3 AMP)	AGC3	->	->	->
311	GROMMET	KA56XM040	->	->	->
312	SAFETY HEAD	FR51LR385	->	->	->
313	OIL SEPERATOR	KH31LZ008	->	->	->
314	GASKET,OIL SEPERATOR	KY31LY003LA	->	->	->
315	VALVE,DIAPHRAM (1/2")	(4) A-14841	(4) ->	(4) ->	(4) ->
316	VALVE,ANGLE	EP23LA211	->	->	->
317	GASKET,CAPSCREW (5/16")	(4) AU51YA003	(4) ->	(4) ->	(4) ->
318	GASKET,FLARE (1/2")	DD24FA151	->	->	->
319	SPRING,COMPRESSOR MOUNTING	(4) 50K21231	(4) ->	(4) ->	(4) ->
320	SPRING CUP,COMPRESSOR MOUNTING	(4) 50K41221	(4) ->	(4) ->	(4) ->
MISCELLANEOUS GROUP					
321 N	PAINT,AMER. STERLING GREY (SPRAY CAN)	PH23GH022	->	->	->
322 N	PAINT,AMER. STERLING GREY (GALLON CA	PH23GH022G	->	->	->
323 N	BRUSH,TUBE CLEANING (3/4" I.D.)	KC21AH105	->	->	->
324 N	OIL,COMPRESSOR (5 GALLON) NOTE: USED WITH BOTH R-22 & R-134A REFRIGERANTS.	PP23RZ104005	->	->	->
325 N	FIBER GASKET SEALANT	19XL680002	->	->	->
326 N	INSULATION,SHEET	QR0948486434	->	->	->
327 N	TEMP. SENSOR PACKAGE (SPARE SENSORS)	HH79WZ024	->	->	->
328 N	TUBING, HEAT SHRINK	LF33MM112	->	->	->
329 N	PRESS. DIFFERENTIAL FLOW SWITCH	(2) HK06ZC033	(2) ->	(2) ->	(2) ->
330	BACK PRESSURE VALVE	23XL24005301	->	->	->
331	O-RING,BACK PRESSURE VALVE	KK71EW034	->	->	->
332	TOOL,SLIDE VALVE LOCKNUT SOCKET	T-144502D	->	->	->
333	SERVICE KITS	REFER TO KITTING	->	->	->

PARTS LIST CATALOG

PARTS LIST PAGE: 008

CATALOG NO. : REV.
SUPERSEDES : REV.

NOTE: SEE "CATALOG NOTES" ON LAST PAGE FOR EXPLANATION OF SYMBOLISM.

