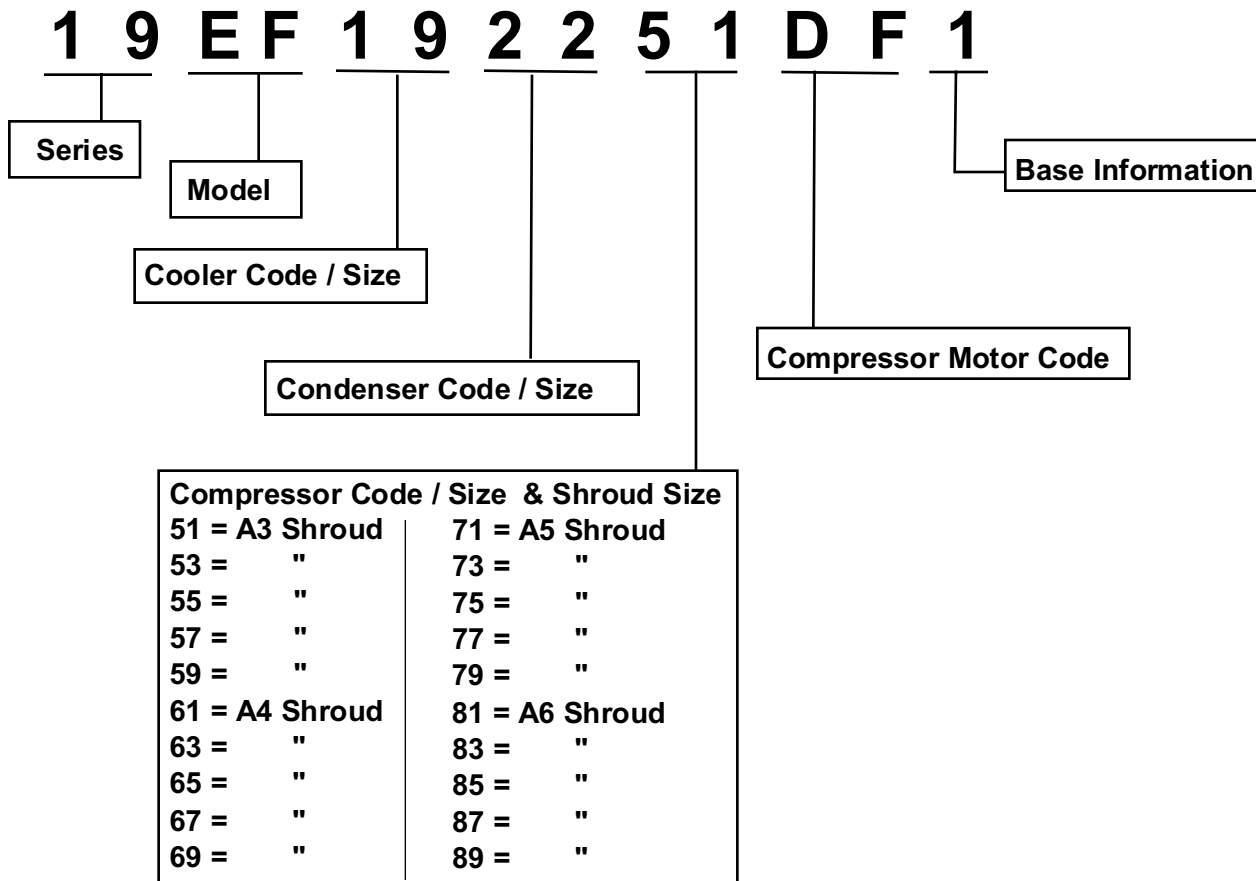


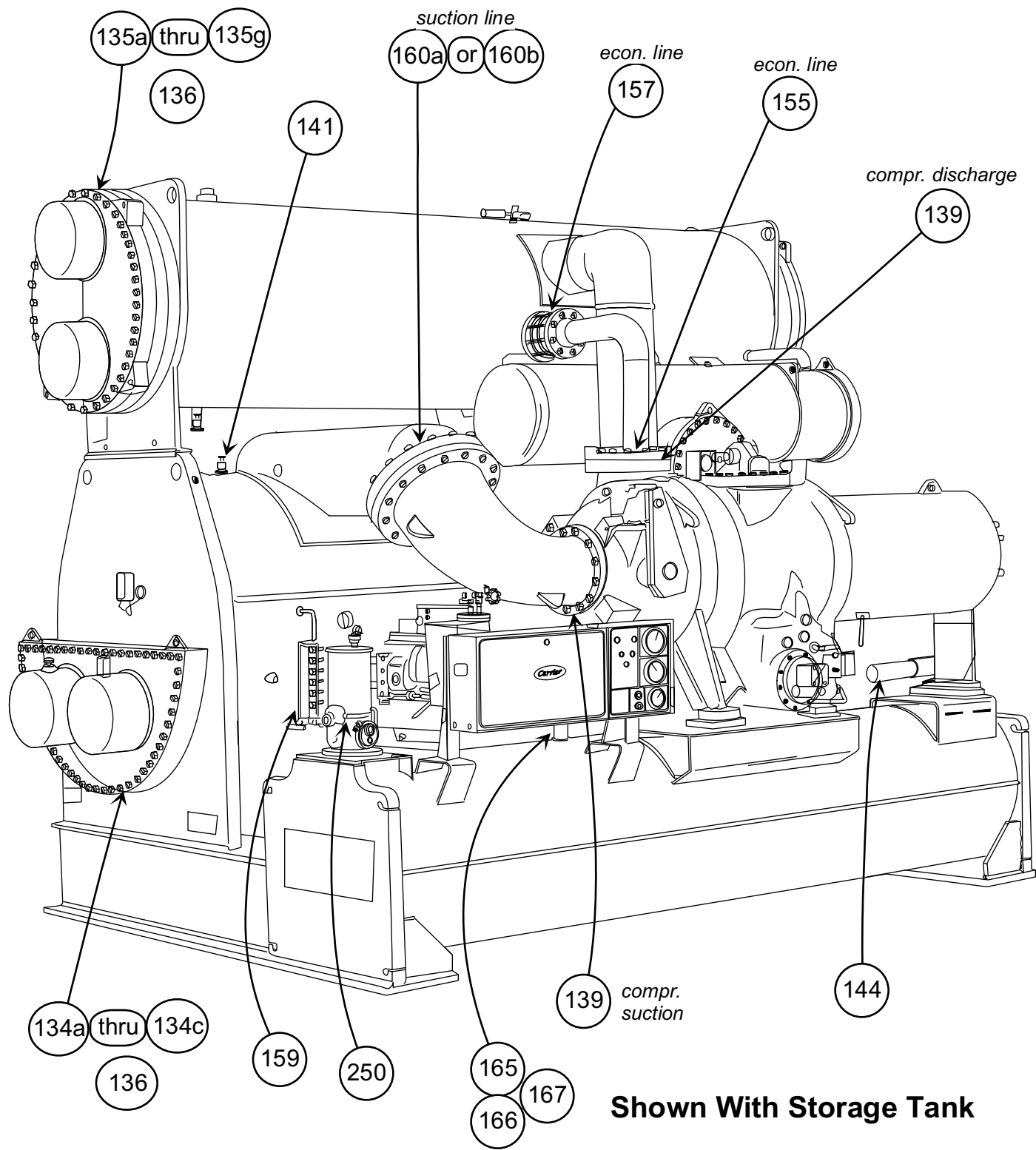
Model Number Significance Chart

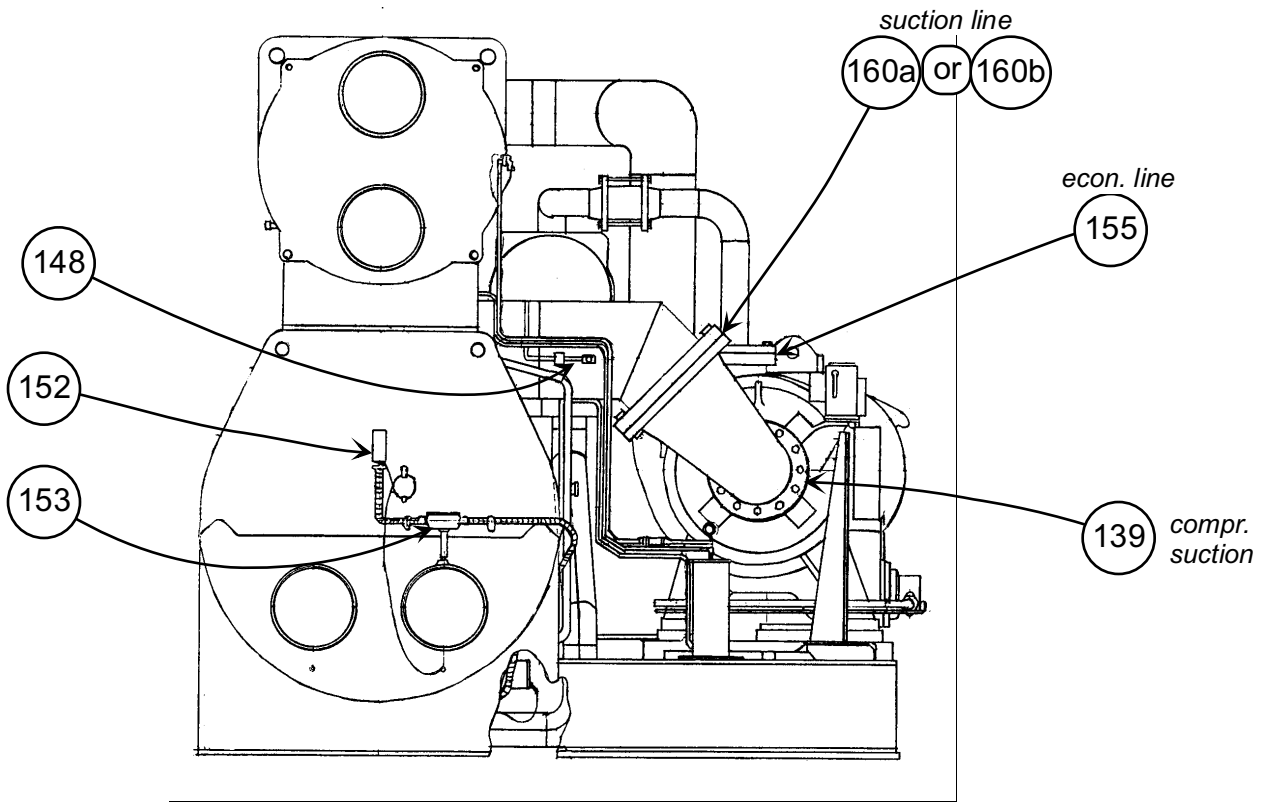
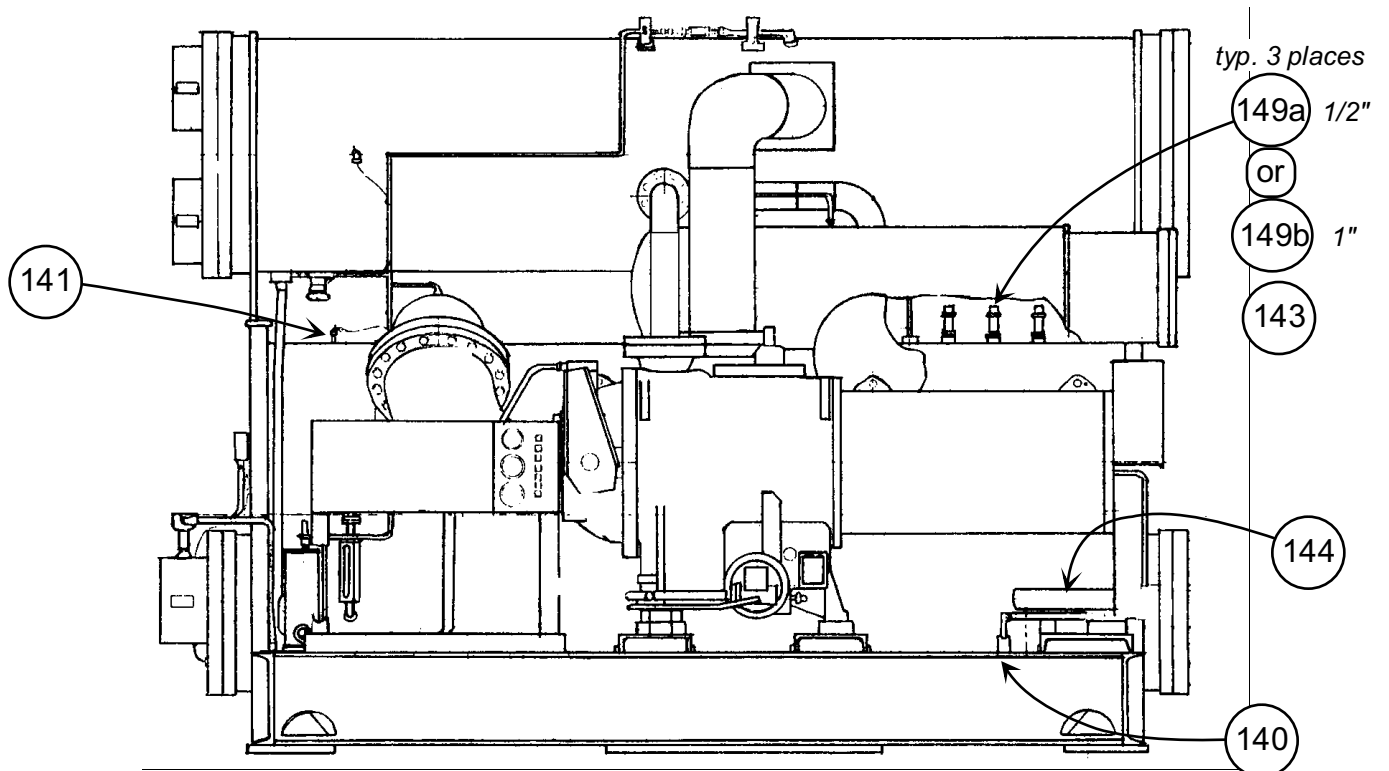


How To Use This Catalog

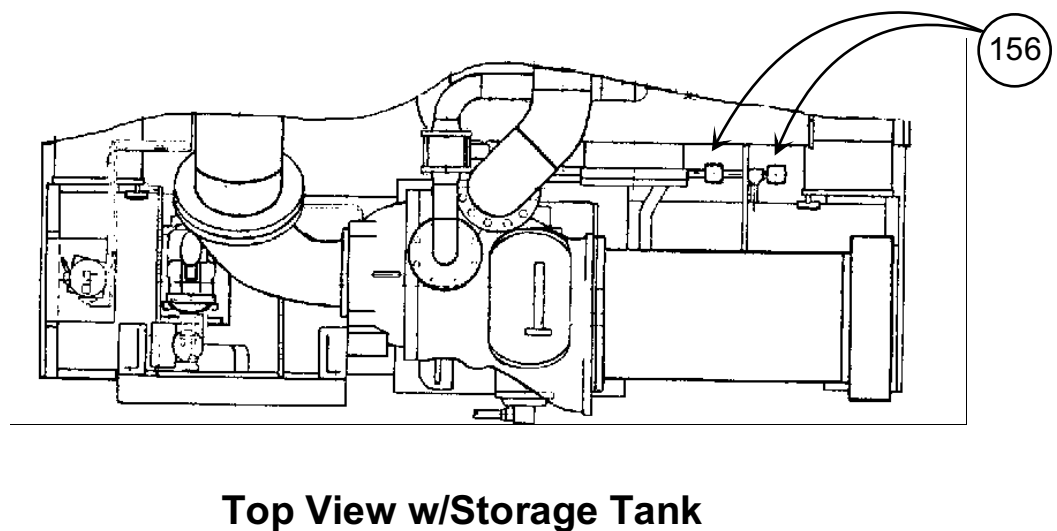
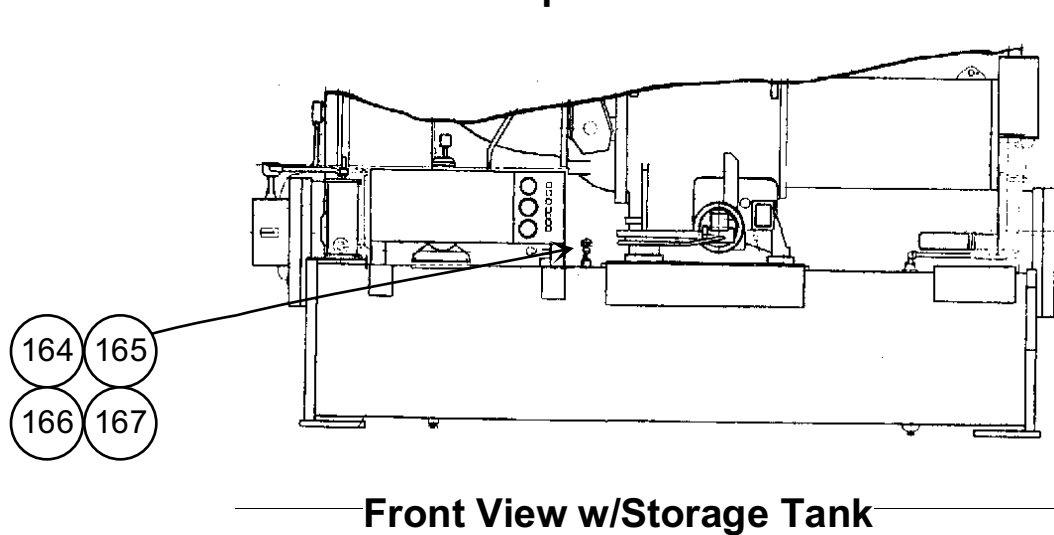
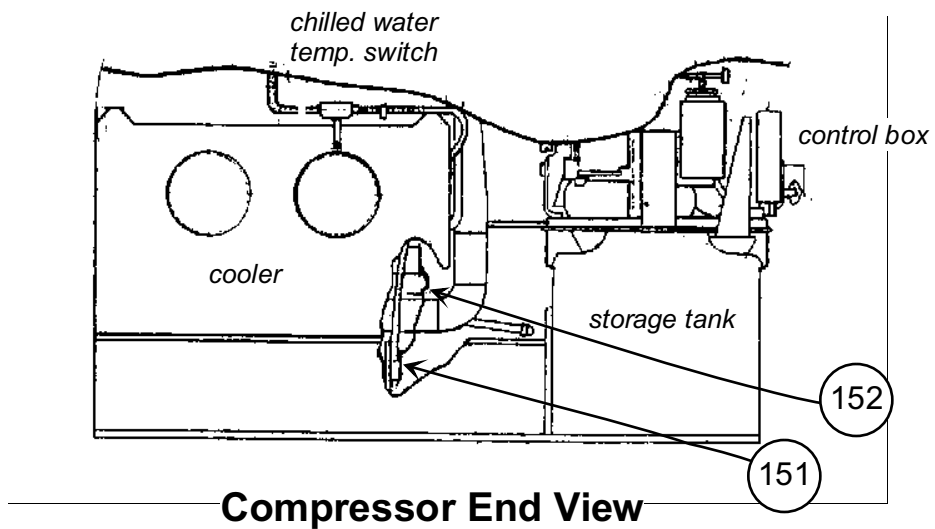
1. This Catalog Presents The Most Commonly Used Specified Replacement Parts For The Standard 19EF Centrifugal Refrigeration Machine And Is Not Applicable To Any Special Order Machines. (Contact Carrier With Machine Serial Number For Any Special Order Machine Parts.)
2. Occasionally, Due To Limitations Of Illustrations Used, A Part May Not Be Illustrated. These Parts Are Identified by "N" In The Column Next To The Item Number.
3. The Following Parts Are Not Listed In This Catalog:
 - A. Impellers, Shrouds, Diffusers
 - B. Compressor Motor (Rotor & Stator)
 - C. Evaporator Tube Part Number
 - D. Condenser Tube Part Number

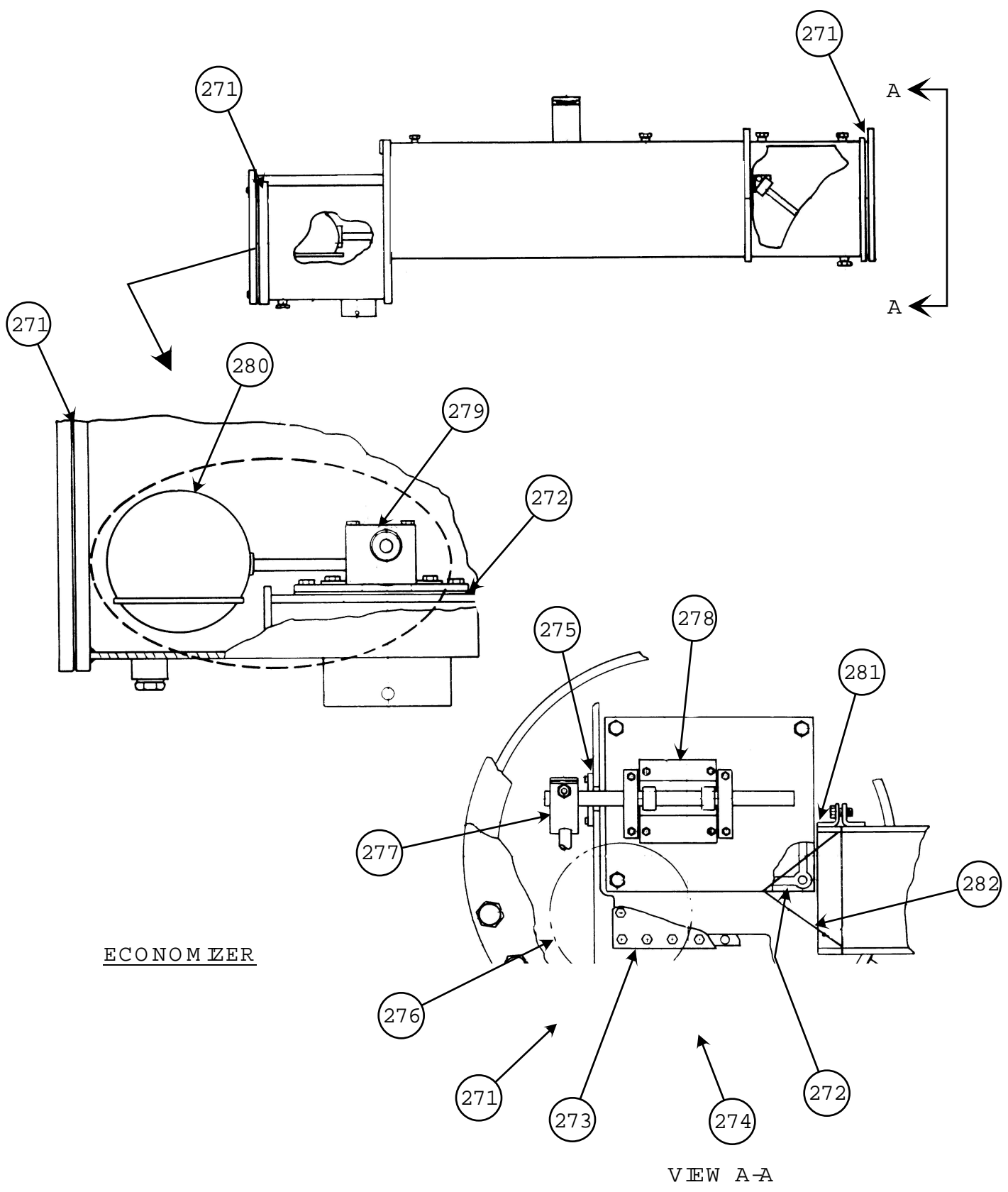
If Any Of These Parts Are Required, Contact Your RCD Customer Service Representative With The Model Number And Serial Number Of Your Machine.
4. Positive Identification Of Your Machine To Properly Select Parts May Be Done By Referring To Machine Name Plate.

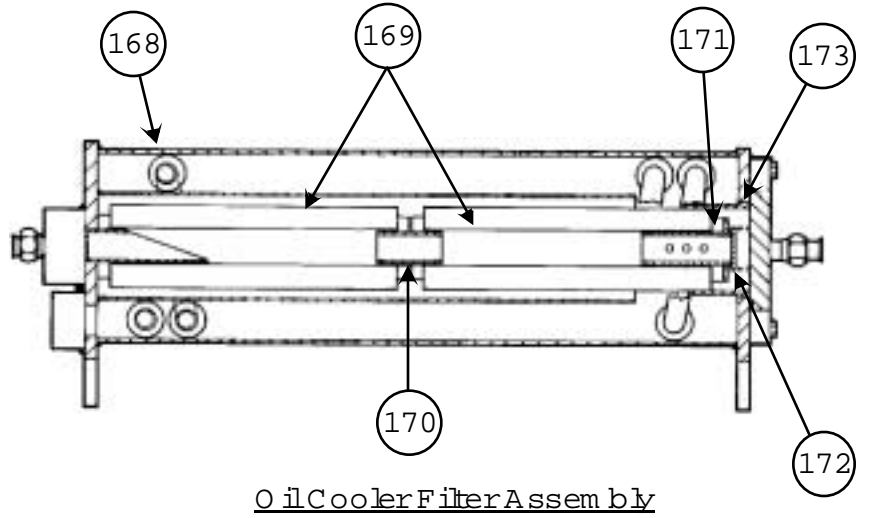
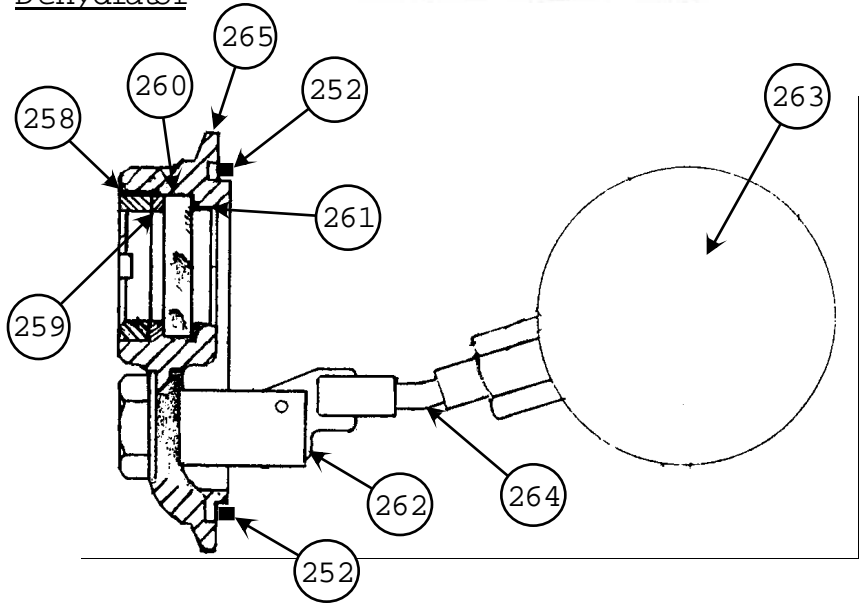
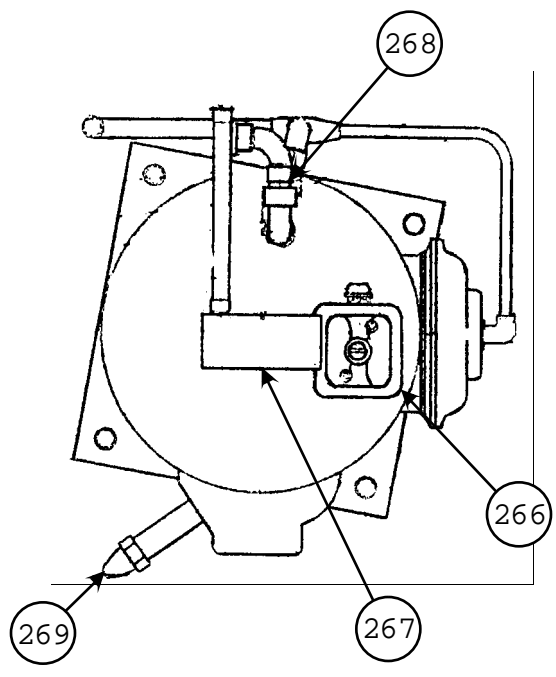
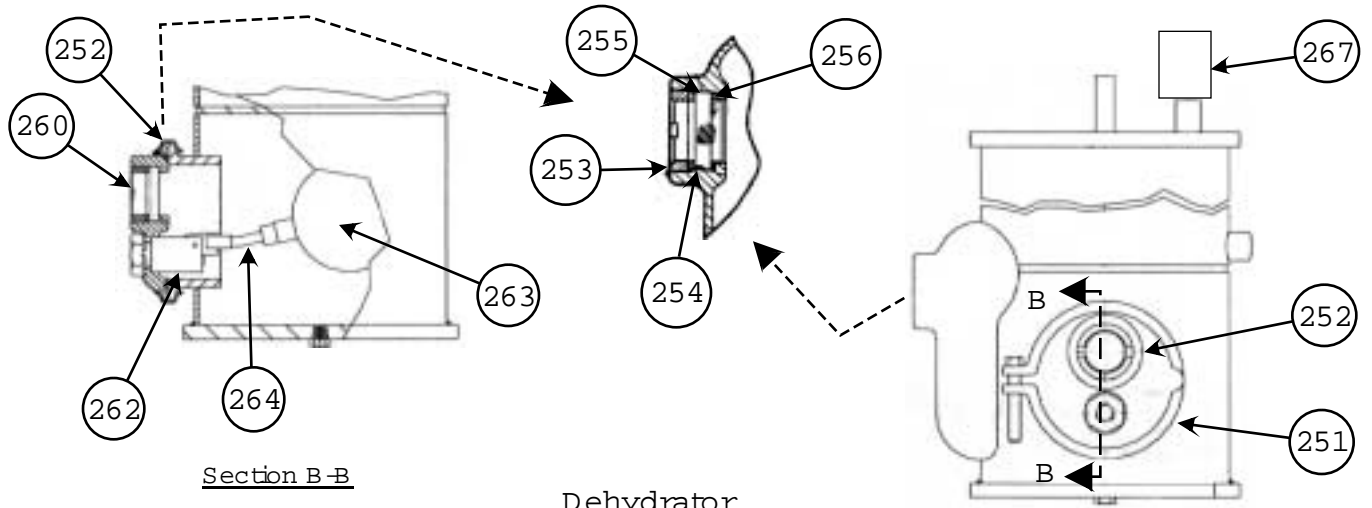


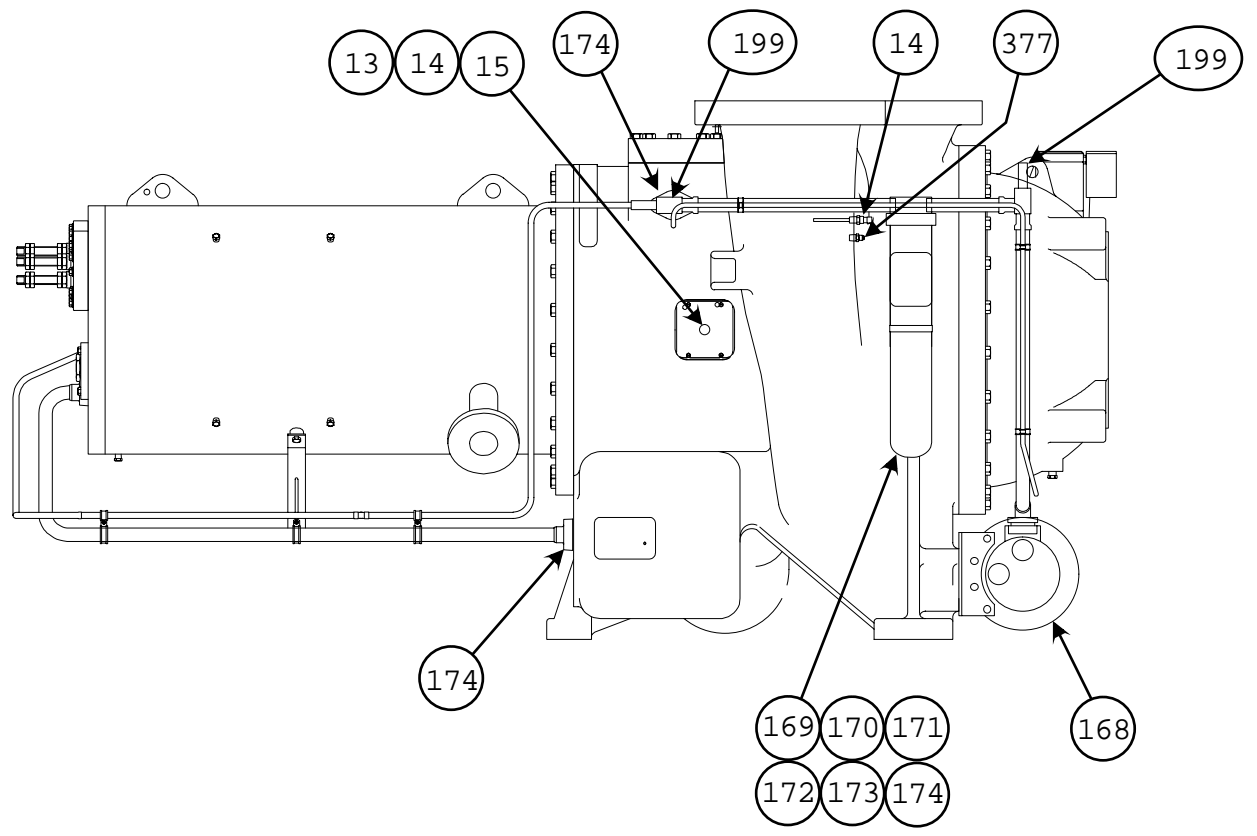
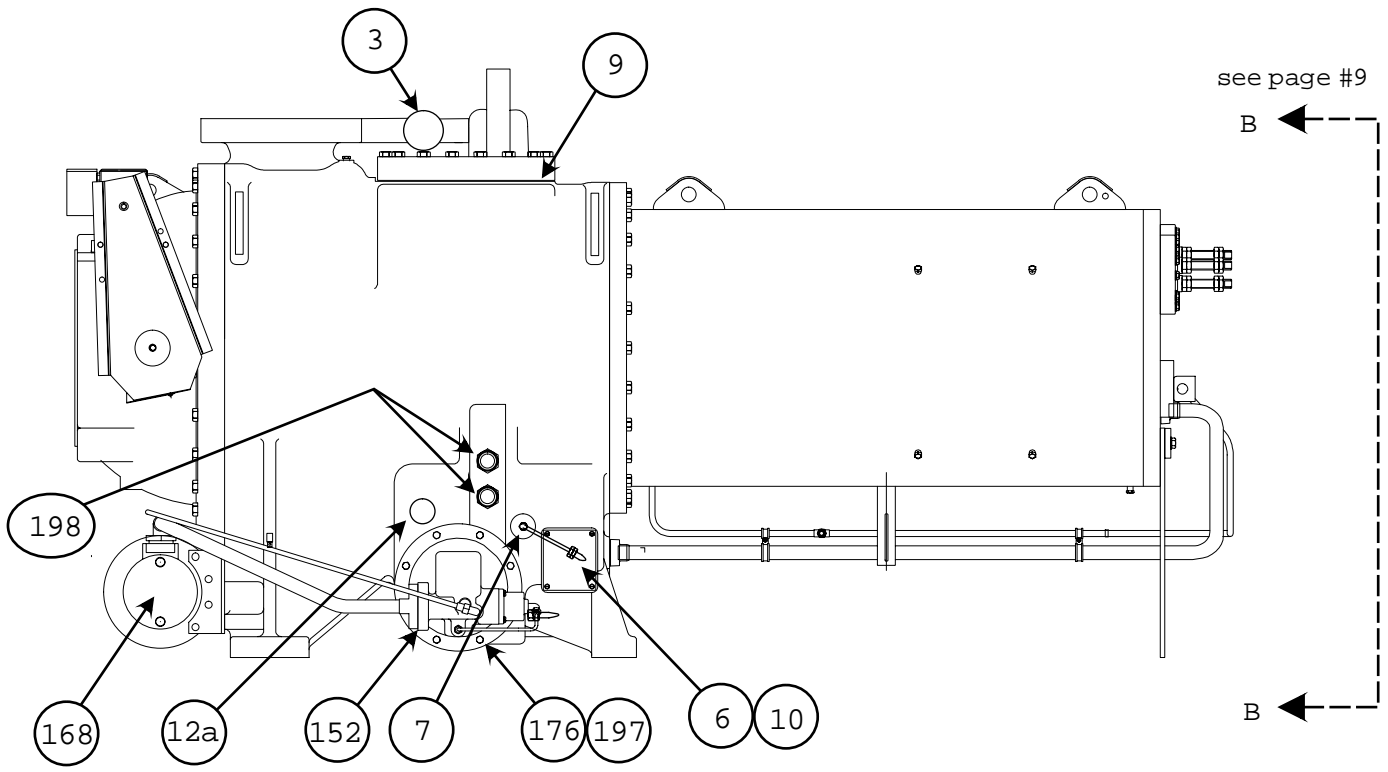


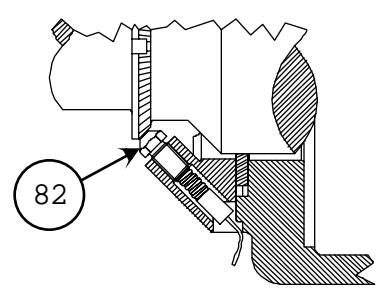
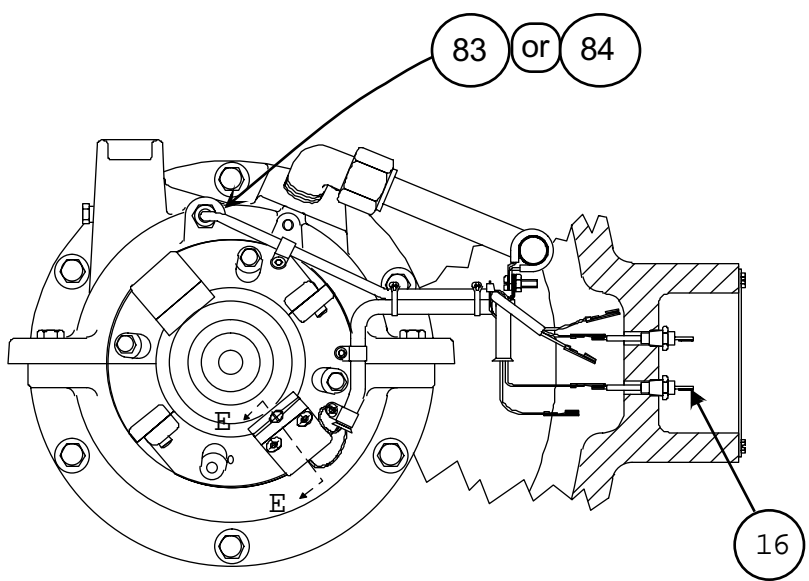
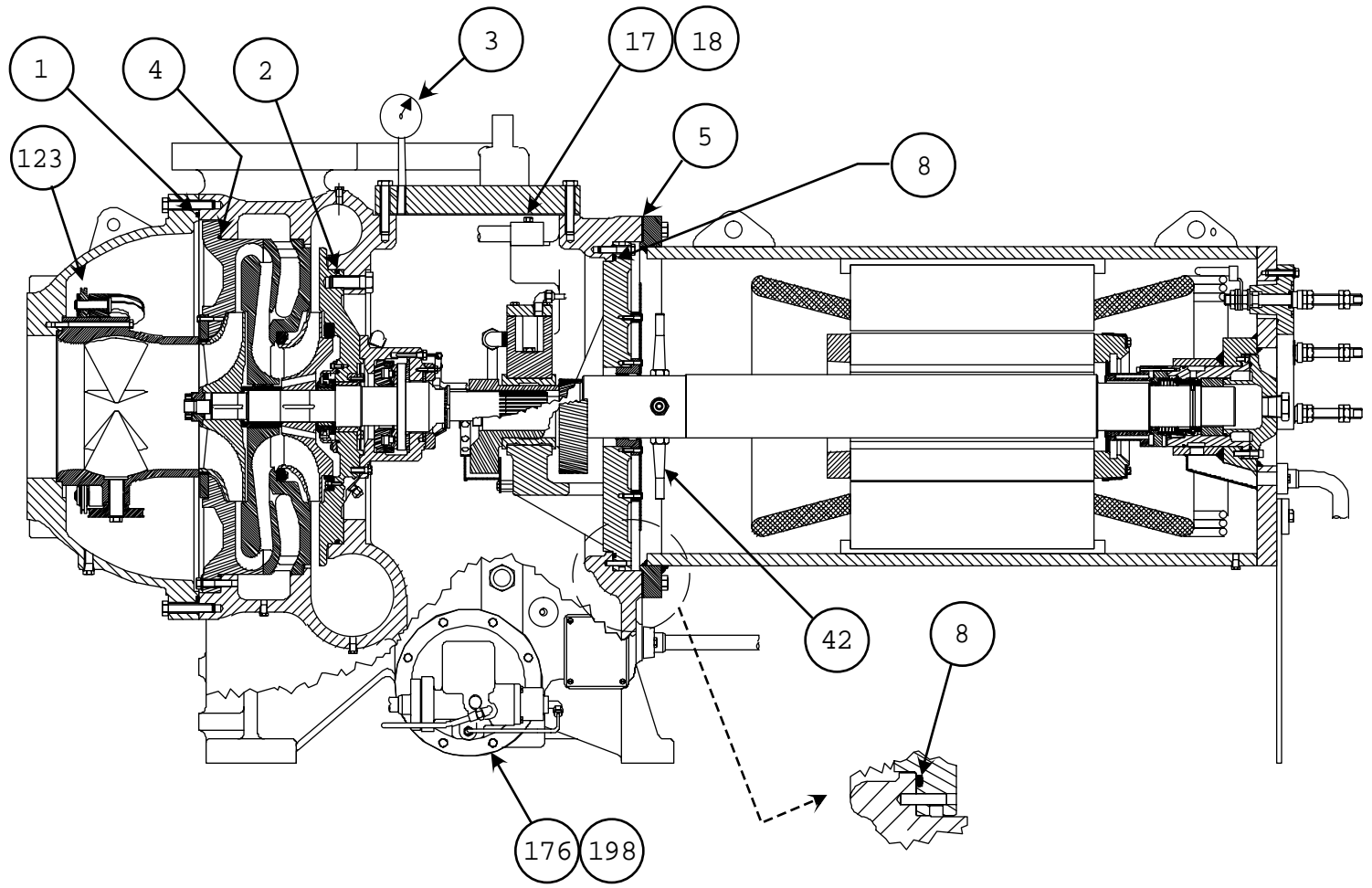
Shown W/out Storage Tank



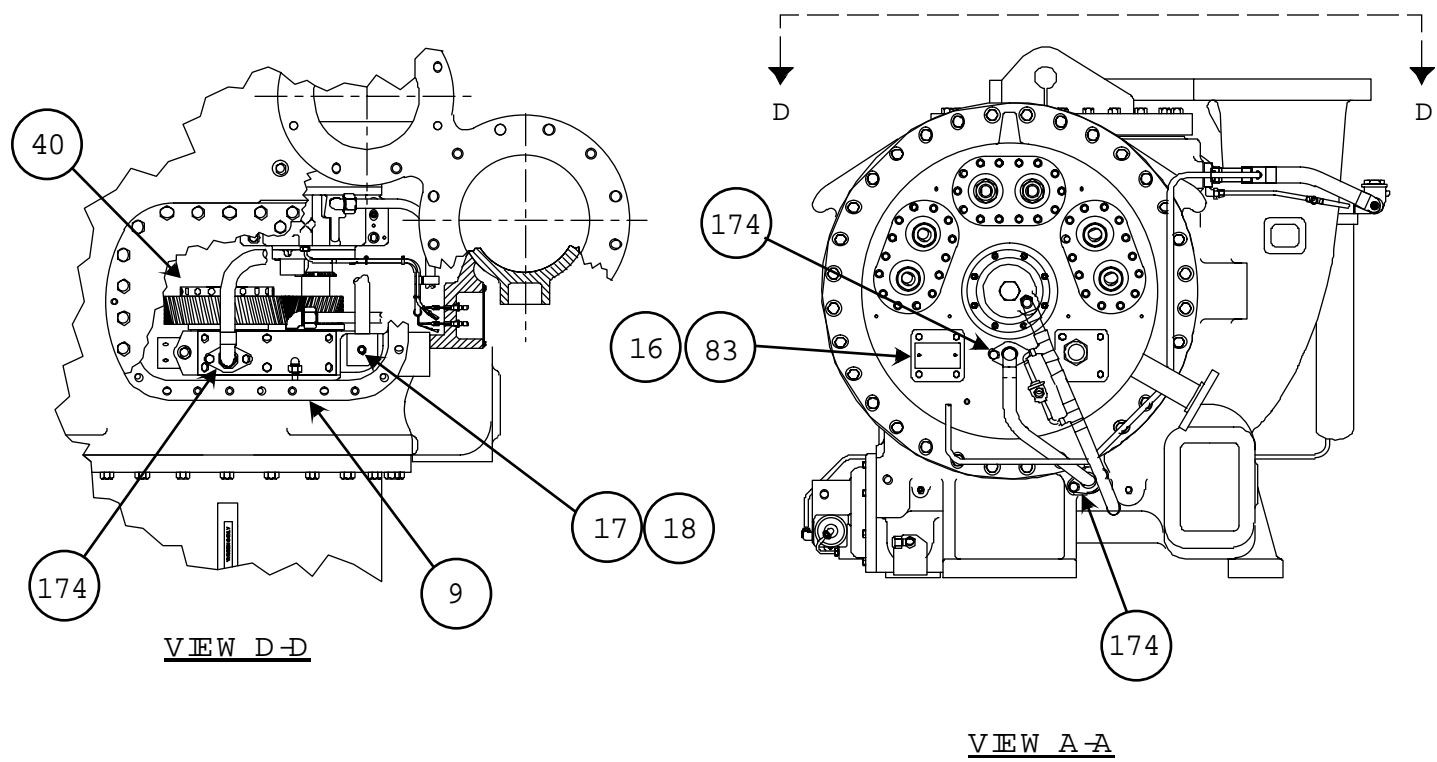


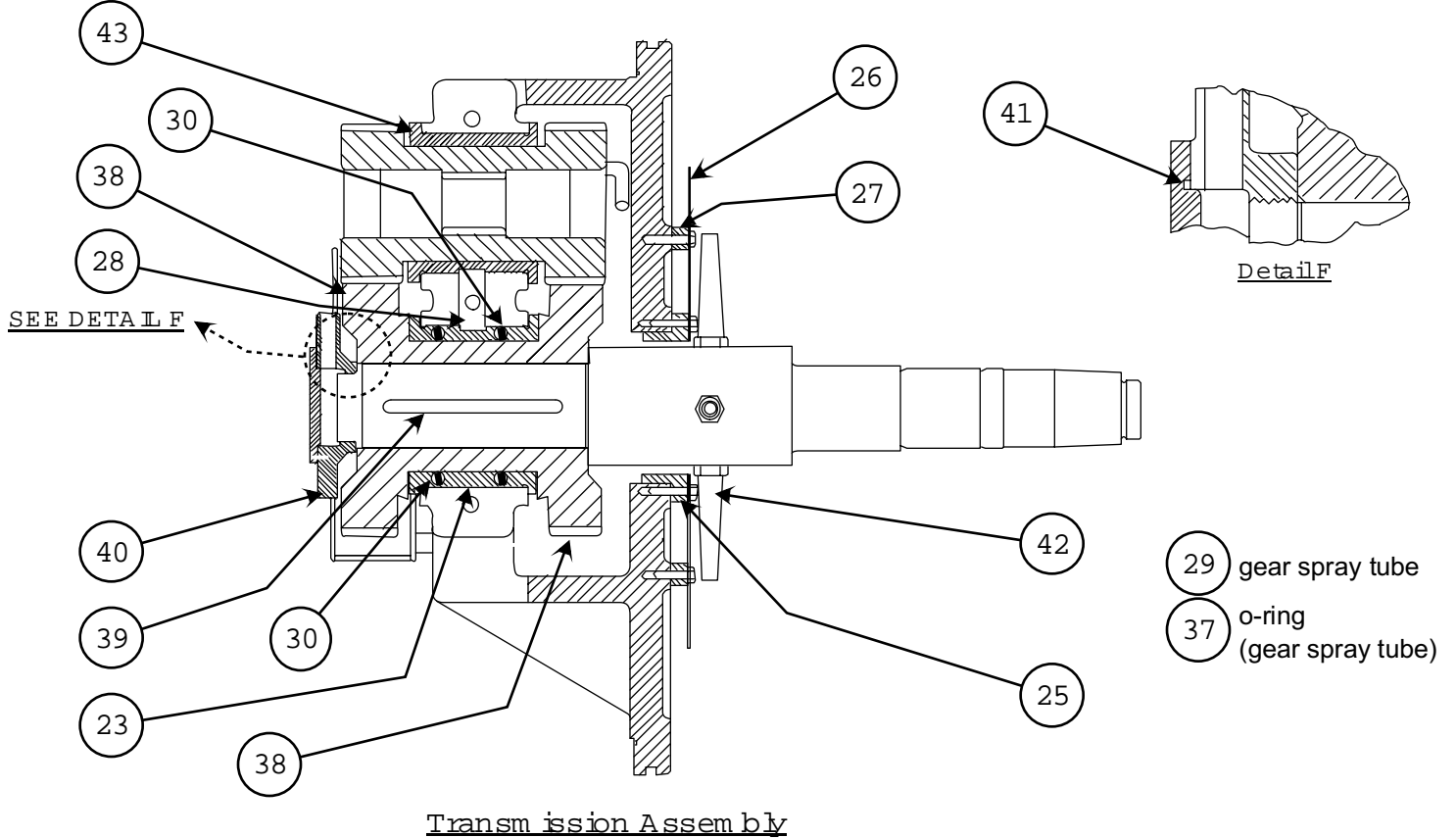
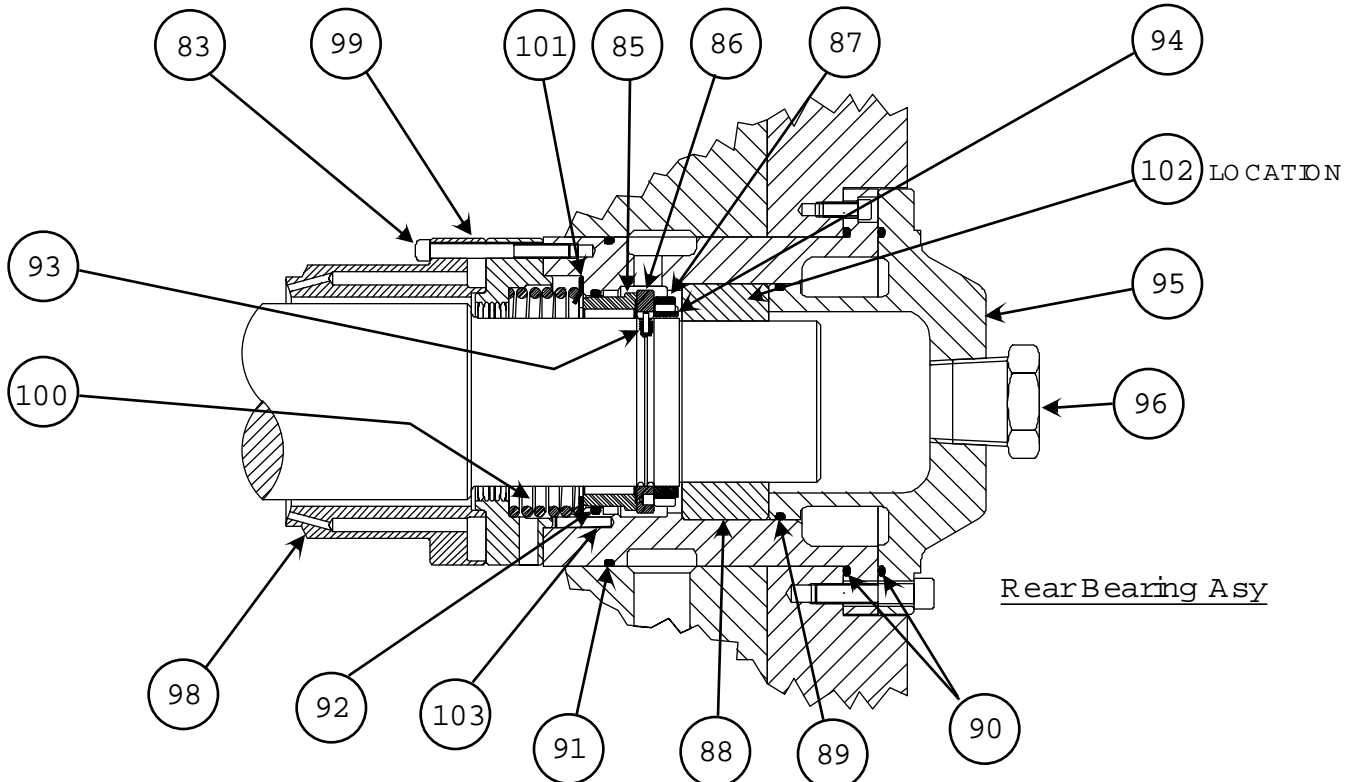


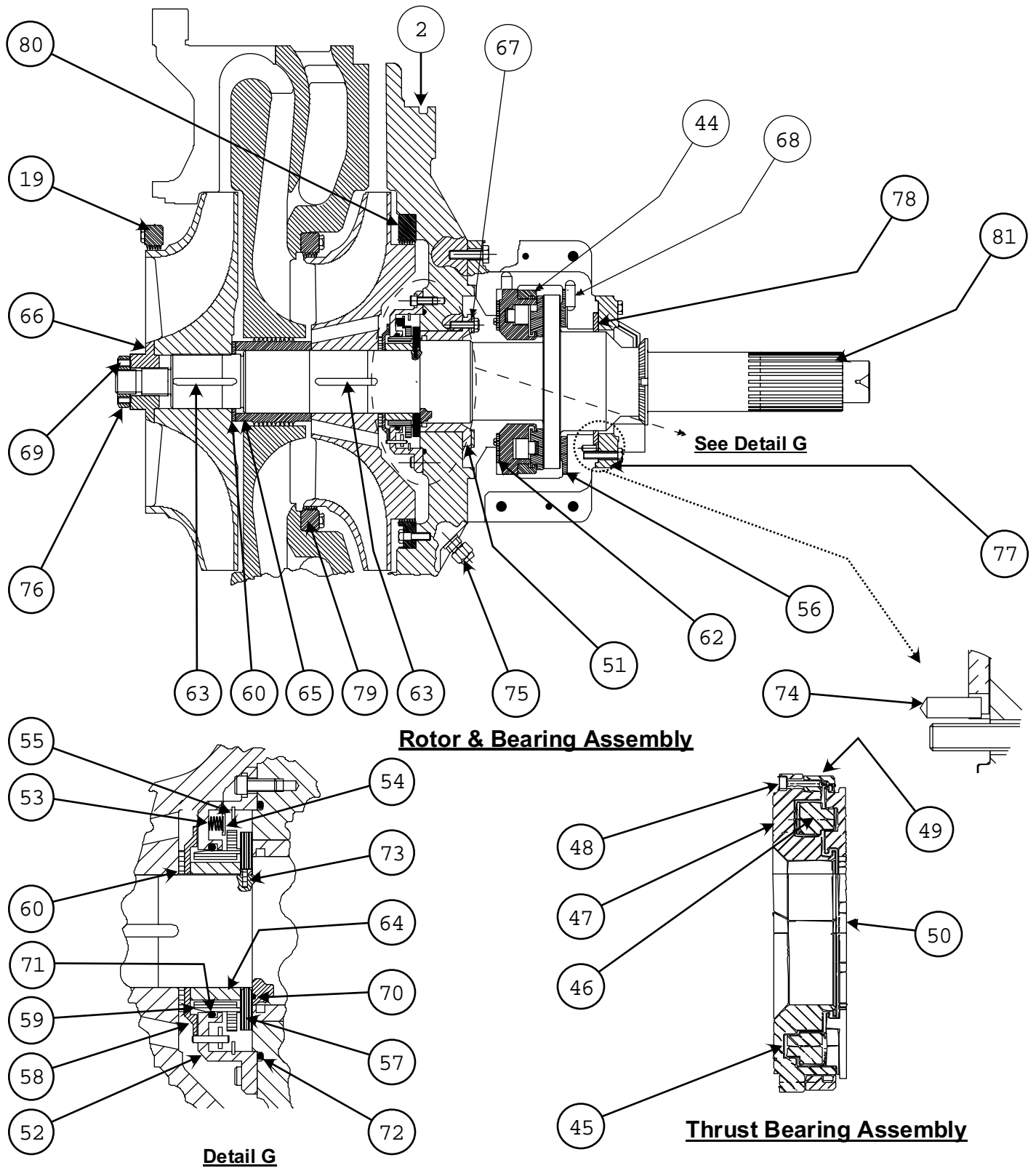


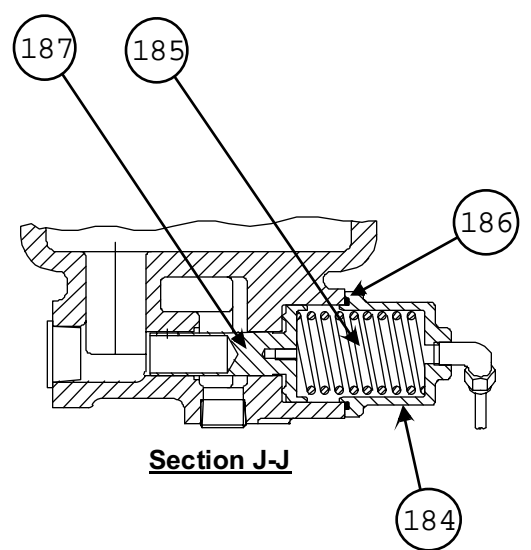
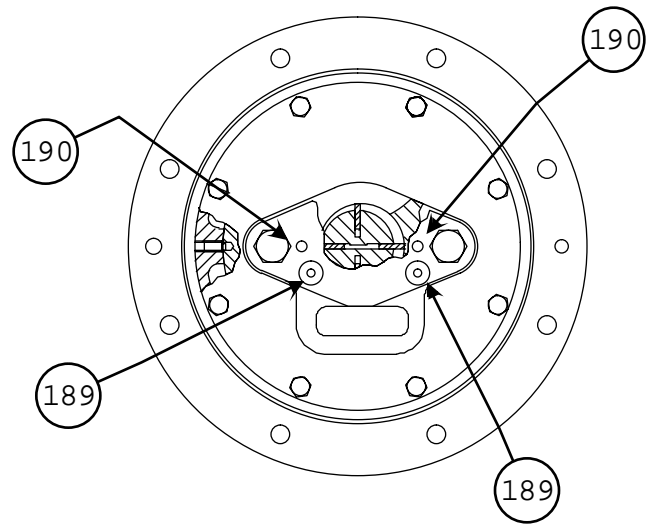
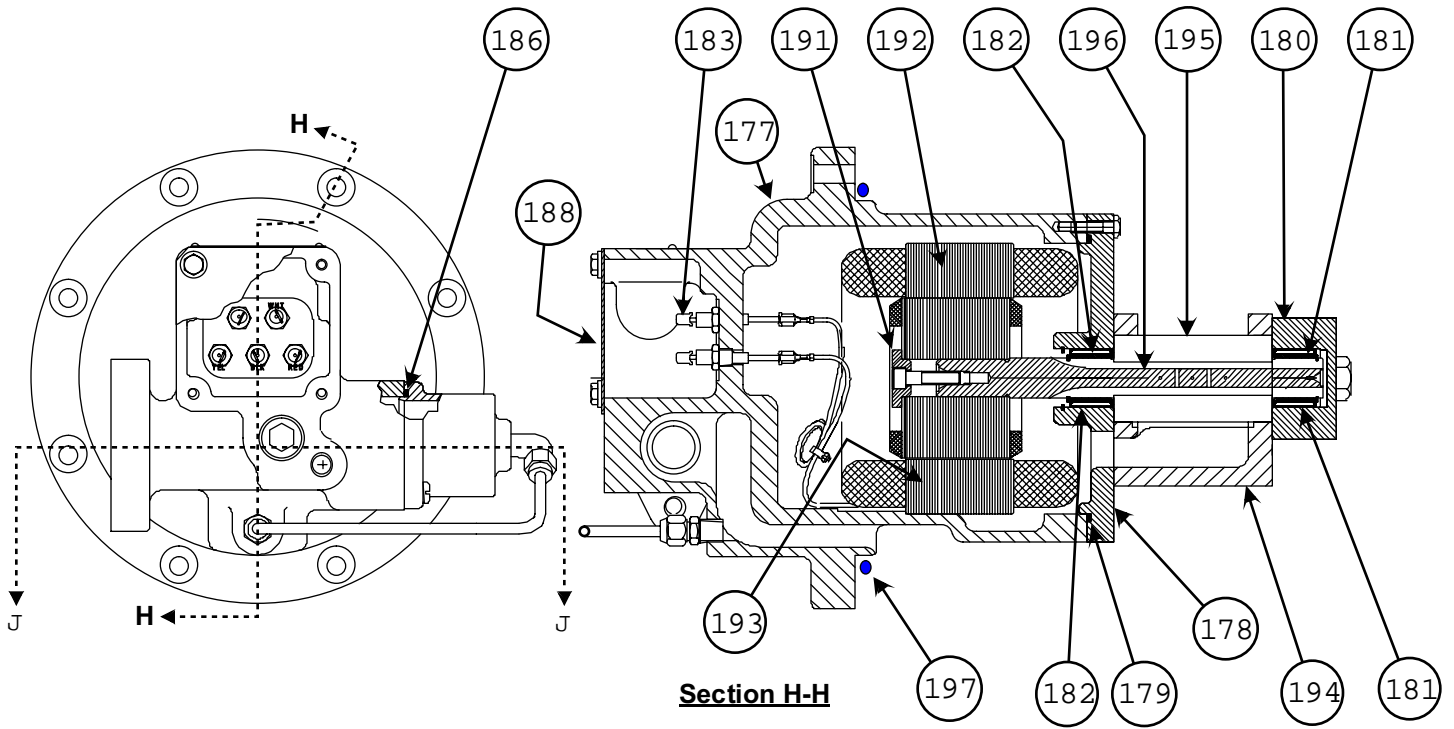


SECTION E-E
SHAFT DISPLACEMENT
DETECTOR

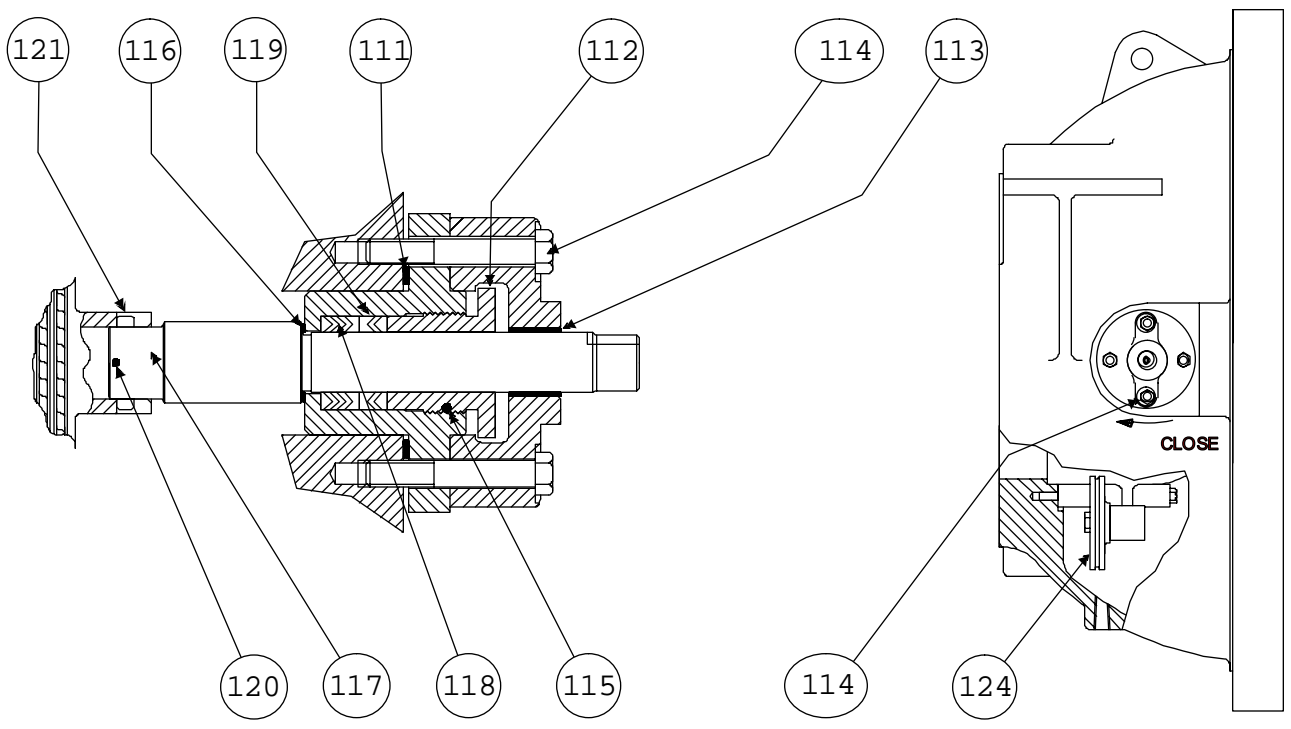
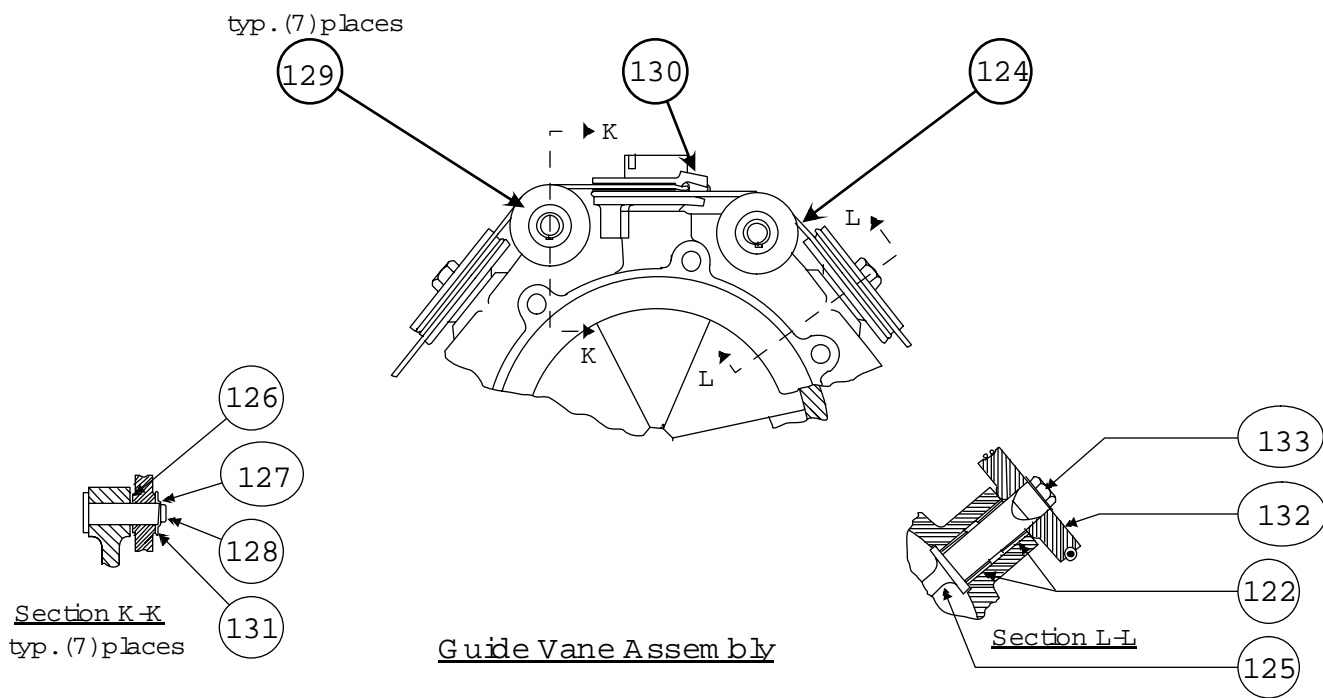




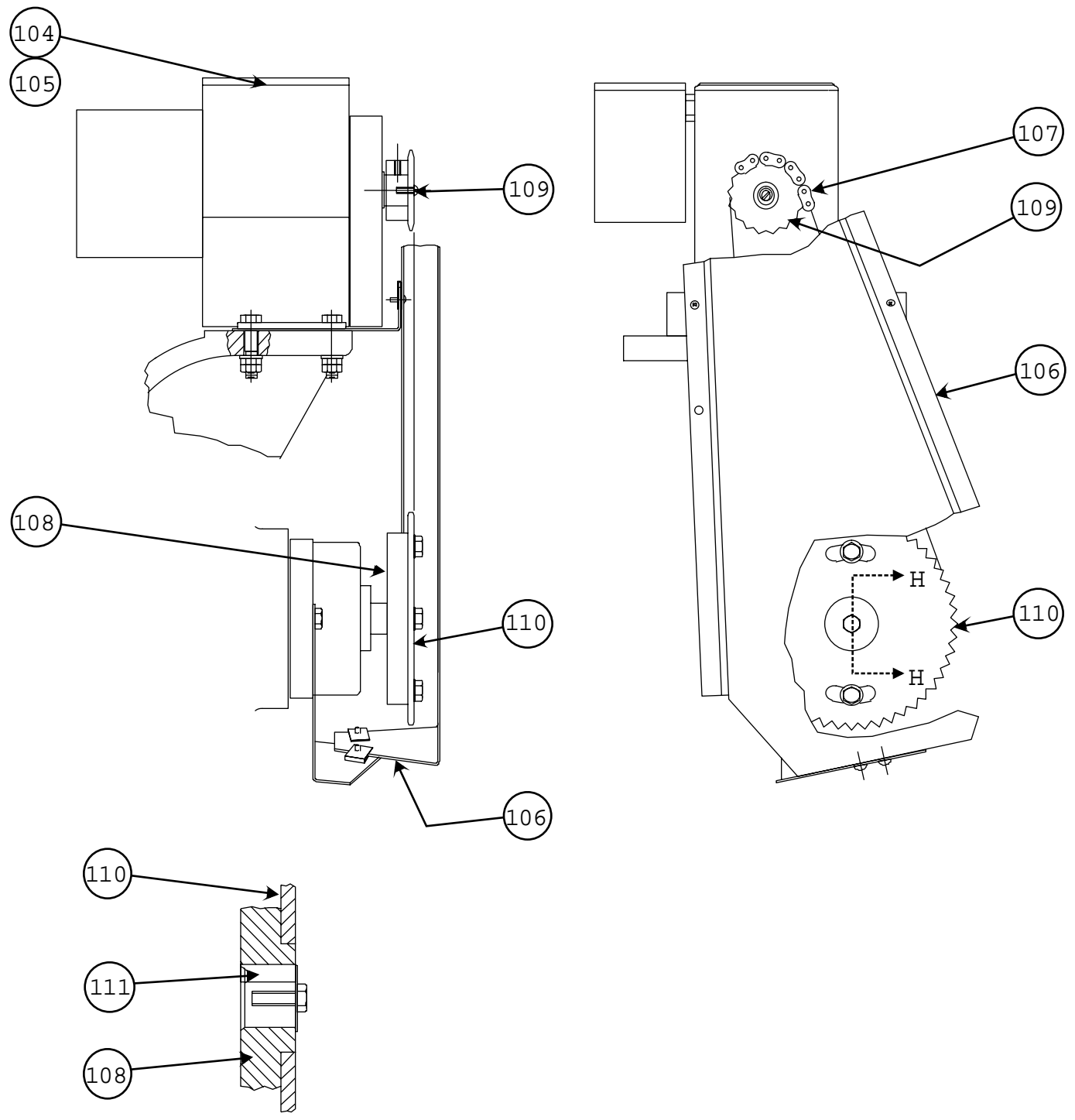




Oil Pump And Motor Assembly

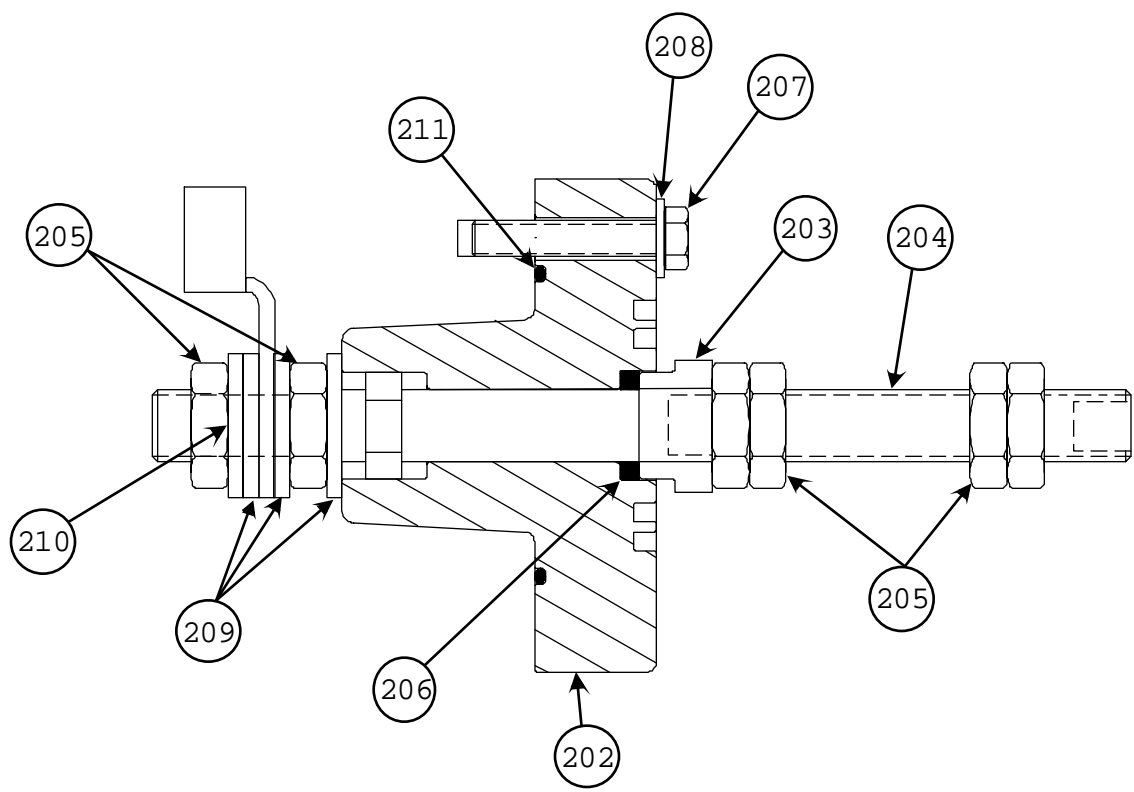


Guide Vane Shaft & Seal Assembly

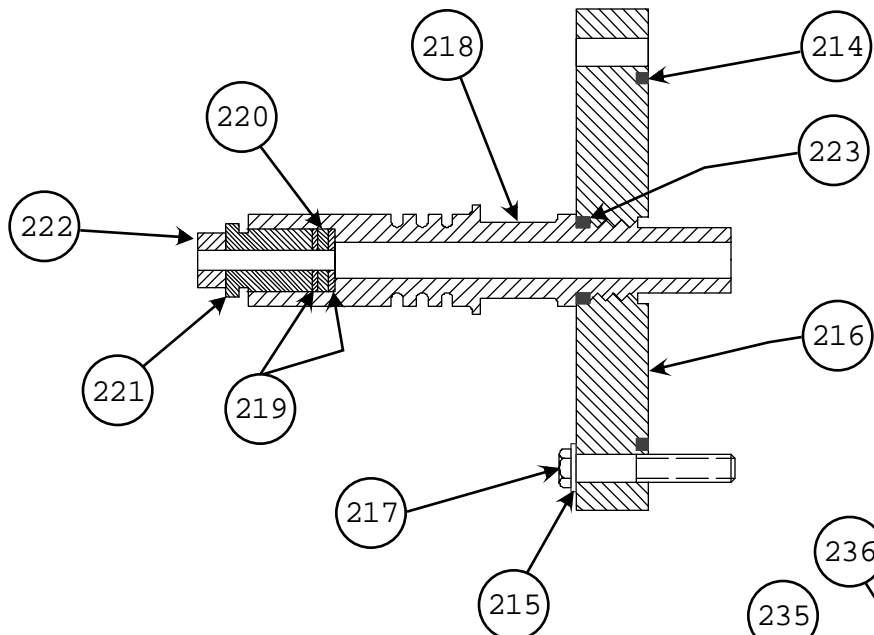


Section H-H

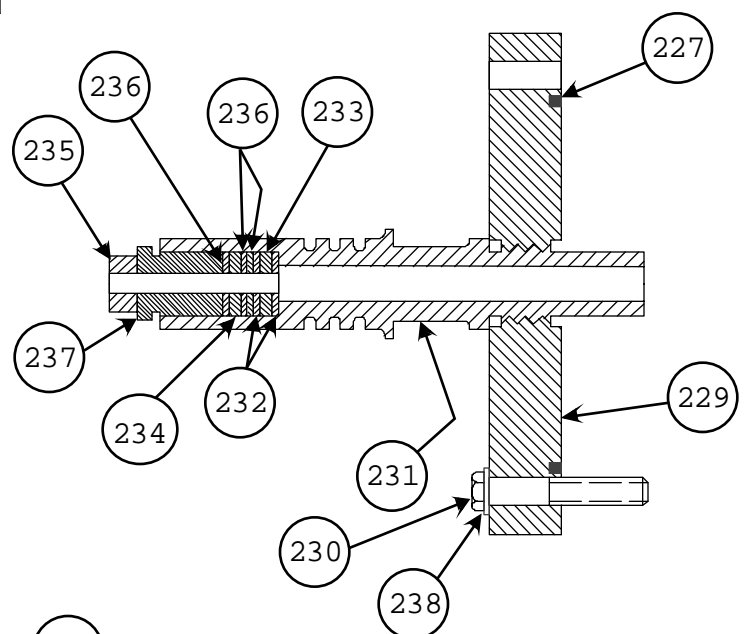
Guide Vane Drive Assembly



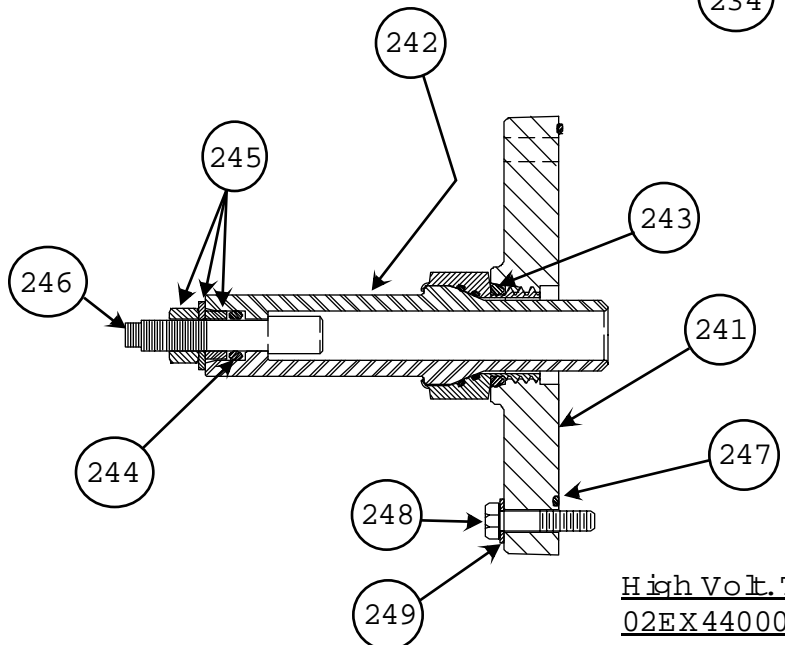
Low Voltage Terminal



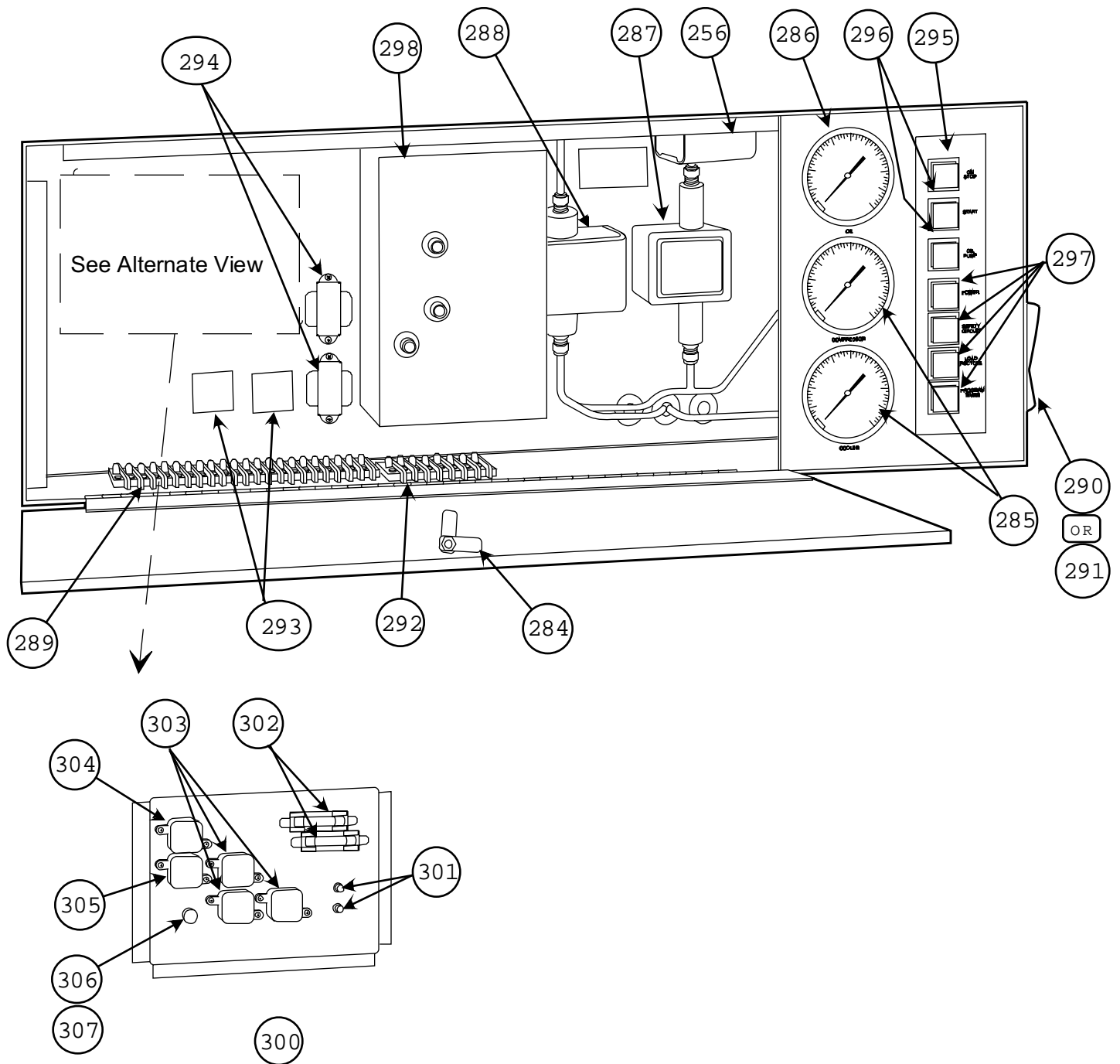
High Volt. Term .
19EF402173



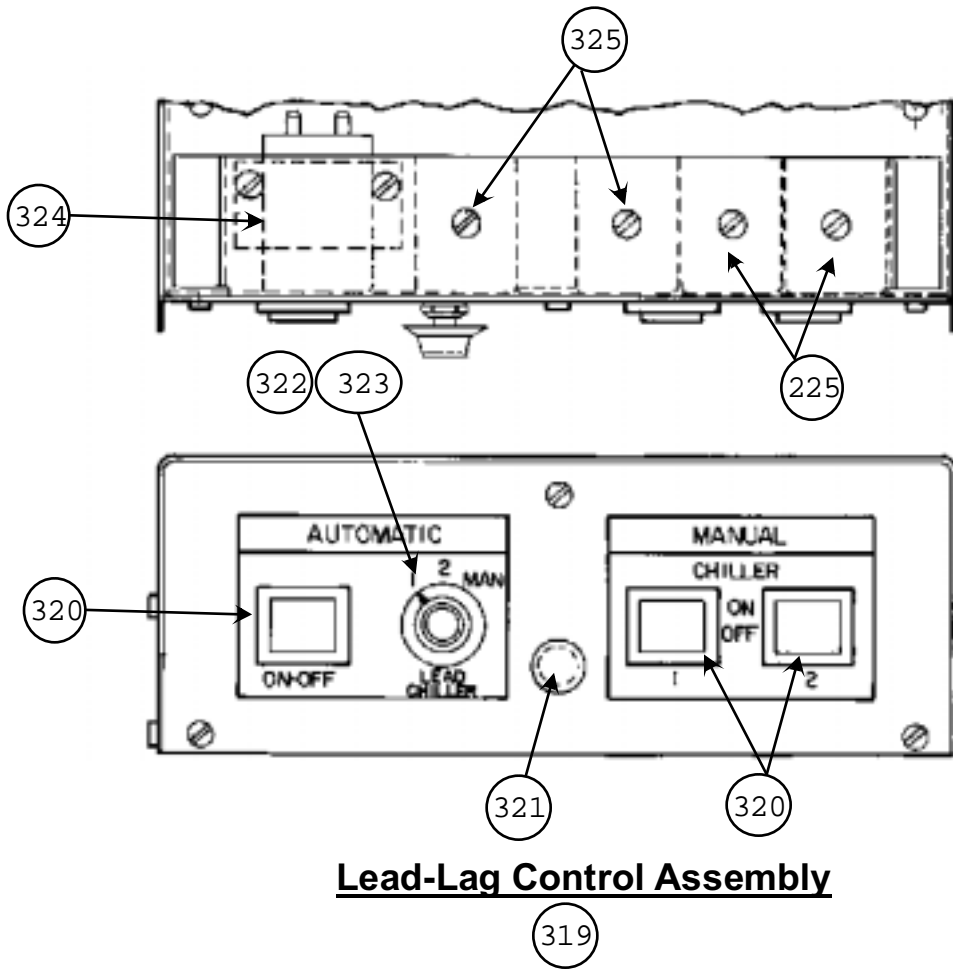
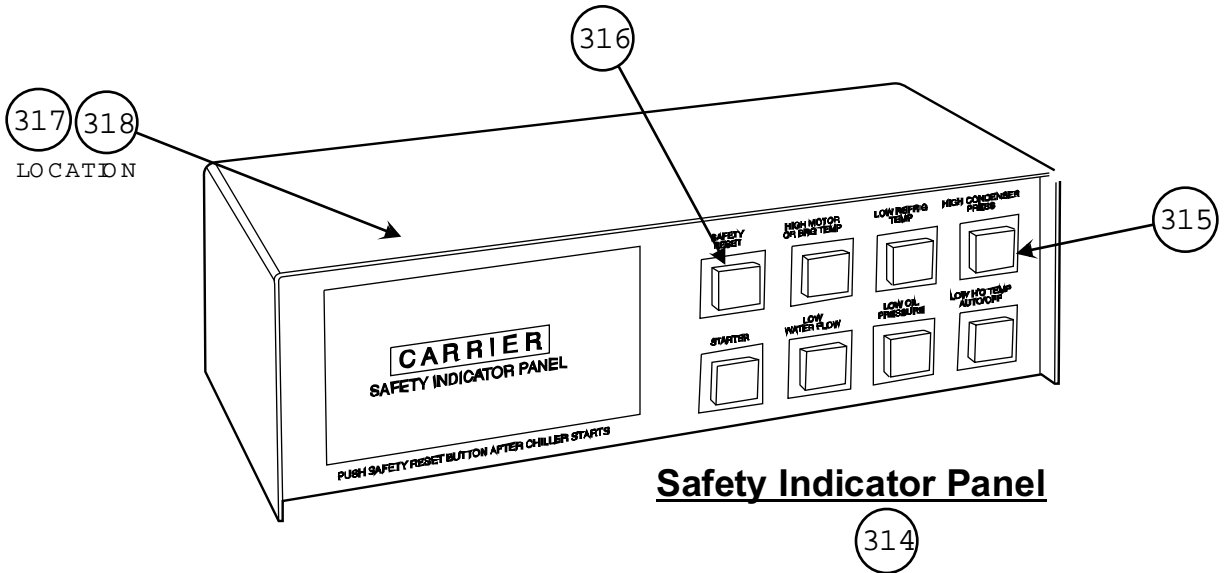
High Volt. Term .
19EA402123



High Volt. Term .
02EX44000101, K II NUMBER 19EF660001



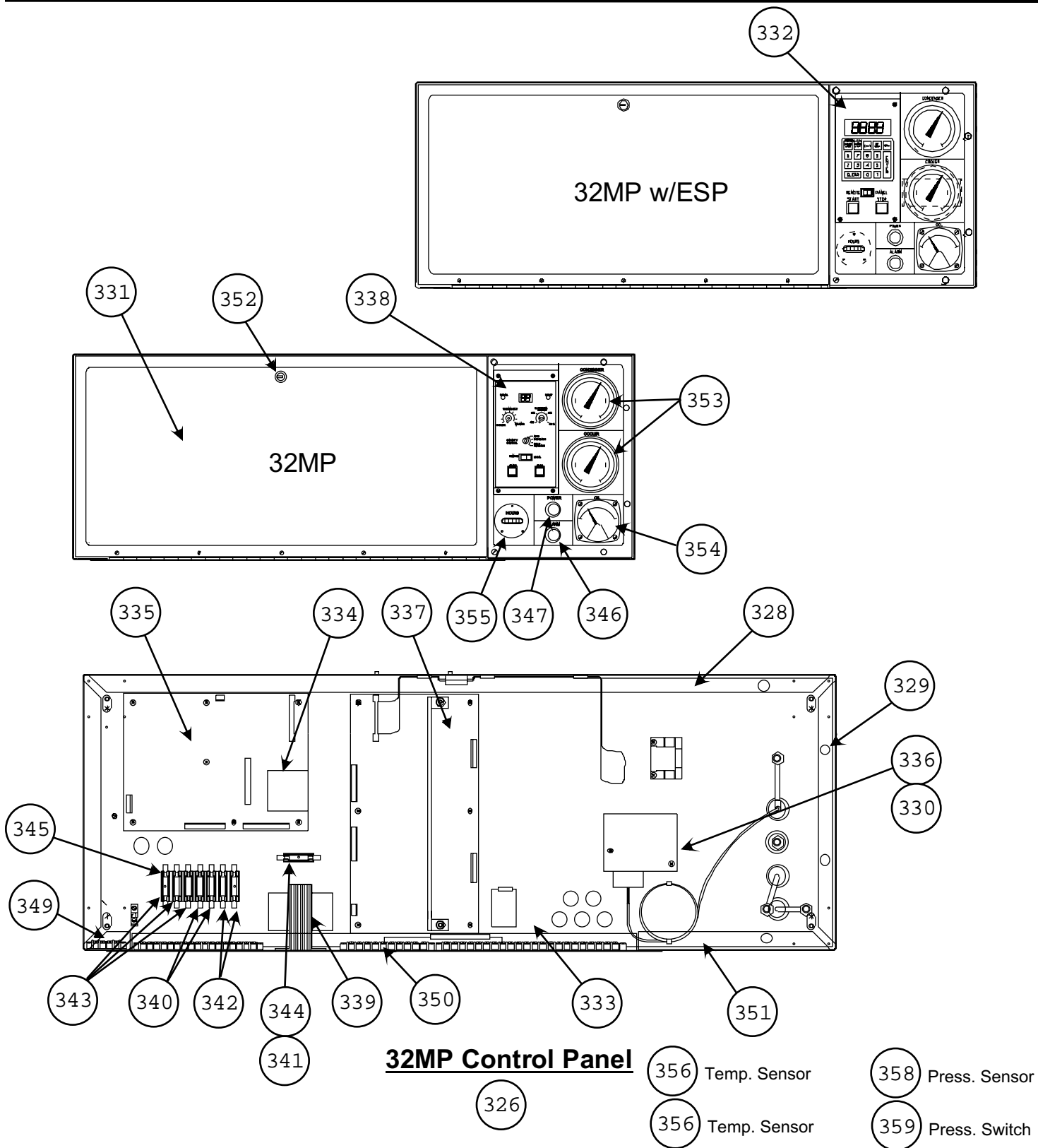
32SM- Electronic Controls



**Replacement
Components
Division**

Centrifugal Liquid Chiller (Includes 32SM, 32MP & PIC I)

19EF



Graphics Page: 19
Litho in U.S.A

Graphics Catalog

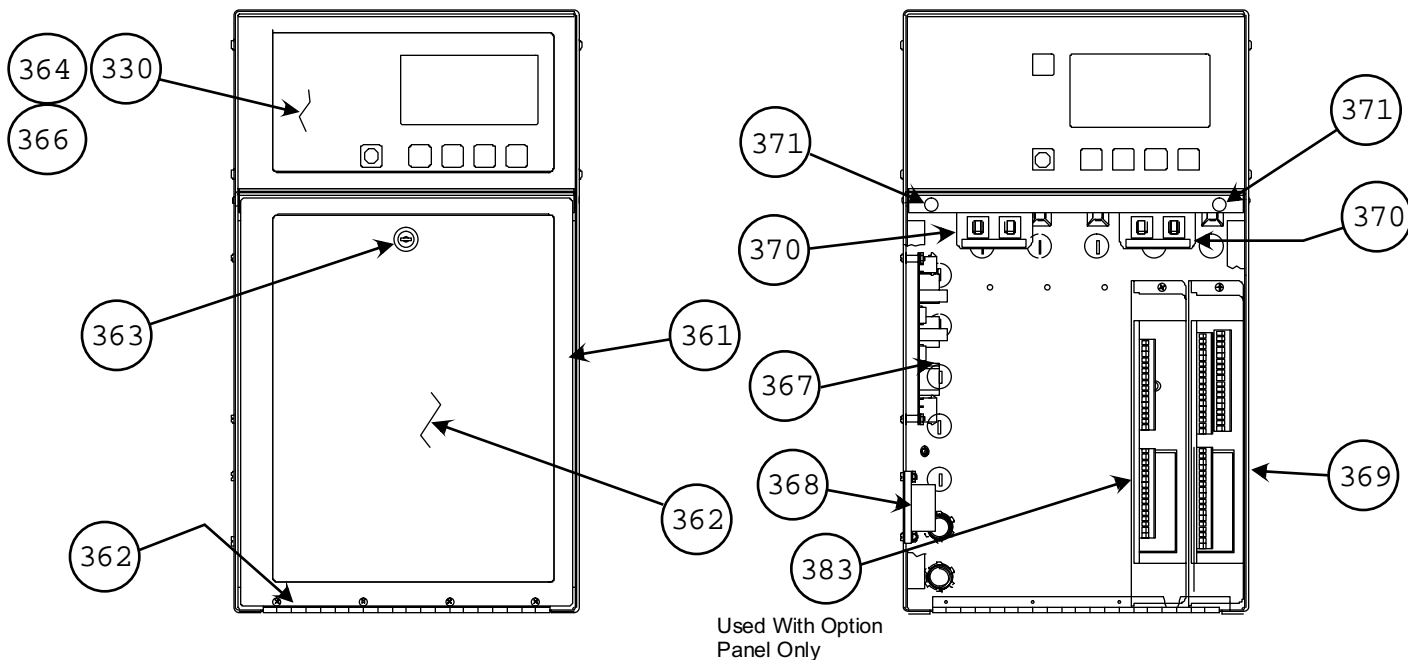
Catalog No: RCD-3519-066 (2/07)

Rev.

Supersedes: 19.005 (10/83)

Rev.

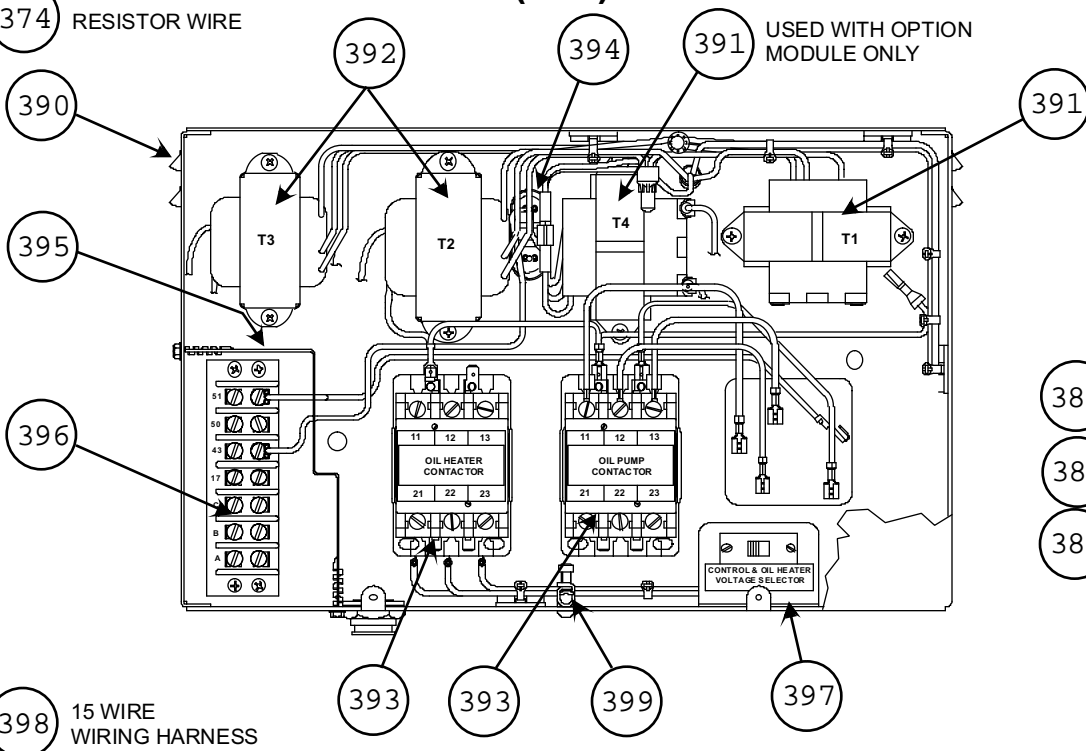




Control Panel (PIC)

372 15 WIRE, 5AMP WIRING HARNESS

374 RESISTOR WIRE

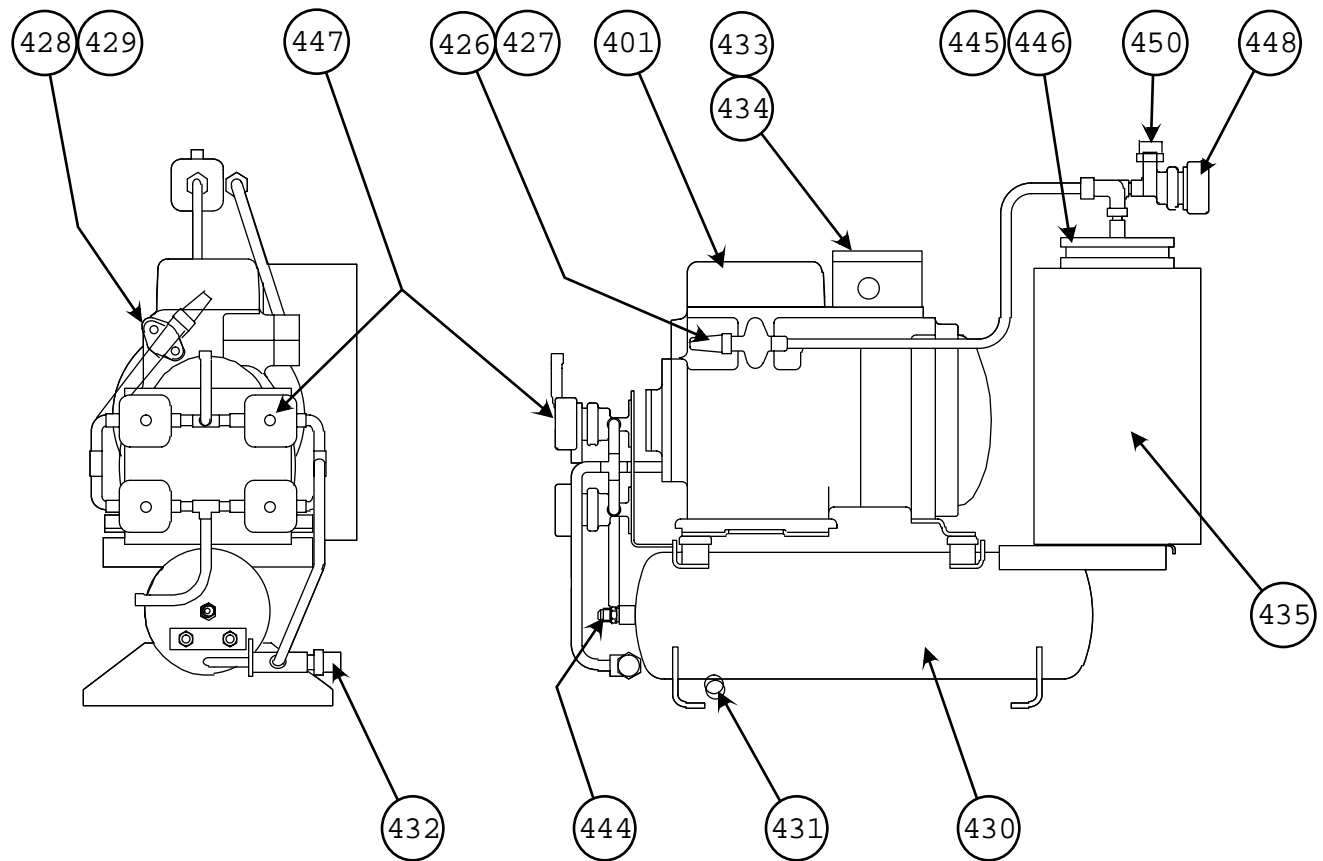


391 USED WITH OPTION MODULE ONLY

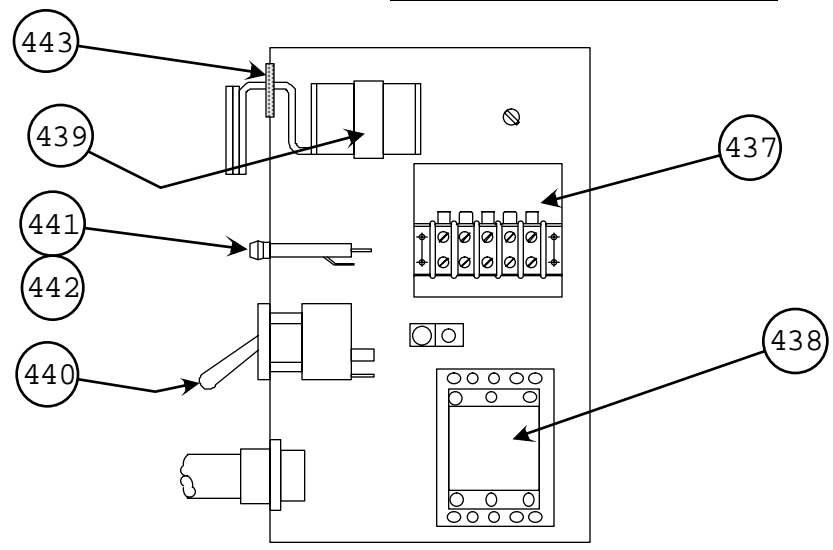
- 384 Press. Sensor
- 385 Press. Switch
- 387 High Disch. Press.

398 15 WIRE WIRING HARNESS

Power Panel



Pumpdown Assembly



Pumpdown Control Box Assembly

Model/Sales Package: 19EF



Model 19EF

Description HERMETIC CENTRIFUGAL CHILLER (32SM, 32MP, PIC I), ALL VOLTAGES

Itm#	Qty	Rec	Part Number	Description
1	1	-	KK71GX267	O-RING (27-3/4 X 28-1/4 X 1/4)
2	1	-	KK71ER201	O-RING (19-1/2 X 20 X 1/4)
3	1	-	KM14AC253	GAUGE,TEMPERATURE
4	1	-	KK71GX245	O-RING (24-1/2 X 24-3/4 X 1/8)
5	1	-	19EA411303LA	GASKET,MOTOR FLANGE
6	1	-	17FA1061003	COVER
7	1	-	HH16NA105	SENSOR,TEMPERATURE (OIL SUMP)
8	1	-	KK71GW223	O-RING (21-1/2 X 22 X 1/4)
9	1	-	17FA5021303LA	GASKET,INSPECTION COVER
10	1	-	HY19AD026	LIGHT,PILOT (OIL HEATER COVER)
11	1	-	17FA4021363	HEATER,OIL
12	1	-	17FA680001	GASKET,OIL HEATER
12A	1	-	KM14BC222	GAUGE,TEMPERATURE
13	1	-	19FA660028	SENSOR,TEMPERATURE
14	1	-	19EA411142	FUSE (1/8 AMP)
15	3	-	19EA412142	FUSE (1/8 AMP) (CONDUIT BOX)
16	1	-	HY85FP041	TERMINAL (MOTOR TEMP. SENSOR)
17	1	-	AU51YA015	WASHER,GASKET (1/2)
18	1	-	KK71GZ018	O-RING (1-5/8 X 1-7/8 X 1/80)
19A	1	-	19EA532034	LABYRINTH (1ST STAGE) (3 SHROUD)
19B	1	-	19EA542034	LABYRINTH (1ST STAGE) (4 SHROUD)
19C	1	-	19EA552034	LABYRINTH (1ST STAGE) (5 SHROUD)
19D	1	-	19EA562034	LABYRINTH (1ST STAGE) (6 SHROUD)
20A	1	-	19EF502154	TRANSMISSION ASY (60HZ) (REF. ONLY)
20B	1	-	19EF512154	TRANSMISSION ASY (50HZ) (REF. ONLY) includes
21	1	-	19EF502274	> TRANS. & BEARING CAP ASSEMBLY includes
22	1	-	AX23AT232	> > PIN,DOWEL (3/4 DIA X 1-1/4 LG)
23	1	-	19EF512204	> GEAR BEARING ASSEMBLY (BULL) includes
24	2	-	AX11AR122	> > PIN,DOWEL (3/16 DIA X 1/2 LG)
25	1	-	17FA5022094	> LABYRINTH,SHAFT
26	1	-	17FA5021243	> WINDAGE BAFFLE
27	6	-	17FA4021072	> SPACER
28	1	-	19EF5121142	> KEY,BEARING
29	1	-	19EF502113	> TUBE ASY,GEAR SPRAY
30	2	-	KK71GX052	> O-RING (5-5/8 X 5-7/8 X 1/8)
31	4	-	19EF5021092	> SPACER
32	1	-	19EF502313	> GEAR SHROUD ASY (BOTTOM)
33	1	-	19EF512313	> GEAR SHROUD ASY (TOP)
34	1	-	19EF522313	> GEAR SHROUD
35	3	-	19EF5121092	> SPACER
36	1	-	19EF5221092	> SPACER
37	1	-	KK71GX011	> O-RING (GEAR SPRAY LINE)
38A	1	-	19EA51831	> GEAR PACKAGE (PINION)(60 HERTZ)
38B	1	-	19EA56831	> GEAR PACKAGE (PINION)(50 HERTZ)
39	1	-	19EA511922	> KEY,PINION
40	1	-	19EA411063	> DEMISTER
41	1	-	KK71GU031LA	> O-RING (DEMISTER COVER)
42	4	-	19EA411792	> NOZZLE
43	1	-	19EF512224	> BEARING,PINION GEAR
44	1	-	17FA502354	BEARING ASSEMBLY,THRUST includes
45	8	-	19EA512032	> PAD,SPACER
46	16	-	19EA520163	> PAD,LEVELING
47	1	-	17FA502344	> BASE RING ASY
48	6	-	AA44AA246	> SCREW,SOCKET HEAD CAP
49	1	-	17FA502103	> SHOE RETAINING ASY
50	1	-	17FA502212	> SHOE SET

Itm#	Qty	Rec	Part Number	Description
51	1	-	17FA502383	BEARING, JOURNAL
52	1	-	19EB512102	SEAL HOUSING ASY includes
53	12	-	19EA411291	> SPRING
54	1	-	19EA511392	> SPRING RETAINER
55	1	-	AU46AR976	> RETAINING RING
56	1	-	17FA502113	BEARING, COUNTER THRUST
57	1	-	19EA511172	RING, CONTACT
58	1	-	19EA511382	SLINGER
59	1	-	19EB5121012	RING, SEAL
60	1	-	19EA511882	SHIM, IMPELLER
61	1	-	19EA531882	SHIM, IMPELLER
62	1	-	17FA502213	SHIM, THRUST BEARING
63	6	-	17FA5021362	KEY, IMPELLER
64	1	-	19EA511892	SLEEVE, SHAFT
65	1	-	19EA511372	SPACER, IMPELLER
66	1	-	17FA5121602	LOCKNUT, IMPELLER
67	1	-	17FA5021052	RETAINER, BEARING
68	2	-	17FA4021372	KEY
69	2	-	AE17AR166	SCREW, SET (1/4-20 X 1/2)
70	1	-	KK71GX024	O-RING (2-5/8 X 2/3/4 X 1/16)
71	1	-	KK71GX031	O-RING (3-1/4 X 3-1/2 X 1/8)
72	1	-	KK71GZ051	O-RING (4-7/8 X 5-1/8 X 1/8)
73	1	-	AX11AR037	PIN, DOWEL (3/32 DIA X 1/2 LG)
74	1	-	AX27AB122	PIN, DRIVE
75	1	-	19EA41262	VALVE, CHECK
76	1	-	17FA5021602	LOCKNUT, IMPELLER
77	1	-	17FA502143	MOUNTING RING ASY, DISPLACEMENT
78	1	-	19EA511862	SEAL RING
79A	1	-	17FA5021333	LABYRINTH, BAL. PISTON (A3 & A4 SHROUD)
79B	1	-	17FA5021343	LABYRINTH, BAL. PISTON (A5 W/ R-500)
79C	1	-	17FA5021353	LABYRINTH, BAL. PISTON (A5 W/ R-12)
79D	1	-	17FA5021353	LABYRINTH, BAL. PISTON (A6 SHROUD)
80A	1	-	19EA532044	LABYRINTH, 2ND STAGE (A3 SHROUD)
80B	1	-	19EA542044	LABYRINTH, 2ND STAGE (A4 SHROUD)
80C	1	-	19EA552044	LABYRINTH, 2ND STAGE (A5 SHROUD)
80D	1	-	19EA562044	LABYRINTH, 2ND STAGE (A6 SHROUD)
81	1	-	19EF5021004	SHAFT, IMPELLER
82	1	-	19FA680006	DETECTOR ASY
83	1	-	17FA502402	SENSOR, THRUST BEARING TEMP. (32SM)
84	1	-	HH79NZ050	SENSOR, THRUST BEARING TEMP. (32MP/PIC)
85	1	-	19EA511312	RING, SEAL
86	1	-	19EA511962	RING, CONTACT
87	1	-	19EA511362	LOCKNUT
88	1	-	19EA511972	BEARING, BELL END
89	3	-	KK71GZ041	O-RING (3-7/8 X 4-1/8 X 1/8)
90	2	-	KK71GX060	O-RING (6 X 6-1/4 X 1/8)
91	2	-	KK71GX052	O-RING (5-5/8 X 5-7/8)
92	1	-	KK71GX037	O-RING (3-3/4 X 4-1/8)
93	1	-	AX11AR037	DOWEL PIN (3/32 DIA X 3/8 LG)
94	2	-	AE19AR100	SET SCREW
95	1	-	19EA4121714	COVER, BEARING HOUSING
96	1	-	CA63AA301	PIPE PLUG (1-1/4 HEX HEAD)
97	1	-	19EA52173	BEARING HOUSING ASSEMBLY includes
98	1	-	19EA511194	> RING, SPRAY
99	1	-	19EA521023	> LABYRINTH
100	1	-	19EA511952	> SPRING
101	1	-	19EA5121013	> PRESSURE PLATE
102	1	-	19EA512062	> DOWEL PIN (1/4 DIA X 15/16" LG)
103	3	-	AX11AR130	> DOWEL PIN (3/16 DIA X 1" LG)

Itm#	Qty	Rec	Part Number	Description
104	1	-	19EB511123	MOTOR,ACTUATOR includes
105	1	-	HT24AZ120	> POTENTIOMETER
106	1	-	17FA512303	CHAIN GUARD (ABS)
107	1	-	19EA512482	CHAIN KIT
108	2	-	17FA5021583	SPROCKET HUB (SHAFT)
109	1	-	17FA5021692	SPROCKET (DRIVE)
110	1	-	17FA5121543	SPROCKET (SHAFT)
111	1	-	17FA5021782	KEY (SPROCKET/SHAFT)
111A	1	-	19EA411021LA	GASKET,SEAL HOUSING
111B	1	-	KK71EW229	O-RING,SEAL HOUSING
112	1	-	19EA421042	SEAL RETAINER
113	1	-	KT53XL093	BUSHING
114	2	-	AA06GR237	CAP SCREW,HEX HEAD
115	1	-	19EA411031	PELLET
116	1	-	AU51YA391	WASHER,THRUST
117	1	-	19EA431052	SHAFT,DRIVE PULLEY
118	1	-	KK71HT016	"V" RING ASSEMBLY (PRESSURE)
119	1	-	KK71HT014	"V" RING ASSEMBLY (VACUUM)
120	1	-	AX14CA044	ROLLPIN
121	1	-	19D211391	KEY
122	14	-	KT53XL102	BUSHING,PRE WHIRL BLADE
123A	1	-	19EA53467	BLADE RING ASSEMBLY (SHROUD A3)
123B	1	-	19EA55467	BLADE RING ASSEMBLY (SHROUD A4)
123C	1	-	19EA57467	BLADE RING ASSEMBLY (SHROUD A5)
123D	1	-	19EA59467	BLADE RING ASSEMBLY (SHROUD A6) includes
124	1	-	19EA51102	> CABLE ASSEMBLY
125	7	-	19EA660017	> PRE-WHIRL BLADE PACKAGE
126	7	-	KT53XL065	> BUSHING,IDLER PULLEY
127	7	-	AU48AR062	> RING,RETAINING
128	7	-	19EA512022	> PIN,IDLER PULLEY
129	7	-	19C47771	> IDLER PULLEY
130	1	-	19EA511003	> DRIVE PULLEY
131	7	-	AU02AA332	> WASHER,THRUST
132	6	-	19EA512142	> BLADE PULLEY
133	7	-	AA13BR295	> CAP SCREW,HEX HEAD
134A	2	-	17FA5231263	GASKET,COOLER WATERBOX: Note: Used on machines with a cooler code of 19,20,21,49,50 & 51.
134B	2	-	17FA5631263	GASKET,COOLER WATERBOX: Note: Used on machines with a cooler code of 22,24,25,26,52,54,55,56.
134C	2	-	17FA5931263	GASKET,COOLER WATERBOX: Note: Used on machines with a cooler code of 27,28,29,57,58 & 59.
135A	2	-	17FA4241133	GASKET,CONDENSER WATERBOX: Note: Used on machines with a condenser code/size of 10, 11 & 12.
135B	2	-	17FA4641133	GASKET,CONDENSER WATERBOX: Note: Used on machines with a condenser code/size of 14, 15 & 16.
135C	2	-	17FA4941133	GASKET,CONDENSER WATERBOX: Note: Used on machines with a condenser code/size of 18 & 19.
135D	2	-	17FA5241133	GASKET,CONDENSER WATERBOX: Note: Used on machines with a condenser code/size of 20, 21 & 22.
135E	2	-	17FA5641133	GASKET,CONDENSER WATERBOX: Note: Used on machines with a condenser code/size of 24, 25 & 26.
135F	2	-	17FA5941133	GASKET,CONDENSER WATERBOX: Note: Used on machines with a condenser code/size of 27, 28 & 29.
135G	2	-	17FA6241133	GASKET,CONDENSER WATERBOX: Note: Used on machines with a condenser code/size of 30, 31 & 32.
136	1	-	19XB680001	SEALING STRIP,DIVISION PLATE (20 FT)
137A	448	-	TUBES QTY	TUBE QUANTITY (COOLER CODE/SIZE 19)
137B	512	-	TUBES QTY	TUBE QUANTITY (COOLER CODE/SIZE 20)
137C	576	-	TUBES QTY	TUBE QUANTITY (COOLER CODE/SIZE 21)
137D	640	-	TUBES QTY	TUBE QUANTITY (COOLER CODE/SIZE 22)
137E	704	-	TUBES QTY	TUBE QUANTITY (COOLER CODE/SIZE 24)
137F	768	-	TUBES QTY	TUBE QUANTITY (COOLER CODE/SIZE 25)

Itm#	Qty	Rec	Part Number	Description
137G	832	-	TUBES QTY	TUBE QUANTITY (COOLER CODE/SIZE 26)
137H	896	-	TUBES QTY	TUBE QUANTITY (COOLER CODE/SIZE 27)
137I	960	-	TUBES QTY	TUBE QUANTITY (COOLER CODE/SIZE 28)
137J	1024	-	TUBES QTY	TUBE QUANTITY (COOLER CODE/SIZE 29)
137K	448	-	TUBES QTY	TUBE QUANTITY (COOLER CODE/SIZE 49)
137L	512	-	TUBES QTY	TUBE QUANTITY (COOLER CODE/SIZE 50)
137M	576	-	TUBES QTY	TUBE QUANTITY (COOLER CODE/SIZE 51)
137N	640	-	TUBES QTY	TUBE QUANTITY (COOLER CODE/SIZE 52)
137P	704	-	TUBES QTY	TUBE QUANTITY (COOLER CODE/SIZE 54)
137Q	768	-	TUBES QTY	TUBE QUANTITY (COOLER CODE/SIZE 55)
137R	832	-	TUBES QTY	TUBE QUANTITY (COOLER CODE/SIZE 56)
137S	896	-	TUBES QTY	TUBE QUANTITY (COOLER CODE/SIZE 57)
137T	960	-	TUBES QTY	TUBE QUANTITY (COOLER CODE/SIZE 58)
137U	1024	-	TUBES QTY	TUBE QUANTITY (COOLER CODE/SIZE 59)
138A	172	-	TUBES QTY	TUBE QUANTITY (COND. CODE/SIZE 10)
138B	206	-	TUBES QTY	TUBE QUANTITY (COND. CODE/SIZE 11)
138C	240	-	TUBES QTY	TUBE QUANTITY (COND. CODE/SIZE 12)
138D	274	-	TUBES QTY	TUBE QUANTITY (COND. CODE/SIZE 14)
138E	308	-	TUBES QTY	TUBE QUANTITY (COND. CODE/SIZE 15)
138F	344	-	TUBES QTY	TUBE QUANTITY (COND. CODE/SIZE 16)
138G	412	-	TUBES QTY	TUBE QUANTITY (COND. CODE/SIZE 18)
138H	480	-	TUBES QTY	TUBE QUANTITY (COND. CODE/SIZE 19)
138I	550	-	TUBES QTY	TUBE QUANTITY (COND. CODE/SIZE 20)
138J	618	-	TUBES QTY	TUBE QUANTITY (COND. CODE/SIZE 21)
138K	686	-	TUBES QTY	TUBE QUANTITY (COND. CODE/SIZE 22)
138L	754	-	TUBES QTY	TUBE QUANTITY (COND. CODE/SIZE 24)
138M	824	-	TUBES QTY	TUBE QUANTITY (COND. CODE/SIZE 25)
138N	892	-	TUBES QTY	TUBE QUANTITY (COND. CODE/SIZE 26)
138P	960	-	TUBES QTY	TUBE QUANTITY (COND. CODE/SIZE 27)
138Q	1030	-	TUBES QTY	TUBE QUANTITY (COND. CODE/SIZE 28)
138R	1098	-	TUBES QTY	TUBE QUANTITY (COND. CODE/SIZE 29)
138S	1252	-	TUBES QTY	TUBE QUANTITY (COND. CODE/SIZE 30)
138T	1406	-	TUBES QTY	TUBE QUANTITY (COND. CODE/SIZE 31)
138U	1560	-	TUBES QTY	TUBE QUANTITY (COND. CODE/SIZE 32)
139	2	-	19EA411432LA	GASKET (14-1/4 B.C.)
140	2	-	CT99GX201	GASKET,RING (3/4" NOM.)
141	2	-	DD24FA051	GASKET,FLARE (1/4")
142	2	-	19EB660005	VALVE,RELIEF (1" NPT X 1-1/4 NPT)
143	1	-	8024	VALVE,3-WAY SHUTOFF
144	1	-	19FA660031	FILTER ASSEMBLY includes
145	1	-	KH33QA182	> HOUSING,FILTER
146	1	-	17S40001	> CARTRIDGE,FILTER
147	1	-	17FA4021992	> SPRING,COMPRESSION
148	1	-	A-14841	VALVE,DIAPHRAM (1/2")
149A	1	-	EB51FZ181	VALVE,RELIEF (1/2"): Note: Used on machines with a cooler size/code of 19 thru 26.
149B	1	-	19EB660005	VALVE,RELIEF (1"): Note: Used on machines with a cooler size/code of 27 thru 59.
150	1	-	HL79ZZ002	WELL,THERMOMETER
151	1	-	HH24ZB033	SWITCH,LOW REFRIERANT TEMP. (32SM)
152	1	-	HH24ZC037	SWITCH,CHILLER WATER TEMP. (32SM)
153	1	-	32SM500234	CONTROLLER W/PROBE
154	2	-	19EA411432LA	GASKET (14-1/4 B.C.)
155	1	-	17FA1011052LA	GASKET (11-3/4 B.C.)
156	2	-	EF71CQ310	VALVE,BALL (1")
157	2	-	CT99GX601LA	GASKET,RING (4" NOM.)
158	1	-	CT99GX401LA	GASKET,RING (2" NOM.) (MOTOR DRAIN)
159	1	-	17FA101173	LIQUID LEVEL ASSEMBLY
160A	1	-	19EA511432LA	GASKET (18-3/4 B.C.): Note: Used on machines with a cooler size/code of 19,20,21,49,50 & 51.

Itm#	Qty	Rec	Part Number	Description
160B	1	-	17FA2411052LA	GASKET (21-1/4 B.C.): Note: Used on machines with a cooler size/code of 21 - 29 & 52 - 59.
161	3	-	CT99GX651LA	GASKET,RING (5" NOM.)
162	3	-	CT99GX251LA	GASKET,RING (1" NOM.)
163	1	-	CT99GX151	GASKET,RING (1/2" NOM.)
164	2	-	19EB660006	VALVE,RELIEF (1" X 1-1/4) (TANK)
165	1	-	A-14841	VALVE,DIAPHRAM (1/2") (TANK)
166	1	-	7792-B	VALVE,ANGLE (1/2") (TANK)
167	1	-	DD24FA151	GASKET,FLARE (1/2") (TANK)
168	1	-	19EF412103	OIL COOLER ASY
169	2	-	17S40001	CARTRIDGE,FILTER
170	1	-	19C35731	FILTER GUIDE
171	1	-	19EA41512	STOPPER ASY
172	1	-	19C354991	SPRING
173	1	-	KK71GZ034	O-RING
174	5	-	DK29GA005LA	GASKET
175	1	-	EF11CM182	VALVE,SOLENOID
176A	1	-	19EF402114	PUMP,OIL (200-240V 60HZ)
176B	1	-	19EF412114	PUMP,OIL (220-240V 60HZ)
176C	1	-	19EF422114	PUMP,OIL (380-460V 60HZ)
176D	1	-	19EF432114	PUMP,OIL (550-600V 60HZ) includes
177	1	-	17FA4021174	> HOUSING,MOTOR
178	1	-	19EF4021014	> COVER,MOTOR HOUSING
179	1	-	KK71GZ065	> O-RING,MOTOR HOUSING COVER
180	1	-	19EA5111143	> COVER,OIL PUMP
181	1	-	02XB35024701	> SLEEVE
182	1	-	02XB35036101	> SLEEVE
183	1	-	HY85FP060	> TERMINAL PKG,MOTOR (W/TERMINAL)
184	1	-	17FA4021003	> CAP,VALVE
185	1	-	17FA4121002	> SPRING,COMPRESSION
186	1	-	KK71PR025	> O-RING,VALVE CAP
187	1	-	17FA4021013	> PISTON
188	1	-	17FA4021012	> COVER,TERMINAL BOX
189	2	-	AX11AR172	> DOWEL PIN (1/4 DIA X 1-1/4 LG)
190	2	-	AX11AR168	> DOWEL PIN (1/4 DIA X 3/4 LG)
191	1	-	19D211011	> RING,CLAMPING (ROTOR)
192	1	-	02XB05002401	> ROTOR (1-1/2 HP)
193	1	-	02XB05002301	> STATOR
194	1	-	19EA415394	> HOUSING,OIL PUMP
195	4	-	19EA517012	> VANE,PUMP
196	1	-	19EA5111133	> SHAFT,PUMP MOTOR
197	1	-	KK71GZ085	O-RING (OIL PUMP MOUNTING)
198	2	-	KM36BQ199	SIGHTGLASS (OIL SUMP)
199	1	-	EP12BH331	VALVE,SHUTOFF
200	1	-	19EA41363	TERM. ARG. "D" MTR. (LO-VOLT): Note: For Complete Replacement Order Kit 19FA660026.
201	1	-	200 THRU 575 VOLT	USED ON MOTOR VOLTAGE includes
202	1	-	19EA421573	> TERMINAL BOARD (LO-VOLT)
203	2	-	19EA411142	> PACKING GLAND (LO-VOLT)
204	2	-	19EA42353	> TERMINAL STUD ASY (LO-VOLT)
205	12	-	AT14QA361	> JAM NUT (LO-VOLT)
206	2	-	19EA412432	> PACKING RING (LO-VOLT)
207	10	-	AA06BS235	> CAPSCREW,HEXHEAD (LO-VOLT)
208	10	-	AU02AB242	> WASHER,PLAIN (LO-VOLT)
209	6	-	AU02QA361	> WASHER,BRASS (LO-VOLT)
210	2	-	AU51AS541	> WASHER,SPRING (BELL) (LO-VOLT)
211	1	-	KK74ZW487	> QUAD RING (LO-VOLT)
212	1	-	19EF402173	TERM. ARG. "H" MTR (HI-VOLT)
213	1	-	2.4, 3.3, 4.16 KV	USED ON MOTOR VOLTAGE includes

Itm#	Qty	Rec	Part Number	Description
214	1	-	KK74ZW487	> QUAD RING (HI-VOLT)
215	10	-	AU02AB242	> WASHER,PLAIN (HI-VOLT)
216	1	-	19EF4021013	> TERMINAL BOARD (HI-VOLT)
217	10	-	AA06BS235	> CAPSCREW,HEXHEAD (HI-VOLT)
218	1	-	19EF680001	> TERMINAL INSULATOR (HI-VOLT)
219	2	-	19FA5021242	> TERMINAL RETAINER (HI-VOLT)
220	1	-	19FA5021232	> PACKING RING (HI-VOLT)
221	1	-	SOLD W/19EF680001	> PACKING NUT (HI-VOLT)
222	1	-	AT14QA311	> JAM NUT (HI-VOLT)
223	1	-	KK71GX015	> "O" RING (HI-VOLT)
224	1	-	19EA41004	> ADAPTER (AWG #4) (HI-VOLT)
225	1	-	19EA41005	> ADAPTER (AWG #1) (HI-VOLT)
226	1	-	19EA402123	TERMINAL ARRANGEMENT (HIGH VOLTAGE) includes
227	1	-	KK71ZR001	> O-RING
228	10	-	AU02AB242	> WASHER,PLAIN (3/8)
229	1	-	19EA531183	> TERMINAL BOARD (PLASTIC)
230	10	-	AA06BS235	> CAPSCREW,HEX HEAD
231	1	-	19EF680002	> TERMINAL INSULATOR/PACKING NUT KIT
232	2	-	19EA4021042	> TERMINAL RETAINER
233	1	-	19EA4021052	> PACKING RING
234	1	-	1919FA5021232	> PACKING RING
235	1	-	AT14QA311	> JAM NUT
236	1	-	19FA5021242	> TERMINAL RETAINER
237	1	-	19EF680002	> PACKING NUT/TERMINAL INSULATOR KIT
238	1	-	19EA41004	> TERMINAL ADAPTER (.611 O.D. CABLE)
239	1	-	9EA41005	> TERMINAL ADAPTER (.789 O.D. CABLE)
240	1	-	19EF660001	MOTOR TERMINAL KIT (HI-VOLTAGE) includes
241	3	-	02EX45000201	> TERMINAL BOARD
242	3	-	02XB05003001	> TERMINAL INSULATOR includes
243	1	-	KK71EW325	> > O-RING,INNER
244	1	-	KK71EW311	> > O-RING,OUTER
245	1	-	19XR660018	> > TERMINAL REBUILD KIT
246	1	-	02XB05003101	> > TERMINAL STUD
247	3	-	KK74ZW487	> QUAD RING
248	30	-	AA06BS234	> BOLT
249	10	-	AU02AB242	> WASHER,PLAIN
250	1	-	17FA101644	DEHYDRATOR ASSEMBLY (REF. ONLY) includes
251	1	-	CT28MP035	> COUPLING,V-BAND
252	1	-	KK71GX031	> O-RING
253	1	-	TS380	> GLAND,SIGHT GLASS
254	1	-	5F201631012	> GASKET,OUTER
255	1	-	19C356151	> SIGHTGLASS
256	1	-	19DK1191012	> GASKET,INNER
257	1	-	19EA41757	> FLOAT VALVE & COVER ASSEMBLY includes
258	1	-	TS380	> > GLAND
259	1	-	5F201631	> > GASKET,OUTER
260	1	-	19C356151	> > SIGHTGLASS
261	1	-	5F201011	> > GASKET,INNER
262	1	-	EC29WN211	> > VALVE
263	1	-	EC28HZ023	> > FLOAT BALL
264	1	-	19DA11501	> > FLOAT ARM ASSEMBLY
265	1	-	19DA115043	> > FLOAT COVER
266	1	-	EP20LA093	> VALVE,ANGLE
267	1	-	KM03AF280	> GAUGE,PRESSURE
268	1	-	19CB7211012	> ORIFICE (.062 DIA)
269	1	-	EP23LC090	> VALVE,ANGLE
270	1	-	891S-1/2	> STRAINER
271	2	-	17FA1051023LA	GASKET,FLOAT CHAMBER
272	2	-	17FA1051112	GASKET,VALVE PLATE

Itm#	Qty	Rec	Part Number	Description
273	1	-	17FA1051073	GASKET,VALVE CHAMBER (HI-SIDE)
274	1	-	19EA41852	ORIFICE,STRAINER ASY
275	1	-	17FA1051132	SEAL,SHAFT
276	1	-	EC28HZ243	BALL,FLOAT (8")
277	1	-	17FA115122	FLOAT ARM & BRACKET (HI-SIDE)
278A	1	-	17FA105154	VALVE ASY,FLOAT (HI-SIDE)(LESS BALL/ARM): Note: Used on machine with a condenser size/code of 10 thru 19.
278B	1	-	17FA115154	VALVE ASY,FLOAT (HI-SIDE)(LESS BALL/ARM): Note: Used on machine with a condenser size/code of 20 thru 26.
278C	1	-	17FA125154	VALVE ASY,FLOAT (HI-SIDE)(LESS BALL/ARM): Note: Used on machine with a condenser size/code of 27 thru 32.
279A	1	-	17FA105144	VALVE ASY,FLOAT (LO-SIDE): Note: Used on machine with a condenser size/code of 10 thru 19.
279B	1	-	17FA115144	VALVE ASY,FLOAT (LO-SIDE): Note: Used on machine with a condenser size/code of 20 thru 22.
279C	1	-	17FA125144	VALVE ASY,FLOAT (LO-SIDE) includes: Note: Used on machine with a condenser size/code of 24 thru 32.
280	1	-	17FA660024	> BALL & ARM ASSEMBLY
281A	1	-	17FA105103	RETAINER,STRAINER: Note: Used on machine with a condenser size/code of 10 thru 19.
281B	1	-	17FA525103	RETAINER,STRAINER: Note: Used on machine with a condenser size/code of 20 thru 32.
282A	1	-	17FA1051083	STRAINER,CONE: Note: Used on machine with a condenser size/code of 10 thru 19.
282B	1	-	17FA5251083	STRAINER,CONE: Note: Used on machine with a condenser size/code of 20 thru 32.
283	1	-	17FA506114	CONTROL ASY (32SM) includes
284	1	-	KA19NL010	> LOCK,CAM W/KEYS
285	2	-	KM03AF362	> GAUGE,PRESSURE (COND & COOL)
286	1	-	KM05BW220	> GAUGE,OIL DIFFERENTIAL
287	1	-	HK06CB402	> SWITCH,LOW OIL PRESSURE
288	1	-	HK01UA183	> SWITCH,COND. HI-PRESSURE CUTOUT
289	1	-	HY84EF060	> TERMINAL BLOCK
290	1	-	HK28ZZ115	> ELAPSE TIME INDICATOR (60HZ)
291	1	-	HK28DG116	> ELAPSE TIME INDICATOR (50HZ)
292	1	-	HY84EG002	> TERMINAL BLOCK
293	1	-	HN65BJ090	> CONTROL MODULE DUAL SENSOR
294	2	-	19EA42612	> TRANSFORMER
295	1	-	HR52ZD040	> SWITCH,PUSH BUTTON (ON/STOP)
296	2	-	HR54ZA020	> SWITCH,PUSH BUTTON (START/OIL PUMP
297	4	-	HY19MM020	> LIGHT,INDICATOR (PWR/SAFETY/LOAD/P
298	1	-	32SM500704	> MODULE,CONTROL
299	1	-	19EA415531	> STRIP,MAGNETIC
300	1	-	32SM400694	> MODULE ASY,RELAY includes
301	2	-	32SM400702	> > LIGHT ASY,INDICATING (BRG & MTR)
302	1	-	HK25ZD030	> > TIMER,ELECTRICAL SEQUENCE
303	3	-	HN61KL615	> > RELAY (KM,KB,K3)
304	1	-	HN61KL615	> > RELAY (K1)
305	1	-	HN61KL616	> > RELAY (K2)
306	1	-	HY12FU022	> > FUSE HOLDER
307	1	-	AGC3	> > FUSE (3 AMP)
308	1	-	HH24ZC037	SWITCH,TEMP.(LO-CHILLED H20)(1/2 NPT)
309	1	-	19EA660027	SWITCH,TEMP.(LO-CHILLED H20)
310	1	-	HH16NA019	THERMOSTAT,OIL HEATER
311	1	-	HK06CB402	SWITCH,PRESS. (LO-OIL PRESSURE)
312	1	-	HK01UA183	SWITCH,PRESS. (CONDENSER HI-PRESS.)
313	1	-	HK01CA015	SWITCH,PRESS. (COOLER LO-PRESS.)
314	1	-	32GA900001	SAFETY INDICATOR PANEL includes
315	7	-	HR54ZA020	> SWITCH,PUSH BUTTON (WHITE)
316	1	-	HR54ZA040	> SWITCH,PUSH BUTTON (RED)(RESET)
317	11	-	HN61KL616	> RELAY
318	11	-	48DA660028	> RECEPTACLE,RELAY

Itm#	Qty	Rec	Part Number	Description
319	1	-	32SM900001	LEAD-LAG CONTROL ASSEMBLY includes
320	3	-	HR54ZA001	> SWITCH
321	1	-	32SM500623	> POTENTIOMETER
322	1	-	KA21RB156	> KNOB
323	1	-	32SM500843	> SWITCH,SELECTOR
324	1	-	HN67SK007	> RELAY
325	4	-	HN61KL616	> RELAY
326A	1	-	19EF106144	CONTROL ASY (32MP) (BASIC)(60HZ)
326B	1	-	19EF116144	CONTROL ASY (32MP) (BASIC)(50HZ)
326C	1	-	19EF106154	CONTROL ASY (32MP) (W/OPTIONS)(60HZ)
326D	1	-	19EF116154	CONTROL ASY (32MP) (W/OPTIONS)(50HZ) includes
327	1	-	19DR516484	> CONTROL BOX (SHEET METAL)
328	1	-	19EA415531	> STRIP,MAGNETIC
329	5	-	19EA416032	> SPACER
330	1	-	19EB4161032	> BRACKET,SWITCH
331	1	-	19EB4161073	> DOOR
332	1	-	32MP400934	> EXPANDED PANEL ASY (ESP)
333	1	-	19EB516222	> CAPACITOR ASY (LOAD RESISTOR)
334	1	-	32MP400954	> BOARD,MEMORY EXPANSION (PCB #5)
335	1	-	32MP400974	> BOARD,PROCESSOR (PCB #1)
336	1	-	HK01UA183	> SWITCH,PRESSURE (MAN. RESET)(COND.)
337	1	-	HK35EZ002	> BOARD,SYSTEM (I/O)(PCB #2)
338	1	-	HK35EZ003	> BOARD,DISPLAY (SET POINT) (PCB #3)
339	1	-	HT01BE115	> TRANSFORMER
340	2	-	MDL3/4	> FUSE (F18 & F19)
341	1	-	MDL1	> FUSE (F14)
342	2	-	MDL3	> FUSE (F20 & F21)
343	3	-	MGB1/8	> FUSE (F15, F16 & F17)
344	1	-	S-8202-01	> BLOCK,FUSE (F14)
345	1	-	HY11UM007	> BLOCK,FUSE (F15 THRU F21)
346	1	-	HY19UC014	> LIGHT (ALARM) (RED)
347	1	-	HY19UC019	> LIGHT (POWER) (AMBER)
348	1	-	HY84EF002	> BLOCK,TERMINAL (4 TERMINAL)
349	1	-	HY84EF018	> BLOCK,TERMINAL (17 TERMINAL)
350	1	-	HY84EG010	> BLOCK,TERMINAL (10 TERMINAL)
351	1	-	HY84EG022	> BLOCK,TERMINAL (22 TERMINAL)
352	1	-	KA19NL010	> LOCK,CAM
353	2	-	KM03AF363	> GAUGE (COOLER & CONDENSER PRESS.)
354	1	-	KM05BW222	> GAUGE (OIL DIFFERENTIAL PRESS.)
355A	1	-	HK28DG115	> INDICATOR,ELAPSED TIME (60HZ)
355B	1	-	HK28DG116	> INDICATOR,ELAPSED TIME (50HZ)
356	1	-	HH79NZ024	SENSOR,TEMPERATURE (COOLER/COND.)
357	1	-	HH79NZ024	SENSOR,TEMPERATURE (CHILLED WATER)
358	1	-	HK05YZ007	TRANSDUCER,PRESS. (CLR/COND/OIL LINE)
359	1	-	HK02ZA218	SWITCH,PRESSURE (HIGH CUTOUT)
360A	1	-	19EX04000301	CONTROL ASY (PIC I)(BASIC) (REF. ONLY)
360B	1	-	19EX04000302	CONTROL ASY (PIC I)(OPTION) (REF. ONLY) includes
361	1	-	19XB04000401	> PANEL ASSEMBLY
362	1	-	19EX04000501	> DOOR PANEL ASSEMBLY
363	1	-	KA19NL010	> CAM LOCK (W/KEYS)
364	1	-	CES0130036	> LID ASSEMBLY (PIC CONTROL PANEL)
365	1	-	CECO120803-01	> LID BATTERY (SEE SB C9623)
366	1	-	HY19AD005	> BACK LIGHT (USED W/BACK LIT LID)
367	1	-	HK35AA003	> RELAY BOARD (6 PACK)
368	1	-	HK35AA002	> POWER SUPPLY/COMPARITOR (5V DC)
369	1	-	19EX04000601	> MODULE ASY (PSIO)
370	4	-	HH83ZB004	> CIRCUIT BREAKER
371	2	-	KA58MR001	> RUBBER BUMPER
372	1	-	19XB04002701	> WIRE HARNESS ASY (15 WIRE)

Itm#	Qty	Rec	Part Number	Description
373	1	-	19XB04002401	> WIRE HARNESS ASY (6 WIRE)
374	1	-	19XB04003301	> RESISTOR WIRE ASSEMBLY (PSIO) includes
375	3	-	HT21AZ110	> > RESISTOR (10K,1/2 W)
376	3	-	19XB660003	TRANSDUCER CABLE (CLR/COND/OIL)
377	1	-	19EX04001301	SENSOR CABLE ASY (COMPR DISCH)
378	1	-	19EX04001302	SENSOR CABLE ASSY (OIL SUMP TEMP)
379	1	-	HY84EE003	CONNECTOR PLUG(3 PIN)(PSIO)TOP SIDE
380	1	-	HY84EE004	CONNECTOR PLUG(4 PIN)(PSIO)TOP SIDE
381	3	-	HY84EE021	CONNECTOR PLUG (18 PIN)(PSIO)
382	1	-	HY06MP106	CONNECTOR PLUG (6 PIN)(OPTIONS ONLY)
383	1	-	HK50AA006	MODULE (INPUT) (OPTIONS ONLY)
384	4	-	HH79NZ047	TEMPERATURE SENSOR (W/B NOZZLE)
385	3	-	HK05YZ007	PRESS TRANSDUCER (CLR/COND/OIL LINE)
386	1	-	HX06HZ050	SENSOR BOX COVER (THRUST/SHAFT MOVE)
387	1	-	19EX04002601	HI-DISCH PRESS CUTOUT
388	6	-	HW60ZW250	STRAIN RELIEF
389A	1	-	19EX04000201	POWER PANEL ASY (BASIC)
389B	1	-	19EX04000202	POWER PANEL ASY (OPTIONS) includes
390	1	-	19EX04001001	> ENCLOSURE
391A	2	-	HT01BD113	> TRANSFORMER (21V)(BASIC PANEL)(T
391B	1	-	HT01BD113	> TRANSFORMER (21V)(OPTIONS)(T1,T4
392	1	-	HT01AW235	> TRANSFORMER (24 V)(T2,T3)
393	2	-	HN53CD024	> CONTACTOR (3 POLE) (OIL HTR/PUMP
394	1	-	HK06UB011	> DIFF. PRESSURE SWITCH
395	1	-	19XB05000401	> BARRIER
396	1	-	19XB05002301	> TERMINAL BLOCK
397	1	-	HR67ZZ125	> VOLT SELECTOR SWITCH (115/230 V)
398	1	-	19XB04002501	> WIRE HARNESS ASY (15 WIRE)
399	1	-	HY90HR001	> GROUND LUG
400A	1	-	19EA411113	PUMPDOWN ASSEMBLY (208-3-60)
400B	1	-	19EA421113	PUMPDOWN ASSEMBLY (230-3-60)
400C	1	-	19EA431113	PUMPDOWN ASSEMBLY (400/460-3-50/60)
400D	1	-	19EA461113	PUMPDOWN ASSEMBLY (575-3-60) includes
401A	1	-	06DM8086GC3250	> COMPRESSOR ASSEMBLY (208/230-3-60)
401B	1	-	06DM8086GC3650	> COMPRESSOR ASSEMBLY (460-3-60)
401C	1	-	06DM8086GC3150	> COMPRESSOR ASSEMBLY (575-3-60)
402	1	-	6D43172	> GASKET SET
403	1	-	NO LONGER AVAILABLE	> VALVE PLATE PACKAGE (1-13/16" BORE) includes
404	1	-	NO LONGER AVAILABLE	> VALVE PLATE ASY
405	2	-	6D751062	> > DISCHARGE VALVE
406	2	-	6D751072	> > DISCHARGE VALVE STOP
407	2	-	6D401021	> > SUCTION VALVE SPRING
408	2	-	6D451072	> > SUCTION VALVE
409	1	-	6D401073	> > GASKET,VALVE PLATE
410	1	-	05GA502213	> > GASKET,CYLINDER
411	1	-	06DA660120	> VALVE PLATE PACKAGE (2" BORE) includes
412	1	-	06DA404674	> > VALVE PLATE ASY.
413	1	-	05DA500153	> > GASKET,VALVE PLATE
414	1	-	05GA502213	> > GASKET,CYLINDER HEAD (PLAIN)
415	1	-	05GA502223	> > GASKET,CYLINDER HEAD (S.C.O.U.)
416	2	-	06DA502903	> > SUCTION VALVE
417	2	-	6D401021	> > SPRING,SUCTION VALVE POSITIONING
418	1	-	05GA502173	> > GASKET,CYLINDER HEAD (CENTER BANK)
419	1	-	06DA502923	> > GASKET,VALVE PLATE (LESS I PORT)
420	1	-	7J16032	> > DOWEL PIN
421	2	-	6D68962	> PISTON & PIN PACKAGE
422	2	-	5D401372	> ECENTRIC STRAP
423	2	-	AU50CP355	> COMPRESSION RING
424	1	-	06DA660060	> BEARING HEAD ASSEMBLY

Itm#	Qty	Rec	Part Number	Description
425	1	-	6D40103	> OIL FILTER ASSEMBLY
426	1	-	06DA660060	> SERVICE VALVE PKG. (DISCHARGE) includes
427	1	-	6D231421	> > GASKET
428	1	-	5F20660002	> SERVICE VALVE PKG. (SUCTION) includes
429	1	-	6D231421	> > GASKET
430	1	-	6D21104060	> CONDENSER ASSEMBLY includes
431	2	-	7F0132	> > TRY COCK ASSY
432	1	-	EP12BH211	> > LIQUID VALVE
433	1	-	HN68JX003	COMPR OVERLOAD(30A)(FURNAS-MAN RESET)
434A	3	-	HN71JC050	OVERLOAD HEATER (208V)
434B	3	-	HN71JC049	OVERLOAD HEATER (230V)
434C	3	-	HN71JC036	OVERLOAD HEATER (460V)
434D	3	-	HN71JC031	OVERLOAD HEATER (575V)
435	1	-	07DA500002	CONTROL BOX COVER
436	1	-	19EA41588	CONTROL BOX ASSEMBLY includes
437	1	-	HY84EG017	> TERMINAL BLOCK
438	1	-	HN53CD115	> CONTACTOR
439	1	-	HK01UA181	> PRESSURESTAT
440	1	-	HR53ZA035	> TOGGLE SWITCH
441	1	-	HKP-HH	> FUSE HOLDER
442	1	-	AGC3	> FUSE (3 AMP)
443	1	-	KA56XM040	> GROMMET
444	1	-	EB51LP121	SAFETY HEAD
445	1	-	KH31LZ008	OIL SEPERATOR
446	1	-	KY31LY003LA	GASKET,OIL SEPERATOR
447	4	-	A-14841	VALVE,DIAPHRAGM (1/2" ODS)
448	1	-	EP23LA211	VALVE,ANGLE
449	4	-	AU51YA003	GASKET,CAPSCREW 5/16"
450	1	-	DD24FA151	GASKET,FLARE 1/2"
451	1	-	19XL680001	O-RING LUBRICANT
452	1	-	19XL680002	GASKET SEALANT
453	1	-	PP23BB006	OIL,MINERAL (5 GAL)
454	1	-	PP23BZ103005	OIL,SYNTHETIC (5 GAL) (R134A ONLY)
455	1	-	PH23GH017	PAINT (GREEN) (SPRAY CAN)
456	1	-	PH23GH022	PAINT (GRAY) (SPRAY CAN)