



**OPEN DRIVE CENTRIFUGAL
LIQUID CHILLER
R134A W/PIC**

17EX
SIZE: 005 - 005
SERIES: 0

SERVICE PARTS GUIDE INDEX

GRAPHICS CATALOG NUMBER: RCD-3517-021 REV.

PAGE:

MODEL NUMBER SIGNIFICANCE CHART AND NOTES 1 & 2

UNIT ASSEMBLY GRAPHICS 3 - 17

PARTS LIST CATALOG NUMBER: RCD-3517-021 REV.

PAGE:

17EX5 1 - 8

ATTENTION: PLEASE FILE THIS INFORMATION AS A FINAL RELEASE

.....Attached you will find information that is released as a two part Service Parts Guide. A Service Parts Guide consists of "Graphics Catalog" and "Parts List Catalog". The common link between these two types of catalogs is the CATALOG NUMBER ONLY!! The revision block that follows the Catalog No. is used as a way to update one or both parts of the Service Parts Guide. This Index Page is a reference to let the Service Parts Center know what has been released on the model listed above.

Information about This Release 2/1/96

Graphics Catalog	
Catalog No: RCD-3517-021	Rev. <input type="text"/>
Supersedes: NEW	Rev. <input type="text"/>

INDEX PAGE
Litho in U.S.A



**OPEN DRIVE CENTRIFUGAL
LIQUID CHILLER
R134A W/PIC**

17EX

17EX FRAME SIZE #5 SERVICE PARTS

HOW TO USE THIS CATALOG

- 1. THIS CATALOG PRESENTS THE MOST COMMONLY USED SPECIFIED PARTS FOR THE STANDARD 17EX CENTRIFUGAL REFRIGERATION MACHINE AND IS NOT APPLICABLE TO ANY SPECIAL ORDER MACHINES. (CONTACT CARRIER WITH MACHINE SERIAL NUMBER FOR ANY SPECIAL ORDER UNIT PARTS.**

- 2. TO LOCATE REQUIRED PART REFER TO THE UNIT ILLUSTRATIONS THAT FOLLOW IN THIS CATALOG TO OBTAIN THE ITEM NUMBER THEN REFER TO THE PARTS LISTING FOR THE DESCRIPTION, QUANTITY, AND PART NUMBER OF REQUIRED PART.**

- 3. OCCASIONALLY DUE TO LIMITATIONS OF ILLUSTRATIONS USED, A PART MAY NOT BE ILLUSTRATED, THESE PARTS ARE IDENTIFIED BY "N" IN THE COLUMN NEXT TO THE ITEM NUMBER.**

- 4. THE FOLLOWING PARTS ARE NOT LISTED IN THIS CATALOG.**
 - A. IMPELLERS, SHROUDS, DIFFUSERS**
 - B. COMPRESSOR MOTOR**
 - C. EVAPORATOR TUBE PART NUMBERS**
 - D. CONDENSER TUBE PART NUMBERS**

IF ANY OF THESE PARTS ARE REQUIRED, CONTACT YOUR CARRIER REPRESENTATIVE WITH THE MODEL AND SERIAL NUMBER OF YOUR MACHINE.

- 5. POSITIVE IDENTIFICATION OF YOUR MACHINE TO PROPERLY SELECT PARTS MAY BE DONE BY REFERRING TO THE MACHINE NAME PLATE. SEE SIGNIFICANCE CHART ON PAGE #2.**





OPEN DRIVE CENTRIFUGAL
LIQUID CHILLER
R134A W/PIC

17EX

MODEL NUMBER SIGNIFICANCE CHART

1 7 E X 4 8 5 7 5 3 3 D F A 6 6 2 -

MODEL

COOLER CODE
FR #45, FR #46, FR #47, FR #48
1ST. DIGIT= FRAME SIZE

CONDENSER CODE
FR #45, FR #46, FR #47, FR #55,
FR #56, FR #57
1ST. DIGIT = FRAME SIZE

GEAR CODE
A, B, C, OR D
SIZE GEARS

COMPRESSOR CODE
1ST. DIGIT = FRAME SIZE
2ND. DIGIT = SHROUD SIZE
3RD. DIGIT = IMP. NUMBER

OPEN MOTOR CODE
FA = 1250 HP, TYPE ODP
FB = 1500 HP,
FC = 1750 HP,
FD = 2000 HP,
GA = 1250 HP, TYPE WPI
GB = 1500 HP,
GC = 1750 HP,
GD = 2000 HP,
HA = 1250 HP, TYPE WPII
HB = 1500 HP,
HC = 1750 HP,
HD = 2000 HP,
JA = 1250 HP, TYPE TEWAC
JB = 1500 HP,
JC = 1750 HP,
JD = 2000 HP,

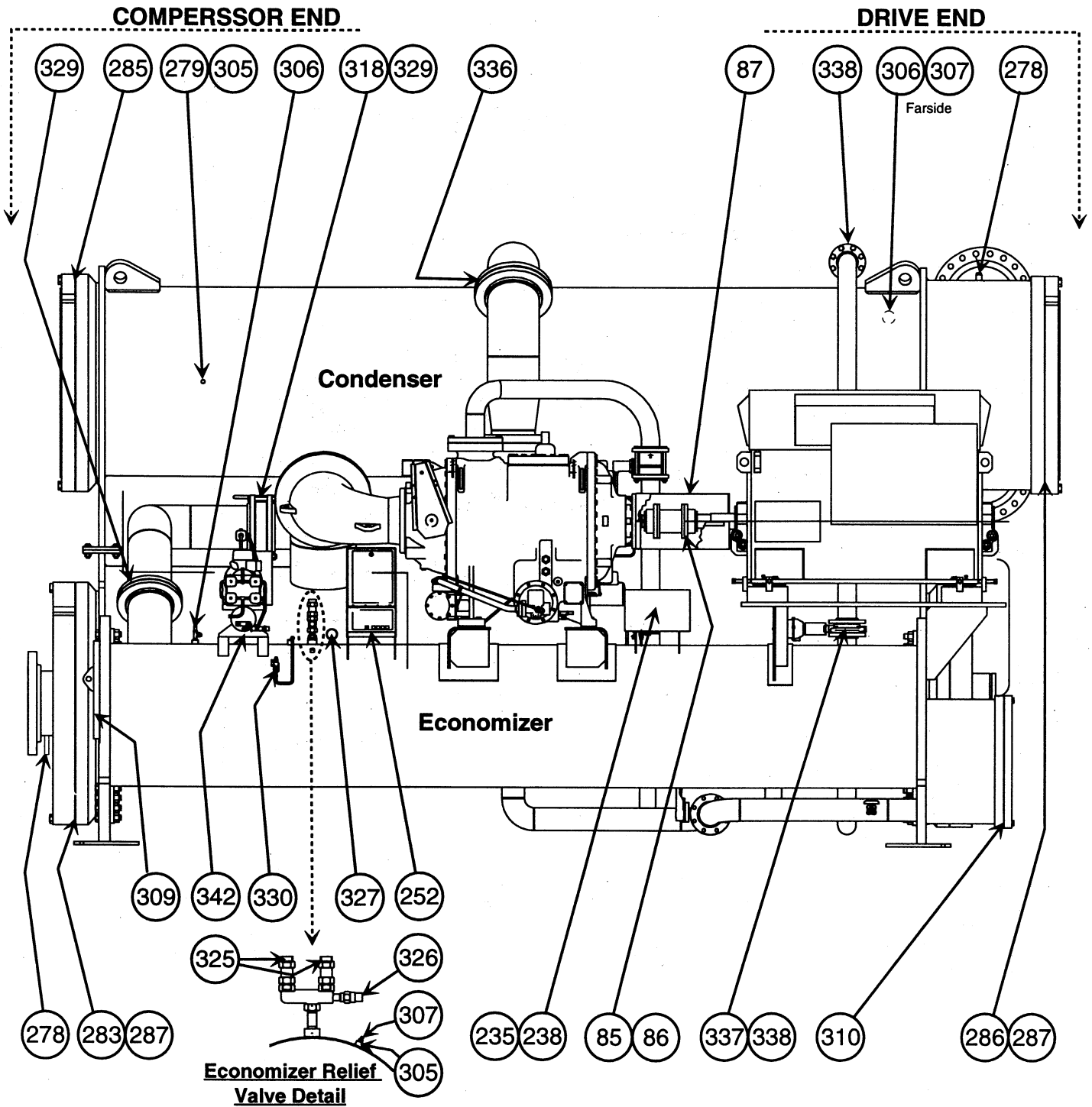
MOTOR VOLTAGE CODE
53 = 3000-3-50, 65 = 3300-3-60
54 = 3300-3-50, 66 = 4160-3-60
55 = 6300-3-50, 67 = 6900-3-60
64 = 2400-3-60

WATERBOX CODE
1 - MARINE COOLER / MARINE COND.
2 - MARINE COOLER / NIH COND.
3 - NIH COOLER / MARINE COND.
4 - NIH COOLER / NIH COND.

SPECIAL ORDER CODE
- = STANDARD UNIT
S = SPECIAL ORDER

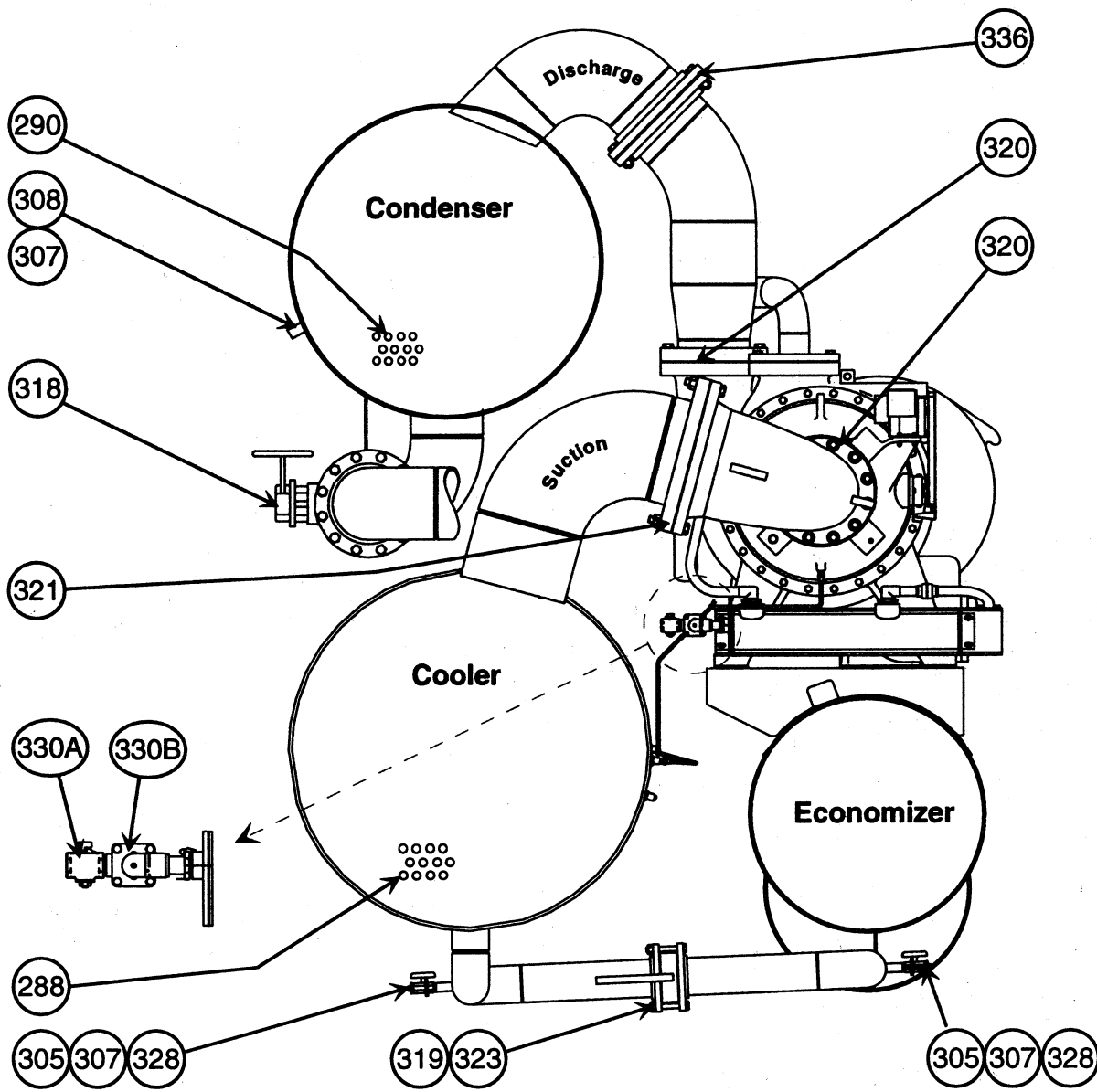
**OPEN DRIVE CENTRIFUGAL
LIQUID CHILLER
R134A W/PIC**

17EX



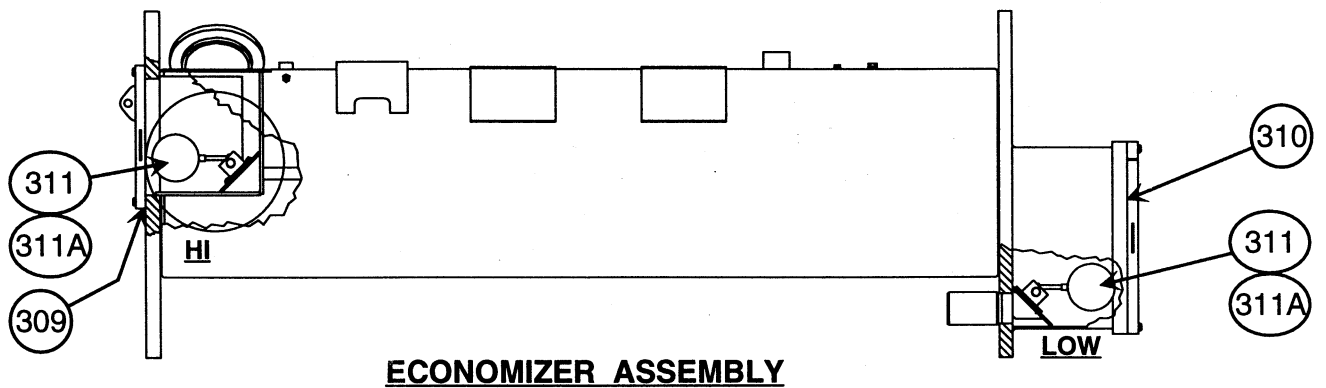
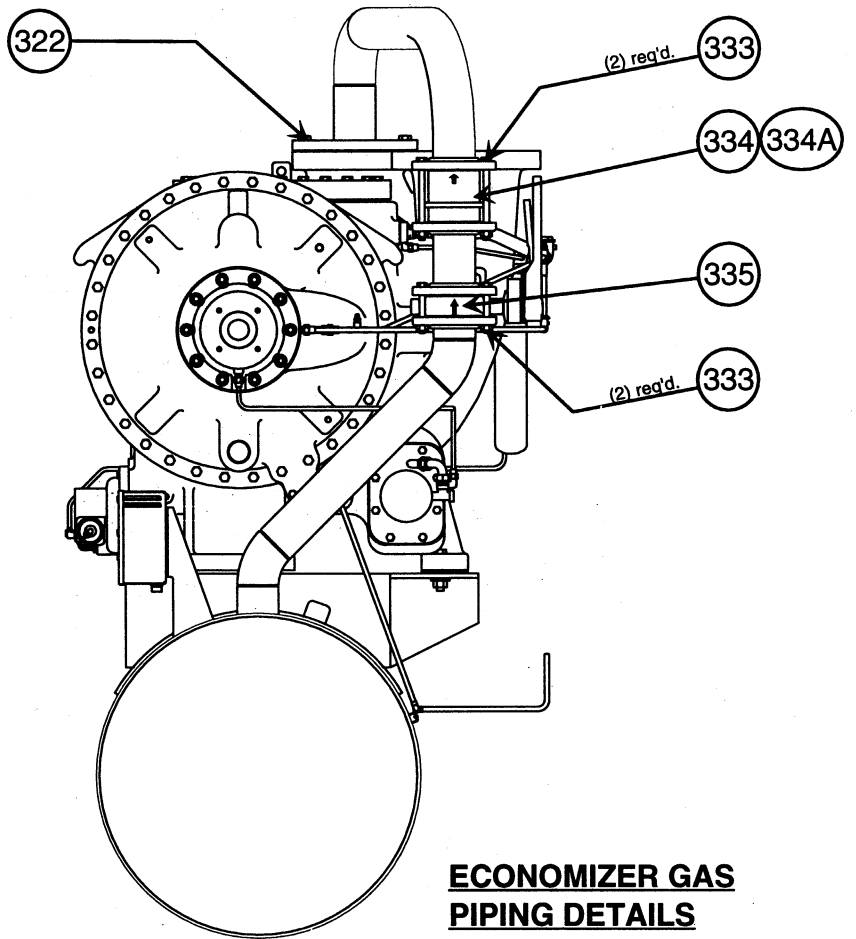
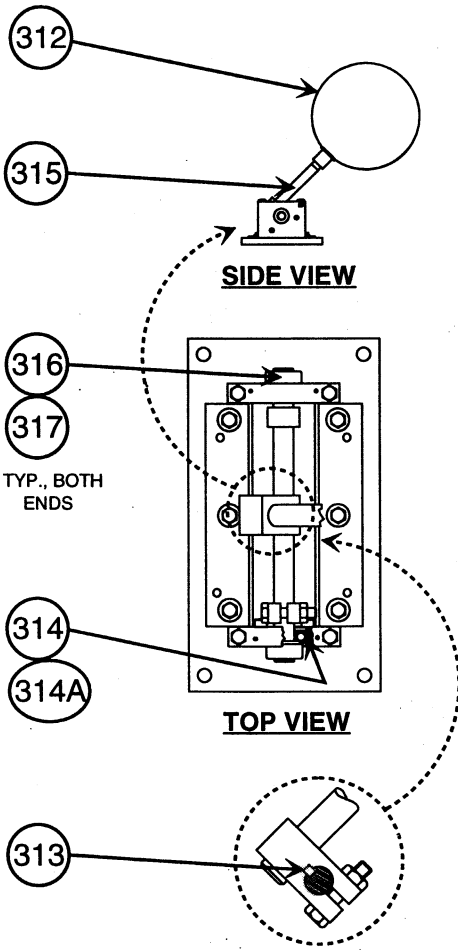
MACHINE ASSEMBLY, SIDE VIEW





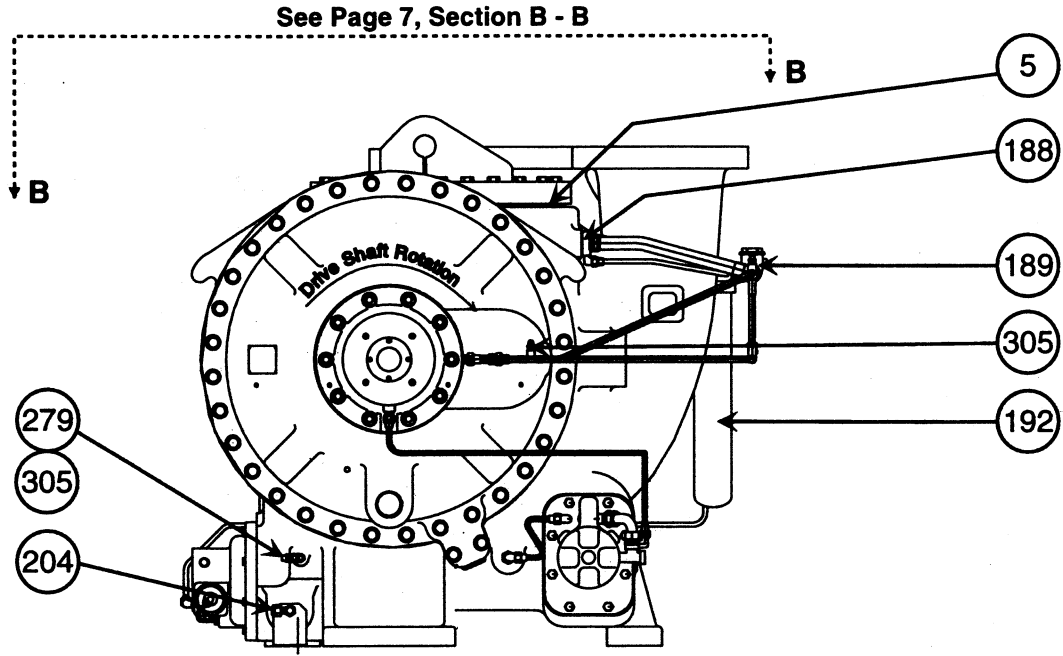
MACHINE ASSEMBLY, END ASSEMBLY



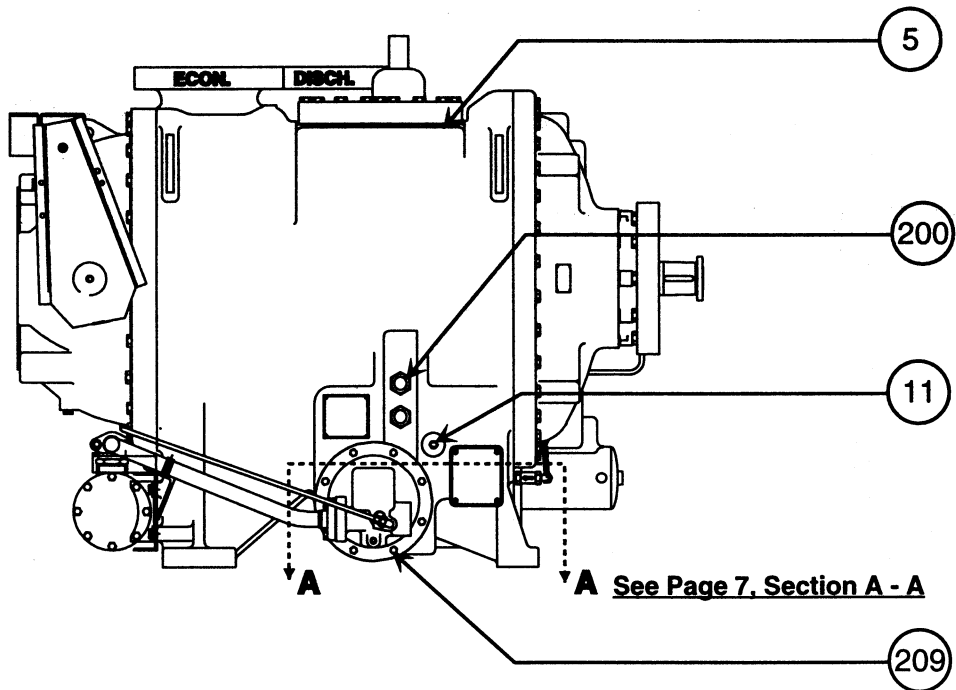


**OPEN DRIVE CENTRIFUGAL
LIQUID CHILLER
R134A W/PIC**

17EX



COMPRESSOR ASSEMBLY, DRIVE END

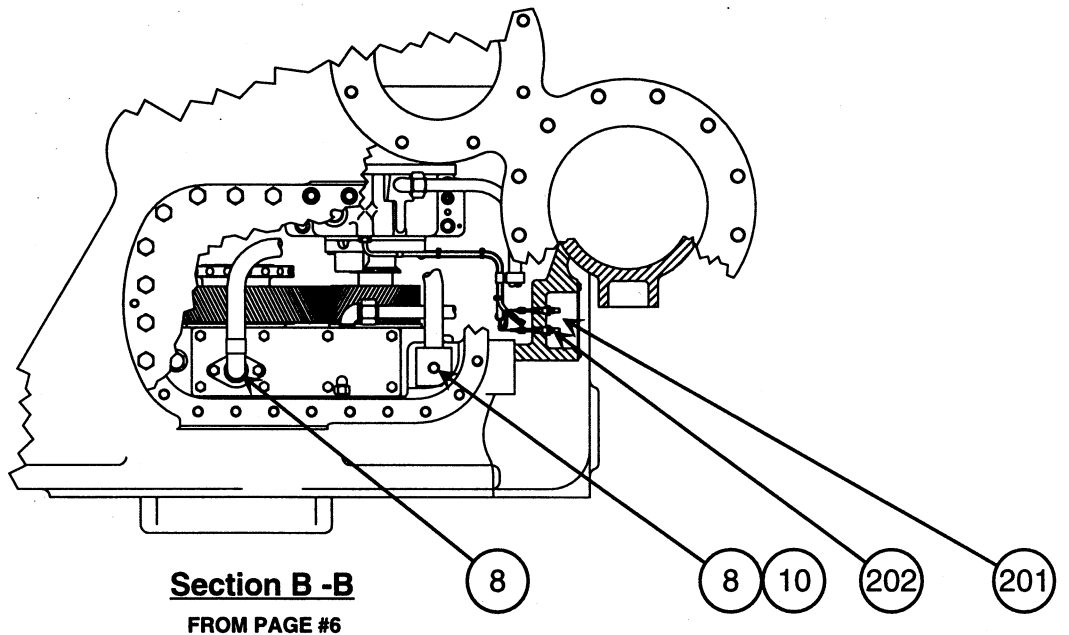
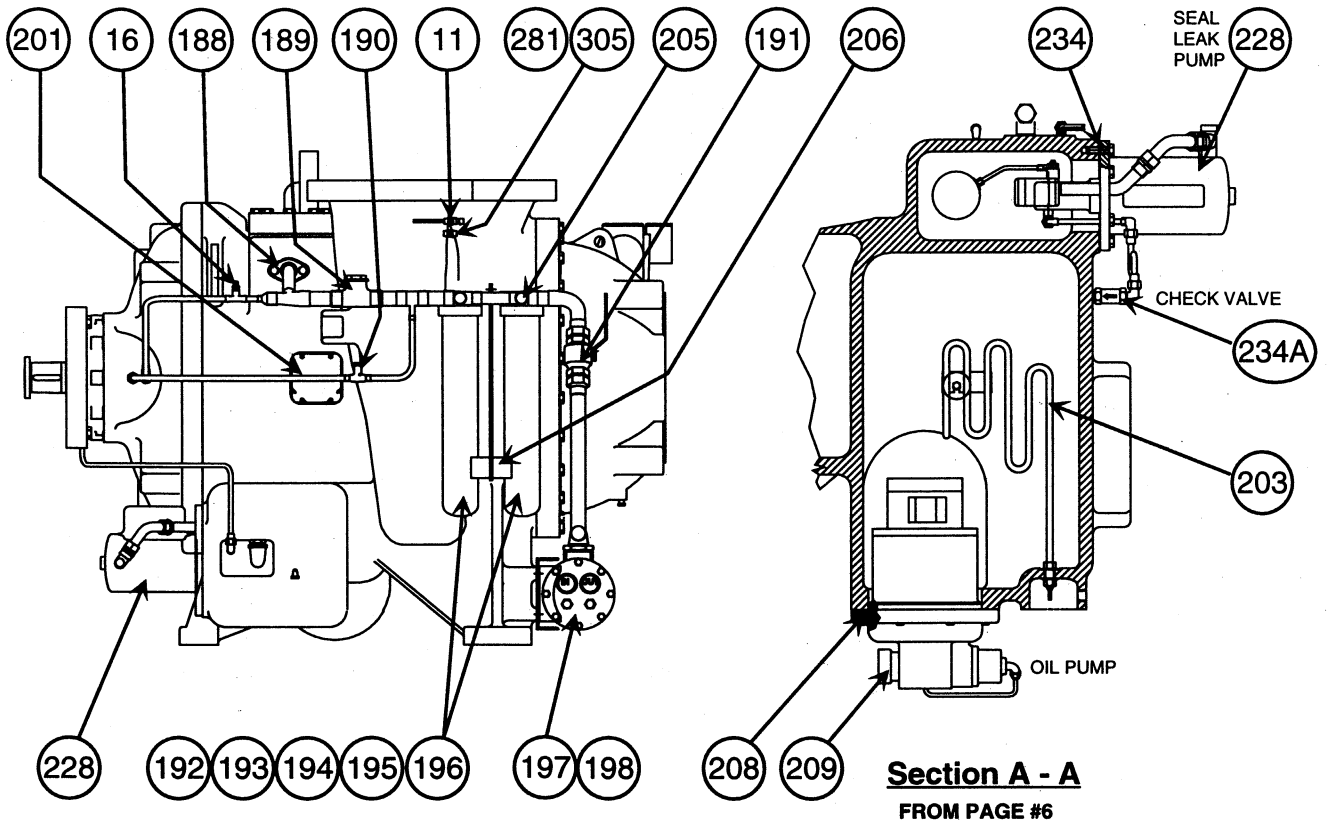


COMPRESSOR ASSEMBLY, SIDE VIEW



**OPEN DRIVE CENTRIFUGAL
LIQUID CHILLER
R134A W/PIC**

17EX



COMPRESSOR ASSEMBLY

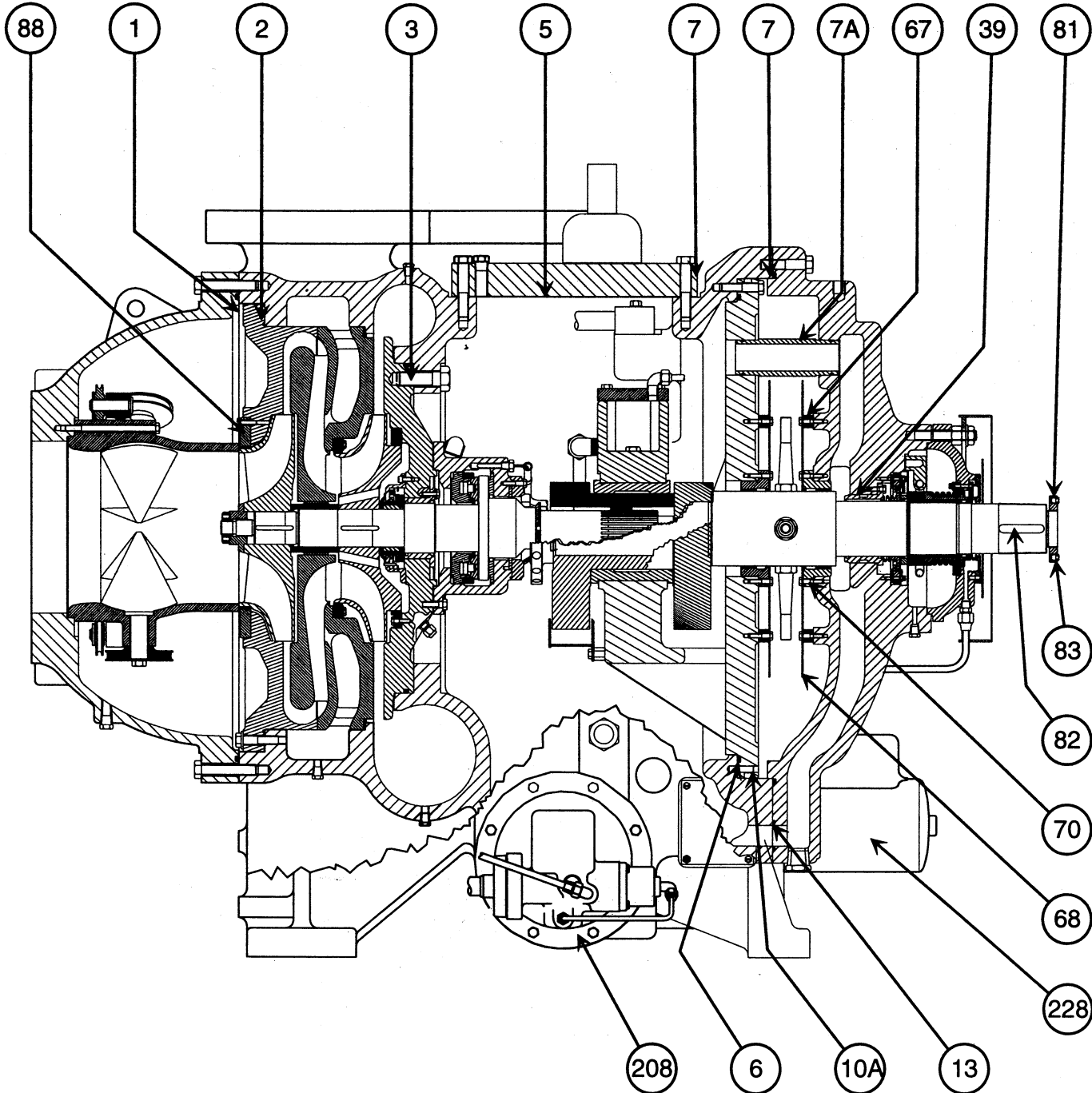
Graphics Catalog
Catalog No: RCD-3517-021
Supersedes: NEW

Rev.
Rev.

Graphics Page: 7
Litho in U.S.A

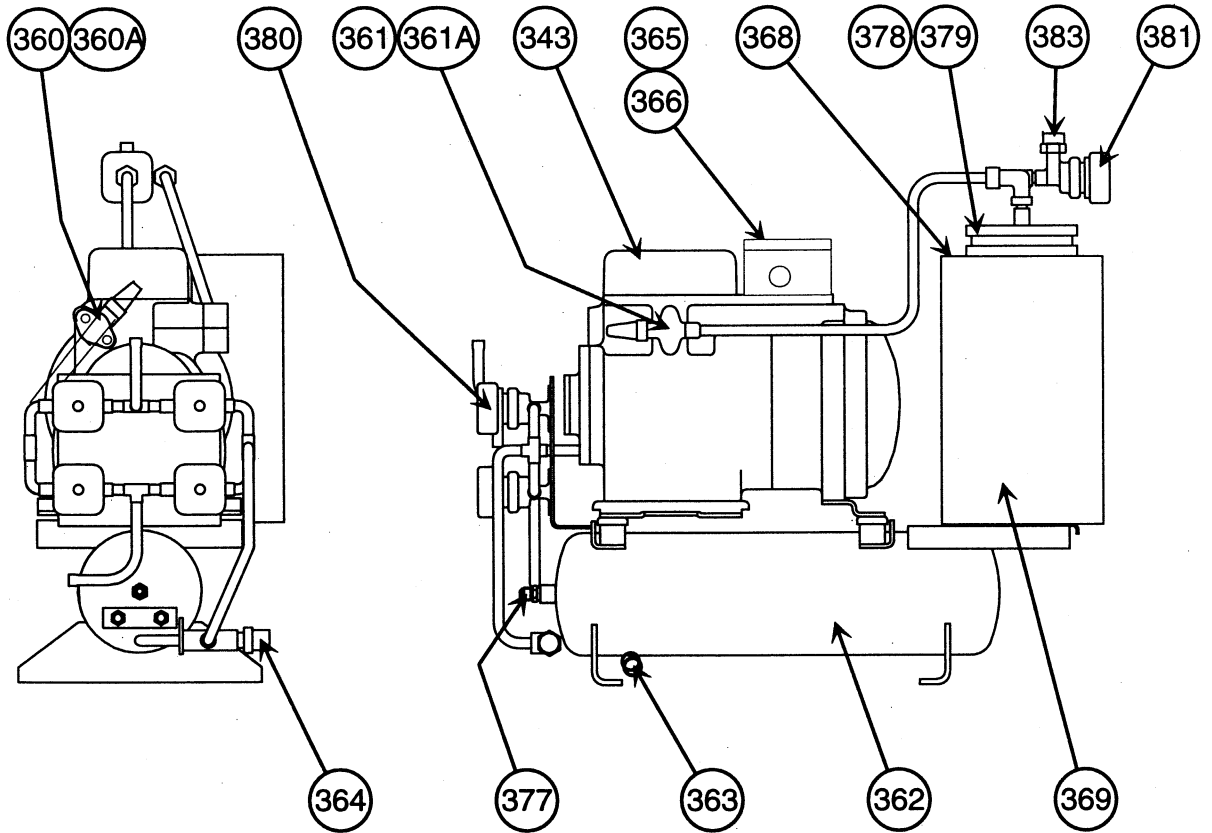
Note: See "Catalog Notes" on last page for explanation of symbolism.



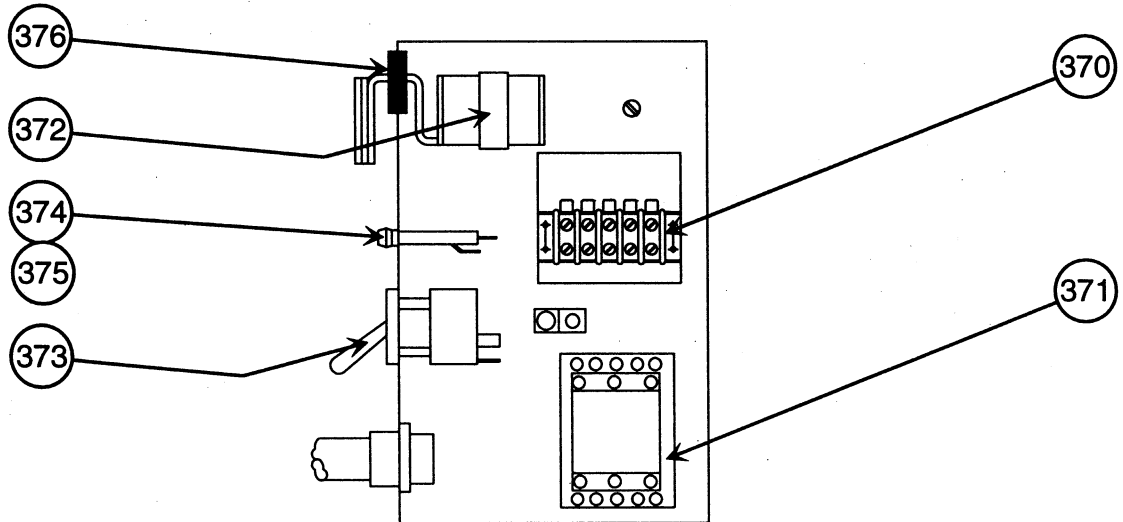


COMPRESSOR ASSEMBLY DETAIL

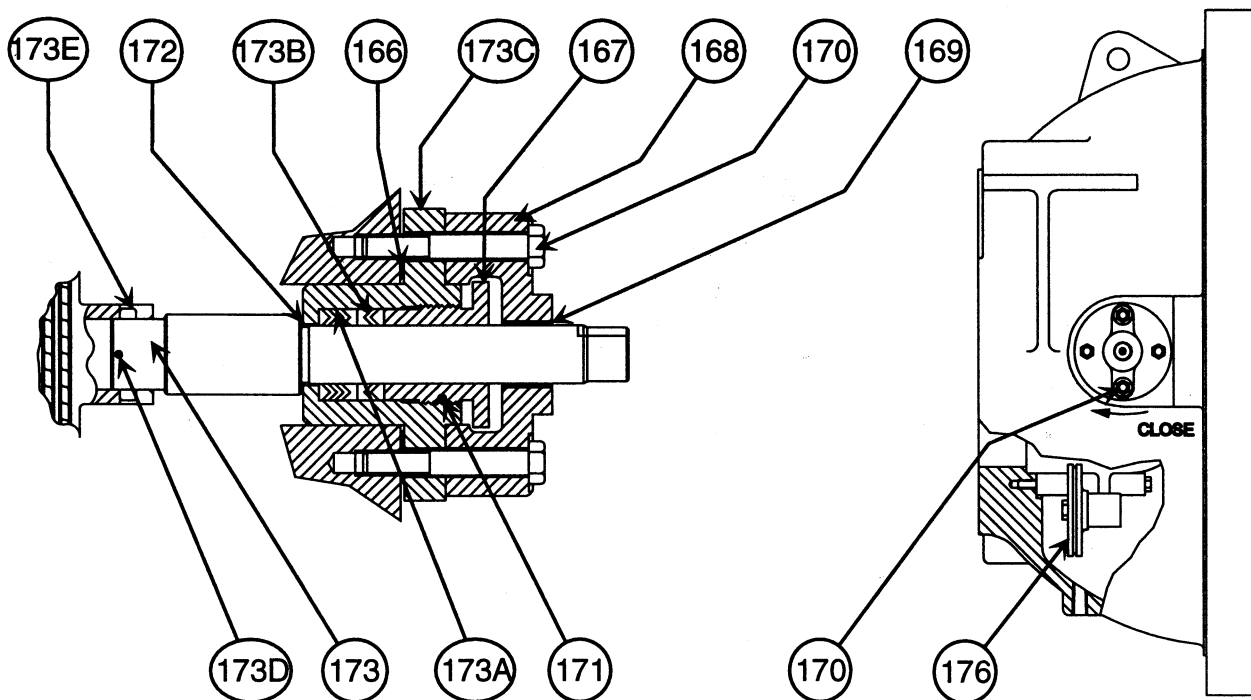
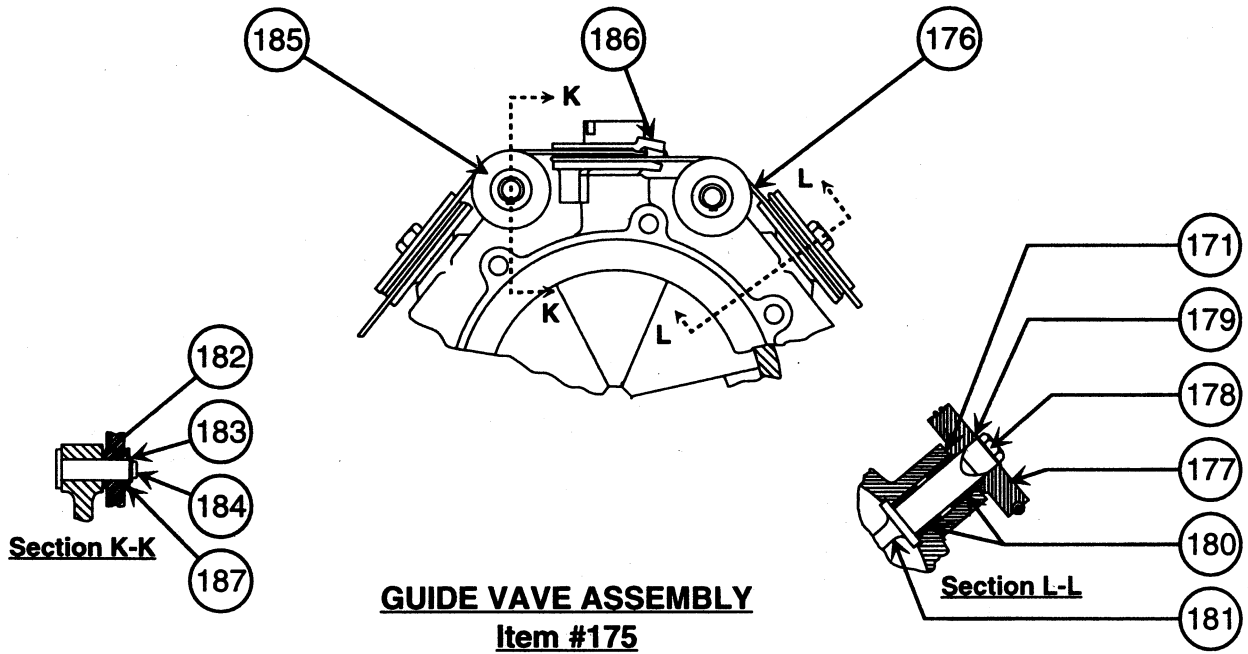


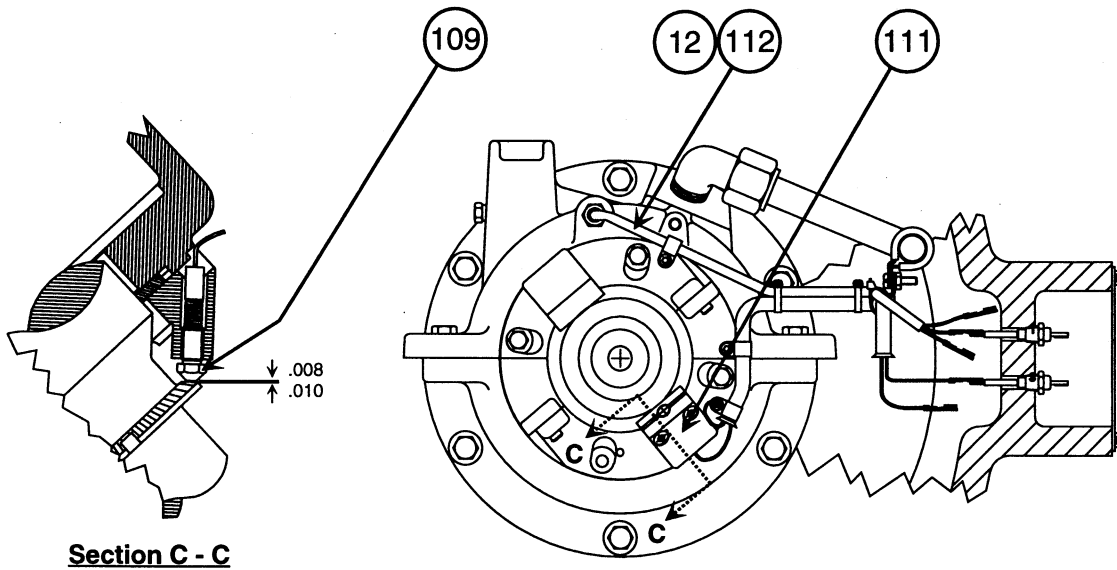
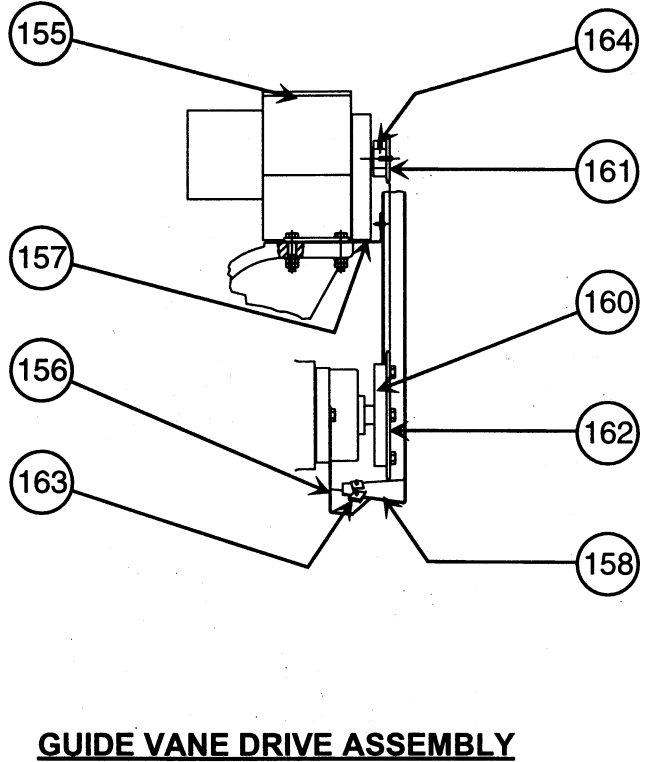
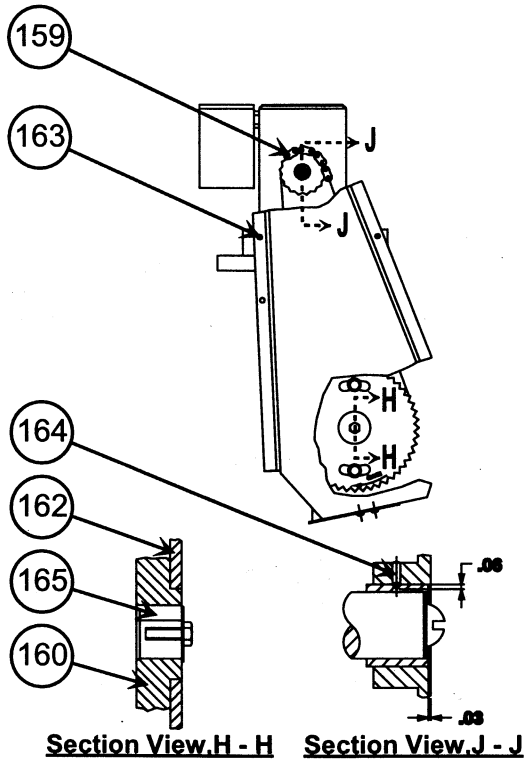


PUMP DOWN ASSEMBLY, ITEM #342



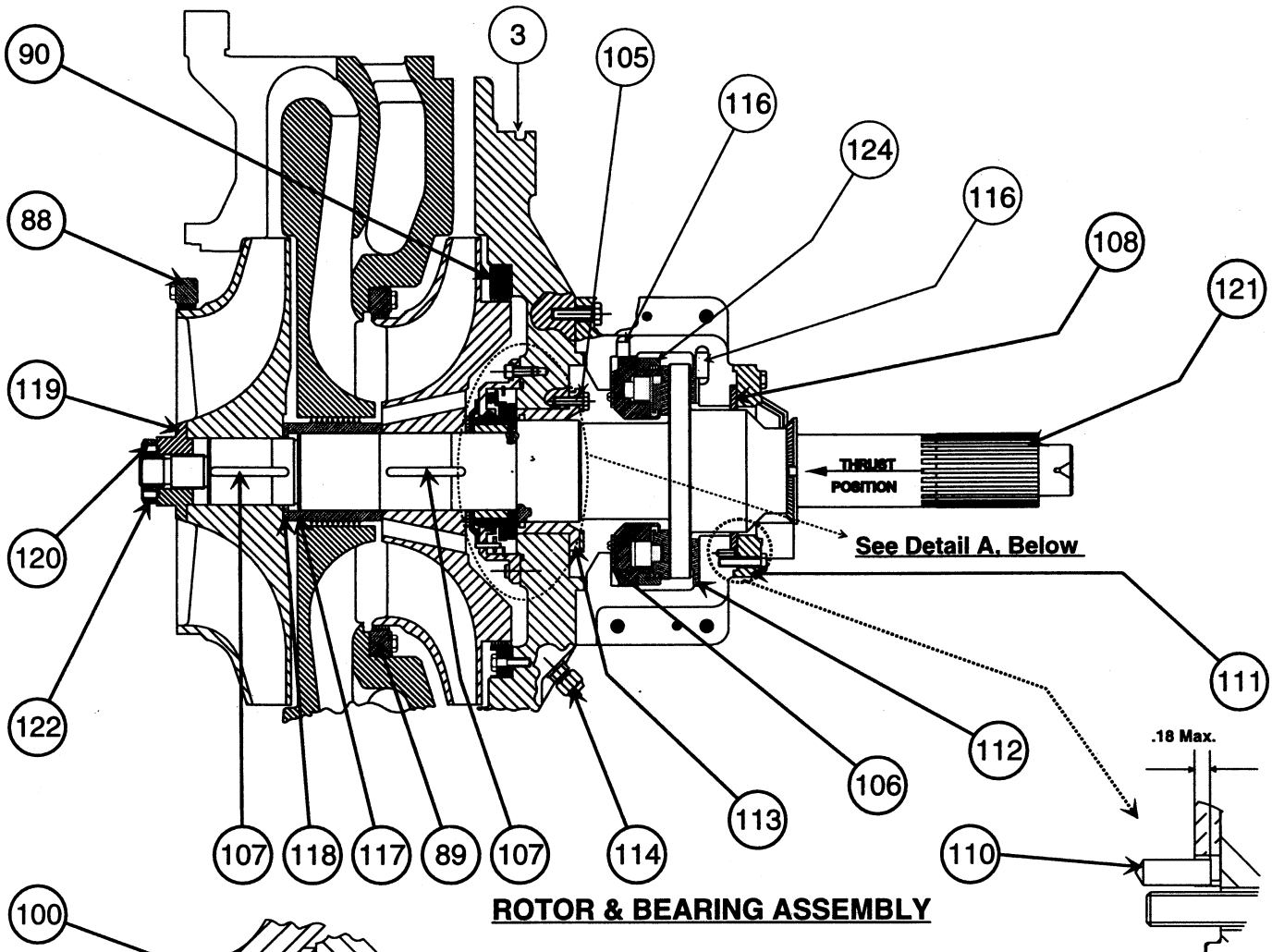
PUMP DOWN CONTROL BOX, ITEM #369



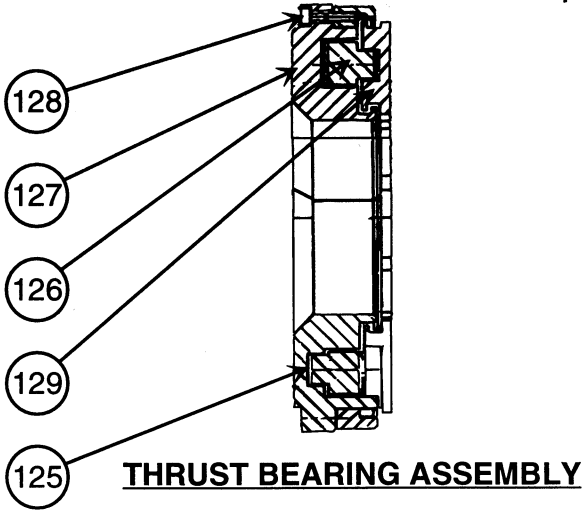
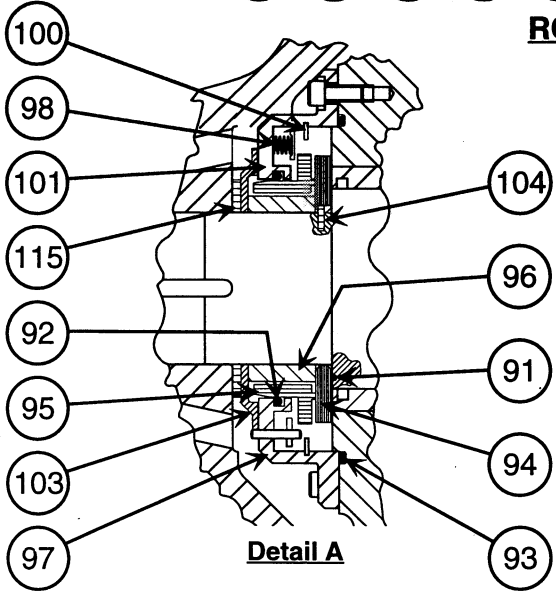


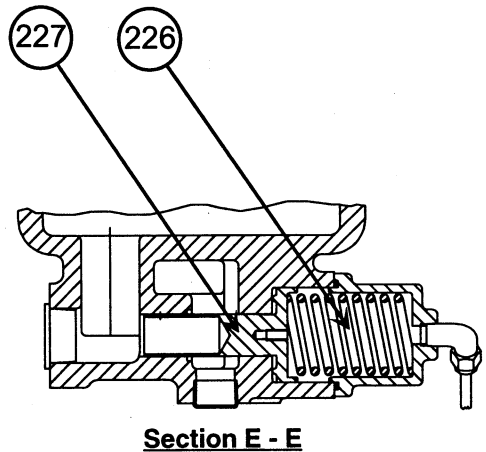
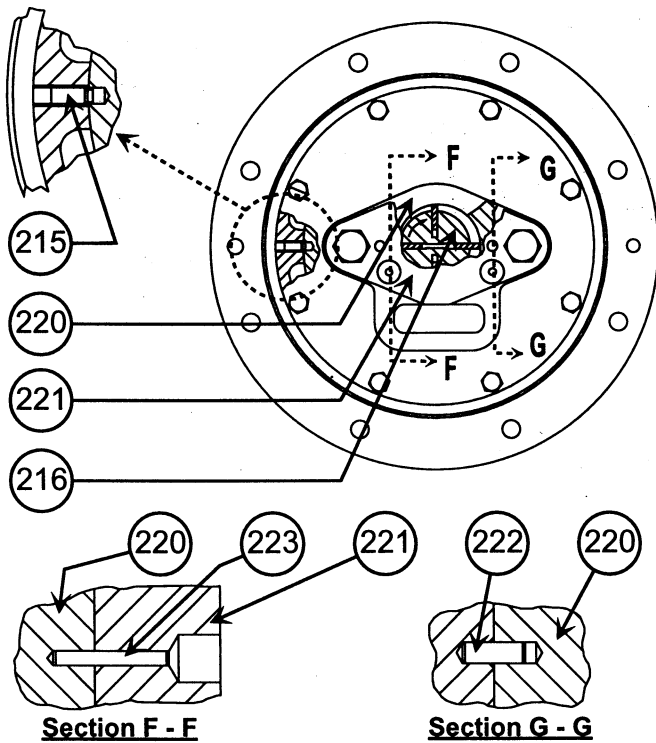
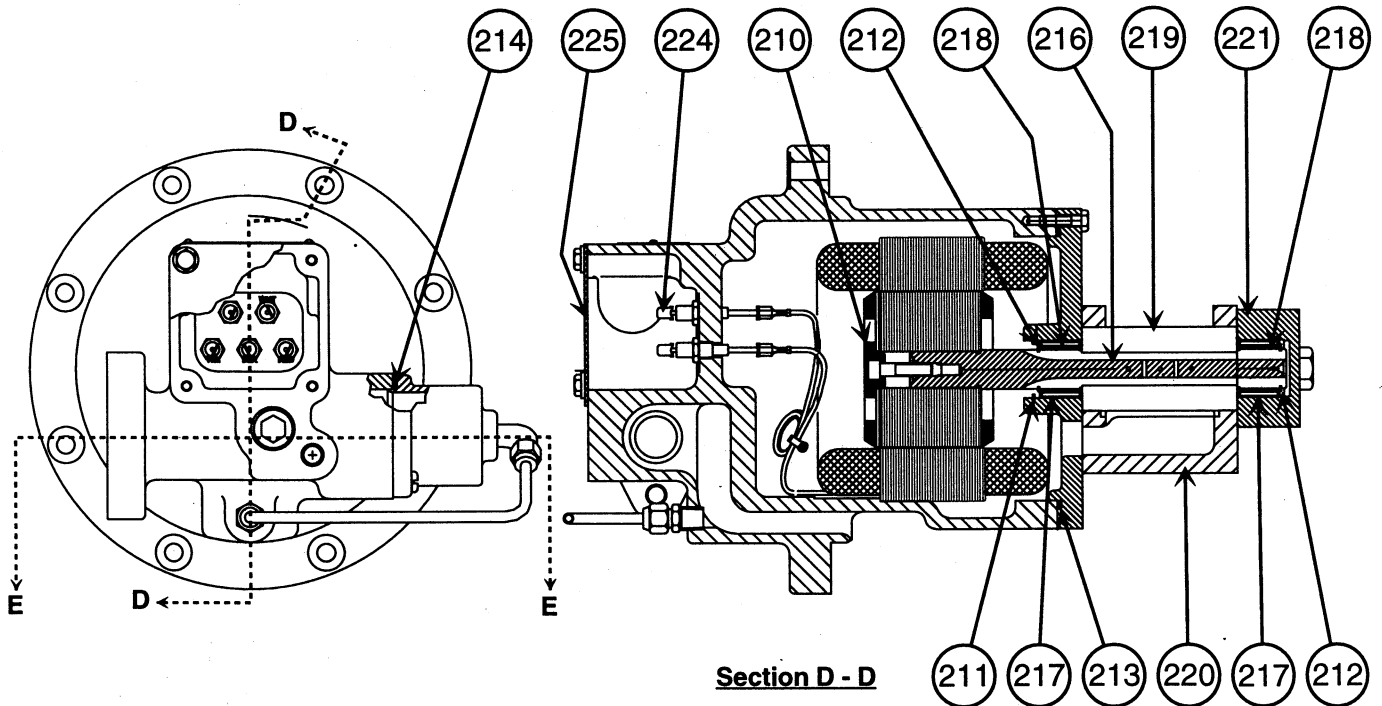
ROTOR & BEARING ASSEMBLY



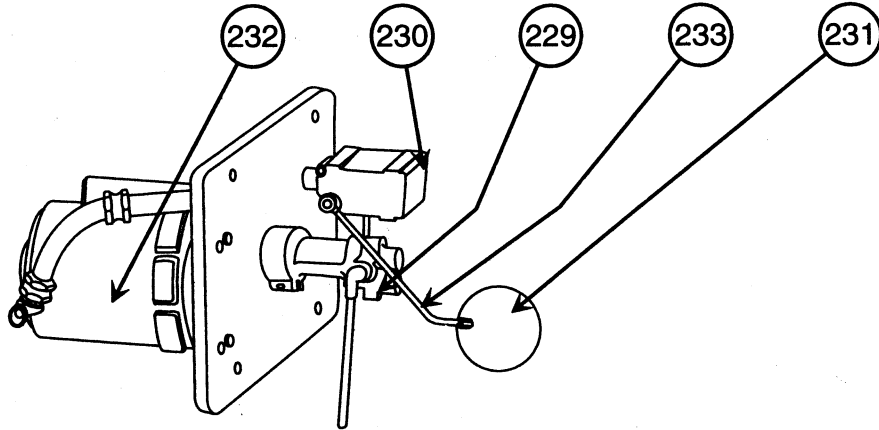


ROTOR & BEARING ASSEMBLY

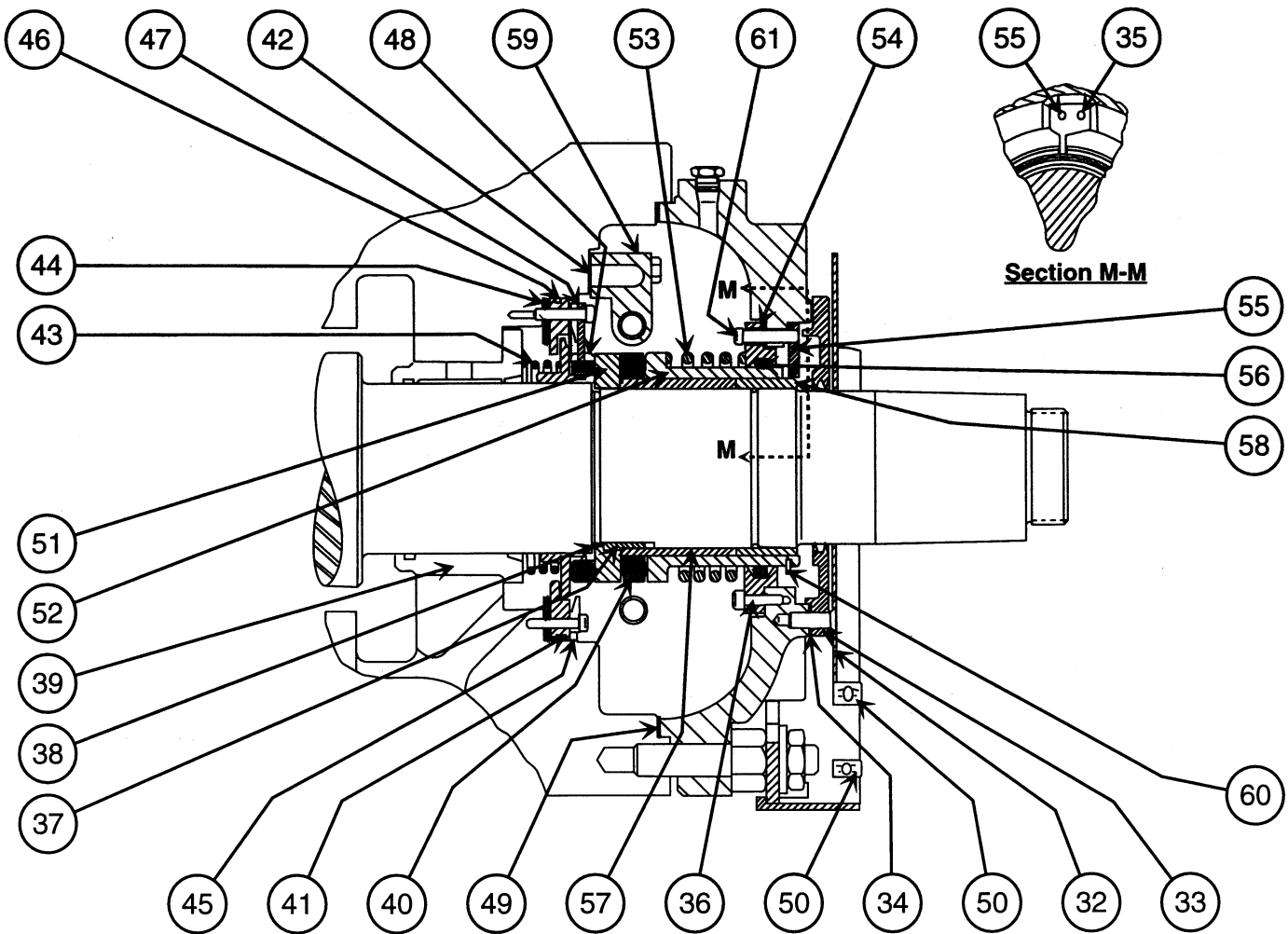




OIL PUMP AND MOTOR ASSEMBLY



SEAL LEAKAGE PUMP, Item #228



SEAL ARRANGEMENT

Graphics Catalog

Catalog No: RCD-3517-021

Supersedes: NEW

Note: See "Catalog Notes" on last page for explanation of symbolism.

Rev.

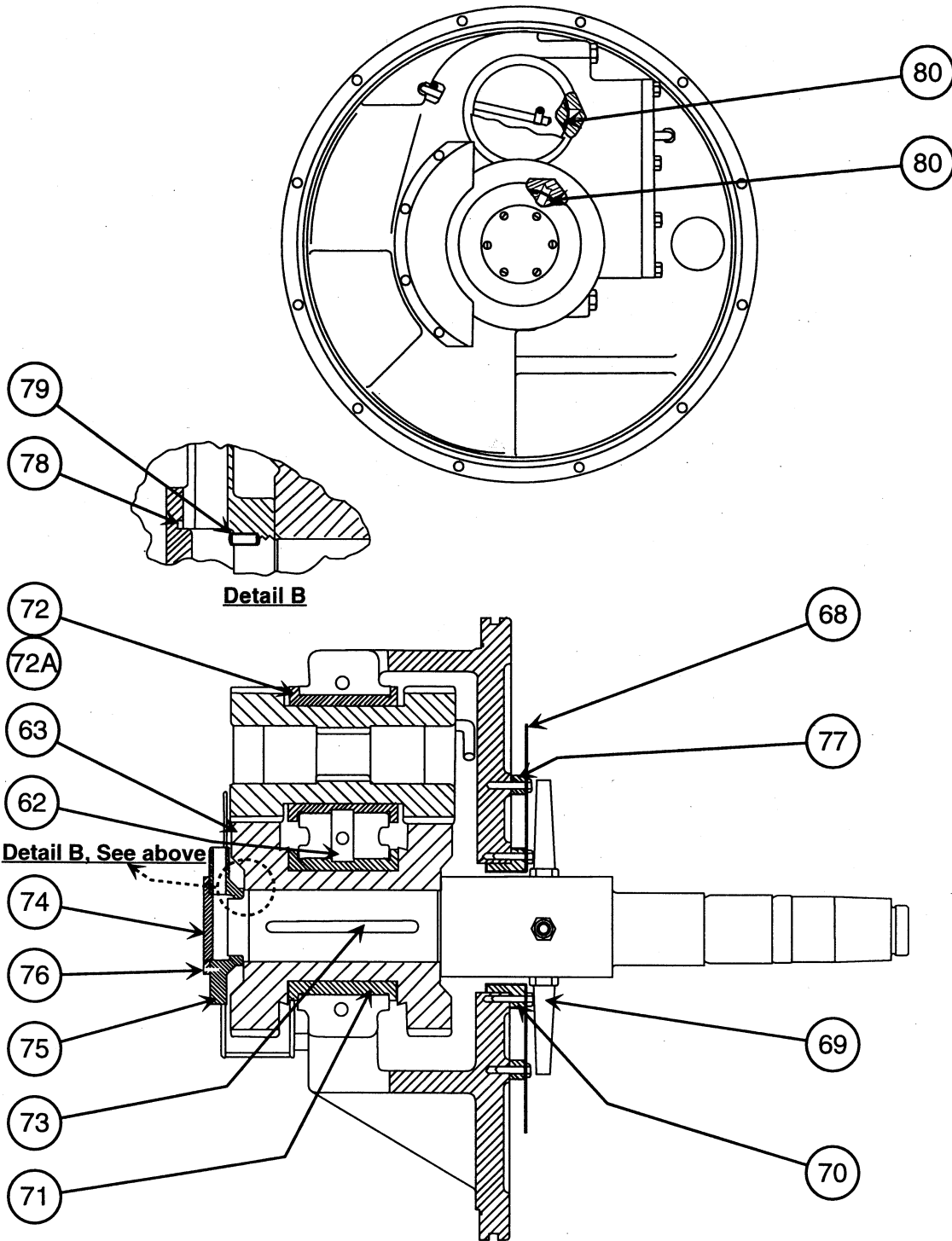
Rev.

Graphics Page: 14

Litho in U.S.A.



Electronic Graphics 17021014



TRANSMISSION ASSEMBLY

Graphics Catalog

Graphics Page: 15

Catalog No: RCD-3517-021

Rev.

Litho in U.S.A

Supersedes: NEW

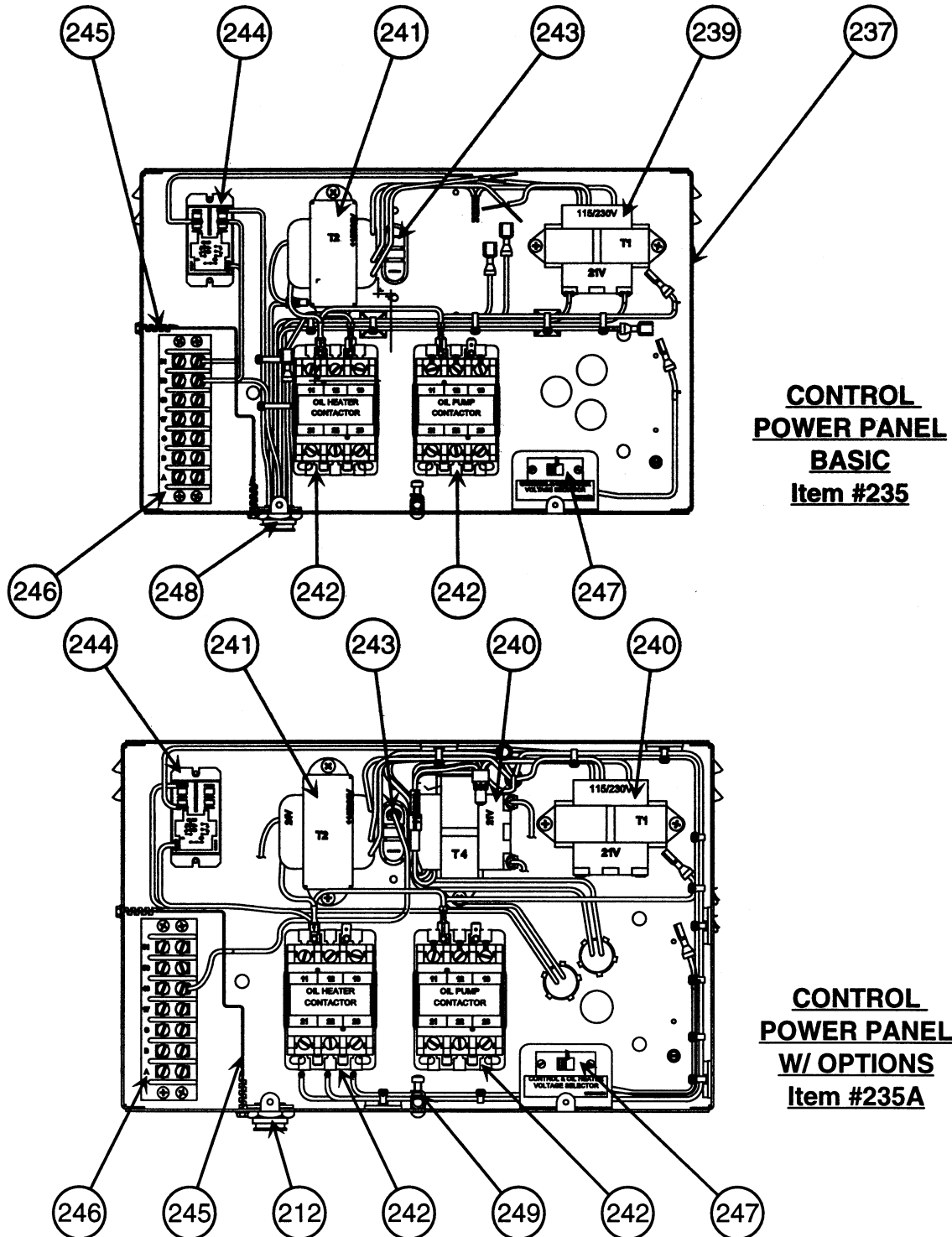
Rev.

Note: See "Catalog Notes" on last page for explanation of symbolism.



**OPEN DRIVE CENTRIFUGAL
LIQUID CHILLER
R134A W/PIC**

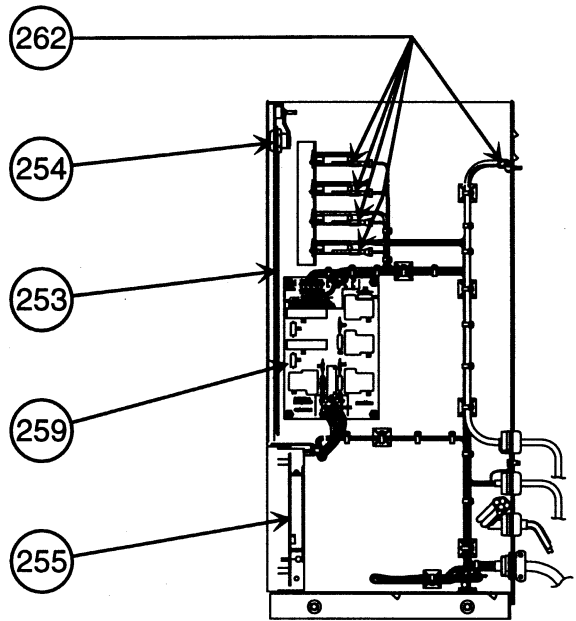
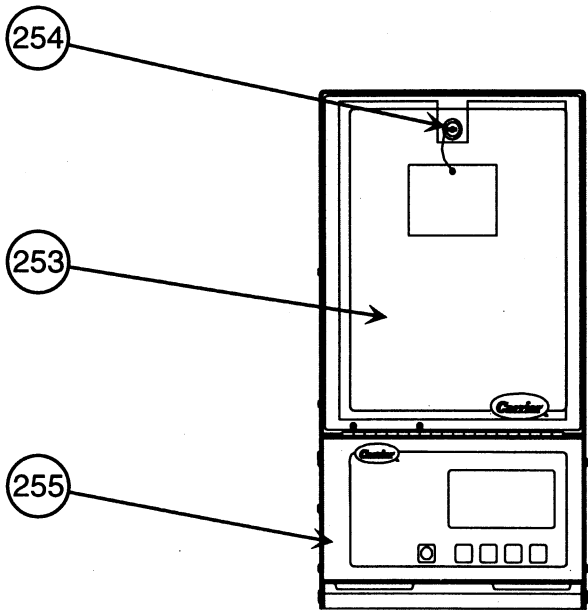
17EX



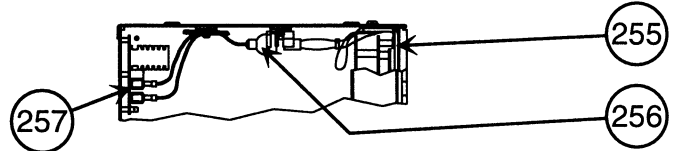
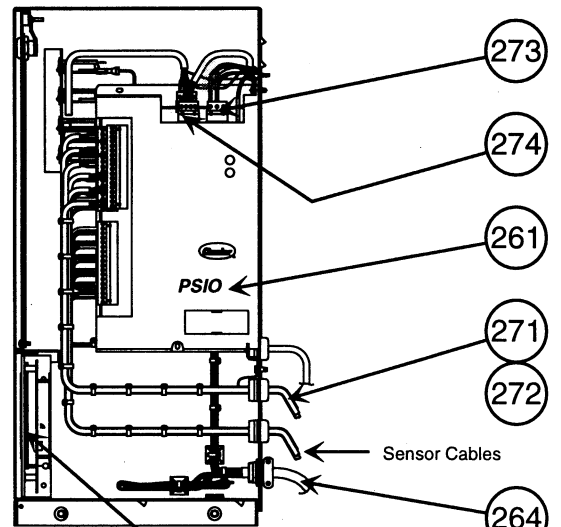
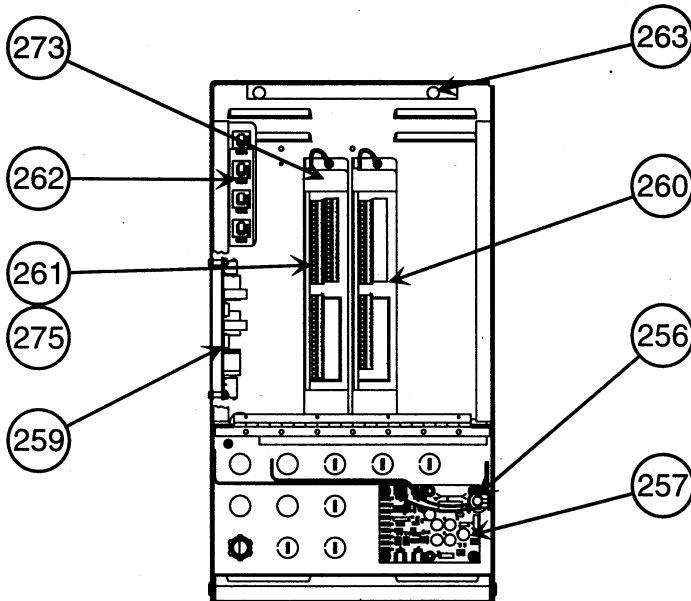
**CONTROL
POWER PANEL
BASIC
Item #235**

**CONTROL
POWER PANEL
W/ OPTIONS
Item #235A**





CONTROL PANEL, Items 252 or 252A





OPEN DRIVE CENTRIFUGAL
LIQUID CHILLER R134A

17EX

SIZE: 005 005
SERIES: 0

ITM	PART DESCRIPTION	17EX5			
		ALL VOLTAGES			
COMPRESSOR GROUP					
1	"O" RING, GUIDE VANE HOUSING	KK71GX267			
2	"O" RING, INTAKE WALL	KK71GX245			
3	"O" RING, DISCHARGE WALL	KK71PR075			
5	GASKET, INSPECTION COVER	17FA5021303LA			
6	"O" RING, TRANSMISSION HOUSING	KK71GX267			
7	"O" RING	KK71GX310			
7A	"O" RING (VENT TUBE)	(2) KK71GX016			
8	GASKET	DK29GA005LA			
9	"O" RING	KK71GZ018			
10	WASHER GASKET	AU51YA015			
10A	DOWEL PIN (TRAN HSG/COMPR SHELL)	AX23AT293			
11	SENSOR, TEMPERATURE (DISCH/OIL)	(2) HH79NZ047			
12	SENSOR, TEMP (BEARING) (PART OF # 123)	02EX54002401			
13	"O" RING	KK71GX015			
CONTACT SEAL & BEARING GROUP					
32	WINDAGE BAFFLE	17FA502112			
33	RING ASSEMBLY (OIL COLLECTOR)	17MA41433			
34	GASKET	17M4211811LA			
35	PIN, DOWEL	AX11AR062			
36	GASKET, PACKING GLAND	17FA5021082LA			
37	KEY, CONTACT RING	17M3262901			
38	QUAD RING	KK742W300			
39	BEARING, DRIVE SHAFT	17FA5021283			
40	RING, OUTER CARBON SEAL	17M523272			
41	RETAINING RING	17M523082			
42	GASKET, SPRAY HEADER	17M326451LA			
43	SPRING, SEAL GUIDE	17M526691			
44	SHIM	17FA5021253			
45	RETAINER, SHUT DOWN SEAL	17FA5021263			
46	"O" RING	KK71GZ065			
47	KEY, INNER CARBON RING	17M526681			
48	GUIDE RING ASSEMBLY	NSS			
	INCLUDES: ITEMS 48A - 48C				
48AN	GUIDE RING	17M522105			
48BN	DIAPHRAGM	17M523532			
48CN	INNER CARBON SEAL RING	17M523072			
49	GASKET	17M426591LA			
50	NUT, SPEED (TYPE "U")	(12) AS410F006			
51	CONTACT RING	17FA5023022			
52	CONTACT SLEEVE	17FA5021323			
53	SPRING, CONTACT SLEEVE	17M526711			
54	PACKING GLAND	17FA5021273			
55	KEY, ANTI-ROTATION	17M326501			
56	"O" RING	KK71GX038			
57	SHAFT SLEEVE	17M523182			
58	SHAFT NUT	17M623312			
59	LUBE TUBE & HEADER ASSY	17FA502133			
60	SNAP RING	17M526661			
61	STATIC SEAL	KK73GV010			
COMPRESSOR TRANSMISSION ASSEMBLY					
62	KEY, BEARING	17FA5021122			
63	GEAR & PINION PKG (A SIZE GEAR)	19FA660005			
63AN	GEAR & PINION PKG (B SIZE GEAR)	19FA660006			
63BN	GEAR & PINION PKG (C SIZE GEAR)	19FA660007			

PARTS LIST CATALOG

PARTS LIST PAGE: 001

CATALOG NO. : RCD-3517-021 REV.
SUPERSEDES : NEW REV.

NOTE: SEE "CATALOG NOTES" ON LAST PAGE FOR EXPLANATION OF SYMBOLISM.



OPEN DRIVE CENTRIFUGAL
LIQUID CHILLER R134A

17EX

SIZE: 005 005
SERIES: 0

ITM	PART DESCRIPTION	17EX5			
		ALL VOLTAGES			
COMPRESSOR TRANSMISSION ASSEMBLY					
65CN	GEAR & PINION PKG (D SIZE GEAR)		19FA660008		
67	SPACER	(6)	17FA4021072		
68	WINDAGE BAFFLE		17FA5021243		
69	NOZZLE	(4)	19EA411792		
70	SHAFT LABYRINTH		17FA5022094		
71	BEARING ASSY,BULL GEAR		17FA502304		
72	BEARING ASSY,PINION GEAR(A,B,C GEAR)		17FA502304		
72AN	BEARING ASSY,PINION GEAR(D GEAR)		17FA502374		
73	GEAR KEY	(2)	17FA5021252		
74	COVER,DEMISTER		19EA411152		
75	LOCKNUT,DEMISTER		19EA411063		
76	SCREW,MACHINE	(6)	AC26AA126		
77	SPACER	(6)	17FA4021072		
78	"O" RING,DEMISTOR COVER		KK71GX031A		
79	SET SCREW		AF11AC164		
80	"O" RING(PINION/GEAR BRG OIL SUPPLY)	(2)	KK71GX010		
81	LOCKNUT		17DA811942		
82	KEY,COUPLING	(2)	17MA411101		
83	SET SCREW	(2)	AE64FR166		
85	DRIVE COUPLING (2 1/2")		17EX54000201		
86	COUPLING GUARD HOUSING		17EX54000901		
87 N	COUPLING GREASE		17DK680001		
COMPRESSOR ROTOR & BEARING ASSEMBLY					
88	1ST STAGE LABYRINTH (A3 SHROUD)		19EA532034		
88AN	1ST STAGE LABYRINTH (A4 SHROUD)		19EA542034		
88BN	1ST STAGE LABYRINTH (A5 SHROUD)		19EA552034		
88CN	1ST STAGE LABYRINTH (A6 SHROUD)		19EA562034		
88DN	1ST STAGE LABYRINTH (A8 SHROUD)		19EA5822904		
88EN	1ST STAGE LABYRINTH (A9 SHROUD)		19EA5922904		
89	2ND STAGE LABYRINTH (A3 SHROUD)		19EA532044		
89AN	2ND STAGE LABYRINTH (A4 SHROUD)		19EA542044		
89BN	2ND STAGE LABYRINTH (A5 SHROUD)		19EA552044		
89CN	2ND STAGE LABYRINTH (A6 SHROUD)		19EA562044		
89DN	2ND STAGE LABYRINTH (A8 SHROUD)		17FA5823004		
89EN	2ND STAGE LABYRINTH (A9 SHROUD)		17FA5923004		
90	BAL PISTON LABY(A3 SHROUD)(7.60 DIA)		17FA5021333		
90AN	BAL PISTON LABY(A4 SHROUD)(7.60 DIA)		17FA5021333		
90BN	BAL PISTON LABY(A5 SHROUD)(9.08 DIA)		17FA5021353		
90CN	BAL PISTON LABY(A6 SHROUD)(9.08 DIA)		17FA5021353		
90DN	BAL PISTON LABY(A8 SHROUD)(8.50 DIA)		17FA5023104		
90EN	BAL PISTON LABY(A9 SHROUD)(8.50 DIA)		17FA5023104		
91	"O" RING		KK71GX024		
92	"O" RING		KK71GX031		
93	"O" RING,SEAL HOUSING		KK71G2051		
94	CONTACT SEAL		19EA511172		
95	CARBON SEAL RING		19E85121012		
96	SHAFT SLEEVE		19EA511092		
97	SEAL HOUSING ASSEMBLY		19E8512102		
	INCLUDES: ITEMS 98 - 101				
98	SPRING	(12)	19EA411291		
99	SPRING RETAINER		19EA511392		
100	RETAINING RING		AU46AR976		
101	SEAL HOUSING		19E8512103		
103	SLINGER RING		19EA511302		

PARTS LIST CATALOG

PARTS LIST PAGE: 002

CATALOG NO.: RCD-3517-021 REV.
SUPERSEDES : NEW REV.

NOTE: SEE "CATALOG NOTES" ON LAST PAGE FOR EXPLANATION OF SYMBOLISM.



OPEN DRIVE CENTRIFUGAL
LIQUID CHILLER R134A

17EX

SIZE: 005 005
SERIES: 0

ITM	PART DESCRIPTION	17EX5			
		ALL VOLTAGES			
COMPRESSOR ROTOR & BEARING ASSEMBLY					
104	DOWEL PIN		AX11AR037		
105	RETAINER, BEARING		17FA5021052		
106	SHIM, THRUST BEARING		17FA502213		
107	KEY	(6)	17FA5021362		
108	SEAL RING		19EA511862		
109	SHAFT DISPLACEMENT DETECTOR		19FA680006		
110	DRIVE PIN		AX27AB122		
111	MOUNTING RING ASSEMBLY		17FA502143		
112	BEARING, COUNTERTHRUST		17FA502113		
113	JOURNAL BEARING ASSEMBLY		17FA502123		
114	CHECK VALVE ORIFICE		19EA41262		
115	SHIM, IMPELLER		19EA511882		
116	KEY, IMPELLER		17FA4021372		
117	SPACER, IMPELLER		19EA511372		
118	SHIM, IMPELLER		19EA531882		
119	LOCKNUT, IMPELLER		17FA5121602		
120	SET SCREW, IMPELLER LOCKNUT	(2)	AE17AR166		
121	IMPELLER SHAFT		17FA5021054		
122	LOCKNUT		17FA5021602		
123	THRUST BRG SENSOR ASSEMBLY THRUST BEARING ASSEMBLY		02EX54002401		
124	THRUST BEARING ASSEMBLY		17FA502354		
	INCLUDES: ITEMS 125 - 130				
125	PAD, SPACER	(8)	19EA512032		
126	LEVELING PAD	(16)	19EA520163		
127	BASE RING ASSEMBLY		17FA502344		
128	SCREW, SOC HEAD CAP	(6)	AA44AA246		
129	SHOE RETAINING ASSEMBLY		17FA502103		
130	SHOE SET, THRUST BEARING GUIDE VANE & BLADE RING		17FA502212		
155	MOTOR, ACTUATOR (24V)		HF26BB025		
156	MOUNTING BRACKET (LOWER)		17FA5121533		
157	MOUNTING PLATE		17FA5121553		
158	CHAIN GUARD (ABS)		02EX54002301		
159	CHAIN KIT		19EX660002		
160	SPROCKET HUB (SHAFT)		17FA5021583		
161	SPROCKET (DRIVE)		17FA5021712		
162	SPROCKET (SHAFT)		17FA5121593		
163	SPEED NUT	(4)	AS41BS052		
164	SET SCREW	(2)	AE12AA196		
165	KEY (SPROCKET/SHAFT)		17FA5021782		
166	GASKET, SEAL HOUSING		19EA4110211A		
167	SEAL RETAINER		19EA421042		
168	BEARING HOUSING		19EA411032		
169	BUSHING		KT53XL093		
170	CAP SCREW, HEX HEAD	(2)	AA06GR237		
171	PELLET		19EA411031		
172	WASHER, THRUST		AU51YA391		
173	SHAFT, DRIVE PULLEY		19EA531052		
173A	"V" RING ASSEMBLY (PRESSURE)		KK71HT016		
173B	"V" RING ASSEMBLY (VACUUM)		KK71HT014		
173C	SEAL HOUSING		19EA411022		
173D	ROLL PIN		AX14CA044		
173E	KEY		19D211391		

PARTS LIST CATALOG

PARTS LIST PAGE: 003

CATALOG NO.: RCD-3517-021 REV.
SUPERSEDES: NEW REV.

NOTE: SEE "CATALOG NOTES" ON LAST PAGE FOR EXPLANATION OF SYMBOLISM.



OPEN DRIVE CENTRIFUGAL
LIQUID CHILLER R134A

17EX

SIZE: 005 005
SERIES: 0

ITM	PART DESCRIPTION	17EX5			
		ALL VOLTAGES			
GUIDE VANE & BLADE RING					
175	GUIDE VANE ASSY (A3 SHROUD)		19EA53467		
175AN	GUIDE VANE ASSY (A4 SHROUD)		19EA55467		
175BN	GUIDE VANE ASSY (A5 SHROUD)		19EA57467		
175CN	GUIDE VANE ASSY (A6 SHROUD)		19EA59467		
175D	GUIDE VANE ASSY (A8 SHROUD)		17FA582438		
175E	GUIDE VANE ASSY (A9 SHROUD)		17FA592438		
	INCLUDES: ITEMS 176 - 186				
176	CABLE ASSEMBLY		19EA51102		
177	BLADE PULLEY	(6)	19EA512142		
178	CAP SCREW,HEX HEAD	(7)	AA13BR295		
179	WASHER	(7)	19EA412592		
180	BUSHING,PRE WHIRL BLADE	(14)	KT53XL102		
181	PRE-WHIRL BLADE PACKAGE	(7)	19EA660017		
182	BUSHING,IDLER PULLEY	(7)	KT53XL065		
183	RING,RETAINING	(7)	AU48AR062		
184	PIN,IDLER PULLEY	(7)	19EA512022		
185	IDLER PULLEY	(7)	19C47771		
186	DRIVE PULLEY		19EA511005		
187	WASHER,THRUST (IDLER PULLEY)	(7)	AU02AA332		
187A	WASHER,THRUST (BLADE PULLEY)	(7)	19EA512012		
LUBRICATION PACKAGE					
188	GASKET	(3)	DK29GA0051A		
189	VALVE,SWING CHECK 1 3/8"		EC33RC391		
190	VALVE,SWING CHECK 1/2"		EC33RC181		
191	VALVE,BALL 1 1/2"		EP71C9421		
192	FILTER ASSEMBLY	(2)	17FA502343		
	INCLUDES: ITEMS 193 - 196				
193	FILTER CARTRIDGE	(4)	17S40001		
194 N	FILTER GUIDE	(2)	17FA402372		
195 N	STOPPER ASSEMBLY	(2)	19EA41512		
196 N	SPRING	(2)	17FA4021992		
197	GASKET,OIL COOLER		19FA680005		
198	OIL COOLER (REVERSE FEET)		17EA9021723		
199	COVER,C'CASE HEATER BOX		02EX55003101		
200	SIGHT GLASS	(2)	KM36RQ199		
201	COVER,ELECTRICAL BOX (BRG TEMP)		02EX55004301		
202	TERMINALS (BRG TEMP/SHAFT MOVEMENT)	(4)	HY85FP041		
203	OIL HEATER		17FA4021363		
204	VALVE,CHARGING		7792-B		
205	BODY,CHECK VALVE (EC39DM062 CORE)		EC39DM061		
206	RUBBER STRIP	(4)	19FF5021222		
OIL PUMP & MOTOR ASSEMBLY					
207 N	COMPRESSOR OIL (68 VIS) (5 GAL)		PP23RZ103		
207AN	COMPRESSOR OIL (68 VIS) (1 GAL)		P903-1001		
208	"O" RING (OIL PUMP HOUSING)		KK71GZ087		
209	OIL PUMP ASSY (200/240-3-60)		17FA502184		
209AN	OIL PUMP ASSY (300/480-3-60)		17FA512184		
209BN	OIL PUMP ASSY (507/619-3-60)		17FA522184		
209CN	OIL PUMP ASSY (220/240-3-50)		17FA532184		
209DN	OIL PUMP ASSY (346/440-3-50)		17FA542184		
	INCLUDES: ITEMS 210 - 227				
210	CLAMPING RING		19D211011		
211	RING,RETAINING,INTERNAL		AU67AA511		
212	RING,RETAINING,EXTERNAL	(2)	AU48QR094		

PARTS LIST CATALOG

PARTS LIST PAGE: 004

CATALOG NO.: RCD-3517-021 REV.
SUPERSEDES : NEW REV.

NOTE: SEE "CATALOG NOTES" ON LAST PAGE FOR EXPLANATION OF SYMBOLISM.



OPEN DRIVE CENTRIFUGAL
LIQUID CHILLER R134A

17EX

SIZE: 005 005
SERIES: 0

ITM	PART DESCRIPTION	17EX5			
			ALL VOLTAGES		
OIL PUMP & MOTOR ASSEMBLY					
213	"O" RING		KK71EW259		
214	"O" RING		KK71EW228		
215	SET SCREW		AE17AR166		
216	SHAFT		17FA4221023		
217	BEARING,ROLLER	(2)	KT55ZU100		
218	RACE,INNER	(2)	KT55ZU101		
219	VANE,PUMP	(4)	17FA4021022		
220	OIL PUMP HOUSING		17FA4222684		
221	OIL PUMP COVER		17FA4121603		
222	DOWEL PIN 1/4" DIA	(2)	AX11AR168		
223	DOWEL PIN 3/16" DIA	(2)	AX11AR172		
224	TERMINAL PIN	(5)	HY85FP060		
225	COVER,TERMINAL BOX		17FA4021012		
226	SPRING		17FA4121002		
227	PISTON		17FA4021013		
228	SEAL LEAKAGE PUMP ASSY (60 HZ)		17CA61324		
228AN	SEAL LEAKAGE PUMP ASSY (50 HZ)		17CA61334		
	INCLUDES: ITEMS 229 - 232				
229	PUMP		KK21RA001		
230	MICRO SWITCH		HR68TD015		
231	FLOAT BALL		17M427011		
232	MOTOR (60 HZ)		HC40UE115		
232AN	MOTOR (50 HZ)		HC40UE116		
233	ARM ASSY,FLOAT		17M32292		
234	GASKET,SEAL LEAK PUMP		17M42232LA		
234A	CHECK VALVE		17M427051		
CONTROL BOX GROUP					
235	POWER PANEL ASSEMBLY (BASIC)		19EX5400301		
235A	POWER PANEL ASSEMBLY (OPTIONS)	(2)	19EX5400302		
	INCLUDES: ITEMS 237 - 248				
237	ENCLOSURE (SHEET METAL ONLY)		19EX04003001		
238	POWER BOX COVER (W/LABELS)		19EX04002901		
239	TRANSFORMER (21V)(BASIC)(T1)		HT01BD113		
240	TRANSFORMER (21V)(OPTIONS)(T1,T4)	(2)	HT01BD113		
241	TRANSFORMER (24V)(T2)		HT01AW235		
242	CONTACTOR	(2)	HN53CD024		
243	DIFF. PRESSURE SWITCH		HK06UB011		
244	RELAY,OIL AUX		HN61PK052		
245	BARRIER		19XB05000401		
246	TERMINAL BLOCK		19XB05002301		
247	VOLTAGE SELECTOR SWITCH (115/230)		HR67ZZ125		
248	WIRE HARNESS ASSY		19XB04002501		
249	GROUND LUG		HY20HR001		
	NOTE: IF YOU HAVE BASIC AND WISH TO CONVERT TO OPTIONS YOU MAY ORDER 19XB45005001 OPTIONS PACKAGE.THIS INCLUDES ALL NECESSARY PARTS TO CONVERT TO OPTIONS. INSTRUCTIONS ARE INCLUDED.				
252	CONTROL PANEL ASSY (BASIC)		17EX54001701		
252A	CONTROL PANEL ASSY (OPTIONS)		17EX54001702		
	INCLUDES: ITEMS 253 - 267				
253	DOOR PANEL ASSEMBLY		19EX04000501		
254	CAM LOCK (W/KEYS)		KA19NL010		
255	LID ASSEMBLY (PIC CONTROL PANEL)		19XB04007701		
256	LIGHT ASSY (FOR LID)		19XB05001201		
257	POWER SUPPLY (5V DC)(FOR LID LITE)		HK35AA007		

PARTS LIST CATALOG

PARTS LIST PAGE: 005

CATALOG NO.: RCD-3517-021 REV.
SUPERSEDES: NEW REV.

NOTE: SEE "CATALOG NOTES" ON LAST PAGE FOR EXPLANATION OF SYMBOLISM.



OPEN DRIVE CENTRIFUGAL
LIQUID CHILLER R134A

17EX

SIZE: 005 005
SERIES: 0

ITM	PART DESCRIPTION	17EX5	
		ALL VOLTAGES	
CONTROL BOX GROUP			
259	RELAY BOARD (6 PAC)		HK35AA003
260	MODULE,8 INPUT (OPTIONS)		HK50AA006
261	MODULE ASSY (PSIO)		17EX54001801
262	CIRCUIT BREAKER 3.2 AMP	(4)	HH83ZB001
263	RUBBER BUMPER	(2)	KA58MR001
264	WIRE HARNESS (15 WIRE)		19XB04002701
266	RESISTOR WIRE ASSY		19XB04003301
	INCLUDES: ITEM 267		
267	RESISTOR (10K,1/2 W)		HT21AZ110
268	TRANSDUCER CABLE ASSY		19XB660003
	INCLUDES: ITEMS 269 - 270		
269	CABLE CONNECTOR		30GT510011
270	PIN TERMINAL		30GT510010
271	SENSOR CABLE ASSY (COMPR DISCH)		19EX04001301
272	SENSOR CABLE ASSY (OIL SUMP TEMP)		19EX04001302
273	CONNECTOR PLUG (3 PIN)(PSIO)TOP SIDE		HY84EE003
274	CONNECTOR PLUG (4 PIN)(PSIO)TOP SIDE		HY84EE004
275	CONNECTOR PLUG (18 PIN)(PSIO)	(3)	HY84EE021
276	CONNECTOR PLUG (6 PIN)(OPTIONS ONLY)		HY06MP106
278	TEMPERATURE SENSOR (W/B NOZZLES)	(4)	HH79NZ047
279	PRESS. TRANSDUCER(CLR/COND/OIL LINE)	(3)	HK05YZ002
280	SENSOR BOX COVER (THRUST/SHAFT MOV)		HX06HZ050
281	HI-DISCHARGE PRESS. CUTOUT		19EX04002601
282	STRAIN RELIEF	(6)	HN60ZM250
MACHINE ARRANGEMENT & PIPING			
283	GSKT,CLR WATER BOX FR #4 NIH 150/300	(2)	10EX45004701
284	GSKT,CLR WATER BOX FR #4 MAR 150/300	(2)	10EX45005001
285	GSKT,COND WATER BOX FR #4 NIH/MAR	(2)	09EX45001101
286	GSKT,COND WATER BOX FR #5 NIH/MAR	(2)	09EX55003001
287	SEALING STRIP,DIVISION PLATE		16JB680043
	NOTE: TO OBTAIN THE PROPER TUBES FOR YOUR PARTICULAR MACHINE, CONTACT YOUR CARRIER REPRESENTATIVE. YOU MUST PROVIDE MACHINE SERIAL NUMBER.		
288	COOLER TUBE (SEE NOTE ABOVE)		TUBE QUANTITY
288AN	COOLER TUBE QTY FR #45		924
288BN	COOLER TUBE QTY FR #46		1008
288CN	COOLER TUBE QTY FR #47		1092
288DN	COOLER TUBE QTY FR #48		1452
290	CONDENSER TUBE (SEE NOTE ABOVE)		TUBE QUANTITY
290AN	CONDENSER TUBE QTY FR #45		990
290BN	CONDENSER TUBE QTY FR #46		1080
290CN	CONDENSER TUBE QTY FR #47		1170
290DN	CONDENSER TUBE QTY FR #55		1288
290EN	CONDENSER TUBE QTY FR #56		1458
290FN	CONDENSER TUBE QTY FR #57		1602
305	VALVE,SCHRADER	(4)	06DA403844
306	ANGLE VALVE 1/2" (ECON/COND)		7792-B
307	FLARE CAP 1/2"	(4)	99CC409372
308	THERMOWELL 1/2" MFL	(2)	17FA1051112
309	GASKET,HI SIDE COVER		09EX45002201
310	GASKET,LO SIDE COVER		09EX45002101
311	FLOAT VALVE ASSY (HI/LO) (CODE 1)		09EX44007501
311A	FLOAT VALVE ASSY (HI-LO) (CODE 2)		09EX54001301
	INCLUDES: ITEMS 312 - 317		
312	FLOAT BALL		EC28HZ243

PARTS LIST CATALOG

PARTS LIST PAGE: 006

CATALOG NO.: RCD-3517-021 REV.
SUPERSEDES : NEW REV.

NOTE: SEE "CATALOG NOTES" ON LAST PAGE FOR EXPLANATION OF SYMBOLISM.



OPEN DRIVE CENTRIFUGAL
LIQUID CHILLER R134A

17EX

SIZE: 005 005
SERIES: 0

ITM	PART DESCRIPTION	17EX5			
		ALL VOLTAGES			
MACHINE ARRANGEMENT & PIPING					
313	SHAFT KEY	(2)	17FA1051452		
314	BALL BEARING	(2)	KT01BG060		
314A	RING,RETAINING,INTERNAL	(4)	AU47AA511		
315	FLOAT ARM ASSEMBLY		09EX44001601		
316	SHAFT COLLAR	(2)	09EX45002801		
317	SET SCREW	(2)	AE19AR193		
318	VALVE 10" (COND DRAIN)		ER39MZ860		
319	VALVE 5" (COOLER LIQUID FEED)		ER39MZ751		
320	GASKET 10" (SUCT/DISCH AT COMPR)	(2)	19EA4114321A		
321	GASKET 16" (SUCTION LINE)		17FA24110521A		
322	GASKET (ECON LINE/COMPR END)		17FA10110521A		
323	GASKET,RING 5" (COOLER FEED)	(2)	CT99QX651		
325	VALVE,RELIEF (3 CLR/2 ECON)	(5)	19FB660006		
326	3 WAY VALVE (ECON)		8024		
327	COMPOUND GAUGE (ECON)		KM03AF280		
328	VALVE,BALL 1" (CLR FEED DRAINS)	(2)	FP71CQ306		
329	GASKET,RING 10" (COND DRAIN)	(3)	CT99QX851		
330	BALL VALVE 1/2 ODS		900204		
330A	VALVE,PLUG (1") (OIL COOLER)		EV01CZ305		
330B	SOLENOID VALVE 1" (OIL COOLER)		EF23CM301		
333	GASKET,RING 4" (ECON GAS VLVS)	(4)	19EX05001401		
334	VALVE ASSY 4" (ECON GAS)		19FA501123		
334A	"O" RING AND PACKING PACKAGE		19FA660027		
335	VALVE ASSY,BUTTERFLY 4" (ECON GAS)		ER39MZ711		
336	GASKET,RING 12" (DISCH) HOT GAS BYPASS		CT99QX951		
337	VALVE,HOTGAS BYPASS 4"		19EX44001001		
338	GASKET,RING 4" (HGBP)	(3)	CT99QX601		
339 N	RELAY HGBP (POWER BOX) PUMPDOWN ASSEMBLY		HN61KQ120		
342 N	PUMPDOWN ASSEMBLY (208-3-60)		19EA42658		
342AN	PUMPDOWN ASSEMBLY (230-3-60)		19EA44658		
342BN	PUMPDOWN ASSEMBLY (400/460-3-50/60)		19EA46658		
342C	PUMPDOWN ASSEMBLY (575-3-60)		19EA47658		
	INCLUDES: ITEMS 343 - 383				
343 N	COMPRESSOR ASSEMBLY (208/230-3-60)		06DM8086GA3250		
343AN	COMPR ASSEMBLY (400/460-3-50/60)		06DM8086GA3650		
343B	COMPRESSOR ASSEMBLY (575-3-60)		06DM8086GC3150		
	INCLUDES: ITEMS 346 - 359				
346	GASKET SET		6D43172		
347	VALVE PLATE PACKAGE	(2)	06DA660038		
	INCLUDES: ITEMS 348 - 359				
348	DISCHARGE VALVE	(2)	6D751062		
349	DISCH VALVE STOP	(2)	6D751052		
350	SUCTION VALVE SPRING	(2)	6D401021		
351	SUCTION VALVE	(2)	NSS		
352	GASKET,VALVE PLATE		6D401073		
353	GASKET,CYL HEAD		05GA502213		
354	PISTON & PIN PACKAGE	(2)	6D68962		
355	ECCENTRIC STRAP	(2)	5D401372		
356	COMPRESSION RING	(2)	AU50CP355		
358	BEARING HEAD ASSEMBLY		06DA660126		
359	OIL FILTER ASSEMBLY		6D40103		
360	COMP SUCT SERVICE VALVE PKG		06DA660060		

PARTS LIST CATALOG

PARTS LIST PAGE: 007

CATALOG NO. : RCD-3517-021 REV.
SUPERSEDES : NEW REV.

NOTE: SEE "CATALOG NOTES" ON LAST PAGE FOR EXPLANATION OF SYMBOLISM.



OPEN DRIVE CENTRIFUGAL
LIQUID CHILLER R134A

17EX

SIZE: 005 005
SERIES: 0

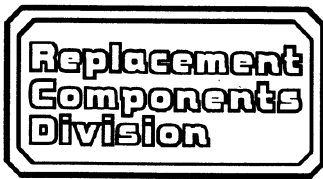
ITM	PART DESCRIPTION	17EX5			
			ALL VOLTAGES		
PUMPDOWN ASSEMBLY					
	INCLUDES: ITEM 360A				
360A	GASKET, VALVE		6D231421		
361	COMP DISCH SERVICE VALVE PKG		5F20660002		
	INCLUDES: ITEM 361A				
361A	GASKET, VALVE		6D231421		
362	CONDENSER ASSEMBLY		6D21104		
	INCLUDES: ITEMS 363 - 364				
363	TRY COCK ASSY		7F0132		
364	LIQUID VALVE		EP12BH211		
365	COMPR OVERLOAD 30A(FURNAS-MAN RESET)		HN68JX003		
366	OVERLOAD HEATER (208V)	(5)	HN71JC050		
366A	OVERLOAD HEATER (230V)	(3)	HN71JC049		
366B	OVERLOAD HEATER (460V)	(3)	HN71JC036		
366C	OVERLOAD HEATER (575V)	(3)	HN71JC031		
368	CONTROL BOX COVER		07DA500002		
369	CONTROL BOX ASSEMBLY		19EA41588		
	INCLUDES: ITEMS 370 - 376				
370	TERMINAL BLOCK		NY04EG017		
371	CONTACTOR		HN53CD115		
372	PRESSURESTAT		HK01UA181		
373	TOGGLE SWITCH		HR53ZA035		
374	FUSE HOLDER		HKP-HH		
375	FUSE (3 AMP)		AGC3		
376	GROMMET		KA56XM040		
377	SAFETY HEAD		EB51LP121		
378	OIL SEPERATOR		KH31L2008		
379	GASKET, OIL SEPERATOR		KY31LY003LA		
380	VALVE, DIAPHRAGM (1/2" ODS)	(6)	5164		
381	VALVE, ANGLE		EP20LA105		
383	GASKET, FLARE 1/2"		DD24FA151		
MISCELLANEOUS GROUP					
399 N	CARRIER LOGO (DECAL)	(2)	19XB05010301		
400 N	SHEAR-FLEX PAD(16 X 22 NEOPRENE)	(6)	19XB55003201		
401 N	STARTER MANAGEMENT MODULE(SHM)		CES0121319-01		
402 N	PAINT, SPRAY (GREY)		PH23GH022		
402AN	PAINT (GALLON CAN (GREY)		PH23GH022G		

PARTS LIST CATALOG

PARTS LIST PAGE: 008

CATALOG NO.: RCD-3517-021 REV.
SUPERSEDES : NEW REV.

NOTE: SEE "CATALOG NOTES" ON LAST PAGE FOR EXPLANATION OF SYMBOLISM.



ORDERING INSTRUCTION

1. All orders must include the complete model number and the serial number of the unit on which the parts are to be used, and the part number and description of each part.
2. Dealers should forward orders to their distributor.

GENERAL NOTES

1. This catalog contains those items most commonly required for replacement purposes. If parts other than those cataloged are required, please provide the complete model number and serial number of the unit which the parts are to be used and a complete description including references to items which are cataloged.
2. Casing parts and panels are not normally stocked, but are available upon request. Requests for casing parts and panels for units no longer in production can be quoted through Customer Service, please contact your Customer Service Representative
3. Complete "Accessory Packages" of "F.I.O.P.'s" (Factory-Installed Option Plan) are not normally stocked or supplied by the Replacement Components Division. (Refer to Master Price Pages and order from your normal source or finished goods.)

Accessory packages and F.I.O.P.'s are listed in this catalog only for reference and to assist in the selection and ordering of replacement components.

4. The replacement parts listed in this catalog are RCD " Factory-Authorized Parts" and, as a result of "standardization", may not be identical to the original part furnished on the equipment

CATALOG NOTES

1. The part number in the salespackage column indicates the part number required for that model, size, series, and/or voltage.
2. an arrow → in the salespackage column indicates that the model, size, series, and/or voltage uses the same part number as the number shown to the left.
3. An X in the salespackage column indicates that the part is not used on that model, size, series, and/or voltage.
4. A number in parenthesis before the part number indicates the quantity required for that model, size, and/or voltage. Part number only in the column indicates a quantity of one.
5. The notation "N" following the item number indicates that the item is not illustrated in the Graphic Catalog.

