



DIRECT-FIRED DOUBLE EFFECT LIQUID ABSORPTION CHILLER

16DF
SIZE: 013 - 050
SERIES: CMX/EBARA

SERVICE PARTS GUIDE

GRAPHICS CATALOG INDEX	Revision	PAGE:
MACHINE ASSEMBLY GRAPHICS.....		1 - 8

PARTS LIST CATALOG INDEX	Revision	PAGE:
16DF013 - 16DF020.....		1 - 5
16DF023 - 16DF032.....		6 - 10
16DF036 - 16DF050.....		11 - 15

ATTENTION: PLEASE FILE THIS INFORMATION AS A FINAL RELEASE

Attached you will find information that will be released as a two part Service Parts Guide. A Service Parts Guide consists of "Graphics Catalog" and "Parts List Catalog". The common link between these two types of catalogs is the CATALOG NUMBER ONLY!! The revision block that follows the Catalog No. is used as a way to update one or both parts of the Service Parts Guide. This Index Page is a reference to let the Service Parts Center know what has been released on the model listed above.

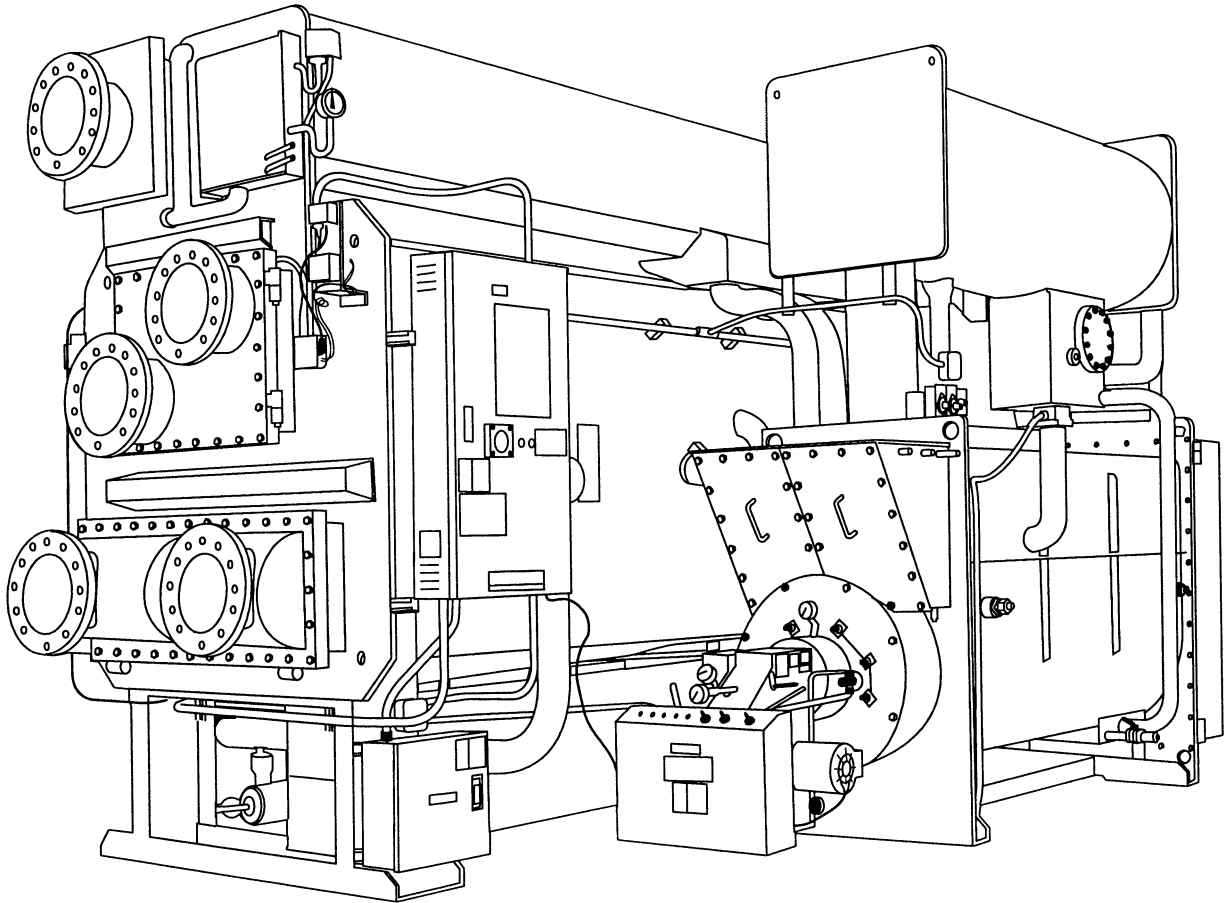
Information about This Release 2/10/98

Graphics/Parts List Catalog	
Catalog No: RCD-3516-006	Rev. _____
Supersedes: _____	Rev. _____

INDEX
Litho in U.S.A



Electronic Graphics 16006000



HOW TO USE THIS CATALOG

- 1. THIS CATALOG PRESENTS THE MOST COMMONLY USED SPECIFIED PARTS FOR THE STANDARD 16DF DIRECT-FIRED DOUBLE EFFECT LIQUID ABSORPTION CHILLER AND IS NOT APPLICABLE TO ANY SPECIAL ORDER MACHINES. (CONTACT CARRIER WITH MACHINE SERIAL NUMBER FOR ANY SPECIAL ORDER UNIT PARTS.)**
- 2. OCCASIONALLY DUE TO LIMITATIONS OF ILLUSTRATIONS USED, A PART MAY NOT BE ILLUSTRATED, THESE PARTS ARE IDENTIFIED BY "N" IN THE COLUMN NEXT TO THE ITEM NUMBER.**
- 3. POSITIVE IDENTIFICATION OF YOUR MACHINE TO PROPERLY SELECT PARTS MAY BE DONE BY REFERRING TO THE MACHINE NAME PLATE.**

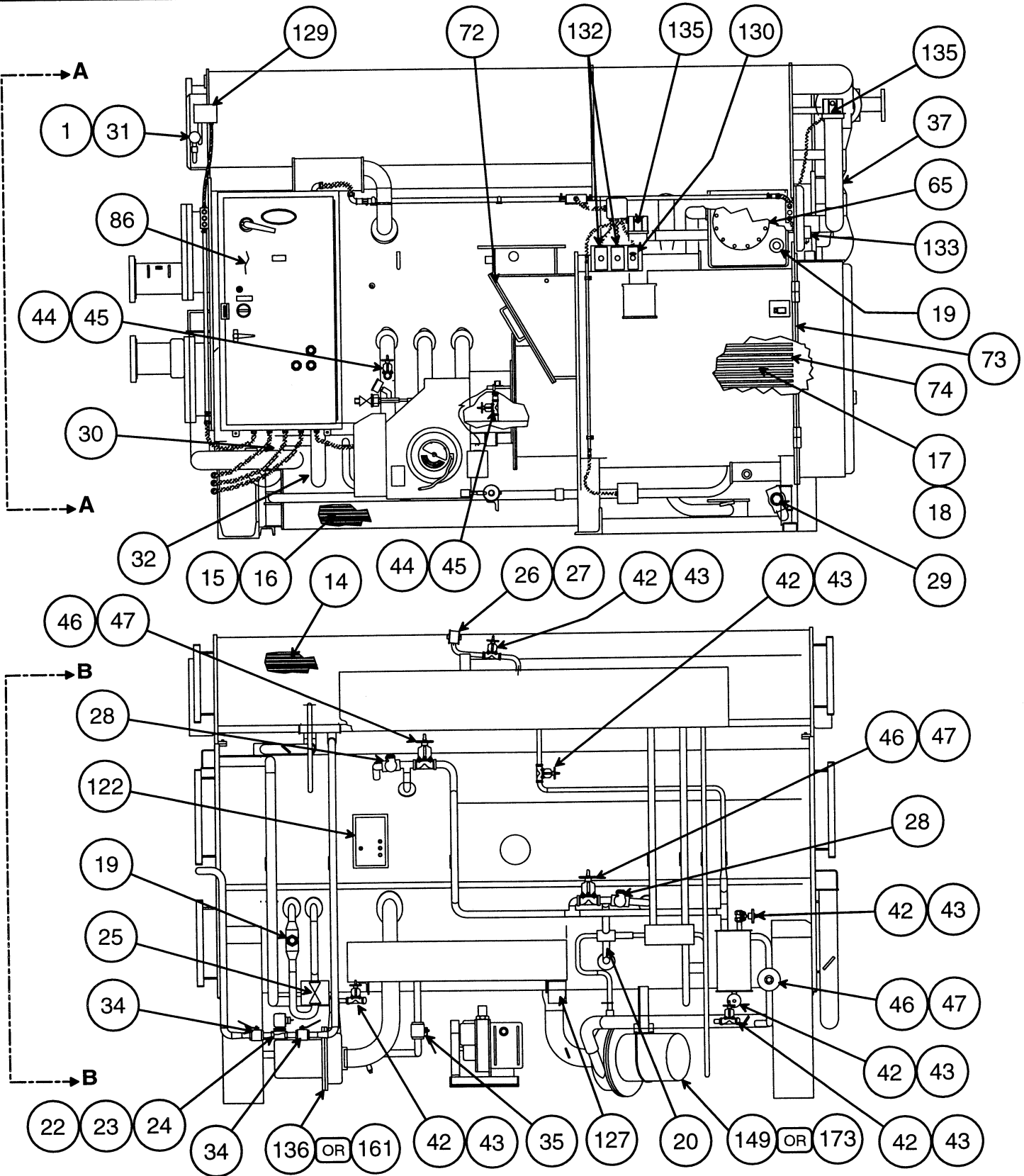


**DIRECT-FIRED DOUBLE
EFFECT LIQUID ABSORPTION
CHILLER**

16DF

SIZE: 013 - 050

SERIES: CMX/EBARA



Graphics Catalog

Catalog No: RCD-3516-006 (2/98)

Supersedes:

Note: See "Catalog Notes" on last page for explanation of symbolism.

Rev.

Rev.

16DF013 - 025

Graphics Page: 2
Litho in U.S.A



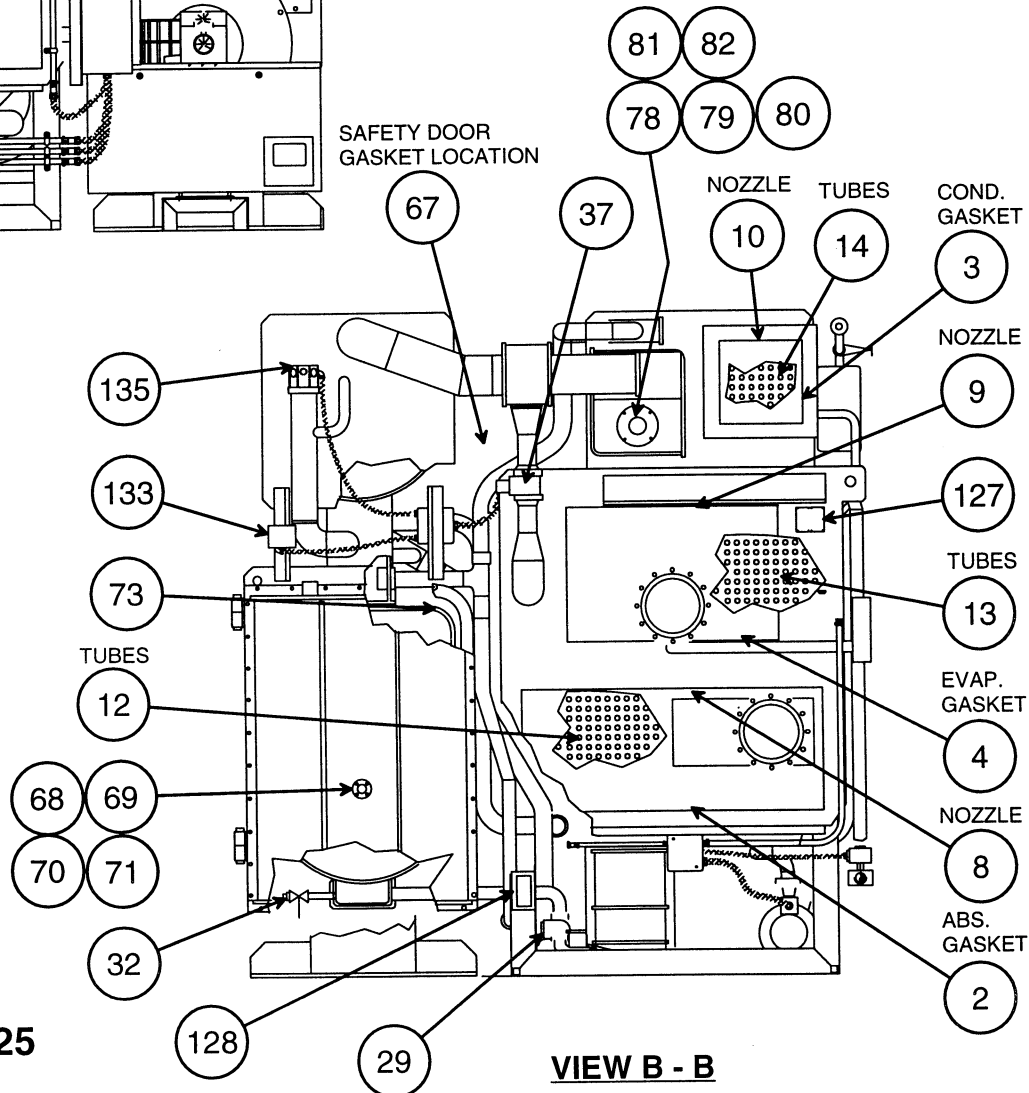
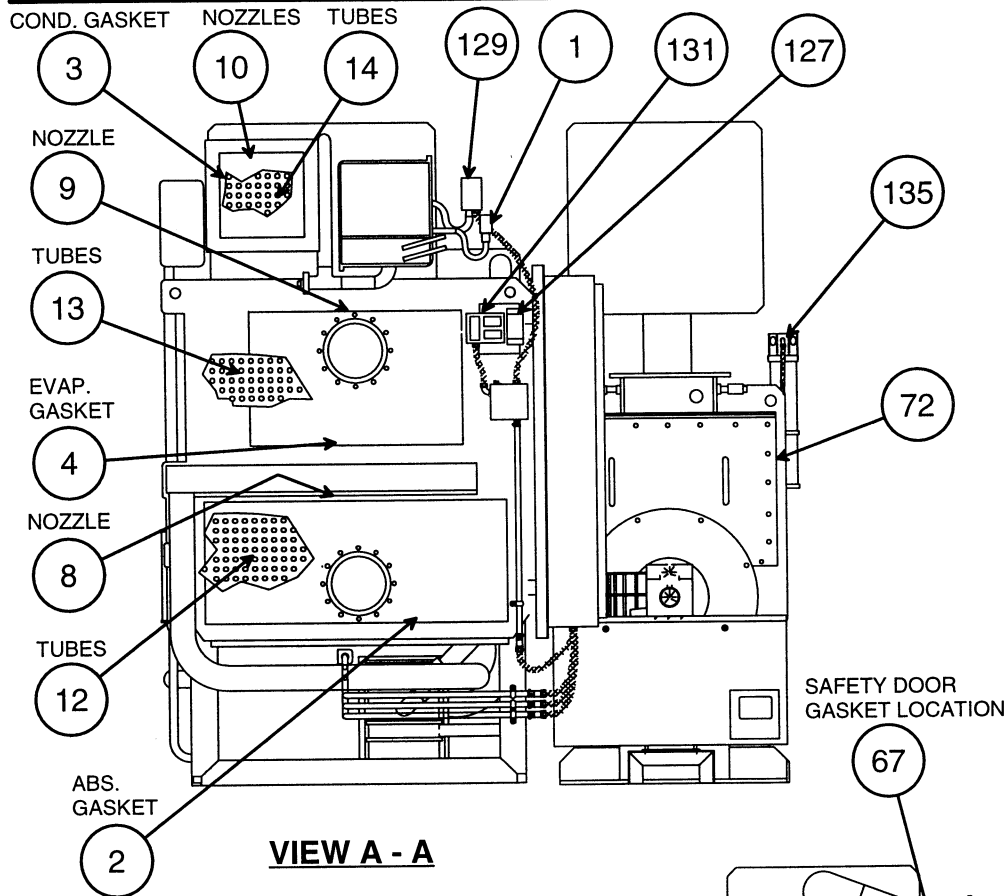
Electronic Graphics 16006002

**DIRECT-FIRED DOUBLE
EFFECT LIQUID ABSORPTION
CHILLER**

16DF

SIZE: 013 - 050

SERIES: CMX/EBARA



16DF013 - 025



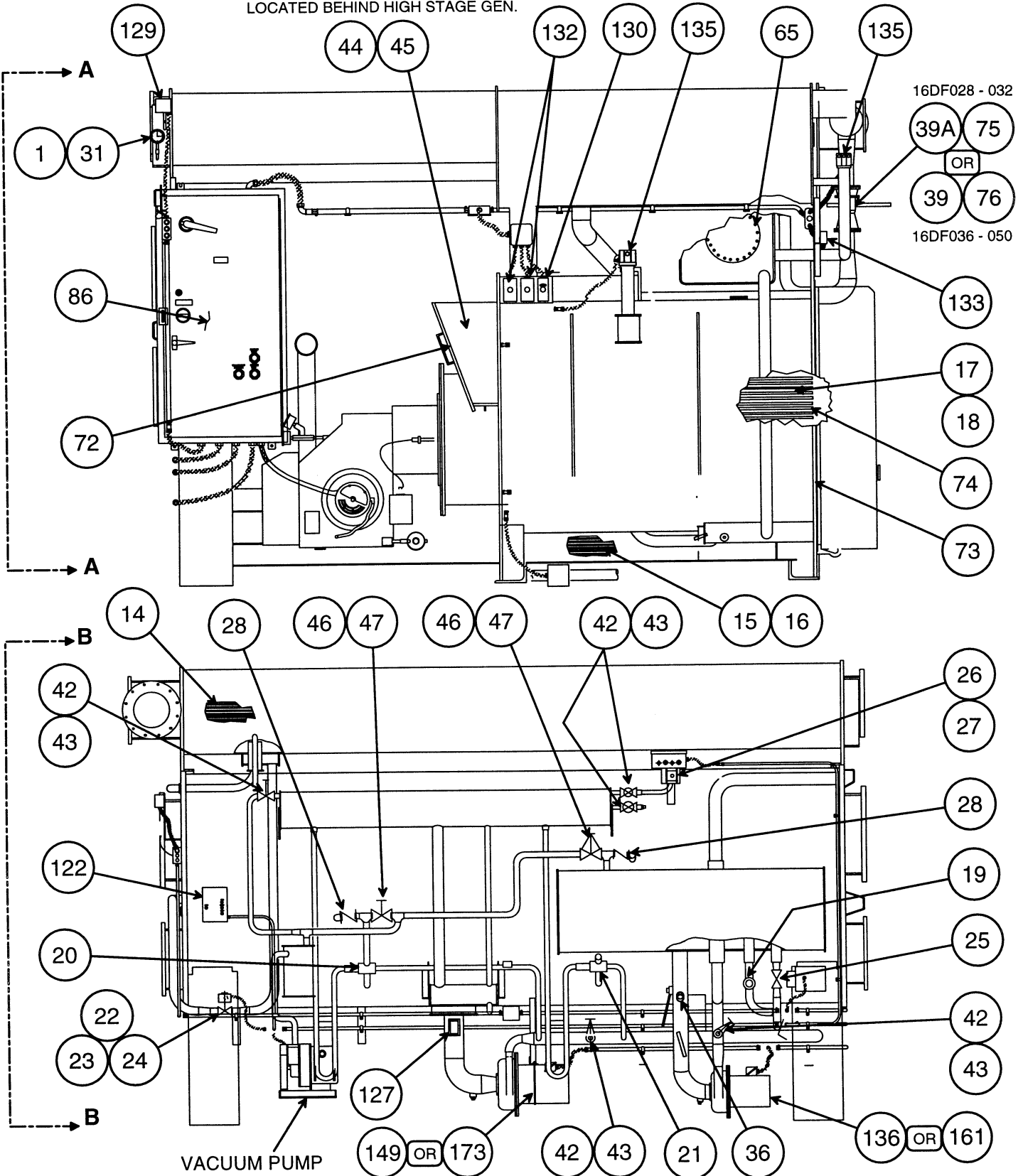
**DIRECT-FIRED DOUBLE
EFFECT LIQUID ABSORPTION
CHILLER**

16DF

SIZE: 013 - 050

SERIES: CMX/EBARA

LOCATED BEHIND HIGH STAGE GEN.



Graphics Catalog

Catalog No: RCD-3516-006 (2/98)

Rev.

Supersedes:

Rev.

Note: See "Catalog Notes" on last page for explanation of symbolism.

Graphics Page: 4
Litho in U.S.A



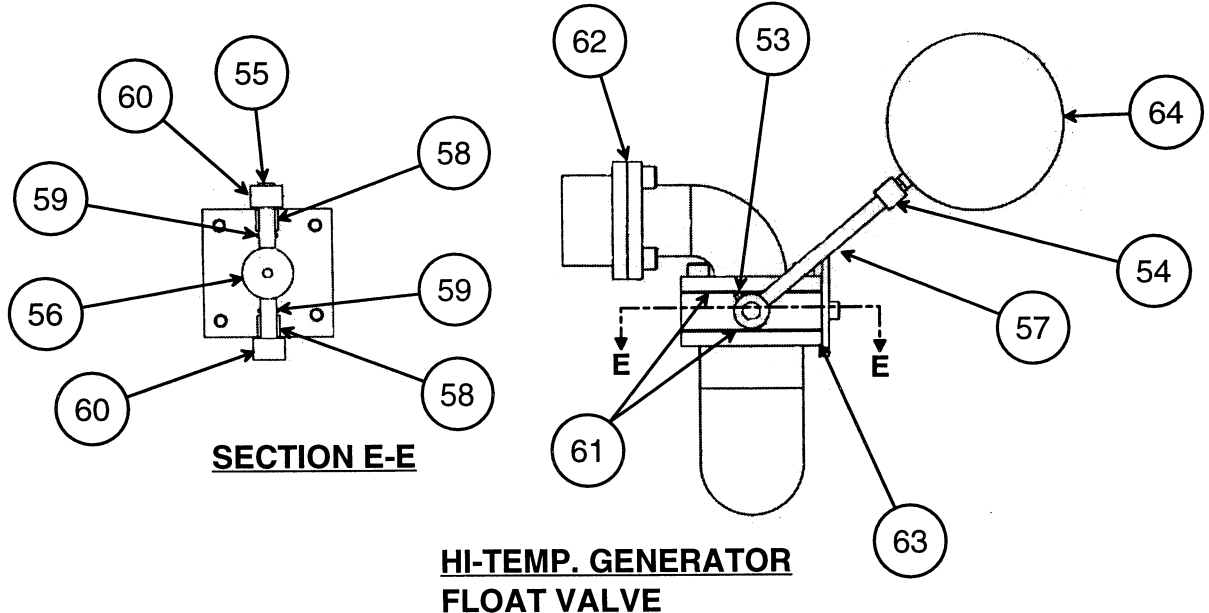
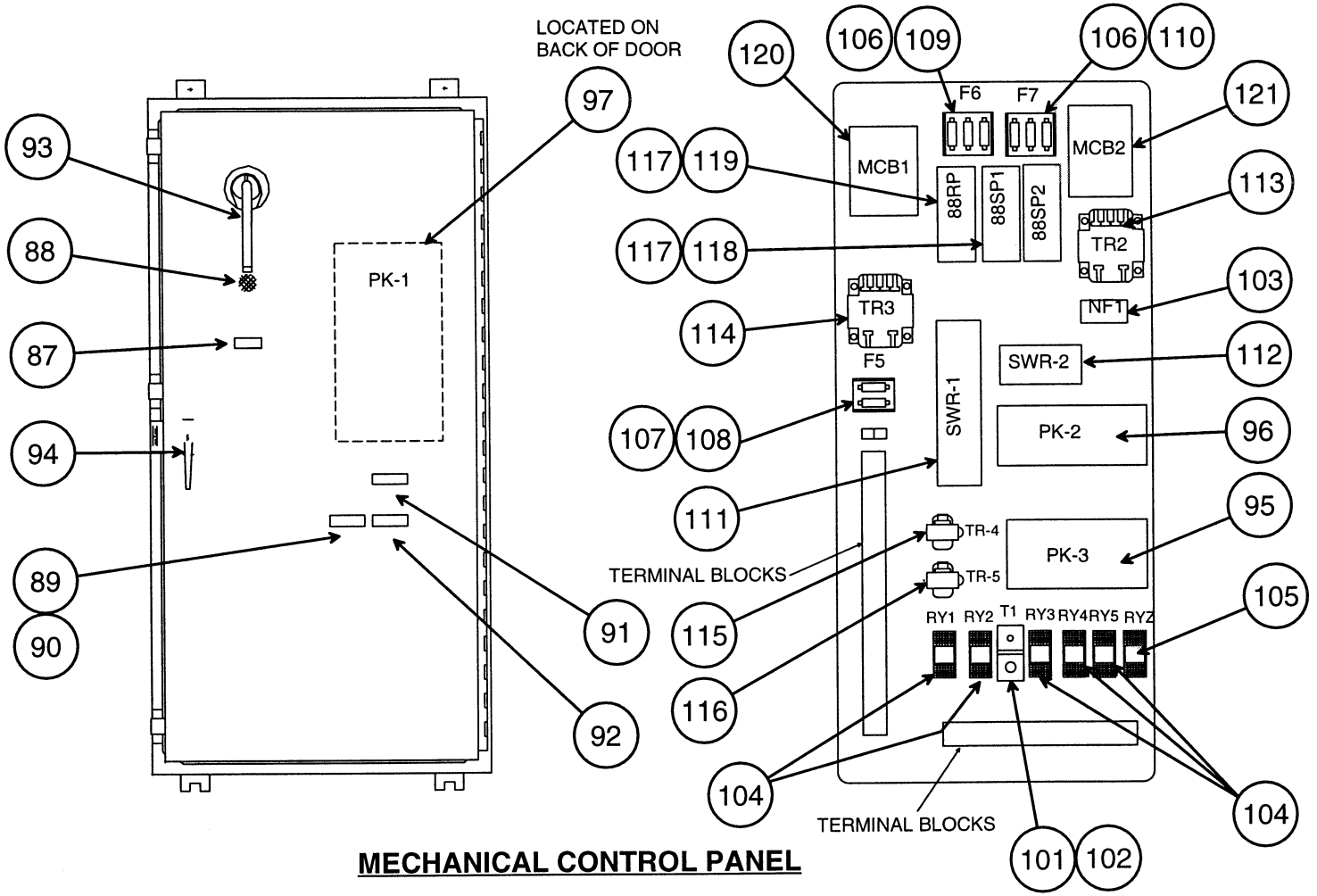
Electronic Graphics16006004

**DIRECT-FIRED DOUBLE
EFFECT LIQUID ABSORPTION
CHILLER**

16DF

SIZE: 013 - 050

SERIES: CMX/EBARA

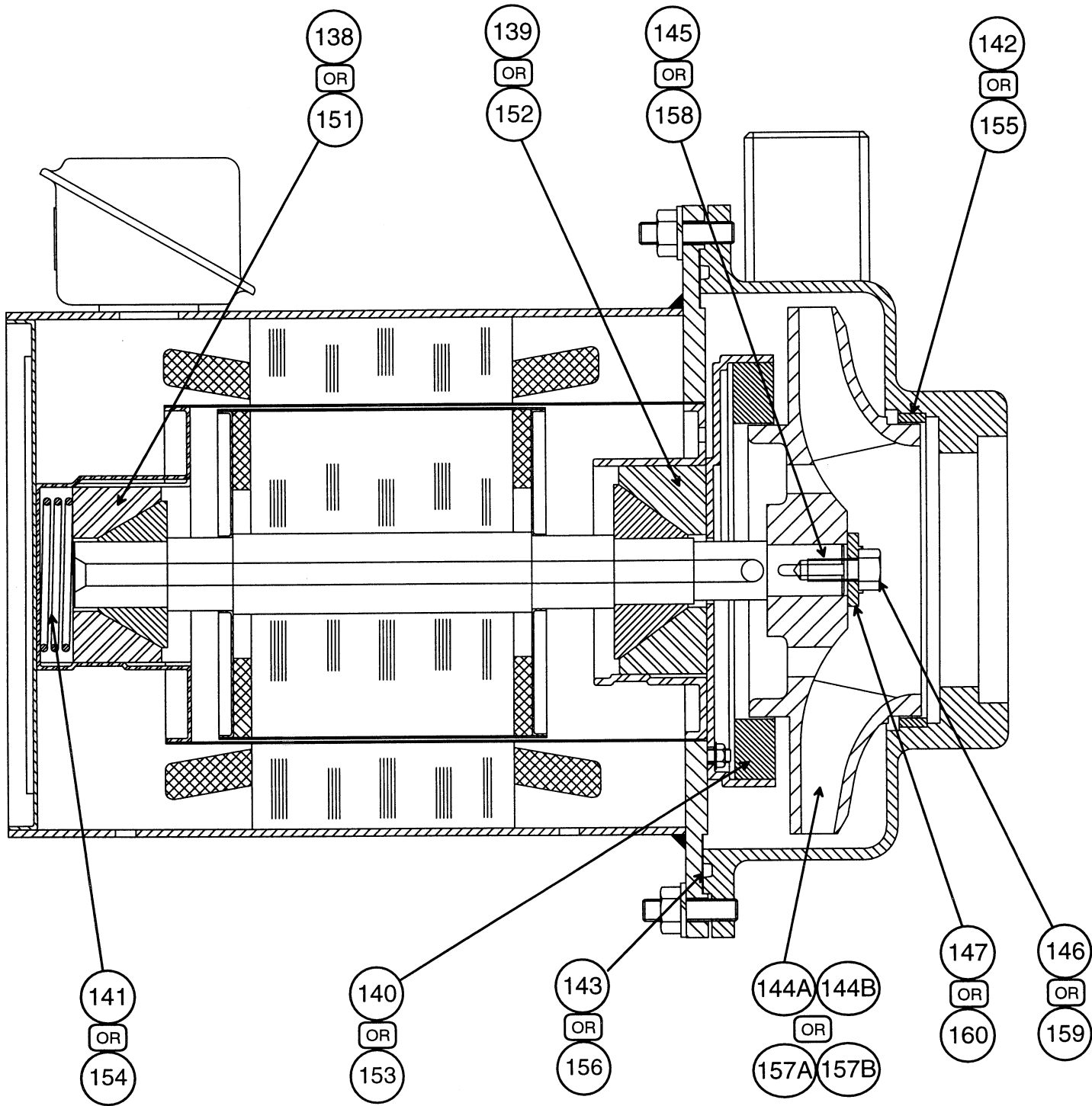


**DIRECT-FIRED DOUBLE
EFFECT LIQUID ABSORPTION
CHILLER**

16DF

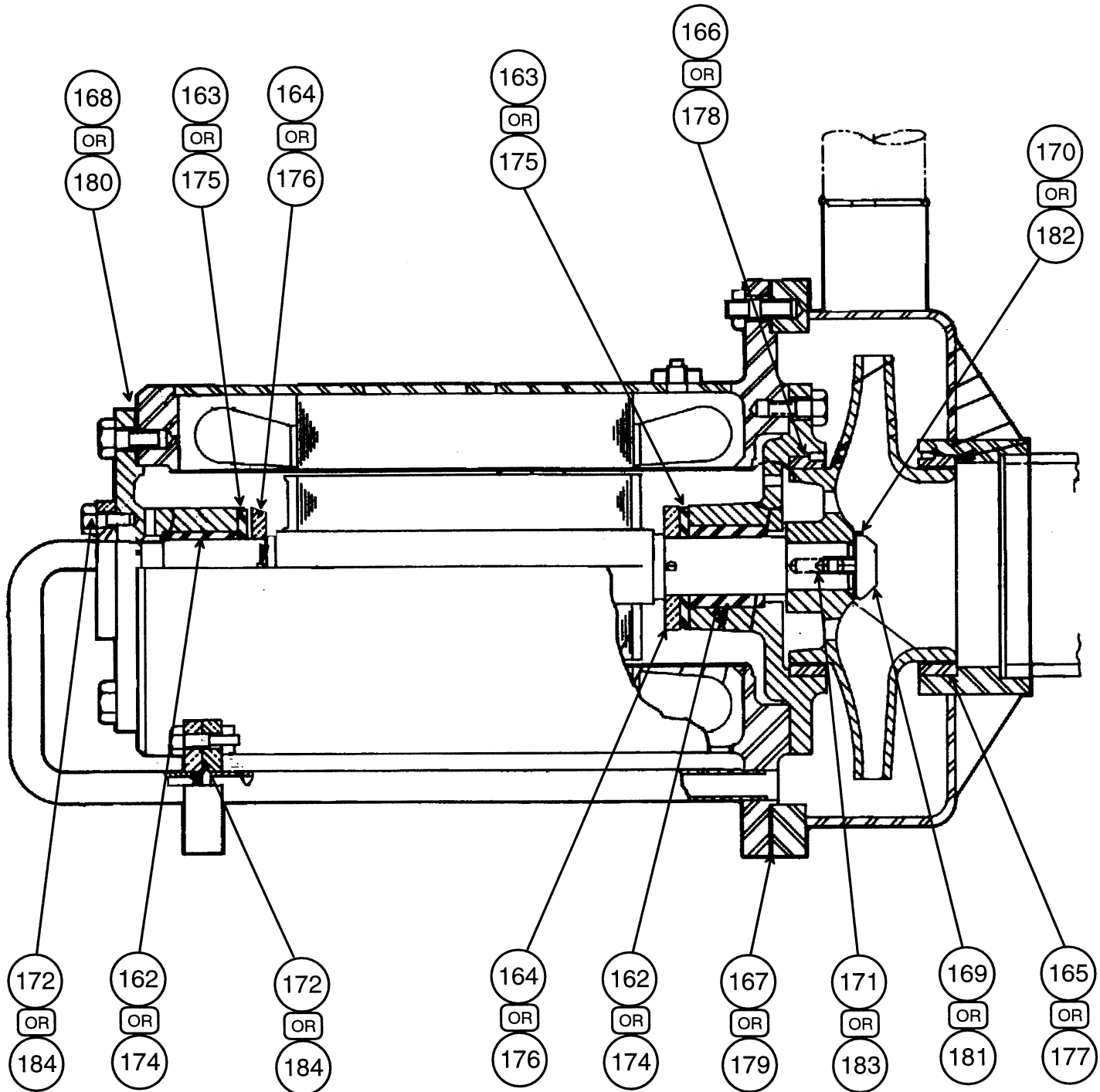
SIZE: 013 - 050

SERIES: CMX/EBARA



TYPICAL CMX REFIG. AND SOLUTION PUMP





TYPICAL EBARA REFIG. AND SOLUTION PUMP



DIRECT-FIRED DOUBLE
EFFECT LIQUID ABSORPTION
CHILLER

16DF

SIZE: 013 050
SERIES: CMX/EBARA

ITM	PART DESCRIPTION	16DF013	16DF015	16DF018	16DF020
		ALL	ALL	ALL	ALL
GENERAL PARTS LIST					
1A	GAUGE, COMPOUND (MEX.)	16DF04090062	->	->	->
1B	GAUGE, COMPOUND (EBARA)	CO1PP-57421	->	->	->
2	GASKET, ABS. WATERBOX (150#)	(2) 16DF01534033	(2) ->	(2) 16DF02034033	(2) ->
3	GASKET, COND. WATERBOX (150#)	(2) 16DF01544033	(2) ->	(2) 16DF02044033	(2) ->
4	GASKET, EVAP. WATERBOX (150#)	(2) 16DF01534333	(2) ->	(2) 16DF02034333	(2) ->
8	SPRAY NOZZLE (ABSORBER)	(172) 16DF0052813	(172) ->	(256) ->	(256) ->
9	SPRAY NOZZLE (EVAPORATOR)	(54) 16DF0052813	(54) ->	(72) ->	(72) ->
10	SPRAY NOZZLE (CONDENSER)	(44) 16DF0052803	(44) ->	(60) ->	(60) ->
12	TUBE, COPPER (ABSORBER)	(268) 16DF01590103	(272) ->	(308) ->	(340) ->
13	TUBE, COPPER (EVAPORATOR)	(238) 16DF01590203	(248) ->	(326) ->	(358) ->
14	TUBE, COPPER (CONDENSER)	(255) 16DF01590103	(285) ->	(351) ->	(383) ->
15	TUBE, COPPER (SOL. HEAT EXCHANGER)	(385) 16DF02065014	(385) ->	(538) ->	(538) ->
16	TURBULATORS (SOL. HEAT EXCHANGER)	(385) 16DF02065015	(385) ->	(538) ->	(538) ->
17	TUBE, HIGH STAGE GENERATOR	(111) 16JR8185282	(121) ->	(152) ->	(152) ->
18	TURBULATOR, HIGH STAGE GENERATOR	(111) 16JR8185292	(121) ->	(152) 16DF01551103	(152) ->
19	SIGHTGLASS (1-1/2")	KM368Z002	->	->	->
20	EDUCTOR	16JT605753	->	->	->
21	EDUCTOR	X	X	X	X
22	VALVE, SOLENOID (3/4")	16JT08010300	->	->	->
23	COIL, SOLENOID (3/4")	16JT680035	->	->	->
24	SOLENOID VALVE REPAIR KIT (3/4")	16JT680034	->	->	->
25	VALVE, MOTOR	CSPG07773	->	->	->
26	PALLADIUM CELL	16JRA10476	->	->	->
27	HEATER, PALLADIUM CELL	16DF03224670	->	->	->
28	VALVE, CHECK (1" SOC. WELD)	16DF07024053	->	->	->
29	VALVE, CHECK (1-1/2" SOC. WELD)	16DF07024055	->	->	->
30	VALVE, CHECK (2" SOC. WELD)	16DF07024056	->	->	->
31	VALVE, BALL (1/2" SCREWED)	EP71CQ181	->	->	->
32	VALVE, BALL (1/2" SOC. WELD)	16DF07024010	->	->	->
33	VALVE, BALL (1/2" SOC & NPT)	16DF07024020	->	->	->
34	VALVE, BALL (3/4" SOC. WELD)	(2) 16DF07024011	(2) ->	(2) ->	(2) ->
35	VALVE, BALL (1" SOC. WELD)	16DF07024012	->	->	->
36	VALVE, BALL (1-1/2" SOC. WELD)	16DF07024014	->	->	->
37	VALVE, BALL (2" SOC. WELD)	16DF07024015	->	->	->
38	VALVE, BALL (2-1/2" SOC. WELD)	16DF07024016	->	->	->
39	VALVE, BALL (4" NOM. FLANGED END)	16DF07024000	->	->	->
39A	VALVE, BALL (3" NOM. FLANGED END)	16DF07024003	->	->	->
40	VALVE, DIAPHRAGM (1/2" SCREWED)	EF71CA181	->	->	->
41A	DIAPHRAGM REPLACEMENT (MEX.)	EF792A181	->	->	->
41B	DIAPHRAGM REPLACEMENT (EBARA)	CO1PP-61102	->	->	->
42	VALVE, DIAPHRAGM (1/2" SOC. WELD)	16JT8102472	->	->	->
43A	DIAPHRAGM REPLACEMENT (MEX.)	16JT680024	->	->	->
43B	DIAPHRAGM REPLACEMENT (EBARA)	CO1PP-61102	->	->	->
44	VALVE, DIAPHRAGM (3/4" SOC. WELD)	16JT8102475	->	->	->
45A	DIAPHRAGM REPLACEMENT (MEX.)	16JT680025	->	->	->
45B	DIAPHRAGM REPLACEMENT (EBARA)	CO1PP-61103	->	->	->
46	VALVE, DIAPHRAGM (1" SOC. WELD)	16JT8102473	->	->	->
47A	DIAPHRAGM REPLACEMENT (MEX.)	16JT680026	->	->	->
47B	DIAPHRAGM REPLACEMENT (EBARA)	CO1PP-61104	->	->	->
48	VALVE, DIAPHRAGM (1-1/2" SOC. WELD)	16JT8102476	->	->	->
49A	DIAPHRAGM REPLACEMENT (MEX.)	16JT680028	->	->	->
49B	DIAPHRAGM REPLACEMENT (EBARA)	CO1PP-61105	->	->	->
50	STRAINER (1/2") (WELDED IN PIPE)	16JA010111	->	->	->
51	GASKET	X	X	X	X

PARTS LIST CATALOG

PARTS LIST PAGE: 001

CATALOG NO.: RCD-3516-006 REV.
SUPERSEDES: REV.

NOTE: SEE "CATALOG NOTES" ON LAST PAGE FOR EXPLANATION OF SYMBOLISM.



DIRECT-FIRED DOUBLE
EFFECT LIQUID ABSORPTION
CHILLER

16DF

SIZE: 013 050
SERIES: CMX/EBARA

ITM	PART DESCRIPTION	16DF013	16DF015	16DF018	16DF020
		ALL	ALL	ALL	ALL
GENERAL PARTS LIST					
52A	FLOAT VALVE ASY (LCD) (MEX.)	16DF0135161	16DF0155161	16DF0135161	->
52B	FLOAT VALVE ASY (LCD) (EBARA)	AAD013-5161	AAD015-5161	AAD013-5161	->
53	PIN	(3) 16DF01551601	(3) ->	(3) ->	(3) ->
54	PIN	X	X	X	X
55	SHAFT	16DF01551612	->	->	->
56	DISC, FLOAT	16DF01551614	->	->	->
57	SHAFT	(2) 16DF01551616	(2) ->	(2) ->	(2) ->
58	BUSHING, HOUSING	(2) 16DF05051618	(2) ->	(2) ->	(2) ->
59	O-RING	(2) 16DF01551621	(2) ->	(2) ->	(2) ->
60	COLLAR, ARM	(2) 16DF01551636	(2) ->	(2) ->	(2) ->
61	GASKET	(2) 16DF01551651	(2) ->	(2) ->	(2) ->
62	GASKET	16DF01551681	->	->	->
63	GASKET	16DF01551691	->	->	->
64A	BALL, FLOAT (MEX.)	16JT8101091	->	->	->
64B	BALL, FLOAT (EBARA)	CO1PP-57841	->	->	->
65	GASKET, LCD COVER	16JS6575422	->	->	->
67	GASKET, SAFETY DOOR	16DF01350164	->	->	->
68	SIGHTGLASS ASY.	16DF0135012	->	->	->
69	COVER, SIGHTGLASS	16DF01350122	->	->	->
70	GASKET, SIGHTGLASS	(2) 16DF01350123	(2) ->	(2) ->	(2) ->
71	SIGHTGLASS	16DF01350124	->	->	->
72	GASKET, SERVICE DOOR	16DF01526011	->	16DF02026011	->
73	GASKET, CHAMBER DOOR	16DF01526021	->	16DF02026021	->
74	CERAMIC SLEEVE	(111) 16DF0155102	(111) ->	(152) ->	(152) ->
75	GASKET, RING (3")	(2) CT992X501	(2) ->	(2) ->	(2) ->
76	GASKET, RING (4")	(2) CT99QX601	(2) ->	(2) ->	(2) ->
77	GASKET, RING (8")	CT99QX801	->	->	->
78	RUPTURE DISC KIT (CARBON)(W/GASKETS)	1704317	->	->	->
79	GASKET, RUPTURE DISC	(2) CR90SZ002	(2) ->	(2) ->	(2) ->
80	DISC, RUPTURE	EB59LX015	->	->	->
81	RUPTURE DISC (METALIC)	16DF0322014	->	->	->
82	GASKET, RUPTURE DISC (METALIC)	(2) CT992X501	(2) ->	(2) ->	(2) ->
83	CERAMIC BLANKET	16DF01359502	16DF01559502	16DF02059502	->
84	CERAMIC INSALATION	16DF01359503	16DF01559503	16DF02059503	->
85	ADHESIVE, CERAMIC	CO1PP-6164	->	->	->
MECHANICAL CONTROLS GROUP					
86A	CONTROL PANEL (230V)	16DF013-7001	->	->	->
86B	CONTROL PANEL (380V)	16DF013-7005	->	->	->
86C	CONTROL PANEL (460V)	16DF013-7003	->	->	->
86D	CONTROL PANEL (575V)	16DF013-7007	->	->	->
87	ELAPSE TIME METER (ETM) (CARRIER-R)	19EA660035	->	->	->
88	ALARM (HORN) (MALLORY)	SC-110-P	->	->	->
89	INDICATOR LIGHT BODY (DIALCO)	103-3101-05-4	->	->	->
90	RED LENS (DIALCO)	103-1211-403	->	->	->
91	PUSH-BUTTON (GREEN) (ALLEN-BRADLEY)	800T-A1D1	->	->	->
92	PUSH-BUTTON (RED) (ALLEN-BRADLEY)	800T-B6D2	->	->	->
93	HANDLE, DISCONNECT (DISC) (SQUARE D)	9421-LN1	->	->	->
94	HANDLE, DOOR (HOFFMAN)	A-12CCW	->	->	->
95	MICROPROCESSOR BOARD (PK3) (EBARA)	RAD015-95083	->	->	->
96	MICROPROCESSOR BOARD (PK2) (EBARA)	RAD015-95053	->	->	->
97	MICROPROCESSOR BOARD (PK1) (EBARA)	RAD015-95018	->	->	->
98	TERMINAL BLOCK (TB1) (ALLEN-BRADLEY)	(110) 1492-H1	(110) ->	(110) ->	(110) ->
99	TERMINAL BLOCK (TB2) (ALLEN-BRADLEY)	(18) 1492-CA2	(18) ->	(18) ->	(18) ->
100	TERMINAL BLOCK (TB3) (ALLEN-BRADLEY)	(3) 1492-CD2	(3) ->	(3) ->	(3) ->



DIRECT-FIRED DOUBLE
EFFECT LIQUID ABSORPTION
CHILLER

16DF

SIZE: 013 050
SERIES: CMX/EBARA

ITM	PART DESCRIPTION	16DF013	16DF015	16DF018	16DF020
		ALL	ALL	ALL	ALL
MECHANICAL CONTROLS GROUP					
101	TIMER SOCKET (TS1) (ATC)	00008256900	->	->	->
102	SOLID STATE TIMER (ATC)	328B-200-Q10-XX	->	->	->
103	FILTER (NF1) (LAMBDA)	MBW-1203-22	->	->	->
104	RELAY,120VAC (RY1-5) (P & B)	(5) KUP-14A35-120VAC	(5) ->	(5) ->	(5) ->
105	RELAY,24VDC (RYZ) (P & B)	KUP-14D15-24VDC	->	->	->
106	FUSE BLOCK (FB6,FB7) (MARATHON)	(2) 6M30A3SPQ	(2) ->	(2) ->	(2) ->
107	FUSE BLOCK (FB5) (MARATHON)	F30A2SP	->	->	->
108	FUSE (F5/F5A) (LITTLE FUSE/BUSSMAN)	FLNR-5/FRN-5	->	->	->
109A	FUSE (F6) (BUSSMAN) (230V)	(3) CCMR-50	(3) ->	(3) ->	(3) ->
109B	FUSE (F6) (BUSSMAN) (380V)	(3) CCMR-25	(3) ->	(3) ->	(3) ->
109C	FUSE (F6) (BUSSMAN) (460V)	(3) CCMR-25	(3) ->	(3) ->	(3) ->
109D	FUSE (F6) (BUSSMAN) (575V)	(3) CCMR-20	(3) ->	(3) ->	(3) ->
110A	FUSE (F7) (BUSSMAN) (230V)	(3) CCMR-6	(3) ->	(3) ->	(3) ->
110B	FUSE (F7) (BUSSMAN) (380V)	(3) CCMR-3	(3) ->	(3) ->	(3) ->
110C	FUSE (F7) (BUSSMAN) (460V)	(3) CCMR-3	(3) ->	(3) ->	(3) ->
110D	FUSE (F7) (BUSSMAN) (575V)	(3) CCMR-3	(3) ->	(3) ->	(3) ->
111	POWER SUPPLY (SWR-1) (POWER ONE)	HC8B-75W-A	->	->	->
112	POWER SUPPLY (SWR-2) (POWER ONE)	HC-24-2.4A	->	->	->
113	TRANSFORMER (TR2) (HEVI-DUTY)	E105	->	->	->
114	TRANSFORMER (TR3) (HEVI-DUTY)	E275	->	->	->
115	TRANSFORMER (TR4) (MAGNETEK)	VPS24-1000	->	->	->
116	TRANSFORMER (TR5) (MAGNETEK)	VPS16-1600	->	->	->
117	STARTER (88SP,88RP) (CUTLER-HAMMER)	(2) A16DNOA	(2) ->	(2) ->	(2) ->
118A	HEATER OVERLOAD (51SP) (230V)	(3) HN71JC067	(3) ->	(3) ->	(3) ->
118B	HEATER OVERLOAD (51SP) (380V)	(3) HN71JC058	(3) ->	(3) ->	(3) ->
118C	HEATER OVERLOAD (51SP) (460V)	(3) HN71JC054	(3) ->	(3) ->	(3) ->
118D	HEATER OVERLOAD (51SP) (575V)	(3) HN71JC050	(3) ->	(3) ->	(3) ->
119A	HEATER OVERLOAD (51RP) (230V)	(3) HN71JC031	(3) ->	(3) ->	(3) ->
119B	HEATER OVERLOAD (51RP) (380V)	(3) HN71JC023	(3) ->	(3) ->	(3) ->
119C	HEATER OVERLOAD (51RP) (460V)	(3) HN71JC021	(3) ->	(3) ->	(3) ->
119D	HEATER OVERLOAD (51RP) (575V)	(3) HN71JC021	(3) ->	(3) ->	(3) ->
120A	CIRCUIT BRKR (MCB1)(SQUARE D)(230V)	FAL-80	->	->	->
120B	CIRCUIT BRKR (MCB1)(SQUARE D)(380V)	FAL-80	->	->	->
120C	CIRCUIT BRKR (MCB1)(SQUARE D)(460V)	FAL-80	->	->	->
120D	CIRCUIT BRKT (MCB1)(SQUARE D)(575V)	FAL-80	->	->	->
121A	CIRCUIT BRKT (MCB2)(SQUARE D)(230V)	FAL-15	->	->	->
121B	CIRCUIT BRKT (MCB2)(SQUARE D)(380V)	FAL-15	->	->	->
121C	CIRCUIT BRKT (MCB2)(SQUARE D)(460V)	FAL-15	->	->	->
121D	CIRCUIT BRKT (MCB2)(SQUARE D)(575V)	FAL-15	->	->	->
122	STARTER BOX,VACUUM PUMP	16DF0051502	->	->	->
123	STARTER (88VP)	PART NUMBER N/A	->	->	->
124	HEATER OVERLOADS (51VP)	PART NUMBER N/A	->	->	->
125	FUSE BLOCK (F10)	PART NUMBER N/A	->	->	->
126	FUSE (F10)	PART NUMBER N/A	->	->	->
127	TRANSMITTER,TEMP. (100 DEG.)	(4) 16DF01311313	(4) ->	(4) ->	(4) ->
128	TRANSMITTER,TEMP. (200 DEG.)	16DF01311333	->	->	->
129	SWITCH,HIGH PRESS.(HW HEAT EXCHANGER)	P70CA-4C	->	->	->
130	SWITCH,HIGH TEMP.(SOLUTION TEMP.)	11B06-46	->	->	->
131	SWITCH,LOW CHILLED WATER TEMP.(EVAP)	16JT8106656	->	->	->
132	SWITCH,HIGH TEMP. (EXHAUST GAS)	CO1PP-57492	->	->	->
133	SWITCH,HIGH TEMP.(SMOKE CHAMBER)	16DF02020350	->	->	->
134	FLOW SWITCH	HK06ZC033	->	->	->
135	LEVEL PROBE	(2) 16JT660001	(2) ->	(2) ->	(2) ->



DIRECT-FIRED DOUBLE
EFFECT LIQUID ABSORPTION
CHILLER

16DF

SIZE: 013 050
SERIES: CMX/EBARA

ITM	PART DESCRIPTION	16DF013	16DF015	16DF018	16DF020
		ALL	ALL	ALL	ALL
PUMP GROUP					
136A	PUMP,REFRIGERANT (230/460-60HZ) (MEX)	16JT8101075	->	16DF0181075	->
136B	PUMP,REFRIGERANT (575-60HZ) (MEX.)	16JT8101075-1	->	16DF0181075-1	->
136C	PUMP,REFRIGERANT (380-60HZ) (MEX.)	16JT8101075-3	->	16DF0181075-3	->
137	MOTOR REPL. KIT (230/460V ONLY)	16JT660002	->	->	->
138	FRONT BEARING	16JT680010	->	->	->
139	DRIVE BEARING	16JT680010	->	->	->
140	MOTOR RING	16JT680018	->	->	->
141	SPRING	16JT680014	->	->	->
142	CASING RING	16JT680018	->	->	->
143	O-RING/GASKET	16JT680008	->	->	->
144A	IMPELLER (60HZ)	KK75XA601	->	16JT680037	->
144B	IMPELLER (50HZ)	NOT AVAIL. AT REL.	->	->	->
145	IMPELLER KEY	16JT680021	->	->	->
146	IMPELLER LOCKING SCREW	KT592P031	->	->	->
147	IMPELLER WASHER	KT592P021	->	->	->
148	CLIP	16JT680013	->	->	->
149A	PUMP,SOLUTION (230/460-60HZ) (MEX.)	16JT8101076	->	16JT0801076	->
149B	PUMP,SOLUTION (575-60HZ) (MEX.)	16JT8101076-1	->	16JT0801076-1	->
149C	PUMP,SOLUTION (380-60HZ) (MEX.)	16JT8101076-3	->	16JT0801076-3	->
150	MOTOR REPL. KIT (230/460V ONLY)	16JT660003	->	16JT660004	->
151	FRONT BEARING	16JT680012	->	16JT680011	->
152	DRIVE BEARING	16JT680011	->	16JT680012	->
153	MOTOR RING	16JT680019	->	16JT680020	->
154	SPRING	16JT680016	->	->	->
155	CASING RING	KK09XC042	->	KK09XD015	->
156	O-RING/GASKET	16JT680017	->	->	->
157A	IMPELLER (60HZ)	KK75XA544	->	KK75XA545	->
157B	IMPELLER (50HZ)	NOT AVAIL. AT REL.	->	KK75XA549	->
158	IMPELLER KEY	16JT680007	->	->	->
159	IMPELLER LOCKING SCREW	16JB680048	->	->	->
160	IMPELLER WASHER	16JB680044	->	->	->
161A	PUMP,REFRIGERANT (208-60HZ) (EBARA)	CSP-H04751	->	CSP-H02171	->
161B	PUMP,REFRIGERANT (460-60HZ) (EBARA)	CSP-H07881	->	CSP-H07891	->
161C	PUMP,REFRIGERANT (480-60HZ) (EBARA)	CSP-H07881	->	CSP-H07891	->
162	BEARING,RADIAL	(2) N/A	(2) ->	(2) C16JH0108222	(2) ->
163	BEARING,THRUST	(2) N/A	(2) ->	(2) C16JH0108212	(2) ->
164	COLLAR,THRUST	(2) N/A	(2) ->	(2) C16JH0128202	(2) ->
165	WEAR RING,PUMP CASING	N/A	->	C16JH0128232	->
166	WEAR RING,MOTOR SIDE	N/A	->	C16JH0128232	->
167	GASKET,CASING SIDE	N/A	->	C16JA0108532	->
168	GASKET,END COVER SIDE	N/A	->	C16JH0128532	->
169	LOCK NUT,IMPELLER	N/A	->	C16JH0109222	->
170	WASHER,IMPELLER	N/A	->	C16JH0109232	->
171	KEY,IMPELLER	N/A	->	C16JH0109212	->
172	O-RING	N/A	->	X	X
173A	PUMP,SOLUTION (208-60HZ) (EBARA)	AAD015-6835X1	->	AAD025-6835X1	->
173B	PUMP,SOLUTION (460-60HZ) (EBARA)	AAD015-6938X1	->	AAD025-6938X1	->
173C	PUMP,SOLUTION (480-60HZ) (EBARA)	AAD015-6939X1	->	AAD025-6939X1	->
174	BEARING,RADIAL	(2) C16JA0328222	(2) ->	(2) ->	(2) ->
175	BEARING,THRUST	(2) C16JA0328212	(2) ->	(2) ->	(2) ->
176	COLLAR,THRUST	(2) C16JH0248202	(2) ->	(2) C16JH0328202	(2) ->
177	WEAR RING,PUMP CASING	C16JH0248232	->	C16JH0328232	->
178	WEAR RING,MOTOR SIDE	PART NUMBER REQ	->	->	->
179	GASKET,CASING SIDE	C16JA0978532	->	->	->

PARTS LIST CATALOG

PARTS LIST PAGE: 004

CATALOG NO. : RCD-3516-006 REV.
SUPERSEDES : REV.

NOTE: SEE "CATALOG NOTES" ON LAST PAGE FOR EXPLANATION OF SYMBOLISM.



DIRECT-FIRED DOUBLE
EFFECT LIQUID ABSORPTION
CHILLER

16DF

SIZE: 013 050
SERIES: CMX/EBARA

ITM	PART DESCRIPTION	16DF023	16DF025	16DF028	16DF032
		ALL	ALL	ALL	ALL
GENERAL PARTS LIST					
1A	GAUGE, COMPOUND (MEX.)	16DF04090062	->	->	->
1B	GAUGE, COMPOUND (EBARA)	CO1PP-57421	->	->	->
2	GASKET, ABS. WATERBOX (150#)	(2) 16DF02534033	(2) ->	(2) 16DF03234043	(2) ->
3	GASKET, COND. WATERBOX (150#)	(2) 16DF02544033	(2) ->	(2) 16DF03244033	(2) ->
4	GASKET, EVAP. WATERBOX (150#)	(2) 16DF02534333	(2) ->	(2) 16DF03234333	(2) ->
8	SPRAY NOZZLE (ABSORBER)	(256) 16DF0052813	(256) ->	(440) ->	(440) ->
9	SPRAY NOZZLE (EVAPORATOR)	(90) 16DF0052813	(90) ->	(160) ->	(160) ->
10	SPRAY NOZZLE (CONDENSER)	(72) 16DF0052803	(72) ->	(90) ->	(90) ->
12	TUBE, COPPER (ABSORBER)	(439) 16DF01590103	(439) ->	(400) 16DF04090103	(443) ->
13	TUBE, COPPER (EVAPORATOR)	(448) 16DF01590203	(448) ->	(348) 16DF04090203	(423) ->
14	TUBE, COPPER (CONDENSER)	(441) 16DF01590103	(481) ->	(405) 16DF04090103	(460) ->
15	TUBE, COPPER (SOL. HEAT EXCHANGER)	(640) 16DF02065014	(640) ->	(549) 16DF04065014	(549) ->
16	TURBULATORS (SOL. HEAT EXCHANGER)	(640) 16DF02065015	(640) ->	(549) 16DF04065015	(549) ->
17	TURBULATOR, HIGH STAGE GENERATOR	(194) 16JR8185282	(194) ->	(110) 16DF03251003	(110) ->
18	TURBULATOR, HIGH STAGE GENERATOR	(194) 16DF01551103	(194) ->	(110) 16DF03251103	(110) ->
19	SIGHTGLASS (1-1/2")	KM36B2002	->	->	->
20	EDUCTOR	16JT605753	->	->	->
21	EDUCTOR	X	X	16JT610743	->
22	VALVE, SOLENOID (3/4")	16JT08010301	->	16JT08010300	->
23	COIL, SOLENOID (3/4")	16JT680035	->	->	->
24	SOLENOID VALVE REPAIR KIT (3/4")	16JT680034	->	->	->
25	VALVE, MOTOR	CSPG07773	->	->	->
26	PALLADIUM CELL	16JRA10476	->	->	->
27	HEATER, PALLADIUM CELL	16DF03224670	->	->	->
28	VALVE, CHECK (1" SOC. WELD)	16DF07024053	->	->	->
29	VALVE, CHECK (1-1/2" SOC. WELD)	16DF07024055	->	->	->
30	VALVE, CHECK (2" SOC. WELD)	16DF07024056	->	->	->
31	VALVE, BALL (1/2" SCREWED)	EP71CQ181	->	->	->
32	VALVE, BALL (1/2" SOC. WELD)	16DF07024010	->	->	->
33	VALVE, BALL (1/2" SOC & NPT)	16DF07024020	->	->	->
34	VALVE, BALL (3/4" SOC. WELD)	(2) 16DF07024011	(2) ->	(2) ->	(2) ->
35	VALVE, BALL (1" SOC. WELD)	16DF07024012	->	->	->
36	VALVE, BALL (1-1/2" SOC. WELD)	16DF07024014	->	->	->
37	VALVE, BALL (2" SOC. WELD)	16DF07024015	->	->	->
38	VALVE, BALL (2-1/2" SOC. WELD)	16DF07024016	->	->	->
39	VALVE, BALL (4" NOM. FLANGED END)	16DF07024000	->	->	->
39A	VALVE, BALL (3" NOM. FLANGED END)	16DF07024003	->	->	->
40	VALVE, DIAPHRAGM (1/2" SCREWED)	EF71CA181	->	->	->
41A	DIAPHRAGM REPLACEMENT (MEX.)	EF79ZA181	->	->	->
41B	DIAPHRAGM REPLACEMENT (EBARA)	CO1PP-61102	->	->	->
42	VALVE, DIAPHRAGM (1/2" SOC. WELD)	16JT8102472	->	->	->
43A	DIAPHRAGM REPLACEMENT (MEX.)	16JT680024	->	->	->
43B	DIAPHRAGM REPLACEMENT (EBARA)	CO1PP-61102	->	->	->
44	VALVE, DIAPHRAGM (3/4" SOC. WELD)	16JT8102475	->	->	->
45A	DIAPHRAGM REPLACEMENT (MEX.)	16JT680025	->	->	->
45B	DIAPHRAGM REPLACEMENT (EBARA)	CO1PP-61103	->	->	->
46	VALVE, DIAPHRAGM (1" SOC. WELD)	16JT8102473	->	->	->
47A	DIAPHRAGM REPLACEMENT (MEX.)	16JT680026	->	->	->
47B	DIAPHRAGM REPLACEMENT (EBARA)	CO1PP-61104	->	->	->
48	VALVE, DIAPHRAGM (1-1/2" SOC. WELD)	16JT8102476	->	->	->
49A	DIAPHRAGM REPLACEMENT (MEX.)	16JT680028	->	->	->
49B	DIAPHRAGM REPLACEMENT (EBARA)	CO1PP-61105	->	->	->
50	STRAINER (1/2") (WELDED IN PIPE)	16JA010111	->	->	->
51	GASKET	X	X	16DF01350134	->

PARTS LIST CATALOG

PARTS LIST PAGE: 006

CATALOG NO.: RCD-3516-006 REV.
SUPERSEDES: REV.

NOTE: SEE "CATALOG NOTES" ON LAST PAGE FOR EXPLANATION OF SYMBOLISM.



DIRECT-FIRED DOUBLE
EFFECT LIQUID ABSORPTION
CHILLER

16DF

SIZE: 013 050
SERIES: CMX/EBARA

ITM	PART DESCRIPTION	16DF023	16DF025	16DF028	16DF032
		ALL	ALL	ALL	ALL
GENERAL PARTS LIST					
52A	FLOAT VALVE ASY (LCD) (MEX.)	16DF0255161	->	16DF0325161	->
52B	FLOAT VALVE ASY (LCD) (EBARA)	AAD015-5161	->	AAD032-5161	->
53	PIN	PART NUMBER N/A	->	(2) 16DF03251619	(2) ->
54	PIN	PART NUMBER N/A	->	16DF03251601	->
55	SHAFT	PART NUMBER N/A	->	16DF03251612	->
56	DISC, FLOAT	PART NUMBER N/A	->	16DF03251614	->
57	SHAFT	PART NUMBER N/A	->	(2) 16DF03251616	(2) ->
58	BUSHING,HOUSING	PART NUMBER N/A	->	(2) 16DF05051618	(2) ->
59	O-RING	PART NUMBER N/A	->	(2) 16DF03251621	(2) ->
60	COLLAR,ARM	PART NUMBER N/A	->	(2) 16DF03251636	(2) ->
61	GASKET	PART NUMBER N/A	->	(2) 16DF03251681	(2) ->
62	GASKET	PART NUMBER N/A	->	16DF03251651	->
63	GASKET	PART NUMBER N/A	->	16DF05051691	->
64A	BALL,FLOAT (MEX.)	PART NUMBER N/A	->	16JT8101091	->
64B	BALL,FLOAT (EBARA)	COIPP-57841	->	->	->
65	GASKET,LCD COVER	16JS6575422	->	->	->
67	GASKET,SAFETY DOOR	16DF02553126	->	16DF03250146	->
68	SIGHTGLASS ASY.	16DF0135012	->	->	->
69	COVER,SIGHTGLASS	16DF01350122	->	->	->
70	GASKET,SIGHTGLASS	(2) 16DF01350123	(2) ->	(2) ->	(2) ->
71	SIGHTGLASS	16DF01350124	->	->	->
72	GASKET,SERVICE DOOR	16DF01326011	->	16DF01526021	->
73	GASKET,CHAMBER DOOR	16DF01326021	->	16DF01526031	->
74	CERAMIC SLEEVE	(194) 16DF0155102	(194) ->	(110) 16DF0285102	(110) ->
75	GASKET,RING (3")	(2) CT992X501	(2) ->	(2) ->	(2) ->
76	GASKET,RING (4")	(2) CT990X601	(2) ->	(2) ->	(2) ->
77	GASKET,RING (8")	CT990X801	->	->	->
78	RUPTURE DISC KIT (CARBON)(W/GASKETS)	1704317	->	->	->
79	GASKET,RUPTURE DISC	(2) CR90SZ002	(2) ->	(2) ->	(2) ->
80	DISC,RUPTURE	EB59LX015	->	->	->
81	RUPTURE DISC (METALIC)	16DF0322014	->	->	->
82	GASKET,RUPTURE DISC (METALIC)	(2) CT992X501	(2) ->	(2) ->	(2) ->
83	CERAMIC BLANKET	16DF02559502	->	16DF03259502	->
84	CERAMIC INSALATION	16DF02559503	->	16DF03259503	->
85	ADHESIVE,CERAMIC	COIPP-6164	->	->	->
MECHANICAL CONTROLS GROUP					
86A	CONTROL PANEL (230V)	16DF013-7001	->	->	->
86B	CONTROL PANEL (380V)	16DF013-7005	->	->	->
86C	CONTROL PANEL (460V)	16DF013-7003	->	->	->
86D	CONTROL PANEL (575V)	16DF013-7007	->	->	->
87	ELAPSE TIME METER (ETM) (CARRIER-R	19EA660035	->	->	->
88	ALARM (HORN) (MALLORY)	SC-110-P	->	->	->
89	INDICATOR LIGHT BODY (DIALCO)	103-3101-05-4	->	->	->
90	RED LENS (DIALCO)	103-1211-403	->	->	->
91	PUSH-BUTTON (GREEN) (ALLEN-BRADLEY)	800T-A1D1	->	->	->
92	PUSH-BUTTON (RED) (ALLEN-BRADLEY)	800T-B6D2	->	->	->
93	HANDLE,DISCONNECT (DISC) (SQUARE D	9421-LN1	->	->	->
94	HANDLE,DOOR (HOFFMAN)	A-12CCN	->	->	->
95	MICROPROCESSOR BOARD (PK3) (EBARA)	RAD015-95083	->	->	->
96	MICROPROCESSOR BOARD (PK2) (EBARA)	RAD015-95053	->	->	->
97	MICROPROCESSOR BOARD (PK1) (EBARA)	RAD015-95018	->	->	->
98	TERMINAL BLOCK (TB1) (ALLEN-BRADLEY)	(110) 1492-H1	(110) ->	(110) ->	(110) ->
99	TERMINAL BLOCK (TB2) (ALLEN-BRADLEY)	(18) 1492-CA2	(18) ->	(18) ->	(18) ->
100	TERMINAL BLOCK (TB3) (ALLEN-BRADLEY)	(3) 1492-CD2	(3) ->	(3) ->	(3) ->

PARTS LIST CATALOG

PARTS LIST PAGE: 007

CATALOG NO. : RCD-3516-006 REV.
SUPERSEDES : REV.

NOTE: SEE "CATALOG NOTES" ON LAST PAGE FOR EXPLANATION OF SYMBOLISM.



DIRECT-FIRED DOUBLE
EFFECT LIQUID ABSORPTION
CHILLER

16DF

SIZE: 013 050
SERIES: CMX/EBARA

ITM	PART DESCRIPTION	16DF023	16DF025	16DF028	16DF032
		ALL	ALL	ALL	ALL
MECHANICAL CONTROLS GROUP					
101	TIMER SOCKET (TS1) (ATC)	00008256900	->	->	->
102	SOLID STATE TIMER (ATC)	328B-200-Q10-XX	->	->	->
103	FILTER (NF1) (LAMBDA)	MBW-1203-22	->	->	->
104	RELAY,120VAC (RY1-5) (P & B)	(5) KUP-14A35-120VAC	(5) ->	(5) ->	(5) ->
105	RELAY,24VDC (RY2) (P & B)	KUP-14D15-24VDC	->	->	->
106	FUSE BLOCK (FB6,FB7) (MARATHON)	(2) 6M30A3SPQ	(2) ->	(2) ->	(2) ->
107	FUSE BLOCK (FB5) (MARATHON)	F30A2SP	->	->	->
108	FUSE (F5/F5A) (LITTLE FUSE/BUSSMAN)	FLNR-5/ERN-5	->	->	->
109A	FUSE (F6) (BUSSMAN) (230V)	(3) CCMR-50	(3) ->	(3) ->	(3) ->
109B	FUSE (F6) (BUSSMAN) (380V)	(3) CCMR-25	(3) ->	(3) ->	(3) ->
109C	FUSE (F6) (BUSSMAN) (460V)	(3) CCMR-25	(3) ->	(3) ->	(3) ->
109D	FUSE (F6) (BUSSMAN) (575V)	(3) CCMR-20	(3) ->	(3) ->	(3) ->
110A	FUSE (F7) (BUSSMAN) (230V)	(3) CCMR-6	(3) ->	(3) ->	(3) ->
110B	FUSE (F7) (BUSSMAN) (380V)	(3) CCMR-3	(3) ->	(3) ->	(3) ->
110C	FUSE (F7) (BUSSMAN) (460V)	(3) CCMR-3	(3) ->	(3) ->	(3) ->
110D	FUSE (F7) (BUSSMAN) (575V)	(3) CCMR-3	(3) ->	(3) ->	(3) ->
111	POWER SUPPLY (SWR-1) (POWER ONE)	HCBB-75N-A	->	->	->
112	POWER SUPPLY (SWR-2) (POWER ONE)	HC-24-2.4A	->	->	->
113	TRANSFORMER (TR2) (HEVI-DUTY)	E105	->	->	->
114	TRANSFORMER (TR3) (HEVI-DUTY)	E275	->	->	->
115	TRANSFORMER (TR4) (MAGNETEK)	VPS24-1000	->	->	->
116	TRANSFORMER (TR5) (MAGNETEK)	VPS16-1600	->	->	->
117	STARTER (88SP,88RP) (CUTLER-HAMMER)	(2) A16DNOA	(2) ->	(2) ->	(2) ->
118A	HEATER OVERLOAD (51SP) (230V)	(3) HN71JC067	(3) ->	(3) ->	(3) ->
118B	HEATER OVERLOAD (51SP) (380V)	(3) HN71JC058	(3) ->	(3) ->	(3) ->
118C	HEATER OVERLOAD (51SP) (460V)	(3) HN71JC054	(3) ->	(3) ->	(3) ->
118D	HEATER OVERLOAD (51SP) (575V)	(3) HN71JC050	(3) ->	(3) ->	(3) ->
119A	HEATER OVERLOAD (51RP) (230V)	(3) HN71JC031	(3) ->	(3) HN71JC054	(3) ->
119B	HEATER OVERLOAD (51RP) (380V)	(3) HN71JC023	(3) ->	(3) HN71JC043	(3) ->
119C	HEATER OVERLOAD (51RP) (460V)	(3) HN71JC021	(3) ->	(3) HN71JC041	(3) ->
119D	HEATER OVERLOAD (51RP) (575V)	(3) HN71JC021	(3) ->	(3) HN71JC037	(3) ->
120A	CIRCUIT BRKR (MCB1)(SQUARE D)(230V)	FAL-80	->	->	->
120B	CIRCUIT BRKR (MCB1)(SQUARE D)(380V)	FAL-80	->	->	->
120C	CIRCUIT BRKR (MCB1)(SQUARE D)(460V)	FAL-80	->	->	->
120D	CIRCUIT BRKT (MCB1)(SQUARE D)(575V)	FAL-80	->	->	->
121A	CIRCUIT BRKT (MCB2)(SQUARE D)(230V)	FAL-15	->	->	->
121B	CIRCUIT BRKT (MCB2)(SQUARE D)(380V)	FAL-15	->	->	->
121C	CIRCUIT BRKT (MCB2)(SQUARE D)(460V)	FAL-15	->	->	->
121D	CIRCUIT BRKT (MCB2)(SQUARE D)(575V)	FAL-15	->	->	->
122	STARTER BOX,VACUUM PUMP	16DF0051502	->	->	->
123	STARTER (88VP)	PART NUMBER N/A	->	->	->
124	HEATER OVERLOADS (51VP)	PART NUMBER N/A	->	->	->
125	FUSE BLOCK (F10)	PART NUMBER N/A	->	->	->
126	FUSE (F10)	PART NUMBER N/A	->	->	->
127	TRANSMITTER,TEMP. (100 DEG.)	(4) 16DF01311313	(4) ->	(4) ->	(4) ->
128	TRANSMITTER,TEMP. (200 DEG.)	16DF01311333	->	->	->
129	SWITCH,HIGH PRESS.(HW HEAT EXCHANGER)	P70CA-4C	->	->	->
130	SWITCH,HIGH TEMP.(SOLUTION TEMP.)	11806-46	->	->	->
131	SWITCH,LOW CHILLED WATER TEMP.(EVAP)	16JT8106656	->	->	->
132	SWITCH,HIGH TEMP. (EXHAUST GAS)	C01PP-57492	->	->	->
133	SWITCH,HIGH TEMP.(SMOKE CHAMBER)	16DF02020350	->	->	->
134	FLOW SWITCH	HK06ZC033	->	->	->
135	LEVEL PROBE	(2) 16JT660001	(2) ->	(2) ->	(2) ->



DIRECT-FIRED DOUBLE
EFFECT LIQUID ABSORPTION
CHILLER

16DF

SIZE: 013 050
SERIES: CMX/EBARA

ITM	PART DESCRIPTION	16DF023	16DF025	16DF028	16DF032
		ALL	ALL	ALL	ALL
PUMP GROUP					
136A	PUMP,REFRIGERANT (230/460-60HZ) (MEX)	16DF0181075	->	16DF0281075	->
136B	PUMP,REFRIGERANT (575-60HZ) (MEX.)	16DF0181075-1	->	16DF0281075-1	->
136C	PUMP,REFRIGERANT (380-60HZ) (MEX.)	16DF0181075-3	->	16DF0281075-3	->
137	MOTOR REPL. KIT (230/460V ONLY)	16JT660002	->	16JB660031	->
138	FRONT BEARING	16JT680010	->	16JT680011	->
139	DRIVE BEARING	16JT680010	->	16JT680011	->
140	MOTOR RING	16JT680018	->	KK09XD018	->
141	SPRING	16JT680014	->	16JT680015	->
142	CASING RING	16JT680018	->	KK02XC042	->
143	O-RING/GASKET	16JT680008	->	16JT680009	->
144A	IMPELLER (60HZ)	16JT680037	->	16JT680038	->
144B	IMPELLER (50HZ)	NOT AVAIL. AT REL.	->	->	->
145	IMPELLER KEY	16JT680021	->	16JT680022	->
146	IMPELLER LOCKING SCREW	KT592P031	->	->	->
147	IMPELLER WASHER	KT592P021	->	->	->
148	CLIP	16JT680013	->	N/A	->
149A	PUMP,SOLUTION (230/460-60HZ) (MEX.)	16JT0801076	->	->	->
149B	PUMP,SOLUTION (575-60HZ) (MEX.)	16JT0801076-1	->	->	->
149C	PUMP,SOLUTION (380-60HZ) (MEX.)	16JT0801076-3	->	->	->
150	MOTOR REPL. KIT (230/460V ONLY)	16JT660004	->	->	->
151	FRONT BEARING	16JT680011	->	->	->
152	DRIVE BEARING	16JT680012	->	->	->
153	MOTOR RING	16JT680020	->	->	->
154	SPRING	16JT680016	->	->	->
155	CASING RING	KK09XD015	->	->	->
156	O-RING/GASKET	16JT680017	->	->	->
157A	IMPELLER (60HZ)	KK75XA545	->	->	->
157B	IMPELLER (50HZ)	KK75XA549	->	->	->
158	IMPELLER KEY	16JT680007	->	->	->
159	IMPELLER LOCKING SCREW	16JB680048	->	->	->
160	IMPELLER WASHER	16JB680044	->	->	->
161A	PUMP,REFRIGERANT (208-60HZ) (EBARA)	CSP-H02171	->	AAD032-6815X1	->
161B	PUMP,REFRIGERANT (460-60HZ) (EBARA)	CSP-H07891	->	AAD032-6918X1	->
161C	PUMP,REFRIGERANT (480-60HZ) (EBARA)	CSP-H07891	->	AAD032-6919X1	->
162	BEARING,RADIAL	(2) C16JH0108222	(2) ->	(2) ->	(2) ->
163	BEARING,THRUST	(2) C16JH0108212	(2) ->	(2) ->	(2) ->
164	COLLAR,THRUST	(2) C16JH0128202	(2) ->	(2) ->	(2) ->
165	WEAR RING,PUMP CASING	C16JH0128232	->	->	->
166	WEAR RING,MOTOR SIDE	C16JH0128232	->	->	->
167	GASKET,CASING SIDE	C16JA0108532	->	->	->
168	GASKET,END COVER SIDE	C16JH0128532	->	->	->
169	LOCK NUT,IMPELLER	C16JH0109222	->	->	->
170	WASHER,IMPELLER	C16JH0109232	->	->	->
171	KEY,IMPELLER	C16JH0109212	->	->	->
172	O-RING	X	X	X	X
173A	PUMP,SOLUTION (208-60HZ) (EBARA)	AAD025-6835X1	->	AAD032-6835X1	->
173B	PUMP,SOLUTION (460-60HZ) (EBARA)	AAD025-6938X1	->	AAD032-6938X1	->
173C	PUMP,SOLUTION (480-60HZ) (EBARA)	AAD025-6939X1	->	AAD032-6939X1	->
174	BEARING,RADIAL	(2) C16JA0328222	(2) ->	(2) ->	(2) ->
175	BEARING,THRUST	(2) C16JA0328212	(2) ->	(2) ->	(2) ->
176	COLLAR,THRUST	(2) C16JH0328202	(2) ->	(2) ->	(2) ->
177	WEAR RING,PUMP CASING	C16JH0328232	->	->	->
178	WEAR RING,MOTOR SIDE	PART NUMBER REQ	->	->	->
179	GASKET,CASING SIDE	C16JA0978532	->	->	->

PARTS LIST CATALOG

PARTS LIST PAGE: 009

CATALOG NO. : RCD-3516-006 REV.
SUPERSEDES : REV.

NOTE: SEE "CATALOG NOTES" ON LAST PAGE FOR EXPLANATION OF SYMBOLISM.



DIRECT-FIRED DOUBLE
EFFECT LIQUID ABSORPTION
CHILLER

16DF

SIZE: 013 050
SERIES: CMX/EBARA

ITM	PART DESCRIPTION	16DF036	16DF040	16DF045	16DF050
		ALL	ALL	ALL	ALL
GENERAL PARTS LIST					
1A	GAUGE, COMPOUND (MEX.)	16DF04090062	->	->	->
1B	GAUGE, COMPOUND (EBARA)	CO1PP-57421	->	->	->
2	GASKET, ABS. WATERBOX (150#)	(2) 16DF04034043	(2) ->	(2) 16DF05034043	(2) ->
3	GASKET, COND. WATERBOX (150#)	(2) 16DF04044033	(2) ->	(2) 16DF05044033	(2) ->
4	GASKET, EVAP. WATERBOX (150#)	(2) 16DF04034333	(2) ->	(2) 16DF05034333	(2) ->
8	SPRAY NOZZLE (ABSORBER)	(560) 16DF0052813	(560) ->	(676) ->	(676) ->
9	SPRAY NOZZLE (EVAPORATOR)	(160) 16DF0052813	(160) ->	(200) ->	(200) ->
10	SPRAY NOZZLE (CONDENSER)	(108) 16DF0052803	(108) ->	(135) ->	(135) ->
12	TUBE, COPPER (ABSORBER)	(495) 16DF04090103	(554) ->	(716) ->	(639) ->
13	TUBE, COPPER (EVAPORATOR)	(483) 16DF04090203	(534) ->	(662) ->	(597) ->
14	TUBE, COPPER (CONDENSER)	(519) 16DF04090103	(574) ->	(646) ->	(717) ->
15	TUBE, COPPER (SOL. HEAT EXCHANGER)	(695) 16DF04065014	(695) ->	(841) ->	(841) ->
16	TURBULATORS (SOL. HEAT EXCHANGER)	(695) 16DF04065015	(695) ->	(841) ->	(841) ->
17	TUBE, HIGH STAGE GENERATOR	(130) 16DF03251003	(130) ->	(136) 16JR6575282	(136) ->
18	TURBULATOR, HIGH STAGE GENERATOR	(130) 16DF03251103	(130) ->	(136) 16JR6575292	(136) ->
19	SIGHTGLASS (1-1/2")	KH36BZ002	->	->	->
20	EDUCTOR	16JT605753	->	->	->
21	EDUCTOR	16JT610743	->	->	->
22	VALVE, SOLENOID (3/4")	16JT08010300	->	->	->
23	COIL, SOLENOID (3/4")	16JT680035	->	->	->
24	SOLENOID VALVE REPAIR KIT (3/4")	16JT680034	->	->	->
25	VALVE, MOTOR	CSPG07773	->	->	->
26	PALLADIUM CELL	16JRA10476	->	->	->
27	HEATER, PALLADIUM CELL	16DF03224670	->	->	->
28	VALVE, CHECK (1" SOC. WELD)	16DF07024053	->	->	->
29	VALVE, CHECK (1-1/2" SOC. WELD)	16DF07024055	->	->	->
30	VALVE, CHECK (2" SOC. WELD)	16DF07024056	->	->	->
31	VALVE, BALL (1/2" SCREWED)	EP71CQ181	->	->	->
32	VALVE, BALL (1/2" SOC. WELD)	16DF07024010	->	->	->
33	VALVE, BALL (1/2" SOC & NPT)	16DF07024020	->	->	->
34	VALVE, BALL (3/4" SOC. WELD)	(2) 16DF07024011	(2) ->	(2) ->	(2) ->
35	VALVE, BALL (1" SOC. WELD)	16DF07024012	->	->	->
36	VALVE, BALL (1-1/2" SOC. WELD)	16DF07024014	->	->	->
37	VALVE, BALL (2" SOC. WELD)	16DF07024015	->	->	->
38	VALVE, BALL (2-1/2" SOC. WELD)	16DF07024016	->	->	->
39	VALVE, BALL (4" NOM. FLANGED END)	16DF07024000	->	->	->
39A	VALVE, BALL (3" NOM. FLANGED END)	16DF07024003	->	->	->
40	VALVE, DIAPHRAGM (1/2" SCREWED)	EF71CA181	->	->	->
41A	DIAPHRAGM REPLACEMENT (MEX.)	EF792A181	->	->	->
41B	DIAPHRAGM REPLACEMENT (EBARA)	CO1PP-61102	->	->	->
42	VALVE, DIAPHRAGM (1/2" SOC. WELD)	16JT8102472	->	->	->
43A	DIAPHRAGM REPLACEMENT (MEX.)	16JT680024	->	->	->
43B	DIAPHRAGM REPLACEMENT (EBARA)	CO1PP-61102	->	->	->
44	VALVE, DIAPHRAGM (3/4" SOC. WELD)	16JT8102475	->	->	->
45A	DIAPHRAGM REPLACEMENT (MEX.)	16JT680025	->	->	->
45B	DIAPHRAGM REPLACEMENT (EBARA)	CO1PP-61103	->	->	->
46	VALVE, DIAPHRAGM (1" SOC. WELD)	16JT8102473	->	->	->
47A	DIAPHRAGM REPLACEMENT (MEX.)	16JT680026	->	->	->
47B	DIAPHRAGM REPLACEMENT (EBARA)	CO1PP-61104	->	->	->
48	VALVE, DIAPHRAGM (1-1/2" SOC. WELD)	16JT8102476	->	->	->
49A	DIAPHRAGM REPLACEMENT (MEX.)	16JT680028	->	->	->
49B	DIAPHRAGM REPLACEMENT (EBARA)	CO1PP-61105	->	->	->
50	STRAINER (1/2") (WELDED IN PIPE)	16JA010111	->	->	->
51	GASKET	16DF01350134	->	->	->

PARTS LIST CATALOG

PARTS LIST PAGE: 011

CATALOG NO. : RCD-3516-006 REV.
SUPERSEDES : REV.

NOTE: SEE "CATALOG NOTES" ON LAST PAGE FOR EXPLANATION OF SYMBOLISM.



DIRECT-FIRED DOUBLE
EFFECT LIQUID ABSORPTION
CHILLER

16DF

SIZE: 013 050
SERIES: CMX/EBARA

ITM	PART DESCRIPTION	16DF036	16DF040	16DF045	16DF050
		ALL	ALL	ALL	ALL
GENERAL PARTS LIST					
52A	FLOAT VALVE ASY (LCD) (MEX.)	16DF0405161	->	16DF0505161	->
52B	FLOAT VALVE ASY (LCD) (EBARA)	AAD040-5161	->	AAD0505161	->
53	PIN	(2) 16DF04051619	(2) ->	(2) 16DF05051619	(2) ->
54	PIN	16DF04051601	->	16DF05051601	->
55	SHAFT	16DF04051612	->	16DF05051612	->
56	DISC, FLOAT	16DF04051614	->	16DF05051614	->
57	SHAFT	(2) 16DF03251616	(2) ->	(2) 16DF05051616	(2) ->
58	BUSHING, HOUSING	(2) 16DF05051618	(2) ->	(2) ->	(2) ->
59	O-RING	(2) 16DF04051621	(2) ->	(2) 16DF05051621	(2) ->
60	COLLAR, ARM	(2) 16DF04051636	(2) ->	(2) 16DF05051636	(2) ->
61	GASKET	(2) 16DF04051696	(2) ->	(2) 16DF05051681	(2) ->
62	GASKET	16DF04051691	->	16DF05051651	->
63	GASKET	16DF05051691	->	->	->
64A	BALL, FLOAT (MEX.)	16JT8101091	->	16JT8101092	->
64B	BALL, FLOAT (EBARA)	CO1PP-57841	->	CO1PP-57842	->
65	GASKET, LCD COVER	16JS6575422	->	->	->
67	GASKET, SAFETY DOOR	16DF03250146	->	->	->
68	SIGHTGLASS ASY.	16DF0135012	->	->	->
69	COVER, SIGHTGLASS	16DF01350122	->	->	->
70	GASKET, SIGHTGLASS	(2) 16DF01350123	(2) ->	(2) ->	(2) ->
71	SIGHTGLASS	16DF01350124	->	->	->
72	GASKET, SERVICE DOOR	16DF01526011	->	16DF01526021	->
73	GASKET, CHAMBER DOOR	16DF01526021	->	16DF01526031	->
74	CERAMIC SLEEVE	(130) 16DF0285102	(130) ->	(136) ->	(136) ->
75	GASKET, RING (3")	(2) CT992X501	(2) ->	(2) ->	(2) ->
76	GASKET, RING (4")	(2) CT990X601	(2) ->	(2) ->	(2) ->
77	GASKET, RING (8")	CT990X801	->	->	->
78	RUPTURE DISC KIT (CARBON)(W/GASKETS)	1704317	->	->	->
79	GASKET, RUPTURE DISC	(2) CR90S2002	(2) ->	(2) ->	(2) ->
80	DISC, RUPTURE	EB59LX015	->	->	->
81	RUPTURE DISC (METALIC)	16DF0322014	->	->	->
82	GASKET, RUPTURE DISC (METALIC)	(2) CT992X501	(2) ->	(2) ->	(2) ->
83	CERAMIC BLANKET	16DF04059502	->	16DF05059502	->
84	CERAMIC INSALATION	16DF04059503	->	16DF05059503	->
85	ADHESIVE, CERAMIC	CO1PP-6164	->	->	->
MECHANICAL CONTROLS GROUP					
86A	CONTROL PANEL (230V)	16DF013-7001	->	->	->
86B	CONTROL PANEL (380V)	16DF013-7005	->	->	->
86C	CONTROL PANEL (460V)	16DF013-7003	->	->	->
86D	CONTROL PANEL (575V)	16DF013-7007	->	->	->
87	ELAPSE TIME METER (ETM) (CARRIER-R)	19EA660035	->	->	->
88	ALARM (HORN) (MALLORY)	SC-110-P	->	->	->
89	INDICATOR LIGHT BODY (DIALCO)	103-3101-05-4	->	->	->
90	RED LENS (DIALCO)	103-1211-403	->	->	->
91	PUSH-BUTTON (GREEN) (ALLEN-BRADLEY)	800T-A1D1	->	->	->
92	PUSH-BUTTON (RED) (ALLEN-BRADLEY)	800T-B6D2	->	->	->
93	HANDLE, DISCONNECT (DISC) (SQUARE D)	9421-LN1	->	->	->
94	HANDLE, DOOR (HOFFMAN)	A-12CCN	->	->	->
95	MICROPROCESSOR BOARD (PK3) (EBARA)	RAD015-95083	->	->	->
96	MICROPROCESSOR BOARD (PK2) (EBARA)	RAD015-95053	->	->	->
97	MICROPROCESSOR BOARD (PK1) (EBARA)	RAD015-95018	->	->	->
98	TERMINAL BLOCK (TB1) (ALLEN-BRADLEY)	(110) 1492-H1	(110) ->	(110) ->	(110) ->
99	TERMINAL BLOCK (TB2) (ALLEN-BRADLEY)	(18) 1492-CA2	(18) ->	(18) ->	(18) ->
100	TERMINAL BLOCK (TB3) (ALLEN-BRADLEY)	(3) 1492-CD2	(3) ->	(3) ->	(3) ->

PARTS LIST CATALOG

PARTS LIST PAGE: 012

CATALOG NO.: RCD-3516-006 REV.
SUPERSEDES: REV.

NOTE: SEE "CATALOG NOTES" ON LAST PAGE FOR EXPLANATION OF SYMBOLISM.



DIRECT-FIRED DOUBLE
EFFECT LIQUID ABSORPTION
CHILLER

16DF

SIZE: 013 050
SERIES: CMX/EBARA

ITM	PART DESCRIPTION	16DF036	16DF040	16DF045	16DF050
		ALL	ALL	ALL	ALL
MECHANICAL CONTROLS GROUP					
101	TIMER SOCKET (TS1) (ATC)	00008256900	->	->	->
102	SOLID STATE TIMER (ATC)	328B-200-Q10-XX	->	->	->
103	FILTER (NF1) (LAMBDA)	MBW-1203-22	->	->	->
104	RELAY,120VAC (RY1-5) (P & B)	(5) KUP-14A35-120VAC	(5) ->	(5) ->	(5) ->
105	RELAY,24VDC (RYZ) (P & B)	KUP-14D15-24VDC	->	->	->
106	FUSE BLOCK (FB6,FB7) (MARATHON)	(2) 6M30A3SPQ	(2) ->	(2) ->	(2) ->
107	FUSE BLOCK (FB5) (MARATHON)	F30A2SP	->	->	->
108	FUSE (F5/F5A) (LITTLE FUSE/BUSSMAN)	FLNR-5/FRN-5	->	->	->
109A	FUSE (F6) (BUSSMAN) (230V)	(3) CCMR-50	(3) ->	(3) ->	(3) ->
109B	FUSE (F6) (BUSSMAN) (380V)	(3) CCMR-25	(3) ->	(3) ->	(3) ->
109C	FUSE (F6) (BUSSMAN) (460V)	(3) CCMR-25	(3) ->	(3) ->	(3) ->
109D	FUSE (F6) (BUSSMAN) (575V)	(3) CCMR-20	(3) ->	(3) ->	(3) ->
110A	FUSE (F7) (BUSSMAN) (230V)	(3) CCMR-6	(3) ->	(3) ->	(3) ->
110B	FUSE (F7) (BUSSMAN) (380V)	(3) CCMR-3	(3) ->	(3) ->	(3) ->
110C	FUSE (F7) (BUSSMAN) (460V)	(3) CCMR-3	(3) ->	(3) ->	(3) ->
110D	FUSE (F7) (BUSSMAN) (575V)	(3) CCMR-3	(3) ->	(3) ->	(3) ->
111	POWER SUPPLY (SWR-1) (POWER ONE)	HCBB-75W-A	->	->	->
112	POWER SUPPLY (SWR-2) (POWER ONE)	HC-24-2.4A	->	->	->
113	TRANSFORMER (TR2) (HEVI-DUTY)	E105	->	->	->
114	TRANSFORMER (TR3) (HEVI-DUTY)	E275	->	->	->
115	TRANSFORMER (TR4) (MAGNETEK)	VPS24-1000	->	->	->
116	TRANSFORMER (TR5) (MAGNETEK)	VPS16-1600	->	->	->
117	STARTER (88SP,88RP) (CUTLER-HAMMER)	(2) A16DNOA	(2) ->	(2) ->	(2) ->
118A	HEATER OVERLOAD (51SP) (230V)	(3) HN71JC069	(3) ->	(3) ->	(3) ->
118B	HEATER OVERLOAD (51SP) (380V)	(3) HN71JC061	(3) ->	(3) ->	(3) ->
118C	HEATER OVERLOAD (51SP) (460V)	(3) HN71JC055	(3) ->	(3) ->	(3) ->
118D	HEATER OVERLOAD (51SP) (575V)	(3) HN71JC052	(3) ->	(3) ->	(3) ->
119A	HEATER OVERLOAD (51RP) (230V)	(3) HN71JC061	(3) ->	(3) ->	(3) ->
119B	HEATER OVERLOAD (51RP) (380V)	(3) HN71JC055	(3) ->	(3) ->	(3) ->
119C	HEATER OVERLOAD (51RP) (460V)	(3) HN71JC050	(3) ->	(3) ->	(3) ->
119D	HEATER OVERLOAD (51RP) (575V)	(3) HN71JC043	(3) ->	(3) ->	(3) ->
120A	CIRCUIT BRKR (MCB1)(SQUARE D)(230V)	FAL-100	->	->	->
120B	CIRCUIT BRKR (MCB1)(SQUARE D)(380V)	FAL-80	->	->	->
120C	CIRCUIT BRKR (MCB1)(SQUARE D)(460V)	FAL-80	->	->	->
120D	CIRCUIT BRKT (MCB1)(SQUARE D)(575V)	FAL-80	->	->	->
121A	CIRCUIT BRKT (MCB2)(SQUARE D)(230V)	FAL-15	->	->	->
121B	CIRCUIT BRKT (MCB2)(SQUARE D)(380V)	FAL-15	->	->	->
121C	CIRCUIT BRKT (MCB2)(SQUARE D)(460V)	FAL-15	->	->	->
121D	CIRCUIT BRKT (MCB2)(SQUARE D)(575V)	FAL-15	->	->	->
122	STARTER BOX,VACUUM PUMP	16DF0051502	->	->	->
123	STARTER (88VP)	PART NUMBER N/A	->	->	->
124	HEATER OVERLOADS (51VP)	PART NUMBER N/A	->	->	->
125	FUSE BLOCK (F10)	PART NUMBER N/A	->	->	->
126	FUSE (F10)	PART NUMBER N/A	->	->	->
127	TRANSMITTER,TEMP. (100 DEG.)	(4) 16DF01311313	(4) ->	(4) ->	(4) ->
128	TRANSMITTER,TEMP. (200 DEG.)	16DF01311333	->	->	->
129	SWITCH,HIGH PRESS.(HW HEAT EXCHANGER)	P70CA-4C	->	->	->
130	SWITCH,HIGH TEMP.(SOLUTION TEMP.)	11806-46	->	->	->
131	SWITCH,LOW CHILLED WATER TEMP.(EVAP)	16JT8106656	->	->	->
132	SWITCH,HIGH TEMP. (EXHAUST GAS)	CO1PP-57492	->	->	->
133	SWITCH,HIGH TEMP.(SMOKE CHAMBER)	16DF02020350	->	->	->
134	FLOW SWITCH	HK06ZC033	->	->	->
135	LEVEL PROBE	(2) 16JT660001	(2) ->	(2) ->	(2) ->



DIRECT-FIRED DOUBLE
EFFECT LIQUID ABSORPTION
CHILLER

16DF

SIZE: 013 050
SERIES: CMX/EBARA

ITM	PART DESCRIPTION	16DF036	16DF040	16DF045	16DF050
		ALL	ALL	ALL	ALL
PUMP GROUP					
136A	PUMP,REFRIGERANT (230/460-60HZ) (MEX)	16JT0801075	->	->	->
136B	PUMP,REFRIGERANT (575-60HZ) (MEX.)	16JT0801075-1	->	->	->
136C	PUMP,REFRIGERANT (380-60HZ) (MEX.)	16JT0801075-3	->	->	->
137	MOTOR REPL. KIT (230/460V ONLY)	16JB660032	->	->	->
138	FRONT BEARING	16JT680011	->	->	->
139	DRIVE BEARING	16JT680011	->	->	->
140	MOTOR RING	KK09XD020	->	->	->
141	SPRING	16JT680015	->	->	->
142	CASING RING	KK09XD015	->	->	->
143	O-RING/GASKET	16JT680009	->	->	->
144A	IMPELLER (60HZ)	KK75XA602	->	->	->
144B	IMPELLER (50HZ)	KK75XA604	->	->	->
145	IMPELLER KEY	16JT680006	->	->	->
146	IMPELLER LOCKING SCREW	KT592P031	->	->	->
147	IMPELLER WASHER	KT592P021	->	->	->
148	CLIP	16JT680015	->	->	->
149A	PUMP,SOLUTION (230/460-60HZ) (MEX.)	16JT0901076	->	16JT8541076	->
149B	PUMP,SOLUTION (575-60HZ) (MEX.)	16JT0901076-1	->	16JT8541076-1	->
149C	PUMP,SOLUTION (380-60HZ) (MEX.)	16JT0901076-3	->	16JT8541076-3	->
150	MOTOR REPL. KIT (230/460V ONLY)	16JT660004	->	->	->
151	FRONT BEARING	16JT680011	->	->	->
152	DRIVE BEARING	16JT680012	->	->	->
153	MOTOR RING	16JT680020	->	->	->
154	SPRING	16JT680016	->	->	->
155	CASING RING	KK09XD015	->	->	->
156	O-RING/GASKET	16JT680017	->	->	->
157A	IMPELLER (60HZ)	KK75XA596	->	KK75XA594	->
157B	IMPELLER (50HZ)	KK75XA599	->	NOT AVAIL. AT REL.	->
158	IMPELLER KEY	16JT680007	->	->	->
159	IMPELLER LOCKING SCREW	16JB680048	->	->	->
160	IMPELLER WASHER	16JB680044	->	->	->
161A	PUMP,REFRIGERANT (208-60HZ) (EBARA)	AAD040-6815X1	->	->	->
161B	PUMP,REFRIGERANT (460-60HZ) (EBARA)	AAD040-6918X1	->	->	->
161C	PUMP,REFRIGERANT (480-60HZ) (EBARA)	AAD040-6919X1	->	->	->
162	BEARING,RADIAL	(2) C16JA0108222	(2) ->	(2) ->	(2) ->
163	BEARING,THRUST	(2) C16JA0108212	(2) ->	(2) ->	(2) ->
164	COLLAR,THRUST	(2) C16JH0148202	(2) ->	(2) ->	(2) ->
165	WEAR RING,PUMP CASING	CAD04068232	->	->	->
166	WEAR RING,MOTOR SIDE	CAN04068232	->	->	->
167	GASKET,CASING SIDE	C16JA0108532	->	->	->
168	GASKET,END COVER SIDE	C16JA0109242	->	->	->
169	LOCK NUT,IMPELLER	CAD04069222	->	->	->
170	WASHER,IMPELLER	CAD04069232	->	->	->
171	KEY,IMPELLER	C16JA0109212	->	->	->
172	O-RING	(2) C16JA0108262	(2) ->	(2) ->	(2) ->
173A	PUMP,SOLUTION (208-60HZ) (EBARA)	AAD040-6835X1	->	AAD050-6835X1	->
173B	PUMP,SOLUTION (460-60HZ) (EBARA)	AAD040-6938X1	->	AAD050-6938X1	->
173C	PUMP,SOLUTION (480-60HZ) (EBARA)	AAD040-6939X1	->	AAD050-6939X1	->
174	BEARING,RADIAL	(2) C16JA0978222	(2) ->	(2) ->	(2) ->
175	BEARING,THRUST	(2) C16JA0978212	(2) ->	(2) ->	(2) ->
176	COLLAR,THRUST	(2) C16JH0418202	(2) ->	(2) ->	(2) ->
177	WEAR RING,PUMP CASING	C16JA0328232	->	->	->
178	WEAR RING,MOTOR SIDE	C16JH0418232	->	->	->
179	GASKET,CASING SIDE	C16JA0978532	->	->	->

PARTS LIST CATALOG

PARTS LIST PAGE: 014

CATALOG NO.: RCD-3516-006 REV.
SUPERSEDES : REV.

NOTE: SEE "CATALOG NOTES" ON LAST PAGE FOR EXPLANATION OF SYMBOLISM.

