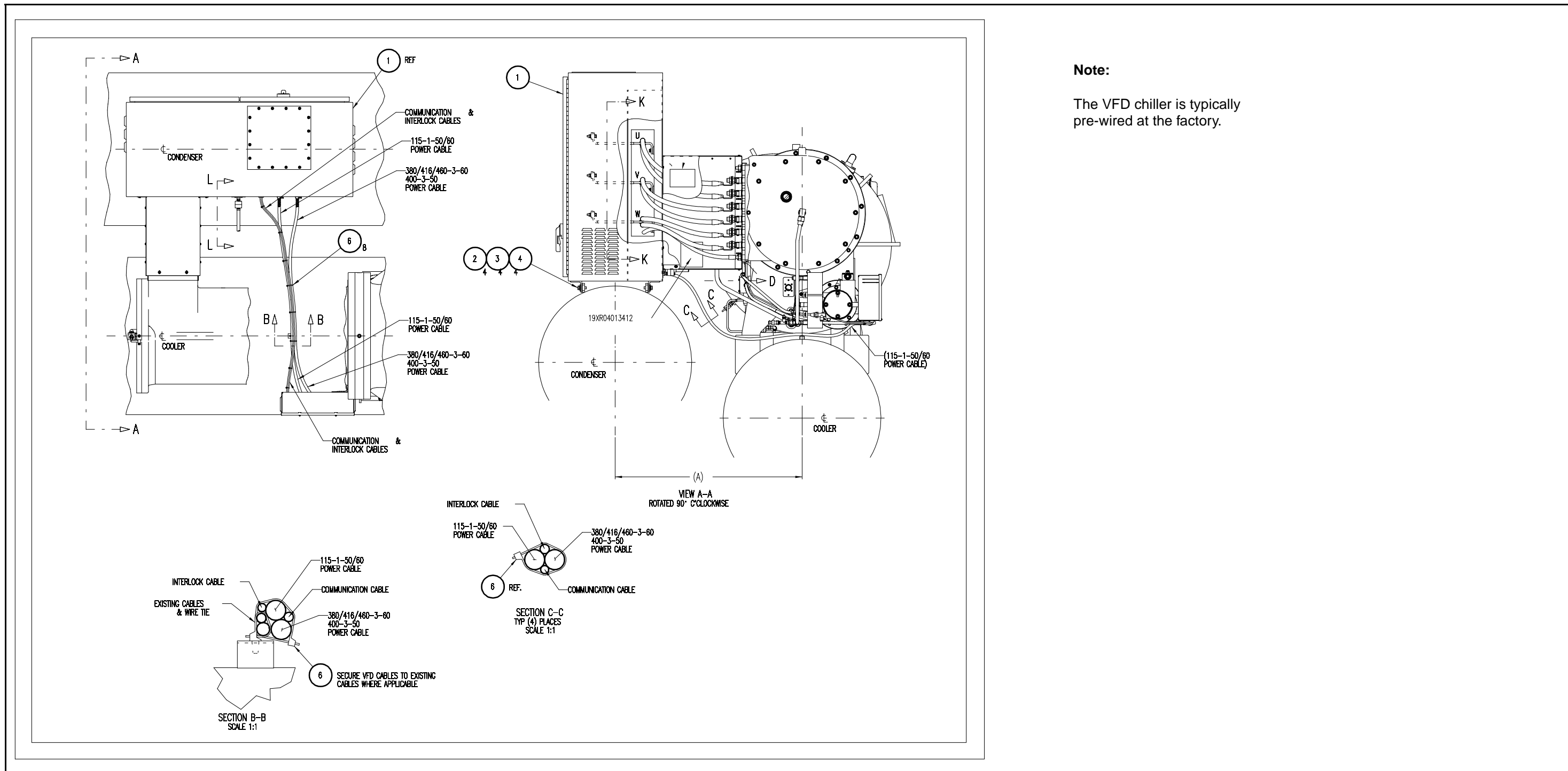


Identifying Drive Components Using Reference Drawings and Parts Lists

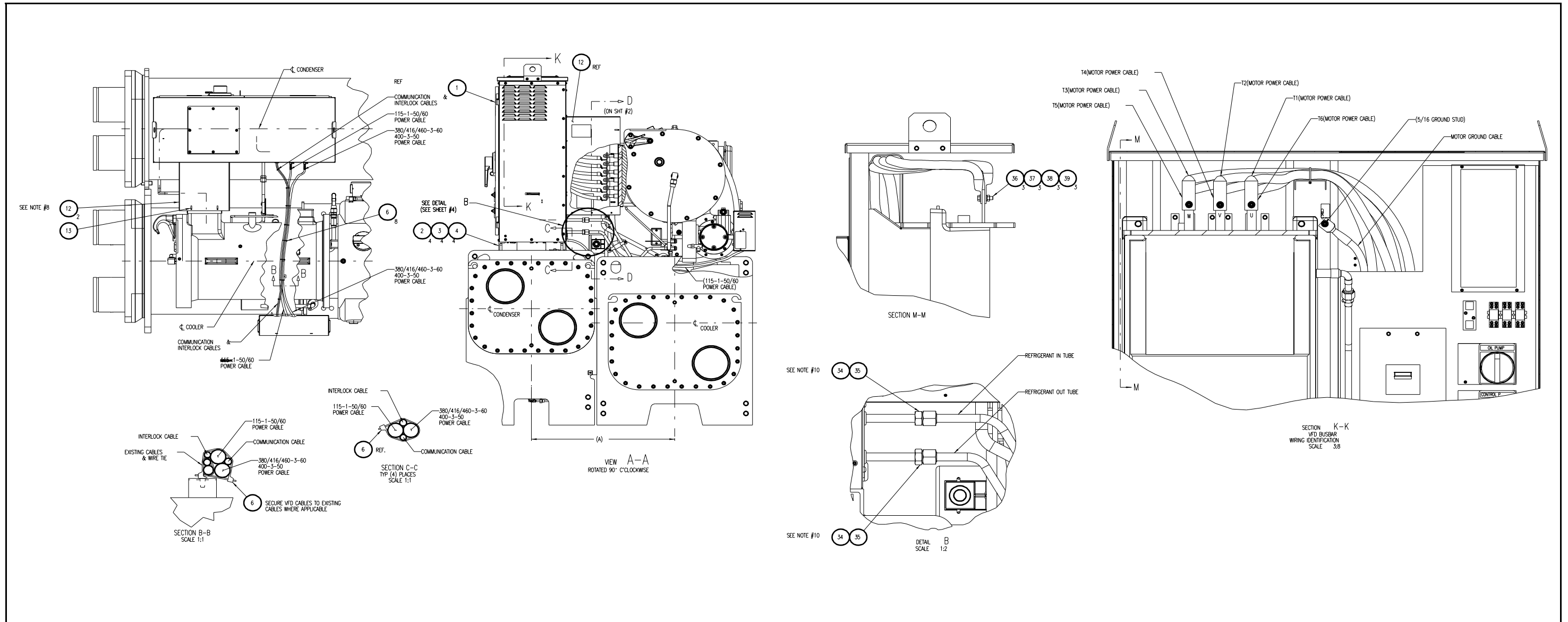
2.1 VFD Chiller Installation Drawing (500A and 643A VFD)



Note:

The VFD chiller is typically pre-wired at the factory.

VFD Chiller Installation Drawing (414A VFD)



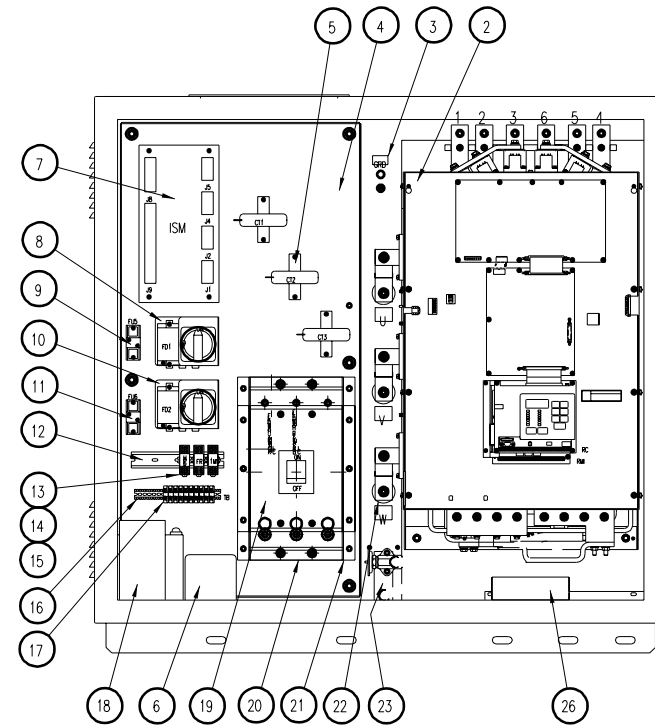
2.2 Front View of 500 and 643 Amp VFD with Parts List (19XV04000601 rev 4.0)

ITEM	QTY	DESCRIPTION	SUPPLIER	SUPPLIER PART NO.
1	1	ENCLOSURE, 46H" X 50W" X 22D"	KOESTER	807300-268A
2 (NOTE 1)	1	DRIVE MODULE, 500 AMP	RELIANCE	50LR4060-C
	4	BOLT, FLAT AND LOCKWASHERS		
2 (NOTE 2)	1	DRIVE MODULE, 643 AMP	RELIANCE	64LR4060-C
	4	BOLT, FLAT AND LOCKWASHERS		
	1	GROUND LUG, 1/0 TO 4/0	RELIANCE	68321-38AD
	1	NUT, FLAT AND LOCKWASHER		
	1	GREEN GRD WIRE, 4/0 PANEL TO STUD	RELIANCE	
	1	GROUND LABEL	RELIANCE	410267-12A
	1	COMPONENT MOUNTING PANEL	KOESTER	807300-268C
	6	NUT, FLAT AND LOCKWASHERS	RELIANCE	
	3	CURRENT TRANSFORMER, 800/5 (CT1, 2, 3)	RELIANCE	616300-245A
	6	MOUNTING BOLTS		
6 (OPTION)	4	XFMR, 150VA, 460 TO 150V (PT1, PT2)	ALLEN BRADLEY	25646-001-02
	4	MOUNTING BOLTS		
	1	INTEGRATED STARTER MODULE (ISM)	UTEC	CES0130037
	4	MOUNTING BOLTS		
	1	SW, FUSED, 3 POLE, 600V, 30A RATED (FD1)	ALLEN BRADLEY	194R-NJ030P3
	1	MOUNTING BRACKET	RELIANCE	710300-250A
	2	SWITCH / BRACKET MOUNTING BOLTS	RELIANCE	
	1	LABEL "OIL PUMP"	RELIANCE	616300-251B
	1	SW HANDLE	ALLEN BRADLEY	194R-HS1E
	2	HANDLE MOUNTING BOLTS	RELIANCE	
	1	SW SHAFT	ALLEN BRADLEY	194R-R1
	3	FUSE, CLASS J, 600V 6A	RELIANCE	64676-75W
	1	FUSE, CLASS M, 250V 10A (FU5)	RELIANCE	64676-1BJ
	1	FUSE BLOCK, CLASS M, 250V, 30A, 1 LINE	RELIANCE	49454-20A
	2	FUSE BLOCK MOUNTING BOLTS		
	1	SW, FUSED, 3 POLE, 600V, 30A RATED (FD2)	ALLEN BRADLEY	194R-NJ030P3
	1	MOUNTING BRACKET	RELIANCE	710300-250A
	2	SWITCH / BRACKET MOUNTING BOLTS	RELIANCE	
	1	LABEL "CONTROL POWER"	RELIANCE	616300-251A
	1	SW HANDLE	ALLEN BRADLEY	194R-HS1E
	2	HANDLE MOUNTING BOLTS	RELIANCE	
	1	SW SHAFT	ALLEN BRADLEY	194R-R1
	3	FUSE, CLASS J, 600V 10A	RELIANCE	64676-75AB
	1	FUSE, CLASS M, 250V 30A (FU6)	RELIANCE	64676-1Z
	1	FUSE BLOCK, CLASS M, 250V, 30A, 1 LINE	RELIANCE	49454-20A
	2	FUSE BLOCK MOUNTING BOLTS		
	1	RELAY DIN RAIL	ALLEN BRADLEY	199DR1
	2	RELAY DIN RAIL MOUNTING BOLTS		
	1	HPR RELAY, (2) FORM C, 24 VAC COIL	ALLEN BRADLEY	700-HF32A24
	1	HPR SPRING CLIP	ALLEN BRADLEY	700-HF114
	1	HPR RELAY SOCKET	ALLEN BRADLEY	700-HF116
	1	FR RELAY, (2) FORM C, 110 VAC COIL	ALLEN BRADLEY	700-HF32A1
	1	FR SPRING CLIP	ALLEN BRADLEY	700-HF114
	1	FR RELAY SOCKET	ALLEN BRADLEY	700-HF116
	1	1M RELAY, (2) FORM C, 110 VAC COIL	ALLEN BRADLEY	700-HF32A1
	1	1M SPRING CLIP	ALLEN BRADLEY	700-HF114
	1	1M RELAY SOCKET	ALLEN BRADLEY	700-HF116
	1	TB DIN RAIL	ALLEN BRADLEY	1492-N1
	2	TB DIN RAIL MOUNTING BOLTS	ALLEN BRADLEY	
	10	TB, 600V 20A	ALLEN BRADLEY	1492-CA1
	1	TB, END BARRIER	ALLEN BRADLEY	1492-N16
	2	TB, END ANCHOR	ALLEN BRADLEY	1492-N47
	1	XFMR, 3 KVA, 230/460V TO 115V (CPT)	RELIANCE	417155-X
	4	MOUNTING BOLTS FLAT AND LOCKWASHERS		
	1	DS, 3 POLE 600V 600A, MCS	RELIANCE	807300-303A
19 (NOTE #1)	4	DS MOUNTING BOLTS	RELIANCE	616300-242
	1	LOAD SIDE INSULATOR	RELIANCE	710300-246R
19 (NOTE #2)	1	DS, 3 POLE 600V 800A, MCS	RELIANCE	807300-303B
	4	DS MOUNTING BOLTS		
	1	LOAD SIDE INSULATOR	RELIANCE	616300-242
	1	DS TO DRV CABLES, "R" TO 1	RELIANCE	710300-246R
	1	DS TO DRV CABLES, "R" TO 4	RELIANCE	710300-246S
	1	DS TO DRV CABLES, "S" TO 2	RELIANCE	710300-246T
	1	DS TO DRV CABLES, "S" TO 5	RELIANCE	710300-246U
	1	DS TO DRV CABLES, "T" TO 3	RELIANCE	710300-246V
	1	DS TO DRV CABLES, "T" TO 6	RELIANCE	710300-246W
21 (NOTE#1)	1	DS MOUNTING BRACKET, 600 A SWITCH	RELIANCE	807300-299A
21 (NOTE#2)	4	DS BRACKET MOUNTING BOLTS		
	1	DS MOUNTING BRACKET, 800 A SWITCH	RELIANCE	807300-299B
	4	DS BRACKET MOUNTING BOLTS		
	3	OUTPUT BUS BARS, 1.5 X 3/8 FORMED	RELIANCE	807300-294A
	3	BUS BAR TO DRIVE MOUNTING BOLTS	RELIANCE	
	3	BUS BAR NUTS FLAT AND LOCKWASHERS	RELIANCE	
	3	BUS BAR TO STANDOFF MOUNTING BOLTS	RELIANCE	
	3	STANDOFFS, GLASTIC INSULATORS	RELIANCE	600856-A
	2	COOLANT SUPPORT PLATES	RELIANCE	616300-241A
	1	ENCLOSURE FAN, 115VAC, 235CFM	RELIANCE	103044-7
26	1	FAN GUARD	RELIANCE	175179
	3	MOUNTING BOLTS		

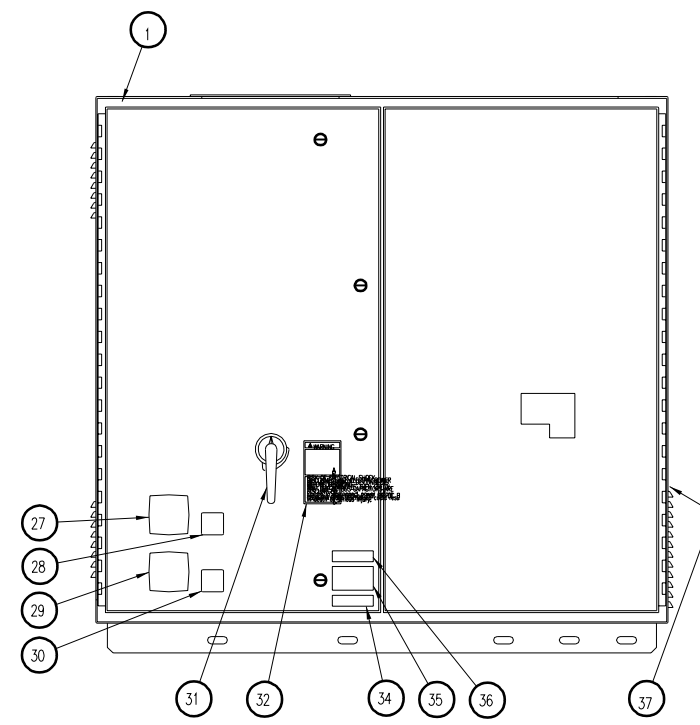
27 (OPTION)	1	AC VOLTMETER 0-600 V	ALLEN BRADLEY	22951-003-01
28 (OPTION)	1	AC VOLTMETER SWITCH	ALLEN BRADLEY	25135-012-01
29 (OPTION)	1	AC AMMETER 0-800 A	ALLEN BRADLEY	22901-002-18
30 (OPTION)	1	AC AMMETER SWITCH	ALLEN BRADLEY	25135-011-01
NOT SHOWN	2	CURRENT TRANSFORMERS, AMMETER	ALLEN BRADLEY	25645-008-10
31 (NOTE#1)	1	DS HANDLE KIT, HANDLE AND SHAFT	RELIANCE	77800-22W
31 (NOTE#2)	1	DS HANDLE KIT, HANDLE AND SHAFT	RELIANCE	77800-28X
	32	WARNING LABEL	RELIANCE	616300-250A
	33			
	34	ULC-UL100C CERTIFICATION LABEL	RELIANCE	SEE M/N
35 (NOTE#1)	1	RATING NAMEPLATE, 500 A UNIT	RELIANCE	616300-243A
35 (NOTE#2)	1	RATING NAMEPLATE, 643 A UNIT	RELIANCE	616300-243B
	36	CARRIER, MANUFACTURED TO Z-417 LABEL	RELIANCE	616300-252A
	37	CARRIER, VFD ORDER CODE	RELIANCE	616300-253A

ITEM	QTY	DESCRIPTION	SUPPLIER	PART NO.
OPTIONAL DISCONNECT				
19 (NOTE#1)	1	DS, 3 POLE 600 V 600 A, MAG ONLY	RELIANCE	807300-311A
	4	DS MOUNTING BOLTS		
19 (NOTE#2)	1	DS, 3 POLE 600 V 800 A, MAG ONLY	RELIANCE	807300-311B
	4	DS MOUNTING BOLTS		
CONTROL CABLES				
	1	INTERLOCK CABLE ASSEMBLY	CARRIER	19XV04000604
	1	COMMUNICATION CABLE ASSEMBLY	CARRIER	19XV04000605
	1	115V 50/60HZ POWER CABLE ASSY	CARRIER	19XV04000606
	1	200/575-3-50/60 HZ CABLE ASSY	CARRIER	19XV04000607
	1	SET OF LABELS TO ID COMP, "HPR" etc	RELIANCE	
	1	EDGING FOR MOTOR LEAD OPENINGS	RELIANCE	
	2	DOOR GROUNDING CABLES, 10 AWG	RELIANCE	
	1	SHIPPING LABEL	RELIANCE	

NOTE 1: USE FOR THE 500 AMP UNIT, NOTE 2: USE FOR THE 643 AMP UNIT.



FRONT VIEW W/O DOORS



FRONT VIEW WITH DOORS

Notes:

Refer to section 2.3 for drive module parts.

Replacement parts not in the drive module are available from Reliance Electric.

Call 1-888-DRIVES-0.

Note: Use this phone number only for replacement parts listed on this page.

2.3 500 Amp and 643 Amp 19XRV Drive Module Component Locations and Parts List

Note: When replacing the Regulator board, verify that jumper J4 is on pins 1 and 2, as shown in the detail below. You also may need to perform an initialization procedure. See section 6.7 of instruction manual D2-3411 for more information.

Regulator Board Detail

Set jumper J4 to pins 1 and 2.

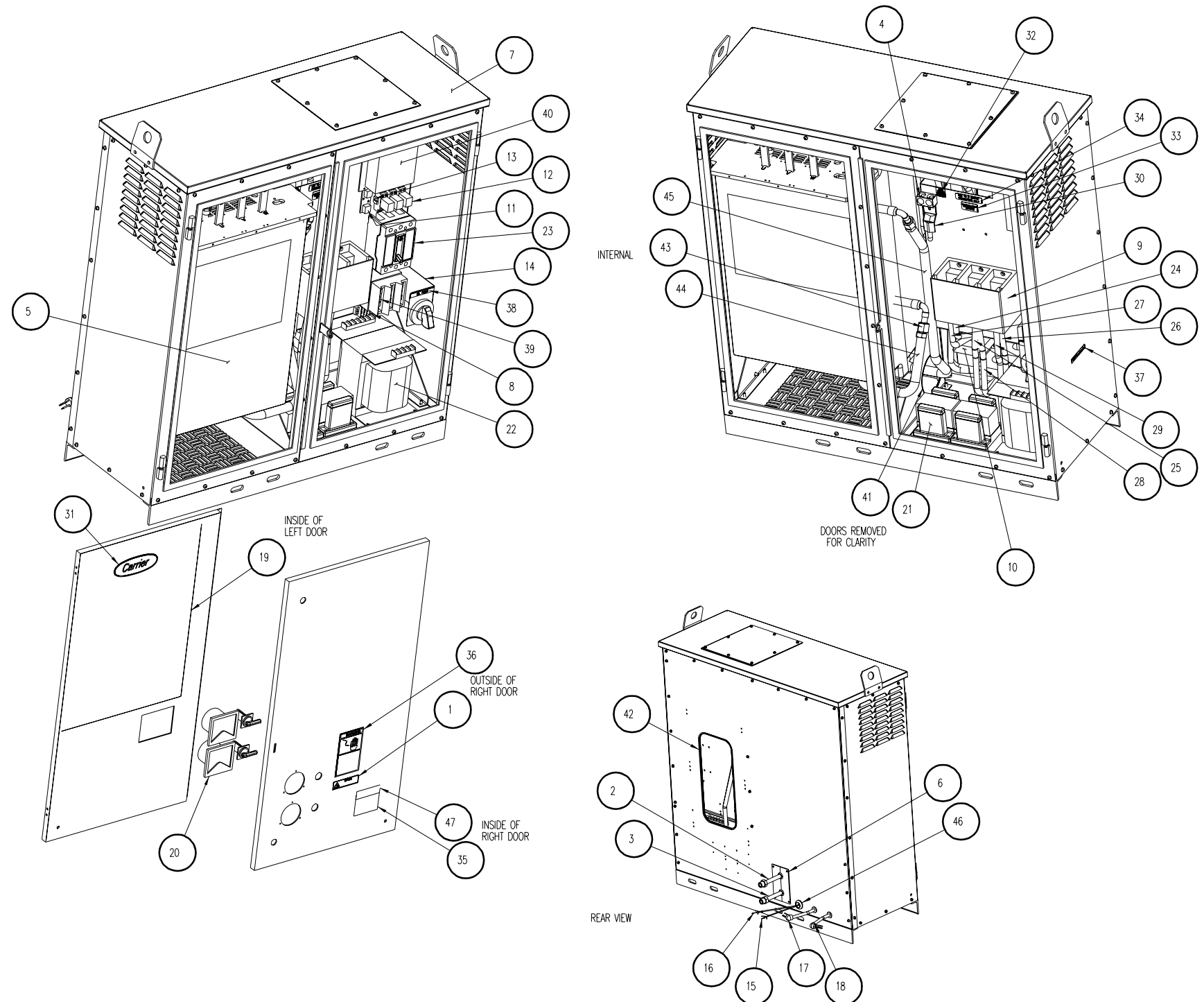
Regulator Board

Item #	Description	Rockwell Automation Part #	Qty
1	Bus Bars (AC Input)	n/a	6
2	SCR Module	22501-025-04	1
3	Power Module Adapter (PCB) 500 A Frame	179134	1
	Power Module Adapter (PCB) 643 A Frame	179067	1
4	Power Interface Harness	179058	
5	Bus Bars (AC Output)	n/a	3
6	LEM Interface Harness	179061	1
7	DC Bus Control PCB	179069	1
8	Gate Driver PCB - Low Side	179065	
9	DC Bus Laminate Assembly	n/a	1
10	Current Feedback Devices	25503-011-01	3
11	IGBT Modules	n/a	6
12	Chillplate (Heatsink)	n/a	1
13	Capacitors	n/a	36
14	Drive Baseplate	n/a	1
15	Coolant Lines (not shown)	n/a	2
16	Discharge Resistor (not shown)	n/a	3
17	Control Panel Assembly	n/a	1
18	Bus Control - PMA Harness	179057	1
19	Bus Control - Gate Driver Harness	179055	1
20	Gate Driver PCB - High Side (not shown)	170065	1
21	Membrane Switch Keypad/Bracket	410483-15B	1
22	Regulator PCB	179116	1
23	Remote Meter Interface (RMI) PCB	814.56.00	1
24	Reactor (not shown)	n/a	1
(not shown)	Gate Driver Jumper Harness	179056	1
(not shown)	SCR (S1, S2, S3) Gate Interface Harness	179059	1
(not shown)	SCR (S4, S5, S6) Gate Interface Harness	179060	1
(not shown)	Laminate PMA Interface Harness	179062	1
(not shown)	Chillplate Interface Harness	179063	1

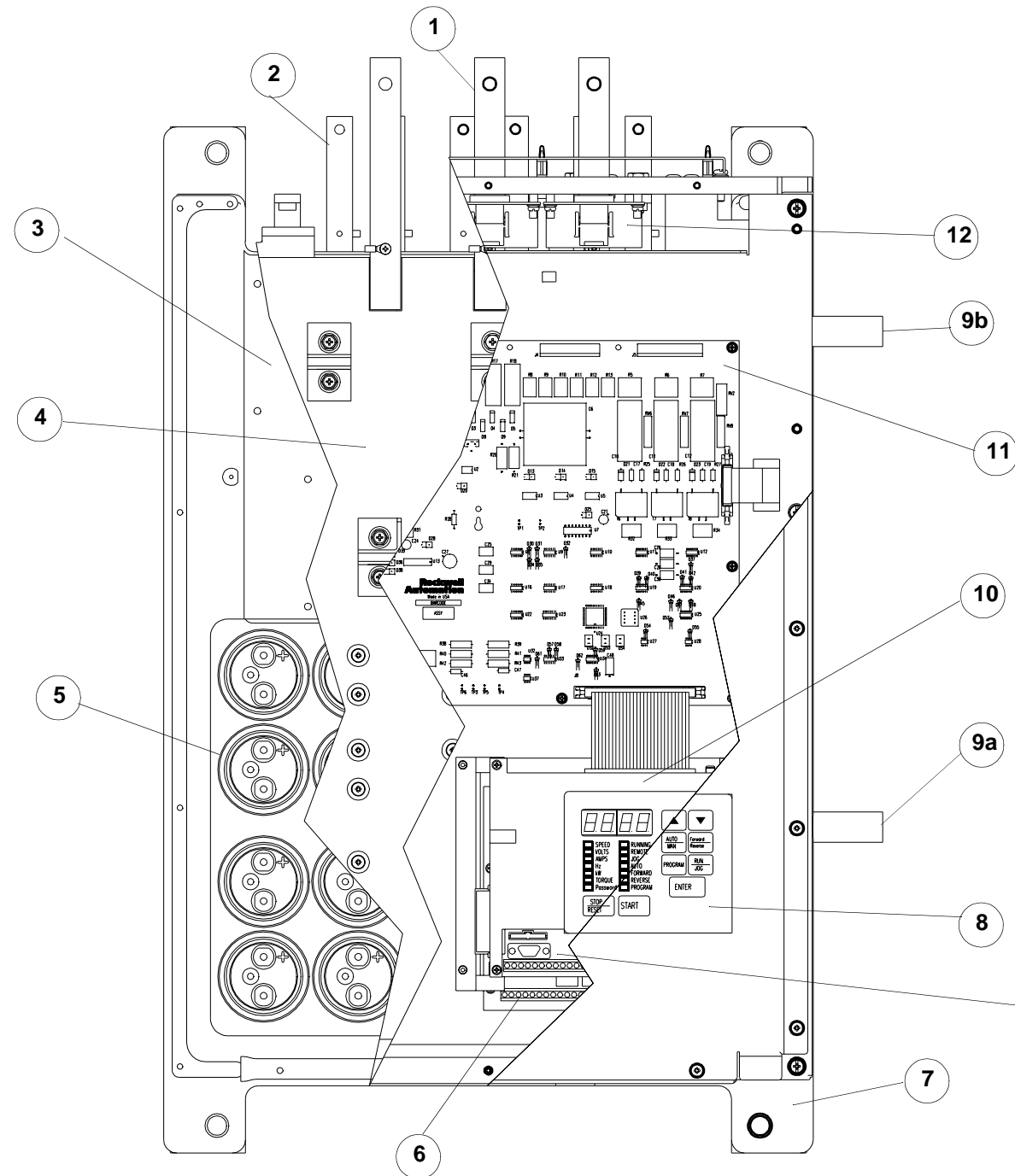
Contact Reliance Electric at 1-440-646-6650 for replacement parts.
Note: Use this phone number only for replacement parts listed on this page.

2.4 Front View of 414 Amp VFD with Parts List (19XV04003001 rev 2.0)

Item	Description	Component Number	Quantity									
			19XVR0414100	19XVR0414101	19XVR0414102	19XVR0414103	19XVR0414200	19XVR0414201	19XVR0414202	19XVR0414203		
1	Warning Label	179725-8	1	x	1	x	1	x	1	x	1	x
		610293-201A	x	1	x	1	x	1	x	1	x	1
2	Tube Assembly	19XR04021301	1	1	1	1	1	1	1	1	1	1
3	Tube Assembly	19XR04021401	1	1	1	1	1	1	1	1	1	1
4	Customer Ground	19XR05023001	1	1	1	1	1	1	1	1	1	1
5	Drive Unit	19XR04003201	1	1	1	1	1	1	1	1	1	1
6	Plate Assembly	19XR04003301	1	1	1	1	1	1	1	1	1	1
7	VFD Assembly	19XR05004801	1	x	1	x	1	x	1	x	1	x
		19XR05004802	x	1	x	1	x	1	x	1	x	1
8	Terminal Strip	19XR05005001	1	1	1	1	1	1	1	1	1	1
9	Terminal Block	19XR05005101	1	x	1	x	1	x	1	x	1	x
		19XV05004901	x	1	x	1	x	1	x	1	x	1
10	Transformer, Current	19XR05005201	3	3	3	3	3	3	3	3	3	3
11	Fuse Assembly	19XR05005401	1	1	1	1	1	1	1	1	1	1
12	Relay Socket	19XR05005502	2	2	2	2	2	2	2	2	2	2
13	Relay Socket	19XR05005503	1	1	1	1	1	1	1	1	1	1
14	Disconnect Switch	19XR05005601	1	1	1	1	1	1	1	1	1	1
15	Cable Assembly	19XR05005701	1	1	1	1	1	1	1	1	1	1
16	Cable Assembly	19XR05005801	1	1	1	1	1	1	1	1	1	1
17	Cable Assembly	19XR05005901	1	1	1	1	1	1	1	1	1	1
18	Cable Assembly	19XR05006001	1	1	1	1	1	1	1	1	1	1
19	Label, Wiring	19XR05006301	1	1	1	1	1	1	1	1	1	1
20	Meter Kit	19XR05006601	x	x	1	1	x	x	1	1	1	1
21	Potential Transformer	19XR05007101	x	x	2	2	x	x	2	2	2	2
22	Transformer	19XR05007201	1	1	1	1	1	1	1	1	1	1
23	Circuit Breaker	19XR05007501	1	1	1	1	1	1	1	1	1	1
24	Cable - L1	19XV04003801_MU	1	1	1	1	1	1	1	1	1	1
25	Cable - L2	19XV04003802_MU	1	1	1	1	1	1	1	1	1	1
26	Cable - L3	19XV04003803_MU	1	1	1	1	1	1	1	1	1	1
27	Cable - L4	19XV04003804_MU	1	1	1	1	1	1	1	1	1	1
28	Cable - L5	19XV04003805_MU	1	1	1	1	1	1	1	1	1	1
29	Cable - L6	19XV04003806_MU	1	1	1	1	1	1	1	1	1	1
30	Ground Cable	19XV04003901_MU	1	1	1	1	1	1	1	1	1	1
31	Label	23XL05005303	1	1	1	1	1	1	1	1	1	1
32	Label	410267-12	1	1	1	1	1	1	1	1	1	1
33	Label - Torque (275 in-lb)	50D00032	1	x	1	x	1	x	1	x	1	x
		50D00033	x	1	x	1	x	1	x	1	x	1
34	Label - Conductors	50D00034	1	1	1	1	1	1	1	1	1	1
35	Nameplate, Data	616300-243	1	1	1	1	1	1	1	1	1	1
36	Label, Warning	616300-250	1	1	1	1	1	1	1	1	1	1
37	Label, VFD Order Code	616300-253	1	1	1	1	1	1	1	1	1	1
38	Label, Oil Pump	616300-251B	1	1	1	1	1	1	1	1	1	1
39	6 A Fuse	64676-75W	3	3	3	3	3	3	3	3	3	3
40	ISM	CSE0130037	1	1	1	1	1	1	1	1	1	1
41	Edging	GES144FA-C-08	1	1	1	1	1	1	1	1	1	1
42	Edging	GSE144FA-C	1	1	1	1	1	1	1	1	1	1
43	O-Ring	KK71EW016	2	2	2	2	2	2	2	2	2	2
44	Insulation	QR09-47-625-28	1	1	1	1	1	1	1	1	1	1
45	Insulation	QR09-47-625-40	1	1	1	1	1	1	1	1	1	1
46	Gland, Cable	T_B-2522	1	1	1	1	1	1	1	1	1	1
47	Label - Z-417	Z-417	1	1	1	1	1	1	1	1	1	1



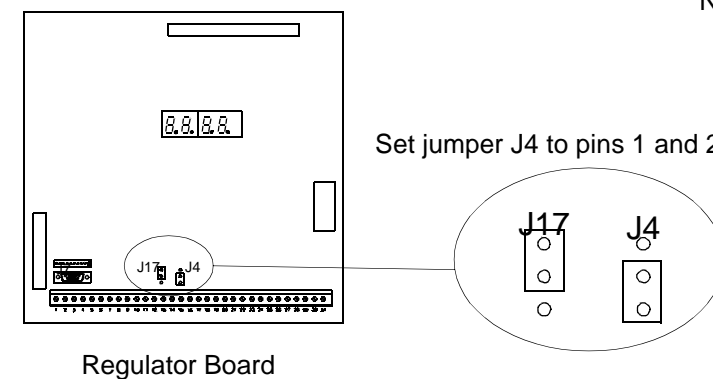
2.5 414 Amp 19XRV Drive Module Component Locations and Parts List



Item #	Description	Rockwell Automation Part #	Qty
1	Bus Bars (3) AC Output to motor	n/a	3
2	Bus Bars (3) AC Input from supply	n/a	3
3	IGBT Modules	n/a	6
4	Output Laminate	n/a	1
5	Capacitors	n/a	24
6	Remote Meter Interface (RMI) PCB	814.56.00	1
7	Casting	n/a	1
8	Membrane Switch Keypad/Bracket	410483-15B	1
9	Coolant Lines - (a) Inlet, (b) Outlet	n/a	2
10	Regulator PCB	179116	1
11	HP Power Module Control (PMC) PCB	179170	1
12	Current Feedback Devices (3)	25503-012-01	3
(not shown)	Gate Driver PCB	179168	1
(not shown)	LEM Harness	179215-8	1
(not shown)	Laminate Harness	179216-8	1
(not shown)	Chillplate Harness	179217-8	1
(not shown)	SCR Gate Harness	179218-8	1
(not shown)	Internal Fan	179196	1

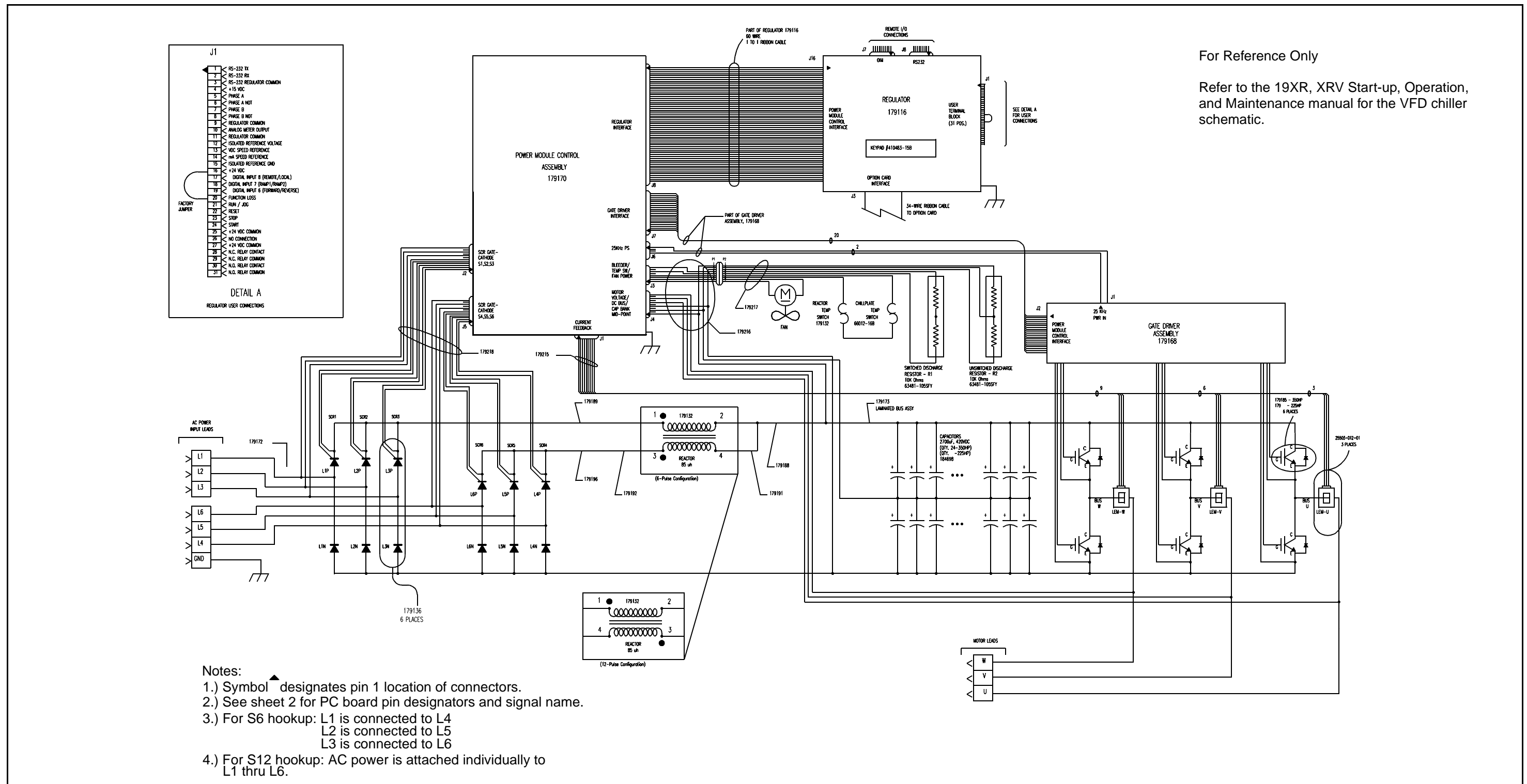
Contact Reliance Electric at 1-440-646-6650 for replacement parts.

Note: Use this phone number only for replacement parts listed on this page.



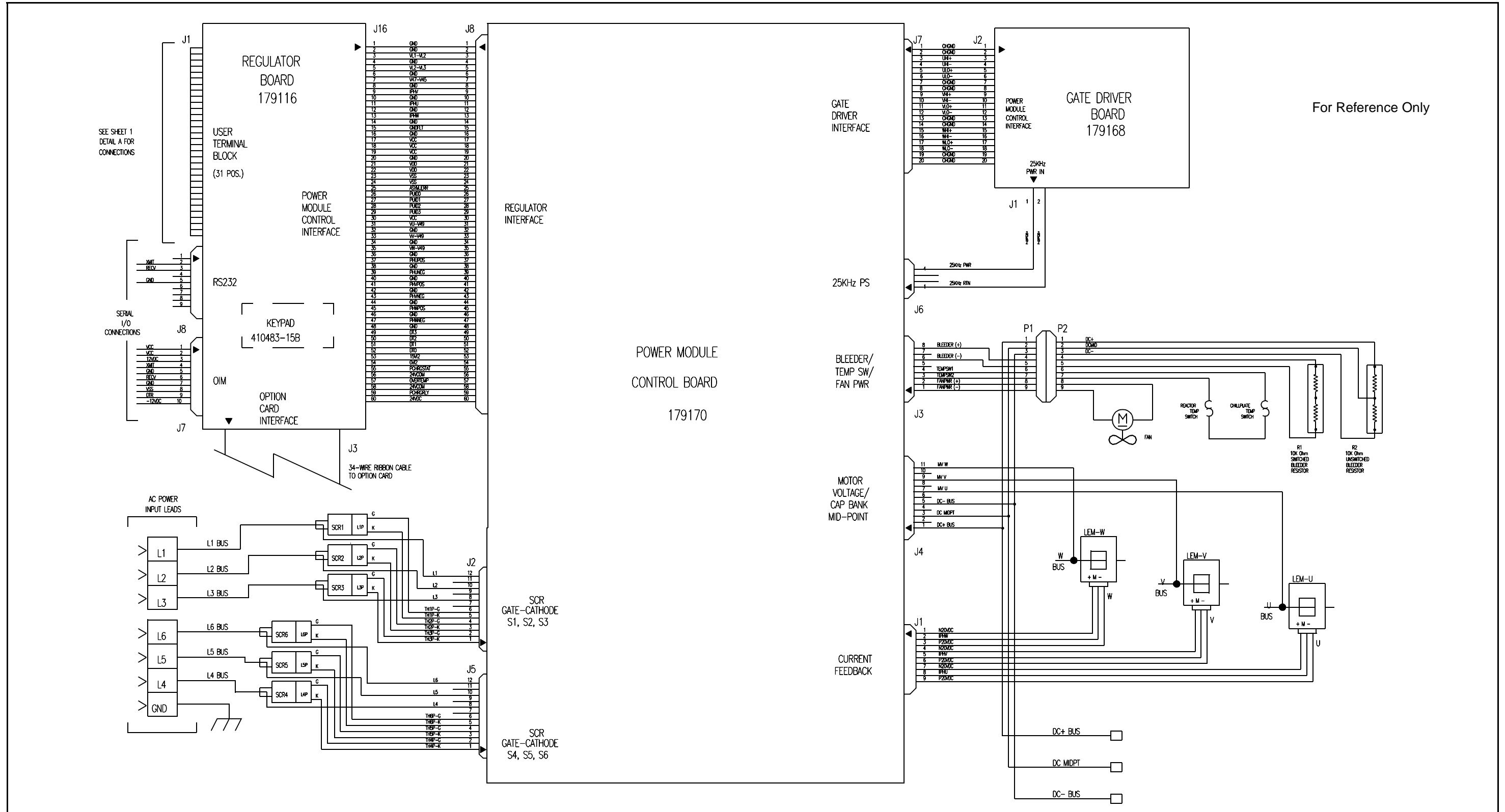
Note: When replacing the Regulator board, verify that jumper J4 is on pins 1 and 2, as shown in the detail below. You also may need to perform an initialization procedure. See section 6.7 or instruction manual D2-3411 for more information.

2.6 414 Amp 19XRV Drive Wiring Diagrams



For Reference Only

Refer to the 19XR, XRV Start-up, Operation, and Maintenance manual for the VFD chiller schematic.



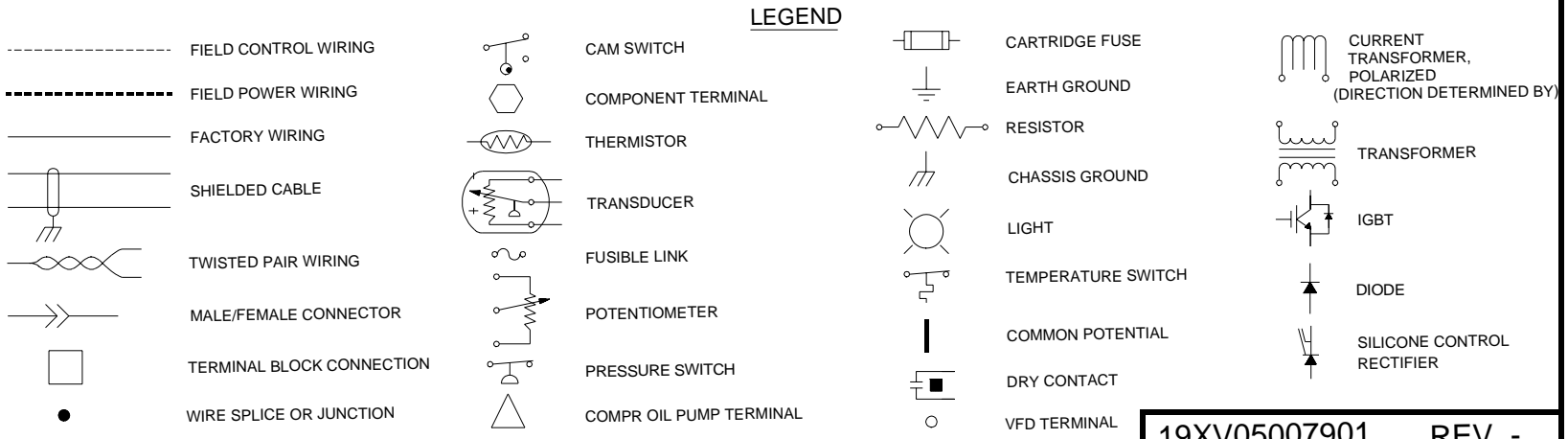


CHILLER CONTROL SCHEMATIC

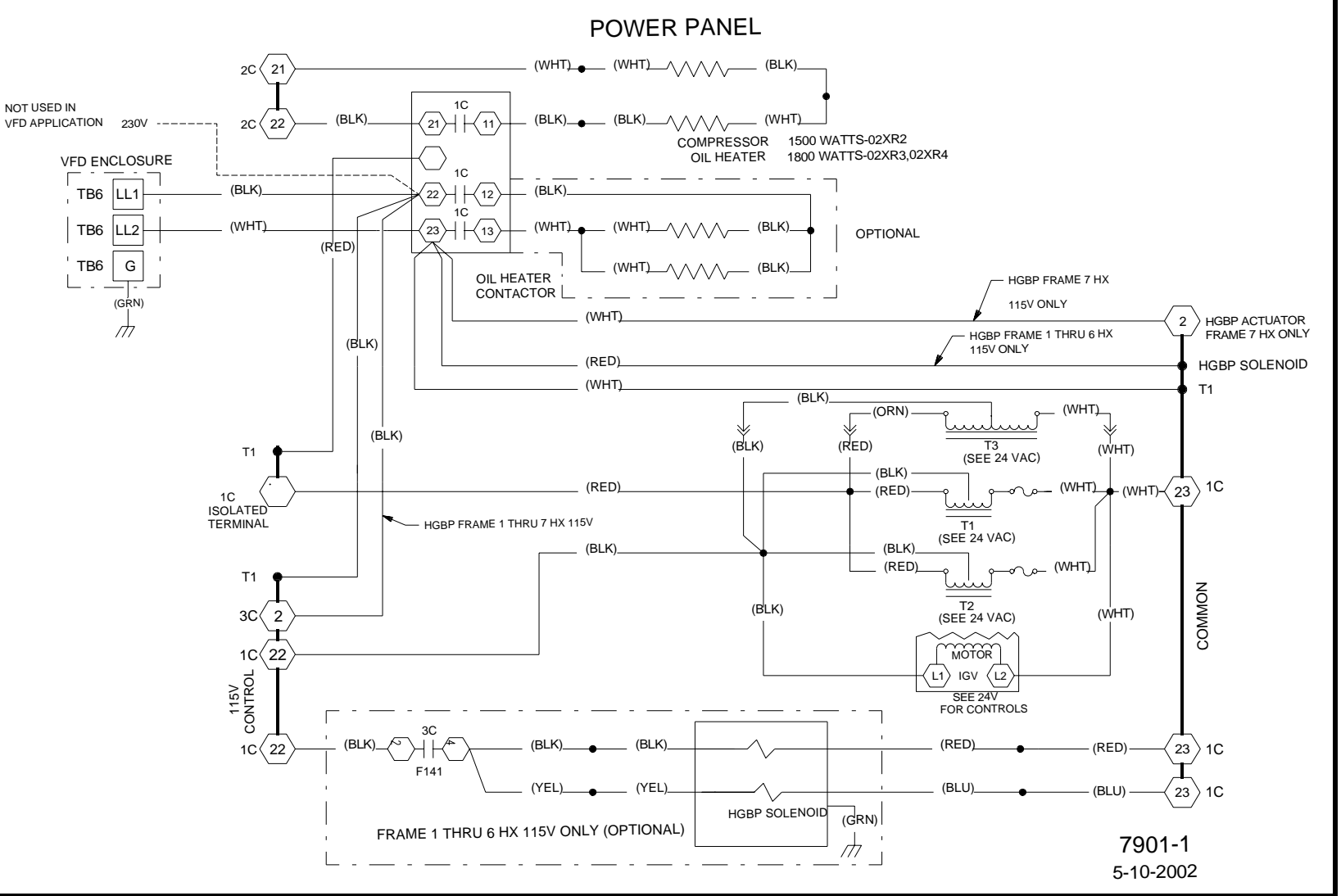
A United Technologies Company

ABBREVIATION LISTING		
AUX AUXILIARY	GV GUIDE VANE	MCB MODULE CONTROL BOARD
CAM SW CAM SWITCH	HGBP HOT GAS BYPASS	N.C. NORMALLY CLOSED
CB CIRCUIT BREAKER	HPR HIGH DISCHARGE PRESSURE RELAY	N.O. NORMALLY OPEN
CCM CHILLER CONTROL MODULE	HPS HIGH PRESSURE SWITCH	RC REGULATOR CONTROLLER
CCN CARRIER COMFORT NETWORK	HX HEAT EXCHANGER	RMI REMOTE METERING INTERFACE
COMM COMMUNICATIONS	ICVC INTERNATIONAL CHILLER VISUAL CONTROLLER	ST SHUNT TRIP
CT CURRENT TRANSFORMER	IGBT INSULATED GATE BIPOLAR TRANSISTOR	T TRANSFORMER
DL/DP DATALINK/DATAPORT	IGV INLET GUIDE VANE	TB TERMINAL BLOCK
FD FUSED DISCONNECT	ISM INTEGRATED STARTER MODULE	VFD VARIABLE FREQUENCY DRIVE
FR FAN RELAY	J JUNCTION	1C COMPRESSOR OIL HEATER CONTACTOR
FU FUSE	LEM CURRENT DETECTOR	1M START CONTACTOR
G CHASSIS GROUND	MAB MODULE ADAPTER BOARD	2C OIL PUMP CONTACTOR
		3C HOT GAS BYPASS RELAY

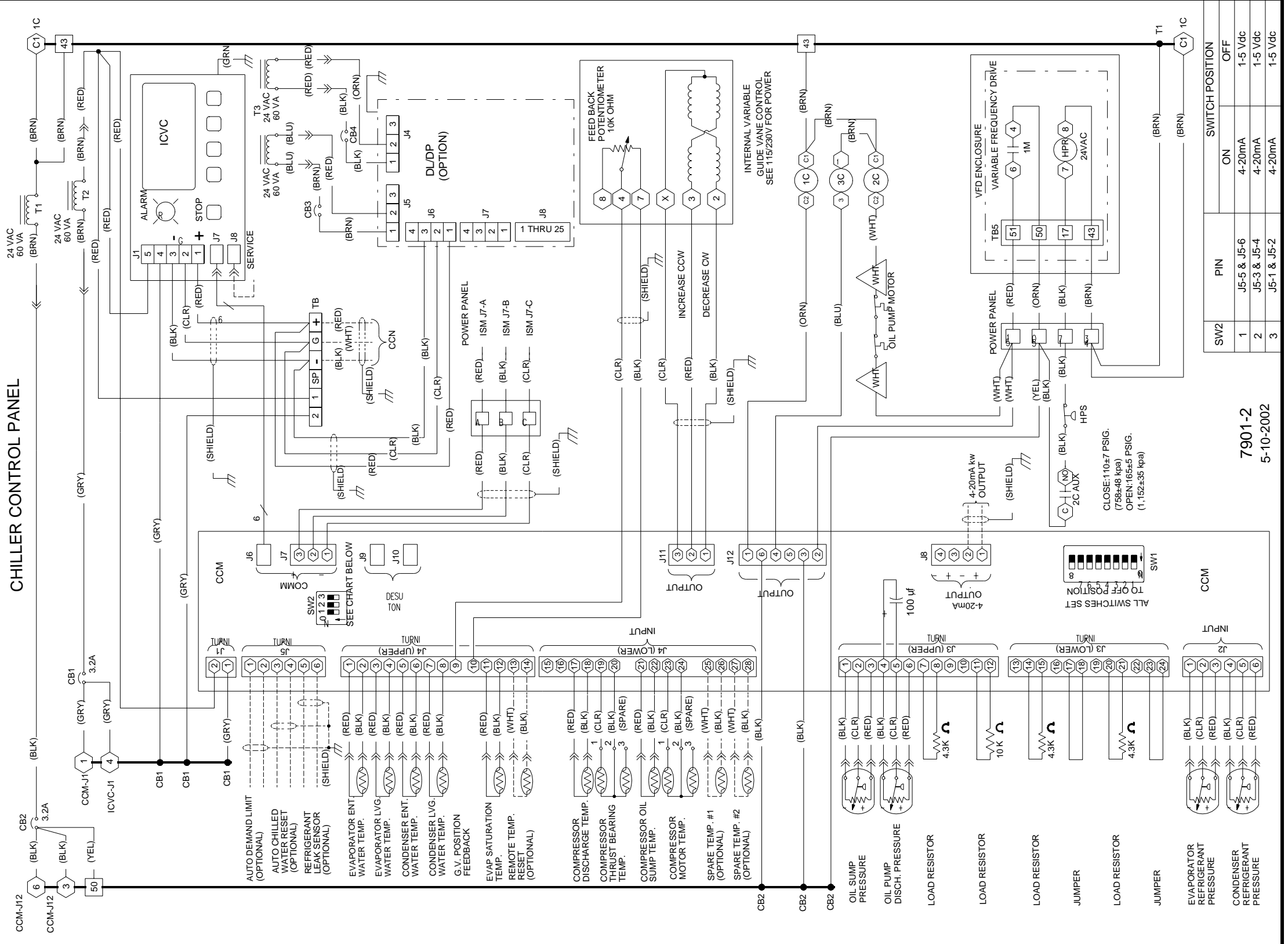
NOTES:
 1. LINE NUMBERS ON THE RIGHT & LEFT-HAND SIDE INDICATE LOCATION OF CONTACTS. NUMBERS CONNECTED WITH A LINE OVER THEM ARE CONTROLLED FROM THE SAME CONTACT COIL. AN UNDERLINED NUMBER SIGNIFIES A NORMALLY CLOSED CONTACT. A NUMBER WITHOUT AN UNDERLINE SIGNIFIES A NORMALLY OPEN CONTACT.
 2. 230V CONTROL WIRING REQUIRES FIELD REWIRING.
 3. VERTICAL BOLD LINES INDICATE COMMON POTENTIAL, NOT ACTUAL WIRES.



19XV05007901 REV. -



CHILLER CONTROL PANEL



SW2	PIN	SWITCH POSITION
1	J5-5 & J5-6	ON OFF
2	J5-3 & J5-4	4-20mA 1-5 Vdc
3	J5-1 & J5-2	4-20mA 1-5 Vdc

7901-2
5-10-2002

4-20mA kw
OUTPUT
(SHIELD)

ALL SWITCHES SET
TO OFF POSITION

CCM INPUT

CCM INPUT

CCM INPUT

CCM INPUT

CCM INPUT

CCM INPUT

CCM INPUT

CCM INPUT

CCM INPUT

CCM INPUT

CCM INPUT

CCM INPUT

CCM INPUT

CCM INPUT

CCM INPUT

CCM INPUT

CCM INPUT

CCM INPUT

CCM INPUT

CCM INPUT

CCM INPUT

CCM INPUT

CCM INPUT

CCM INPUT

CCM INPUT

CCM INPUT

CCM INPUT

CCM INPUT

CCM INPUT

CCM INPUT

CCM INPUT

CCM INPUT

CCM INPUT

CCM INPUT

CCM INPUT

CCM INPUT

CCM INPUT

CCM INPUT

CCM INPUT

CCM INPUT

CCM INPUT

CCM INPUT

CCM INPUT

CCM INPUT

CCM INPUT

CCM INPUT

CCM INPUT

CCM INPUT

CCM INPUT

CCM INPUT

CCM INPUT

CCM INPUT

CCM INPUT

CCM INPUT

CCM INPUT

CCM INPUT

CCM INPUT

CCM INPUT

CCM INPUT

CCM INPUT

CCM INPUT

CCM INPUT

CCM INPUT

CCM INPUT

CCM INPUT

CCM INPUT

CCM INPUT

CCM INPUT

CCM INPUT

CCM INPUT

CCM INPUT

CCM INPUT

CCM INPUT

CCM INPUT

CCM INPUT

CCM INPUT

CCM INPUT

CCM INPUT

CCM INPUT

CCM INPUT

CCM INPUT

CCM INPUT

CCM INPUT

CCM INPUT

CCM INPUT

CCM INPUT

CCM INPUT

CCM INPUT

CCM INPUT

CCM INPUT

CCM INPUT

CCM INPUT

CCM INPUT

CCM INPUT

CCM INPUT

CCM INPUT

CCM INPUT

CCM INPUT

CCM INPUT

CCM INPUT

CCM INPUT

CCM INPUT

CCM INPUT

CCM INPUT

CCM INPUT

CCM INPUT

CCM INPUT

CCM INPUT

CCM INPUT

CCM INPUT

CCM INPUT

CCM INPUT

CCM INPUT

CCM INPUT

CCM INPUT

CCM INPUT

CCM INPUT

CCM INPUT

CCM INPUT

CCM INPUT

CCM INPUT

CCM INPUT

CCM INPUT

CCM INPUT

CCM INPUT

CCM INPUT

CCM INPUT

CCM INPUT

CCM INPUT

CCM INPUT

CCM INPUT

CCM INPUT

CCM INPUT

CCM INPUT

CCM INPUT

CCM INPUT

CCM INPUT

CCM INPUT

CCM INPUT

CCM INPUT

CCM INPUT

CCM INPUT

CCM INPUT

CCM INPUT

CCM INPUT

CCM INPUT

CCM INPUT

CCM INPUT

CCM INPUT

CCM INPUT

CCM INPUT

CCM INPUT

CCM INPUT

CCM INPUT

CCM INPUT

CCM INPUT

CCM INPUT

CCM INPUT

CCM INPUT

CCM INPUT

CCM INPUT

CCM INPUT

CCM INPUT

CCM INPUT

CCM INPUT

CCM INPUT

CCM INPUT

CCM INPUT

CCM INPUT

CCM INPUT

CCM INPUT

CCM INPUT

CCM INPUT

CCM INPUT

CCM INPUT

CCM INPUT

CCM INPUT

CCM INPUT

CCM INPUT

CCM INPUT

CCM INPUT

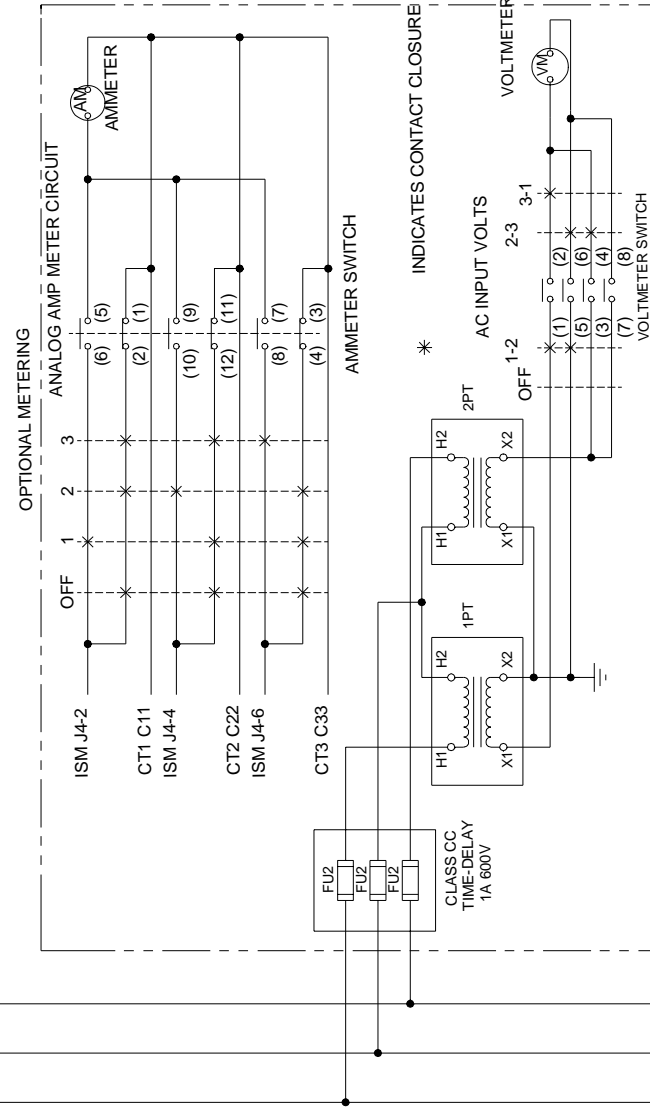
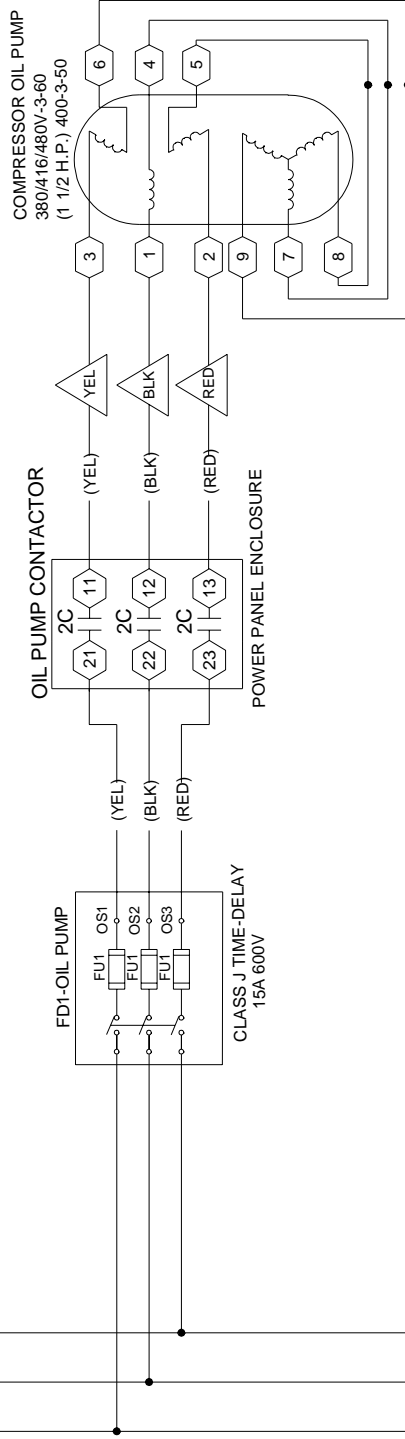
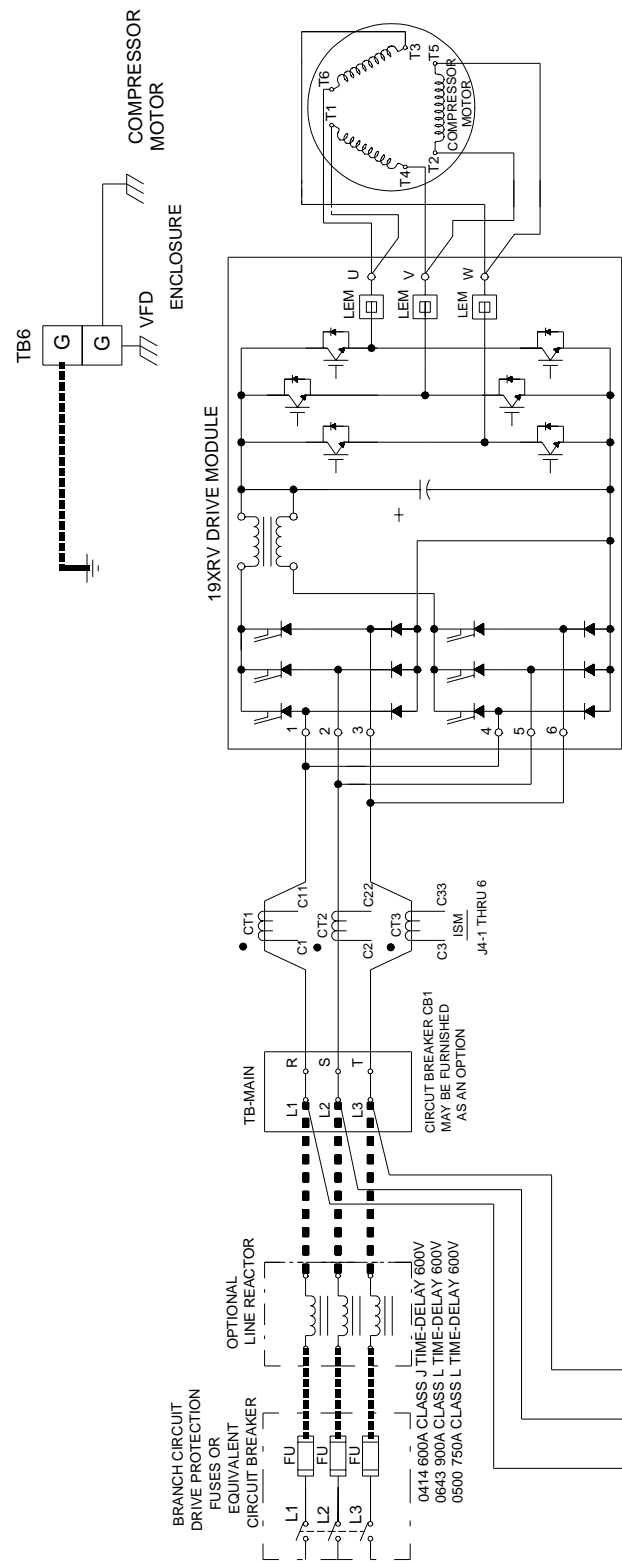
CCM INPUT

CCM INPUT

CCM INPUT

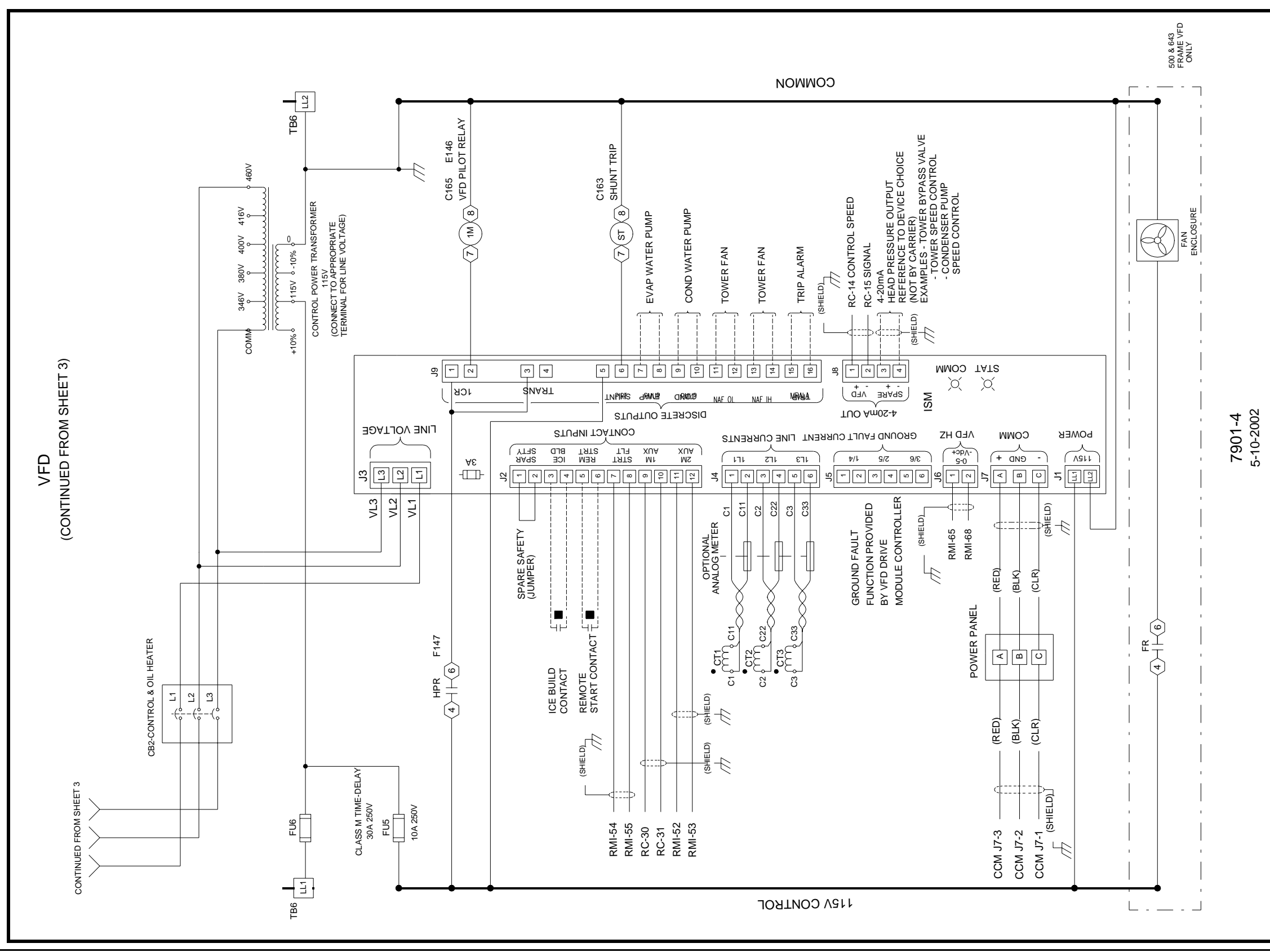
CCM INPUT

VFD

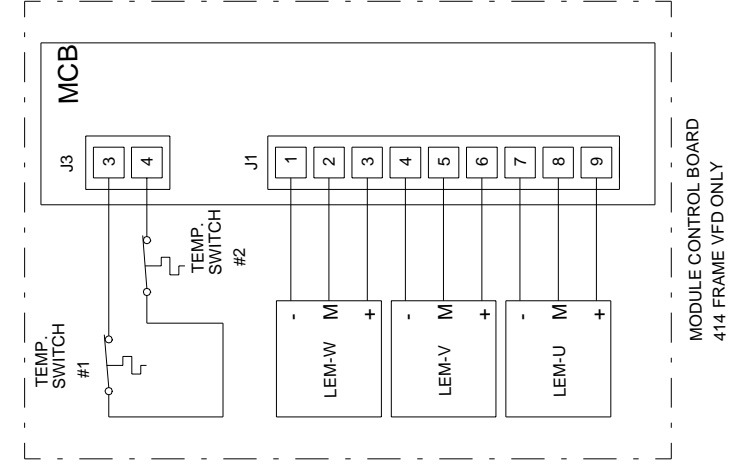
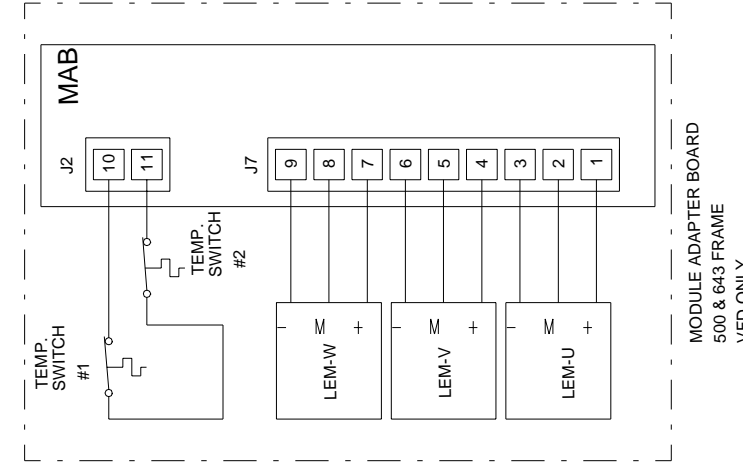
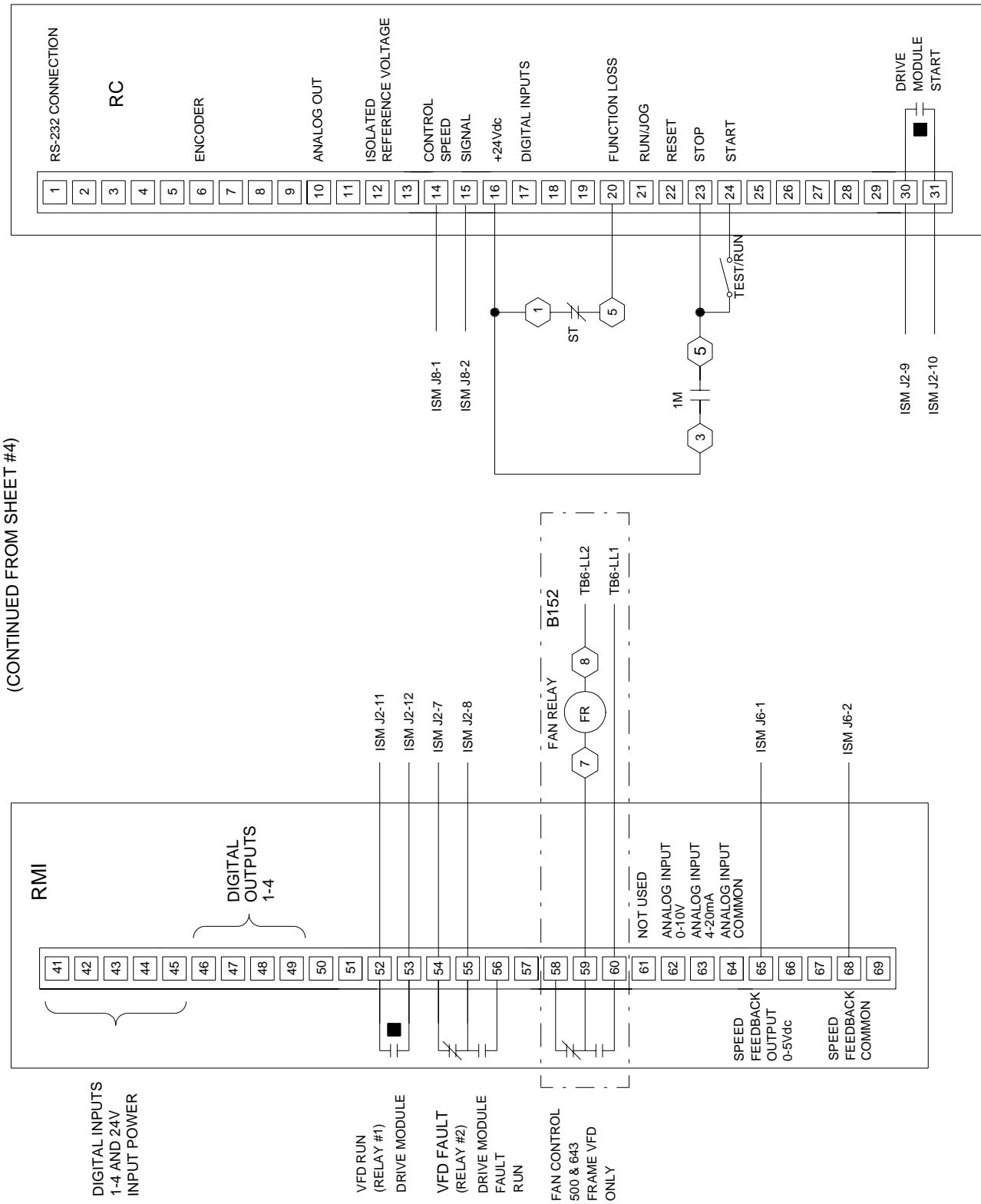


CONTINUED ON SHEET 4

7901-3
5-10-2002



VFD
(CONTINUED FROM SHEET #4)



7901-5
5-10-2002

2.8 500 Amp and 643 Amp 19XRV Drive Wiring Diagrams

