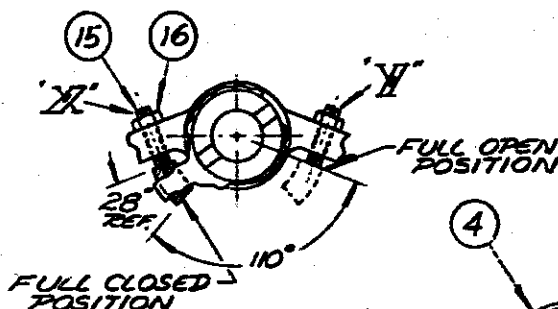
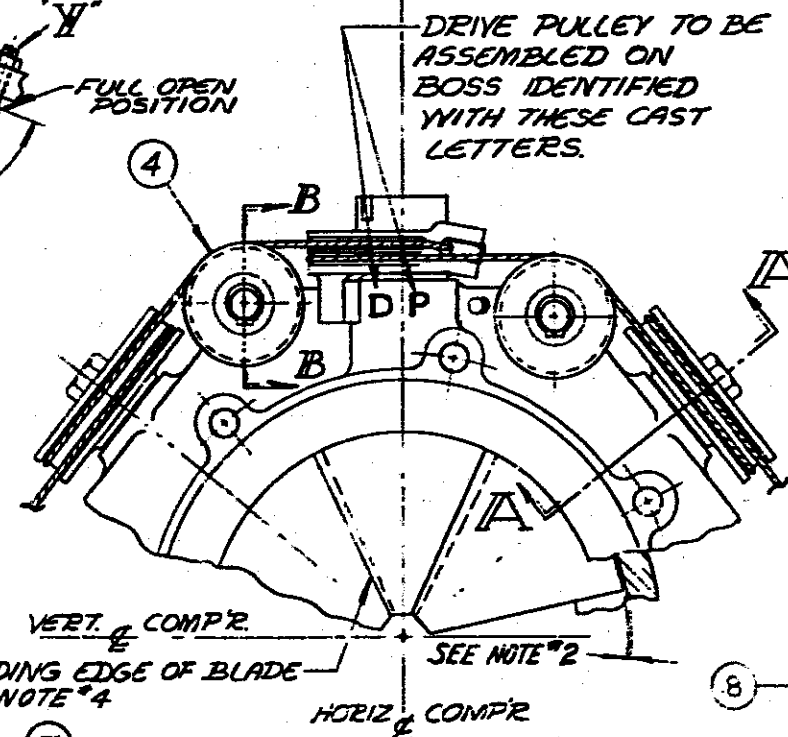


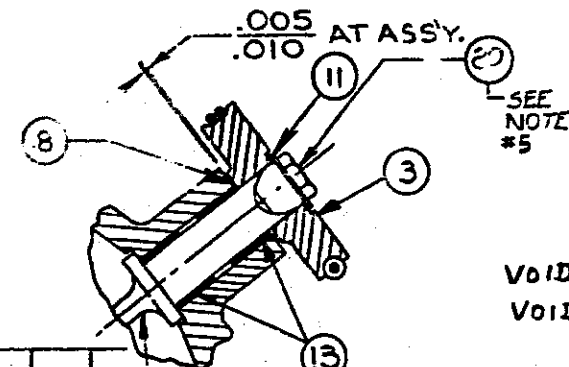
SET THE DRIVE PULLEY AT THIS ANGLE WITH ALL BLADES CLOSED EVENLY AND TOUCHING EACH OTHER. SET SCREW 'X' TO TOUCH STOP ON DRIVE PULLEY AND TIGHTEN NUT (ITEM 16). THEN ROTATE DRIVE PULLEY 10° AND SET SCREW 'Y' AND NUT THE SAME WAY.



DETAIL 'C'



SECTION B-B



SECTION A-A

ITEM	PART No	REQD	DESCRIPTION
1	SEE CHART	1	BLADE RING
2	19EA51-1009	1	DRIVE PULLEY
3	19EA51-2142	6	PULLEY
4	19C47-8131	7	IDLER PULLEY
5	19EA52-418	7	PRE-WHIRL BLADE ASS'Y.
6	19EA51-102	1	CABLE ASS'Y
7	19EA51-2022	7	PIN
8	AT40AA202	2	JAM NUT 5/16-24
9	AT39AA202	2	NUT 5/16-24
10	AU01AA201	2	WASHER 5/16
11	19EA41-2592	7	WASHER
12	AX01AA027	2	COTTER PIN 3/32 DIA. 1/4 LG.
13	KT53XL102	14	BUSHING
14	KT53XL065	7	BUSHING
15	AE13AR170	2	HEX SOCK. SET SCREW 1/4-20-1/2 LG.
16	AT39AA171	2	NUT, 1/4-20
17	AU45AR062	7	RING, RETAINING
18	19EA51-2012	7	WASHER, THRUST
19	AU02AA332	7	WASHER, THRUST
20	AA18BP295	7	1/2 13 X 2 LG HEX HD BOLT

- NOTES:
- TIGHTEN CABLE TO 500# TENSION.
  - BLADE ROOT CLEARANCE WITH BLADES SEATED 1/4 IN CLOSED POSITION .005-.035
  - SEE ENG. REQY. B-190 FOR FURTHER INFORMATION ON GUIDE VANE ASS'Y & TEST PROCEDURE.
  - LEADING EDGE IS THICKER THAN TRAILING EDGE.
  - TORQUE BOLT TO 80 FT.-LB. MAX, IF BOLT (ITEM #20) MUST BE REMOVED FOR ANY REASON DURING ASSEMBLY, DISCARD & USE NEW BOLT.

ASSY No	ITEM #1	REQD	USED ON	WT
P. 19EA53-467	19EA53-1004	1	19EA53-198 17FA502-404	1.2
P. 19EA55-	19EA55-	1	19EA55-131 17FA512-404	1.2
P. 19EA57-	19EA57-	1	19EA57-198 17FA522-404	1.2
P. 19EA59-	19EA59-	1	19EA59-198 17FA532-404	1.2
VOID - P. 17FA582-438	17FA582-3204	1	17FA582-428	
VOID - P. 17FA592-438	17FA592-3204	1	17FA592-428	
P. 17FA582-113			17FA582-404	
P. 17FA592-113			17FA592-404	

E	VO. SEE 17FA582438 E 17FA592438 ADDED P. 17FA582113 E P. 17FA592113	9-13-95	FM	V6F	FAM	195-130D
D	ADDED P. 17FA582438 E P. 17FA592438	2-25-94	UJS	JWS	EG	194-016D
C	ADDED ITEM #20 REV. 11-2-75 SEE P. 17A	11-2-76	ET	RL	TE	176-3683
B	ADDED NOTE #5	11/1/76	TR	WRQ	EGG	196-3683
A	REVISED NOTE #3	5-14-75	JR	ML	LP	195-3683

MATERIAL		CARRIER CORPORATION	
APPLIED FINISH		This Drawing is the Personal Property of Carrier Corporation. All Use is Forbidden Except On Its Written Consent.	
SYRACUSE, NEW YORK, U.S.A.		SYRACUSE, NEW YORK, U.S.A.	
TOLERANCES UNLESS OTHERWISE SPECIFIED:		TITLE	
FRACTIONS	DECIMALS	BLADE RING ASS'Y	
ANGLES	HOLE SPACING	DWG. NO. 19EA53-467	
HOLE LOCATION	SCALE	REV. F	
NON-CUMULATIVE	1:2	REV. F	

F	TOLERANCE IN NOTE #2 WAS .010-.030	6-1-1998	RAP	TC	SN	MB-085D
REV	REVISION RECORD	DATE	BY	CHK.	APRO	REV.

REV. F  
DWG. NO. 19EA53-467