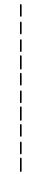


101 102 103 104 105 106 107 108 109 110 111 112 113 114 115 116 117 118 119 120 121 122 123 124 125 126 127 128 129 130 131 132 133 134 135 136 137 138 139 140 141 142 143 144 145 146 147 148 149 150 151 152 153 154 155 156 157 158 159 160 161 162 163 164 165 166 167 168 169 170 171 172 173 174 175 176 177 178 179 180 181 182 183 184

**LEGEND**

FIELD POWER WIRING



FACTORY WIRING



SHIELDED CABLE



TWISTED PAIR WIRING



MALE/FEMALE CONNECTOR



TERMINAL BLOCK CONNECTION



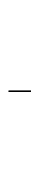
WIRE SPLICE



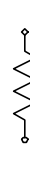
FIELD SPLICE



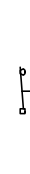
GROUND



RESISTOR



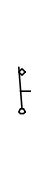
PRESSURE SWITCH



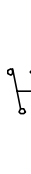
LIGHT



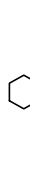
TEMPERATURE SWITCH



CAM SWITCH



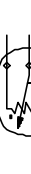
MARKED TERMINAL



THERMISTOR



TRANSDUCER



FUSIBLE LINK



POTENTIOMETER



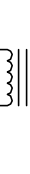
POLARIZED CURRENT TRANSFORMER  
(DIRECTION DETERMINED BY ● )



CURRENT TRANSFORMER



TRANSFORMER



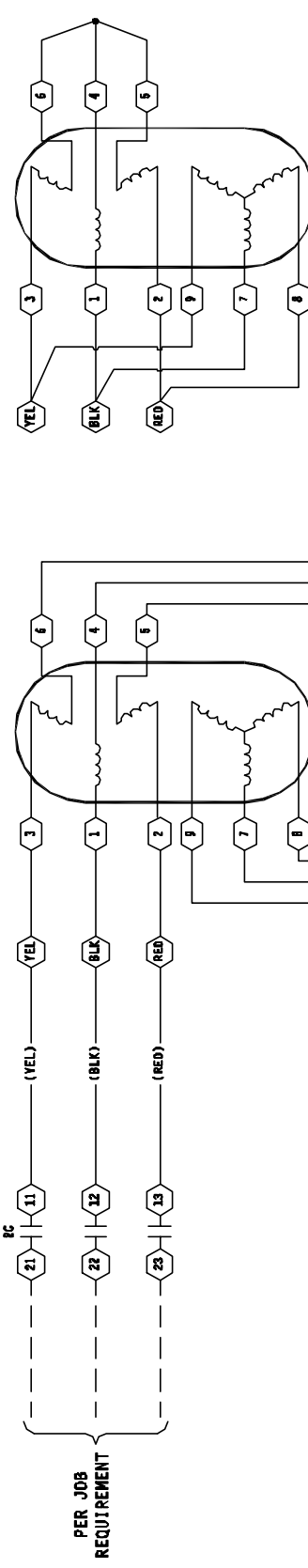
**ABBREVIATION LISTING**

AUX	AUXILIARY
CAM SW	CAM SWITCH
CB	CIRCUIT BREAKER
CCH	COMPRESSOR CONTROL MODULE
CCN	CARRIER COMFORT NETWORK COMMUNICATIONS
CT	CURRENT TRANSFORMER
CYC	CHILLER VISUAL CONTROL
FU	FUSE
GFTC	GROUND FAULT CURRENT TRANSFORMER
GND	GROUND
HGBP	HOT GAS BYPASS
HPS	HIGH PRESSURE SWITCH
HPR	HIGH DISCHARGE PRESSURE RELAY
HX	HEAT EXCHANGER
IGV	INLET GUIDE VANE
ISM	INTEGRATED STARTER MODULE
J	JUNCTION
MTR	STARTER COOLING FAN
N.C.	NORMALLY CLOSED
N.O.	NORMALLY OPEN
PFC	POWER FACTOR CORRECTION CAPACITOR
PFCI	POWER FACTOR CORRECTION INDUCTOR
R	RESISTOR
RES	RESISTOR
S	WYE CONNECT CONTACTOR
SCR	SILICON CONTROLLED RECTIFIER
SOL	SOLENOID
SRDA	SPLIT RING DIFFUSER ACTUATOR
ST	SHUNT TRIP CONTACTOR
T	TRANSFORMER
TB	TERMINAL BLOCK
TC	TRANSITION CONTACTOR
1M	START CONTACTOR
2M	RUN CONTACTOR
3M	3 PHASE POWER TRANSFORMER
1C	COMPRESSOR OIL HEATER CONTACTOR
2C	OIL PUMP CONTACTOR
3C	HOT GAS BYPASS CONTACTOR

- NOTES:**
1. LINE NUMBERS ON THE RIGHT SIDE INDICATE LOCATION OF CONTACTS. NUMBERS CONNECTED WITH A LINE OVER THEM ARE CONTROLLED FROM THE SAME CONTACT COIL. AN UNDERLINED NUMBER SIGNIFIES A NORMALLY CLOSED CONTACT. A NUMBER WITHOUT AN UNDERLINE SIGNIFIES A NORMALLY OPEN CONTACT.
  2. 230V CONTROL WIRING REQUIRES FIELD REMIRING.
  3. VERTICAL BOLD LINES INDICATE COMMON POTENTIAL, NOT ACTUAL WIRES.

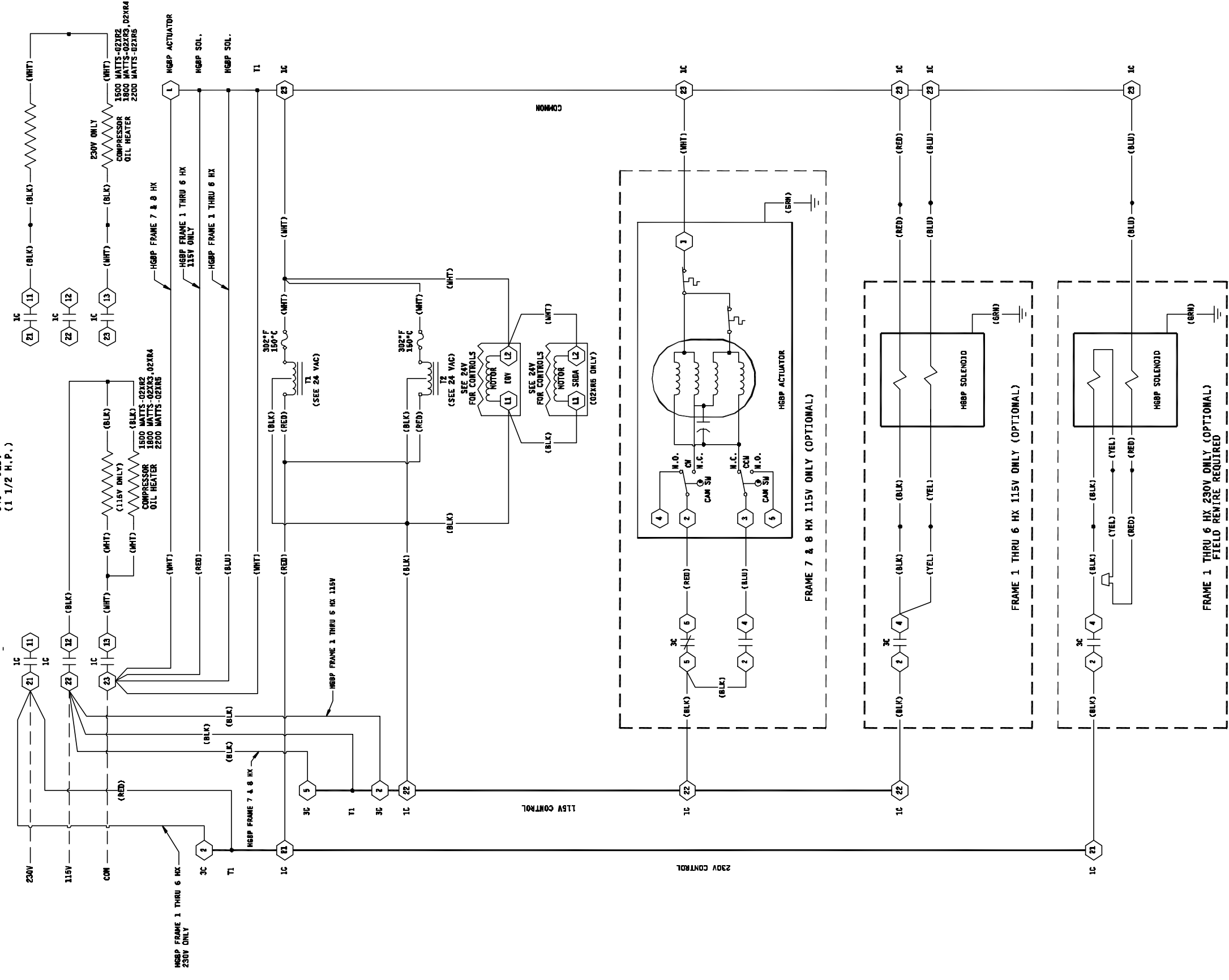
		THIS DRAWING IS THE PERSONAL PROPERTY OF CARRIER CORPORATION SYRACUSE, NEW YORK, U.S.A. ALL USE IS FORBIDDEN EXCEPT ON ITS WRITTEN CONSENT SUBSTITUTION OF EQUIVALENTS REQUIRES CARRIER'S APPROVAL. THIS DRAWING DOES NOT CONSTITUTE A WARRANTY OR ACCEPTANCE OF ANY CONTRACT.		TITLE <b>19XR CHILLER CONTROL WIRING PIC II</b>	
CERTIFIED CORRECT BY CARRIER AIR CONDITIONING CO. SIGNED: _____ DATE: _____ CHECKED: _____ DATE: _____ JOB SITE: _____		JOB NUMBER <b>19XR</b>		SHEET NO. OF SHEETS <b>E1 1 OF 1</b>	
REVISION DO NOT SCALE THIS DRAWING		DATE SCALE: NONE		BUYER'S P.O. NO.:	
DPTN: JHG 1-18-99		CHKD:		SCALE: NONE	

A B C D E F

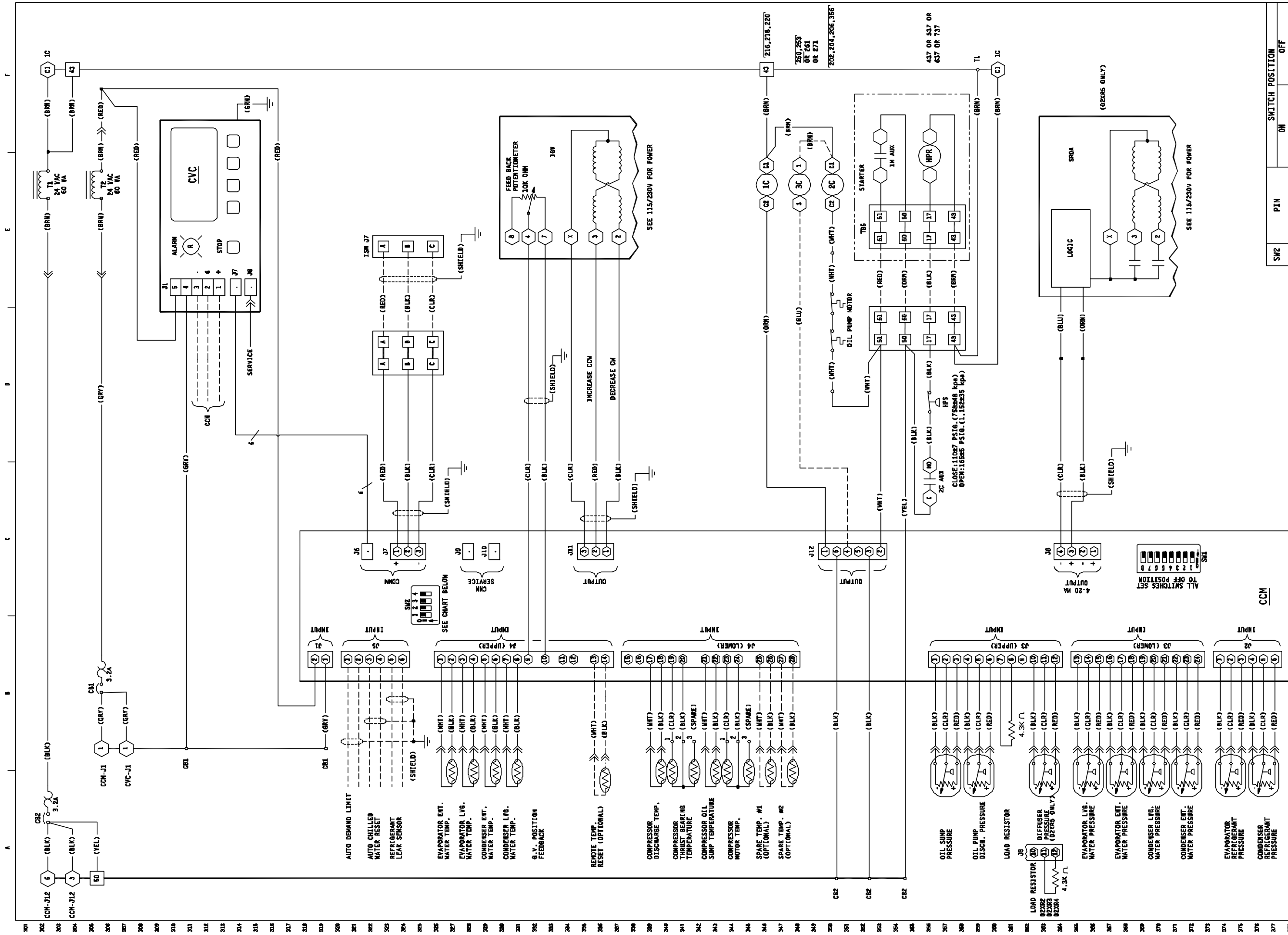


COMPRESSOR OIL PUMP  
200 - 240V  
(1 1/2 H.P.)

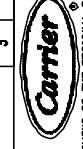
COMPRESSOR OIL PUMP  
346 - 619V  
(1 1/2 H.P.)



		<b>19XR CHILLER CONTROL WIRING PIC II</b>	
<small>THIS DRAWING IS THE PERSONAL PROPERTY OF CARRIER CORPORATION SYRACUSE, NEW YORK, U.S.A. ALL USE IS FORBIDDEN EXCEPT ON ITS WRITTEN CONSENT. SUBSTITUTION OF THESE PARTS WITHOUT THE APPROVAL OF CARRIER CORPORATION DOES NOT CONSTITUTE ACCEPTANCE OF ANY CONTRACT.</small>		SIZE <b>D</b>	SHEET NO. <b>E1</b>
CERTIFIED CORRECT BY CARRIER AIR CONDITIONING CO.		JOB NUMBER <b>19XR</b>	SHEET <b>2</b> OF <b>2</b>
SIGNED USER	DATE	JOB SITE	REF.
REVISION	DATE	DATE	DATE
DO NOT SCALE THIS DRAWING		BUYER'S P.O. NO.:	SCALE: NONE
DFTL: JHG	1-18-99	CHKD.:	SCALE: NONE



SW2	PIN	SWITCH POSITION
1	J5-1 & J5-2	ON
2	J5-3 & J5-4	OFF
3	J5-5 & J5-6	0-5 VDC
		4-20 mA
		0-5 VDC
		4-20 mA



THIS DRAWING IS THE PERSONAL PROPERTY OF  
**CARRIER CORPORATION**  
 SYRACUSE, NEW YORK, U.S.A.  
 ALL USE IS FORBIDDEN EXCEPT ON ITS WRITTEN CONSENT.  
 SUBSTITUTION OF THESE PARTS WITHOUT THE APPROVAL OF CARRIER  
 DOES NOT CONSTITUTE ACCEPTANCE OF ANY CONTRACT.

CERTIFIED CORRECT BY  
**CARRIER AIR CONDITIONING CO.**  
 SIGNED: \_\_\_\_\_ DATE: \_\_\_\_\_  
 USER: \_\_\_\_\_ JOB SITE: \_\_\_\_\_  
 BUYER: \_\_\_\_\_ P.O. NO.: \_\_\_\_\_

NO.	REVISION	DATE	BY	DATE

DO NOT SCALE THIS DRAWING

INSTR. JHG 1-18-99 CHND. SCALE: NONE

TITLE  
**19XR CHILLER  
 CONTROL WIRING  
 PIC II**

SIZE  
**D**

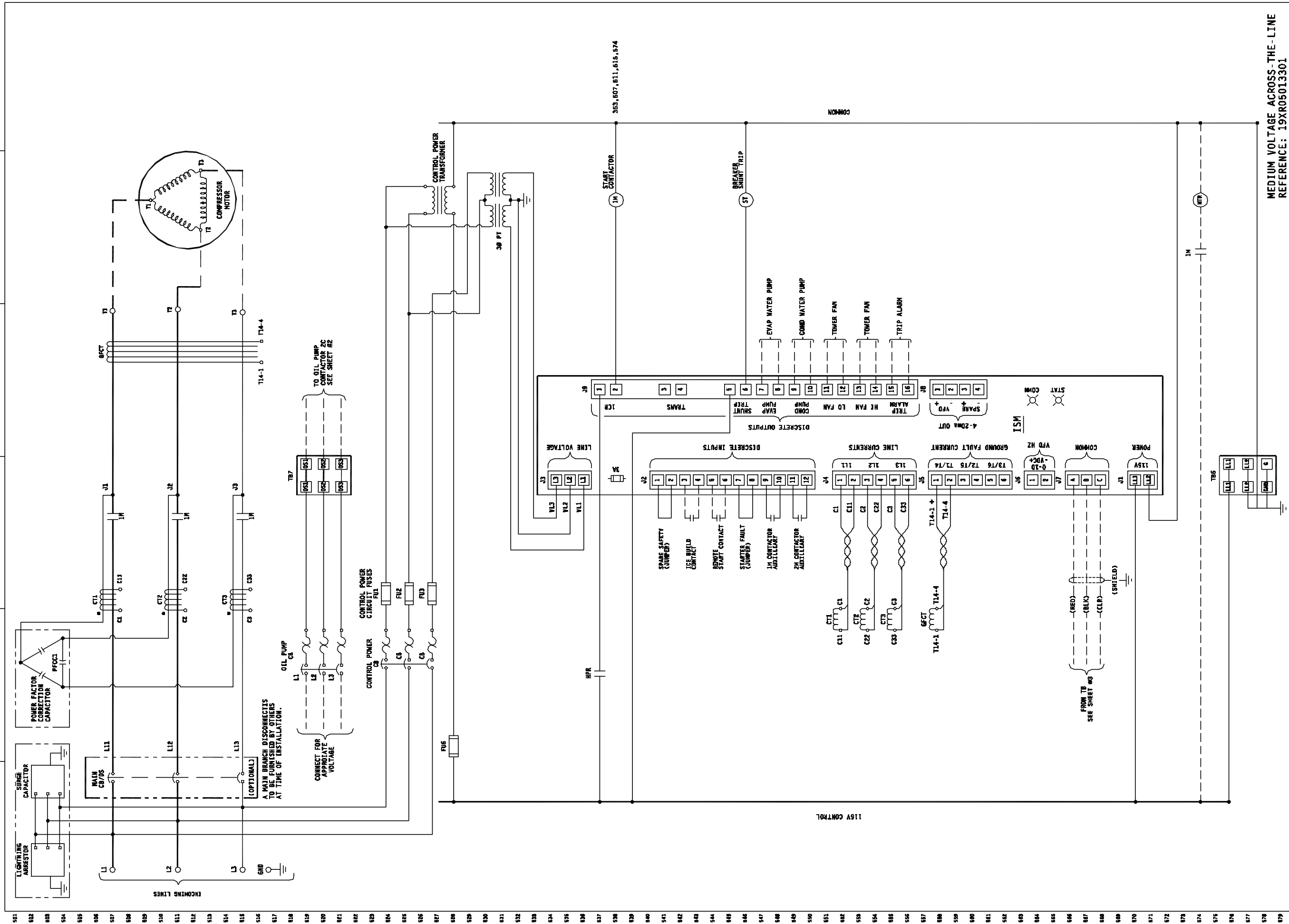
JOB NUMBER  
**19XR**

SHEET  
**E1**

OF  
**3**



501 502 503 504 505 506 507 508 509 510 511 512 513 514 515 516 517 518 519 520 521 522 523 524 525 526 527 528 529 530 531 532 533 534 535 536 537 538 539 540 541 542 543 544 545 546 547 548 549 550 551 552 553 554 555 556 557 558 559 560 561 562 563 564 565 566 567 568 569 570 571 572 573 574 575 576 577 578 579 580 581 582 583 584



MEDIUM VOLTAGE ACROSS-THE-LINE  
REFERENCE: 19XR05013301

		<b>19XR CHILLER STARTER WIRING PIC II</b>	
<small>THIS DRAWING IS THE PERSONAL PROPERTY OF CARRIER CORPORATION SYRACUSE, NEW YORK, U.S.A. ALL USE IS FORBIDDEN EXCEPT ON ITS WRITTEN CONSENT. SUSCEPTIBLE TO CHANGE WITHOUT NOTICE. PERFORMANCE DOES NOT CONSTITUTE ACCEPTANCE OF ANY CONTRACT.</small>		SIZE <b>D</b>	SHEET NO. <b>E1</b>
CERTIFIED CORRECT BY CARRIER A/C CONDITIONING CO.		DATE	REV.
SIGNED USER	DATE	DATE	DATE
DO NOT SCALE THIS DRAWING		SCALE: NONE	BUYER'S P.O. NO.:
DWTN. JHG	CHKD.	DATE	SHEET <b>5</b> OF <b>5</b>



