



SERVICE BULLETIN

Title: Vessel Separation Feet
Models Affected: 19XL & 17/19EX Machines

Number: C9616
Date: 6/5/96
Supersedes:
Date:

Purpose:

To advise on proper procedures for separating and re-aligning Vessels without Separation Feet.

File: Cooler-Condenser-Economizer

Prepared By: Jason Gough

Approved By: Alan M. Johnson

This document and the material contained herein are the property of Carrier Corporation and may not be copied, reproduced, or released without written permission of Carrier Corporation.

Background:

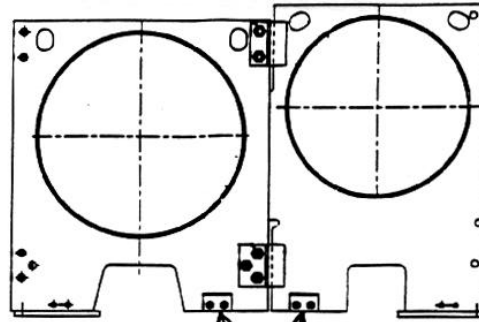
19XL machines formerly had Vessel Separation Feet on the Cooler and Condenser, which were lowered when it was necessary to separate and re-assemble the Vessels. In present 19XL and 17/19EX machines, the feet have been removed.

Information:

Blocking must be installed under any Vessel with short feet (no Support Plate on one side) whenever the Vessels are separated or re-assembled. This will take pressure off the connecting bolts when separating the Vessels, and also provide proper alignment when re-assembling the Vessels. On all 19XL machines, blocking is necessary under the short feet of both the Cooler and Condenser. On 17/19EX machines with 12' Vessels, blocking is necessary under the short feet of both the Cooler and Economizer/Storage Vessel. On 17/19EX machines with 17' Vessels, blocking is necessary only under the Economizer/Storage Vessel. Due to the weight of the machines, wood or similar materials are not recommended as blocking devices. Steel plates approximately 3/4" thick are recommended instead. These plates should have at least the same Length and Width dimensions as the Support Plates installed on the machine at the factory. The blocking may be removed after the vessels are re-assembled.

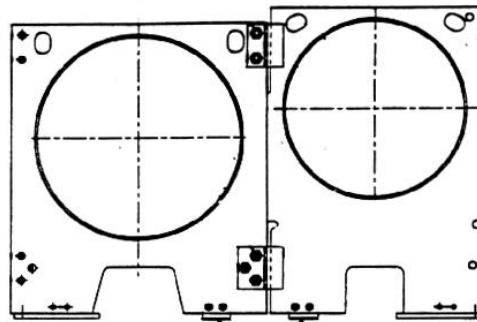
Example of Blocking for 19XL

Vessels with Separation Feet in Raised Position



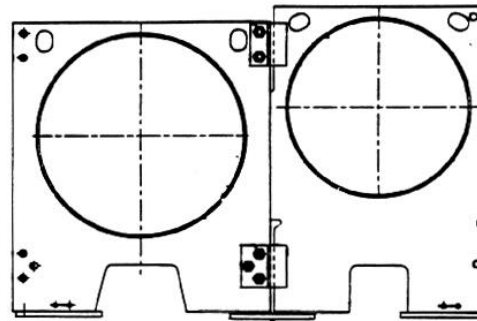
Vessel Separation Feet

Vessels with Separation Feet in Lowered Position



Vessel Separation Feet

Vessels without Separation Feet



Recommended Blocking