



SERVICE BULLETIN

Title: Updated 19XL Refrigerant Charges
Models Affected: 19XL

Number: C9312
Date: 6/18/93
Supersedes: C9212
Date: 5/11/92

Situation:

The numbers below represent the total machine refrigerant charges for the 19XL centrifugal. Note that they are determined by the COOLER code, regardless of what CONDENSER size may be used. The refrigerant charge of Linear float designs was reduced on chillers shipped after 6/15/93.

File: Installation, Start-up, Operation

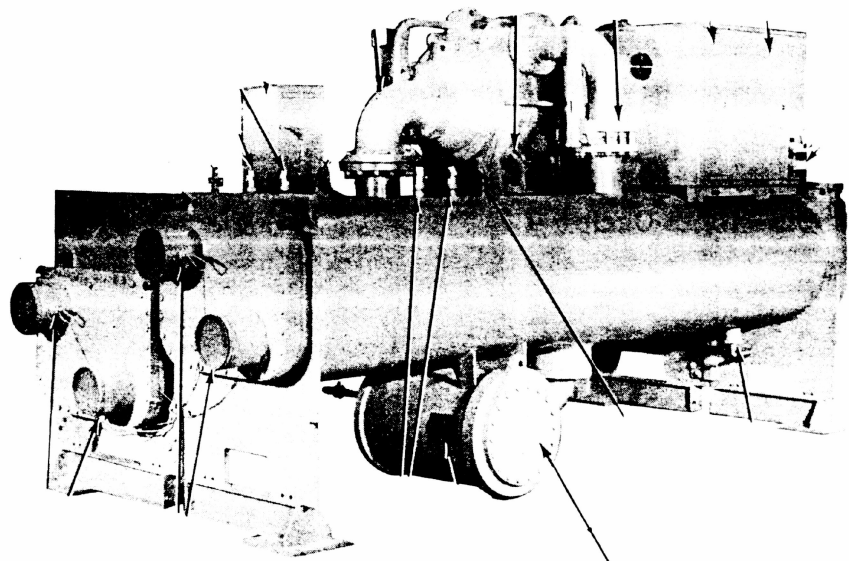
Prepared By: Don Berdan

Approved By: Alan Johnson

This document and the material contained herein are the property of Carrier Corporation and may not be copied, reproduced, or released without written permission of Carrier Corporation.

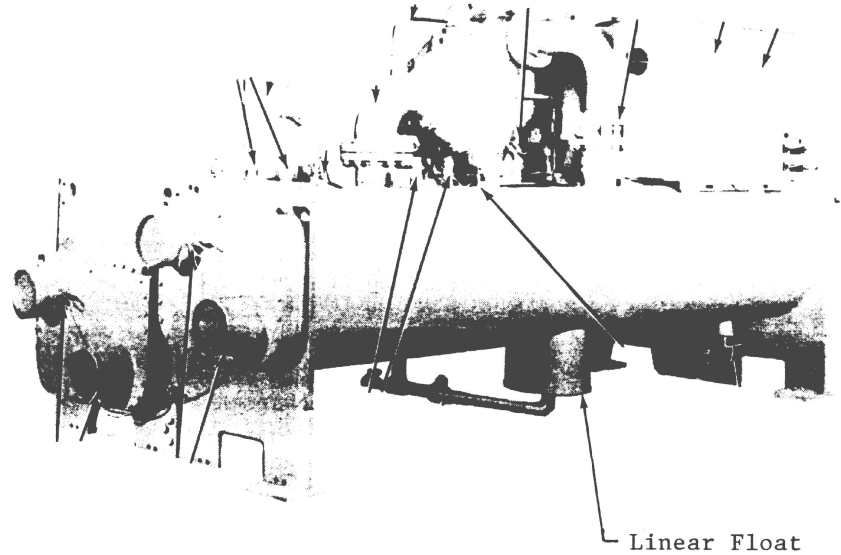
Table 1— Cooler Code

Cooler Code	Float Ball Style Machine Charge		Linear Float Style Machine Charge	
	Lbs.	Kg.	Lbs.	Kg.
40	1420	640	1270	576
41	1490	680	1340	607
42	1550	700	1400	635
43	1600	730	1450	658
50	1850	840	1650	748
51	1900	860	1700	771
52	1980	900	1780	807
53	2050	930	1850	839



Float Valve (FA Style)

19XL Rear View — Float Valve (FA Style)



19XL Rear View — Linear Float