



Title: **C9010 19DK/DM GROMMET SEAL RETAINER**

Number: **C9010**
Date: **6/25/90**
Supersedes: **NONE**
Date:

Models Affected: **19DK/DM Machines**

PURPOSE: To inform the service organization of a modification to the grommet seal to prevent the grommet from falling into the motor housing. The grommet provides a seal for the motor sensor wiring between the compressor base and the motor housing.

BACKGROUND: Service Bulletin C-8906 was issued to introduce a new grommet seal kit with a snap ring that prevented the grommet from "blowing" into the compressor sump from the motor housing. When this happens liquid refrigerant from the motor housing will enter the oil sump, especially on 31 frame compressors. It appears that occasionally the grommet can also fall into the motor housing. There is now a grommet retainer that can be installed to prevent the grommet from falling into the motor housing. This retainer has been installed on all machines built after January 1990.

PROCEDURE: The grommet retainer has been designed for ease of installation for all size compressors (see attached drawing). It gets placed on the threaded tube assembly between the 3/8" hex nut washer and the grommet. This retainer is available from RCD. The part number is 19DK 212 1052.

When the entire motor sensor wire assembly is ordered you will find that the threaded tube where all the components are attached has been elongated. The tube has been redesigned from 1 1/4 inches to 1 1/2 inches in length. This has been done to provide more space to accept the new retainer. This new retainer is not included in the wiring harness part number. It must be ordered as a separate item.

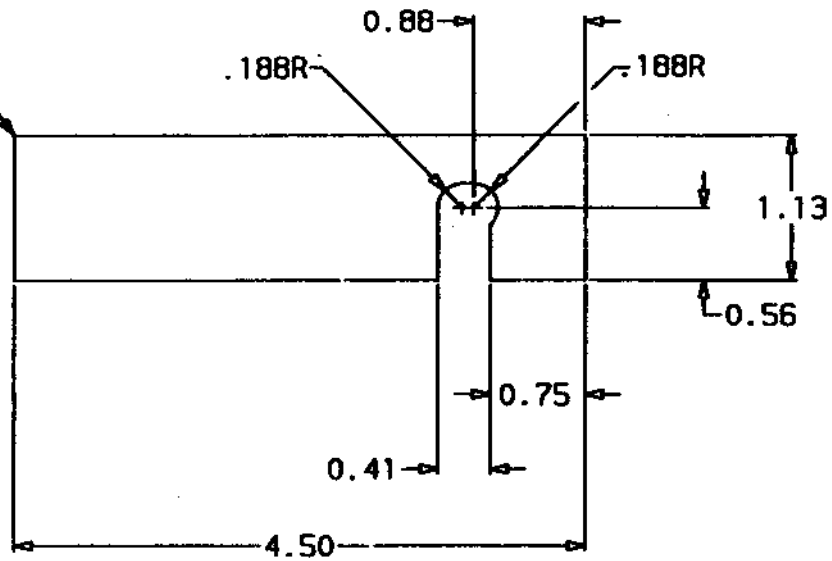
FILE INSTRUCTIONS: Compressor Motor Assembly

Prepared By: George J Doring
George Doring

Approved By: Alan M Johnson
Alan M. Johnson

MAIL KEYS: 2.45, 2.40B, 2.53,
5.14A, 2.33B, 2.33D

BREAK ALL SHARP CORNERS



MATERIAL
20 GA CRS
VA03-14

TITLE
RETAINER, GROMMET
(COMPRESSOR ASY)