



SERVICE BULLETIN

SUBJECT:

17DK SEAL LEAK POT ASSEMBLY

SUPERSEDE

BULLETIN:

DATE:

PAGE: OF:

Installation, repair and service and equipment referenced in this Service Bulletin should be undertaken only by qualified persons. Carrier Corporation (1) makes no representations or warranties, expressed or implied, concerning the accuracy, completeness or right to use the information contained herein, and (2) disclaims all liability for injuries, damages, infringements and other losses which may arise on account of, or which may result from, the use or application of any information, method or apparatus disclosed herein.

PURPOSE

This bulletin provides information on the redesigned seal oil pot assembly.

MACHINES AFFECTED

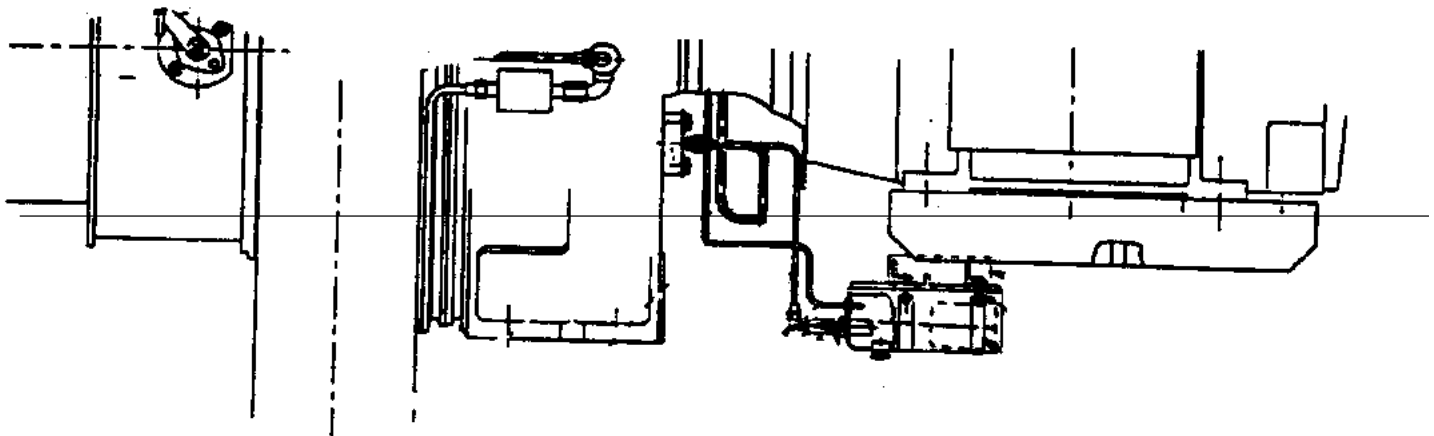
17DK/DM Compressor

BACKGROUND

The original seal pot, 17DK111-123, was built from 4" sch. #40 pipe with end plates welded. There was no access to the valve and float assembly. The new style, 17DR501-213, has a removable lid for easy access. See Figure 1. The change went into effect March 1989.

RECOMMENDATIONS

If the valve leaks in the old type seal pot assembly, the entire assembly should be replaced with the new style pot. The new pot may be attached to the motor support frame or to the unishell with a field fabricated mounting arrangement.



SERVICE BULLETIN

SUPERSEDE
BULLETIN:

DATE:

PAGE: OF:

Seal Pot Assembly

17DR501-213

includes:

Item 1: Valve

EC12AH010

Item 2: Gasket

19DA11-5141

*Item 3: Check Valve

EC37JD031*(not included in assembly)

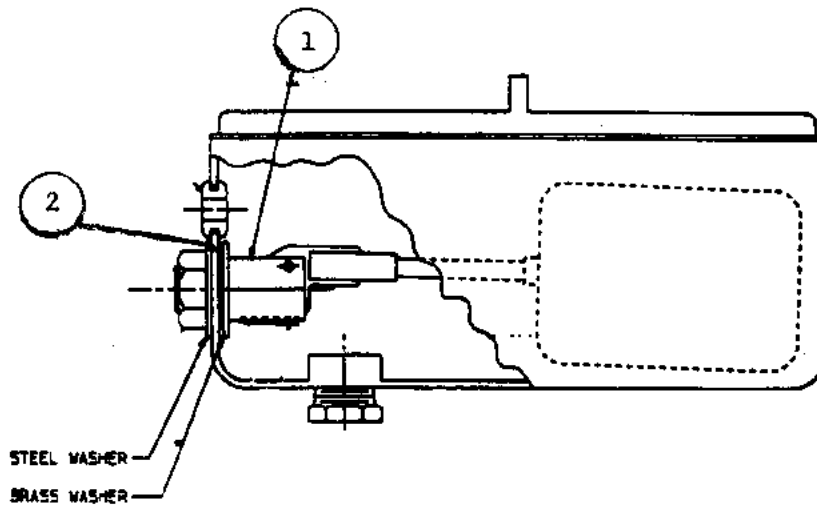


FIGURE 1 - NEW STYLE 17DR501-213

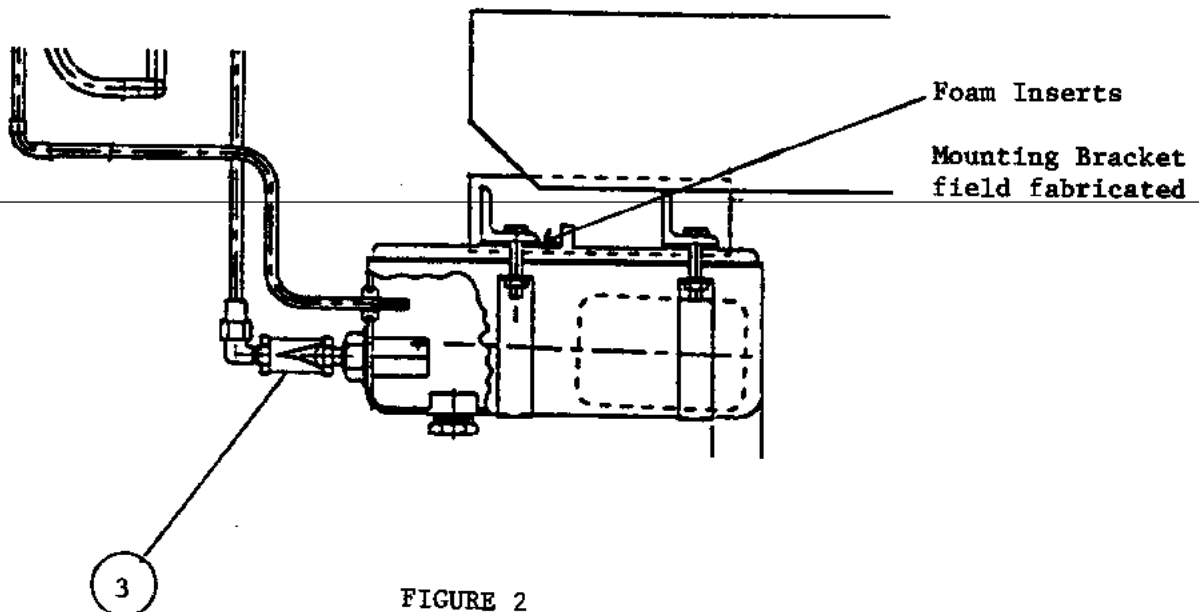


FIGURE 2