

Title: **LOOSE TARGET BAFFLES**

Number: C8913

Date: 12/13/89

Supersedes: NEW

Date:

Models Affected: 19DG/DH/DK/DM

Purpose: To advise the field regarding locations for cutting into affected units to investigate noisy target baffles.

Background: Noise coming from a loose target baffle usually is higher at low loads and may disappear at full load.


Procedure: Attached are sketches showing location of target baffle in affected units. Section C-C shows where baffle is located inside unit. Note location with respect to supports for compressor platform (if present), and to compressor discharge.

Make a cut on same side as the control panel under the volute above braces. The cut should be large enough to reach the weld at the bottom of the baffle with an electrode, see Detail A. Lay 2 - 3 weld beads on top if that bead is broken. Check the braces. Make the skip welds continuous.

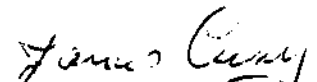
VAO/sm

Attachment

MAIL KEYS: 2.33B, 2.33D, 2.40B, 2.45, 2.53, 5.14A and 5.14B

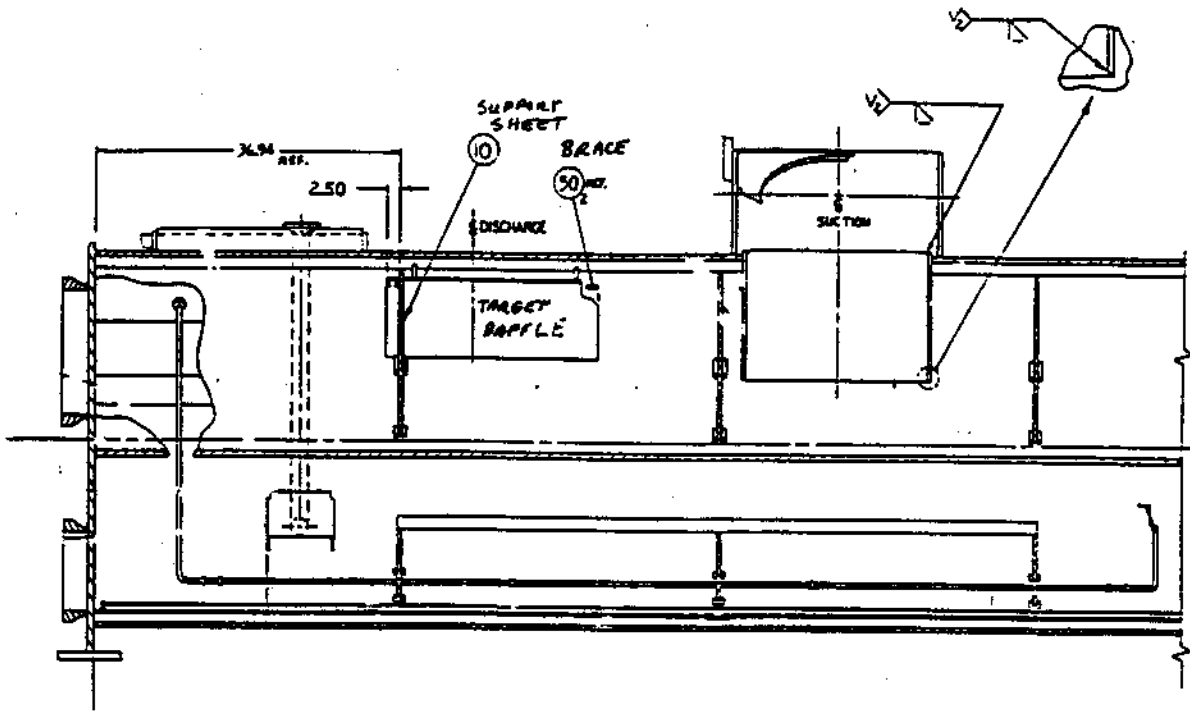

Vance A. Osborne

Prepared By: _____

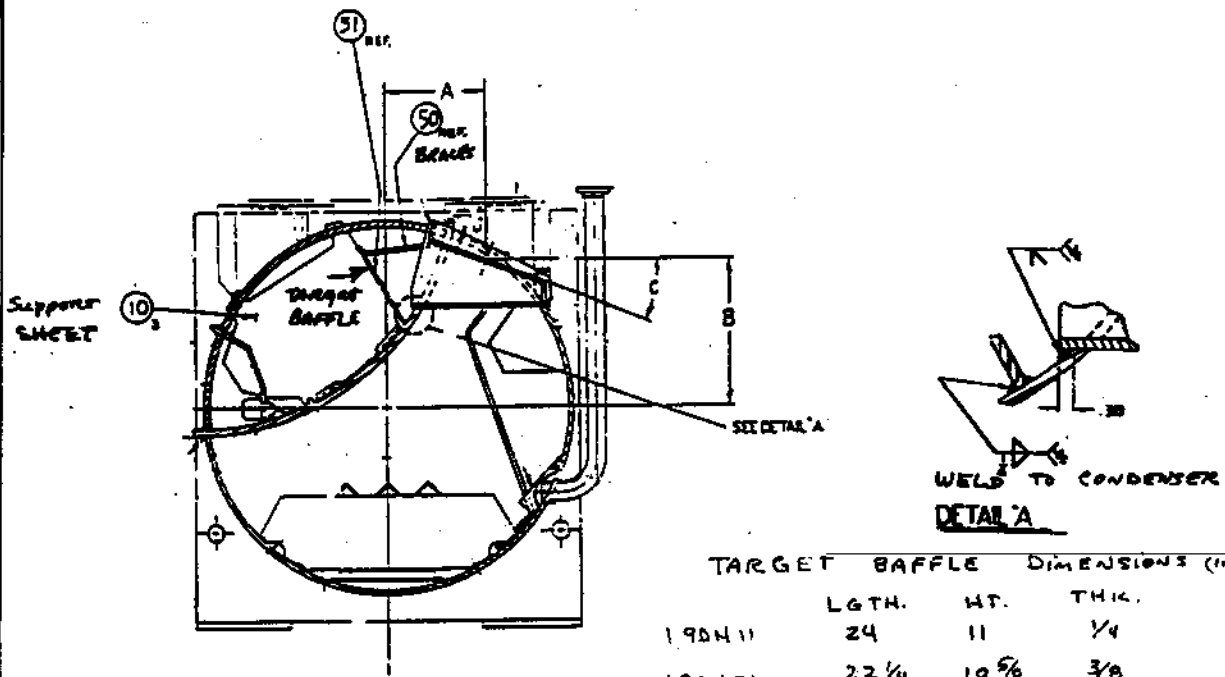

James N. Cuny

Approved By: _____

DRIVE
END



SECTION C-C



SECTION B-B

TARGET BAFFLE DIMENSIONS (IN.)

	LGTH.	HT.	THK.
190411	24	11	1/4
190421	22 1/4	10 5/8	3/8
190431	29	12 1/2	3/8