

Title: G E HIGH VOLTAGE STARTERS

Number: C8702

Date: 3/6/87

Supersedes: NEW

Date:

Models Affected: 17 AND 19

PURPOSE

This bulletin provides information about a safety alert issued by General Electric for "Limitamp" high voltage starters Type IC7160 manufactured between 1976 and April, 1983.

BACKGROUND

The attached G E Product Service Bulletins # 008 and # 009 describe possible problems with the mechanisms which engage and disengage the contactor from the power buss bars and operate the shutter which covers the buss bars when the contactor is disengaged from the buss bars.

We have provided G E with the names and addresses of 160 domestic Carrier customers who we believe have one or more of the subject starters. G E will notify these customers of the problem by sending them the bulletins. G E has agreed to assist the owner with testing and any necessary repairs at no charge if requested by the owner.

RECOMMENDATION

Owner inquires which result from this notification should be directed to the name and phone number on the G E bulletins.

It is recommended that all power to high voltage starters be disconnected prior to opening the doors of the high voltage compartment(s).

INTERNATIONAL

The attached bulletins are not being sent to owners outside the United States because we do not have accessible records which indicate international usage of G E high voltage starters. Copies of the G E bulletins should be sent to any owners which are believed to have one of these starters.

Prepared By: _____

Lee Mount
Lee Mount

Approved By: _____

James Cuny
James Cuny

GENERAL ELECTRIC COMPANY

**GENERAL PURPOSE
CONTROL DEPARTMENT
MEBANE OPERATIONS**

PRODUCT SERVICE BULLETIN

BULLETIN # 008

**SUBJECT- SAFETY ALERT!
LIMITAMP SHUTTER ROLLER SHAFT**

DATE - 9/12/85

PAGE - 001

SUPERSEDES ISSUE DATE -

PREPARED BY - R.C. Roessler

ISSUED BY - R.C. Roessler

The attached notification is being issued to all Sales and Service Organizations which deal with GE Mebane Limitamp Medium Voltage Controllers.

This information should be passed on to all customers, OEM's and contractors in your area that use GE Limitamp Starters. If additional copies are required please notify R. C. Roessler at GPC - Mebane.

22380

TO ALL USERS OF G.E. LIMITAMP IC7160 1976 TO APRIL, 1983.

We have had two isolated reports of the breakage of a mechanical interlock in Limitamp starters built during the above time period allegedly resulting in an electrical hazard to an operator when inserting a Limitamp contactor into its compartment. The attached Picture (Figure A) shows the detail of the part and the mode of breakage.

The cause of the failure in these incidences has been identified as a poor weld (cold) resulting in insufficient weld bond joining the lever arm to the shutter roller shaft. We changed our design and increased the welding area over two years ago so only units shipped prior to '83 with date codes AM to DW may be affected. Date codes can be located on a sticker inside the low voltage door.

In order to verify the integrity of the handle and shutter mechanism safety interlock system you are requested to conduct a proof test on all G.E. Limitamp High Voltage Motor Starters Type IC7160 with date codes as stated above.

This test should be performed on the first scheduled maintenance period, or the first time the contactor is removed from the starter equipment.

A suggested test method is as follows:

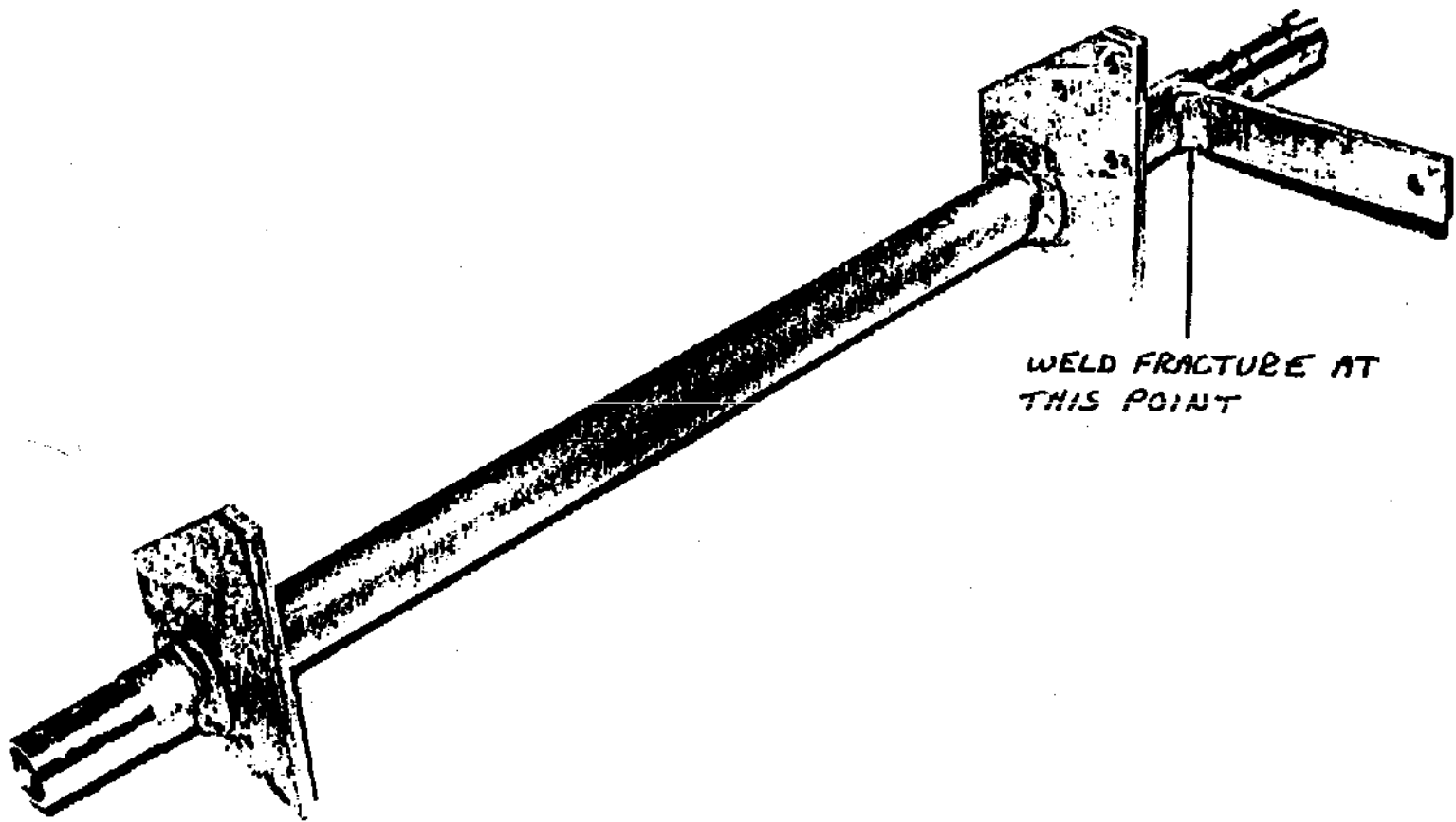
- 1) Push depressor in and rotate Limitamp operating handle to OFF position, pusher out.
- 2) Electrically isolate the Limitamp by opening the upstream breaker or disconnect supplying the Limitamp lineup. All potential must be removed from the line side horizontal and vertical bus, and load side also if Limitamp is being back fed.
- 3) Rotate the handle to a mid position; jam the mechanism by inserting a wooden brace between the cam and handle as illustrated in Fig. (B). With a small amount of pressure applied to the handle, measure the distance from the handle to the floor; then, apply a 100 pound weight to the handle; remove the weight and with a small amount of handle pressure, remeasure the handle position. Both measurements should be essentially the same.
- 4) If a significant variance is found (e.g. .25") do not reinsert the contactor and contact your G.E. Representative or the Mebane Factory Product Service, P.O. Box 489, Mebane, N.C. 27302, ATTN: R.C. Roessler, Jr., or call (919) 563-7367.

OVER

Upon notification of any significant variance we will supply new shutter roller shaft at no charge to the customer for installation.

Also, during the time period 1983 Mebane received a report of a situation where an electrician had failed to turn the Limitamp operating handle off and proceeded to defeat the high voltage door safety interlock to gain access to the high voltage contactor. During reinsertion of this contactor it was accidentally engaged into the vertical bus due to the handle not being in the full off position with the "pusher out". Although our Instruction Manual GEH-3091C clearly describes the ON and OFF sequence of the handle, we elected to improve our design. This design improvement added material to the lower portion of the contactor operator preventing accidental contact with the vertical bus even when the handle is not in its full OFF position as is on all Limitamps shipped after April, 1983.

If any customers would like updated contactor operators please notify R. C. Roessler per above and we will supply new operators at no charge for customer installation.



WELD FRACTURE AT
THIS POINT

FIG. A
SHUTTER ROLLER SHAFT

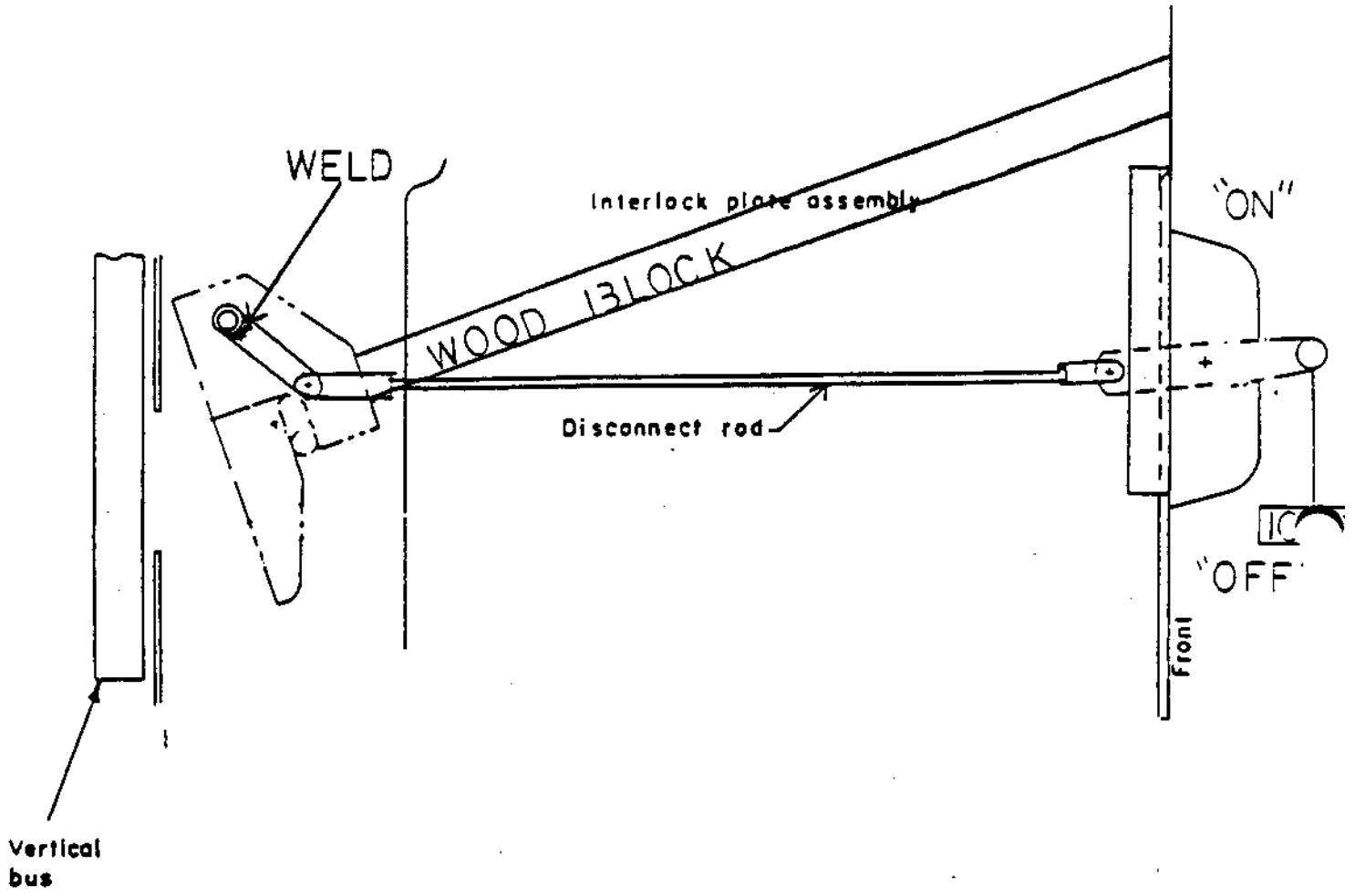


FIGURE B

10

GENERAL ELECTRIC COMPANY

**GENERAL PURPOSE
CONTROL DEPARTMENT**
MEBANE OPERATIONS

PRODUCT SERVICE BULLETIN

BULLETIN # 009

SUBJECT- LIMITAMP VERTICAL BUS SHUTTERS

DATE - 11/7/85

PAGE -

SUPERSEDES ISSUE DATE -

PREPARED BY- RC Roessler

ISSUED BY - RC Roessler

We have recently received isolated reports where a customer experienced difficulty in racking a Limitamp contactor into the vertical bus due to interference caused by the vertical bus shutter assembly.

Upon examination we found that one of the shutter stops located on the bottom of the shutter guide had broken, allowing the shutter to become cocked at an angle blocking the opening to the vertical bus, preventing insertion of the contactor into the vertical bus.

If you are contacted by any customer experiencing this problem have them check the suspect shutter guide and associated stops.

If replacement shutter guides with stops are required please contact General Electric Co., P.O. Box 489, Mebane, NC 27302, Attn: R. C. Roessler.

RC Roessler
Product Service Specialist

/mah
2393D