



**UNITED
TECHNOLOGIES
CARRIER**

Commercial Division
Carrier Corporation

BULLETIN: CA-SB-19-E-78-91
DATE: 4/4/75
PAGE: 1 OF: 3

SERVICE BULLETIN

SUBJECT:

19 SERIES HIGH VOLTAGE TERMINAL THREAD SEALING

SUPERSEDE
BULLETIN:

DATE:
PAGE: OF:

Installation, repair and service and equipment referenced in this Service Bulletin should be undertaken only by qualified persons. Carrier Corporation (1) makes no representations or warranties, expressed or implied, concerning the accuracy, completeness or right to use the information contained herein, and (2) disclaims all liability for injuries, damages, infringements and other losses which may arise on account of, or which may result from, the use or application of any information, method or apparatus disclosed herein.

PURPOSE: To provide information necessary to distinguish differences in styles of hi and lo voltage terminals.

MACHINES AFFECTED: 19EA.

MATERIALS REQUIRED: Refer to tables under applicable figures.

PROCEDURE:

Figure	Description		Used On	If Service is Required
1.	H	Design 1 - Rigid. Terminal with 1" NPT.	19EA machines shipped before 5/3/71.	Parts no longer available. Change to Design 3.
2.	I V O	Design 2 - Rigid terminal with 1" light bulb thread. Insulator O.D. - 1.62" Textolite terminal board.	Machines shipped from 5/3/71 (approximate comp. s/n 100434) to 3/74.	Parts are still available. Can be converted to Design 3 for greater strength and leak integrity.
3.	L T	Design 3 - Rigid terminal with 1-1/4" light bulb thread. Insulator O.D. - 1.88" molded black phenolic terminal board.	Machines shipped after 3/74.	Use Design 3.
4.	L O V	Design 1 - Flat Textolite terminal board.	Machines shipped prior to 3/74.	Parts are no longer available, change to Design 2.
5.	O L T	Design 2 - Molded black phenolic terminal board.	Machines shipped after 3/74 (approximate).	Use Design 2.

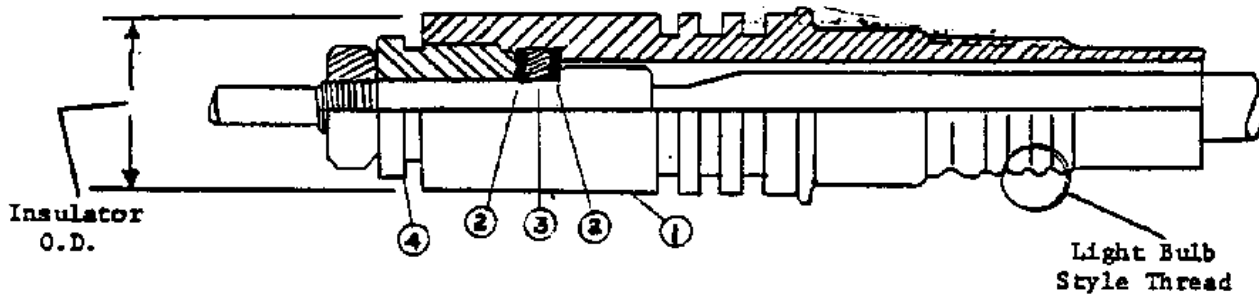
SERVICE BULLETIN

SUPERSEDE

BULLETIN:

DATE:

PAGE: OF:



Item	Description	Part No.	
		2	3
Not Shown	Terminal Board	19EA52-1183	19EA53-1183
1	Terminal Insulator	19EA41-1433	19FA502-1504
2	Terminal Retainer	19EA51-1832	19FA502-1242
3	Packing Ring	19EA51-1942	19FA502-1232
4	Packing Gland	19C65-4122	19FA502-1222

Fig. 1, 2, 3



SERVICE BULLETIN

SUPERSEDE
BULLETIN:
DATE:
PAGE: OF:

Tighten this nut sufficiently to completely flatten Belleville Washer (Item 3).

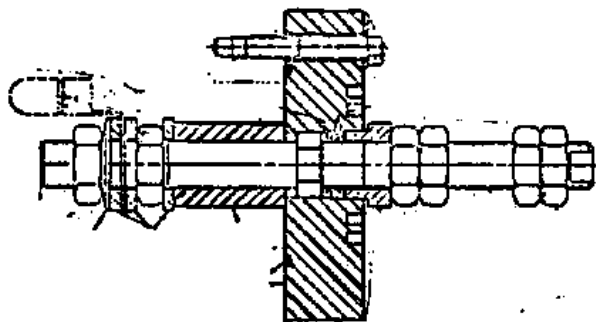


Fig. 4

This dimension to be checked at assembly. A dimension less than 6.00 indicates hex is not properly engaged into socket in terminal board.

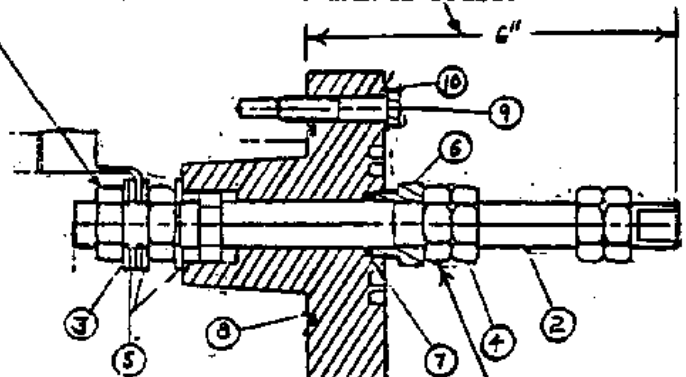


Fig. 5

Tighten to prevent refrigerant leakage 120 lb-in. max.

Item	Part No.	No. Reqd.	Description
1	19EA42-1183	1	Terminal Board
2	19EA42-353	2	Stud, Terminal Assembly
3	AU51AS541*	2	Belleville Washer
4	AT14QA361*	12	3/4-10 Brass Jam Nut
5	AU02QA361*	6	3/4" Brass Washer
6	19EA41-1142*	2	Packing Gland
7	19EA41-2432	2	Packing Ring
8	KK71GZ051*	1	O-Ring, 5-1/8 O.D. x 4-7/8 I.D. x 1/8
9	AA06BS235*	10	3/8-16 x 2" Screw (Galvanized)
10	AU02AB242*	10	3/8" Plain Washer (Galvanized)

*Common to Fig. 4 & 5.