



**UNITED
TECHNOLOGIES
CARRIER**

Commercial Division
Carrier Corporation

BULLETIN: CA-SB-19-PA-76-78
DATE: 4/23/76
PAGE: 1 OF: 4

SERVICE BULLETIN

SUBJECT:

19EA MOTOR COOLING, REFRIGERANT FILTER INSTALLATION

SUPERSEDE
BULLETIN:
DATE:
PAGE: OF:

Installation, repair and service and equipment referenced in this Service Bulletin should be undertaken only by qualified persons. Carrier Corporation (1) makes no representations or warranties, expressed or implied, concerning the accuracy, completeness or right to use the information contained herein, and (2) disclaims all liability for injuries, damages, infringements and other losses which may arise on account of, or which may result from, the use or application of any information, method or apparatus disclosed herein.

PURPOSE: To transmit instructions to be used when installing a refrigerant filter on a 19EA.

**MACHINES
AFFECTED:** 19EA's built prior to 10/75 (approximately s/n 24177 and lower).



**UNITED
TECHNOLOGIES
CARRIER**

Commercial Division
Carrier Corporation

BULLETIN: CA-SB-19-FA-76-78
DATE: 4/23/76
PAGE: 2 OF: 4

SERVICE BULLETIN

SUPERSEDE
BULLETIN:
DATE:
PAGE: OF:

19EA MOTOR COOLING REFRIGERANT FILTER INSTALLATION

Refer to Figure 1 and Refrigerant Filter Package 19EA660021

1. Drill and tap $1/4$ - 20 holes $3/4$ " deep in the edge of the tube sheet near the dehydrator. Make holes about 15" apart with one near the top of the sheet.
2. Attach the steel bar (Item 3) to the tube sheet. The washers (13) behind the bar stand it off the tube sheet so the hose clamp (1) can be looped over the bar to support the lower end of the filter housing.
3. Install two cartridges (4a) in the filter housing, then mount assembly on the tube sheet.

Note: If an extra felt washer is needed to provide a snug fit of the cartridges in the housing, PLACE THE FELT BETWEEN THE TWO CARTRIDGES.

4. Remove the existing refrigerant strainer housing.
5. Pipe up the new filter using Figure 1 as a guide.

Note: The coupling (5) and tee (8) are to be installed close enough to the threaded elbows (6) to permit the els. and and the first piece of tubing to be screwed into the filter head, but far enough away so subsequent soldering won't damage the pipe thread sealant at the elbows (6).

6. Leak test new connections and then insulate the filter and piping.



**UNITED
TECHNOLOGIES
CARRIER**

Commercial Division
Carrier Corporation

BULLETIN: CA-SB-19-PA-76-78
DATE: 4/23/76
PAGE: 3 OF: 4

SERVICE BULLETIN

SUPERSEDE
BULLETIN:
DATE:
PAGE: OF:

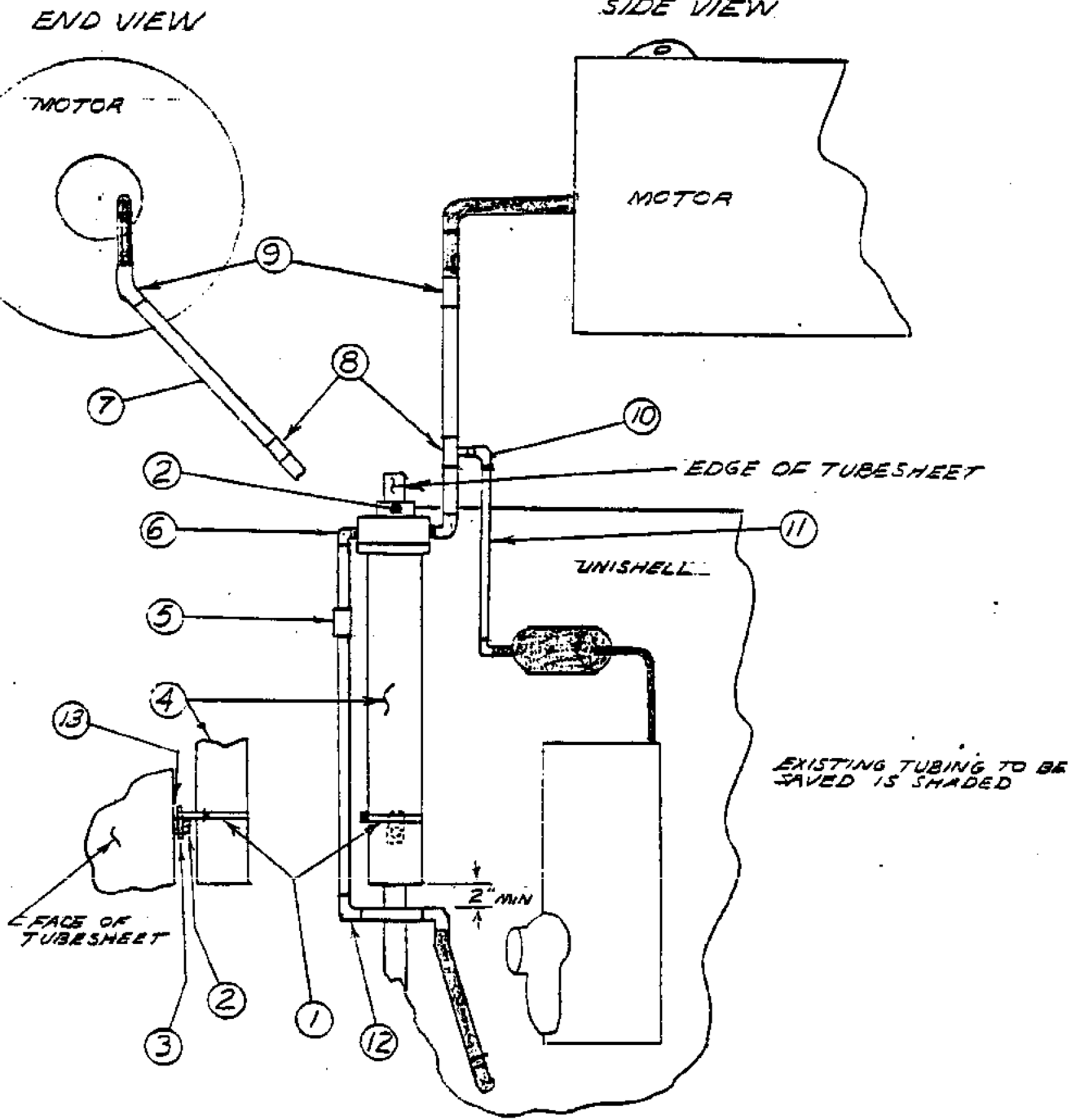
19EA660021

19EA MOTOR COOLING REFRIGERANT FILTER INSTALLATION

<u>Item</u>	<u>Description</u>	<u>Qty.</u>	<u>Part No.</u>
1	Hose Clamp	1	KA69MZ02L
2	Screw 1/4 - 20 x 3/4" lg.	2	AA06BR168
3	Steel Bar	1	
4	Filter Assembly	1	KH33QA180
4a	Cartridges	2	17540-00L
5	Coupling 3/4" ODS	2	DE01BA401
6	90° el 3/4" NPT x 3/4" ODS	2	DE16CA401
7	Copper Tubing 3/4"	6 ft.	
8	Tee 3/4" x 3/4" ODS x 1/2 ODS	1	DE10BA403
9	45° el 3/4" ODS	2	DE24BA401
10	90° el 1/2" ODS	2	DE13BA201
11	Copper Tubing 1/2"	2 ft.	
12	90° el 3/4" ODS	2	DE12BA401
13	Washer 1/4"	2	
14	Insulation for 6' of 3/4" tubing 3' of 1/2" tubing 2' x 2' sheet for filter housing		

SERVICE BULLETIN

SUPERSEDE
BULLETIN:
DATE:
PAGE: OF:



19EA REFRIGERANT FILTER
FIG 1