



**UNITED
TECHNOLOGIES
CARRIER**

Commercial Division
Carrier Corporation

BULLETIN: CA-SB-17-74-24

DATE: 1/11/74

PAGE: 1 OF 4

SERVICE BULLETIN

SUPERSEDE
BULLETIN:

DATE:

PAGE: OF:

SUBJECT:

17DA SHAFT MOVEMENT SWITCH

Installation, repair and service and equipment referenced in this Service Bulletin should be undertaken only by qualified persons. Carrier Corporation (1) makes no representations or warranties, expressed or implied, concerning the accuracy, completeness or right to use the information contained herein, and (2) disclaims all liability for injuries, damages, infringements and other losses which may arise on account of, or which may result from, the use or application of any information, method or apparatus disclosed herein.

PURPOSE

To inform the field that the 17DA now contains an internal excess shaft movement switch.

MACHINES AFFECTED

All 17DA compressors shipped after August 1972.

BACKGROUND

17DA machines having an internal excess shaft movement switch can be identified by the number of terminals in the junction box on the side of the compressor facing the cooler.

Figure 1 illustrates the terminal box and the terminal wiring.

The switch mechanism (See Figure 3) is located approximately midway between the journal bearings. The switch is tripped by a pin protruding from the shaft.

The trip is positioned so that it will be tripped if the shaft moves axially due to thrust failure when the shaft is rotating.

The trip pin extending from the shaft strikes the trip (2) causing it to rotate off the spring loaded switch (5) plunger. The switch then either "makes" or "breaks" the safety circuit controls to trip the machine "off the line." Resetting is accomplished by merely depressing switch (5) plunger and rotating trip (2) to hold the plunger in a depressed position.

SERVICE BULLETIN

SUPERSEDE
BULLETIN:
DATE:
PAGE: OF:

Compressors with excess movement switch have 4 terminals. Without the switch there are only 2 terminals.

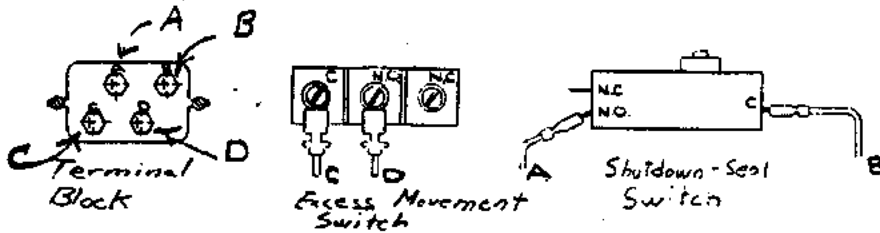
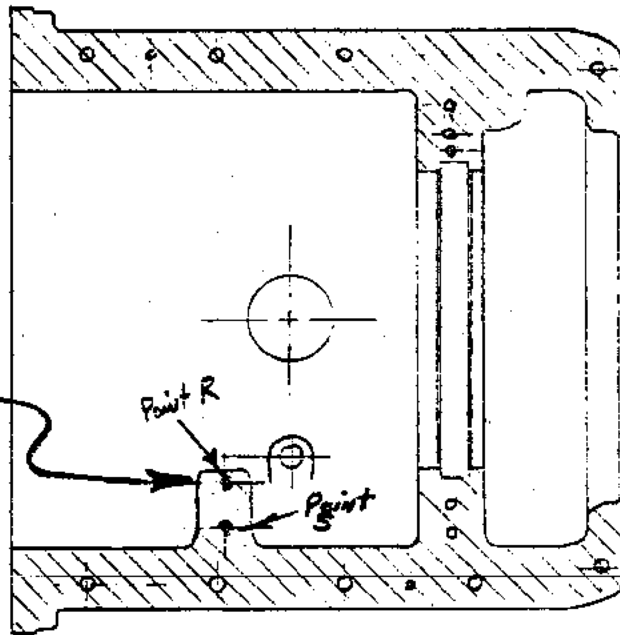


FIGURE 1

Switch bracket mounted here. See Figure 3 for point rands.



17DA Bearing Chamber Lower Half

FIGURE 2



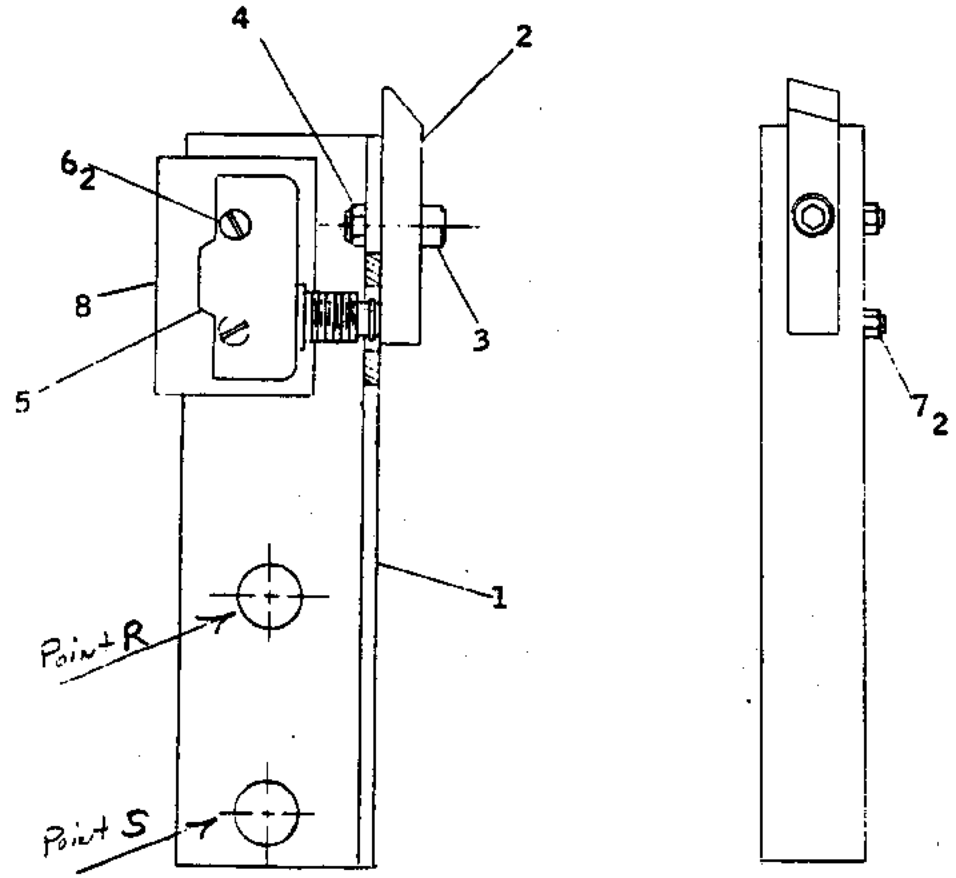
**UNITED
TECHNOLOGIES
CARRIER**

Commercial Division
Carrier Corporation

BULLETIN: CA-SB-17-74-24
DATE: 1/11/74
PAGE: 3 OF 4

SERVICE BULLETIN

SUPERSEDE
BULLETIN:
DATE:
PAGE: OF:



ITEM	PART NO.	REQ'D.	DESCRIPTION
1	17DA71-2592	1	DISPLACEMENT SW. BODY
2	17EA902-1802	1	TRIP
3	AA50FR164	1	ALLEN SHOULDER BOLT
4	AT54AB131	1	HEX, NUT #10-24, LOCK
5	17EA902-1822	1	SWITCH, SNAP ACTION
6	AC41AB086	2	PAN HD. MACHINE SCREW #6-32 x 1" LG.
7	AT39AB081	2	HEX. NUT #6-32
8	17EA902-1792	1	INSULATOR

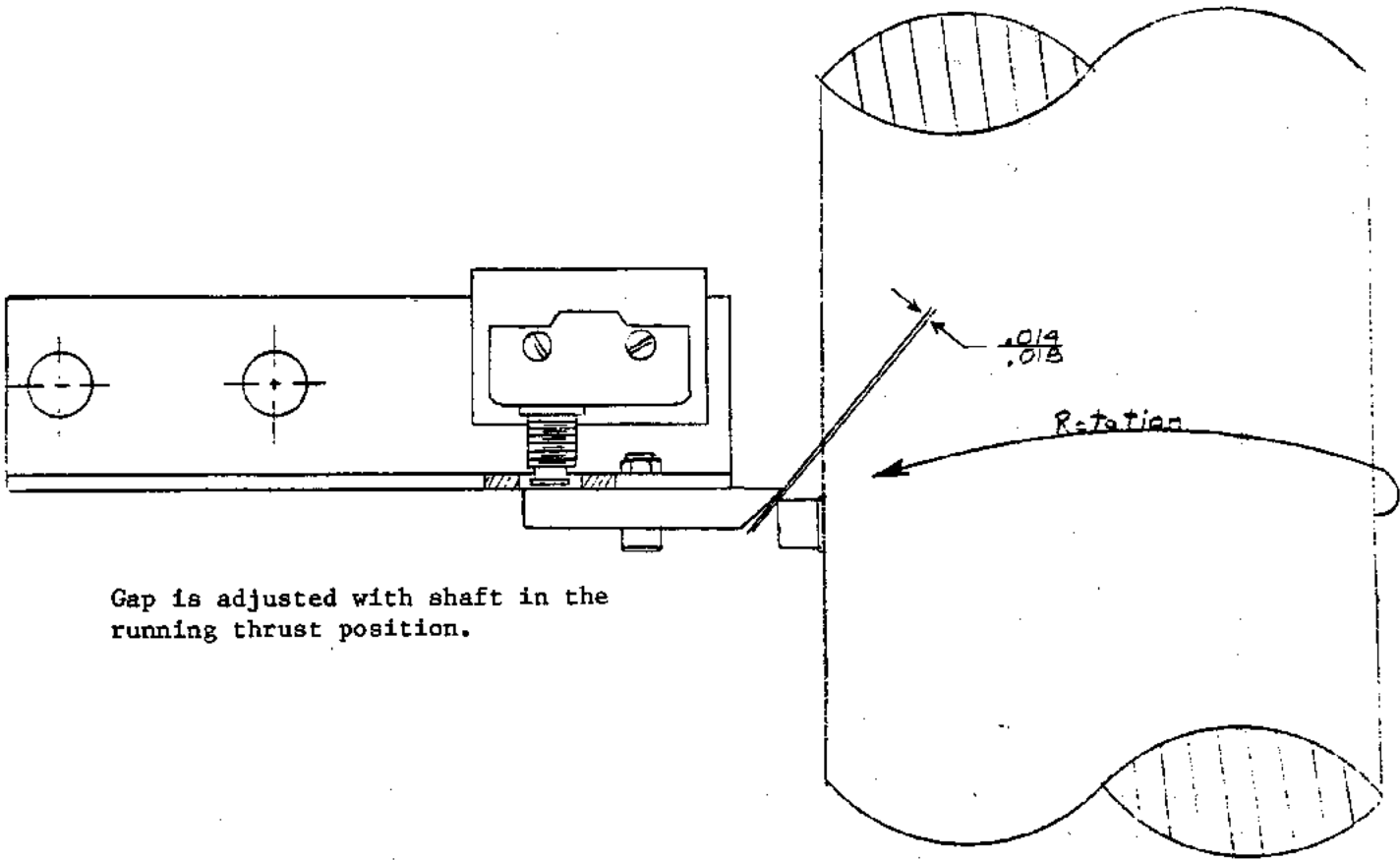
SHAFT DISPLACEMENT TRIP ASSEMBLY

SERVICE BULLETIN

SUPERSEDE
BULLETIN:

DATE:

PAGE: OF:



Gap is adjusted with shaft in the running thrust position.

TOP VIEW OF SHAFT AND SWITCH

FIGURE 4