

Subject: 19D SERIES HIGH DISCHARGE TEMP. CUTOUT
Reference:
Mail Keys:
Distribution: Cent. FER 83-5

1.0 PURPOSE

To furnish a procedure for typical field installation of compressor high discharge temperature cutout.

2.0 MODELS AFFECTED

19D series machines with extreme operating conditions that may subject the compressor to high temperatures.

3.0 GENERAL

R11/R113 machines with prolonged low load operation or heat reclaim chillers with low load high head operation may benefit from a discharge thermostat to prevent refrigerant breakdown or mechanical damage from overheating. Should such protection be necessary, this procedure is intended to provide a typical means of installing the device and wiring it into the safety circuit.

3.1 Thermostat: Fenwall Model 17100-0
Carrier Part #19R17-1052-1

4.0 TESTING

Prior to installation, the switch should be tested in an oil bath to confirm its trip point does not exceed 225 F.

5.0 INSTALLATION

- 5.1 Locate, drill and tap a 1/2 N.P.T. hole in the side of the volute as shown in Figure 1.
- 5.2 Install thermostat assembly, using Loctite 271 thread sealant.
- 5.3 The switch must be wired in the safety circuit in the chiller control console. On 19DG and newer machines, one convenient place is between terminals 40 and 41 on line 14 of the schematic. Of course, the existing pink jumper wire must be removed. All wiring must conform to your local electrical code.

FILING INSTRUCTIONS: Centrifugal FER
TAB: 19D Controls

Prepared by: *Joseph Catechinos* Approved by: *Alan M. Johnson* Date: 4-21-83
M-5121 (2-82) Restricted Information Copy — For Internal Use Only

Cent. FER 83-5

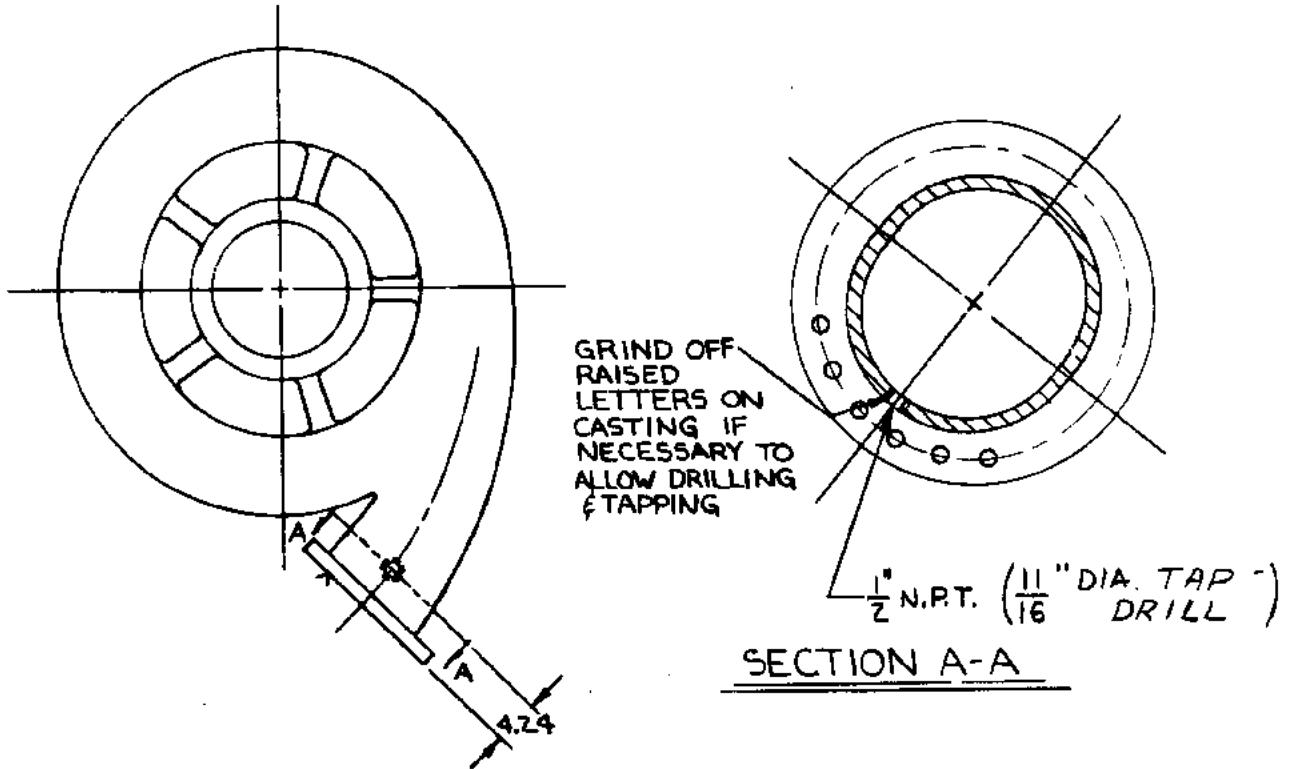


Figure 1