

NOTES:

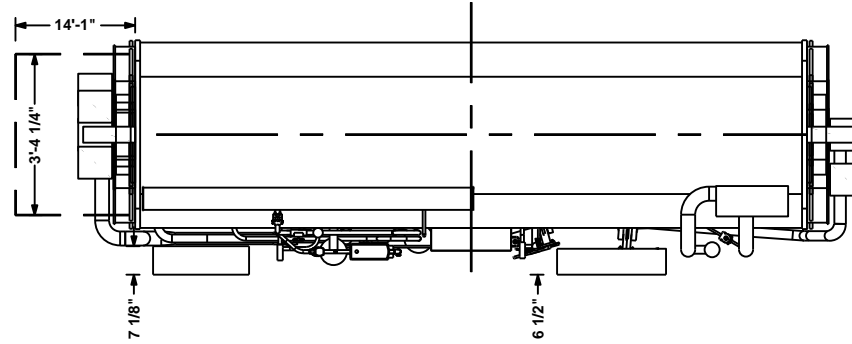
1. DO NOT USE THE CHILLER TO SUPPORT THE WATER OR VENT PIPING
2. WATER NOZZLE CONNECTIONS MUST BE INSTALLED AS SHOWN.
3. TOWER WATER MUST ENTER ABSORBER FIRST FOR PROPER PERFORMANCE.
4. DUE TO MANUFACTURING TOLERANCES, DIMENSIONS MAY VARY FROM THOSE SHOWN. IF PIPING IS INSTALLED PRIOR TO INSTALLATION OF THE UNIT, PROVISIONS MUST BE MADE FOR ADJUSTMENT OF THE PIPING TO ACCOMMODATE THE CHILLER CONNECTIONS.
5. UNIT TO BE INSTALLED IN AN INDOOR LOCATION WITH THE AMBIENT TEMPERATURE MAINTAINED BETWEEN 35°F MIN AND 104°F MAX.
6. A FLOOR DRAIN NEXT TO THE UNIT IS RECOMMENDED.
7. FLOOR TO BE LEVEL WITHIN 1/4" AND CAPABLE OF SUPPORTING THE OPERATING WEIGHT.
8. SPECIAL ISOLATION MOUNTS, OTHER THAN ISOLATION PADS FURNISHED BY YORK, MAY CAUSE INTERFERENCE WITH UNIT PIPING AND MUST BE CLEARED AS A SPECIAL.
9. UNITS ARE FABRICATED WITH 1/2" THICK SHIM PLATES UNDER STEAM INLET END, WITH PITCH TOWARD CONDENSATE OUTLET END.
10. STEAM VALVES ARE SELECTED FOR THE SPECIFIED OPERATING CONDITIONS. STEAM VALVE INFORMATION IS NOT SUPPLIED ON THIS DRAWING.
11. AN ADDITIONAL HEIGHT OF 16" ABOVE THE CHILLER SHOULD BE INCLUDED TO ACCOMMODATE WATER, STEAM AND VENT PIPING.
12. RUPTURE DISK MOUNTED IN 1-1/2"-150# ANSI FLANGE WITH 1-1/2" PLAIN PIPE STUB EXTENSION. VENTING TO BE INSTALLED BY OTHERS. Refer to Installation Manual for Service Clearance requirements.
13. UNIT WEIGHTS :
 SHIPPING WEIGHT : 13124 Lbs.(total)
 RIGGING WEIGHT : 13024 Lbs.
 OPERATING WEIGHT : 17651 Lbs.

NOZZLE LEGEND

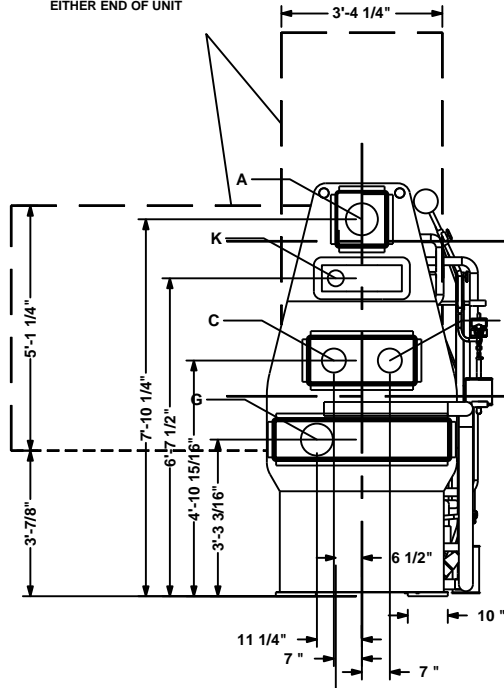
	PASSES	INLET	OUTLET	SIZE
ABSORBER	3	G	I	8
CONDENSER	1	B	A	8
EVAPORATOR	4	C	D	6
GENERATOR	3	L	K	3-1/2

TUBE REMOVAL SPACE
EITHER END OF UNIT
(46 - 60" Opposite End)

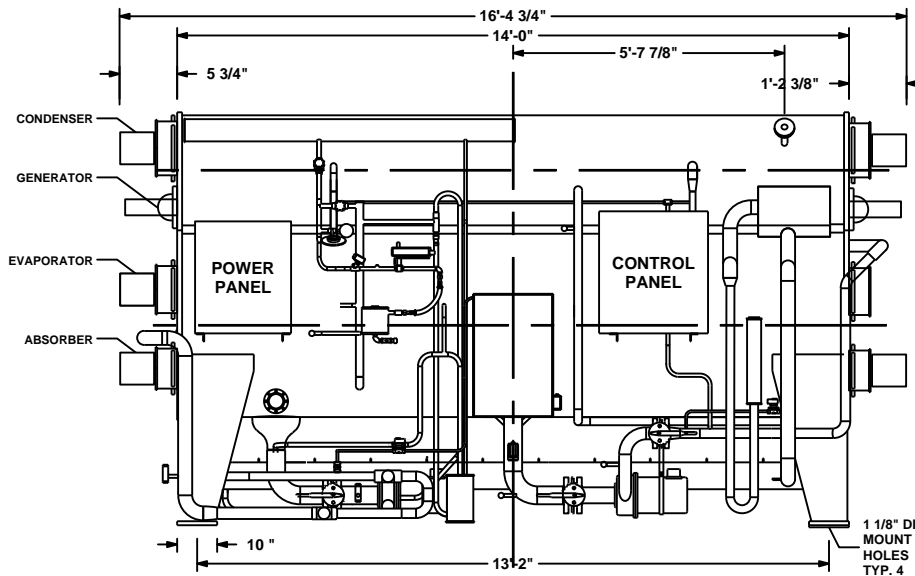
PLAN



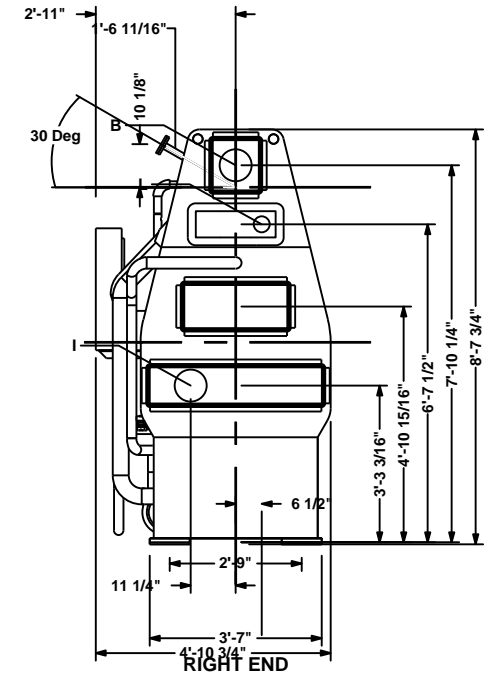
TUBE REMOVAL SPACE
EITHER END OF UNIT



LEFT END



ELEVATION



RIGHT END

PRODUCT DRAWING

ABSORPTION CHILLER
 MODEL: MODEL 2B1
NOT FOR CONSTRUCTION

Project Name: Southwestern Energy Corp HQ
 Location:
 Engineer:
 Contractor:
 For:

Sold To:
 Cust Purch Order#:
 Contract#: 3E510246
 UNIT TAG: CH-4

Date: 9/27/2013 17:34:10
 Version: 1.0.1.0.1
 Form No.:
 Dwg. Lev.:
 Dwg. Scale : NTS

