

VSC Impeller Service

Always Think Safety!

Personal

Your own

Others'

Hydraulic

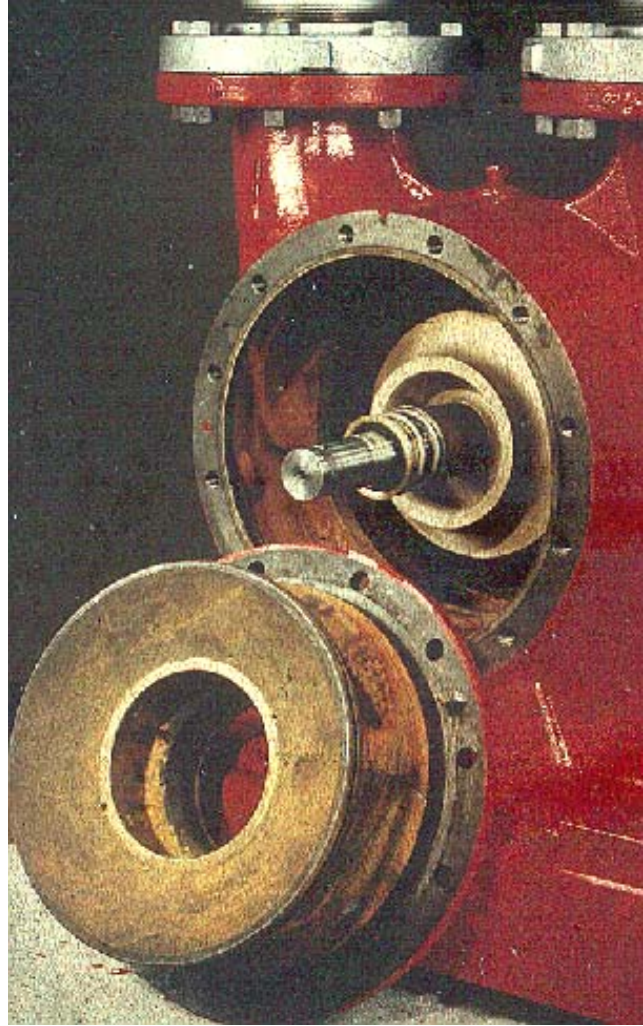
Electrical

System

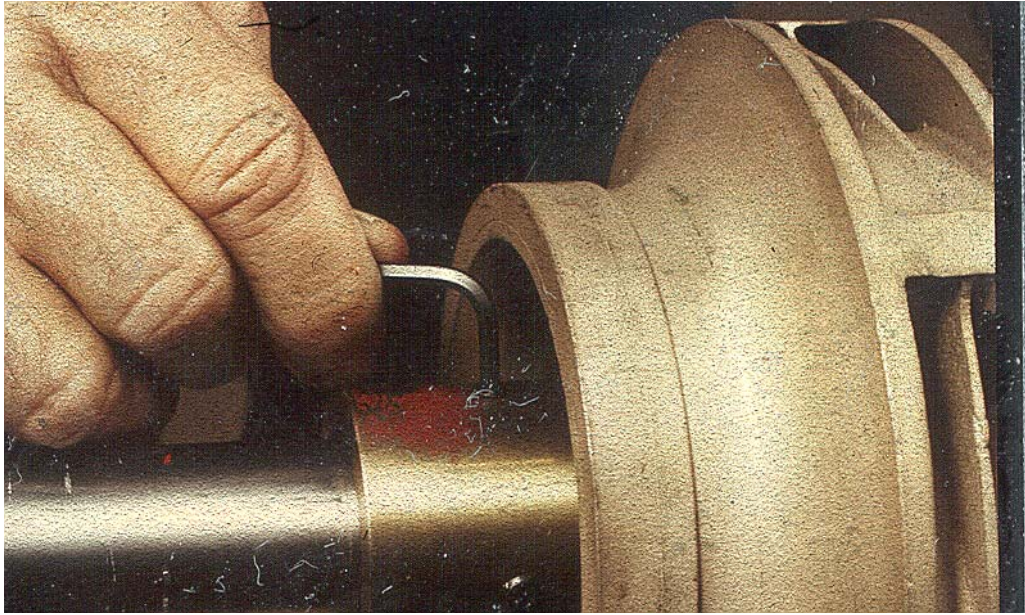
Work Environment

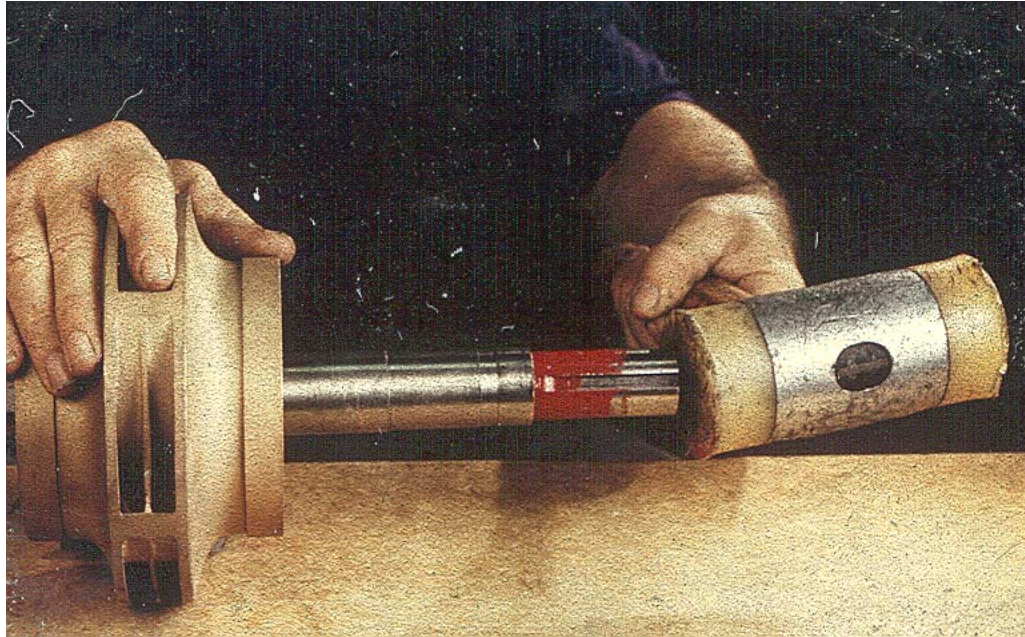
Shutdown

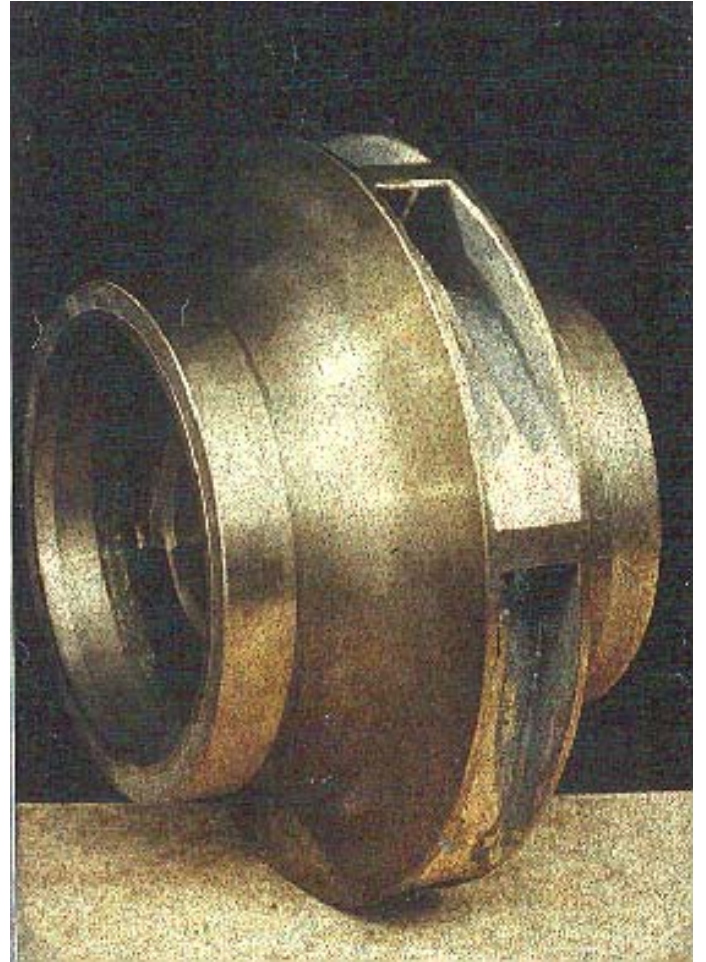
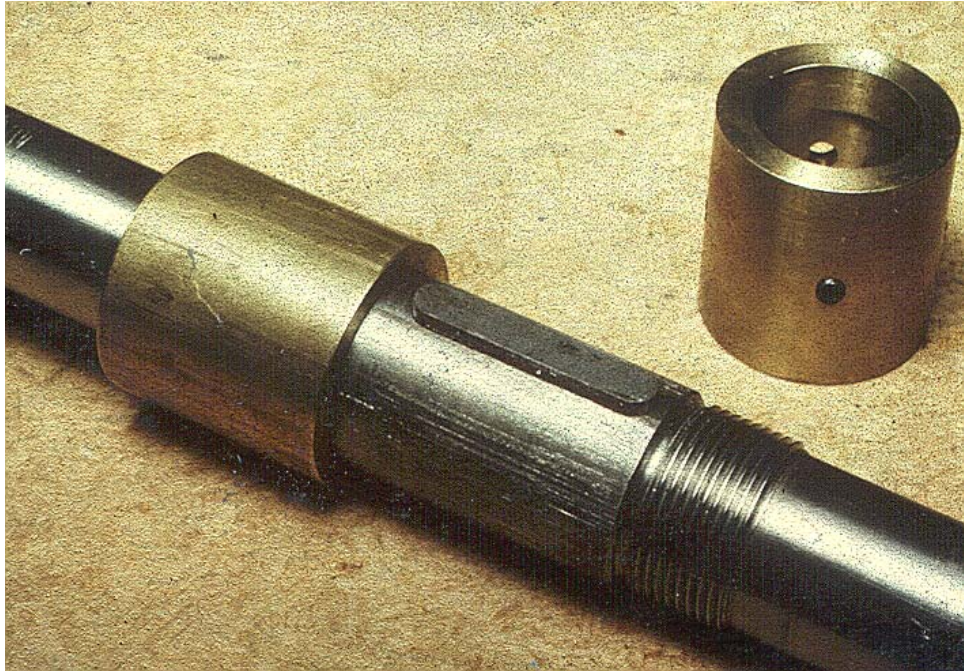
- Shut down and tag out the pump driver.
- Close and tag out the suction and discharge service valves.
 - Note Triple Duty Valve stem position.
- Close external flush lines if the pump must be drained.
- Open casing drains and vents.
- If necessary, allow the pump to cool down.



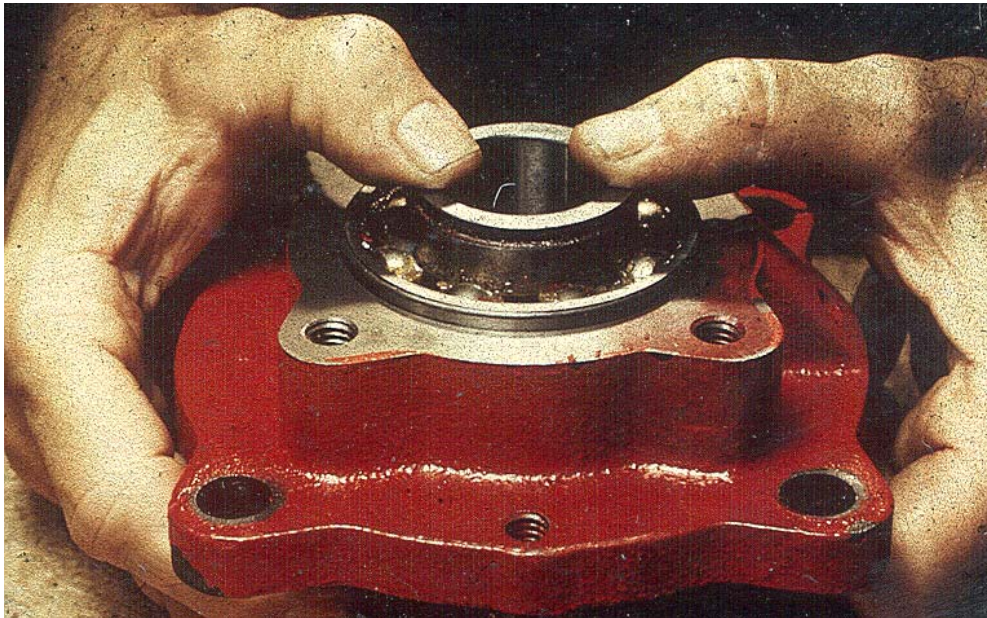












The bearing on the inboard end will hold the shaft while the outboard coverplate, seal, and bearing is installed.

