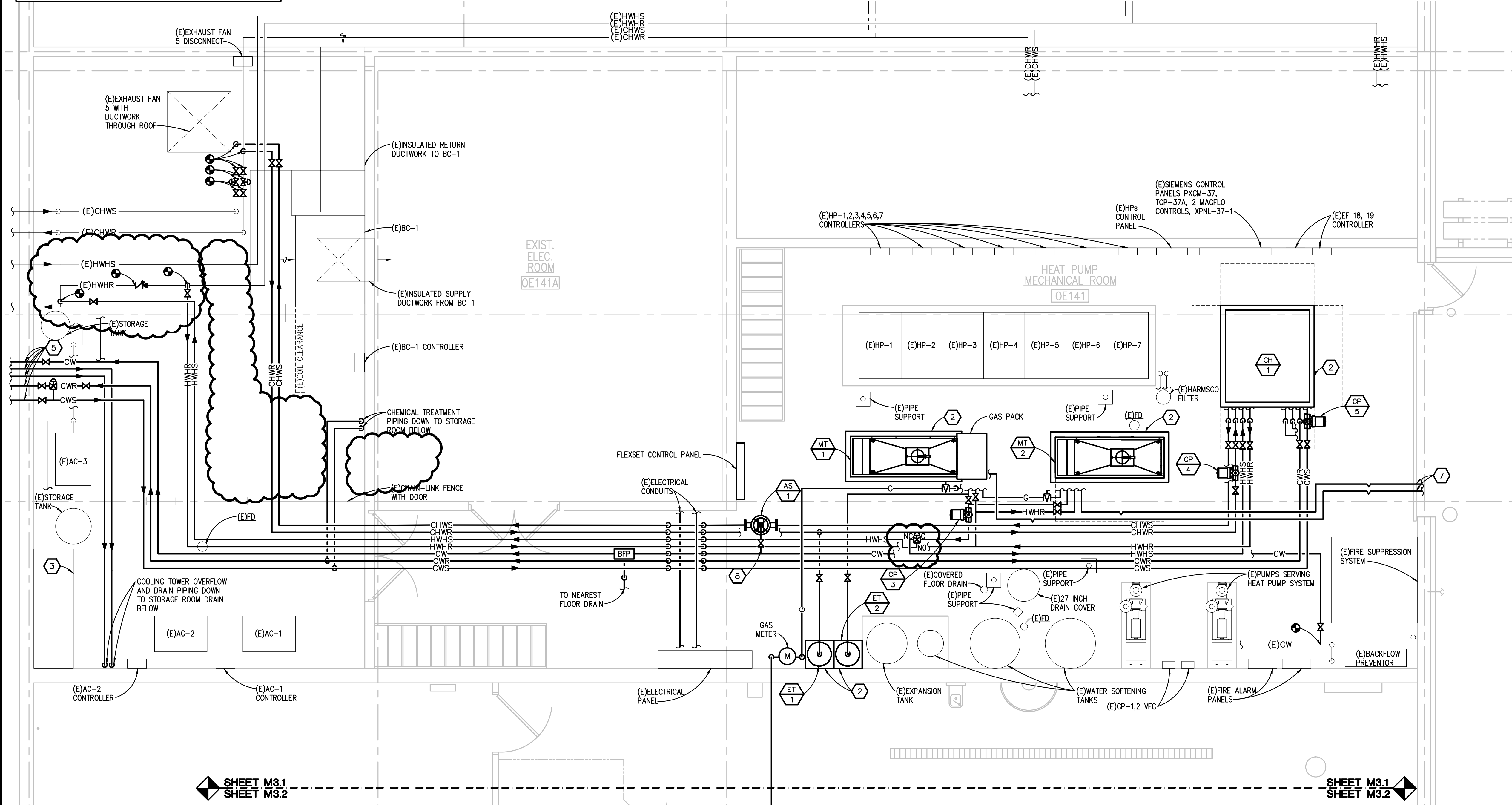
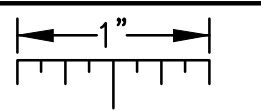
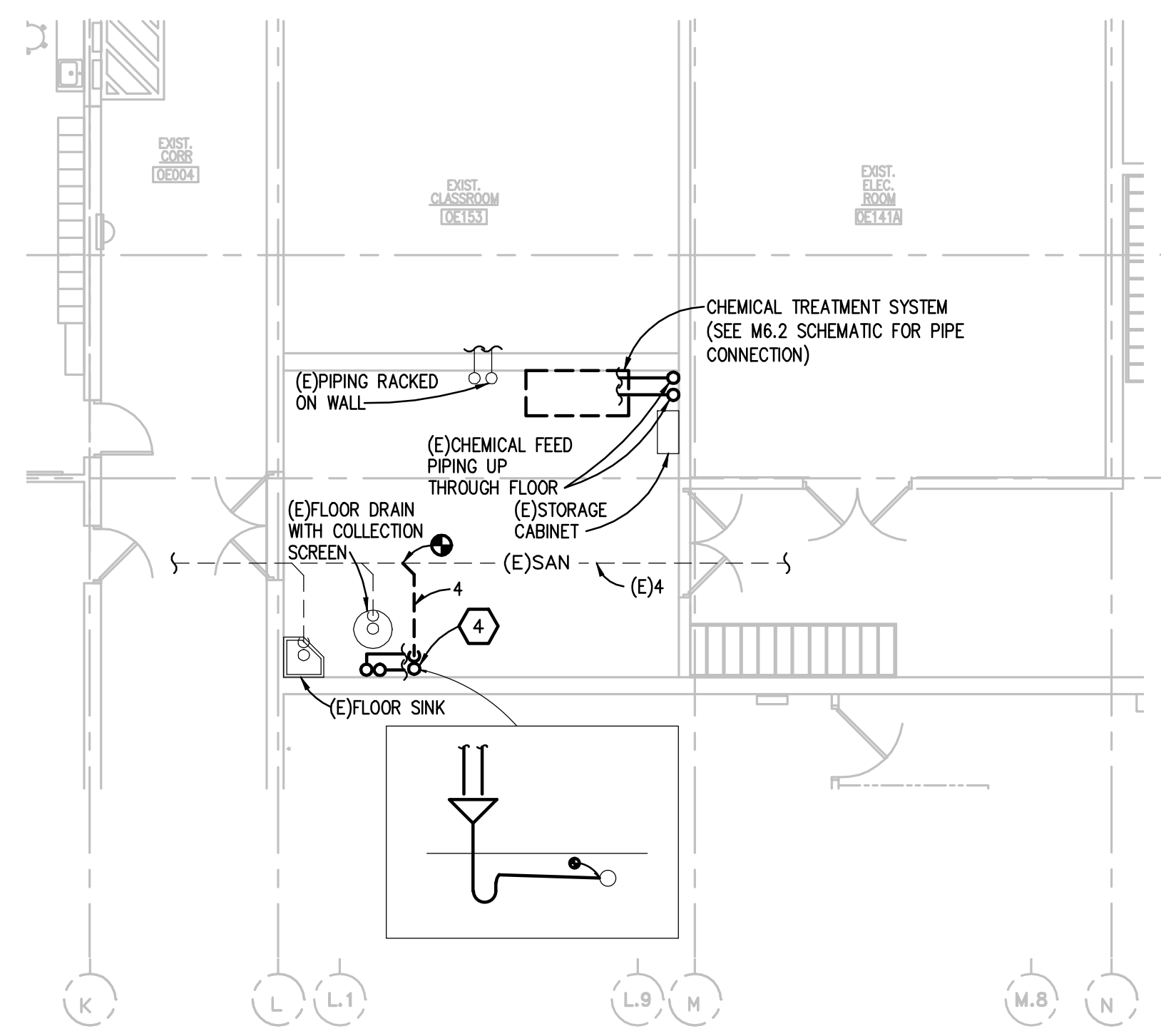


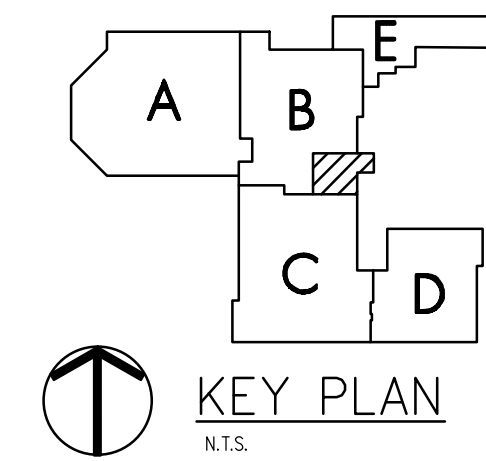
THE FOLLOWING DIMENSION EQUALS ONE INCH WHEN PRINTED TO SCALE.



FIRST LEVEL AND MEZZANINE HVAC PIPING PLAN
SCALE: 1/4" = 1' - 0"



FIRST LEVEL HVAC PIPING PLAN
SCALE: 1/8" = 1' - 0"



KEY PLAN
N.T.S.

HVAC PIPING GENERAL NOTES:

1. THESE DRAWINGS ARE DIAGRAMMATIC, AND REPRESENT THE GENERAL INTENT AND ARRANGEMENT OF SYSTEMS. THEY ARE NOT TO BE CONSIDERED FABRICATION/COORDINATION/SHOP DRAWINGS. COORDINATION WITH OTHER TRADES IS REQUIRED. PROVIDE THE ADDITIONAL FITTINGS AND OFFSETS THAT WILL BE REQUIRED TO COMPLETE EACH SYSTEM AND TO AVOID INTERFERENCES WITH ALL OTHER SYSTEMS INCLUDING THE STRUCTURE, SHEET METAL, OTHER PIPING SYSTEMS, ELECTRICAL CONDUITS, BUS DUCTS, CABLE TRAY, LIGHT FIXTURES, ETC. AND/OR OTHER SPACE CONSTRAINTS.
2. INSTALL SYSTEMS SUCH THAT REQUIRED CLEARANCE AND SERVICE ACCESS SPACE IS PROVIDED AROUND ALL MECHANICAL AND ELECTRICAL EQUIPMENT, AND AROUND ANY COMPONENTS WHICH REQUIRE SERVICE ACCESS.
3. COORDINATE AND PROVIDE ACCESS DOORS WITHIN INACCESSIBLE CEILING, SHAFT, AND CHASE AREAS FOR ALL COMPONENTS WHICH REQUIRE SERVICE ACCESS. REFER TO ARCHITECTURAL DRAWINGS FOR CEILING TYPES.
4. PROVIDE SUPPLEMENTARY STEEL AS REQUIRED FOR THE PROPER SUPPORT OF ALL SYSTEMS.
5. SUBMIT PROPOSED METHODS OF ANCHORING AND GUIDING PIPING SYSTEMS TO STRUCTURAL ENGINEER FOR APPROVAL.
6. COORDINATE LOCATION OF DUCT-MOUNTED HYDRONIC DEVICES WITH SHEET METAL TRADES.
7. BRANCH PIPING SERVING TERMINAL UNIT HEATING COILS OR RADIANT CEILING PANELS SHALL BE 3/4" UNLESS OTHERWISE NOTED. BRANCH PIPING SERVING MORE THAN ONE TERMINAL UNIT HEATING COIL SHALL BE 1" UNLESS OTHERWISE NOTED. BRANCH PIPING SERVING HOT WATER UNIT HEATERS AND CABINET UNIT HEATERS SHALL BE 1" UNLESS OTHERWISE NOTED.
8. MOUNT THERMOSTATS 48" A.F.F., UNLESS OTHERWISE NOTED. LOCATE AS CLOSE AS POSSIBLE TO DOOR WHEN INDICATED NEAR DOOR. COORDINATE EXACT LOCATION WITH ALL OTHER TRADES.

CONSTRUCTION NOTES:

1. REPLACE EXISTING REGULATOR TO PROVIDE REQUIRED NATURAL GAS AS ORIGINALLY DESIGNED FROM INCREASED NATURAL GAS PRESSURE OF 5 PSI DOWN TO 7" TO 14" W.C.
2. PROVIDE NEW 4 INCH CONCRETE HOUSEKEEPING PADS FOR ALL BASEMOUNTED PIECES OF EQUIPMENT
3. INDICATED AREA CONTAINS (E)HEAT PUMP LOOP SUPPLY AND RETURN PIPING, (E)FIRE SUPPRESSION PIPING, (E)NATURAL GAS PIPING, AND (E)ELECTRICAL CONDUIT.
4. INSTALL NEW STANDPIPE WITH A FUNNEL TOP CONNECTED TO EXISTING UNDERGROUND SANITARY PIPING. ROUTE COOLING TOWER OVERFLOW AND DRAIN TO NEW STANDPIPE. CUT THROUGH CONCRETE TO GET TO UNDERGROUND SANITARY PIPING TO MAKE NEW CONNECTION.
5. PROVIDE REQUIRED FIRE PROTECTION SHELVE FOR EACH PIPE PENETRATION THROUGH EXISTING 2 HOUR FIRE RATED WALL.
6. UTILITY PROVIDED NEW GAS METER. COORDINATE NEW GAS METER WITH REQUIRED GAS PRESSURE. GAS PRESSURE AFTER METER SHALL BE 6 PSI TO PROVIDED REQUIRED 5 PSI NATURAL GAS AT GAS PACK OF MICROTURBINES.
7. PATCH, SEAL, AND REPAIR EXTERIOR WALL AS REQUIRED TO MAKE PROPER GAS VENT ROUTING TO ATMOSPHERE.
8. LOCATE CHILLED WATER BACKFLOW PREVENTOR IN BRANCH LINE TO AIR SEPARATOR. REFER TO SCHEMATIC ON M6.3

REVISION
6/12/2014

REVISION
ADDENDUM # 2

5145 University, Suite 100
Troy, Michigan 48068-3276
Tel: 248-679-5666 Fax: 248-679-0007
www.PeterBassoAssociates.com
PBA Project No. 20740701

Peter Basso Associates Inc.
CONSULTING ENGINEERS

PROJECT TITLE
WASHTENAW COMMUNITY COLLEGE
MICROTURBINE PROJECT

SHEET TITLE
FIRST LEVEL AND
MEZZANINE HVAC PIPING
PLAN

DATE
5/12/2014
ISSUE
CONSTRUCTION
DOCUMENTS

SHEET No.

M3.1

G:\2014\2014-0101-00\Cad\2014-0101-M3-HP1.dwg, M3.1, 6/12/2014 9:21:43 AM, Justin Cosgrove, Peter Basso Associates Inc.