

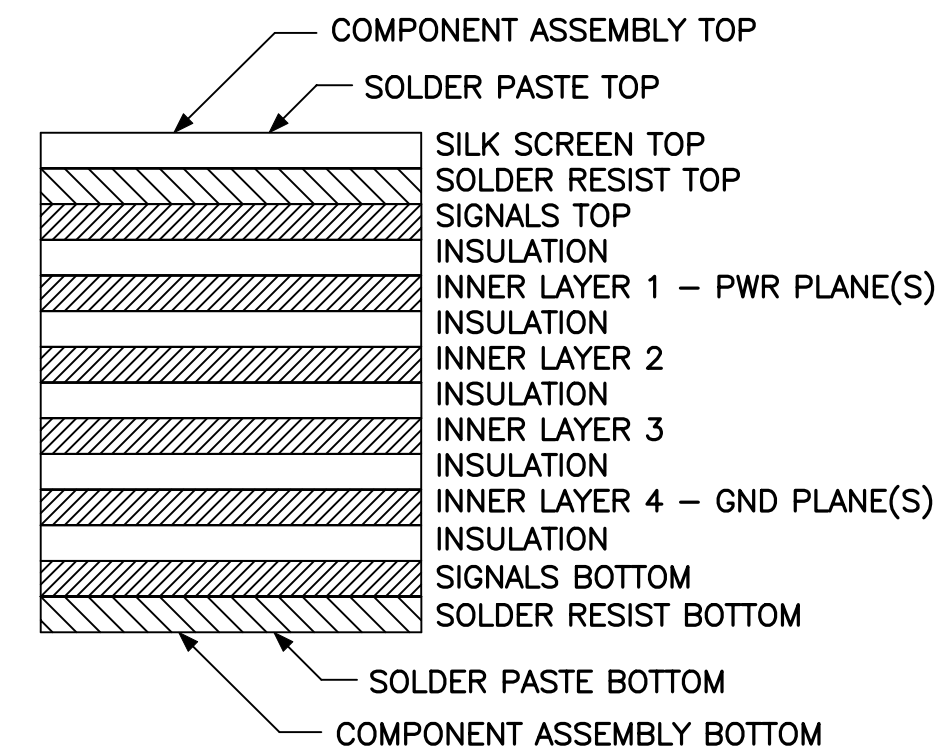
FABRICATION DRAWING

(VIEWED FROM COMPONENT SIDE)

Hole Dia (inch)	Symbol	Quantity	Plated
0.015	×	2249	Yes
0.025	Y	76	Yes
0.029	⊥	4	Yes
0.035	⊠	191	Yes
0.042	⊠	141	Yes
0.047	□	35	Yes
0.052	⊗	34	Yes
0.060	◇	122	Yes
0.082	⊠	1	No
0.096	◇	2	No
0.098	⊠	6	No
0.116	⊠	3	Yes
0.125	⊠	6	Yes
0.125	◇	10	No
0.156	◇	3	No
0.188	⊠	10	No

TOTAL: 3062

LAYER STRUCTURE



NOTES:

1. MATERIAL: 0.0625 INCH THK. 6 LAYER BOARD
PER ESG STD. E-10.
2. INFORMATION DEFINING HOLE SIZES AND LOCATIONS IS AVAILABLE
UPON REQUEST IN THE FOLLOWING FORMATS:
 - (1) X-Y COORDINATE PRINTOUT
 - (2) MAGNETIC TAPE
 - (3) MACHINE PUNCH TAPE
 - (4) ON DISKETTE IN MSDOS TEXT FORMAT
3. USE OF SOLDER MASK IS REQUIRED. SOLDER MASK SHALL
BE APPLIED OVER BARE COPPER TO COMPONENT AND SOLDER
SIDE OF THE PC BOARD.
4. APPLY SILKSCREEN TO COMPONENT SIDE USING PERMANENT WHITE
NON-CONDUCTIVE INK.
5. CURRENT BARE PRINTED CIRCUIT BOARD IS 031-02430 REV NONE.
6. SOLDER PASTE SCREEN IS REQUIRED FOR THE COMPONENT SIDE.
7. WHEN LPI MASK IS EMPLOYED, ALL 0.015 DIA. VIAS SHALL BE COVERED
WITH SOLDER MASK AND BE PLUGGED WITH EPOXY MASK ON THE
COMPONENT(TOP) SIDE BEFORE SOLDER LEVELING. SUPPLIER SHALL
MODIFY SOLDER(BOTTOM) SIDE MASK TO PROVIDE SUITABLE VIA RELIEF
OPENINGS TO AVOID PLUG VOLCANOES.
8. CLAD BOARD WITH 1 OZ./SQ. FT. COPPER (0.0014 INCH NOMINAL THICKNESS).
USE THE SAME COPPER THICKNESS ON ALL BOARD LAYERS.

YORK INTERNATIONAL CORPORATION																					
YORK, PA 17405																					
REV LEV	DATE	REVISION RECORD	CHG. NO.	DR.	CK.	REV LEV	DATE	REVISION RECORD	CHG. NO.	DR.	CK.	REV LEV	DATE	REVISION RECORD	CHG. NO.	DR.	CK.	ALL PROPRIETARY RIGHTS IN THE SUBJECT MATTER HEREOF ARE RESERVED, AND NO PERMISSION IS GRANTED TO REPRODUCE THIS PRINT IN WHOLE OR IN PART, OR DISCLOSE ANY OF THE INFORMATION UPON IT TO OTHERS WITHOUT WRITTEN RELEASE BY YORK INTERNATIONAL CORPORATION	DIMENSIONS ARE IN INCHES DO NOT SCALE TOLERANCES PER ENG. STD. M-282 WELDING PER ENG. STD. M-30 REF. DWG.	CONTROL, OPTIVIEW MICROPROCESSOR BOARD (REF. DWG.)	MATERIAL PART NO. _____ ENG. STD. E-355 TYPE _____ CUT SIZE _____
—		NEW.	NOT REL'D		KAW BAS																
A	04/03/83	SEE OTHER SHEETS.	0782-0007		KAW BAS																
B	10/17/83	SEE SHEET 7.	0703-3024		KAW BAS																
												NAME DATE DR. K. WERTMAN 05-15-02 APPR. B. SMITH 06-15-02 SCALE: N.T.S.	SIZE D	CAGE NO 66935	DRAWING NUMBER 031-02430-999						
												WT. =	LBS.	ORIG. NO.	9 OF 9						