

NOTES:  
 -ALL REFERENCES TO LEFT & RIGHT SIDE OF PANELS ARE FACING THE PANEL FROM THE FRONT  
 -RFX 12 THRU 50 UNITS USE THE BACK MOUNTING FLANGES TO MOUNT ENCLOSURE. PLUG TWO BOTTOM MOUNTING HOLES AT UNIT ASSEMBLY

APPROXIMATE WEIGHT OF THIS ASSEMBLED ENCLOSURE IS 75 POUNDS

THIS DRAWING AND THE SUBJECT MATTER IT CONTAINS, ARE PROPERTY OF FRICK INC. AND ARE NOT TO BE REPRODUCED OR COPIED FOR DISTRIBUTION BEYOND THE REQUIREMENTS OF THE PROJECT REFERENCED ON THIS DRAWING.  
 © COPYRIGHT 10/29/10, FRICK/ICI, ALL RIGHTS RESERVED

**Johnson Controls**  
 100 01 AVE  
 Mapleton, PA 17238

REV	ECN	DATE	DR	APP	DESCRIPTION

NOTICE TO PURCHASER  
 REFER TO CONTRACT FOR MATERIAL TO BE SUPPLIED BY YORK/ICI. THE ADDRESS FOR SUCH MATERIAL IS THE ADDRESS LISTED BY MAILING SHOWING UPON THIS DRAWING.

PURCHASER: \_\_\_\_\_  
 YORK ORD NO: \_\_\_\_\_  
 PURCH ORD NO: \_\_\_\_\_

**CONTROL PANEL ASSEMBLY**  
**QUANTUM 5 LX, NON-HAZARDOUS**  
 22 x 18 x 10

**OUTSIDE FRONT OF CNTL PANEL**

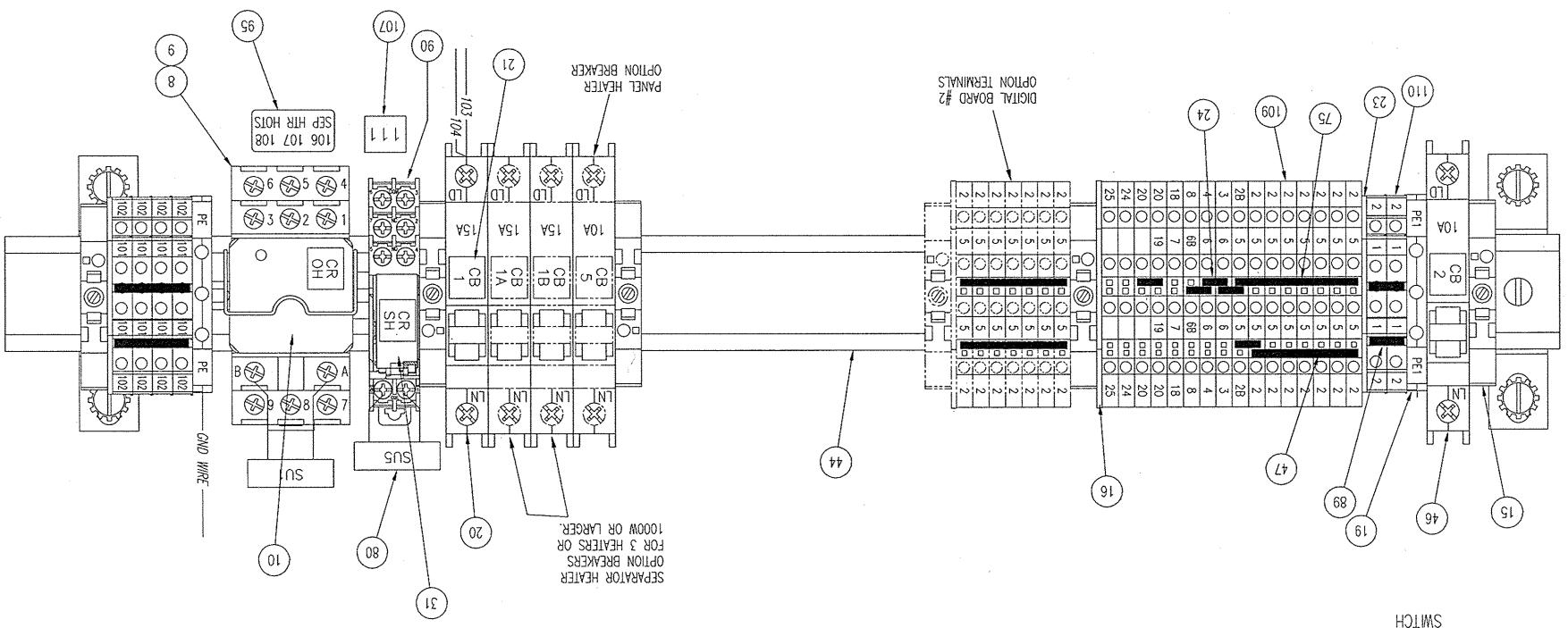
UNLESS OTHERWISE SPECIFIED DIMENSIONS ARE IN INCHES DO NOT SCALE.  
 UNLESS OTHERWISE SPECIFIED TOLERANCES PER ASME Y14.5

REV	DATE	BY	CHK	APP'D	SCALE
01	10/29/10	B. HESS	H. NIKELL	J. LONG	AS IS

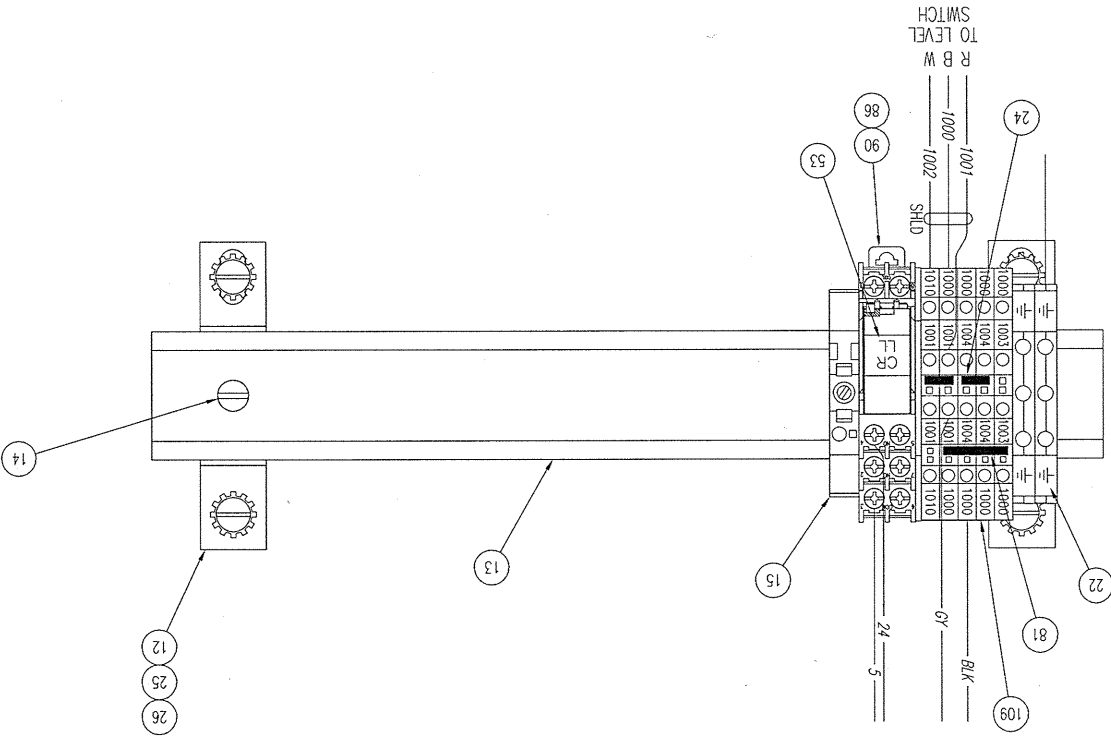
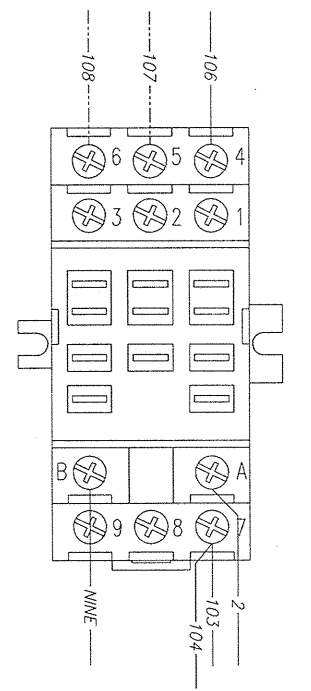
DR: B. HESS  
 CHK: H. NIKELL  
 APP'D: J. LONG

SHEET 01 OF 05  
 DWG NO: 649D5856  
 CASE CODE: D 23587

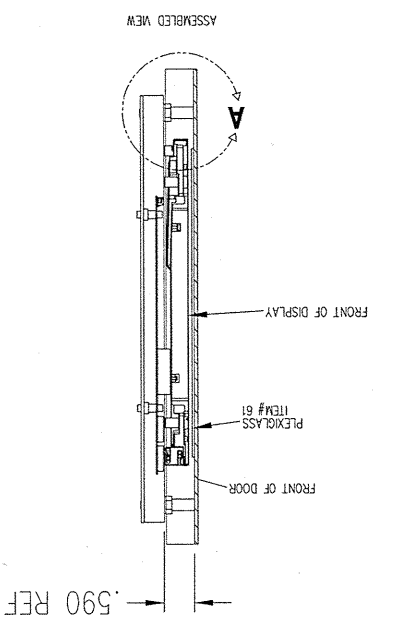
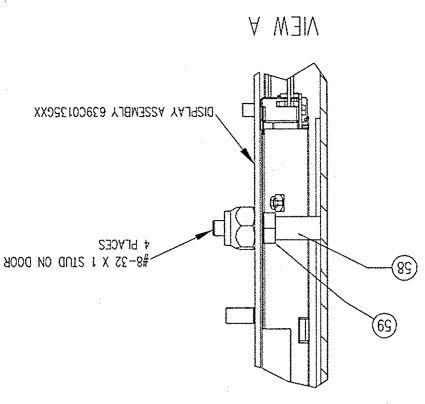
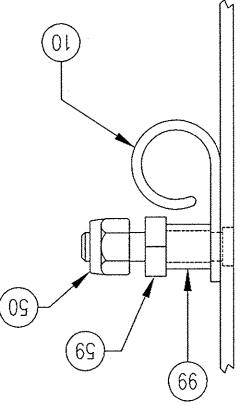




STANDARD WIRING OF "CRSH"  
 FOR WIRING TO 2-1000W HTRS  
 UNLESS OTHERWISE SPECIFIED  
 DIMENSIONS ARE IN INCHES  
 DO NOT SCALE



DETAIL OF HARDWARE  
 MOUNTING ON SIDE WALLS



.590 REF

DR	B. HESS	1/10/10	1/10/10
CHK	H. KOWAL	1/10/10	1/10/10
APP	J. LONG	1/10/10	1/10/10
CODE			

TITLE	CONTROL PANEL ASSEMBLY QUANTUM 5 LX, NON-HAZARDOUS 22 x 18 x 10
COMPONENT DETAILS & ENLARGEMENTS	
SCALE	1:1 & NOTED

PURCHASER	
YORK ORD NO	
PURCH ORD NO	

NOTICE TO PURCHASER  
 REFER TO CONTRACT FOR MATERIAL  
 TO BE SUPPLIED BY JOY/JOHNSON  
 THE MANUFACTURED BY ANYTHING  
 SHOWN UPON THIS DRAWING.

THIS DRAWING AND THE SUBJECT MATTER IT CONTAINS, ARE PROPERTY OF JOY/JOHNSON. NO PART OF THIS DRAWING, BEYOND THE REQUIREMENTS OF THE PROJECT REFERENCED ON THIS DRAWING, IS TO BE REPRODUCED OR TRANSMITTED IN ANY FORM OR BY ANY MEANS, ELECTRONIC OR MECHANICAL, INCLUDING PHOTOCOPYING, RECORDING, OR BY ANY INFORMATION STORAGE AND RETRIEVAL SYSTEM, WITHOUT PERMISSION IN WRITING FROM JOY/JOHNSON.

© COPYRIGHT 10/29/10, JOY/JOHNSON. ALL RIGHTS RESERVED.

**Johnson Controls**  
**YORK Process Systems**  
 100 JOY DRIVE  
 YORK, PA 17404



ITEM	QTY	SAP #	LEGACY #	VENDOR PART NUMBER	DESC
1	1	483963	639A0185H10	800FP-SM22	SELECTOR SWITCH - 2 POSITION MAINTAINED
2	1	485341	649A0274H01	649A0274H01	NAMEPLATE CONTROL POWER OFF ON
3	1	485235	649A0179H01	649A0179H01	NAMEPLATE WARNING OPEN ALL REMOTE DISCONNECTS BEFORE SERVICING
4	1	485880	649A1031H01	649A1031H01	LABEL PHD VIBRATION MONITORING
5	1	486001	649A1074G01	649A1074G01	LABEL CAUTION FOR CONTROL PANELS
6	1	484621	640D0186H01	640D0186H01	KEYPAD QLX FRICK
7	3	476713	522M0295H01	522M0295H01	SCREW, #8-32 X 5/16 G
8	1	580348	639B0114H51	GPRA-SB11G1	RELAY SOCKET, DPDT & 3PDT
9	1	580349	639B0114H98	GPRA-RC1	SPRING CLIP HOLD DOWN
10	1			GPRS-B*	OIL HEATER CONTROL RELAY, BOM WILL CALL OUT CORRECT VOLTAGE COIL
11	8	454971	111Q0110548	111Q0110548	SCREW RHMS 1/4 NC X 1/2 SS
12	4	484112	639A0222H89	1286600000	MOUNTIN BRACKET,TST-M5 #1286600000
13	1	484332	639B0087H02	WA2169	DINRAIL, 10.25" PRECUT
14	4	484111	639A0222H88	0295900000	SCREW, M5,5 X 8 MM #0295900000
15	8	467022	333Q0001187	1061200000	END BRACKET - WEW 35/2
16	2	467100	333Q0001424	1059100000	WAP WDK2.5 END PLATE/PARTITION
17	2	483923	639A0175H14	1762620000	TERMINAL JUMPER ,4PL,6MM,#1762620000
18	9	467259	333Q0001878	0514500000	DINRAIL
19	4	467020	333Q0001185	1010100000	TERM BLK GROUND WPE 4
20	1	484053	639A0206H15	QL18KM15	CIRCUIT BRK,15A,WD #9926251015
21	2	484137	639A0227G04	639A0227G04	LABEL CB
22	78	467114	333Q0001456	1640740000	TERMINAL MARKER, W5/5 SIZE
23	2	565356	639A0191H30	1084000000	WAP WDK2.5/4N END PLATE/PARTITION
24	7	483912	639A0175H02	1693800000	TERMINAL JUMPER ,2PL,5MM,#1693800000
25	16	467064	333Q0001303	333Q0001303	WASHER, 1/4, SHAKEPROOF, EXT
26	12	467030	333Q0001199	333Q0001199	STAND-OFF NYLATCH
27	1	486313	649D5087H99	649D5087H99	BACKPLATE, STEEL
28	8	467245	333Q0001799	333Q0001799	RIVET,DUCT PANEL
29	1	670709	640D0193H01	640D0193H01	ANALOG BOARD, 32 CHANNEL, 12VDC INPUT
30	1	485874	649A1027G11	WA2884J	ANALOG BD CONN KIT CHNLS 1-16
31	1			RJ2S-CL*	SPACE HEATER CONTROL RELAY, BOM WILL CALL OUT CORRECT VOLTAGE COIL
32	1	670741	639B0117H01	639B0117H01	CABLE ASSY, CPU TO LVDS DISPLAY 10.4
33	1	486157	649B0903H02	1527160000	9 POLE CONNECTOR
34	1	552141	639B0104H01	639B0104H01	HARNESS ASSY, INVERTER DUAL BULB
35	1	484557	640D0062H01	640D0062H01	DIGITAL BOARD
36	17	466851	333Q0000212	333Q0000212	SCREW PHSS 6-32 X 1/2 G
37	2	455598	111Q0940174	111Q0940174	WASHER LOCKING # 6 SS
38	2	467032	333Q0001201	RAF-4544-632-S	STAND-OFF #6 X 1 1/8
39	1	694589	639D0193H01	639D0193H01	HARNESS, DC POWER & COMM DISTR ASSY
40	1	643461	649A1027G31	WA2888J	ANALOG BD CONN KIT POWER/COMM TOP OF BD
41	1	643460	649A1027G21	WA2886J	ANALOG BD CONN KIT CHNLS 17-32
42	11	455056	111Q0281061	OACM-5	MODULE OUTPUT 240 VAC
43	1	484452	640A0055G01	640A0055G01	LABEL FIELD WIRING NOTICE
44	1	484333	639B0087H03	WA2600	DINRAIL, 18.75" PRECUT
45	3	467063	333Q0001302	333Q0001302	WASHER,#8 SHAKEPROOF,EXT,ZINC
46	1	484050	639A0206H10	QL18KM10	CIRCUIT BRK,10A,WD #9926251010
47	1	483917	639A0175H07	1693850000	TERMINAL JUMPER ,7PL,5MM,#1693850000
48	1	642307	639B0115H01	8754960000	POWER SUPPLY BRICK
49	1	484443	640A0036H01	640A0036H01	MODULE I/O HOLD DOWN
50	2	455411	111Q0740699	111Q0740699	SCREW PHSS 4-40 X 3/8 SS
51	1	642308	639B0115H02	8754970000	POWER SUPPLY BRICK
52	1	642309	639B0115H03	8739140000	POWER SUPPLY BRICK
53	3	484134	639A0227G01	639A0227G01	LABEL CR
54					
55	1	484337	639B0088H02	TA2157	1" x 3" WIREWAY, PRECUT 10.00"
56	1	484336	639B0088H01	TA2158	1" x 3" WIREWAY, PRECUT 18.00"
57	1			649D5087H*	BOM WILL CALL OUT CORRECT ENCLOSURE TYPE
58	21	467058	333Q0001296	333Q0001296	NUT,LOCK,#8-32 ESNA, ZINC
59	1	485582	649A0937H02	MB3A10M4	TY WRAP BASE
60	4	485353	649A0284H01	649A0284H01	SPACER #8 ROUND NYLON X 1/2 LG
61	1	569676	640A0032H02	640A0032H02	DISPLAY PLEXIGLASS FILL PIECE
62	1	484379	639C0132H01	LQ104V1DG61	DISPLAY, STANDARD
63	1	686440	639C0141G01	639C0141G01	MICROPROCESSOR, ADVANTECH Q5
64	1	484329	639A0261H01	CXA-0454	INVERTER, TWO BULB APPLICATION
65	1	484439	640A0034H01	640A0034H01	LABEL cUL & ULus COMBINED PER E142909
66	1	485997	649A1066G01	649A1066G01	LABEL FUSE AND TORQUE VALUES QUANTUM
67	2	484446	640A0045G01	640A0045G01	LABEL EARTH GROUND SYMBOL
68	1	664673	639B0119H01	639B0119H01	MOUNTING PLATE, POWER SUPPLY, QTM 5
69	1	548266	639A0278H01	639A0278H01	ADAPTER BOARD,LVDS TO VGA,QTM 5 CONTRLR
70	1	670593	639C0143H01	639C0143H01	MOUNTING PLATE, DISPLAY, ADVANTECH

ITEM	QTY	SAP #	LEGACY #	VENDOR PART NUMBER	DESC
71	16	467222	333Q0001736	333Q0001736	NUT HEX #8-32 X 11/32
72					
73	4	455256	111Q0540007	111Q0540007	NUT HEX 1/4 NC G
74	1	677556	639B0116H01	639B0116H01	BD, INTERFACE, KEYPAD/COMMS TO CPU
75	1	483918	639A0175H08	1693860000	TERMINAL JUMPER ,8PL,5MM,#1693860000
76	30	485566	649A0924H29	T18-18	TIE WRAP
77	1	467071	333Q0001316	45-3-9515	ENVELOPE
78	1	484466	640B0018G01	640B0018G01	LABEL UL RATING ECS CHECKOUT W/ UL#
79	1			649A0945G*	BOM WILL CALL OUT CORRECT VOLTAGE LABEL
80	2	455040	111Q0280958	RC1313EFR-N	SUPPRESSOR #RC1313EFR-N-.1-6-20
81	1	483914	639A0175H04	1693820000	TERMINAL JUMPER ,4PL,5MM,#1693820000
82	1	483966	639A0185H30	800F-ALP	MOUNTING LATCH 800F SERIES
84	1	515434	639A0266H01	CPM87S	CONTROL PANEL MOUNT 22MM
85	1	467096	333Q0001418	5VR1	EMI FILTER
86	1			RJ2S-CLD-*	OIL LEVEL CONTROL RELAY, BOM WILL CALL OUT CORRECT VOLTAGE COIL
87	1	485407	649A0879H01	649A0879H01	FLASHCARD
88	8				BOM WILL CALL OUT CORRECT VOLTAGE INPUT MODULES
89	2	483921	639A0175H12	1758250000	TERMINAL JUMPER ,2PL,6MM,#1758250000
90	2			SJ2S-07L	SOCKET, DIN RAIL
91	1	521599	639A0270H01	STC-150	STEEL TENSION CLAMP
92	4	483998	639A0192H01	3833	SEAL, KNOCK-OUT
93	1	467024	333Q0001191	701DN001048150D100230A	HOUR METER
94	1	694590	639D0195H01	639D0195H01	HARNESS, AC POWER & DIGITAL BD #1
95	1	517770	639A0269G03	639A0269G03	LABEL, SEP HEATER HOTS
96	1	696514	639D0191H02	639D0191H02	HARNESS KIT, CPU TO INTERFACE BD
97	1	467094	333Q0001416	1635	TUBING, FLEX, SPLIT
98	1	467095	333Q0001417	1637A	TUBING, FLEX, SPLIT
99	12	467221	333Q0001735	333Q0001735	SPACER #8 RD NYLON X 1/4 LG
101					
102	1			649A0945G*	BOM WILL CALL OUT CORRECT VOLTAGE LABEL
103	4	467189	333Q0001656	333Q0001656	NUT,LOCK,#6-32,K,ZINC,1/4 HEX
107	1	517785	639A0227G08	639A0227G08	LABEL SPACE HEATER HOT
108	1	485873	649A1027G10	649A1027G10	LABEL CPU COMMS & BATTERY
109	21	483996	639A0191H01	1041100000	STANDARD DESIGN TERMINAL BLOCK - WDK 2.5 (W/ ZQV JUMPERS)
110	6	565355	639A0191H20	1041900000	COMPACT DESIGN TERMINAL BLOCK - WDK 4N

THIS DRAWING AND THE SUBJECT MATTER IT CONTAINS ARE PROPERTY OF FRICK AND SHOULD NOT BE COPIED, REPRODUCED, OR DISTRIBUTED BEYOND THE REQUIREMENTS OF THE PROJECT REFERENCED ON THIS DRAWING.

© COPYRIGHT 10/29/10, FRICK/JCI, ALL RIGHTS RESERVED

**Johnson Controls**  
BY JOHNSON CONTROLS

NO. OF SHEETS: 17/288

NOTICE TO PURCHASER: REFER TO CONTRACT FOR MATERIAL TO BE SPECIFIED BY WORK/ACT. THE PRICE OF THIS DRAWING IS NOT INCREASED BY ANYTHING SHOWN UPON THIS DRAWING.

PURCHASER: \_\_\_\_\_

YORK ORD NO: \_\_\_\_\_

REV: \* \_\_\_\_\_

DATE CODE: 23587

SIZE: D

SCALE: \_\_\_\_\_

SHEET 05 OF 05

649D5856

CONTROL PANEL ASSEMBLY  
QUANTUM 5 LX, NON-HAZARDOUS  
22 x 18 x 10

UNLESS OTHERWISE SPECIFIED DIMENSIONS ARE IN INCHES DO NOT SCALE

UNLESS OTHERWISE SPECIFIED TOLERANCES PER ASME Y14.5

DEC 24 10/29/10  
DEC 24 11/02/10  
DEC 24 11/02/10

DR: B. HESS  
CHK: H. HOWELL  
APPD: J. LONG