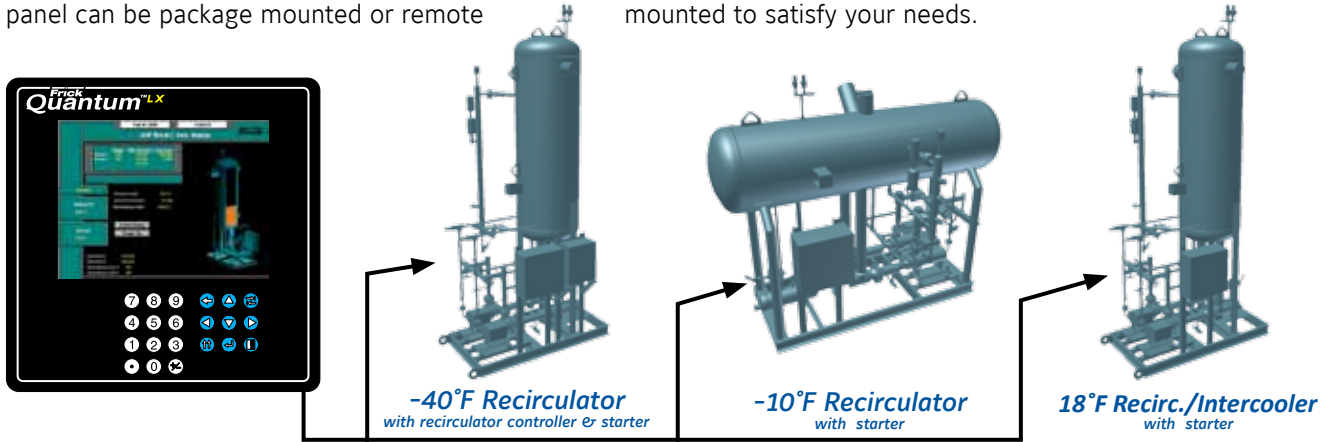


Quantum™ LX Recir-Q-lator™ Control Advantage



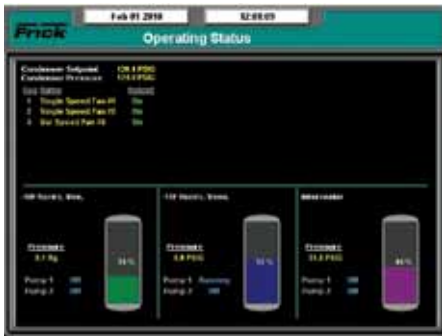
The Quantum™ LX *Recir-Q-lator*™ Panel provides easy connectivity of your vessel operations to the rest of your industrial refrigeration system. Simplistic setup along with on-screen graphics, control logic, and historical trending provide you with the **best** vessel control value available in the industry!

3 x 2 Control – The standard Quantum™ LX *Recir-Q-lator*™ control panel provides level, safety and pump control for up to 3 recirculator packages with 2 pumps per package (3rd & 4th pump control optional). The *Recir-Q-lator*™ panel can be package mounted or remote mounted to satisfy your needs.



The **Vessel Overview Screen** of the *Recir-Q-lator*™ panel provides a quick reference to the basic operation of all vessels on one screen, while the individual **Vessel Status Screen** provides more detailed information along with control, based on current operator session.

Vessel Overview Screen



Vessel Status Screen



The Control Advantages of the Quantum™ LX *Recir-Q-lator*™ panel, over some more traditional vessel controllers are numerous. Among these are.....

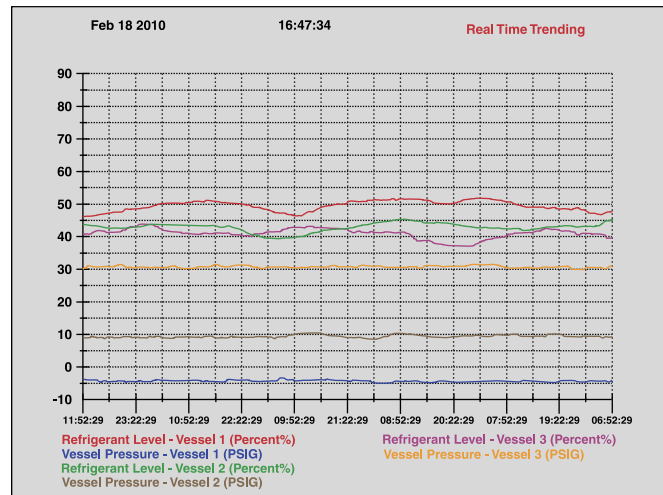
1. One controller for 3 recirculator packages with 2 pumps per package (3rd & 4th pump control optional)
2. Auto pump transition based on run hours
3. Auto pump bypass based on operating pressure differential (maintains minimum pump flow requirements)
4. Pump Cavitation Protection based on pump inlet and outlet pressure differential
5. Dual-Feed liquid level control with separate setpoints
6. Both solenoid (digital) and motorized valve (analog) level control capable
7. Individual ammonia detection for each vessel
8. Connectivity to the rest of the system via serial or ethernet communications, with remote access via web browser
9. 3 levels of security/operator sessions
10. Real Time and historical trending

The Hardware Advantage – The Quantum™ LX *Recir-Q-lator*™ panel utilizes the same hardware used in all other Quantum™ LX applications. This advantage means commonality in parts as well as service. The result is a reduction in both your inventory and operator training requirements.

Quantum™LX Recir-Q-lator™ Control Advantage

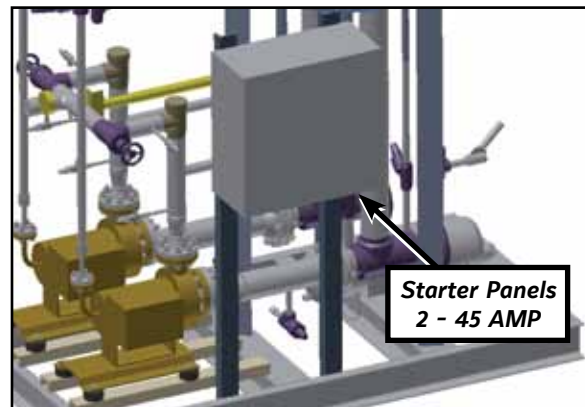
Vessel Level Control Setpoints – The *Recir-Q-Lator™* panel setup is easy to use. Control the level by solenoid or motorized valve or both. The Proportional and integral control provided by the *Recir-Q-Lator™* means smooth level control and operation.

Real Time and Historical Trending – The Quantum™LX *Recir-Q-Lator™* panel also provides both data logging and graphical display for both Real-Time and Historical trending. No other vessel controller in the industry provides this information and as much detail or volume.



Vessel Pump Control Setpoints – Include Pump Cavitation Protection, Auto Pump Bypass, Auto-Pump Switching (by run hours), High Pump Pressure Safety, and Run Hours Reset, just to name a few...

The Total Package – Frick® by Johnson Controls also provides the starters for your vessels. This means that all aspects of your new vessel will be completely engineered and manufactured by the same company. When all components are package mounted, your electrical installations costs are reduced and your new vessel package is essentially "Plug & Play".



Form 090.000-ADV07 (2011-06)
Supersedes: 090.220-ADV (2011-06)
Subject to change without notice
Printed in USA · 1211 PDF

© 2011 Johnson Controls, Inc. ALL RIGHTS RESERVED



JOHNSON CONTROLS
100 CV Avenue
Waynesboro, PA 17268 USA
Phone: 717-762-2121 • Fax: 717-762-8624
www.johnsoncontrols.com/frick