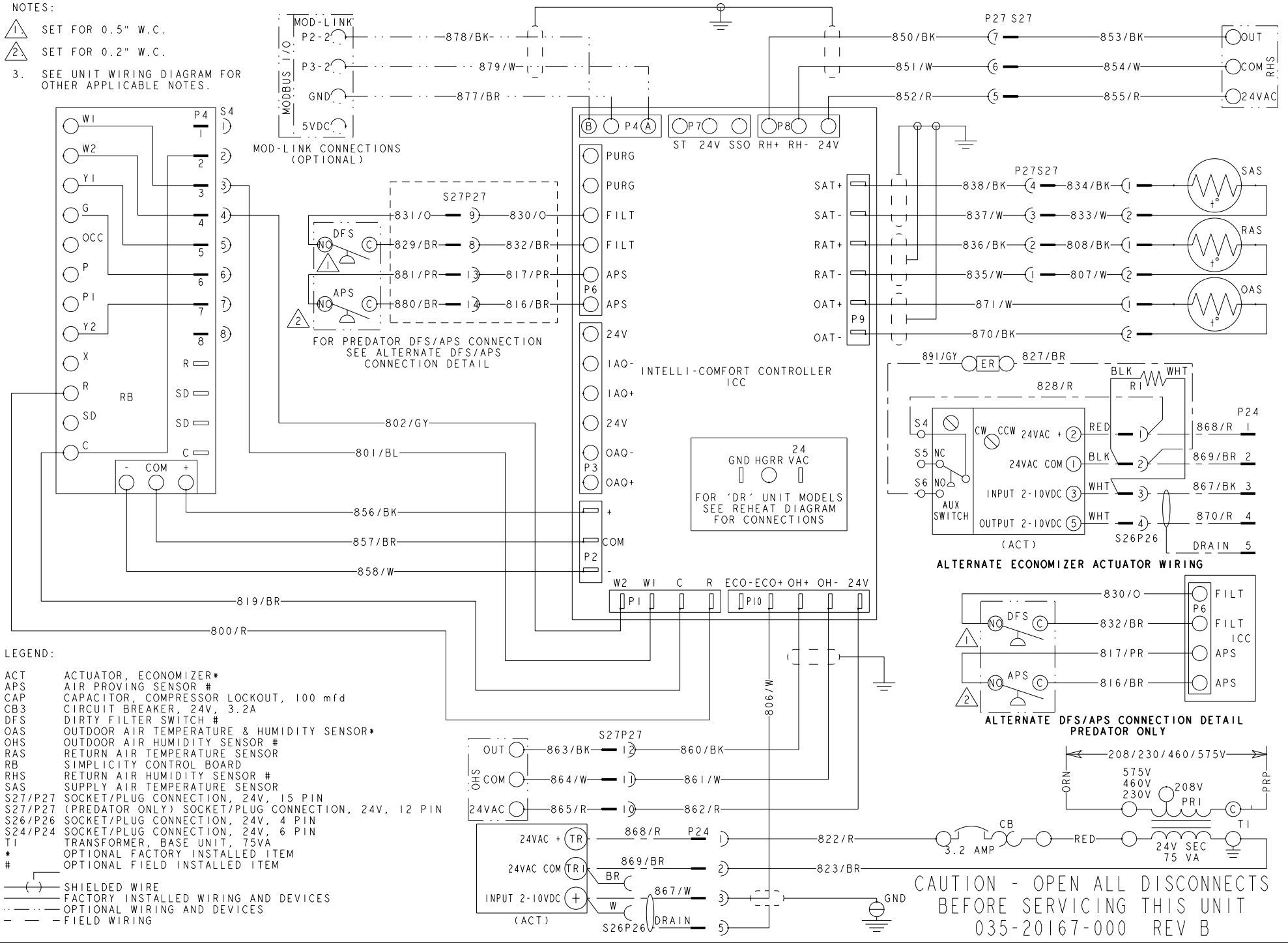


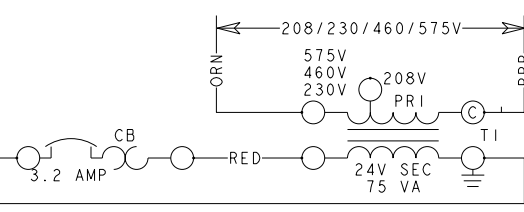
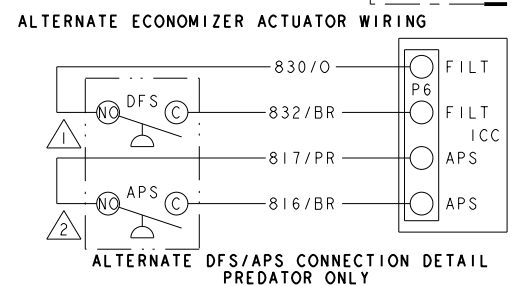
# BAS CONTROLS SYSTEM INTELLI-COMFORT

# ELEMENTARY

- NOTES:
- 1. SET FOR 0.5" W.C.
  - 2. SET FOR 0.2" W.C.
  - 3. SEE UNIT WIRING DIAGRAM FOR OTHER APPLICABLE NOTES.



- LEGEND:
- ACT ACTUATOR, ECONOMIZER\*
  - APS AIR PROVING SENSOR #
  - CAP CAPACITOR, COMPRESSOR LOCKOUT, 100 mfd
  - CB3 CIRCUIT BREAKER, 24V, 3.2A
  - DFS DIRTY FILTER SWITCH #
  - OAS OUTDOOR AIR TEMPERATURE & HUMIDITY SENSOR\*
  - OHS OUTDOOR AIR HUMIDITY SENSOR #
  - RAS RETURN AIR TEMPERATURE SENSOR
  - RB SIMPLICITY CONTROL BOARD
  - RHS RETURN AIR HUMIDITY SENSOR #
  - SAS SUPPLY AIR TEMPERATURE SENSOR
  - S27/P27 SOCKET/PLUG CONNECTION, 24V, 15 PIN
  - S27/P27 (PREDATOR ONLY) SOCKET/PLUG CONNECTION, 24V, 12 PIN
  - S26/P26 SOCKET/PLUG CONNECTION, 24V, 4 PIN
  - S24/P24 SOCKET/PLUG CONNECTION, 24V, 6 PIN
  - T1 TRANSFORMER, BASE UNIT, 75VA
  - \* OPTIONAL FACTORY INSTALLED ITEM
  - # OPTIONAL FIELD INSTALLED ITEM
  - (---) SHIELDED WIRE
  - (---) FACTORY INSTALLED WIRING AND DEVICES
  - (---) OPTIONAL WIRING AND DEVICES
  - (---) FIELD WIRING



CAUTION - OPEN ALL DISCONNECTS BEFORE SERVICING THIS UNIT  
035-20167-000 REV B