



**PACKAGED ROOFTOP
AIR CONDITIONING UNITS**

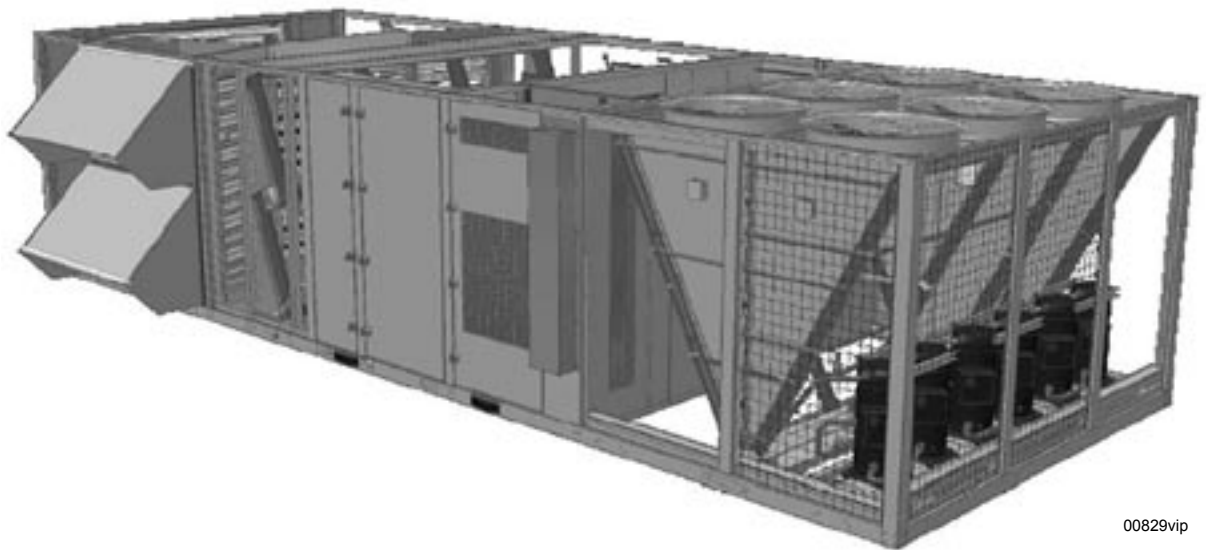
WIRING DIAGRAMS

New Release

Form 100.50-W2 (1005)

eco²

**106-130 TONS
MOD E**



00829vip

CHANGEABILITY OF THIS DOCUMENT

In complying with YORK's policy for continuous product improvement, the information contained in this document is subject to change without notice. While YORK makes no commitment to update or provide current information automatically to the manual owner, that information, if applicable, can be obtained by contacting the nearest YORK ES office.

It is the responsibility of operating/service personnel to verify the applicability of these documents to the equipment in question. If there is any question in the mind of operating/service personnel as to the applicability of these documents, then prior to working on the equipment, they should verify with the owner whether the equipment has been modified and if current literature is available.

INTRODUCTION

This manual contains the wiring diagrams for the YPAL 106 to 130 ton Mod D products and is intended to be used in conjunction with the unit IOM, Form 100.50-NOM4. In accordance with the statement above, the labels on the unit take precedence over these diagrams.

LIST OF FIGURES

FIG. 1 – CONTROL PANEL 106-130 TON	5
FIG. 2 – POWER SIDE - 106-130 TON VAV W/ SINGLE POINT POWER	10
FIG. 3 – POWERSIDE - 106-130 TON SINGLE POINT POWER W RETURN FAN	11
FIG. 4 – POWER SIDE - 106-130 TON VAV W/ DUAL POINT POWER.....	12
FIG. 5 – POWER SIDE - 106-130 TON DUAL POINT POWER W/ RETURN FAN	13
FIG. 6 – POWER SIDE - 106-130 TON CV W/SINGLE POINT POWER	14
FIG. 7 – POWER SIDE - 106-130 TON CV W/DUAL POINT POWER	15
FIG. 8 – MODULATING GAS HEAT CONTROLS	16
FIG. 9 – STAGED GAS HEAT CONTROLS 70-130 TON.....	17
FIG. 10 – ELECTRIC HEAT 2 FUSE - 2 STAGE	18
FIG. 11 – ELECTRIC HEAT 2 FUSE - 4 STAGE	19
FIG. 12 – ELECTRIC HEAT 3 FUSE - 3 STAGE	20
FIG. 13 – ELECTRIC HEAT 3 FUSE - 5 STAGE	21
FIG. 14 – ELECTRIC HEAT 3 FUSE - 6 STAGE	22
FIG. 15 – ELECTRIC HEAT 4 FUSE - 4 STAGE	23
FIG. 16 – ELECTRIC HEAT 5 FUSE - 5 STAGE	24
FIG. 17 – ELECTRIC HEAT 6 FUSE - 6 STAGE	25
FIG. 18 – ELECTRIC HEAT 6 FUSE - 6 STAGE	26

THIS PAGE INTENTIONALLY LEFT BLANK

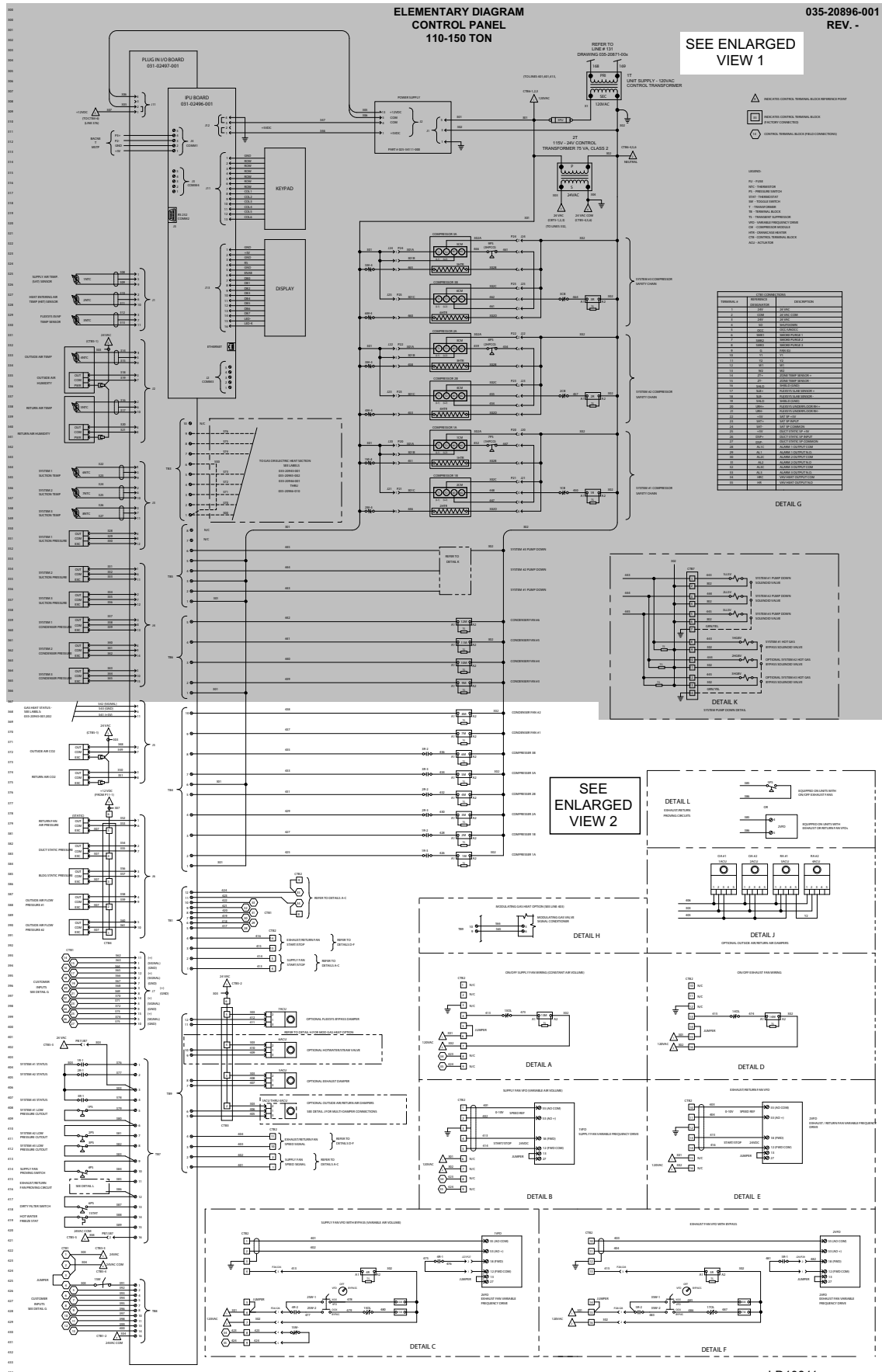


FIG. 1 - CONTROL PANEL 106-130 TON

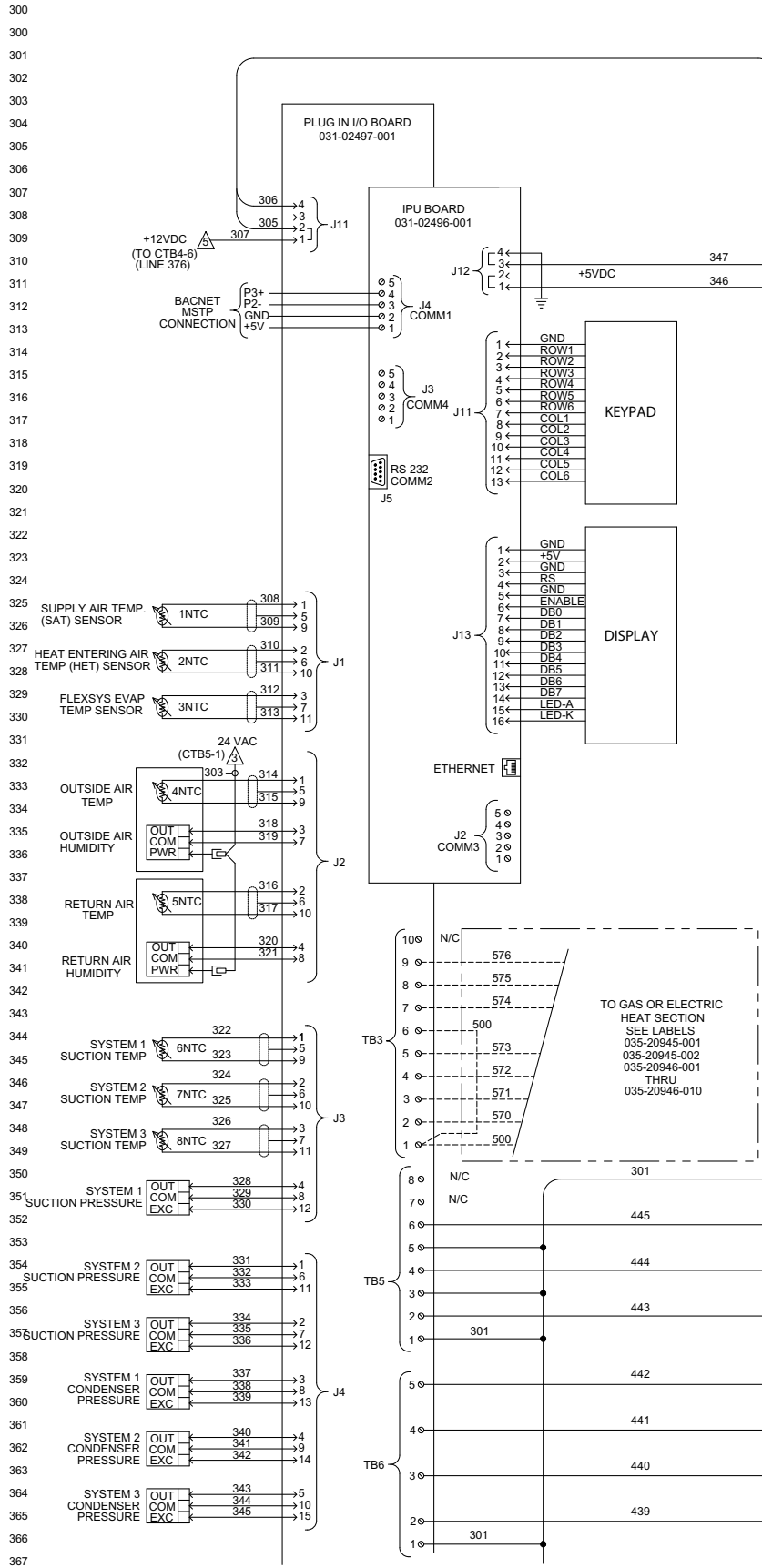
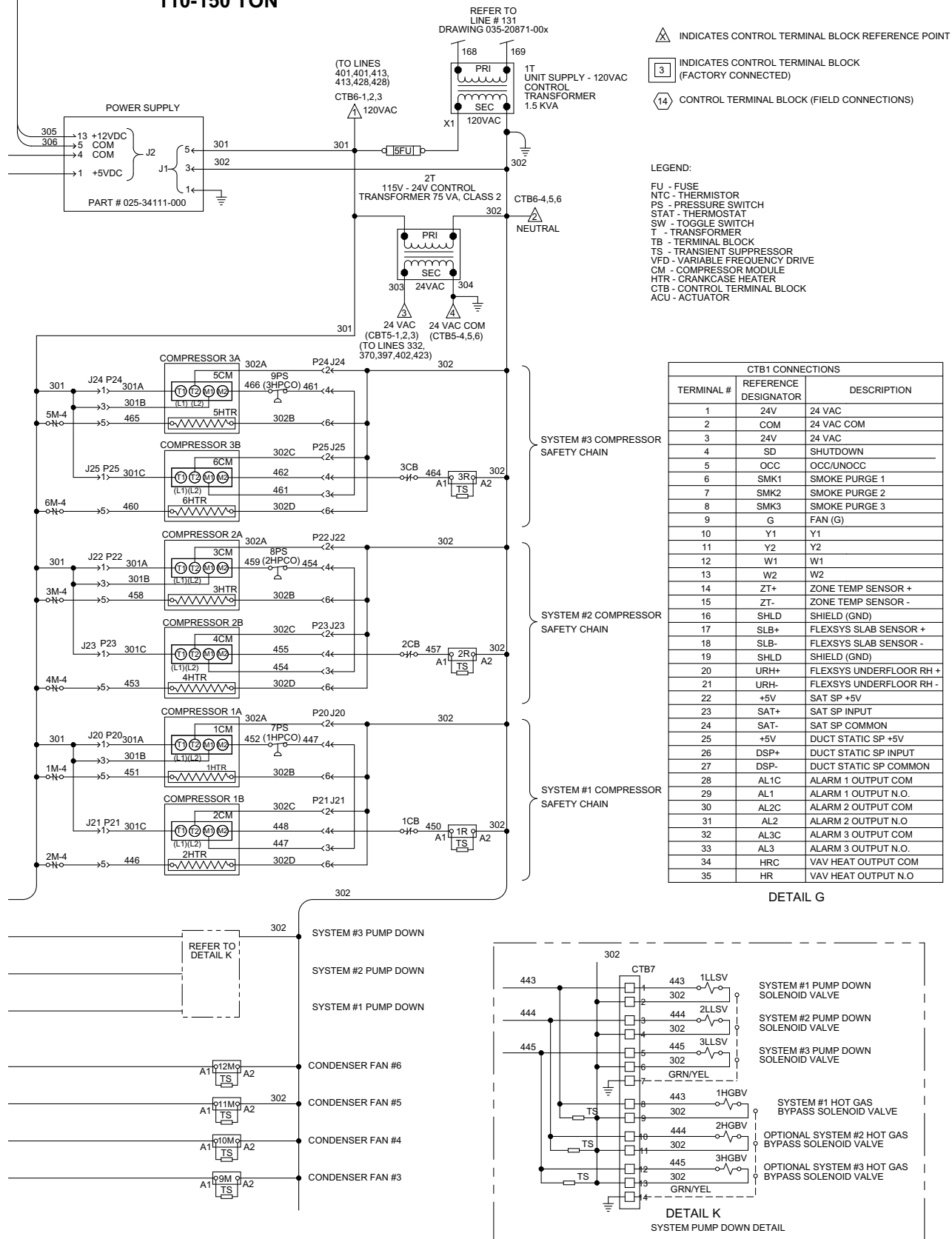
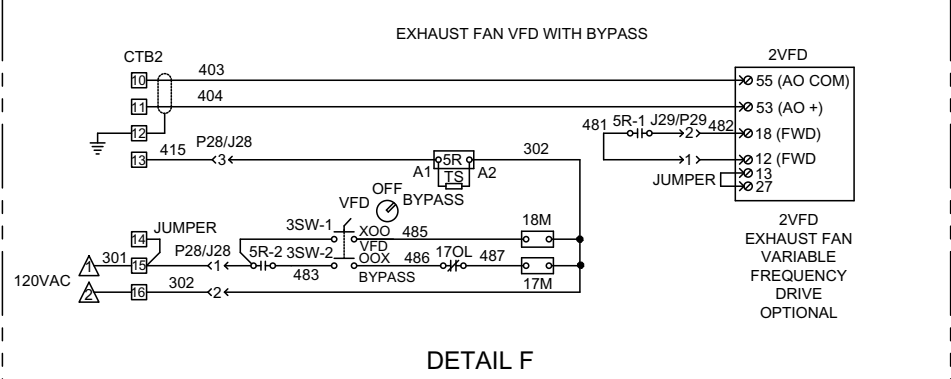
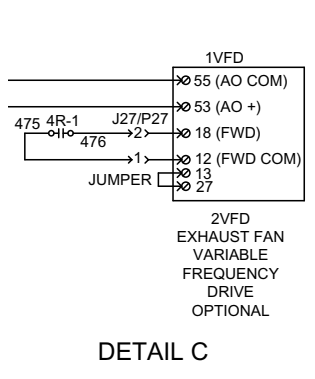
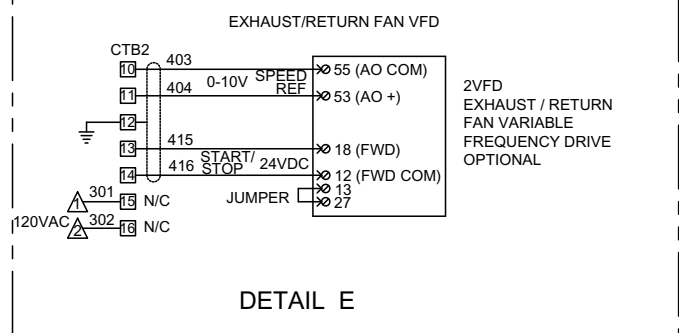
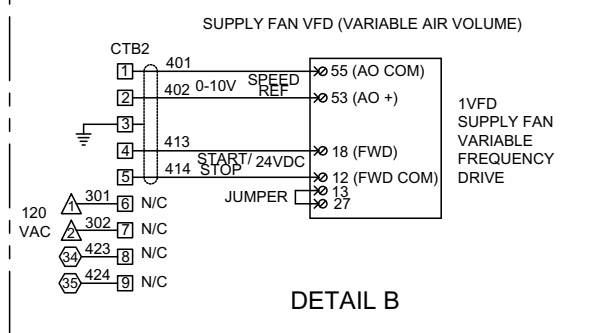
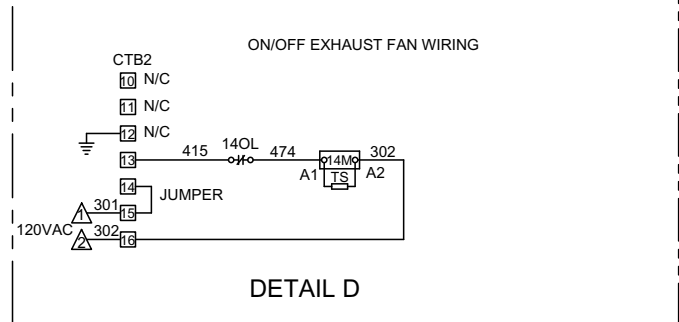
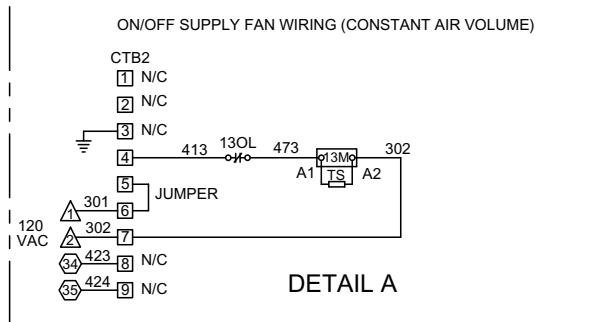
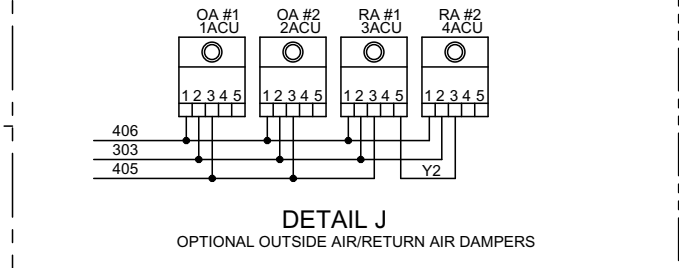
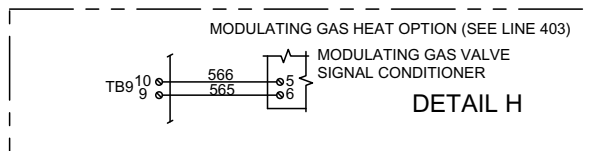
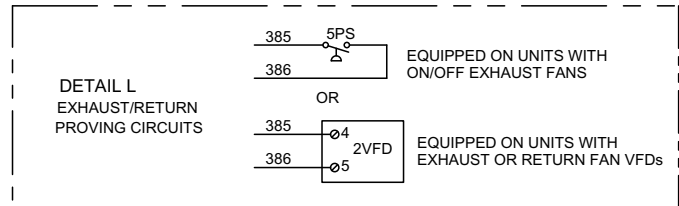
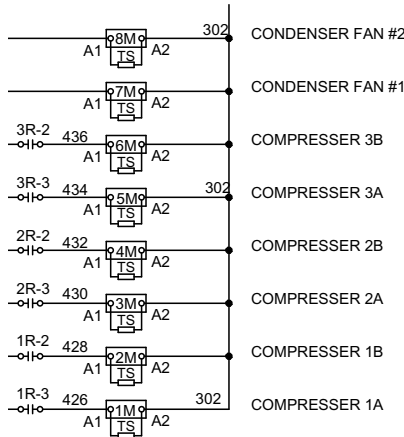


FIG. 1 – CONTROL PANEL 106-130 TON (ENLARGED VIEW 1)

**ELEMENTARY DIAGRAM
CONTROL PANEL
110-150 TON**

**035-20896-001
REV. -**





LD11341

Rev'd 04-21-05

**ELEMENTARY DIAGRAM - YPAL MOD-D
POWER SIDE - 110-150 TON
VAV W/ SINGLE POINT POWER**

**035-20871-001
REV. -**

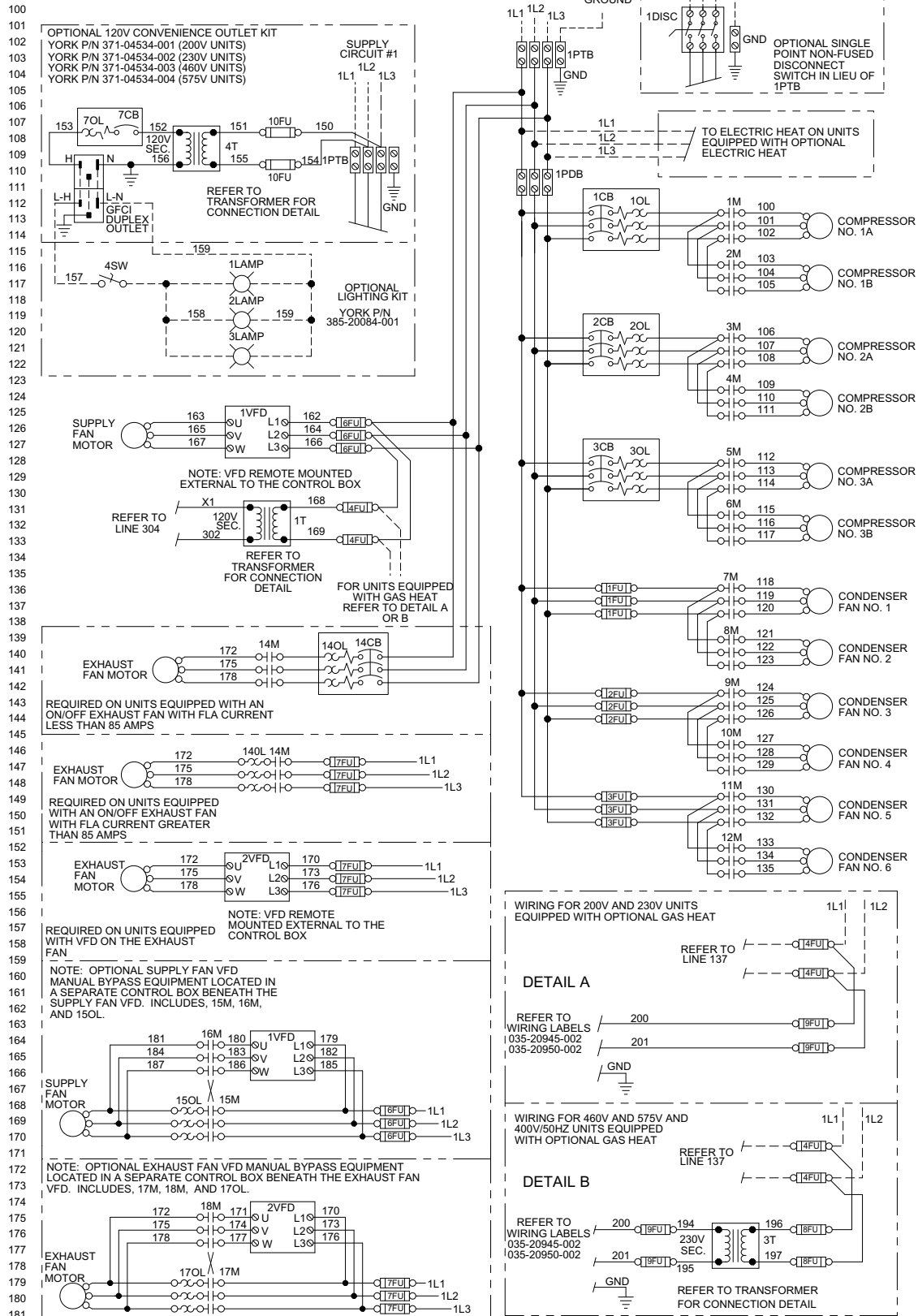
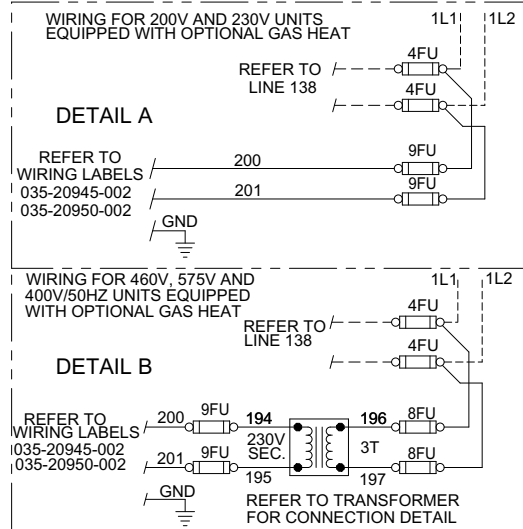
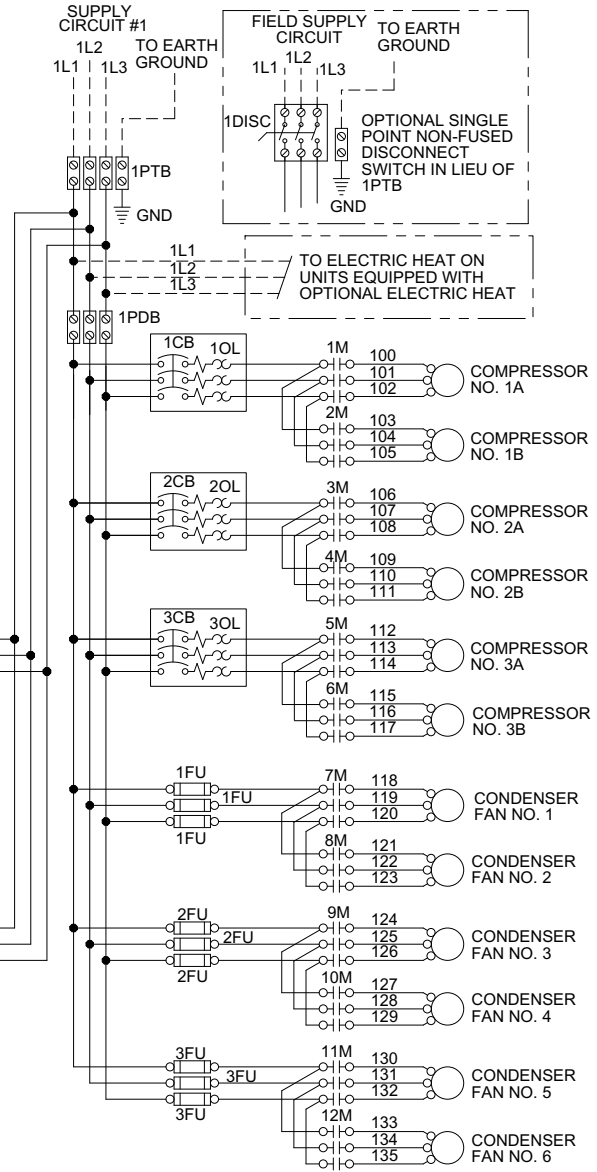
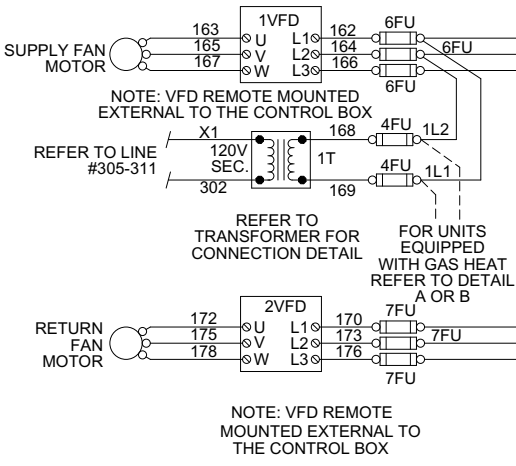
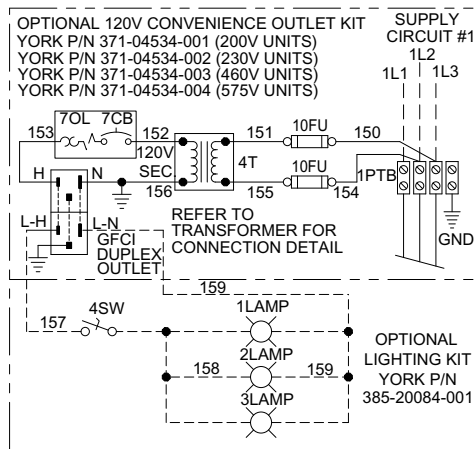


FIG. 2 – POWER SIDE - 106-130 TON VAV W/ SINGLE POINT POWER

**ELEMENTARY DIAGRAM - YPAL MOD-D
POWER SIDE - 110-150 TON
SINGLE POINT POWER w/ RETURN FAN**

**035-20871-002
REV. -**

100
101
102
103
104
105
106
107
108
109
110
111
112
113
114
115
116
117
118
119
120
121
122
123
124
125
126
127
128
129
130
131
132
133
134
135
136
137
138
139
140
141
142
143
144
145
146
147
148
149
150
151
152
153
154
155
156
157
158
159
160
161
162
163
164
165
166
167
168
169
170
171
172
173
174
175
176
177
178
179
180



Rev'd 04-21-05
LD11367

FIG. 3 – POWERSIDE - 106-130 TON SINGLE POINT POWER W RETURN FAN

ELEMENTARY DIAGRAM - YPAL MOD-D
POWER SIDE - 110-150 TON
VAV W/ DUAL POINT POWER

035-20871-003
REV. -

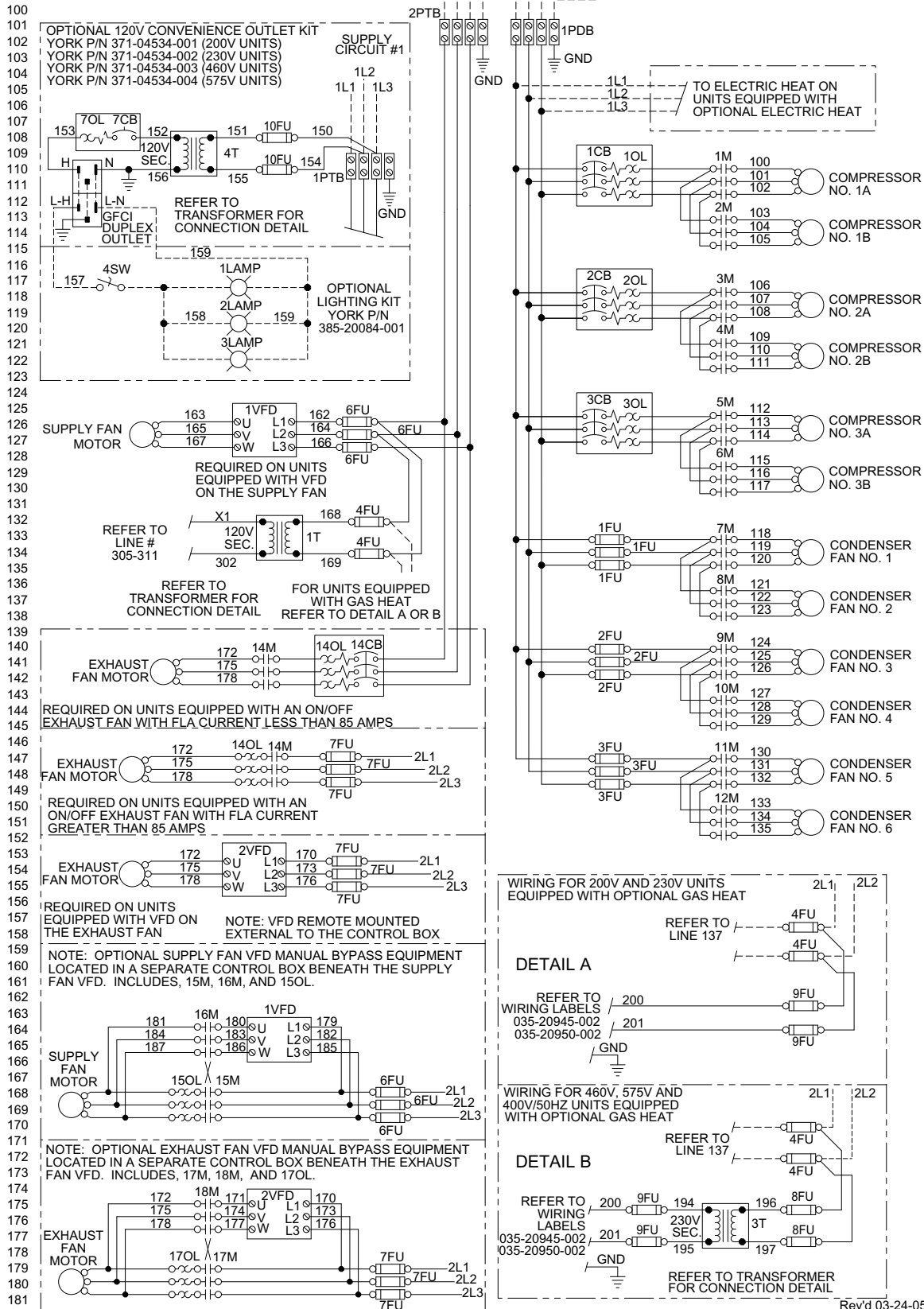
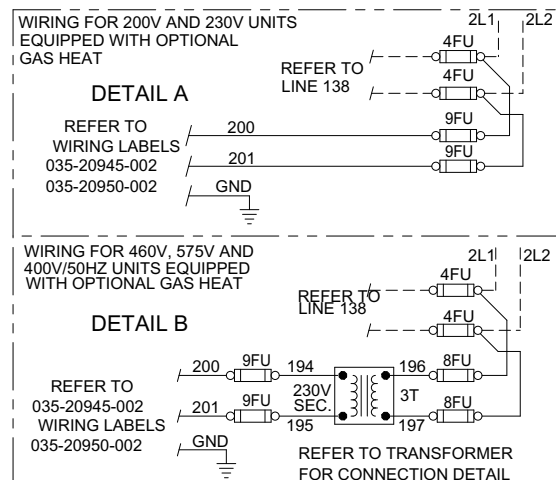
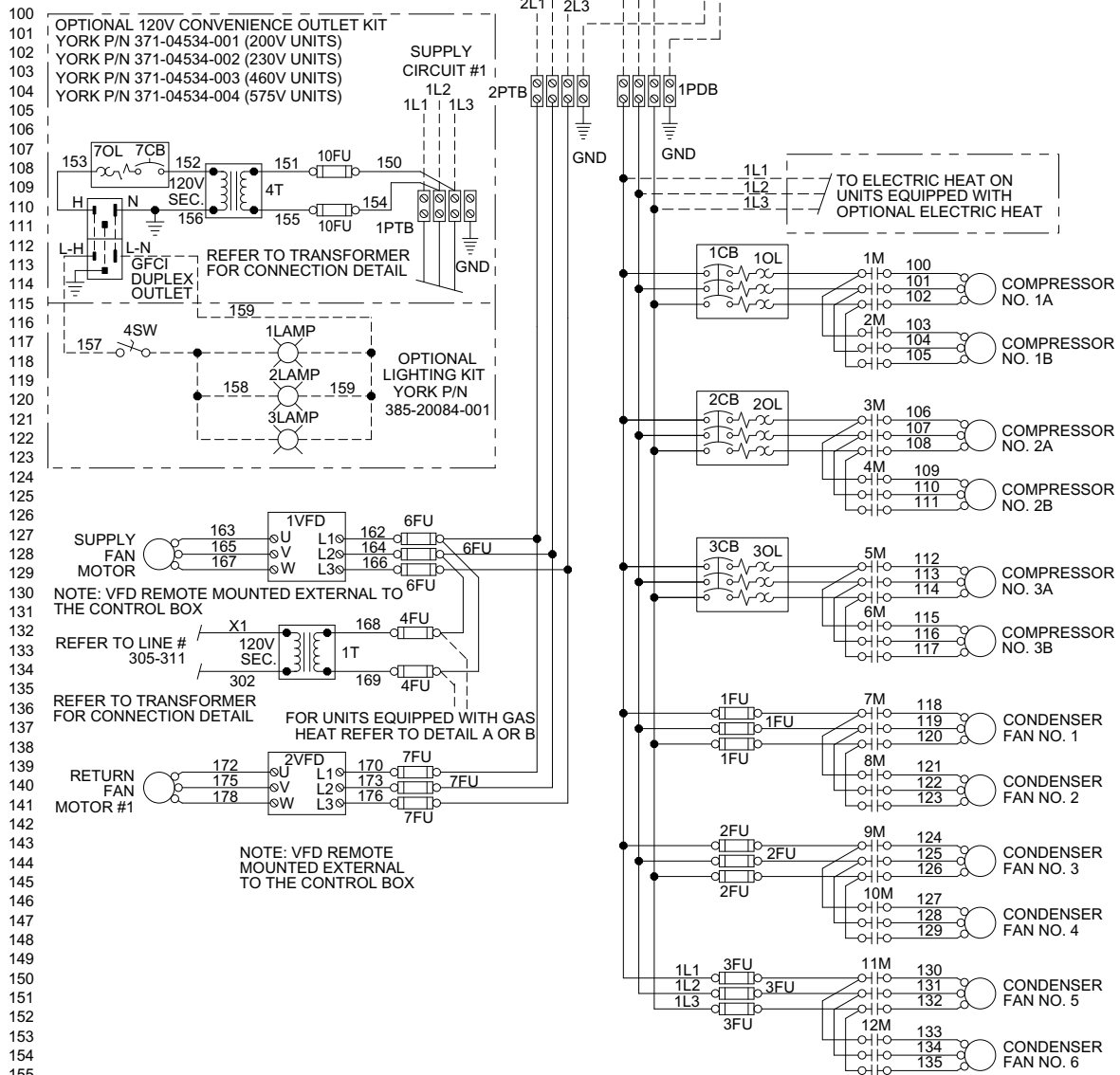


FIG. 4 – POWER SIDE - 106-130 TON VAV W/ DUAL POINT POWER

ELEMENTARY DIAGRAM - YPAL MOD-D
POWER SIDE - 110-150 TON
DUAL POINT POWER w/ RETURN FAN

035-20871-004
REV. -

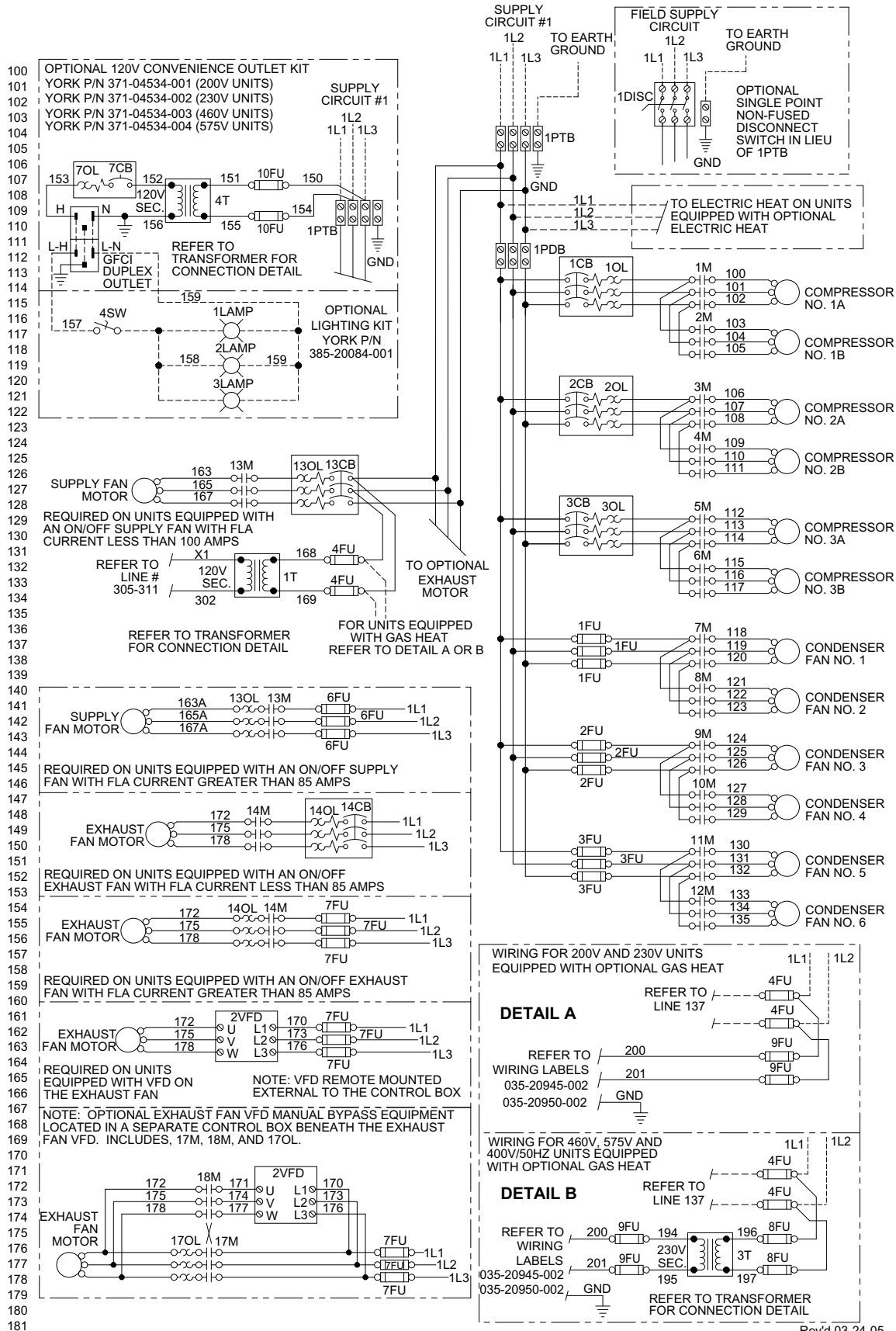


Rev'd 04-20-05
LD11369

FIG. 5 – POWER SIDE - 106-130 TON DUAL POINT POWER w/ RETURN FAN

**ELEMENTARY DIAGRAM - YPAL MOD-D
POWER SIDE - 110-150 TON
CV W/ SINGLE POINT POWER**

**035-20871-005
REV. -**



Rev'd 03-24-05
LD11370

FIG. 6 – POWER SIDE - 106-130 TON CV W/SINGLE POINT POWER

**ELEMENTARY DIAGRAM - YPAL MOD-D
POWER SIDE - 110-150 TON
CV W/ DUAL POINT POWER**

**035-20871-006
REV. -**

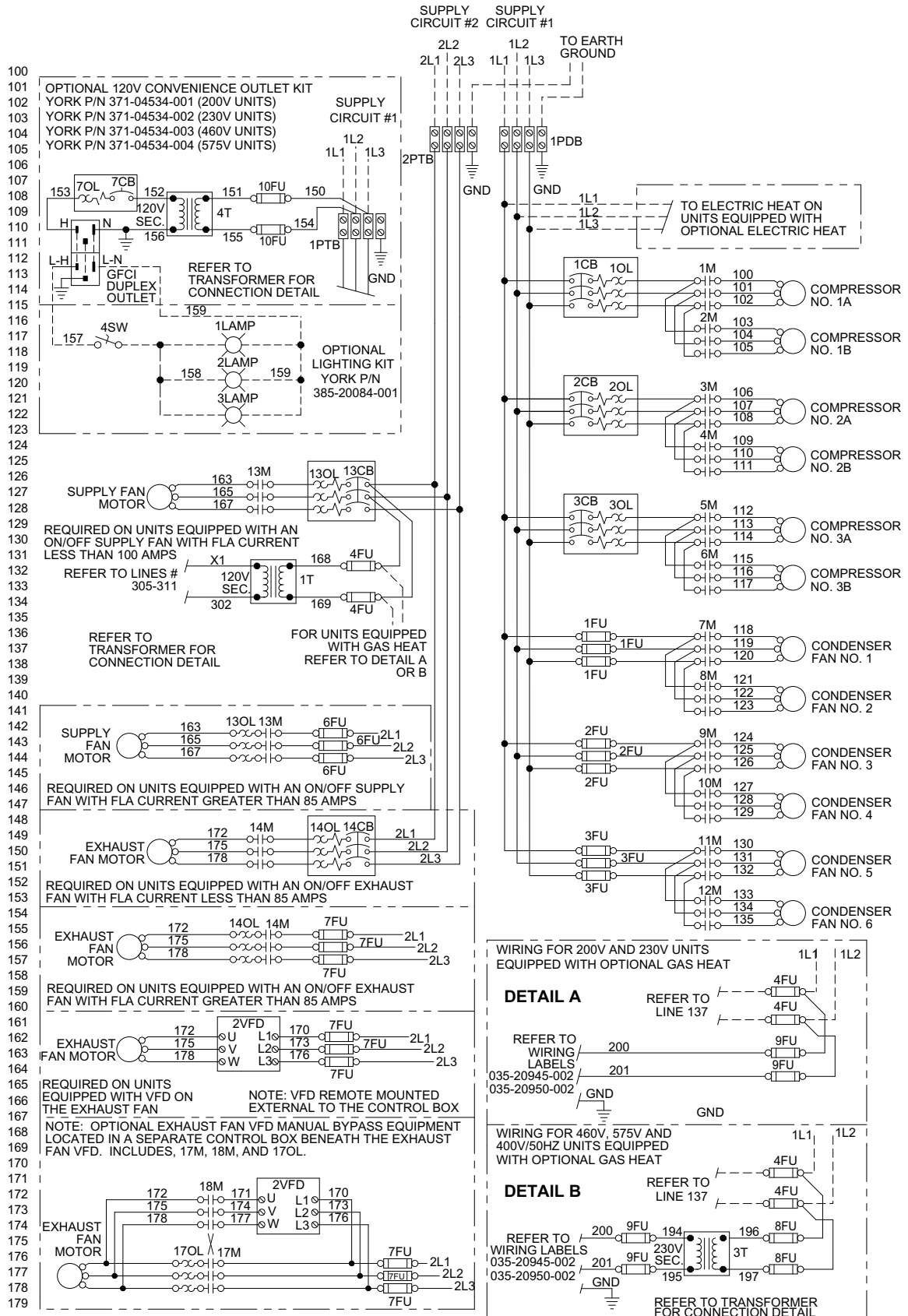


FIG. 7 – POWER SIDE - 106-130 TON CV W/DUAL POINT POWER

**ELEMENTARY DIAGRAM
YPAL MODULATING GAS HEAT
CONTROLS
70-130 TON**

**035-20945-002
REV. -**

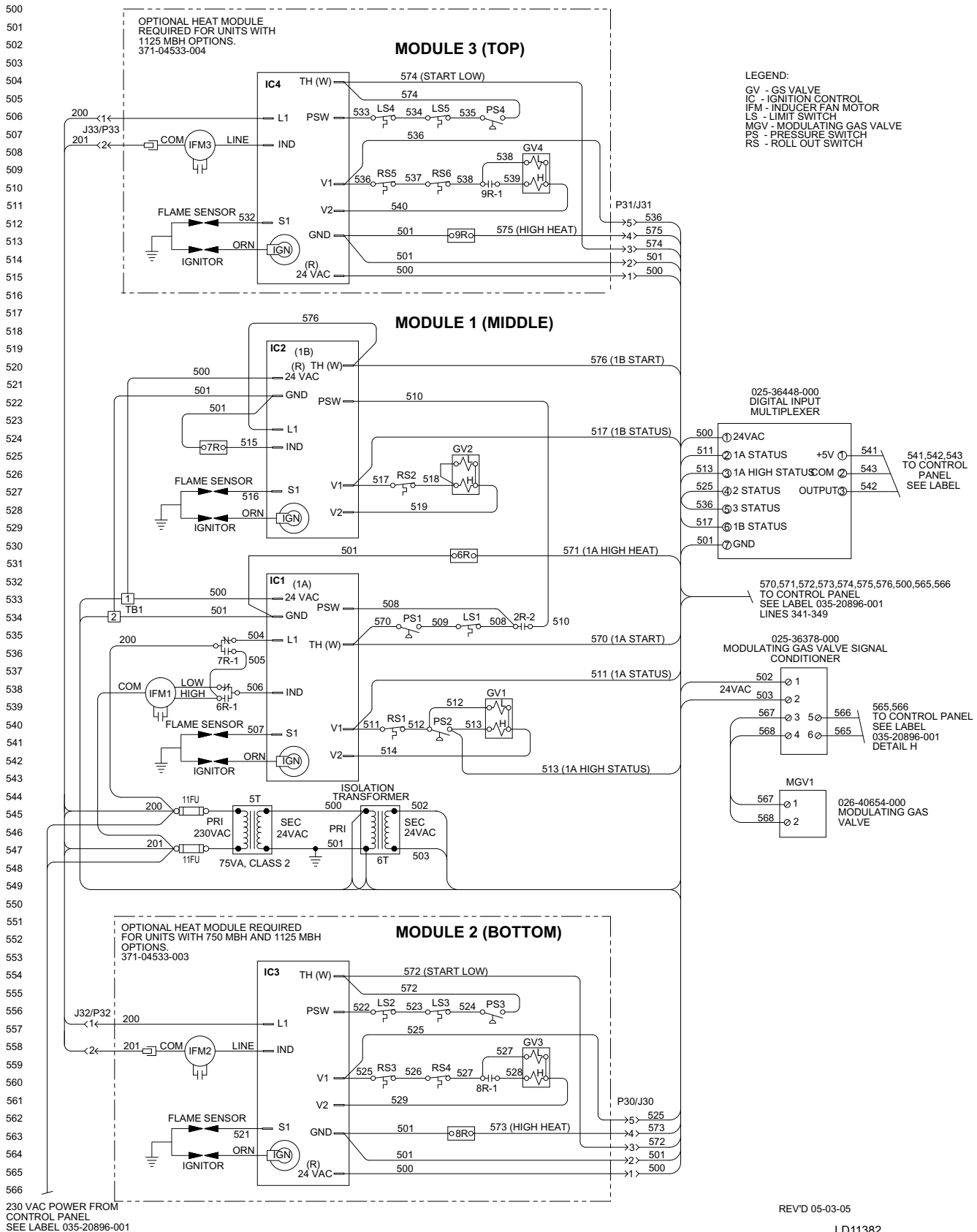


FIG. 8 – MODULATING GAS HEAT CONTROLS

**ELEMENTARY DIAGRAM
YPAL GAS HEAT CONTROLS
70-130 TON**

**035-20950-002
REV. -**

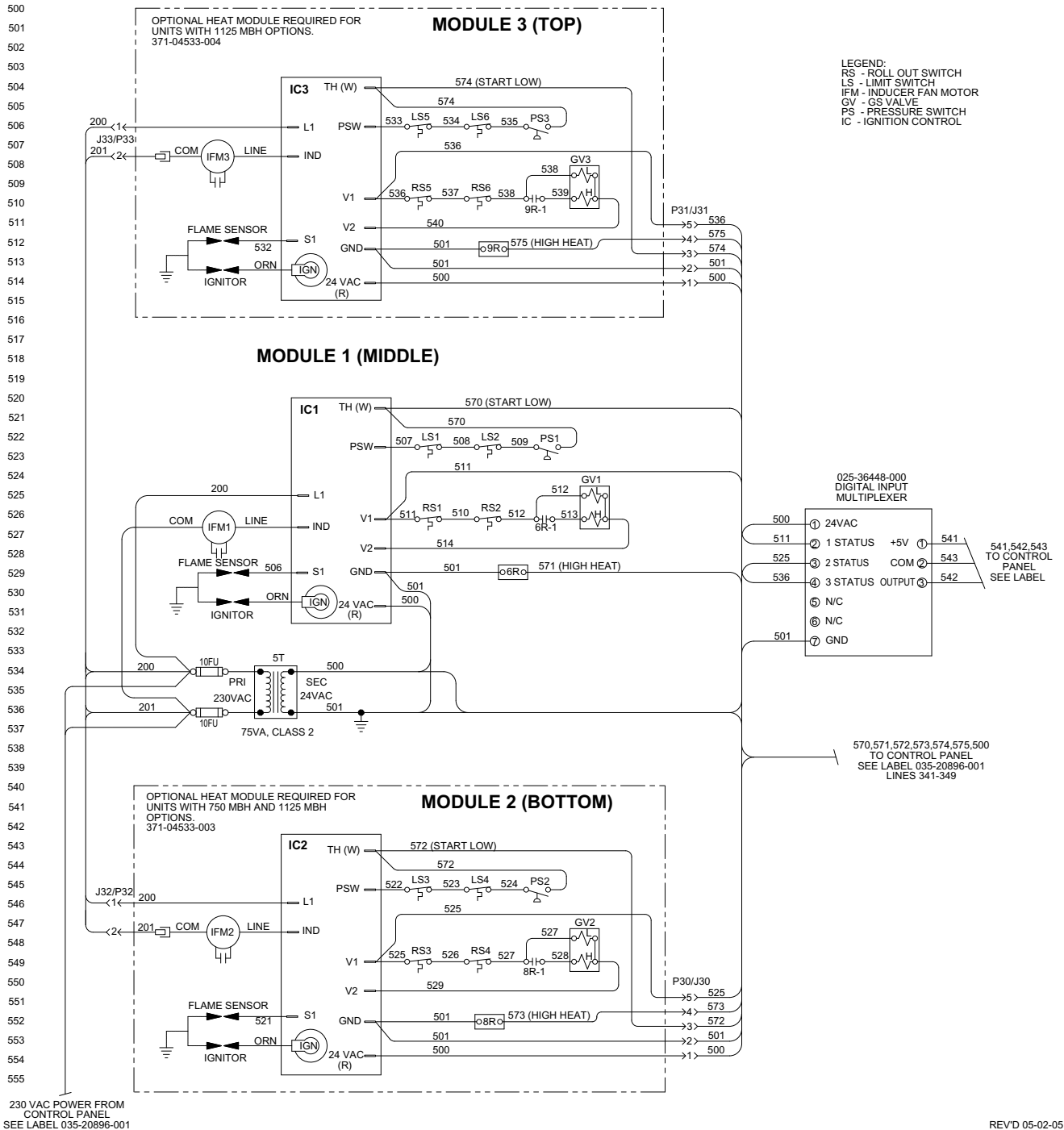
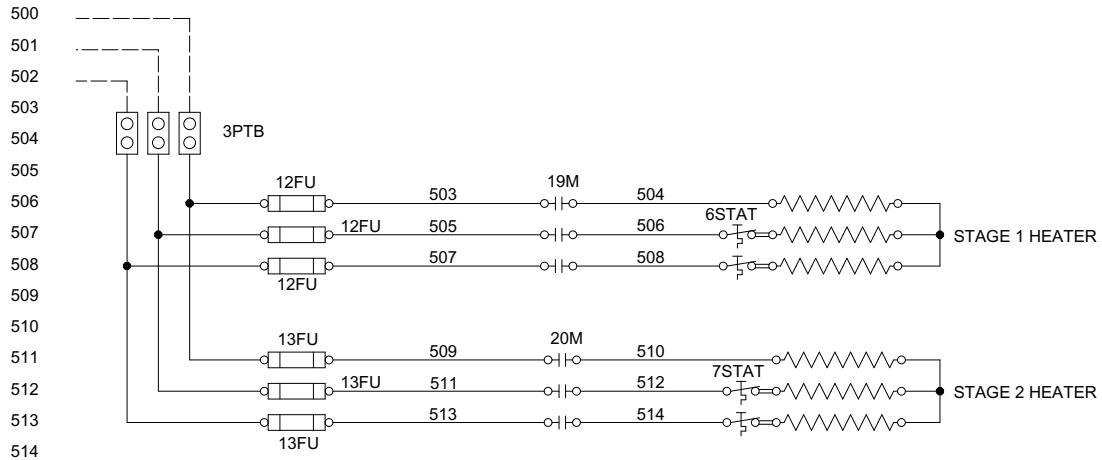


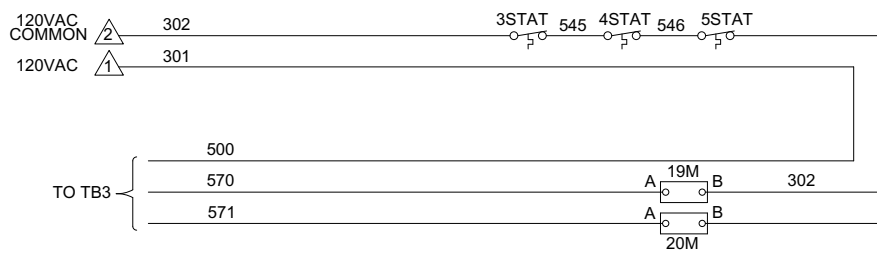
FIG. 9 – STAGED GAS HEAT CONTROLS 70-130 TON

**ELEMENTARY DIAGRAM
ELECTRIC HEAT
2 FUSE - 2 STAGE**

**035-20946-002
REV. -**



500
501
502
503
504
505
506
507
508
509
510
511
512
513
514
515
516
517
518
519
520
521
522
523
524
525
526
527
528
529
530
531
532
533
534
535
536
537
538
539
540
541
542
543
544
545
546
547
548
549
550
551
552

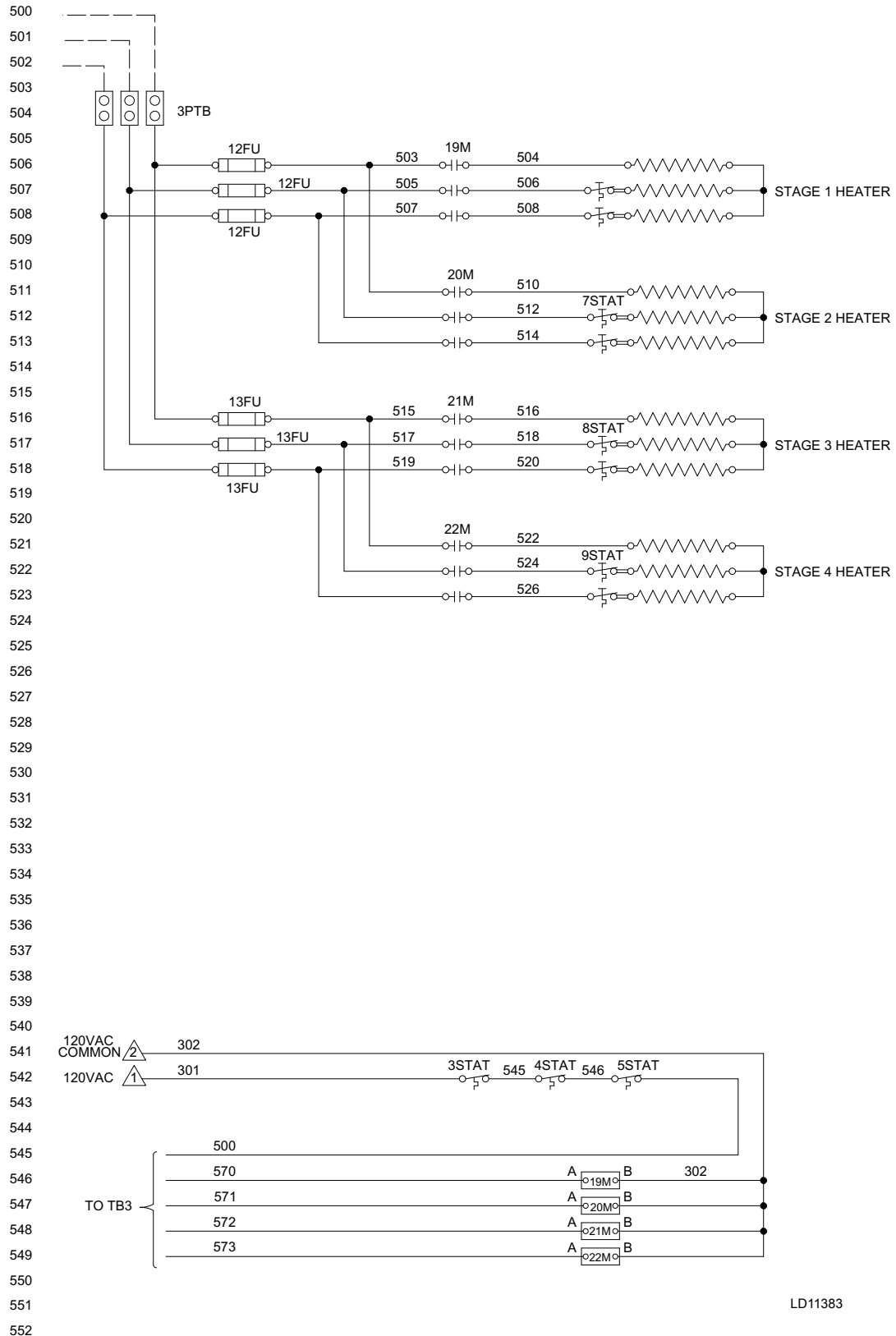


LD11381

FIG. 10 – ELECTRIC HEAT 2 FUSE - 2 STAGE

035-20946-003
REV. -

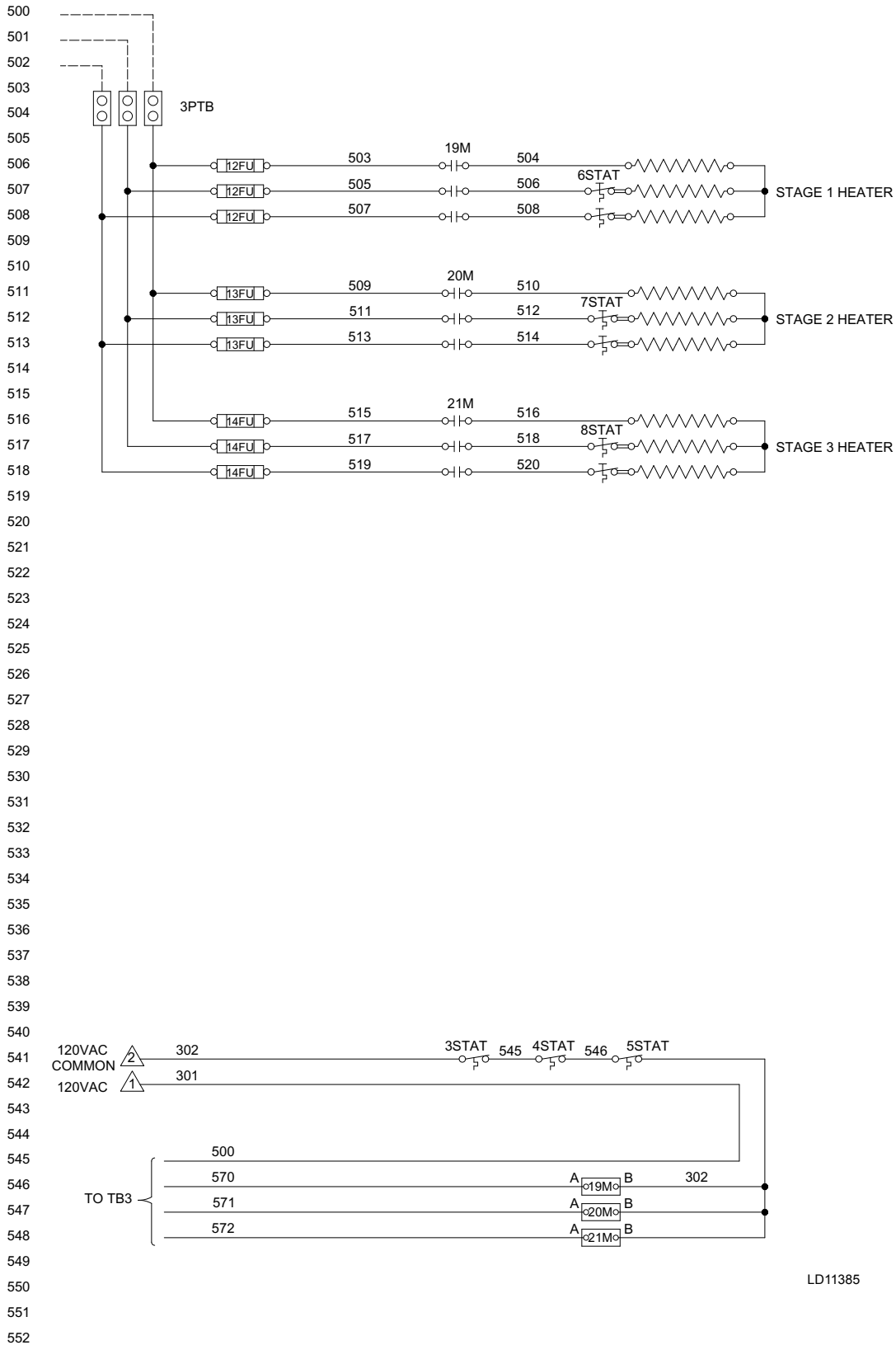
**ELEMENTARY DIAGRAM
ELECTRIC HEAT
2 FUSE - 4 STAGE**



LD11383

FIG. 11 – ELECTRIC HEAT 2 FUSE - 4 STAGE

**ELEMENTARY DIAGRAM
ELECTRIC HEAT
3 FUSE - 3 STAGE**

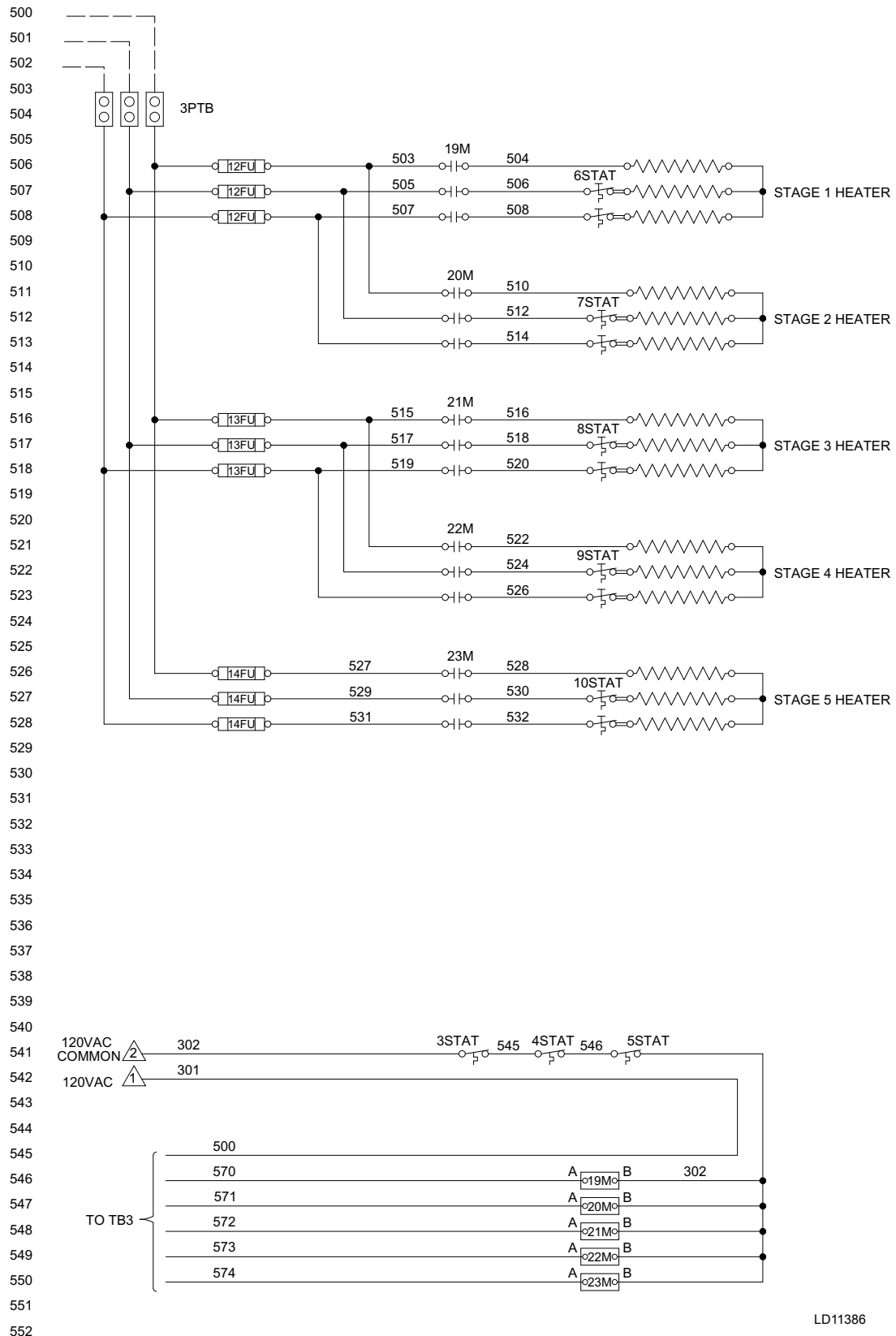


LD11385

FIG. 12 – ELECTRIC HEAT 3 FUSE - 3 STAGE

ELEMENTARY DIAGRAM
ELECTRIC HEAT
3 FUSE - 5 STAGE

035-20946-005
REV. -



LD11386

FIG. 13 – ELECTRIC HEAT 3 FUSE - 5 STAGE

**ELEMENTARY DIAGRAM
ELECTRIC HEAT
3 FUSE - 6 STAGE**

**035-20946-006
REV. -**

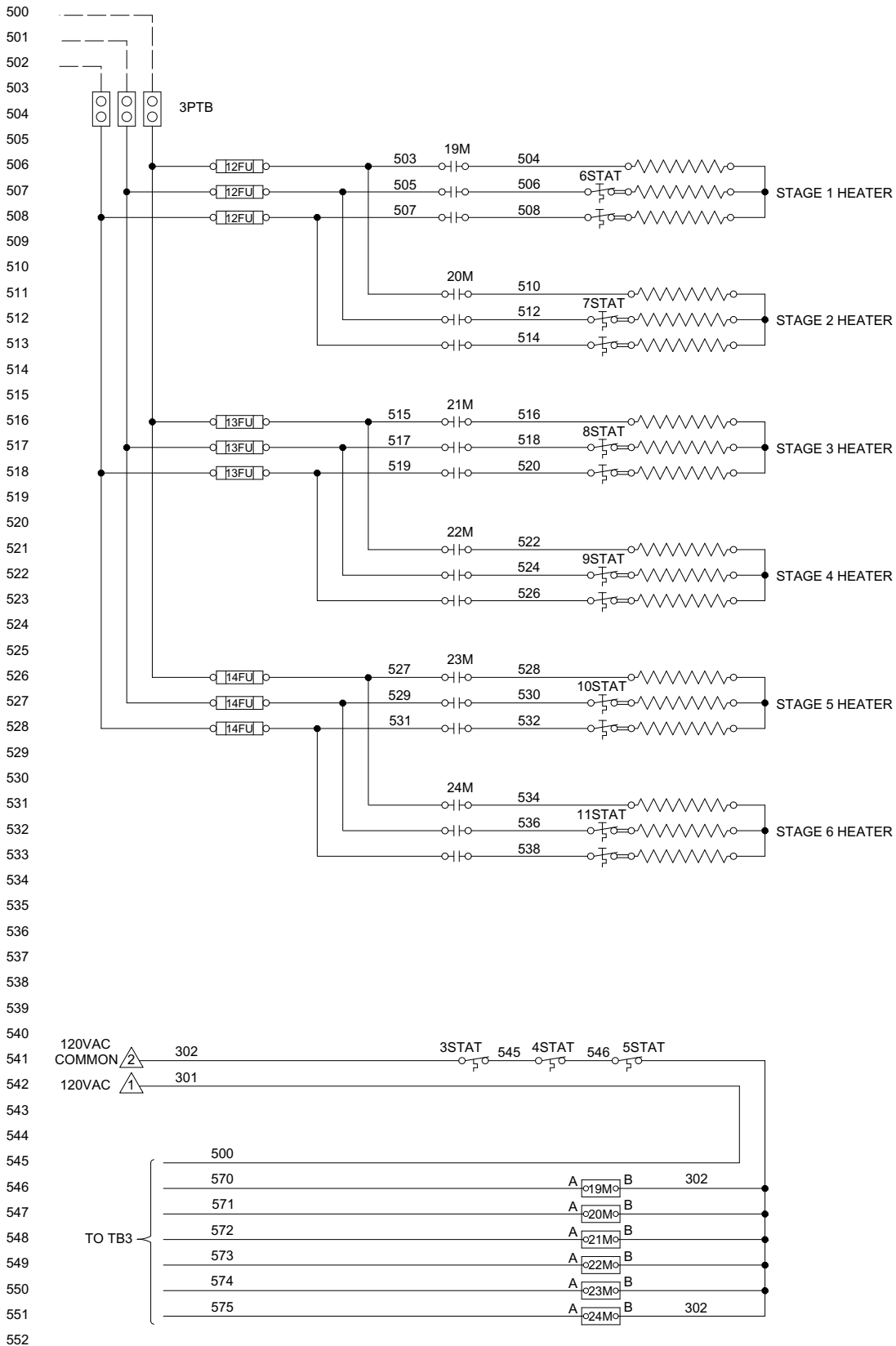
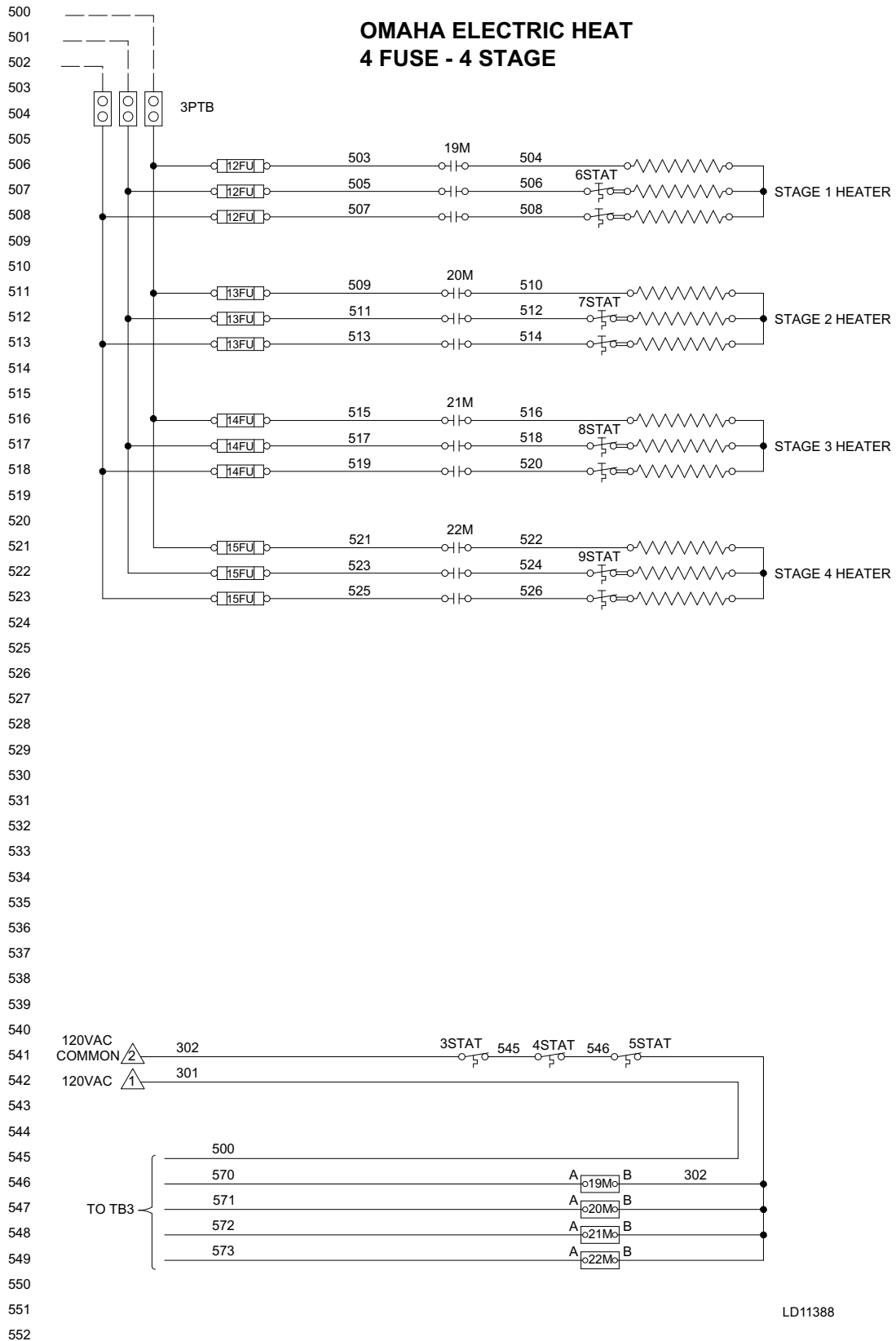


FIG. 14 – ELECTRIC HEAT 3 FUSE - 6 STAGE

LD11387

**ELEMENTARY DIAGRAM
ELECTRIC HEAT
4 FUSE - 4 STAGE**

**035-20946-007
REV. -**



LD11388

FIG. 15 – ELECTRIC HEAT 4 FUSE - 4 STAGE

**ELEMENTARY DIAGRAM
ELECTRIC HEAT
5 FUSE - 5 STAGE**

**035-20946-008
REV. -**

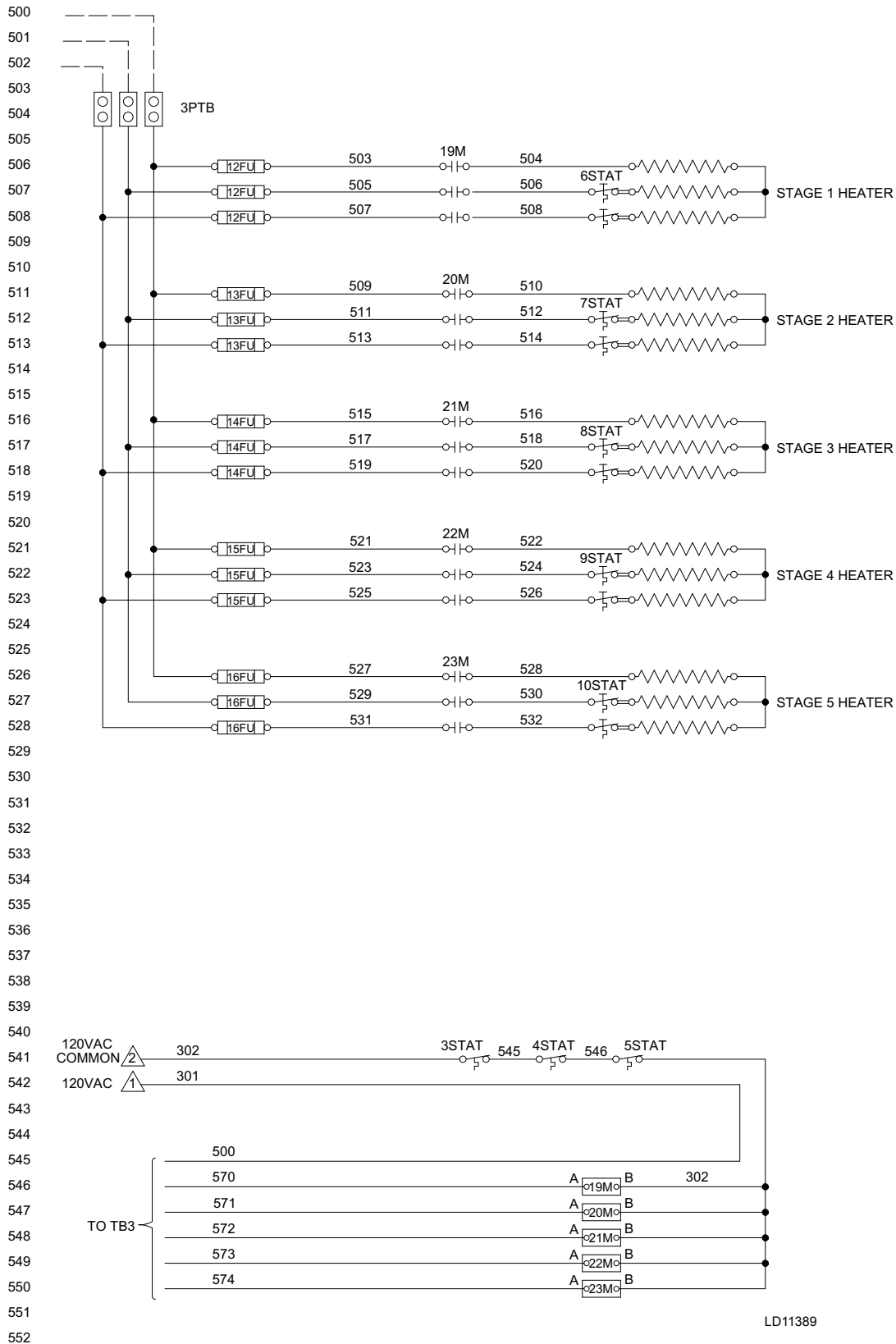
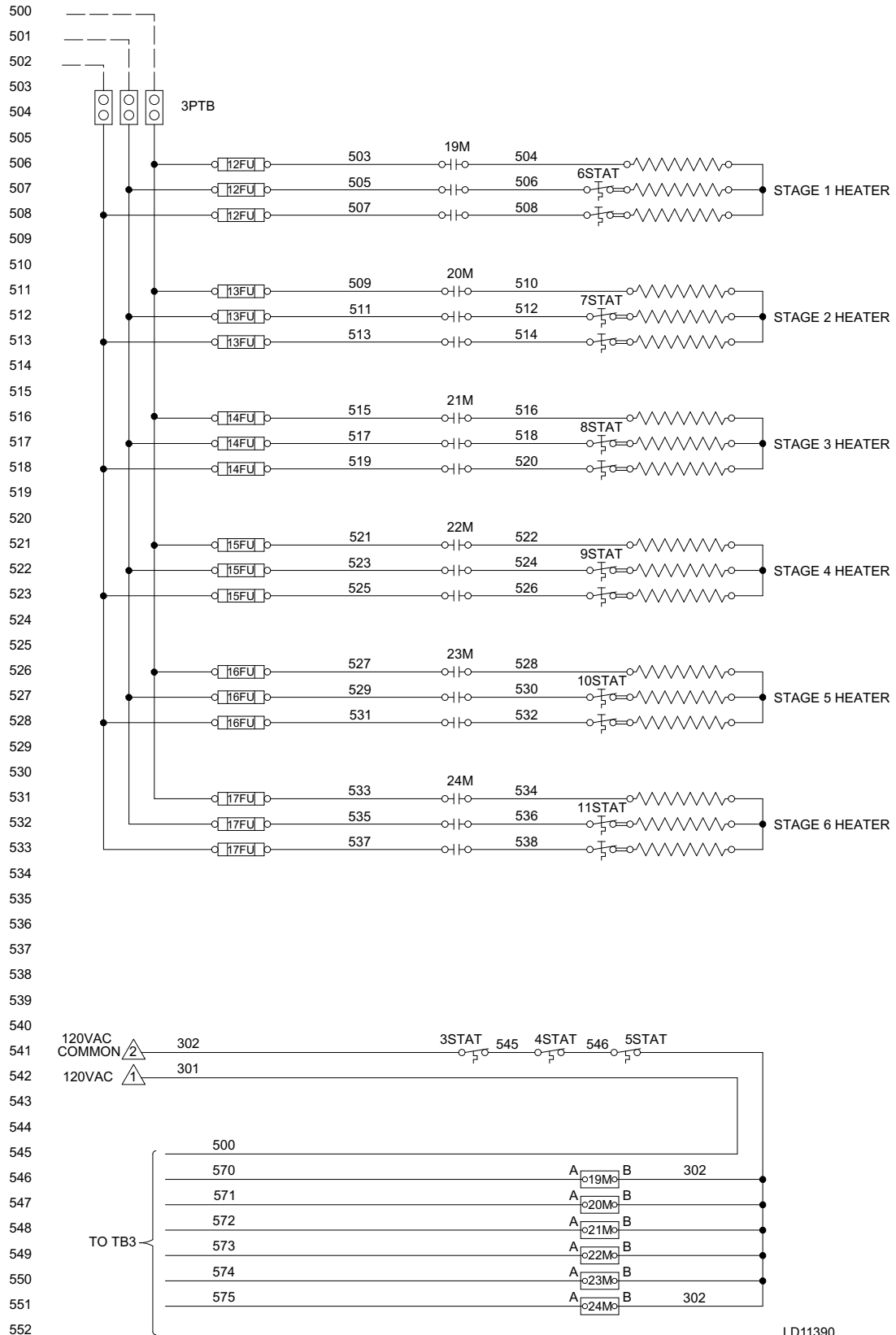


FIG. 16 – ELECTRIC HEAT 5 FUSE - 5 STAGE

ELEMENTARY DIAGRAM
ELECTRIC HEAT
6 FUSE - 6 STAGE

035-20946-009
REV. -

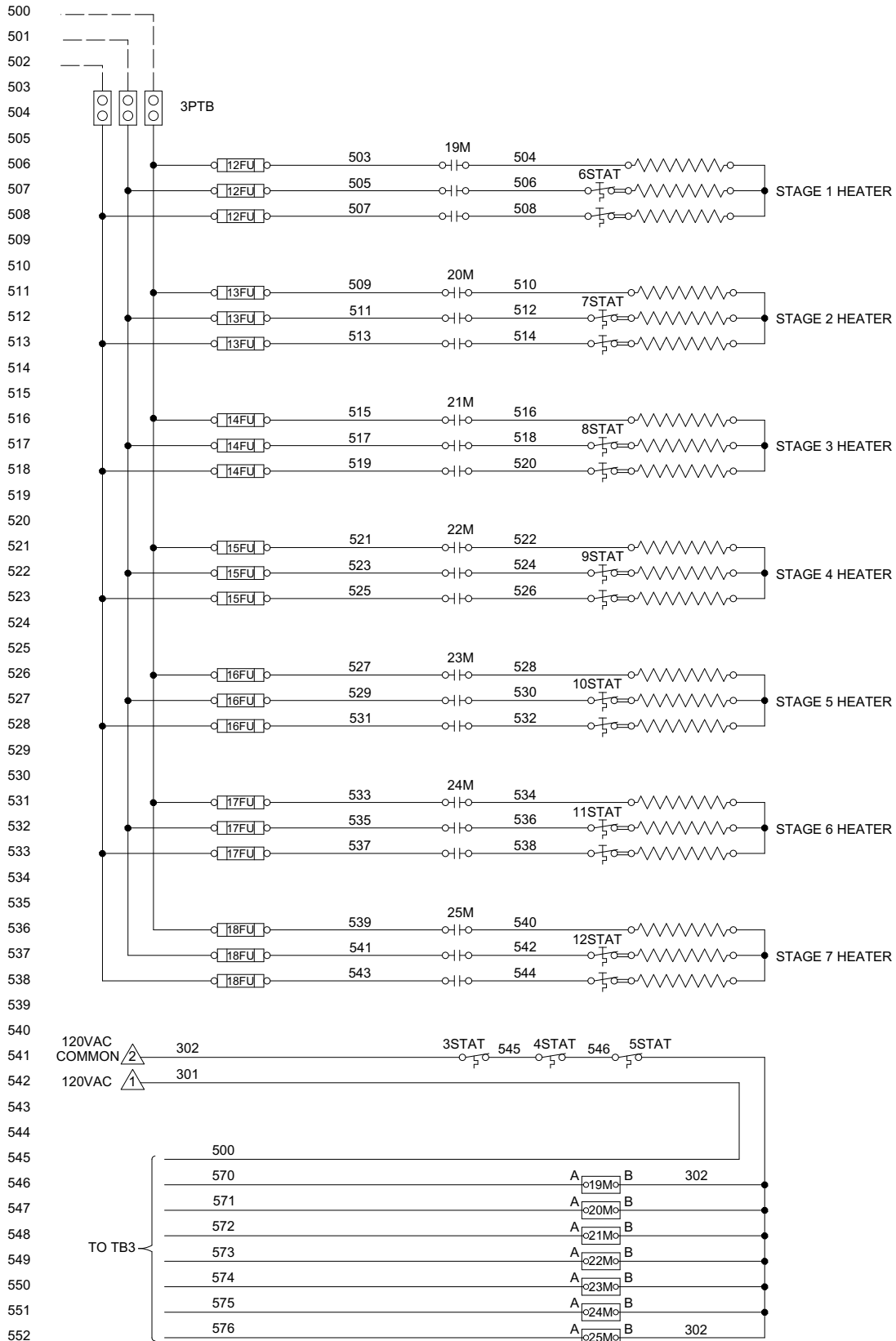


LD11390

FIG. 17 – ELECTRIC HEAT 6 FUSE - 6 STAGE

**ELEMENTARY DIAGRAM
ELECTRIC HEAT
7 FUSE - 7 STAGE**

**035-20946-010
REV. -**



LD11397

FIG. 18 – ELECTRIC HEAT 6 FUSE - 6 STAGE

NOTES

