

Technical details

Ethernet connection

10Base-T or 100Base-TX (IEEE 802.3). RJ45 connector.

Serial Port 1

EIA-232 with full modem support (RTS,CTS,DCD,DTR,DSR,RI)
300-115,200bps. 9-pole DSUB connector

Serial Port 2

EIA-232 or EIA-485. On-board termination switch for EIA-485.
300-115,200bps. RJ12 connector.

Power Supply

9-32 VAC/DC (1.2VA)

Real-time clock

Real-time clock with back-up.

Digital input

Two digital input, optical isolation. 10-30VDC

LED's

4 LED's for module status (1), serial link status (1) and
Ethernet status (2).

Memory

4 - 8Mb Flash memory for easy upgrade of firmware or for storing
web pages.

Temperature range

Operating: 0-55 °C
Storage: -25 - 75 °C

Humidity range

5-95% RH, non-condensing

Cover material

Grey plastic, LEXAN 940, self-extinguishing acc. to UL94-V0

Mounting option

DIN rail (EN 50022)

Default protocols

TCP/IP, HTTP, FTP, ICMP, SMTP, Telnet, DHCP and PPP

WWW server

Full-featured web-server with support for authentication and cgi-scripts

Dimensions

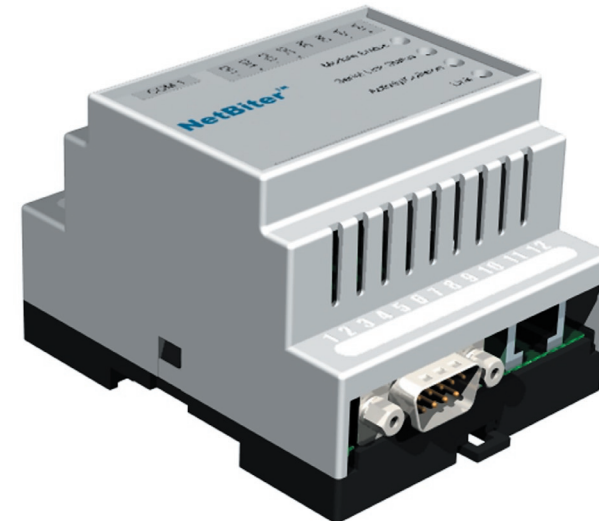
H57,7mm x W70,0mm x D86,0mm

CE certification

According to EN 50 081-2:1993 and EN 61000-6-2:1999

Pocket Guide NetBiter™ TCP/IP Gateway Platform

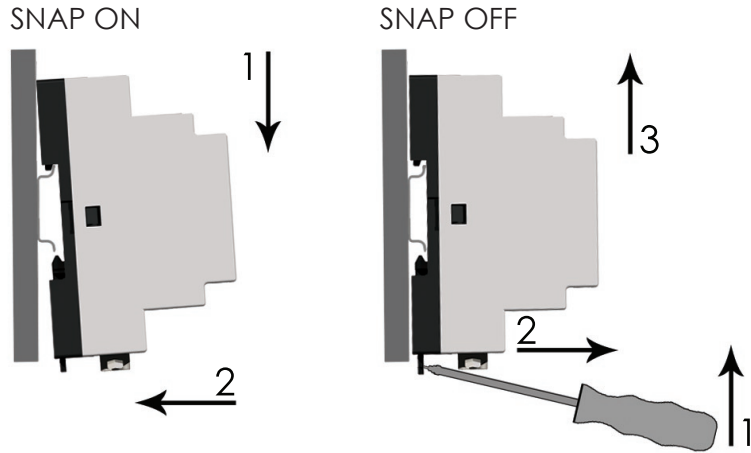
Rev 1.0



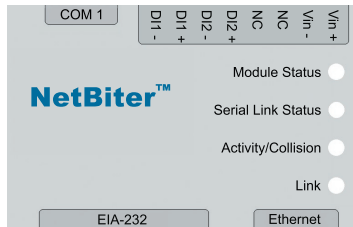
IntelliCom Innovation AB
Pilefeltsgatan 93-95
S-302 50 Halmstad
Sweden

Phone +46 (0)35 - 17 29 90
Fax +46 (0)35 - 17 29 09
E-mail info@intellicom.se
Web www.intellicom.se

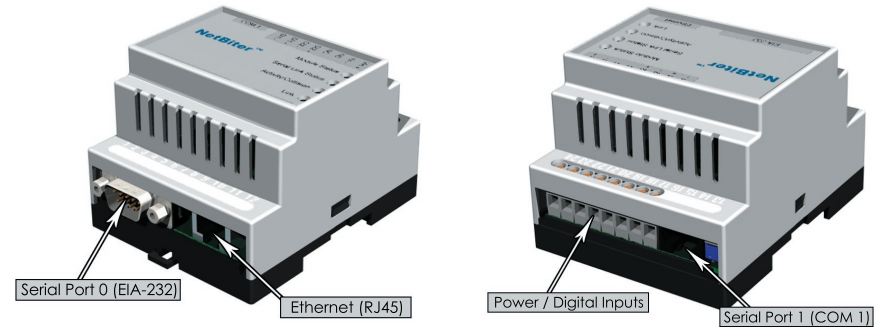
DIN Rail Mounting



LED Description

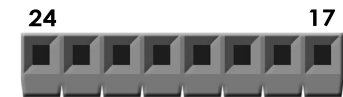


Name	Color	Function
Module Status	OFF	No power
	Green	Turned On – Module is running in normal mode
	Red	Turned On – Hardware fault Flashing Red 1 Hz – Error during initialization
Serial Link Status	Green	Application specific
	Red	Application specific
Ethernet Activity/Collision	Green	Flashing – Packet receive
	Red	Flashing – Ethernet Collision
Link	Green	Turned On – Ethernet network detected, 10Mbps
	Orange	Turned On – Ethernet network detected, 100Mbps



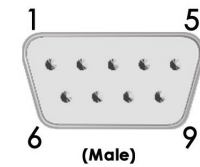
Power/ Digital Inputs

Pin	Description
24	Vin +
23	Vin -
22	No Connect
21	No Connect
20	Digital Input 1 + (10-24VDC)
19	Digital Input 1 - (GND)
18	Digital Input 2 + (10-24VDC)
17	Digital Input 2 - (GND)



Serial Port 0

Pin	Description
1	CD (Carrier Detect)
2	Rx (Receive)
3	Tx (Transmit)
4	DTR (Data Terminal Ready)
5	GND
6	DSR
7	RTS (Request To Send)
8	CTS (Clear To Send)
9	RI (Ring Indicator)



Serial Port 1

Pin	Description
1	EIA-485 Line A
2	EIA-485 Line B
3	GND
4	GND
5	EIA-232 Transmit
6	EIA-232 Receive

