

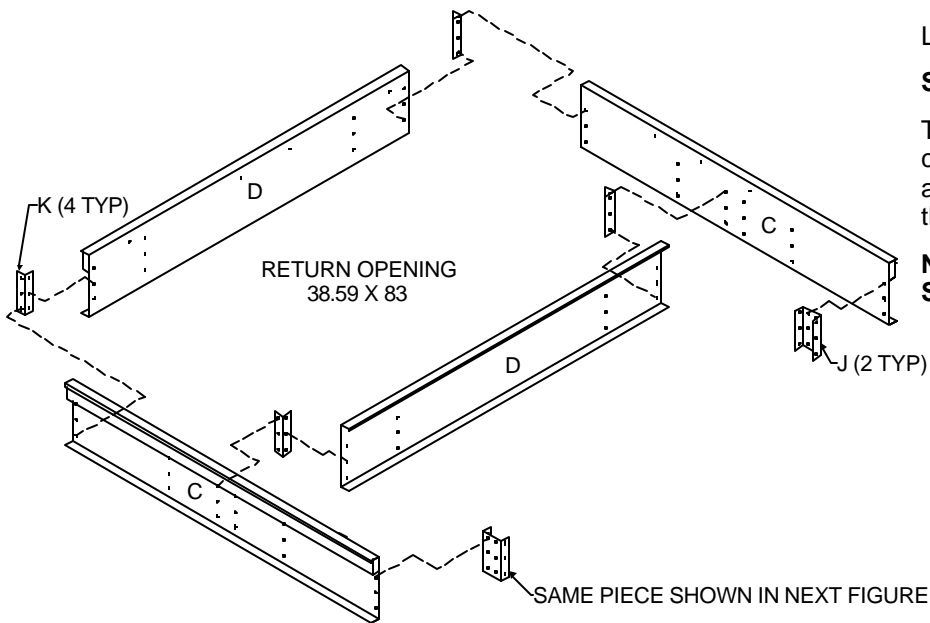
INSTALLATION INSTRUCTIONS

ROOF CURB ACCESSORY MODEL# 026-33207-000 / 1RC0455F 30-40 TON FULL PERIMETER ROOF CURB

This Roof Curb is NRCA approved and is constructed of 14 gauge galvanized steel with a full perimeter 2" X 4" wood nailer strip. The curb is shipped with the following parts:

- A) 1 Side Panel Right 71.32 x 14
- B) 1 Side Panel Left 71.32 x 14
- C) 4 Side Panels 81.840 x 14
- D) 4 End Panels 83 x 14
- E) 1 End Panel 83 x 11
- F) 1 Supply Panel 26 x 14
- G) 2 Support Rail 83 x 3
- H) 3 Condenser Panels
- J) 4 Slice Channels
- K) 10 Corner Brackets
- L) 2 Condenser Panel Flashing
- M) 1 Hardware Package
 - (90) .375-16 x 1.00 Hex Bolt w/ Nuts
 - (90) .375 Helical Lock Washers
 - (90) 375 Flat Washers
 - (116) 25-14 x .75 Screw Tapping (Washer Head Seal Tight)
 - (5) 69 FT. 3/4 X 1 1/4 Foam Gasket
 - (3) 90 FT. 3/4 x 1/8 Tacky Tape

RETURN END SECTION OF CURB



STEP 1:

Layout the curb pieces shown

STEP 2:

Tighten the 3/8" bolts on all four (K) corner brackets making sure the corners are flush and square. Place the curb in the proper location.

Note: MAKE SURE THE CURB SECTION IS "IN SQUARE".

FIGURE 1

INSTALLATION INSTRUCTIONS

ROOF CURB ACCESSORY MODEL# 026-33207-000 / 1RC0455F 30-40 TON FULL PERIMETER ROOF CURB

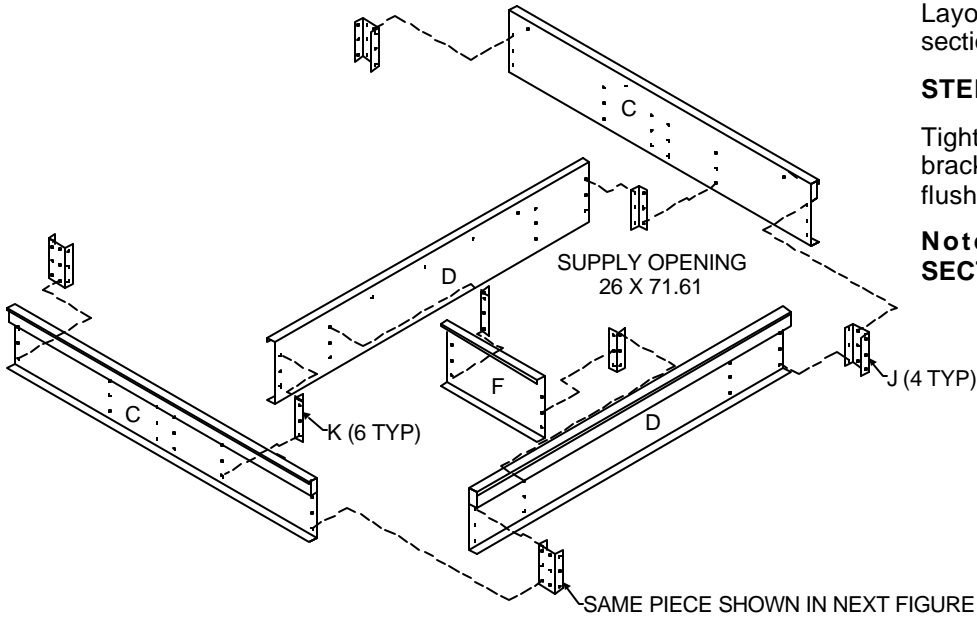


FIGURE 2

STEP 3:

Layout pieces shown at end of previous section.

STEP 4:

Tighten the 3/8" bolts on all six (K) corner brackets making sure the corners are flush and square.

Note: MAKE SURE THE CURB SECTION IS "IN SQUARE".

STEP 5:

Layout pieces shown at end of previous section.

STEP 6:

Tighten the 3/8" bolts on all two (K) corner brackets making sure the corners are flush and square.

Note: MAKE SURE THE CURB SECTION IS "IN SQUARE".

STEP 7:

Screw two (G) support rails into place with .25-14 x 1" screws.

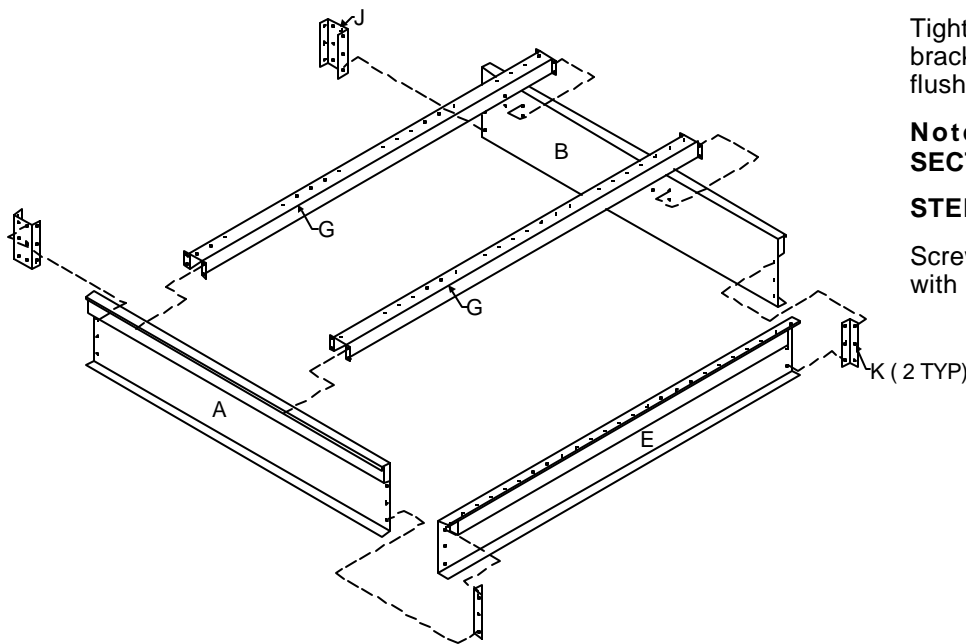
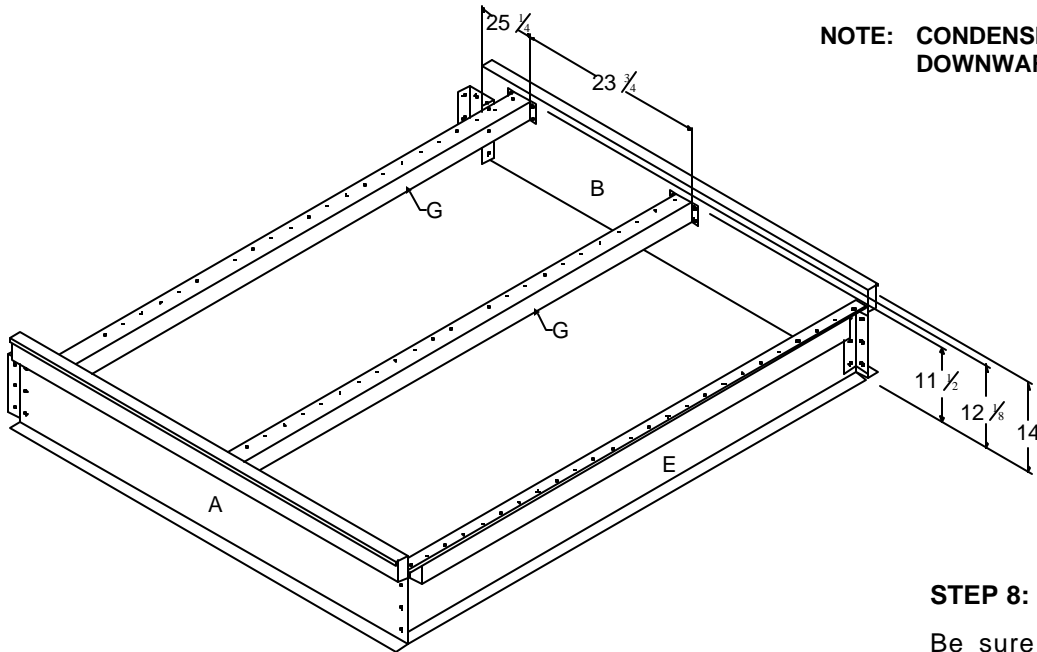


FIGURE 3

INSTALLATION INSTRUCTIONS

ROOF CURB ACCESSORY
 MODEL# 026-33207-000 / 1RC0455F
 30-40 TON FULL PERIMETER
 ROOF CURB



NOTE: CONDENSER PANS MUST SLOPE DOWNWARD TOWARD END PANEL (E).

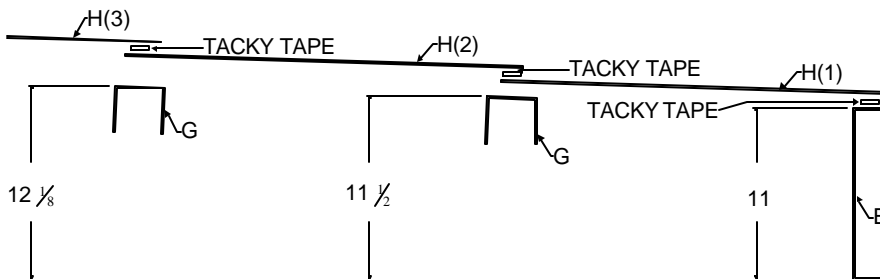


FIGURE 4

STEP 8:

Be sure support rails are located properly so condensation can run off condenser panels.

STEP 9:

Place 3/4 x 1/8 tacky tape in locations shown in Figure 4.

STEP 10:

Place condenser panels in order labeled. As each panel is in place fasten lower edge of panel with .25-14 x 1" screws.

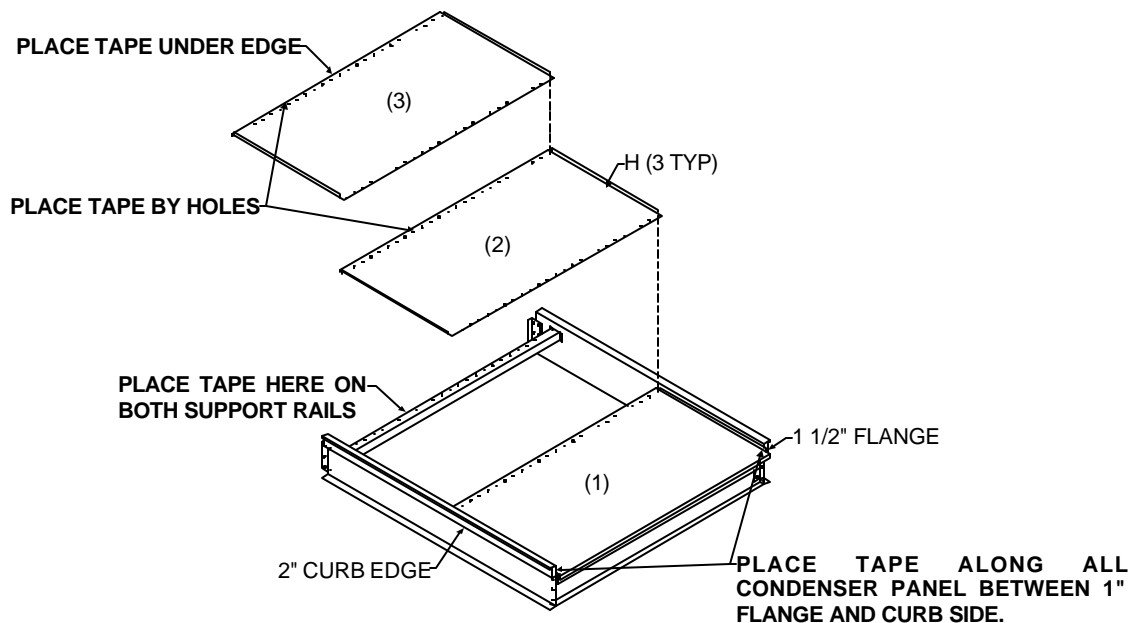


FIGURE 5

INSTALLATION INSTRUCTIONS

ROOF CURB ACCESSORY MODEL# 026-33207-000 / 1RC0455F 30-40 TON FULL PERIMETER ROOF CURB

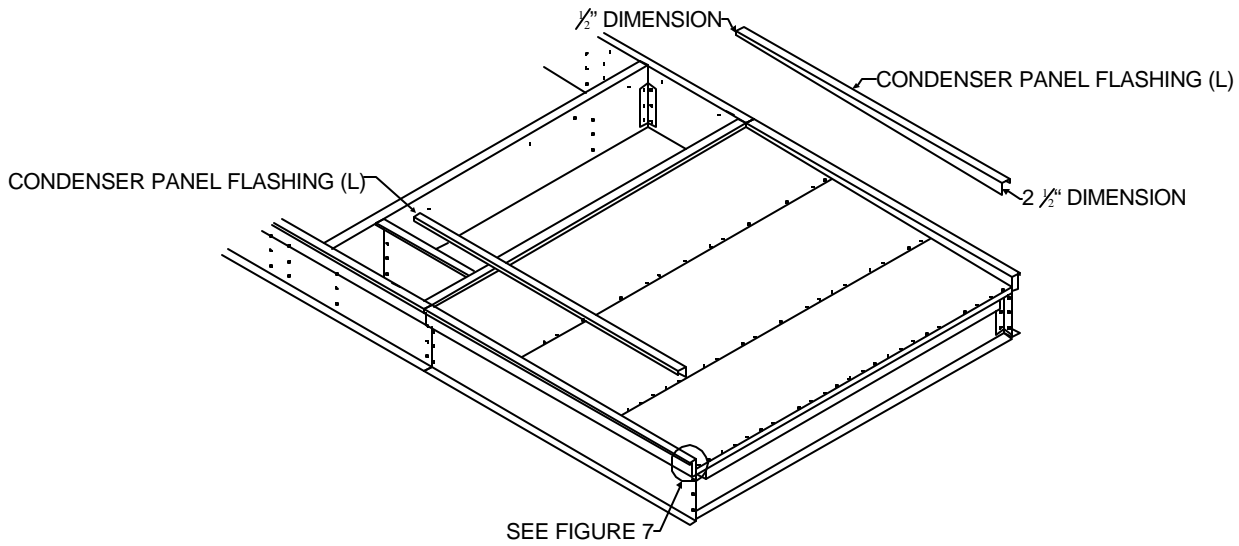


FIGURE 6

STEP 11:

Now place tacky tape along flat part of panels.

STEP 12:

Place sloped condenser panel flashing over curb 2" edge.

STEP 13:

Place 3/4 x 1 1/4 foam gasket around top of curb.

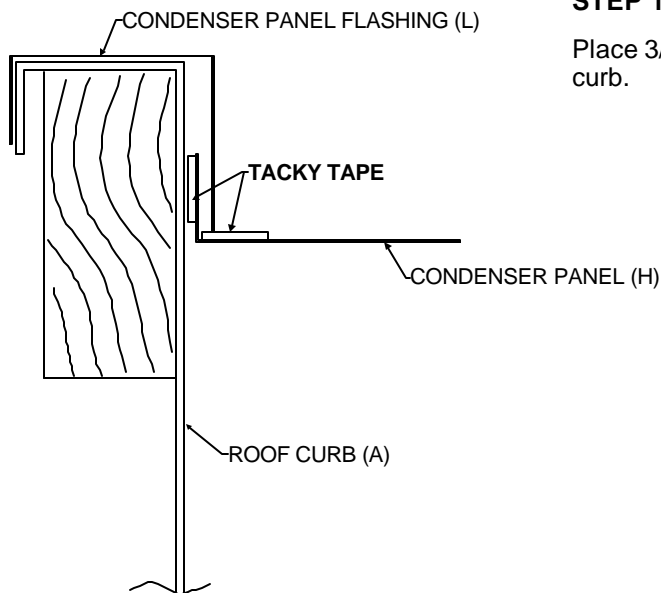


FIGURE 7

INSTALLATION INSTRUCTIONS

ROOF CURB ACCESSORY
MODEL# 026-33207-000 / 1RC0455F
30-40 TON FULL PERIMETER
ROOF CURB

ROOF INSTRUCTIONS

