

REPLACEMENT PARTS

Supersedes: Nothing

e 530.70-RP1Y (398)

P/E DAMPER PARTS (MODULATING)

FIG	ITEM	UNIT STYLE	DESCRIPTION	Y13 & Y14 30 & 40 TON
15	(1)		ACTUATOR, DAMPER (BELIMO) [ACT2]	025-32744-000
15	2		BLADE, DAMPER (4-REQ'D W/1-BRKT. & SEAL)	373-18715-018
15	3		BLADE, DAMPER (4-REQ'D W/2-BRKT. & SEAL)	373-18715-019
15	4		BUSHING, DAMPER FLANGE (16-REQ'D)	029-18437-000
15	5		PIN, SLIDE (16-REQ'D)	029-18436-000
15	6		SEAL, DAMPER SIDE (4-REQ'D)	026-27629-000
15	7		SEAL, DAMPER GREY (10-REQ'D)	029-22117-000

P/E LINKAGE PARTS (MODULATING)

15	8		CRANKARM, ACTUATOR	029-22116-000
15	9		JOINT, BALL (2-REQ'D)	029-08786-000
15	10		BRACKET, DAMPER BLADE W/PIVOT (8-REQ'D)	029-18448-000
15	11		BRACKET, DAMPER BLADE W/PIVOT (4-REQ'D)	029-20068-000
15	12		PIVOT, BRASS (REPLACEMENT OF DBL. PIVOTS)	029-18439-000
15	13		CONN., PIVOT (REPLACEMENT OF DBL. PIVOTS)	029-18438-000

P/E DAMPER PARTS (NON-MODULATING)

*	14		DAMPER ASSY, BACKDRAFT 18-1/8" x 22" (2-REQ'D)	026-34753-000
2	-		TIMER, ANTI-SHORT CYCLE [TDR]	SEE ELEC. BOX

EXHAUST AIR DRIVE ADJUSTMENT

Use the following table and pitch diameter (PD) to select a new motor pulley/sheave (see page 16 for P/N's).
(Specified CFM / Measured CFM) x PD of standard motor pulley = PD of new motor pulley

30 AND 40 TON (EXHAUST AIR CFM ADJUSTMENT WITH MOTOR PULLEY REPLACEMENT)											
7.5 HP Motor & 852 RPM Drive				10 HP Motor & 976 RPM Drive				15 HP Motor & 1069 RPM Drive			
% RPM & CFM	Blower RPM	Req'd PD (in.)	Browning 2B5V ---	% RPM & CFM	Blower RPM	Req'd PD (in.)	Browning 2B5V ---	% RPM & CFM	Blower RPM	Req'd PD (in.)	Browning 2B5V ---
For slower blower speeds down to 550 RPM (65% of nominal), replace motor pulley and bushing with a Browning 2MVP35B49 x 1-3/8" P/N 028-13931-000				For slower blower speeds down to 550 RPM (56% of nominal), replace motor pulley and bushing with a Browning 2MVP35B49 x 1-3/8" P/N 028-13931-000				For slower blower speeds down to 630 RPM (59% of nominal), replace motor pulley and bushing with a Browning 2MVP40B54 x 1-5/8" P/N 028-13932-000			
89.1	759	4.9	46	81.0	790	5.1	48	76.8	821	5.3	50
92.7	790	5.1	48	84.1	821	5.3	50	79.7	852	5.5	52
96.4	821	5.3	50	87.3	852	5.5	52	82.6	883	5.7	54
100.0	852	(std) 5.5	52	90.5	883	5.7	54	85.5	914	5.9	56
103.6	883	5.7	54	93.7	914	5.9	56	88.4	945	6.1	58
107.3	914	5.9	56	96.8	945	6.1	58	91.3	976	6.3	60
110.9	945	6.1	58	100.0	976	(std) 6.3	60	94.2	1007	6.5	62
114.5	976	6.3	60	103.2	1007	6.5	62	97.1	1038	6.7	64
118.2	1007	6.5	62	106.4	1038	6.7	64	100.0	1069	(std) 6.9	66
				109.5	1069	6.9	66	102.9	1100	7.1	68
				112.7	1100	7.1	68	108.7	1131	7.3	70
				115.9	1131	7.3	70	117.4	1193	7.7	74

NOTE: Reuse the existing bushing when changing one Browning 2B5V pulley to another.



Heating and Air Conditioning



Proud Sponsor of the 1998 U.S. Olympic Team

SAMPLE MODEL NUMBER

Y 1 3 A N 2 4 B 1 A A C A B A

BREAK DOWN OF MODEL NUMBER FORMAT IN DIGITS

1 2 3 4 5 6 7 8 9 10 11 12 13 14 15

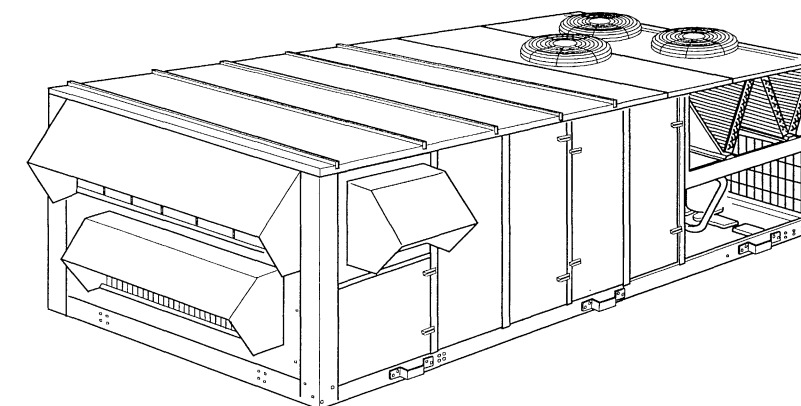
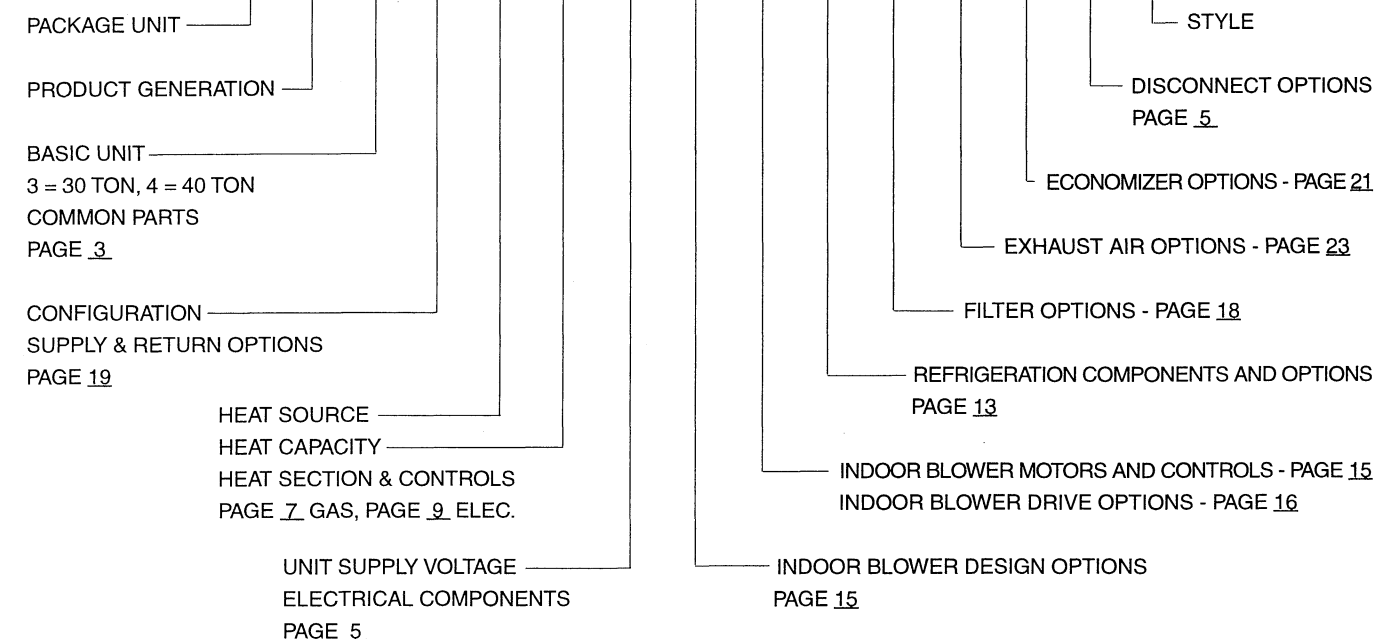


TABLE OF CONTENTS

	PAGE		PAGE
UNIT SECTIONS & COMMON PARTS	3	BLOWER DESIGN OPTIONS	15
ELECTRICAL COMPONENTS	5	BLOWER DRIVE OPTIONS	16
DISCONNECT OPTIONS	5	FILTER OPTIONS	18
GAS HEAT SECTION & CONTROLS	7	SUPPLY AND RETURN OPTIONS	19
ELEC-HEAT SECTION & CONTROLS	9	ECONOMIZER OPTIONS	21
REFRIGERATION COMPONENTS & OPTIONS	13	EXHAUST AIR OPTIONS	23
BLOWER MOTORS AND CONTROLS	15		

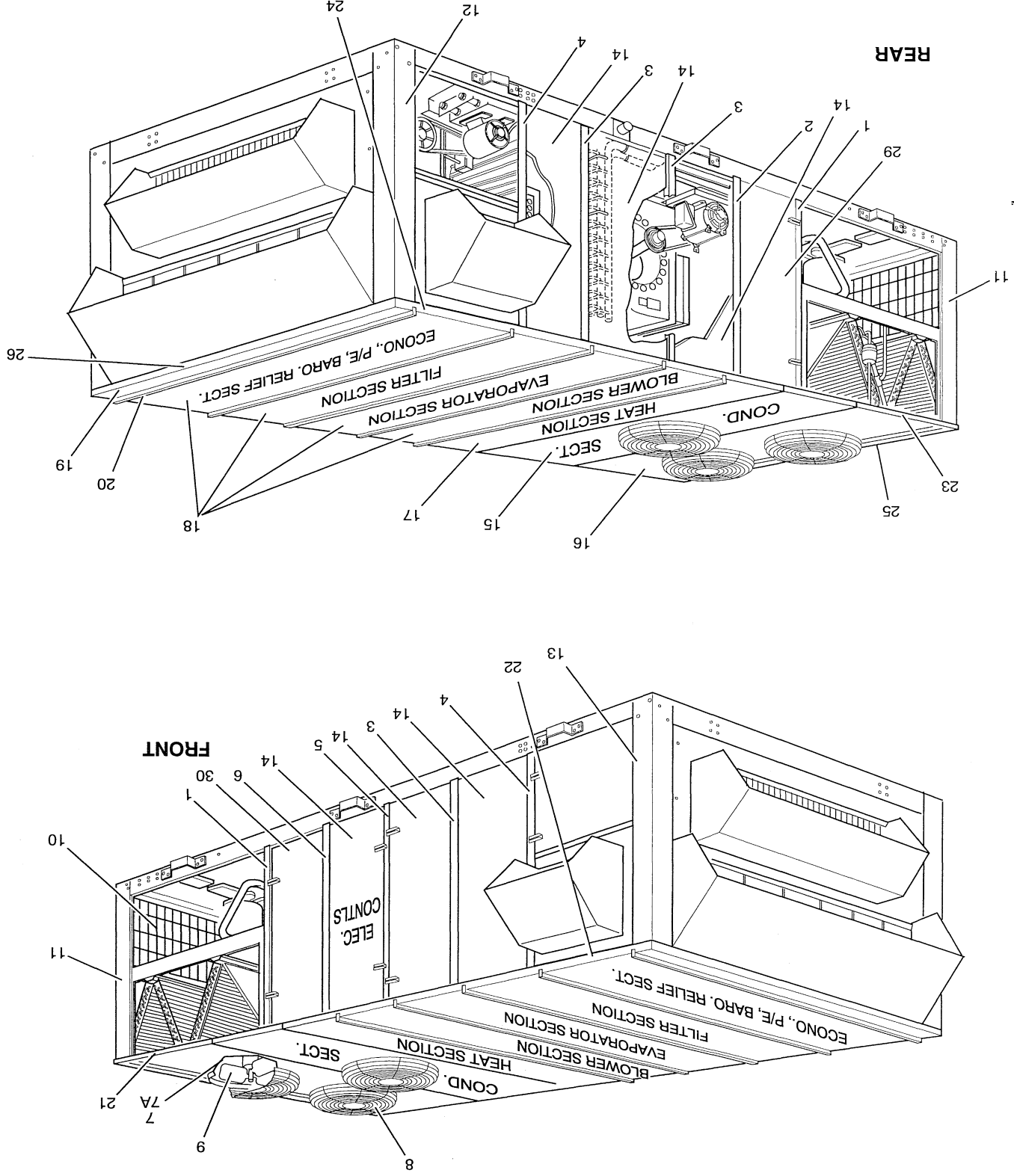


FIG. 1 - UNIT SECTIONS & COMMON PARTS
(30 TON SHOWN)

EXHAUST AIR OPTIONS (12TH MODEL NO. DIGIT)

OPTION INCLUDES		OPTION INCLUDES		OPTION INCLUDES		OPTION INCLUDES	
A	BAROMETRIC RELIEF	B	1,3	F	1,7	J	2,5
C	1,4	G	1,8	K	2,6	L	2,7
D	1,5	H	2,3	M	2,8		
E	1,6	I	2,4				
NO EXHAUST		MOTOR - STD. EFFICIENCY		MOTOR - HIGH EFFICIENCY			
1 = MODULATING DAMPERS		3 = 7.5 HP STANDARD		6 = 7.5 HP HI EFFICIENCY			
2 = NON-MODULATING DAMPERS		4 = 10 HP STANDARD		7 = 10 HP HI EFFICIENCY			
		5 = 15 HP STANDARD		8 = 15 HP HI EFFICIENCY			

FIG	ITEM	UNIT STYLE	DESCRIPTION	Y13 & 14	Y13 & 14	Y13 & 14
14	(70)		MOTOR, PWR, EXHST. (7.5 HP) STD. EFF.	024-25026-000	024-25026-000	024-25032-000
14	(70)		MOTOR, PWR, EXHST. (7.5 HP) HI - EFF.	024-25078-000	024-25078-000	024-25032-000
2	(71)	[10M]	STARTER, MTR. (FURNAS #16BF35AJAHJ)	024-27527-000	024-27527-000	024-27527-000
2	(71A)		STARTER ELEMENTS (OVERLOAD) (3-REQD)	024-19631-000	024-19631-000	024-26052-000
2	(72)		FUSE, DUAL	025-05741-000	025-05741-000	024-19415-000
2	(72A)		FUSEHOLDER, CRTG.	025-18283-000	025-18284-000	028-13274-000
14	73		PULLEY/SHEAVE 7.5 HP (PWR./EXHST. SHAFT)	028-13274-000	028-13274-000	028-13274-000
14	73A		BUSHING (1-11/16 BORE)	028-13278-000	028-13278-000	028-13278-000
14	74		PULLEY/SHEAVE 7.5 HP (PWR./EXHST. MOTOR)	028-13270-000	028-13270-000	028-13270-000
14	74A		BUSHING (1-3/8 BORE)	028-13275-000	028-13275-000	028-13275-000
14	75		"V" BELT 7.5 HP (B2) (2-REQD)	028-08781-000	028-08781-000	028-08781-000
14	(76)		MOTOR, PWR, EXHST. (10 HP) STD. EFF.	024-25025-000	024-25025-000	024-25031-000
14	(76)		MOTOR, PWR, EXHST. (10 HP) HI - EFF.	024-25079-000	024-25079-000	024-25031-000
2	(77)	[10M]	STARTER, MTR. (FURNAS #16CF35AJAHK)	024-27528-000	024-27528-000	024-27527-000
2	(77A)		STARTER ELEMENTS (OVERLOAD) (3-REQD)	024-19422-000	024-19422-000	024-26052-000
2	(78)		FUSE, DUAL	025-08436-000	025-08436-000	024-26052-000
2	(78A)		FUSEHOLDER, CRTG.	025-18283-000	025-18284-000	028-13274-000
14	79		PULLEY/SHEAVE 10 HP (PWR./EXHST. SHAFT)	028-13274-000	028-13274-000	028-13274-000
14	79A		BUSHING (1-11/16 BORE)	028-13278-000	028-13278-000	028-13278-000
14	80		PULLEY/SHEAVE 10 HP (PWR./EXHST. MOTOR)	028-13271-000	028-13271-000	028-13271-000
14	80A		BUSHING (1-3/8 BORE)	028-13275-000	028-13275-000	028-13275-000
14	81		"V" BELT 10 HP (B2) (2-REQD)	028-08781-000	028-08781-000	028-08781-000
14	(82)		MOTOR, PWR, EXHST. (15 HP) STD. EFF.	024-25024-000	024-25024-000	024-25030-000
14	(82)		MOTOR, PWR, EXHST. (15 HP) HI - EFF.	024-25080-000	024-25080-000	024-25030-000
2	(83)	[10M]	STARTER, MTR. (FURNAS #16DF35AJAHL)	024-27529-000	024-27529-000	024-27527-000
2	(83A)		STARTER ELEMENTS (OVERLOAD) (3-REQD)	024-25343-000	024-25343-000	024-27527-000
2	(84)	[19,20,21FU]	FUSE, DUAL	025-04650-000	025-04650-000	024-21045-000
2	84A		FUSEHOLDER, CRTG.	025-26395-000	025-26395-000	024-27527-000
14	85		PULLEY/SHEAVE 15 HP (PWR./EXHST. SHAFT)	028-13274-000	028-13274-000	028-13274-000
14	85A		BUSHING (1-11/16 BORE)	028-13278-000	028-13278-000	028-13278-000
14	86		PULLEY/SHEAVE 15 HP (PWR./EXHST. MOTOR)	028-12071-000	028-12071-000	028-12071-000
14	86A		BUSHING (1-3/8 BORE)	028-12082-000	028-12082-000	028-12082-000
14	87		"V" BELT 15 HP (B2) (2-REQD)	028-08781-000	028-08781-000	028-08781-000

COMMON P/E PARTS 30 & 40 TON

FIG	ITEM	UNIT STYLE	DESCRIPTION	Y13 & 14	Y13 & 14
14	88		BLOWER, DUAL	026-34671-000	026-34671-000
14	89		INCL. - (2) WHEELS, SHAFT, (2) BEARINGS, (2) HOUSINGS	025-16363-000	025-16363-000
14	90		BASE, MOTOR MOUNTING	073-16085-000	073-16085-000
*	91		MOTOR ADJ. SCR. (2-REQD) ALL-THREAD	5/8-11 x 8 LG.	5/8-11 x 8 LG.
14	(92)	[SSP1]	SWITCH, CONTROL BUILDING PRESSURE (MODULATING)	031-01281-000	031-01281-000
14	(92)	[SSP1]	SWITCH, CONTROL BUILDING PRESSURE (NON-MOD.)	024-27549-000	024-27549-000

* ITEM NOT SHOWN.

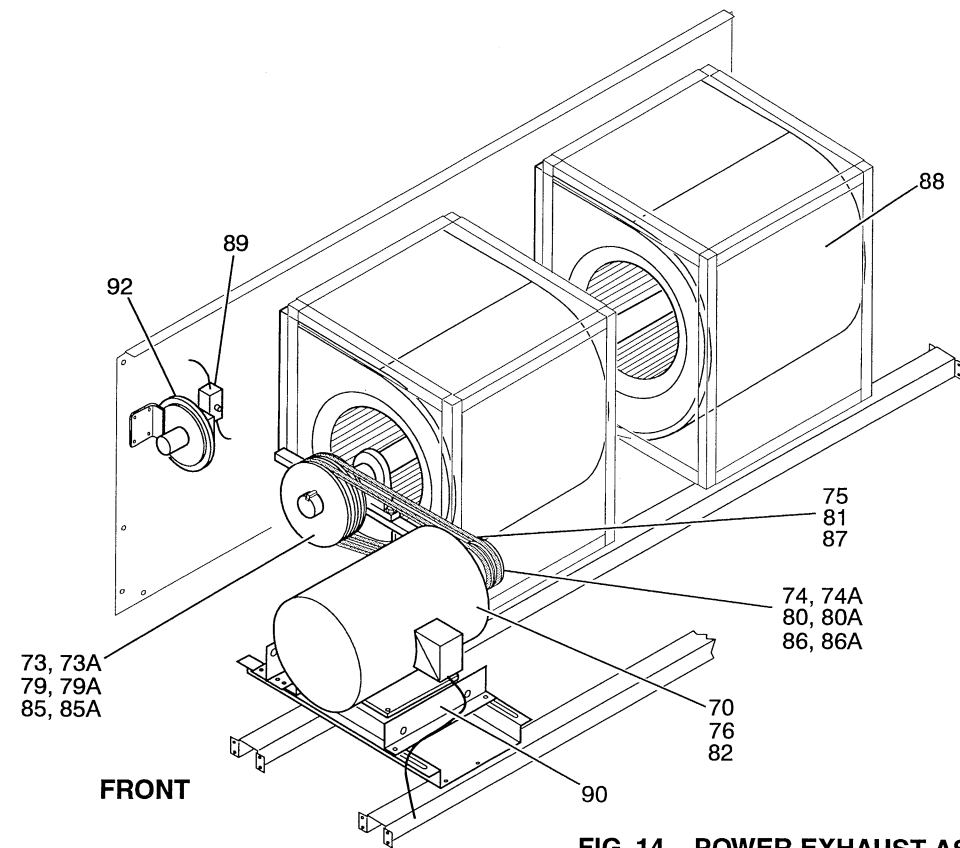


FIG. 14 - POWER EXHAUST ASS'Y

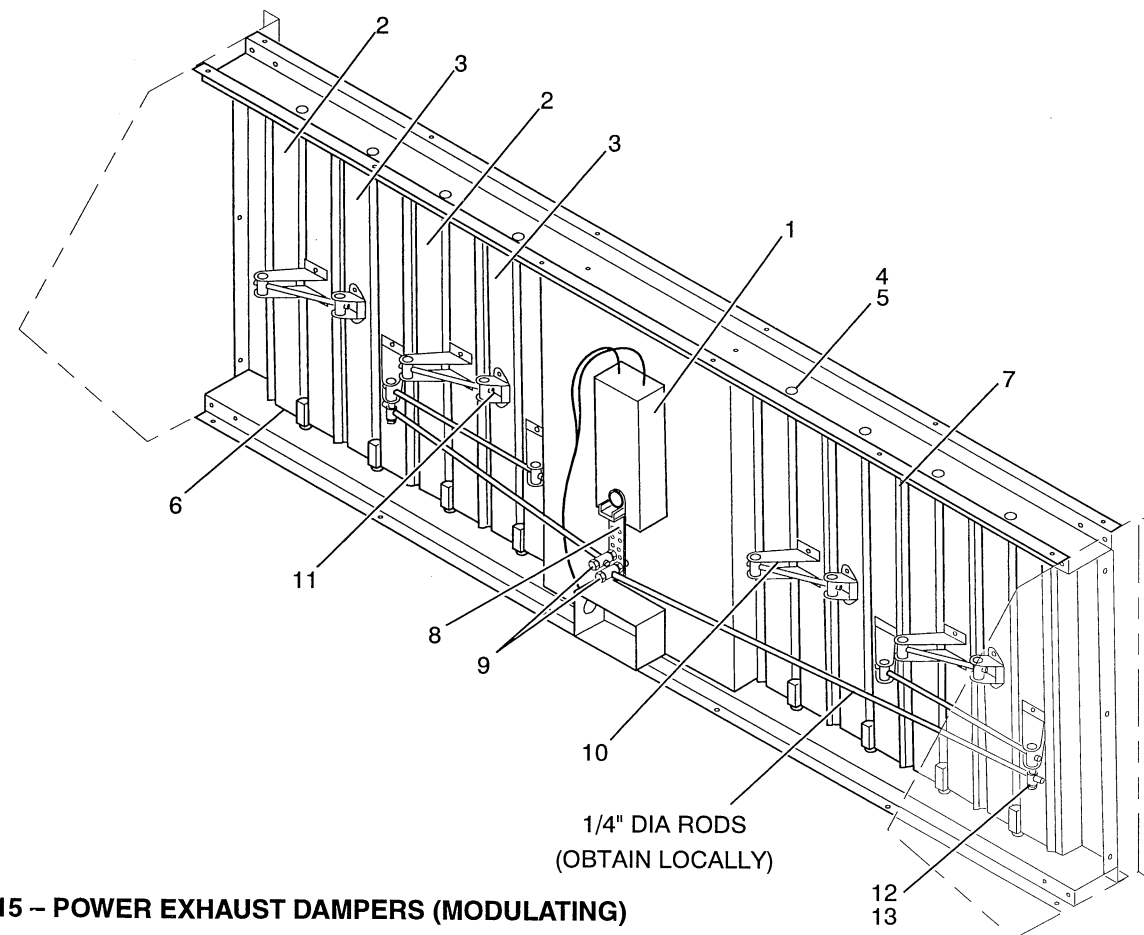


FIG. 15 - POWER EXHAUST DAMPERS (MODULATING)

COMMON PARTS

FIG	ITEM	UNIT STYLE	DESCRIPTION	Y13 & Y14 30 & 40 TON
1	1		CHANNEL, UPRIGHT (FRONT & REAR)	073-15240-000
1	2		CHANNEL, W/INSUL. & LINER (1-REQ'D - REAR)	373-16066-045
1	3		CHANNEL, W/INSUL. & LINER (3-REQ'D)	373-16066-047
1	4		CHANNEL, W/INSUL. & LINER (2-REQ'D - FRONT & REAR)	373-16066-049
1	5		CHANNEL, UPRIGHT (FRONT)	073-17078-000
1	6		CHANNEL, UPRIGHT (FRONT)	073-18639-000
1	7		MOUNT, MOTOR (WIREFORM)	026-34581-000
1	7A		CLAMP RING FOR MOTOR MOUNT	026-25568-000
1	8		GUARD, FAN	026-34562-000
1	9		BLADE, FAN	026-34698-000
1	10		GUARD, COIL (WIREFORM) (10-REQ'D, 3 FR. & REAR, 4 ON END)	026-34582-000
1	11		POST, CORNER (FRONT & REAR COMPRESSOR END)	073-15234-000
1	12		POST, CORNER P/E REAR	373-16066-051
1	13		POST, CORNER P/E FRONT	373-16066-053
1	14		DOOR, W/INSUL. & LINER (3 - FRONT - 3 - REAR)	373-16066-070
1	15		PANEL, ROOF (1 - FAN OPENING) 30 TON ONLY	073-15242-000
1	16		PANEL, ROOF (2 - FAN OPENINGS) 30 TON (1-REQ'D)	073-15243-000
1	16		PANEL, ROOF (2 - FAN OPENINGS) 40 TON (2-REQ'D)	073-15243-000
1	17		PANEL, ROOF (HEAT SECTION)	073-15905-000
1	18		PANEL, ROOF (4-REQ'D)	073-15906-000
1	19		PANEL, ROOF (P/E END)	073-15907-000
1	20		CHANNEL, ROOF JOINT W/GASKET (5-REQ'D)	373-16066-076
1	21		RAIL, TOP (FRONT - COMPRESSOR END)	073-15248-000
1	22		RAIL, TOP (FRONT - P/E END)	073-16138-000
1	23		RAIL, TOP (REAR - COMPRESSOR END)	073-15249-000
1	24		RAIL, TOP (REAR - P/E END)	073-16139-000
1	25		RAIL, TOP (SIDE - COMPRESSOR)	073-15236-000
1	26		RAIL, TOP (SIDE - P/E)	073-16140-000
*	27		GROMMET, PVC RED (1-3/8 ID. USE IN 2-3/8 HOLE)	028-04698-000
*	28		GROMMET, PVC RED (7/8 ID. USE IN 1-5/8 HOLE)	028-04859-000
1	29		PANEL, REAR, W/INSUL. & LINER	373-18607-006
1	30		PANEL, FRONT (ELEC. HEAT) W/INSUL., LINER, & HINGES	373-16198-067

DOOR HARDWARE

1A	40		KNOB, DOOR (PLASTIC W/1/4-20 THD. STUD)	029-22122-000
1A	41		TONGUE, DOOR LATCH SLIDE	029-22121-000
1A	42		BRACKET, LATCH	073-19226-000
1A	43		BRACKET, DOOR LATCH	073-19224-000
1A	44		PLATE, DOOR LATCH	073-19225-000
*	45		HINGE, DOOR 4"	073-18462-000
*	46		GASKET, STRIP 1/2 x 1.0 (ORDER BY FT.)	028-12049-000

* ITEM NOT SHOWN.

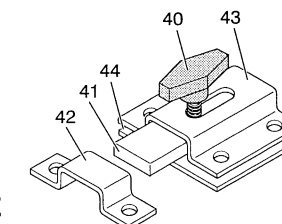


FIG. 1A - DOOR HARDWARE

ABBREVIATIONS:	CV - CONSTANT VOLUME	ECON. - ECONOMIZER
	VAV - VARIABLE AIR VOLUME	AF - AIR FOIL
	VFD - VARIABLE FREQUENCY DRIVE	FC - FORWARD CURVE
	P/E - POWER EXHAUST	IGV - INLET GUIDE VANES

New replacement parts shown in **bold face** type at the first printing of Parts List code dated 3/98. Major components and suggested stocking items are shown with item number in parenthesis "()". Items with UNIT STYLES not shown are unaffected by style changes.

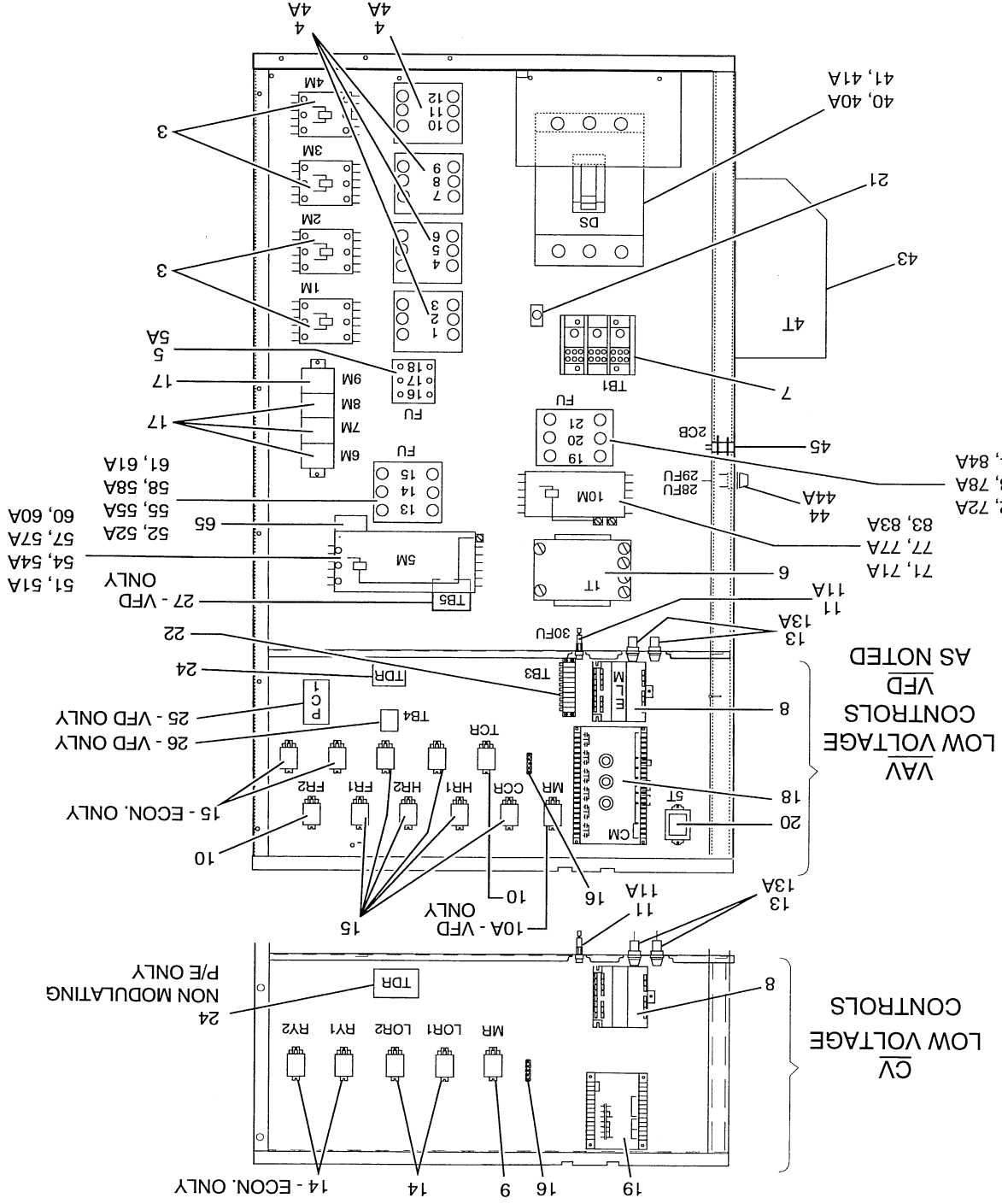


FIG. 2 - ELECTRICAL BOX

Unitary Products Group

ECONOMIZER OPTIONS (13TH MODEL NO. DIGIT)

FIG	ITEM	UNIT	STYLE	DESCRIPTION
Y13 & Y14				30 & 40 TON
373-15822-011				PANEL, DOOR W/INSUL. & LINER (2-REQ'D)

ECONOMIZER CONTROLS

*	(2)			CTL. ENTHALPY (SGL. & DUAL) (OUTSIDE AIR SENSOR) [OAS]
*	(3)			CTL. ENTHALPY (DUAL ONLY) (RETURN AIR SENSOR) [RAS]
*	4			SENSOR, DRY BULB
*	5			SENSOR, MIXED AIR TEMP.
			[MAT]	025-3267-000
				SEE ELEC. BOX

DAMPER PARTS

13	(6)			ACTUATOR, DAMPER (BELIMO) [ACT1]
13	7			BLADE, DAMPER (16-REQ'D) SINGLE PIVOT (1)
13	8			BLADE, DAMPER (4-REQ'D) DOUBLE PIVOT (2)
13	9			BUSHING, DAMPER FLANGE (40-REQ'D)
13	10			PIN, SLIDE (40-REQ'D)
13	11			SEAL, DAMPER BLADE (25-5/8 LG.) (8-REQ'D)
13	12			SEAL, DAMPER BLADE (38-1/2 LG.) (24-REQ'D)

LINKAGE PARTS

13	15			ARM, JACK-SHAFT (2-REQ'D)
13	16	*		JOINT, BALL (4-REQ'D)
13	17			BRACKET, DAMPER BLADE W/PIVOT (16-REQ'D)
13	18			BRACKET, DAMPER BLADE W/2 PIVOTS (4-REQ'D)
13	19	*		PIVOT, BRASS (REPLACEMENT OF DOUBLE PIVOT)
13	20	*		CONNECTOR, PIVOT (REPLACEMENT OF DOUBLE PIVOTS)
13	21	*		CLAMP LINKAGE (FOR 3/4" DIA. TUBE)
13	22			BUSHING, SNAP (JACKSHAFT)

DAMPER PARTS, MANUAL

13	25			REGULATOR, MANUAL DAMPER
13	26			BLADE, DAMPER (4-REQ'D) W/1-BRKT. & SEAL)
13	27			BLADE, DAMPER (2-REQ'D) W/2-BRKT.S. (1-DBL. PIVOT & SEAL)
13	28			BLADE, DAMPER (2-REQ'D) W/2 BRKT.S. & SEAL)
*	29			BUSHING, DAMPER FLANGE (16-REQ'D)
*	30			PIN, SLIDE (16-REQ'D)
13	31			SEAL, DAMPER BLADE (RETURN AIR SIDE) (4-REQ'D)
13	32			SEAL, DAMPER BLADE (38-1/2 LG.) (10-REQ'D)

LINKAGE PARTS, MANUAL

13	35			ARM CRANK, DAMPER LINK (2-REQ'D)
13	35A			PIVOT, LINKAGE (2-REQ'D)
13	36			BRACKET, DAMPER BLADE W/PIVOT (6-REQ'D)
13	37			BRACKET, DAMPER BLADE W/PIVOT (4-REQ'D)
13	38			BRACKET, DAMPER BLADE W/2 PIVOTS (2-REQ'D)
*	39			PIVOT, BRASS (REPLACEMENT OF DOUBLE PIVOT)
*	40			CONNECTOR, PIVOT (REPLACEMENT OF DOUBLE PIVOTS)

ECONOMIZER, MANUAL

13	45			PANEL, HOOD (TOP) 1-PER HOOD
12	46			PANEL, HOOD (L/H SIDE) LOOKING @ HOOD FRONT
12	47			PANEL, HOOD (R/H SIDE) LOOKING @ HOOD FRONT
*	48			PANEL, LOWER FILTER (1-PER HOOD)
*	49			ANGLE, LOWER FILTER (1-PER HOOD)
*	50			CHANNEL, UPPER FILTER (1-PER HOOD)
*	51			HINGE, HOOD 4" (2-PER HOOD)
*	52			FILTER, ALUMINUM MESH (2-PER HOOD)

FRONT & REAR HINGED ECONOMIZER HOODS (2-REQ'D) AUTOMATIC ECONOMIZER

12	53			PANEL, HOOD (TOP)
12	54			PANEL, HOOD (L/H SIDE) LOOKING @ HOOD FRONT
12	55			PANEL, HOOD (R/H SIDE) LOOKING @ HOOD FRONT
*	56			FILTER, ALUMINUM MESH (5-REQ'D)

END ECONOMIZER HOOD (1-REQ'D)

073-16145-000				026-08210-000
073-16146-000				026-08210-000
073-16150-000				026-08210-000
073-16149-000				026-08210-000
073-16148-000				026-08210-000
073-16152-000				026-08210-000
073-16153-000				026-08210-000
073-19227-000				026-08210-000
073-19227-000				026-08210-000

Unitary Products Group

ECONOMIZER OPTIONS (13TH MODEL NO. DIGIT)

A = DUAL INPUT ENTHALPY
 B = SINGLE INPUT ENTHALPY
 C = DRY BULB SENSOR
 D = MANUAL OPERATION
 E = NO ECONOMIZER

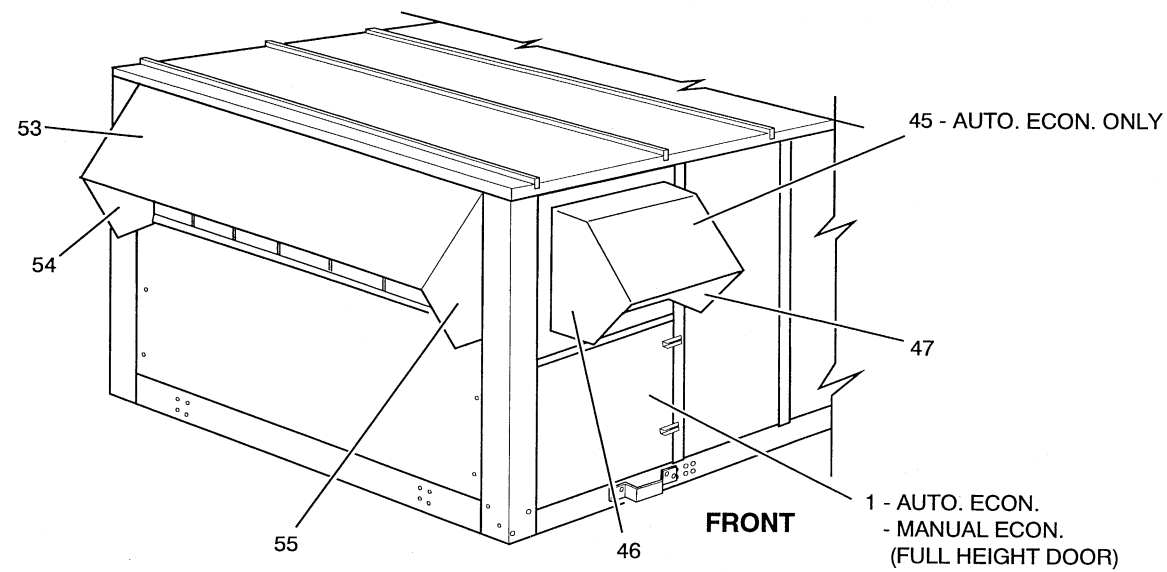


FIG. 12 - BOTTOM RETURN AIR W/ECONOMIZER

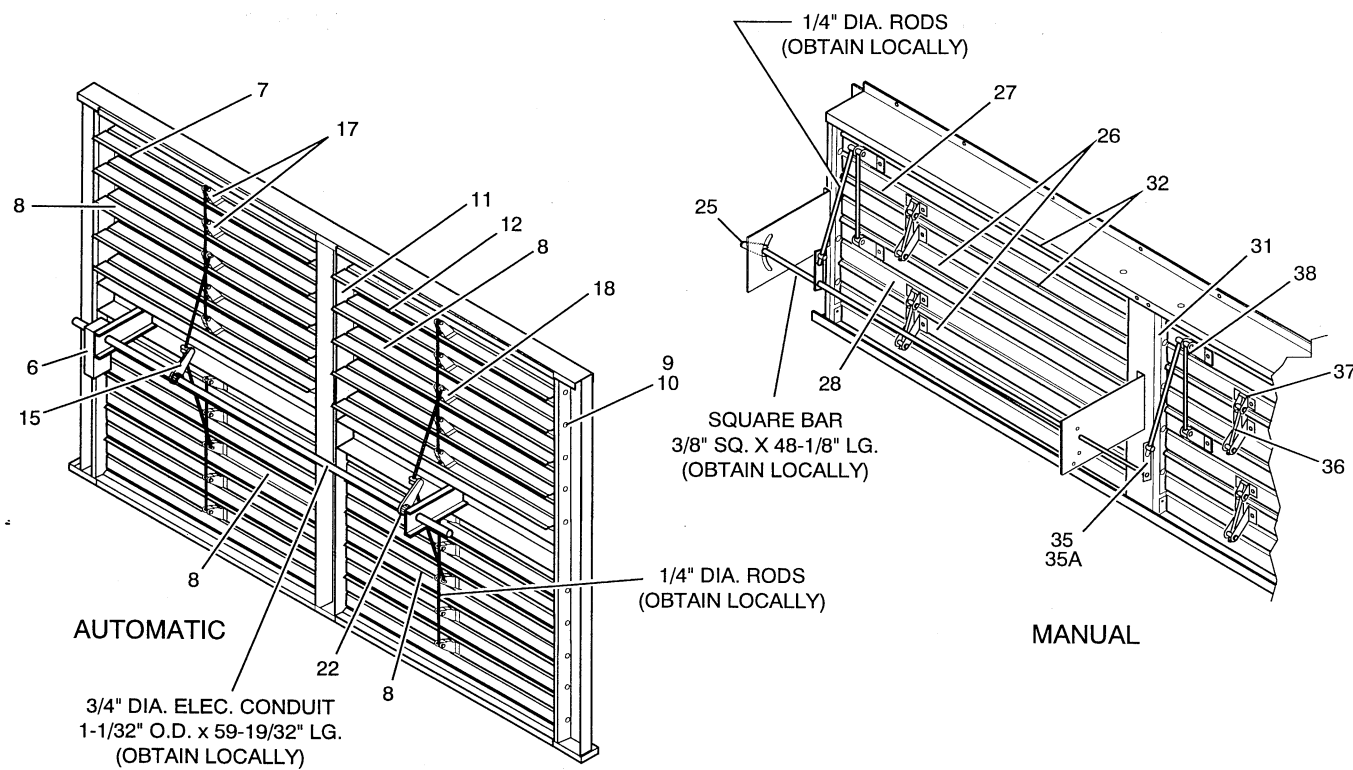


FIG. 13 - ECONOMIZER DAMPERS

ELECTRICAL COMPONENTS (7TH MODEL NO. DIGIT)

		VOLTAGE CODES				
		2= 208/230-3-60	4 = 460-3-60	5 = 575-3-60		
FIG	ITEM	UNIT STYLE	DESCRIPTION	Y13 & 14 208/230V	Y13 & 14 460V	Y13 & 14 575V
8	(1)		COMPR., HERMETIC (SCROLL) 30 TON SYS. 1, 2, 3	015-02917-004	015-02918-004	015-02919-004
8	(1)		COMPR., HERMETIC (SCROLL) 40 TON SYS. 1, 2, 3, 4	015-02917-004	015-02918-004	015-02919-004
*	1A		COMPR. PROTECTOR MODULE (1-PER COMPR.)	025-33361-000	025-33361-000	025-33361-000
*	(2)		MOTOR, FAN (3-REQ'D 30T, 4-REQ'D 40T)	024-24121-001	024-24121-001	024-24121-002
2	(3)		CONTACTOR, COMPRESSOR (30 TON) [1,2,3M]	024-25846-000	024-25955-000	024-25955-000
2	(3)		CONTACTOR, COMPRESSOR (40 TON) [1,2,3,4M]	024-25846-000	024-25955-000	024-25955-000
2	(4)		FUSE, DUAL (30 TON) [1 - 9FU], (40 TON) [1 - 12FU]	025-26336-000	025-12805-000	025-12804-000
2	4A		FUSEHOLDER, CRTG. (3-FUSES PER HOLDER)	025-18283-000	025-18284-000	025-18284-000
2	(5)		FUSE, DUAL (30 TON) [16,17,18FU]	025-09976-000	025-06079-000	025-05742-000
2	(5)		FUSE, DUAL (40 TON) [16,17,18FU]	025-26338-000	025-06079-000	025-05742-000
2	5A		FUSEHOLDER, CRTG. (30 & 40 TON)	025-18281-000	025-18284-000	025-18284-000
2	(6)		TRANSFORMER (30 & 40 TON) [1T]	025-32669-000	025-32669-000	025-32669-001
2	7		BLOCK, TERMINAL (30 & 40 TON) [TB1]	025-30110-000	025-20573-000	025-20573-000
2	8		MODULE, ECONOMIZER LOGIC [ELM]	031-01272-000	031-01272-000	031-01272-000
2	(9)		RELAY, CONTROL (BLOWER MOTOR) [MR]	024-24116-000	024-24116-000	024-24116-000
2	(10)		RELAY, CONTROL [TCR & FR2]	024-24116-000	024-24116-000	024-24116-000
2	(10A)		RELAY, CONTROL (VFD ONLY) [MR]	024-24116-000	024-24116-000	- - -
2	(11)		FUSE [30FU]	025-32727-002	025-32727-002	025-32727-002
2	11A		FUSEHOLDER	025-13991-000	025-13991-000	025-13991-000
*	12		LOCK-OUT, COMPR. (LOCATED IN COIL SECT.) [CLO1]	025-32680-000	025-32680-000	025-32680-000
2	(13)		FUSE, DUAL (30 & 40 TON) [22,23FU]	025-32730-001	025-27750-000	025-27750-000
2	13A		FUSEHOLDER, PANEL MOUNTED	025-17407-000	025-17407-000	025-17407-000
2	(14)		RELAY, CONTROL (30,40T W/ECON. 4-REQ'D) [LOR1,2] [RY1,2]	024-27542-000	024-27542-000	024-27542-000
2	(15)		RELAY, CONTROL (30,40T W/ECON. 8-REQ'D) [CCR] [HR1,2] [FR1] [LOR1,2] [RY1,2]	024-27542-000	024-27542-000	024-27542-000
2	16		BLOCK, TERMINAL (10-POLE) [TB2]	025-32615-000	025-32615-000	025-32615-000
2	(17)		CONTACTOR, COND. FAN (30 TON) [6,7,8M]	024-26051-000	024-26051-000	024-26051-000
2	(17)		CONTACTOR, COND. FAN (40 TON) [6,7,8,9M]	024-26051-000	024-26051-000	024-26051-000
2	18		CONTROL, UNIT (VAV) [CM]	025-32663-000	025-32663-000	025-32663-000
2	19		CONTROL, UNIT (CV) [CM]	025-32664-000	025-32664-000	025-32664-000
2	(20)		TRANSFORMER [5T]	025-32699-000	025-32699-000	025-32699-000
2	21		LUG, ELECTRIC	025-19282-000	025-19282-000	025-19282-000
2	22		BLOCK, TERMINAL [TB3]	025-16100-000	025-16100-000	025-16100-000
*	23		RESISTOR (CONNECT CM-Y TO CM-9 ON VAV)	510 Ohms	510 Ohms	510 Ohms
2	24		TIMER, ANTI-SHORT CYCLE (NON-MOD. P/E) [TDR]	031-00829-000	031-00829-000	031-00829-000
2	25		CONTROL, DUCT, PRESS. (VFD ONLY) [PC1]	031-01273-000	031-01273-000	- - -
2	26		BLOCK, TERMINAL (VFD ONLY) [TB4]	025-08979-000	025-08979-000	- - -
2	27		BLOCK, TERMINAL (VFD ONLY) [TB5]	025-30727-000	025-30727-000	- - -

* ITEM NOT SHOWN.

DISCONNECT OPTIONS (14TH MODEL NO. DIGIT)

A = NO DISCONNECT B = STD. DISCONNECT W/CONVENIENCE OUTLET C = STD. DISCONNECT W/O CONVENIENCE OUTLET

FIG	ITEM	UNIT STYLE	DESCRIPTION	Y13 & 14 208/230V	Y13 & 14 460V	Y13 & 14 575V
2	40		SWITCH, DISCONNECT (250A)	025-32677-000	025-32677-000	025-32677-000
2	40A		DISCONNECT HANDLE & OPERATOR (250A)	025-32679-250	025-32679-250	025-32679-250
2	41		SWITCH, DISCONNECT (400A)	025-32678-000	025-32678-000	025-32678-000
2	41A		DISCONNECT HANDLE & OPERATOR (400A)	025-32679-400	025-32679-400	025-32679-400
*	42		OUTLET, CONVENIENCE	025-31987-000	025-31987-000	025-31987-000
*	42A		COVER, SWITCH (PLASTIC)	025-32675-000	025-32675-000	025-32675-000
2	43		TRANSFORMER [4T]	025-32672-240	025-26305-000	025-30383-000
2	44		FUSE (2-REQ'D) [28,29 FU]	025-32733-001	025-32732-001	025-32732-001
2	44A		FUSEHOLDER (2-REQ'D)	025-17407-000	025-17407-000	025-17407-000
2	45		CIRCUIT BREAKER	024-27517-000	024-27517-000	024-27517-000

* ITEM NOT SHOWN.

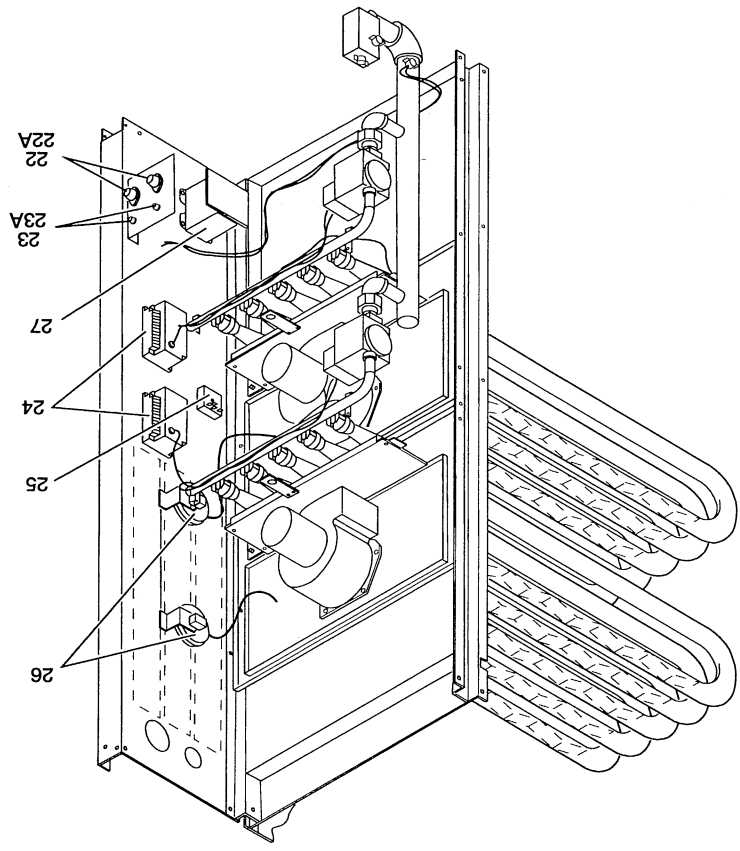
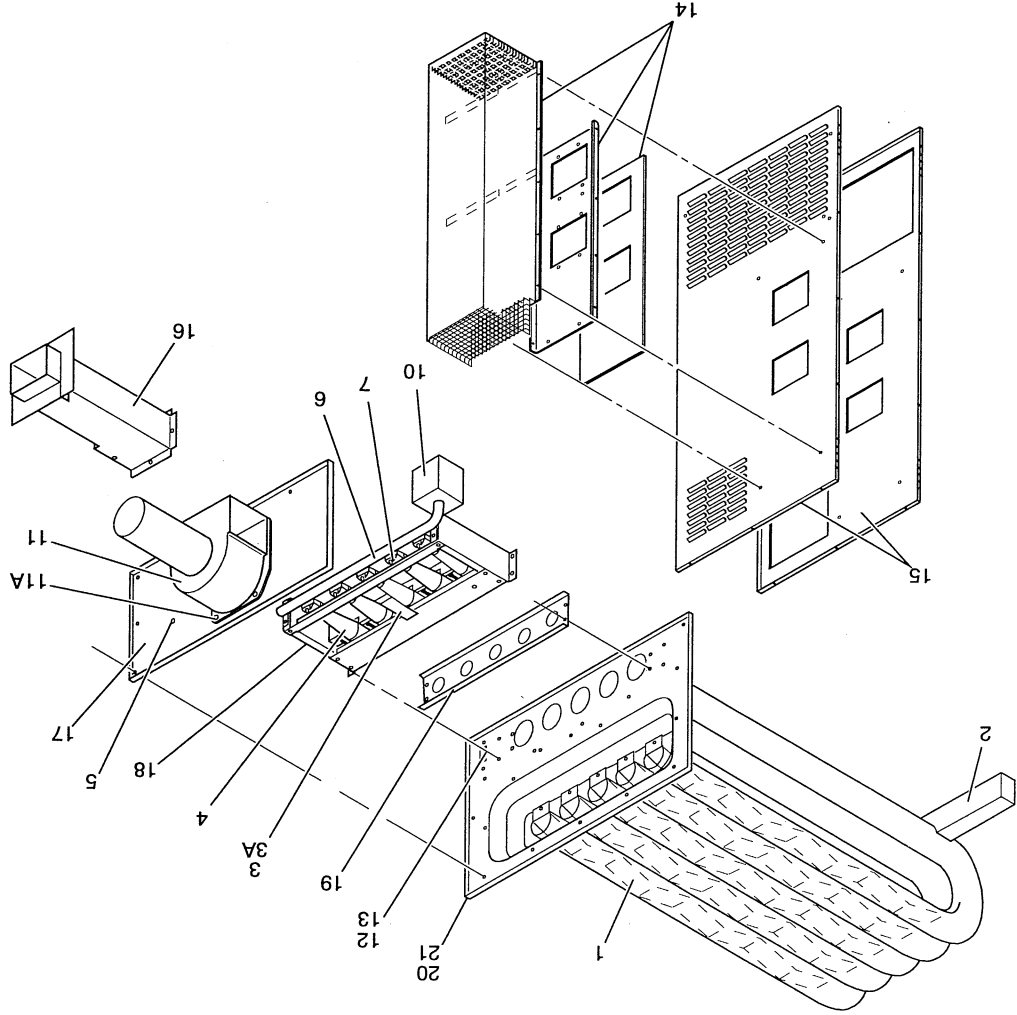


FIG. 3 - HEAT EXCHANGER & FLUE VENT ASSY.



SUPPLY AND RETURN OPTIONS (4TH MODEL NO. DIGIT)

CONFIGURATION	1 = BOTTOM RETURN		3 = END RETURN		5 = FRONT SUPPLY	
	OPTION	INCLUDES	OPTION	INCLUDES	OPTION	INCLUDES
A	1, 2		C	1, 5	E	3, 4
B	1, 4		D	3, 2	F	3, 5

NOTES: 1. FRONT SUPPLY ON COOLING ONLY UNITS.
2. ELECTRIC HEAT OPTIONS WITH BOTTOM SUPPLY ONLY.
3. GAS HEAT OPTIONS WITH BOTTOM OR REAR SUPPLY.

FIG	ITEM	UNIT	DESCRIPTION	Y13 & Y14	30 & 40 TON
11	1		DOOR, FRONT/REAR W/INSUL. & LINER (2-REQ'D)	373-18702-001	
11	2		PANEL, UPPER W/INSUL. & LINER	373-18702-003	
11	3		PANEL, LOWER W/INSUL. & LINER	373-18704-001	

POWER EXHAUST OR BAROMETRIC RELIEF HOOD

11	4		PANEL, HOOD (TOP)	073-16154-000
11	5		PANEL, HOOD (L/H SIDE) LOOKING @ HOOD FRONT	073-16155-000
11	6		PANEL, HOOD (R/H SIDE) LOOKING @ HOOD FRONT	073-16156-000
11	7		PANEL, HOOD (BOTTOM)	073-16157-000
11	8		PANEL, EXHAUST W/INSUL. & LINER	373-18703-001

BOTTOM RETURN - WITH BAROMETRIC RELIEF

11	9		DAMPER ASS'Y, BACKDRAFT 18-1/8" x 48"	026-34680-000
----	---	--	---------------------------------------	---------------

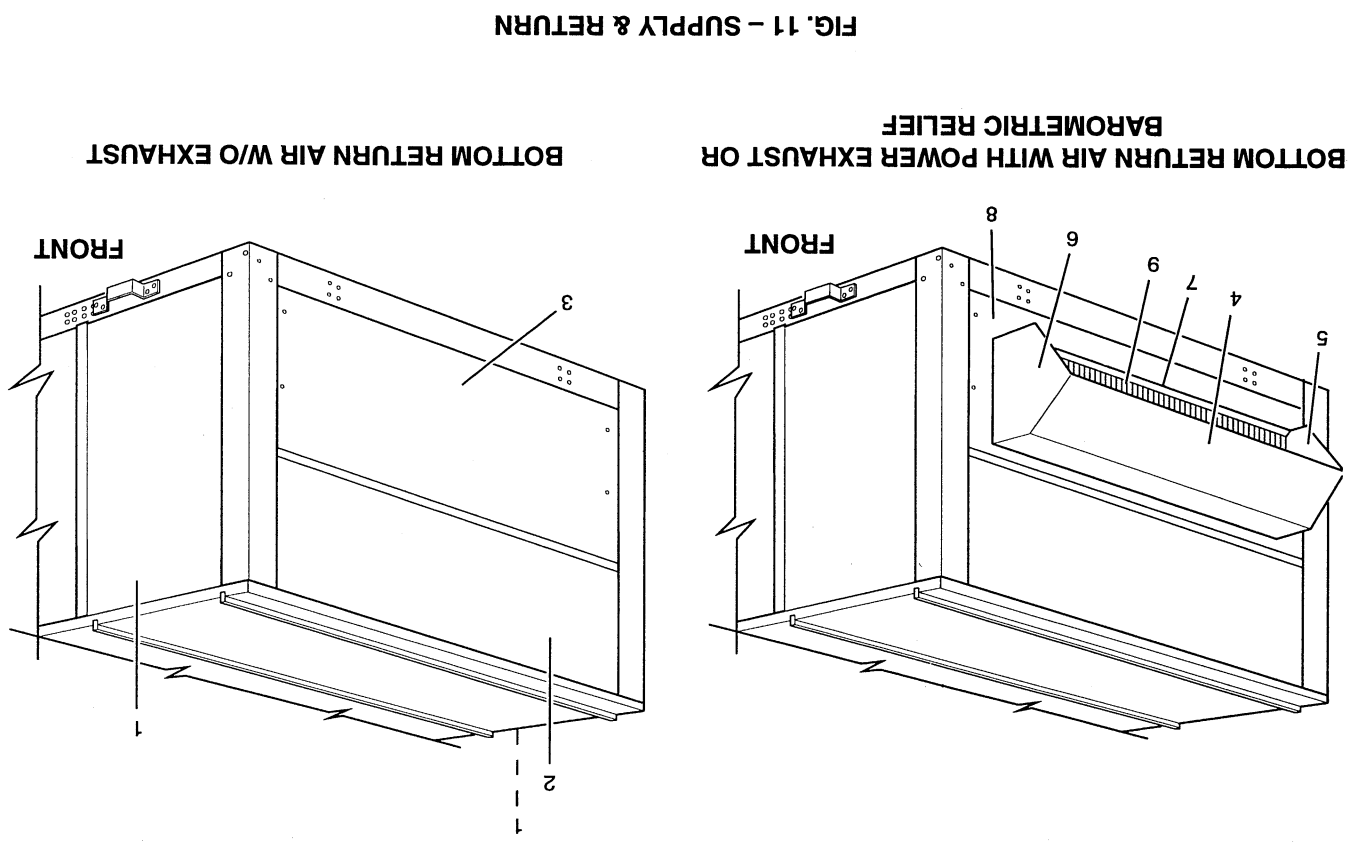


FIG. 11 - SUPPLY & RETURN

FILTER OPTIONS (11TH MODEL NO. DIGIT)

A = STANDARD B = 65% EFFICIENCY C = 95% EFFICIENCY D = HIGH EFFICIENCY

NOTE: 10 FILTERS REQ'D PER UNIT.

FIG	ITEM	UNIT STYLE	FILTER OPTIONS	DESCRIPTION	Y13 & 14 30 & 40 TON
*	1A		A	FILTER, 2" STANDARD (4-REQ'D)	2 x 16 x 25
*	1B		A	FILTER, 2" STANDARD (6-REQ'D)	2 x 20 x 25
*	2A		B	FILTER, 6" - 65% (4-REQ'D)	6 x 16 x 25
*	2B		B	FILTER, 6" - 65% (6-REQ'D)	6 x 20 x 25
*	3A		C	FILTER, 6" - 95% (4-REQ'D)	6 x 16 x 25
*	3B		C	FILTER, 6" - 95% (6-REQ'D)	6 x 20 x 25
*	4A		D	FILTER, 2" PLEATED (4-REQ'D)	2 x 16 x 25
*	4B		D	FILTER, 2" PLEATED (6-REQ'D)	2 x 20 x 25

GAS HEAT SECTION & CONTROLS (5TH & 6TH MODEL NO. DIGIT)

HEAT SOURCE	HEAT CAPACITY	HEAT SOURCE	HEAT CAPACITY
N = NATURAL GAS	2 = 233 MBH	W = HOT WATER	1 = XXXX
S = NATURAL GAS*	4 = 466 MBH		2 = XXX
	7 = 700 MBH		2 = XXX
			3 = XXX

E = ELECTRIC HEAT	4 = 40 KW	C = COOLING ONLY	0 = NO HEAT**
	8 = 80 KW		
	1 = 108 KW		

* Includes stainless steel heat exchanger.

** Refer to common parts for panel/door.

FIG	ITEM	UNIT STYLE	DESCRIPTION	Y13 & Y14 208/230V 5 & 10-BURNER	Y13 & Y14 460V 5 & 10-BURNER	Y13 & Y14 575V 5 & 10-BURNER
3	1		BAFFLE, HEAT EXCH.TUBE (1-PER TUBE)	073-16178-000	073-16178-000	073-16178-000
3	2		SUPPORT, HEAT EXCH. TUBE (2-REQ'D - 466 MBH)	073-16053-000	073-16053-000	073-16053-000
3	3		BRACKET, ROLLOUT SWITCH (2-REQ'D-466 MBH)	073-17161-000	073-17161-000	073-17161-000
3	(3A)		SWITCH, ROLLOUT (2-REQ'D-466 MBH) [RS-1,2]	025-27747-003	025-27747-003	025-27747-003
3	4		BURNER, GAS (1 - PER BURNER)	029-22115-000	029-22115-000	029-22115-000
3	5		FITTING, AIR PRESSURE TAP (2-REQ'D - 466 MBH)	023-16881-000	023-16881-000	023-16881-000
3	6		MANIFOLD, GAS (2-REQ'D-466 MBH)	029-21176-000	029-21176-000	029-21176-000
3	7		ORIFICE, BURNER #30 (1-PER BURNER)	029-20423-030	029-20423-030	029-20423-030
*	(8)		IGNITOR (2-REQ'D-466 MBH)	025-32661-002	025-32661-002	025-32661-002
*	(9)		SENSOR, FLAME (2-REQ'D-466 MBH)	025-32661-001	025-32661-001	025-32661-001
3	(10)		VALVE, GAS (2-REQ'D-466 MBH) WHITE RODGERS	025-32695-000	025-32695-000	025-32695-000
3	11		VENTOR BLOWER ASSEMBLY (1) (2-REQ'D - 466 MBH)	024-27516-000	024-27516-000	024-27516-000
3	11A		GASKET, VENTOR (2-REQ'D-466 MBH)	028-13291-000	028-13291-000	028-13291-000
3	(12)		SWITCH, LIMIT (233 MBH - 1-REQ'D) 30TON [LS-1]	025-30861-000	025-30861-000	025-30861-000
3	(12)		SWITCH, LIMIT (233 MBH - 1-REQ'D) 40TON [LS-1]	025-32700-000	025-32700-000	025-32700-000
3	(13)		SWITCH, LIMIT (466 MBH - 2-REQ'D) 30TON [LS-1,2]	025-32706-000	025-32706-000	025-32706-000
3	(13)		SWITCH, LIMIT (466 MBH - 2-REQ'D) 40TON [LS-1,2]	025-32700-000	025-32700-000	025-32700-000
3	14		FLUE VENT ASS'Y (233 & 466 MBH)	373-16198-046	373-16198-046	373-16198-046
3	15		DOOR ASS'Y GAS HEAT (233 & 466 MBH)	373-16198-035	373-16198-035	373-16198-035
3	16		FLUE DUCT ASS'Y (2-REQ'D - 466 MBH)	373-16198-007	373-16198-007	373-16198-007
3	17		RESTRICTOR PLATE ASS'Y (2-REQ'D - 466 MBH)	373-16198-002	373-16198-002	373-16198-002
3	18		BURNER FRAME ASS'Y (2-REQ'D - 466 MBH)	373-16198-003	373-16198-003	373-16198-003
3	19		SHOOT-THRU PLATE W/GSKT. (2-REQ'D - 466 MBH)	373-16198-004	373-16198-004	373-16198-004
3	20		HEAT EXCH. ASS'Y W/BAFFLES (2-REQ'D - 466 MBH)	373-16198-001	373-16198-001	373-16198-001
3	21		S. ST. HEAT EXCH. ASS'Y W/BAFFLES (2-REQ'D - 466 MBH)	373-16198-051	373-16198-051	373-16198-051
4	(22)		FUSE (2-REQ'D) (233 & 466 MBH) [24,25FU]	025-32730-001	025-32730-001	025-32729-001
4	22A		FUSEHOLDER (2-REQ'D) (233 & 466 MBH)	025-17407-000	025-17407-000	025-17407-000
4	(23)		FUSE (2-REQ'D) (233 & 466 MBH) [26,27FU]	---	025-21113-000	025-21113-000
4	23A		FUSEHOLDER (2-REQ'D) (233 & 466 MBH)	---	025-13991-000	025-13991-000
4	(24)		IGNITION, MODULE (233 & 466 MBH) [IC1,2]	031-01283-000	031-01283-000	031-01283-000
4	(25)		RELAY, CONTROL (233 & 466 MBH) [BR-1]	024-24116-000	024-24116-000	024-24116-000
4	(26)		SWITCH, PRESSURE [PS1 OR PS2]	024-25975-000	024-25975-000	024-25975-000
4	(27)		TRANSFORMER (233 & 466 MBH) [2T]	---	025-26309-000	025-30886-000

(1) INCLUDES MOTOR, WHEEL, & HOUSING.
* ITEM NOT SHOWN.

FOR FIELD INSTALLED ACCESSORIES SEE THE FOLLOWING PARTS LISTS:

ACCESSORIES - NON-ELECTRICAL

DESCRIPTION	MODEL NO.	NOTE:
NATURAL TO LP CONVERSION KIT	1NP0436	233 MBH - 1 KIT REQ'D
HIGH ALTITUDE KIT FOR NAT. GAS	1HA0417	466 MBH - 2 KITS REQ'D
HIGH ALTITUDE KIT FOR LP GAS	1HA0418	700 MBH - 3 KITS REQ'D
LP TO NATURAL CONVERSION KIT	1PN0437	

New replacement parts shown in **bold face** type at the first printing of Parts List code dated 3/98.
Major components and suggested stocking items are shown with item number in parenthesis "()".
Items with UNIT STYLES not shown are unaffected by style changes.

ELEC. HEAT SECTION & CONTROLS (5TH & 6TH MODEL NO. DIGIT)

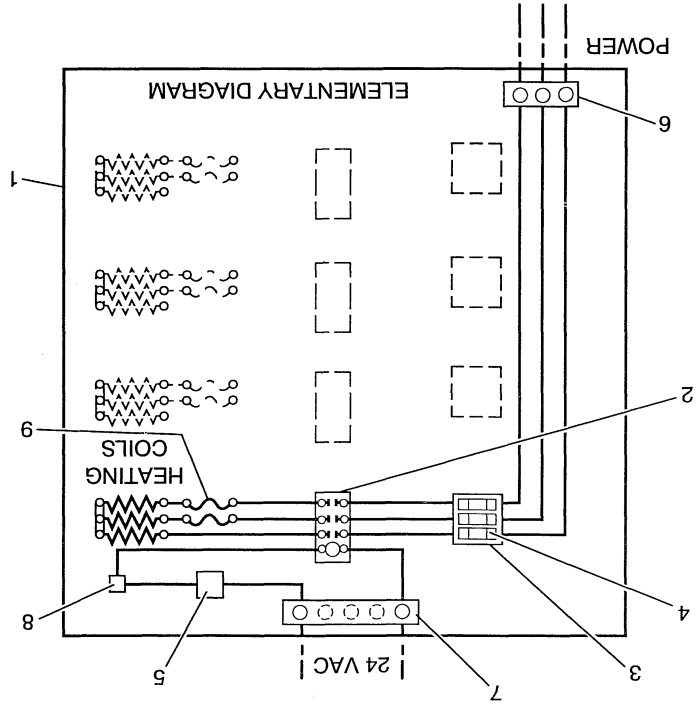


FIG. 5 - ELEC. HEAT CONTROLS

40 KW HEAT

FIG	ITEM	UNIT	DESCRIPTION	240V	480V	575V
5	1		ELECTRIC HEAT UNIT 40 KW W/CONTROLS	025-32647-000	025-32648-040	025-32649-040
5	2		CONTACTORS (2-REQ'D)	024-30908-000	---	---
5	2		CONTACTOR (1-REQ'D)	025-33741-000	---	---
5	3		FUSE BLOCK (2-REQ'D)	025-33741-000	---	---
5	3		FUSE BLOCK (1-REQ'D)	025-33747-000	---	---
5	4		FUSES, 60A (6-REQ'D)	025-33742-000	---	---
5	4		FUSES, 60A (3-REQ'D)	025-33748-000	---	---
5	5		SWITCH, AIR FLOW	025-33743-000	025-33743-000	025-33743-000
5	6		TERMINAL BLOCK, POWER VOLTAGE	025-33744-000	025-33744-000	025-33744-000
5	7		TERMINAL BLOCK, CONTROL VOLTAGE	025-33745-000	025-33745-000	025-33745-000
5	8		CONTROL, PRIMARY LIMIT TEMP. (1-REQ'D) (2)	025-32774-000	---	---
5	8		CONTROL, PRIMARY LIMIT TEMP. (1-REQ'D) (1)	025-32773-000	---	---
5	9		CONTROL, BACKUP LIMIT TEMP. (4-REQ'D) (5)	025-32777-000	---	---
5	9		CONTROL, BACKUP LIMIT TEMP. (2-REQ'D) (4)	025-32776-000	---	---
5	9		CONTROL, BACKUP LIMIT TEMP. (2-REQ'D) (3)	025-32775-000	---	---

80 KW HEAT

5	1		ELECTRIC HEAT UNIT 80 KW W/CONTROLS	025-32647-080	025-32648-080	025-32649-080
5	2		CONTACTORS (4-REQ'D)	024-30908-000	---	---
5	2		CONTACTORS (2-REQ'D)	024-30908-000	---	---
5	3		FUSE BLOCK (4-REQ'D)	025-33741-000	---	---
5	3		FUSE BLOCK (2-REQ'D)	025-33747-000	---	---
5	4		FUSES, 60A (12-REQ'D)	025-33742-000	---	---
5	4		FUSES, 60A (6-REQ'D)	025-33748-000	---	---
5	5		SWITCH, AIR FLOW	025-33743-000	025-33743-000	025-33743-000
5	6		TERMINAL BLOCK, POWER VOLTAGE	025-33744-000	025-33744-000	025-33744-000
5	7		TERMINAL BLOCK, CONTROL VOLTAGE	025-33746-000	025-33746-000	025-33746-000
5	8		CONTROL, PRIMARY LIMIT TEMP. (1-REQ'D) (1)	025-32773-000	---	---
5	8		CONTROL, PRIMARY LIMIT TEMP. (1-REQ'D) (2)	025-32774-000	---	---
5	9		CONTROL, BACKUP LIMIT TEMP. (4-REQ'D) (7)	025-32779-000	---	---
5	9		CONTROL, BACKUP LIMIT TEMP. (8-REQ'D) (6)	025-32778-000	---	---
5	9		CONTROL, BACKUP LIMIT TEMP. (4-REQ'D) (6)	025-32778-000	---	---

Unitary Products Group

NOTE: Reuse the existing bushing when changing one Browning 2B5V pulley to another.

10 HP Motor & 758 RPM Drive		15 HP Motor & 868 RPM Drive		20 HP Motor & 966 RPM Drive		25 HP Motor & 1,050 RPM Drive	
% RPM & CFM	Req'd Blower RPM	% RPM & CFM	Req'd Blower RPM	% RPM & CFM	Req'd Blower RPM	% RPM & CFM	Req'd Blower RPM
118.2	896	118.2	896	118.2	896	118.2	896
114.5	868	112.7	978	112.7	978	114.5	868
110.9	840	109.5	951	109.5	951	110.9	840
107.3	813	106.4	923	106.4	923	107.3	813
103.6	785	103.2	896	103.2	896	103.6	785
100.0	758	100.0	868	100.0	868	100.0	758
96.4	730	96.8	840	96.8	840	96.4	730
92.7	703	93.7	813	93.7	813	92.7	703
89.1	675	90.5	785	90.5	785	89.1	675
		87.3	758	87.3	758		
		84.1	730	84.1	730		
		81.0	703	81.0	703		
		77.8	675	77.8	675		
		74.8	648	74.8	648		
		71.0	621	71.0	621		
		68.1	594	68.1	594		
		65.3	567	65.3	567		
		62.5	540	62.5	540		
		59.7	513	59.7	513		
		56.9	486	56.9	486		
		54.1	459	54.1	459		
		51.3	432	51.3	432		
		48.5	405	48.5	405		
		45.7	378	45.7	378		
		42.9	351	42.9	351		
		40.1	324	40.1	324		
		37.3	297	37.3	297		
		34.5	270	34.5	270		
		31.7	243	31.7	243		
		28.9	216	28.9	216		
		26.1	189	26.1	189		
		23.3	162	23.3	162		
		20.5	135	20.5	135		
		17.7	108	17.7	108		
		14.9	81	14.9	81		
		12.1	54	12.1	54		
		9.3	27	9.3	27		
		6.5	0	6.5	0		

For slower blower speeds down to 490 RPM (65% of nominal), replace motor pulley and bushing with a Browning 2MVP35B49 x 1-3/8" P/N 028-13931-000

For slower blower speeds down to 560 RPM (65% of nominal), replace motor pulley and bushing with a Browning 2MVP40B54 x 1-5/8" P/N 028-13932-000

NOTE: Reuse the existing bushing when changing one Browning 2B5V pulley to another.

10 HP Motor & 667 RPM Drive		15 HP Motor & 768 RPM Drive		20 HP Motor & 830 RPM Drive		25 HP Motor & 881 RPM Drive	
% RPM & CFM	Req'd Blower RPM	% RPM & CFM	Req'd Blower RPM	% RPM & CFM	Req'd Blower RPM	% RPM & CFM	Req'd Blower RPM
118.9	793	118.9	793	118.9	793	118.9	793
115.1	768	113.1	869	113.1	869	115.1	768
111.3	743	109.8	844	109.8	844	111.3	743
107.5	717	106.6	818	106.6	818	107.5	717
103.8	692	103.3	793	103.3	793	103.8	692
100.0	667	100.0	768	100.0	768	100.0	667
96.2	642	96.7	743	96.7	743	96.2	642
		93.4	717	93.4	717		
		90.2	692	90.2	692		
		86.9	667	86.9	667		
		83.6	642	83.6	642		
		80.3	617	80.3	617		
		77.5	592	77.5	592		
		74.7	567	74.7	567		
		71.9	542	71.9	542		
		69.1	517	69.1	517		
		66.3	492	66.3	492		
		63.5	467	63.5	467		
		60.7	442	60.7	442		
		57.9	417	57.9	417		
		55.1	392	55.1	392		
		52.3	367	52.3	367		
		49.5	342	49.5	342		
		46.7	317	46.7	317		
		43.9	292	43.9	292		
		41.1	267	41.1	267		
		38.3	242	38.3	242		
		35.5	217	35.5	217		
		32.7	192	32.7	192		
		29.9	167	29.9	167		
		27.1	142	27.1	142		
		24.3	117	24.3	117		
		21.5	92	21.5	92		
		18.7	67	18.7	67		
		15.9	42	15.9	42		
		13.1	17	13.1	17		
		10.3	0	10.3	0		

For slower blower speeds down to 450 RPM (68% of nominal), replace motor pulley and bushing with a Browning 2MVP35B49 x 1-3/8" P/N 028-13931-000

For slower blower speeds down to 515 RPM (67% of nominal), replace motor pulley and bushing with a Browning 2MVP40B54 x 1-5/8" P/N 028-13932-000

Unitary Products Group

INDOOR BLOWER DRIVE OPTIONS (ASSOCIATED WITH 9TH MODEL NO. DIGIT)

	FIG	ITEM	UNIT STYLE	DESCRIPTION	Y13 30 TON	Y14 40 TON
10 HP	10	20		PULLEY/SHEAVE 10 HP (BLOWER)	028-12307-000	028-13273-000
	10	20A		BUSHING (2-3/16 BORE)	028-12338-000	- - -
	10	20A		BUSHING (2-7/16 BORE)	- - -	028-12306-000
	10	21		PULLEY/SHEAVE 10 HP (MOTOR)	028-13270-000	028-13269-000
	10	21A		BUSHING (1-3/8 BORE)	028-13275-000	028-13275-000
	10	22		"V" BELT (BX 55) (2-REQ'D)	028-12367-000	- - -
15 HP	10	22		"V" BELT (BX 68) (2-REQ'D)	- - -	028-10382-000
	10	23		PULLEY/SHEAVE 15 HP (BLOWER)	028-12307-000	028-13273-000
	10	23A		BUSHING (2-3/16 BORE)	028-12338-000	- - -
	10	23A		BUSHING (2-7/16 BORE)	- - -	028-12306-000
	10	24		PULLEY/SHEAVE 15 HP (MOTOR)	028-13271-000	028-12070-000
	10	24A		BUSHING (1-5/8 BORE)	028-12082-000	028-12082-000
20 HP	10	25		"V" BELT (BX 55) (2-REQ'D)	028-12367-000	- - -
	10	25		"V" BELT (BX 68) (2-REQ'D)	- - -	028-10382-000
	10	26		PULLEY/SHEAVE 20 HP (BLOWER)	028-12307-000	028-13273-000
	10	26A		BUSHING (2-3/16 BORE)	028-12338-000	- - -
	10	26A		BUSHING (2-7/16 BORE)	- - -	028-12306-000
	10	27		PULLEY/SHEAVE 20 HP (MOTOR)	028-12308-000	028-13272-000
25 HP	10	27A		BUSHING (1-5/8 BORE)	028-12082-000	028-12082-000
	10	28		"V" BELT (5VX 580) (2-REQ'D)	028-13295-000	- - -
	10	28		"V" BELT (5VX 710) (2-REQ'D)	- - -	028-13296-000
	10	29		PULLEY/SHEAVE 25 HP (BLOWER)	028-12307-000	028-13273-000
	10	29A		BUSHING (2-3/16 BORE)	028-12338-000	- - -
	10	29A		BUSHING (2-7/16 BORE)	- - -	028-12306-000
25 HP	10	30		PULLEY/SHEAVE 25 HP (MOTOR)	028-12073-000	028-12308-000
	10	30A		BUSHING (1-7/8 BORE)	028-12083-000	028-12083-000
	10	31		"V" BELT (5VX 580) (2-REQ'D)	028-13295-000	- - -
	10	31		"V" BELT (5VX 710) (2-REQ'D)	- - -	028-13296-000

SUPPLY AIR DRIVE ADJUSTMENT

Use the following tables and pitch diameter (PD) to select a new motor pulley/sheave.
(Specified CFM / Measured CFM) x PD of standard motor pulley = PD of new motor pulley

BROWNING 2B5V --	PART NUMBER	BROWNING 2B5V --	PART NUMBER	BROWNING 2B5V -	PART NUMBER	BROWNING 2B5V -	PART NUMBER
46	028-13927-000	54	028-13929-000	62	028-13294-000	70	028-12072-700
48	028-13928-000	56	028-13930-000	64	028-13272-000	74	028-12073-700
50	028-13269-000	58	028-12070-700	66	028-12071-700	80	028-12074-700
52	028-13270-000	60	028-13271-000	68	028-12308-700	86	028-12335-700

30 TON (CONT'D)

108 KW HEAT

FIG	ITEM	UNIT STYLE	DESCRIPTION	240V	480V	575V
5	1		ELECTRIC HEAT UNIT 108 KW W/CONTROLS	N/A	025-32648-108	025-32649-108
5	2		CONTACTORS (3-REQ'D)	N/A	024-30908-000	024-30908-000
5	3		FUSE BLOCK (3-REQ'D)	N/A	025-33747-000	025-33747-000
5	4		FUSES, 60A (9-REQ'D)	N/A	025-33748-000	---
5	4		FUSES, 50A (9-REQ'D)	N/A	---	025-33750-000
5	5		SWITCH, AIR FLOW	N/A	025-33743-000	025-33743-000
5	6		TERMINAL BLOCK, POWER VOLTAGE	N/A	025-33744-000	025-33744-000
5	7		TERMINAL BLOCK, CONTROL VOLTAGE	N/A	025-33749-000	025-33749-000
5	8		CONTROL, PRIMARY LIMIT TEMP. (1-REQ'D) (2)	N/A	025-32774-000	025-32774-000
5	9		CONTROL, BACKUP LIMIT TEMP. (6-REQ'D) (7)	N/A	025-32779-000	025-32779-000

ELECTRIC HEAT - (40 TON)

40 KW HEAT

FIG	ITEM	UNIT STYLE	DESCRIPTION	240V	480V	575V
5	1		ELECTRIC HEAT UNIT 40 KW W/CONTROLS	025-32647-040	025-32648-040	025-32649-040
5	2		CONTACTORS (2-REQ'D)	024-30908-000	---	---
5	2		CONTACTOR (1-REQ'D)	---	024-30908-000	024-30908-000
5	3		FUSE BLOCK (2-REQ'D)	025-33741-000	---	---
5	3		FUSE BLOCK (1-REQ'D)	---	025-33747-000	025-33747-000
5	4		FUSES, 60A (6-REQ'D)	025-33742-000	---	---
5	4		FUSES, 60A (3-REQ'D)	---	025-33748-000	025-33748-000
5	5		SWITCH, AIR FLOW	025-33743-000	025-33743-000	025-33743-000
5	6		TERMINAL BLOCK, POWER VOLTAGE	025-33744-000	025-33744-000	025-33744-000
5	7		TERMINAL BLOCK, CONTROL VOLTAGE	025-33745-000	025-33745-000	025-33745-000
5	8		CONTROL, PRIMARY LIMIT TEMP. (1-REQ'D) (1)	025-32773-000	025-32773-000	025-32773-000
5	9		CONTROL, BACKUP LIMIT TEMP. (4-REQ'D) (6)	025-32778-000	---	---
5	9		CONTROL, BACKUP LIMIT TEMP. (2-REQ'D) (6)	---	025-32778-000	025-32778-000

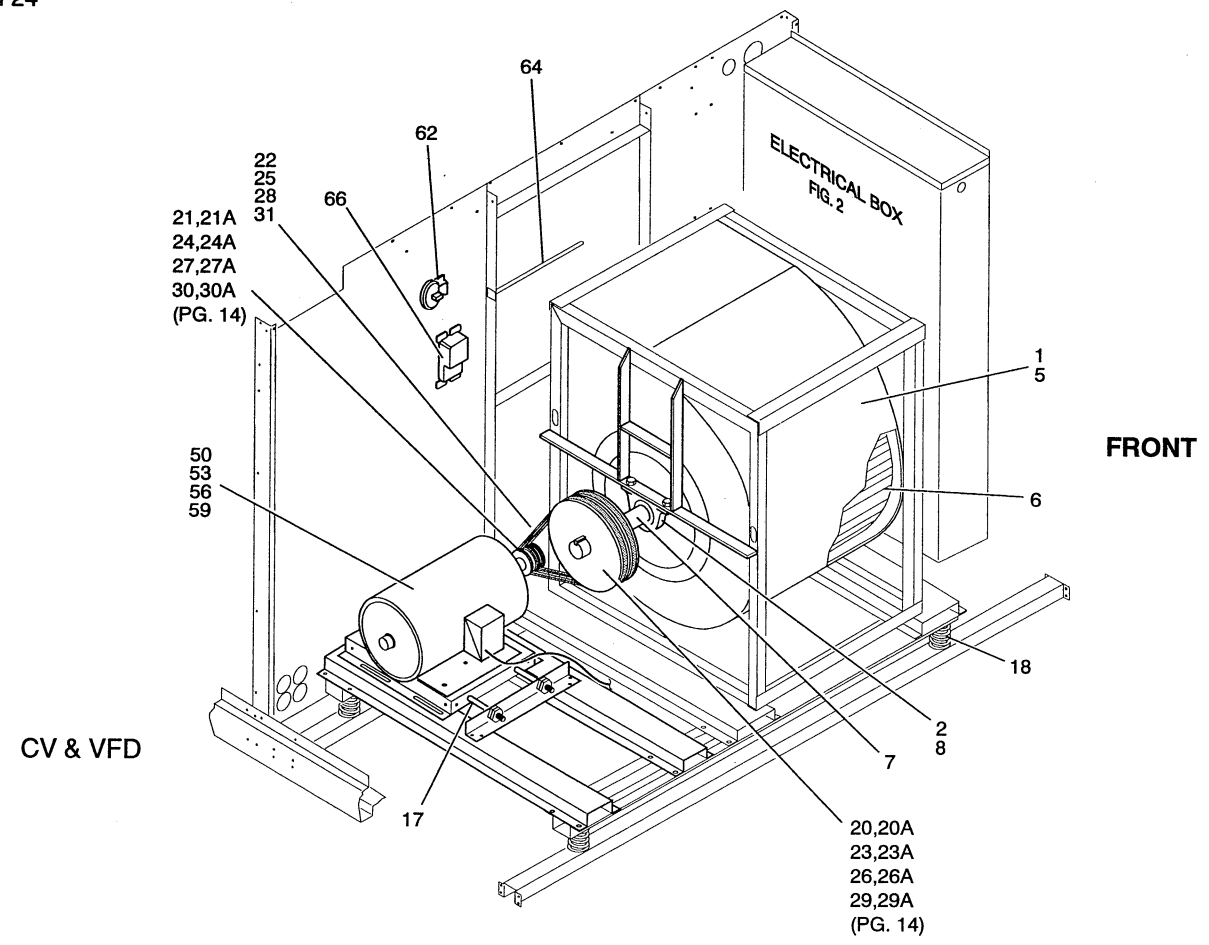
80 KW HEAT

FIG	ITEM	UNIT STYLE	DESCRIPTION	240V	480V	575V
5	1		ELECTRIC HEAT UNIT 80 KW W/CONTROLS	025-32647-080	025-32648-080	025-32649-080
5	2		CONTACTORS (4-REQ'D)	024-30908-000	---	---
5	2		CONTACTORS (2-REQ'D)	---	024-30908-000	024-30908-000
5	3		FUSE BLOCK (4-REQ'D)	025-33741-000	---	---
5	3		FUSE BLOCK (2-REQ'D)	---	025-33747-000	025-33747-000
5	4		FUSES, 60A (12-REQ'D)	025-33742-000	---	---
5	4		FUSES, 60A (6-REQ'D)	---	025-33748-000	025-33748-000
5	5		SWITCH, AIR FLOW	025-33743-000	025-33743-000	025-33743-000
5	6		TERMINAL BLOCK, POWER VOLTAGE	025-33744-000	025-33744-000	025-33744-000
5	7		TERMINAL BLOCK, CONTROL VOLTAGE	025-33746-000	025-33746-000	025-33746-000
5	8		CONTROL, PRIMARY LIMIT TEMP. (1-REQ'D) (1)	025-32773-000	025-32773-000	025-32773-000
5	9		CONTROL, BACKUP LIMIT TEMP. (8-REQ'D) (6)	025-32778-000	---	---
5	9		CONTROL, BACKUP LIMIT TEMP. (4-REQ'D) (6)	---	025-32778-000	025-32778-000

108 KW HEAT

FIG	ITEM	UNIT STYLE	DESCRIPTION	240V	480V	575V
5	1		ELECTRIC HEAT UNIT 108 KW W/CONTROLS	N/A	025-32648-108	025-32649-108
5	2		CONTACTORS (3-REQ'D)	N/A	024-30908-000	024-30908-000
5	3		FUSE BLOCK (3-REQ'D)	N/A	025-33747-000	025-33747-000
5	4		FUSES, 60A (9-REQ'D)	N/A	025-33748-000	---
5	4		FUSES, 50A (9-REQ'D)	N/A	---	025-33750-000
5	5		SWITCH, AIR FLOW	N/A	025-33743-000	025-33743-000
5	6		TERMINAL BLOCK, POWER VOLTAGE	N/A	025-33744-000	025-33744-000
5	7		TERMINAL BLOCK, CONTROL VOLTAGE	N/A	025-33749-000	025-33749-000
5	8		CONTROL, PRIMARY LIMIT TEMP. (1-REQ'D) (1)	N/A	025-32773-000	025-32773-000
5	9		CONTROL, BACKUP LIMIT TEMP. (6-REQ'D) (6)	N/A	025-32778-000	---
5	9		CONTROL, BACKUP LIMIT TEMP. (6-REQ'D) (5)	N/A	---	025-32777-000

- (1) 025-32773-000 OPENS @ 125° F, CLOSE @ 85° F, W/AUTO RESET
- (2) 025-32774-000 OPENS @ 135° F, CLOSE @ 95° F, W/AUTO RESET
- (3) 025-32775-000 OPENS @ 160° F
- (4) 025-32776-000 OPENS @ 170° F
- (5) 025-32777-000 OPENS @ 180° F
- (6) 025-32778-000 OPENS @ 190° F
- (7) 025-32779-000 OPENS @ 200° F



**HOT WATER HEAT
INFO. TO BE FORTHCOMING**

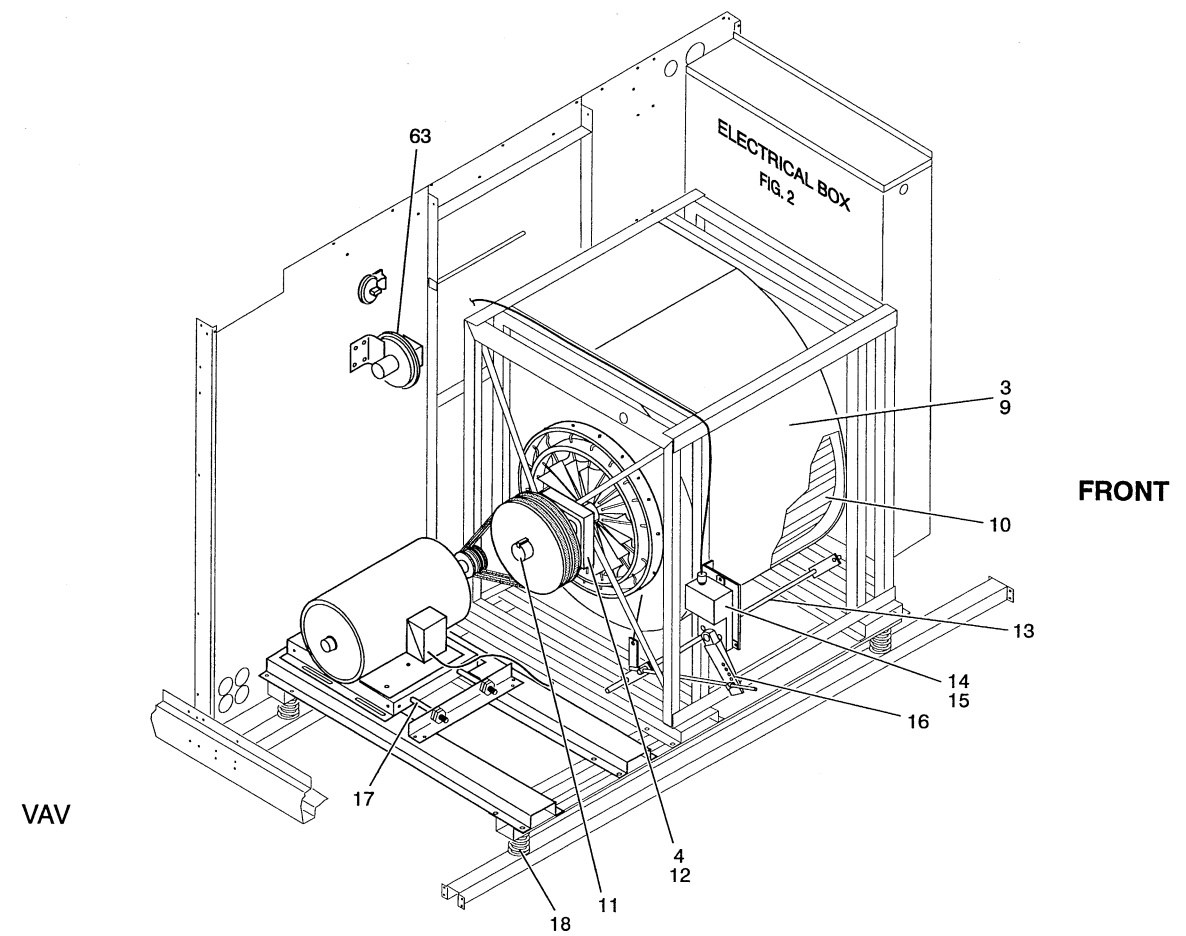


FIG. 10 – BLOWER ASSEMBLIES

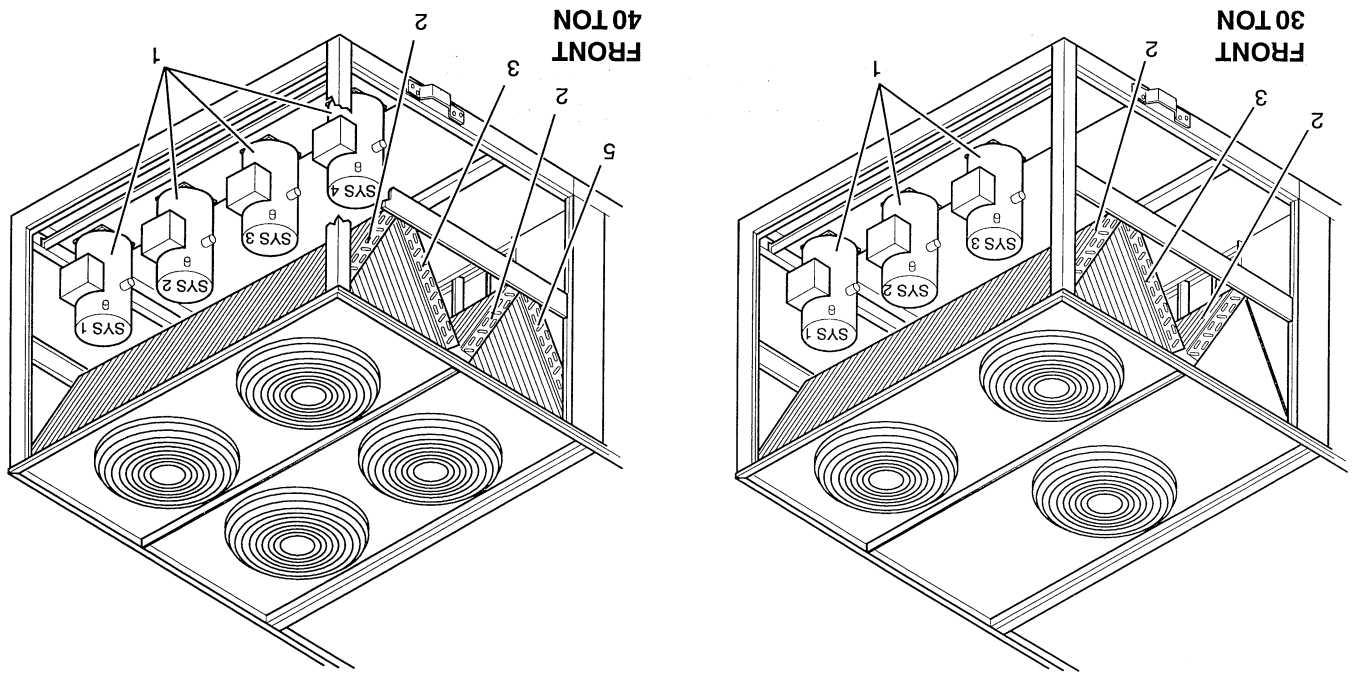


FIG. 8 - CONDENSER COILS

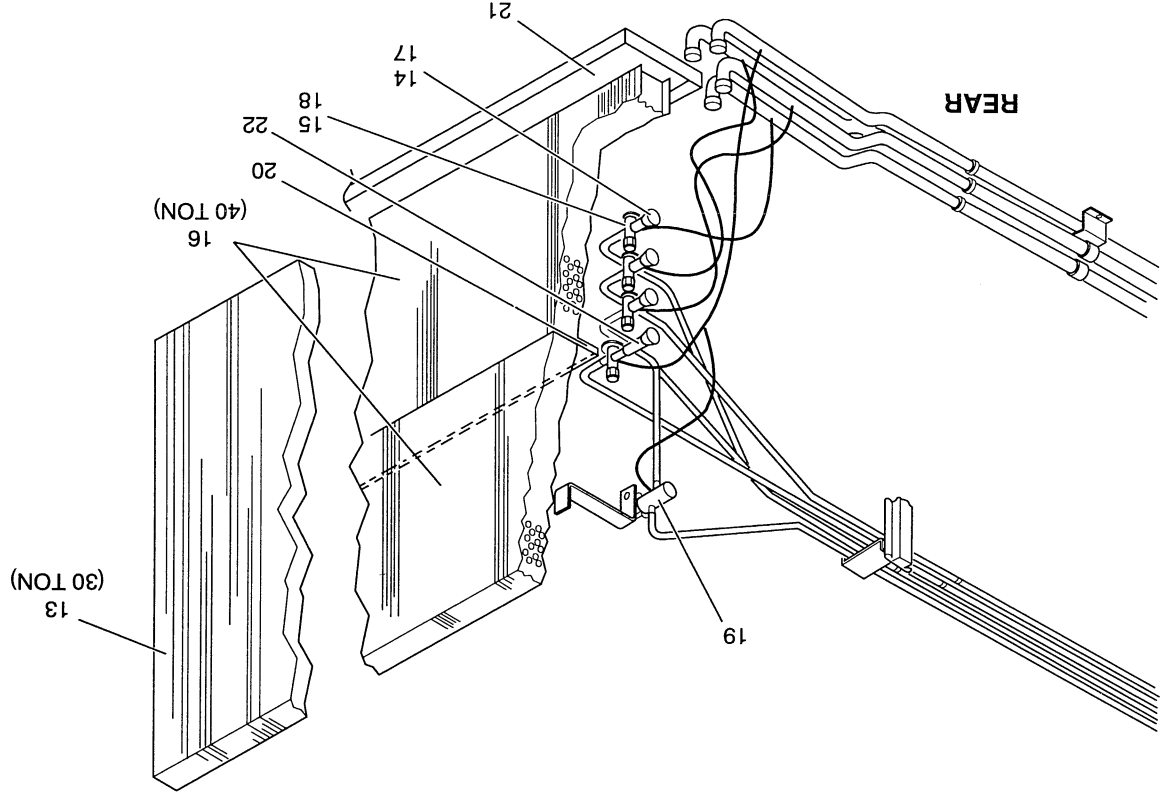


FIG. 9 - EVAPORATOR COIL

REFRIGERATION COMPONENTS & OPTIONS (10TH MODEL NO. DIGIT)

OPTION	INCLUDES	OPTION	INCLUDES	OPTION	INCLUDES	OPTION	INCLUDES
A	1,3,5,7	E	1,3,6,7	I	1,3,5,8	M	1,3,6,8
B	2,3,5,7	F	2,3,6,7	J	2,3,5,8	N	2,3,6,8
C	1,4,5,7	G	1,4,6,7	K	1,4,5,8	O	1,4,6,8
D	2,4,5,7	H	2,4,6,7	L	2,4,5,8	P	2,4,6,8

CONDENSER COIL

2 = TECHNICOAATED COIL

3 = STANDARD
4 = HOT GAS BYPASS

PIPING

5 = STANDARD
6 = HI CAPACITY

EVAPORATOR COIL

7 = WITH HEAD PRESSURE CONTROL
(SEE 2LA0470340--)
8 = W/O HEAD PRESSURE CONTROL

HEAD PRESSURE CONTROL

FIG	ITEM	UNIT	DESCRIPTION
8	1	Y14	40 TON
8	1	Y13	30 TON
8	2	8	COIL, COND. (SYS. #1 & #3 W/HDR. & DISTR.)
8	2	8	COIL, COND. COATED (SYS. #1 & #3 W/HDR., DISTR.)
8	2A	8	HEADER, 1-1/8" DIA. (SYS. #1 & #3)
8	2B	8	HEADER, 5/8" DIA. (SYS. #1 & #3)
8	2C	8	DISTRIBUTOR BODY 2-FEED (SYS. #1, #2, #3, #4)
8	3	8	COIL, COND. (SYS. #2 W/HDR. & DISTR.)
8	3	8	COIL, COND. COATED (SYS. #2 W/HDR., DISTR.)
8	3A	8	HEADER, 1-1/8" DIA. (SYS. #2)
8	3B	8	HEADER, 5/8" DIA. (SYS. #2)
4	4		SPACE FOR FUTURE PARTS ADDITIONS
8	5	8	COIL, COND. (SYS. #4 W/HDR. & DISTR.)
8	5	8	COIL, COND. COATED (SYS. #4 W/HDR., DISTR.)
8	5A	8	HEADER, 1-1/8" DIA. (SYS. #4)
8	5B	8	HEADER, 5/8" DIA. (SYS. #4)
8	6	8	CORE, VALVE
8	7	8	STEM, VALVE 1/4 OD TUBE
8	8	8	INDICATOR, MOISTURE (1-PER SYSTEM)
8	9	8	FILTER, DRIER (1-PER SYSTEM)
8	10	8	CONTROL, PRESS. (DISCH. - MANUAL) 1-PER COMPR. [HP1-4]
8	11	8	CONTROL, PRESS. (SUCTION) 1-PER COMPRESSOR OR [LP1-4]
8	12	8	CONTROL, PRESSURE (DISCH.) (1-REQD) [PS-5]
9	9	9	COIL, EVAP. (30T, 3-ROW) INTERTWINED/STD. (1)
9	9	9	COIL, EVAP. (40T, 4-ROW) INTERTWINED/STD. (2)
9	9	9	COIL, EVAP. (40T 4-ROW, 16-FPI) INTERTWINED/HI CAPACITY (2)
9	13A	9	ASS'Y, HEADER (SYS. #1) EVAP.
9	13B	9	ASS'Y, HEADER (SYS. #2) EVAP.
9	13C	9	ASS'Y, HEADER (SYS. #3) EVAP.
9	14	9	VALVE, DISTR. (INCL. TUBES) 30 TON (3-ROW) (3)
9	14	9	VALVE, DISTR. (INCL. TUBES) 30 TON (4-ROW) (3)
9	15	9	VALVE, THERMAL EXPANSION - 30 TON (3-ROW)
9	15	9	VALVE, THERMAL EXPANSION - 30 TON (4-ROW)
9	16	9	COIL, EVAP. (40T 4-ROW, 13-FPI) INTERTWINED/STD. (2)
9	16A	9	ASS'Y, HEADER (SYS. #1) EVAP.
9	16B	9	ASS'Y, HEADER (SYS. #2) EVAP.
9	16C	9	ASS'Y, HEADER (SYS. #3) EVAP.
9	16D	9	ASS'Y, HEADER (SYS. #4) EVAP.
9	17	9	VALVE, DISTR. (INCL. TUBES) 40 TON (3)
9	18	9	VALVE, THERMAL EXPANSION - 40 TON
9	19	9	VALVE, (HOT GAS BY-PASS) 30, 40 TON EVAP. COIL
9	20	9	DRAIN PAN (INTERMEDIATE)
9	21	9	DRAIN PAN (BOTTOM)
9	22	9	TEE ADAPTER - HOT GAS BY-PASS ONLY (3)

* ITEM NOT SHOWN.

(1) INCLUDES HEADERS, DISTRIBUTORS, & TXV'S READILY ADAPTABLE FOR HOT GAS BYPASS.

(2) CONTAINS 2-COILS, MARRIED W/HEADERS, INCLUDES DISTRIBUTORS & TXV'S READILY ADAPTABLE FOR HOT GAS BYPASS.

(3) ON HOT GAS BY-PASS THE NOZZLE IS REMOVED FROM THE DISTRIBUTOR AND PLACED IN THE INLET OF THE TEE ADAPTER.