

# MicroGateway Configurator

The easy way to configure a MicroGateway.



 **YORK**<sup>®</sup> INTERNATIONAL  
CORPORATION

04/01/01

Property of YORK International.  
Developed by the BAS Controls Group

# Contents

Overview .....	3
The Screen .....	4
Installation .....	5
Connecting the Microgateway to a Computer .....	6
Port Setup .....	7
Configurator .....	8
What does each Macro do? .....	10
TYPE: .....	12
1065 Micro Panel .....	12
1095 Micro Panel .....	13
1095 Micro Panel with Slave .....	14
776 Micro Panel .....	15
940 Micro Panel .....	16
Frick .....	17
OptiView (General).....	18
OptiView YK w/VSD .....	19
OptiView YK w/SSS or Mechanical Starter .....	19
OptiView YS w/SSS or Mechanical Starter .....	20
YT with VSD .....	21
YT with SSS .....	22
PORT 1 .....	23
1065 Micro Panel .....	23
1095 Micro Panel .....	23
776 Micro Panel .....	23
940 Micro Panel .....	23
Frick .....	23
ISN R6.....	24
ISN R7.....	24
OptiView Micro Panel .....	24
PORT 2 .....	25
1065 Micro Panel .....	25
1095 Micro Panel .....	25
776 Micro Panel .....	25
940 Micro Panel .....	25
Frick .....	26
N2 .....	26
OptiView Micro Panel .....	26
Terminal .....	26

## Overview

The MicroGateway Configurator is a terminal emulation program which simplifies setup of MicroGateway devices for standard YORK chillers. The MicroGateway Configurator is not required to operate or setup the MicroGateway but it can be used as an aid when connecting standard York chillers to a variety of network protocols.

*NOTE: This program was previously referred to as ISNtools. Functionally it has not changed but its use has been expanded to include additional MicroGateway products.*

For MicroGateway products which use Quick Start features for configuration and setup the MicroGateway Configurator operates as a terminal emulation program, eliminating the need for multiple software programs.

The MicroGateway Configurator allows macro programs to be stored and recalled for specific applications. The macros included with this software are intended for use with the ISN MicroGateway, which does not use Quick Start. The macro programs are used to configure the ISN MicroGateway in accordance with the selected chiller and the points normally used for that chiller.

The MicroGateway is not limited to the macros included with this software. Additional macros may be created and saved by the user as needed.

The MicroGateway Configurator is a windows-based program which requires Windows® 9x, Me®, Windows NT® 4.0 or newer to operate. Once installed on the hard drive, it is not necessary to use the CD. Documentation may be copied from the CD to the hard drive if desired. A minimum of 2 MB is required to install the software. For a complete install of the documentation included on this CD, 15 MB is required.

In addition to the MicroGateway Configurator software included in this CD, several documents are included to assist and further enhance the usability of the MicroGateway. All documents included on this CD are in Adobe® Acrobat® PDF format. Included on the CD is Acrobat Reader 4.0 which can be installed to read the documents.

For additional information or copies of this CD, contact the local York Service/Sales Office.

## The Screen

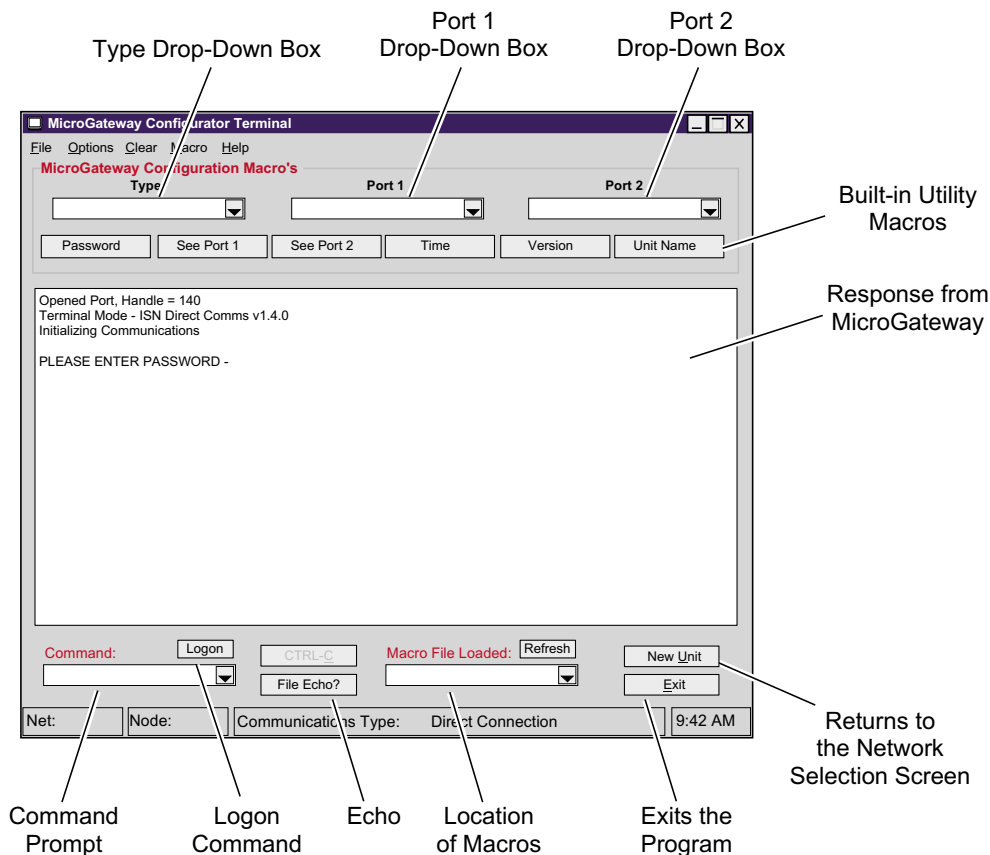
The MicroGateway Configurator provides a windows style interface for communicating with the MicroGateway. Along with the list of macros for setting up and verifying communications, it is also possible to communicate by entering typed commands. New macros can also be created or personalized using the macro wizard.

The MicroGateway Configurator window has three areas. The top section of the window provides access to the macros stored in the program. There are three drop-down boxes for selecting macros based on the type of chiller micro panel or network connection. There are also several utility macros. These are for entering the standard password, determining current port setups and viewing the current time, software version and unit name entered in the MicroGateway.

The middle section shows the MicroGateway's response for each command entered.

The bottom section provides a method for typing individual commands, reentering the logon, refreshing the screen, selecting a new unit or exiting the program.

To configure the communications, first select the type of chiller from the Type drop-down box. Then select the type of chiller or communications protocol for port 1 (TB1 or TB3) from the Port 1 drop-down box. Finally, select the type of chiller or communication protocol for port 2 (TB2 or TB4) from the Port 2 drop-down box.

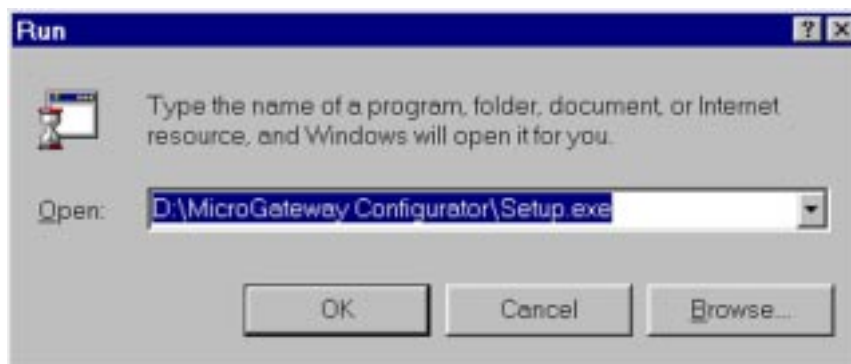


## Installation

To install the MicroGateway Configurator:

1. Insert the CD into the appropriate CD-ROM drive.
2. Click **Start** button located on the left side of the Windows Taskbar and select **Run**.
3. In the Run dialog box, type the following  
D:\MicroGateway Configurator\Setup.exe  
where D is the letter designation of the CD drive.
4. Click **OK** to install the program.
5. Follow the instructions on the screen, clicking on **Next** to accept the default values.

*NOTE: On some computers the install program asks to reboot the PC. If so, reboot the PC before starting MicroGateway Configurator.*



## Connecting the MicroGateway to a Computer

To connect the computer to the MicroGateway a communications cable is required. The communications cable must have three terminating wires to connect to the MicroGateway.

1. Disconnect power to the MicroGateway by pulling the power cable from connector J1.
2. Connect one end of the cable to the computer's RS232 port.

*NOTE: RS232 port connections on computers typically utilize a DB-9 connector.*

COMPUTER (DB-9)	MICROGATEWAY
Pin 2	TX2
Pin 3	RX2
Pin 5	GND

3. Connect the other end of the cable to the RS232 side of port 2 (TB4) on the MicroGateway.
4. Check all jumpers, DIP switches and rotary switches for proper settings on the micropanel board. Refer to the appropriate installation manual.
5. Ensure that the capacitor jumper (J7) is installed on the MicroGateway.
6. Power up the MicroGateway. Notice that the red STATUS LED is flashing. If the LED is not flashing, check the 12 volt power supply.
7. Click **Start** on the left side of the taskbar. Point to **Programs**, then click **MicroGateway Configurator**. The MicroGateway Configurator splash screen appears with version information for 5 seconds. It then is minimized and becomes an icon located next to the taskbar (next to the clock in the lower right corner). When the MicroGateway Configurator is running, the icon flashes.

The computer is now communicating with the MicroGateway. To use the MicroGateway Configurator software, follow the Port Setup procedure.

*NOTE: VT100 emulation software could also be utilized to access the MicroGateway software. Refer to the Operations Manual.*

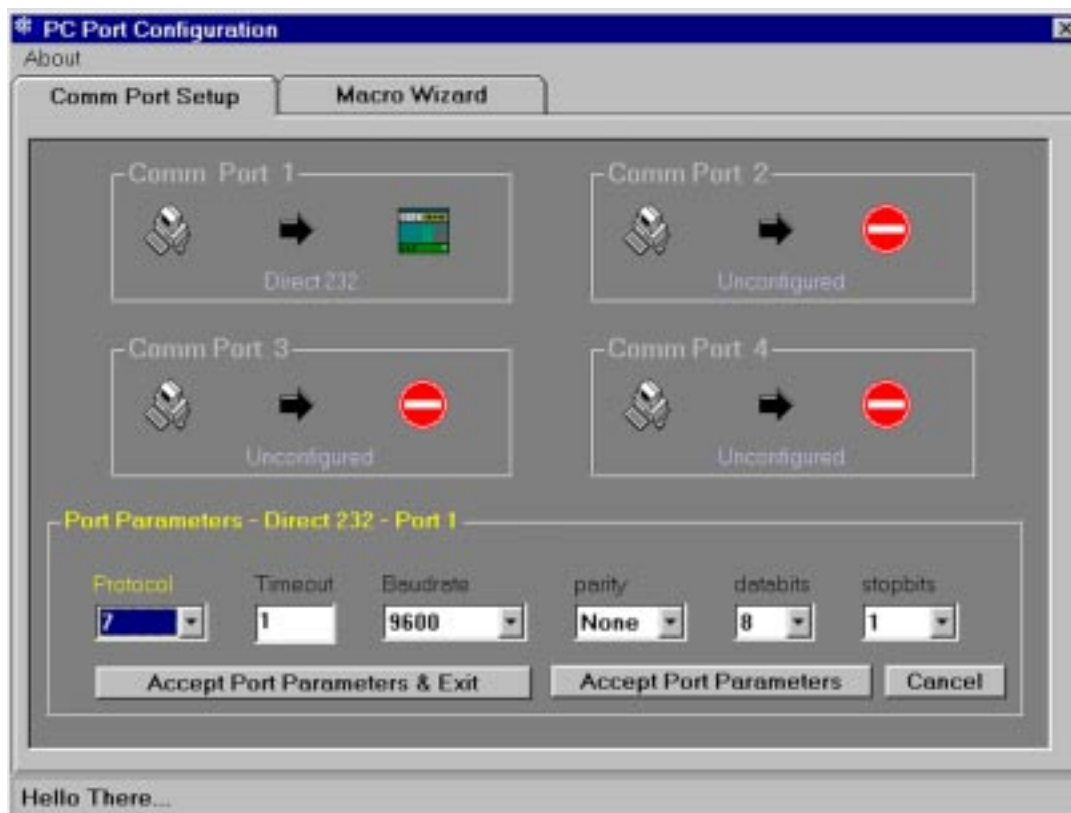
## Port Setup

The first time the MicroGateway Configurator is run, the computer port used to communicate to the MicroGateway must be configured.

1. Right-click on the **Sunflake** icon next to the clock on the taskbar. Click **Configure PC Port** on the pop-up menu.
2. Drag the **Direct 232** or **Linc FM** icon over the appropriate computer port. If connecting directly to a MicroGateway, use the **Direct 232** icon. If connecting to a networked MicroGateway using a Linc FM connected to a LAN, use the **Linc FM** icon.
3. The Port Parameters box appears at the bottom of the screen to verify the communication settings. From the **Protocol** drop-down menu, select **7**.

*Note: Setting the node switch to 255 on the MicroGateway places the MicroGateway in terminal mode and sets port 2 to the Rev. 7 protocol (see step 16 below). If necessary, Rev. 6 can be selected. Refer to the Operations Manual.*

4. For an advanced user, additional communication settings may be chosen at this time.
5. After all protocol options have been selected, click the **Accept Port Parameters** button. The PC port is now configured.
6. Click the X (close button) in the upper right corner of the window.

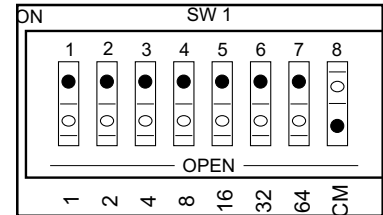


## Configurator

1. Disconnect power to the MicroGateway by removing the power cable from connector J1.

*NOTE: Note the device address before changing the NODE switch.*

2. Set the node switch to 255 on the MicroGateway by placing the rocker switches in the ON position for a minimum of 10 seconds. Then change the node switch on the MicroGateway back to the correct system address for the device.



3. Right-click on the **Sunflake** icon. Click **Run Configurator** on the pop-up menu.
4. Click **OK** when the “Welcome...” dialog box appears.
5. When the Network Selection Screen appears select the appropriate connection type.
  - a. If connected directly to the MicroGateway, click **Rev. 7 Direct**.
  - b. If connected via a LAN, enter the network and node addresses in the appropriate boxes. When finished, select exit.

*NOTE: The MicroGateway Configurator will attempt to logon and enter the standard password as part of its initialization. However, the electrical signal sometimes becomes unreadable to the MicroGateway and the logon and password process becomes a manual operation, as outlined in steps 6 and 7.*



6. Click **Logon** or type "logon" in the command combo box and press return.
7. Click **Password** or type "5555" in the command combo box and press return.
8. Configure the user interface by clicking on the **Type** drop down box and selecting the proper chiller type.
9. Configure port 1 for the application by clicking on the **Port 1** drop down box and selecting the proper chiller type.
10. Configure port 2 for the application by clicking on the **Port 2** drop down box and selecting the proper chiller type.

*Note: After the correct protocol has been chosen for port 2, the system will disconnect communications between the MicroGateway and computer. To reconnect to the unit, return to step 3.*

11. When the MicroGateway is connected to the network device, the transmit and receive LED's flash, signifying communication. If the LED's do not flash, the MicroGateway is not communicating with the device.
12. When communications have been proven to the MicroGateway, the other port can be connected to the LAN and communications proven.

## What does each Macro do?

The macros on the MicroGateway are categorized into two groups:

- Type – Configures the points which are used as references between the chiller and MicroGateway.
- Ports – Selects the protocol for communicating between the ports and the network. The macros are listed according to the port which it is connected to and the protocol.

The ports on the MicroGateway should be connected as follows:

TB1 (Port 1, RS485) – ISN and York Talk 2

TB2 (Port 2, RS485) – York Talk 2

TB3 (Port 1, RS232) – York Talk 1, York Talk 3

TB4 (Port 2, RS232) – York Talk 1, York Talk 3, N2, VT100 Terminal Interface

The macros assume the chiller micro panel is connected as listed in the above table. If connected in a different way, the macros are not valid.

The port macros configure the ports for the proper protocol, software and baud rate as required by the network connected to that port, i.e. if an ISN device is connected to port 1 and a York Talk 3 chiller is connected to port 2, select the appropriate ISN macro (**ISN R6** or **ISN R7**) from the Port 1 drop down list and select **OptiView Micro** from the Port 2 drop down list.

Macros available under the Type drop down box are:

1065 Micro

1095 Micro

1095 Micro with Slave

776 Micro

940 Micro

Frick Micro

OptiView YK

OptiView YK w/VSD

OptiView YS

OptiView YT

OptiView YT w/VSD

The macros available for port configuration are:

1065 Micro	Port 1 & Port 2
1095 Micro	Port 1 & Port 2
776 Micro	Port 1 & Port 2
940 Micro	Port 1 & Port 2
Frick Micro	Port 1 & Port 2
ISN Software Revision 6	Port 2
ISN Software Revision 7	Port 2
OptiView Micro	Port 1 & Port 2
N2	Port 2
Terminal	Port 2

Under **File** a menu option has been provided which allows the user to **View Sent Macros File**. This sends the most recently run macro files to Notepad for viewing on the screen. Using Notepad the file may also be sent to a printer or saved as a text file.

The following pages show the macro text string for each type of chiller. Each macro lists the feature, section and pages which are edited. Refer to the Software Reference Manual and the Terminal Users Guide for more information on the individual commands. The Type macros are listed first and the port macros follow.

*NOTE: Each macro text string is written exactly as entered in the MicroGateway Configurator software, utilizing shortcuts. The breakdown of the commands do not utilize the shortcuts but show complete information for each page.*

**TYPE:**

1065 Micro Panel

f49s01p18e0e0eep20e0e0eep22e1e1e1e

f49 User Types  
s01 Section 1  
p18 York Talk 1 Configuration  
e0e0ee Enters values of 0 for the parameters, effectively turning off York Talk 1  
p20 York Talk 3 Configuration  
e0e0ee Enters values of 0 for the parameters, effectively turning off York Talk 3  
p22 York Talk 2 Configuration  
e1e1e1e Enters values of 1 for the parameters, effectively turning on York Talk 2

f52p01e0ee

f52 York Talk 1 Polling  
p01 Address and polling rate configuration  
e0ee Enters a network address of 0, disabling York Talk 1

f53s01p01e0eeesspe0eeesspe0eeesspe0eee

f53 York Talk 3 Polling  
s01 Section 1  
p01 Enables/disables the function  
e0eee Enters a value of 0 and disables York Talk 3 for section 1  
s02 Section 2  
p01 Enables/disables the function  
e0eee Enters a value of 0 and disables York Talk 3 for section 2  
s03 Section 3  
p01 Enables/disables the function  
e0eee Enters values of 0 and disables York Talk 3 for section 3  
s04 Section 4  
p01 Enables/disables the function  
e0eee Enters values of 0 and disables York Talk 3 for section 4

f54s01p01e1e20esspe0ee

f54 York Talk 2 Polling  
s01 Section 1 Master Board Setup  
p01 Address and polling rate configuration  
e1e20e Sets the node address to 1 and polling rate to 20 seconds  
s02 Section 2 Slave Board Setup  
p01 Address and polling rate configuration  
e0ee Enters a network address of 0, disabling York Talk 2

## 1095 Micro Panel

### f49s01p18e0e0eep20e0e0eep22e1e1e1e

f49 User Types  
s01 Section 1  
p18 York Talk 1 Configuration  
e0e0ee Enters values of 0 for the parameters, effectively turning off York Talk 1  
p20 York Talk 3 Configuration  
e0e0ee Enters values of 0 for the parameters, effectively turning off York Talk 3  
p22 York Talk 2 Configuration  
e1e1e1e Enters values of 1 for the parameters, effectively turning on York Talk 2

### f52p01e0ee

f52 York Talk 1 Polling  
p01 Address and polling rate configuration  
e0ee Enters a network address of 0, disabling York Talk 1

### f53s01p01e0eeesspe0eeesspe0eeesspe0eee

f53 York Talk 3 Polling  
s01 Section 1  
p01 Enables/disables the function  
e0eee Enters a value of 0 and disables York Talk 3 for section 1  
s02 Section 2  
p01 Enables/disables the function  
e0eee Enters a value of 0 and disables York Talk 3 for section 2  
s03 Section 3  
p01 Enables/disables the function  
e0eee Enters values of 0 and disables York Talk 3 for section 3  
s04 Section 4  
p01 Enables/disables the function  
e0eee Enters values of 0 and disables York Talk 3 for section 4

### f54s01p01e1e10esspe0ee

f54 York Talk 2 Polling  
s01 Section 1 Master Board Setup  
p01 Address and polling rate configuration  
e1e10e Sets the node address to 1 and polling rate to 20 seconds  
s02 Section 2 Slave Board Setup  
p01 Address and polling rate configuration  
e0ee Enters a network address of 0

## 1095 Micro Panel with Slave

### f49s01p18e0e0eep20e0e0eep22e1e2e1e

f49	User Types
s01	Section 1
p18	York Talk 1 Configuration
e0e0ee	Enters values of 0 for the parameters, effectively turning off York Talk 1
p20	York Talk 3 Configuration
e0e0ee	Enters values of 0 for the parameters, effectively turning off York Talk 3
p22	York Talk 2 Configuration
e1e2e1e	Enters values of 1, 2 and 1 for the parameters, turning on York Talk 2

### f52p01e0ee

f52	York Talk 1 Polling
p01	Address and polling rate configuration
e0ee	Enters a network address of 0, disabling York Talk 1

### f53s01p01e0eeesspe0eeesspe0eeesspe0eee

f53	York Talk 3 Polling
s01	Section 1
p01	Enables/disables the function
e0eee	Enters a value of 0 and disables York Talk 3 for section 1
s02	Section 2
p01	Enables/disables the function
e0eee	Enters a value of 0 and disables York Talk 3 for section 2
s03	Section 3
p01	Enables/disables the function
e0eee	Enters values of 0 and disables York Talk 3 for section 3
s04	Section 4
p01	Enables/disables the function
e0eee	Enters values of 0 and disables York Talk 3 for section 4

### f54s01p01e1e10esspe2e10e

f54	York Talk 2 Polling
s01	Section 1 Master Board Setup
p01	Address and polling rate configuration
e1e10e	Sets the node address to 1 and polling rate to 10 seconds
s02	Section 2 Slave Board Setup
p01	Address and polling rate configuration
e2e10e	Sets the node address to 2 and polling rate to 10 seconds

## 776 Micro Panel

### f49s01p18e1e1e1ep20e0e0eep22e0e0ee

f49	User Types
s01	Section 1
p18	York Talk 1 Configuration
e1e1e1e	Enters values of 1 for the parameters, effectively turning on York Talk 1
p20	York Talk 3 Configuration
e0e0ee	Enters values of 0 for the parameters, effectively turning off York Talk 3
p22	York Talk 2 Configuration
e0e0ee	Enters values of 0 for the parameters, effectively turning off York Talk 2

### f52p01e1e10e

f52	York Talk 1 Polling
p01	Address and polling rate configuration
e1e10e	Sets the node address to 1 and polling rate to 10 seconds

### f53s01p01e0eeesspe0eeesspe0eeesspe0eee

f53	York Talk 3 Polling
s01	Section 1
p01	Enables/disables the function
e0eee	Enters a value of 0 and disables York Talk 3 for section 1
s02	Section 2
p01	Enables/disables the function
e0eee	Enters a value of 0 and disables York Talk 3 for section 2
s03	Section 3
p01	Enables/disables the function
e0eee	Enters values of 0 and disables York Talk 3 for section 3
s04	Section 4
p01	Enables/disables the function
e0eee	Enters values of 0 and disables York Talk 3 for section 4

### f54s01p01e0eeesspe0ee

f54	York Talk 2 Polling
s01	Section 1 Master Board Setup
p01	Address and polling rate configuration
e0ee	Enters a network address of 0, disabling York Talk 2
s02	Section 2 Slave Board Setup
p01	Address and polling rate configuration
e0ee	Enters a network address of 0, disabling York Talk 2

## 940 Micro Panel

### f49s01p18e1e1e1ep20e0e0eep22e0e0ee

f49 User Types  
s01 Section 1  
p18 York Talk 1 Configuration  
e1e1e1e Enters values of 1 for the parameters, effectively turning on York Talk 1  
p20 York Talk 3 Configuration  
e0e0ee Enters values of 0 for the parameters, effectively turning off York Talk 3  
p22 York Talk 2 Configuration  
e0e0ee Enters values of 0 for the parameters, effectively turning off York Talk 2

### f52p01e1e10e

f52 York Talk 1 Polling  
p01 Address and polling rate configuration  
e1e10e Sets the node address to 1 and polling rate to 10 seconds

### f53s01p01e0eeesspe0eeesspe0eeesspe0eee

f53 York Talk 3 Polling  
s01 Section 1  
p01 Enables/disables the function  
e0eee Enters a value of 0 and disables York Talk 3 for section 1  
s02 Section 2  
p01 Enables/disables the function  
e0eee Enters a value of 0 and disables York Talk 3 for section 2  
s03 Section 3  
p01 Enables/disables the function  
e0eee Enters values of 0 and disables York Talk 3 for section 3  
s04 Section 4  
p01 Enables/disables the function  
e0eee Enters values of 0 and disables York Talk 3 for section 4

### f54s01p01e0eeesspe0ee

f54 York Talk 2 Polling  
s01 Section 1 Master Board Setup  
p01 Address and polling rate configuration  
e0ee Enters a network address of 0, disabling York Talk 2  
s02 Section 2 Slave Board Setup  
p01 Address and polling rate configuration  
e0ee Enters a network address of 0, disabling York Talk 2

Frick

f49s01p18e0e0eep20e0e0eep22e1e1e1e

- f49 User Types
- s01 Section 1
- p18 York Talk 1 Configuration
- e0e0ee Enters values of 0 for the parameters, effectively turning off York Talk 1
- p20 York Talk 3 Configuration
- e0e0ee Enters values of 0 for the parameters, effectively turning off York Talk 3
- p22 York Talk 2 Configuration
- e1e1e1e Enters values of 1 for the parameters, effectively turning on York Talk 2

f52p01e0ee

- f52 York Talk 1 Polling
- p01 Address and polling rate configuration
- e0ee Sets the node address to 0, disabling York Talk 1

f53s01p01e0eeesspe0eeesspe0eeesspe0eee

- f53 York Talk 3 Polling
- s01 Section 1
- p01 Enables/disables the function
- e0eee Enters a value of 0 and disables York Talk 3 for section 1
- s02 Section 2
- p01 Enables/disables the function
- e0eee Enters a value of 0 and disables York Talk 3 for section 2
- s03 Section 3
- p01 Enables/disables the function
- e0eee Enters values of 0 and disables York Talk 3 for section 3
- s04 Section 4
- p01 Enables/disables the function
- e0eee Enters values of 0 and disables York Talk 3 for section 4

f54s01p01e1e10esspe0ee

- f54 York Talk 2 Polling
- s01 Section 1 Master Board Setup
- p01 Address and polling rate configuration
- e1e10e Enters a network address of 1 and a polling rate of 10 seconds
- s02 Section 2 Slave Board Setup
- p01 Address and polling rate configuration
- e0ee Enters a network address of 0, disabling York Talk 2

## OptiView (General)

*This macro is run when any of the OptiView choices are selected under the Type dropdown list. It cannot be selected individually.*

### f49s01p18e0e0eep20e1e4e1ep22e0e0ee

f49	User Types
s01	Section 01
p18	York Talk 1 Configuration
e0e0ee	Enters values of q for the paramaters, effectively turning off York Talk 1
p20	York Talk 3 Configuration
e1e4e1e	Enters values of 1, 4 and 1 for the parameters, turning on York Talk 3
p22	York Talk 2 Configuration
e0e0ee	Enters values of 0 for the parameters, effectively turning off York Talk 2

### f52p01e0ee

f52	York Talk 1 Polling
s01	Section 01
p01	Address and polling rate configuration
e0ee	Sets the node address to 0, disabling York Talk 1

### f53s01p01e1eeesspe1eeesspe1eeesspe1eee

f53	York Talk 3 Polling
s01	Section 1
p01	Enables/disables the function
e1eee	Enters a value of 1 and enables York Talk 3 for section 1
s02	Section 2
p01	Enables/disables the function
e1eee	Enters a value of 1 and enables York Talk 3 for section 2
s03	Section 3
p01	Enables/disables the function
e1eee	Enters values of 1 and enables York Talk 3 for section 3
s04	Section 4
p01	Enables/disables the function
e1eee	Enters values of 1 and enables York Talk 3 for section 4

### f54s01p01e1e10esspe0ee

f54	York Talk 2 Polling
s01	Section 1 Master Board Setup
p01	Address and polling rate configuration
e0ee	Enters a network address of 0, disabling York Talk 2

OptiView YK w/VSD

f53s01p19ee53eeep20ee54eeep21ee55eeep22ee73eeep23ee74eeep24ee75eee  
f53 York Talk 3 Polling  
s01 Section 1  
p19 Page chosen to receive information  
ee53eee Data point 53  
p20 Page chosen to receive information  
ee54eee Data point 54  
p21 Page chosen to receive information  
ee55eee Data point 54  
p22 Page chosen to receive information  
ee73eee Data point 73  
p23 Page chosen to receive information  
ee74eee Data point 74  
p24 Page chosen to receive information  
ee75eee Data point 75

OptiView YK w/SSS or Mechanical Starter

f53s01p19ee16eeep20ee17eeep21ee18eeep22ee13eeep23ee14eeep24ee15eee  
f53 York Talk 3 Polling  
s01 Section 1  
p19 Page chosen to receive information  
ee16eee Data point 16  
p20 Page chosen to receive information  
ee17eee Data point 17  
p21 Page chosen to receive information  
ee18eee Data point 18  
p22 Page chosen to receive information  
ee13eee Data point 13  
p23 Page chosen to receive information  
ee14eee Data point 14  
p24 Page chosen to receive information  
ee15eee Data point 15

OptiView YS w/SSS or Mechanical Starter

f53s01p30ee41eeep31e2e54eeep34e2e56eeep35ee37eeep37ee12eeep42e1e35eee  
p55e2e26eeep66e2e4eeep67e2e55eee

f53 York Talk 3 Polling

s01 Section 1

p30 Selects Page 30

e1e41ee5e Selects input 1 (AI) for micro-object 41 polled every 5 seconds

p31 Selects Page 31

e2e54eee Selects variable type 2 for micro-object 54

p34 Selects Page 34

e2e56eee Selects variable type 2 for micro-object 56

p35 Selects Page 35

ee37eee Selects micro-object 37

p37 Selects Page 37

ee12eee Selects micro-object 12

p42 Selects Page 42

e1e35eee Selects variable type 1 for micro-object 35

p55 Selects Page 55

e2e26eee Selects variable type 2 for micro-object 26

p66 Selects Page 66

e2e4eee Selects variable type 2 for micro-object 4

p67 Selects Page 67

e2e55eee Selects variable type 2 for micro-object 55

OptiView YT w/ VSD

f53s01p19ee53eeep20ee54eeep21ee55eeep22ee73eeep23ee74ee  
p24ee75eeep31ee36eeep37ee15eee

f53	York Talk 3 Polling
s01	Section 1
p19	Selects Page 19
ee53eee	Selects micro-object 53
p20	Selects Page 20
ee54eee	Selects micro-object 54
p21	Selects Page 21
ee55eee	Selects micro-object 55
p22	Selects Page 22
ee73eee	Selects micro-object 73
p23	Selects Page 23
ee74eee	Selects micro-object 74
p24	Selects Page 24
ee75eee	Selects micro-object 75
p31	Selects Page 31
ee36eee	Selects micro-object 36
p37	Selects Page 37
ee15eee	Selects micro-object 15

OptiView YT w/ SSS or Mechanical Starter

f53s01p19ee16eeep20ee17eeep21ee18eeep22ee13eeep23ee14ee  
p24ee15eeep31ee36eeep37ee15eee

f53	York Talk 3 Polling
s01	Section 1
p19	Selects Page 19
ee16eee	Selects micro-object 16
p20	Selects Page 20
ee17eee	Selects micro-object 17
p21	Selects Page 21
ee18eee	Selects micro-object 18
p22	Selects Page 22
ee13eee	Selects micro-object 13
p23	Selects Page 23
ee14eee	Selects micro-object 14
p24	Selects Page 24
ee15eee	Selects micro-object 15
p31	Selects Page 31
ee36eee	Selects micro-object 36
p37	Selects Page 37
ee15eee	Selects micro-object 15

## **PORT 1**

### 1065 Micro Panel

f45s01p03e4e

f45

Port Configuration

s01

Section 1

p03

Port 1 Configuration

e4e

Selects York Talk 2, Version 6, 1200 baud

### 1095 Micro Panel

f45s01p03e5e

f45

Port Configuration

s01

Section 1

p03

Port 1 Configuration

e5e

Selects York Talk 2, Version 6, 4800 baud

### 776 Micro Panel

f45s01p03e7e

f45

Port Configuration

s01

Section 1

p03

Port 1 Configuration

e7e

Selects York Talk 1

### 940 Micro Panel

f45s01p03e7e

f45

Port Configuration

s01

Section 1

p03

Port 1 Configuration

e7e

Selects York Talk 1

### Frick

f45s01p03e5e

f45

Port Configuration

s01

Section 1

p03

Port 1 Configuration

e5e

Selects York Talk 2, Version 6, 4800 baud

## **PORT 1 (CONTINUED)**

### ISN R6

f45s01p03e1e

f45	Port Configuration
s01	Section 1
p03	Port 1 Configuration
e1e	Selects ISN LAN Revision 6

### ISN R7

f45s01p03e0e

f45	Port Configuration
s01	Section 1
p03	Port 1 Configuration
e0e	Selects ISN LAN Revision 7

### OptiView Micro Panel

f45s01p03e6e

f45	Port Configuration
s01	Section 1
p03	Port 1 Configuration
e6e	Selects York Talk 3

## **PORT 2**

### 1065 Micro Panel

f45s01p04e4e

f45

Port Configuration

s01

Section 1

p04

Port 2

e4e

Selects York Talk 2, Version 6, 1200 baud

### 1095 Micro Panel

f45s01p04e5e

f45

Port Configuration

s01

Section 1

p04

Port 2 Configuration

e5e

Selects York Talk 2, Version 6, 4800 baud

### 776 Micro Panel

f45s01p04e7e

f45

Port Configuration

s01

Section 1

p04

Port 2 Configuration

e7e

Selects York Talk 1

### 940 Micro Panel

f45s01p04e7e

f45

Port Configuration

s01

Section 1

p04

Port 2 Configuration

e7e

Selects York Talk 1

## PORT 2 (CONTINUED)

### Frick

f45s01p04e5e

f45	Port Configuration
s01	Section 1
p04	Port 2 Configuration
e5e	Selects York Talk 2, Version 6, 4800 baud

### N2

f45s01p04e1e

f45	Port Configuration
s01	Section 1
p04	Port 2 Configuration
e1e	Selects ISN LAN Revision 6

### OptiView Micro Panel

f45s01p04e6e

f45	Port Configuration
s01	Section 1
p04	Port 2 Configuration
e6e	Selects York Talk 3

### Terminal

f45s01p04e0e

f45	Port Configuration
s01	Section 1
p04	Port 2 Configuration
e0e	Selects ISN LAN Revision 7