

# Migration Solutions

SLC™ 500 to CompactLogix™



## Simplifying SLC Migrations

- Minimizes risk and reduces labor time
  - convert I/O without disturbing field wiring connections
  - code conversion tools reduce time to rewrite controller program
- Improves migration and planning using Integrated Architecture Builder tool
- Supports various network topologies with the proven technology of EtherNet/IP

## New Control System Benefits

- Increased flexibility with new open architecture
- Reduced development time and costs through re-use of engineering practices
- Maximized returns on existing assets through improved control and monitoring
- Increased access to plant and production information
- One programming environment for discrete, motion, process, drive, batch, and safety control

*Save valuable production time with safe and flexible migration strategies.*



## Philosophy

In today's economy it is necessary to have migration solutions that help you to achieve increased productivity and lessen your risk of maintaining your legacy equipment. You need to work with a supplier that has the product, service, and industry knowledge to partner with you on an upgrade strategy that will help you maximize your competitive advantage.

Rockwell Automation and its partners will work with you to outline a plan that fits your application needs and long-term goals. We can help you migrate all at once or in phases, at the pace that is comfortable for you and fits your budget.

With your goals in mind, Rockwell Automation has developed a migration strategy that will allow you to quickly and easily migrate from SLC-based control to Logix-based control and Integrated Architecture, while maintaining the existing field wiring. This approach will:

- Lower conversion time and labor costs
- Reduce risk by preserving existing field wiring connections
- Lower engineering costs
- Minimize production downtime

LISTEN.  
THINK.  
SOLVE.

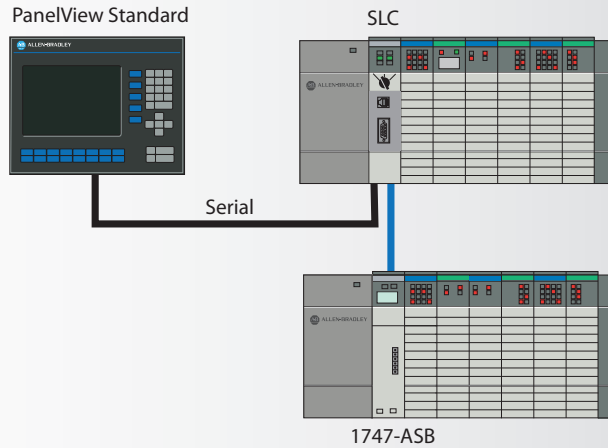
# Supporting Your Investment Through a Phased Migration

With industry knowledge and worldwide services support, Rockwell Automation will partner with you to ensure a smooth transition from your SLC controllers to the flexible, scalable Integrated Architecture. Here's how:

## STEP 1: Document your Current System Layout and Define your Future System Requirements

Begin planning your migration by documenting your existing system as a reference point. This will enable you to consider the available options and find a solution that best meets your existing and future requirements. The PLC-5/SLC Interactive Migration Planner will step you through phased migration options offered by Rockwell Automation.

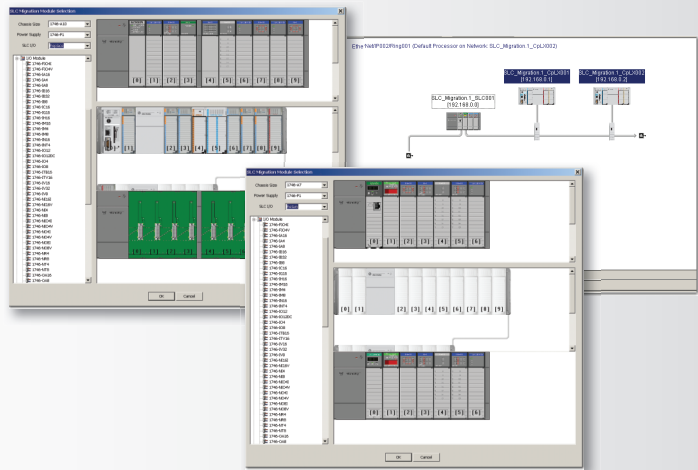
*Tools: Installed Base Evaluation, PLC-5 & SLC Interactive Migration Planner, Conversion & Migration Services*



## STEP 2: Plan your Migration

Once you have planned your overall migration approach, let Integrated Architecture Builder (IAB) help plan the details. The SLC migration wizard embedded in IAB will step you through the system configuration process, allowing you to make the decisions on which components you prefer to keep and reuse and which components you prefer to replace. If you choose to reuse the SLC I/O, IAB will verify module support and power supply loading and help you layout the new EtherNet/IP network.

*Tools: Integrated Architecture Builder (IAB), Popular Configuration Drawings, Conversion & Migration Services*



## STEP 3: Application Code Conversion

Save time and engineering resources by using the embedded conversion utilities for both PLC and HMI applications. RSLogix™ 5000 design and configuration software allows you to convert your existing RSLogix 500 program to RSLogix 5000 code. Graphic conversion utilities Conversion utilities are available for PanelView Enhanced, PanelView Standard and non-Rockwell Automation HMIs. Using these tools makes the conversion much more cost effective as well as provides greater flexibility regarding the final product.

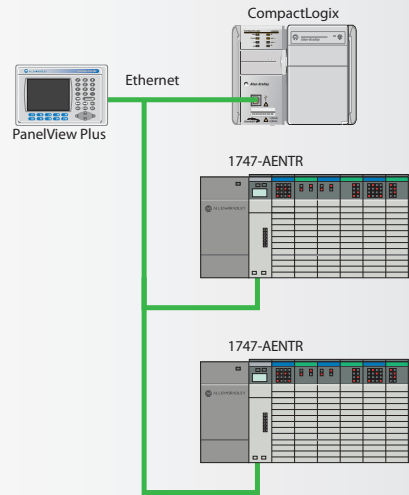
*Tools: RSLogix 5000 and graphic conversion utilities, Conversion & Migration Services*



#### STEP 4: Replace the SLC Processor and/or Adaptor Modules

Mount and wire the CompactLogix system and replace the SLC first slot modules (SLC processor or communication adaptor module) with the SLC Ethernet adaptor (1747-AENTR). Utilizing this module allows you to retain your existing SLC I/O and preserve existing field wiring, while allowing your SLC I/O chassis to be controlled from your new CompactLogix controller. This approach simplifies the migrations process, reduces risks associated with rewiring the I/O, and saves valuable time allowing you to quickly get your application into production.

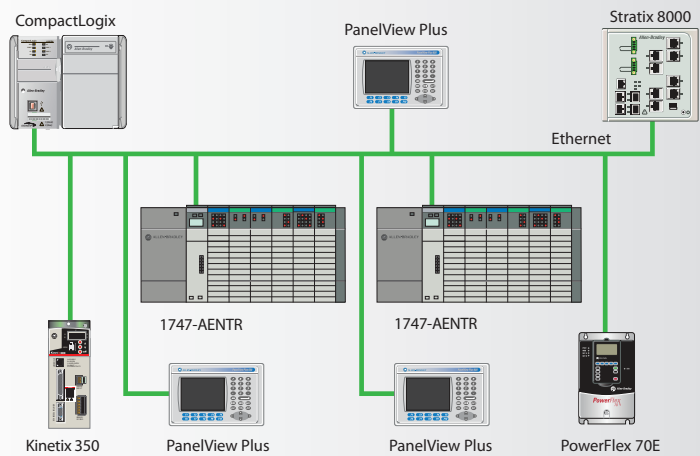
*Tools: 1747-AENTR Ethernet adaptor, CompactLogix User Manual, Conversion & Migration Services*



#### STEP 5: Replace the Operator Interface or other System Components

Because Rockwell Automation is a comprehensive supplier, we can help with other products and services. If your control system has legacy or competitive variable speed drives, motion control, sensors or motor control centers we can discuss how we can help migrate those products as well. But it doesn't stop there. We have a worldwide service group that can do the migration work, assist and train operators or provide the maintenance services once it's complete. We can also review your network needs and review asset management for your entire facility.

*Tools: Conversion & Migration Services*



#### 1747-AENTR Ethernet Adaptor

The SLC Ethernet Adaptor (1747-AENTR) allows SLC I/O racks to be controlled by any Logix Programmable Automation Controller (PAC):

- Must be located in the first slot (slot 0) of an SLC rack
  - Replaces the existing SLC processor
  - Replaces the existing RIO adaptor (1747-ASB) in remote racks
  - Replaces ControlNet adaptor (1747-ACN15, 1747-ACNR15) in remote racks
- Requires RSLogix 5000 v20 or greater and SLC I/O electronic data sheet files
- Supports various network topologies
  - Connects to new or existing Logix controller
  - Device Level Ring (DLR), star and linear Ethernet topologies



## Complete Conversion Services

In any phase of your conversion project, Rockwell Automation can provide you with technical, industry and project management expertise to help make a migration project easier. We will help you design a plan to account for your short- and long-term goals. You will be assigned a primary engineer who will be responsible for coordinating and scheduling implementation activities and resources, and who will also be the primary communications contact.

### On-site Assessment

Using standardized checklists and processes, a job site visit will be performed to confirm the project scope, validate risks, review testing and acceptance criteria, and gather the required information and software to convert existing screens and configurations.

#### You will receive:

- Completed risk assessment form
- Bill of materials
- Conversion acceptance criteria
- Project schedule and timeline
- Required information sent to conversion engineer team

### Application Conversion Engineering Services

Using custom-developed proprietary software applications designed to convert existing configurations, our engineers will complete and test the screen conversion process and any required PLC code changes necessary.

#### We can help you:

- Decrease turn-around time
- Save money
- Minimize errors that can occur in a manual conversion

#### Deliverables include:

- The existing console and configurations converted to the appropriate Logix controller and FactoryTalk products
- Conversion of the documentation database
- Correct and convert any instruction and/or addressing errors to the new processor family
- Multilingual database conversion offered

### Start-up and Acceptance

Prior to installation, comprehensive functional testing will be performed including pre-loading of all applicable software and firmware. Once installation is complete, our engineer, working closely with your plant staff, will conduct an operational compliance review. Comprehensive system documentation will be provided upon project acceptance.

#### Deliverables include:

- Pre-operational checklist
- Operational test performed and validated by customer
- Customer acceptance
- Necessary documentation, including product sheets and software files

### If you need additional help, Rockwell Automation can provide:

**Application level phone support** during the start-up and debugging phase of the project

**Consultation** on system re-engineering, operator interface, architecture and communication strategies, training, and on-site start-up is available through our local Rockwell Automation office.

[www.rockwellautomation.com](http://www.rockwellautomation.com)

#### Power, Control and Information Solutions Headquarters

Americas: Rockwell Automation, 1201 South Second Street, Milwaukee, WI 53204-2496 USA, Tel: (1) 414.382.2000, Fax: (1) 414.382.4444

Europe/Middle East/Africa: Rockwell Automation NV, Pegasus Park, De Kleetlaan 12a, 1831 Diegem, Belgium, Tel: (32) 2 663 0600, Fax: (32) 2 663 0640

Asia Pacific: Rockwell Automation, Level 14, Core F, Cyberport 3, 100 Cyberport Road, Hong Kong, Tel: (852) 2887 4788, Fax: (852) 2508 1846