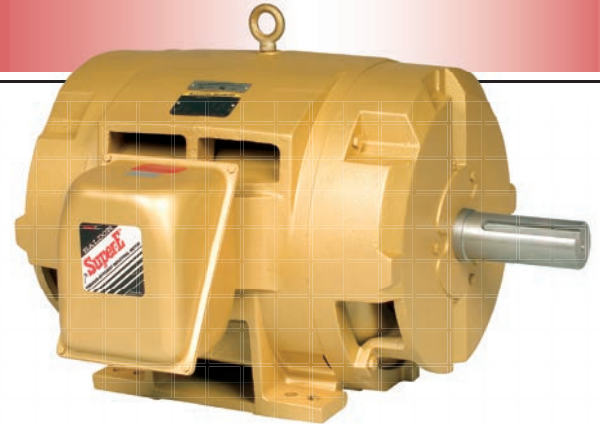


Ammonia Compressor Motors

Three Phase, 2 Pole

Open Drip Proof



Applications:

Ammonia compressor and refrigeration

Common Features:

- Open Drip Proof
- 3600 RPM (2-Pole)
- 1.15 Service Factor at 40°C Ambient
- NEMA Class “F” Insulation with NEMA Class “B” temperature rise
- High Efficiency Designs
- NEMA Locked Rotor kVA Code “G”
- Rated for Across the Line Start
- Motors designed to meet or exceed NEMA Standard Vibration Levels

Low Voltage Features:

- 150 thru 600HP
- 460V, 60HZ
- 404 thru 505 Frame
- NEMA Premium Efficient up to 500HP
Meets NEMA Table 12-12
- NEMA TS Shaft ¹
- Wye-Delta Connection
- NEMA “B” Torque Values
- Inverter Ready

Medium Voltage Features:

- 400 thru 1000HP
- 2300/4160V, 60HZ
- 5008 thru 5810 Frame
- High Efficiency Designs
- (S) Type Shaft for Coupled Duty Loads
- Torque Values Exceeding Industry Standards ²
 - Starting Torque of 100% or greater
 - Pull Up Torque of 80% or greater
 - Break Down Torque of 250% or greater
- Provisions for Vibration Detection

¹ For ratings in frame sizes 5008 and larger motors will have standard (S) shafts for coupled loads. Please reference drawings for shaft dimensions.

² Torque values are expressed as a % of Full Load Torque

BALDOR®

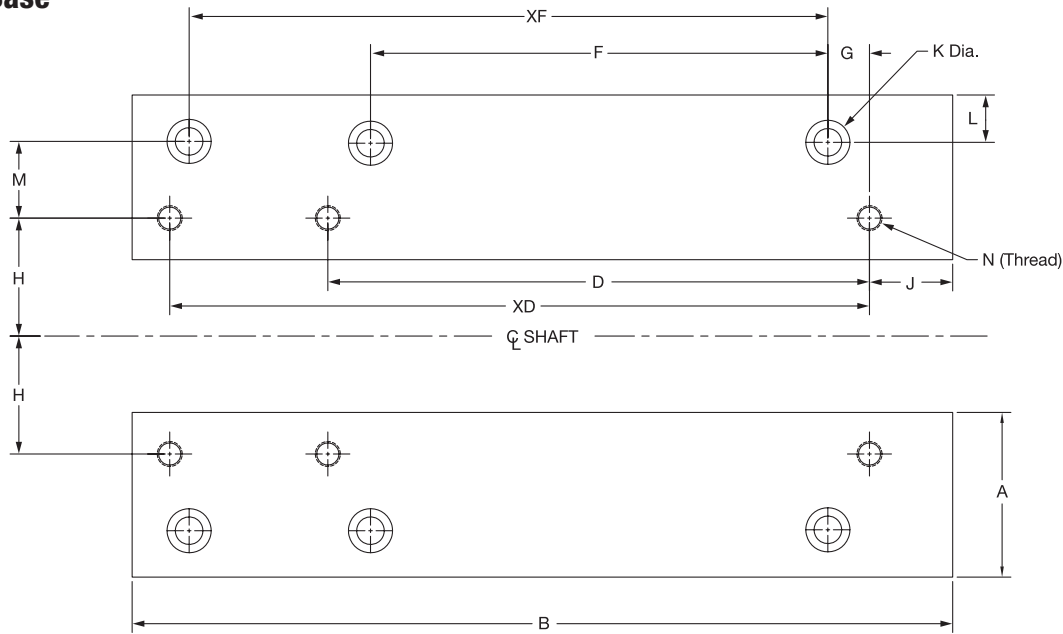
A MEMBER OF THE ABB GROUP

**Ammonia Compressor Motor, Three Phase, 2 Pole, Open Drip Proof
150 thru 1000 HP, NEMA 404 thru 5810 Frame**

Three Phase, ODP, Foot Mounted

HP	RPM	Frame	Catalog Number	List	Mult. Sym.	"C" Dim.	Aprx. Wt. (lb)	Full Load Efficiency	Voltage	Full Load Amps
Low Voltage										
150	3600	404/5TS	EM251152T-4	\$13,117	L1	31	1140	95.4	460	167
200	3600	444/5TS	EM251202T-4	\$14,864	L1	35.81	1737	95.4	460	221
250	3600	444/5TS	EM251252T-4	\$17,437	L1	35.81	1539	95.4	460	274
300	3600	447TSS/TS	EM251302T-4	\$27,254	L1	39.31	1899	95.4	460	334
350	3600	447TSS/TS	EM251352T-4	\$31,190	L1	39.31	1899	95.4	460	381
400	3600	449TS	EM251402T-4	\$36,592	L1	44.31	2083	96.2	460	431
450	3600	449TS	EM251452T-4	\$40,294	L1	44.31	2083	96.2	460	494
500	3600	449TS	EM251502T-4	\$44,548	L1	39.37	2595	96.2	460	544
600	3600	5010	M250602S-4	\$47,729	LG	56.50	4200	95.6	460	673
Medium Voltage										
400	3600	449TS	M244402TS-2341	\$32,791	LG	44.38	4000	95.0	2300/4160	87/48.9
500	3600	5008	M250502S-2341	\$45,766	LG	49.50	3200	94.8	2300/4160	111/61.9
600	3600	5010	M250602S-2341	\$47,564	LG	56.50	4200	95.2	2300/4160	131/72.7
700	3600	5010	M250702S-2341	\$49,901	LG	56.50	4200	95.2	2300/4160	153/85.3
800	3600	5810	M258802S-2341	\$64,295	LG	65.81	7000	95.0	2300/4160	177/98.9
900	3600	5810	M258902S-2341	\$71,196	LG	65.81	7000	95.2	2300/4160	199/111
1000	3600	5810	M2581002S-2341	\$77,398	LG	65.81	7000	95.2	2300/4160	254/141

Conversion Base



Conversion Base Dimension Diagram

Catalog Number	Converts From	Converts To	List	Mult. Sym.	Height Inches	A	B	D	XD	F	XF	G	H	J	K	L	M	N (Thread)
CB5049T	505	449	\$1,054	A8	1.50	4.50	28.00	25.00	-	18.00	-	1.00	9.00	1.50	0.937	1.50	1.00	3/4-10
CB5850S	5808/10	5008/10	\$3,340	A8	1.875*	6.50	44.88	25.00	32.00	28.00	36.00	2.50	10.00	2.88	0.906	2.75	1.50	3/4-10
CB5850M	5810/11	5008/10	\$3,389	A8	1.875*	6.50	50.00	25.00	32.00	36.00	40.00	3.50	11.50	2.88	0.91	2.75	1.50	3/4-10

* Based designed to allow for alignment shims up to 0.125 inches.



A MEMBER OF THE ABB GROUP

Baldor Electric Company

P.O. Box 2400 • Fort Smith, AR 72902-2400 U.S.A. • Phone (479) 646-4711 • Fax (479) 648-5792

www.baldor.com