

# **BALDOR**® • *RELIANCE*

## Product Information Packet

# **EM251252S-2340**

**1250HP,3600RPM,3PH,O5810,WPII**

Part Detail							
Revision:	G	Status:	PRD/A	Change #:		Proprietary:	No
Type:	AC	Elec. Spec:	A58WG0010	CD Diagram:	416820-004	Mfg Plant:	
Mech. Spec:		Layout:	616852-072	Poles:	02	Created Date:	05-03-2010
Base:		Eff. Date:	02-15-2017	Leads:	6#1/0		Y

Specs			
Catalog Number:	EM251252S-2340	KVA Code:	E
Enclosure:	WPII	Motor Lead Quantity/Wire Size:	6 @ 1/0 AWG
Frame:	5810	Motor Lead Termination:	Flying Leads
Frame Material:	Iron	Motor Type:	A58164M
Output @ Frequency:	1250.000 HP @ 60 HZ	Mounting Arrangement:	F1
Synchronous Speed @ Frequency:	3600 RPM @ 60 HZ	Product Family:	General Industrial
Voltage @ Frequency:	2300.0 V @ 60 HZ	Pulley End Bearing Type:	Sleeve
	4000.0 V @ 60 HZ	Pulley Face Code:	Standard
Agency Approvals:	CCSA US	Pulley Shaft Indicator:	Standard
Bearing Grease Type:	Oil,Mobil DTE Light, HC9266	Shaft Extension Location:	Pulley End
Current @ Voltage:	160.000 A @ 4000.0 V	Shaft Ground Indicator:	No Shaft Grounding
	278.000 A @ 2300.0 V	Shaft Rotation:	Reversible
Duty Rating:	CONT	Shaft Slinger Indicator:	Shaft Slinger
Electrically Isolated Bearing:	Not Electrically Isolated	Speed Code:	Single Speed
Feedback Device:	NO FEEDBACK	Motor Standards:	NEMA
Front Face Code:	Standard	Starting Method:	Direct on line
Front Shaft Indicator:	None	Thermal Device - Bearing:	None
Heater Indicator:	Heater Included, 120 V	Thermal Device - Winding:	RTD Only

<b>Insulation Class:</b>	F	<b>Vibration Sensor Indicator:</b>	No Vibration Sensor
<b>Inverter Code:</b>	Not Inverter	<b>XP Temp Code:</b>	T3A

Nameplate 000613000YV											
FRAME	5810		ENERGY			EFFICIENT	KMO58-1252S-2340			IDENTIFICATION NO.	
HP	1250					TYPE			CLASS	F	
RPM	3573					AMB.	40C				
VOLT	2300/4000		S.F.	1.15							
AMPS	278/160					DUTY	40C AMB-CONT				
DES	-	CODE	E	PH	3	HZ	60	ENCL	WPII		
DRIVE END BEARING									OPP DRIVE END BEARING		

Nameplate 000613007QB											
ENERGY EFFICIENT		SERIAL NO.									
CATALOG NO.	EM251252S-2340			SPEC NO.	KMO58-1252S-2340						
HP	1250	RPM	3573	FRAME	5810	HZ	60	SERVICE FACTOR	1.15		
VOLTS	2300/4000		F.L. AMPS	278/160		PHASE	3	TYPE	P	ENCL.	WPII
NEMA NOM. EFF	95.4	F.L.P.F.	88/87		MOTOR WEIGHT	7030		INSUL.CLASS	F		
DESIGN	-	NEMA CODE	E		MAX AMBIENT	40	DUTY	CONT			
	80	C RISE/	RES.	AT	HP	1250	AMPS	278/160			
D.E. BRG.	SLEEVE				O.D.E. BRG.	SLEEVE					
WDG. THERMAL	100 OHM PLATINUM		QTY.	6							
LUBE	MOBIL DTE LIGHT OIL										
VOLTS	120/240	AMPS	4.1/2.04		WATTS	490	QTY	2			
CERTIFICATE OF COMP NO.	LR53258										

Nameplate 000692000ET	

Nameplate 000692000UY

T. CODE T3A

CL I DIV 2 GR C &amp; D

MOTOR I.D. NO.

CL II DIV 2 GR

Parts List		
Part Number	Description	Quantity
SA195253	SA KMO58-1252S-2340	1.000 EA
RA183032	RA KMO58-1252S-2340	1.000 EA
482413004Y	#4 SLEEVING (GREEN) PER FT	12.000 FT
041009038K	TERM LUG- WESCO K3/0-PS-L	6.000 EA
069306003B	CABLE TIE 14 T&B L14509C	9.000 EA
419512012SG	LABELS, HEAT SHRINK SET	1.000 EA
424731030B	HEATER LAC	2.000 EA
482413004Y	#4 SLEEVING (GREEN) PER FT	12.000 FT
606800016L	RTD LAC	7.000 EA
032620040PA	SKHD SSCR STAT BT	4.000 EA
032018006BK	HHCS 5/16-18X3/4 PLATED	14.000 EA
032018010DG	HHCS 1/2-13X1-1/4 316SS	4.000 EA
032018010DK	HHCS 1/2-13X1-1/4 PLATED	4.000 EA
032018020FK	HHCS 3/4-10X2-1/2 PLTD.	4.000 EA
032126002JD	SHHCS UNSED HOLES-added to b/s 6/5	8.000 EA
032018020FK	HHCS 3/4-10X2-1/2 PLTD.	6.000 EA
032018020FK	HHCS 3/4-10X2-1/2 PLTD.	4.000 EA
032126002JD	SHHCS UNSED HOLES-added to b/s 6/5	8.000 EA
032375004JB	SLRHMS 10-24X1/2 PLTD-320	4.000 EA
032018020FK	HHCS 3/4-10X2-1/2 PLTD.	6.000 EA
032375004JB	SLRHMS 10-24X1/2 PLTD-320	4.000 EA
032018010DK	HHCS 1/2-13X1-1/4 PLATED	4.000 EA
032018010DK	HHCS 1/2-13X1-1/4 PLATED	12.000 EA
032375005HE	#8-32 X 5/8 SL RHMS	8.000 EA

Parts List (continued)		
Part Number	Description	Quantity
033036022CH	BAFFLE STUD	4.000 EA
033036022CH	BAFFLE STUD	4.000 EA
033079448ZZ	STUD MOTOR LIFT	2.000 EA
033102014AB	NUT 3/8-16 PLATED	4.000 EA
033102014AB	NUT 3/8-16 PLATED	4.000 EA
033240001H	EYENUT MOTOR LIFT	2.000 EA
033500006MB	5/16-18 X 3/4 HX WHMS	2.000 EA
033775004EA	DRSCR #6-1/4 304 S.S.	8.000 EA
033500006MB	5/16-18 X 3/4 HX WHMS	2.000 EA
033775004EA	DRSCR #6-1/4 304 S.S.	8.000 EA
034000013AB	WSHR 5/16" PLATED-440	14.000 EA
034000016AB	WSHR .531ID 1.062OD .095	4.000 EA
034000016AB	WSHR .531ID 1.062OD .095	12.000 EA
034000016AB	WSHR .531ID 1.062OD .095	4.000 EA
034000032AB	FTW 1 1/2 - ZINC PL. STEEL	2.000 EA
034017014AB	LCKW 3/8 STD. PLATED	4.000 EA
034017014AB	LCKW 3/8 STD. PLATED	4.000 EA
034017016AB	LCKW 1/2" PLATED	4.000 EA
034530010DB	1/2 X 1.25 PIPE NIPPLE	8.000 EA
034692001AB	HCSPP 1/8" PLATED	3.000 EA
034692002AB	HCSPP 1/4" PLATED	2.000 EA
034692004AB	1/2 PIPE PLUG	3.000 EA
034692006AB	1" PIPE PLUG	1.000 EA
034692008AB	1-1/2" PIPE PLUG	1.000 EA

Product Information Packet: EM251252S-2340 - 1250HP,3600RPM,3PH,O5810,WPII

034692002AB	HCSPP 1/4" PLATED	4.000 EA
034530010DB	1/2 X 1.25 PIPE NIPPLE	8.000 EA
034692001AB	HCSPP 1/8" PLATED	3.000 EA
034692002AB	HCSPP 1/4" PLATED	2.000 EA
034692004AB	1/2 PIPE PLUG	3.000 EA
034692006AB	1" PIPE PLUG	1.000 EA
034692008AB	1-1/2" PIPE PLUG	1.000 EA
034692002AB	HCSPP 1/4" PLATED	4.000 EA
041009000FD	T-LUG(ALTERNATE -7D)	6.000 EA
041009003D	T & B LUG (A116)	18.000 EA
041009003F	TERMINAL LUG	4.000 EA
064185096A	LOWER VENT HOSE	1.000 EA
064185096B	LOWER VENT HOSE	1.000 EA
064185096C	UPPER VENT HOSE	1.000 EA
064185096D	UPPER VENT HOSE	1.000 EA
401161000AA	HOSE CLAMP	8.000 EA
401707000AC	OIL RING 5.5" ID X .31" W	2.000 EA
401746002A	W/RUBBER CHANNEL, LAC	7.000 FT
406273000F	OIL GAGE	1.000 EA
406273007C	OIL LVL GAGE,FE	1.000 EA
064185096A	LOWER VENT HOSE	1.000 EA
064185096B	LOWER VENT HOSE	1.000 EA
064185096C	UPPER VENT HOSE	1.000 EA
064185096D	UPPER VENT HOSE	1.000 EA
401161000AA	HOSE CLAMP	8.000 EA
401707000AC	OIL RING 5.5" ID X .31" W	2.000 EA

Product Information Packet: EM251252S-2340 - 1250HP,3600RPM,3PH,O5810,WPII

401746002A	W/RUBBER CHANNEL, LAC	7.000 FT
406273000F	OIL GAGE	1.000 EA
406273007C	OIL LVL GAGE,FE	1.000 EA
415915006A	GASK, LAC	10.000 EA
415917004A	N/P	1.000 EA
417216003A	SHIM (3.00 THK WALL BRG)	2.000 EA
417244001C	RETAINER (SLV BEARING)	2.000 EA
419512012RC	Lead Markers H1, H2, H3 & ZH4.	1.000 EA
417216003A	SHIM (3.00 THK WALL BRG)	2.000 EA
417244001C	RETAINER (SLV BEARING)	2.000 EA
424732012A	GASKET (PURCH)	1.000 EA
424732012A	GASKET (PURCH)	1.000 EA
424732001A	GASK, CVR PLATE, LAC	3.000 EA
424732003A	GASK, LAC	2.000 EA
424732005A	GASK, LAC	2.000 EA
424732006A	GASKET (PURCH)	2.000 EA
424732007A	GASK, TB SPACER	1.000 EA
424732008A	GASK, LAC	1.000 EA
424732009A	GASK, LAC	1.000 EA
424732014A	GASK, LAC	1.000 EA
482413003Y	#3 SLEEVING (GREEN)	3.000 FT
482413004Y	#4 SLEEVING (GREEN) PER FT	30.000 FT
606833042A	OIL GAGE	1.000 EA
606833042A	OIL GAGE	1.000 EA
616848002A	MTG PLT TERM BLK	1.000 EA
616848501A	SUPPORT T/BLK	1.000 EA

Product Information Packet: EM251252S-2340 - 1250HP,3600RPM,3PH,O5810,WPII

750210507R	BAFFLE CONN. END	1.000 EA
750213502A	LEAD CHANL FRAME	1.000 EA
750222001WPA	SHROUD, LAC	1.000 EA
750222001WPA	SHROUD, LAC	1.000 EA
807488507A	CVR AIR INLET	2.000 EA
807488508A	BRACKET FE	1.000 EA
807488508A	BRACKET FE	1.000 EA
807489501R	HOOD WPII/L.NOISE	1.000 EA
807490501R	SIDE HOOD, LN WPII	2.000 EA
482413004Y	#4 SLEEVING (GREEN) PER FT	30.000 FT
406116000WK	SLINGER (BRASS)	1.000 EA
415916013H	T/BLK S/HTR LAC	2.000 EA
704087003A	SHAFT CAP	1.000 EA
750211014A	CVR FRAME	2.000 EA
750212502A	AUXILIARY BOX	1.000 EA
750223007R	BAFFLE OPP. CONN.	1.000 EA
032018006DG	1/2-13 X 3/4 HHCS (S	1.000 EA
033102012AE	NUT 1/4-20/316S.S-449	12.000 EA
034017016AC	LCKW 1/2 MED.316S.S.	1.000 EA
417247001B	THREADED STUD(SS)	12.000 EA
418199008B	N/P	1.000 EA
705500006C	GASK, TERM BOX, LAC	1.000 EA
705500006C	GASK, TERM BOX, LAC	1.000 EA
705500006P	GASK, TERM BOX, LAC	1.000 EA
705500266R	T/BOX FRAME	1.000 EA
705500266XA	BACKPLATE T/BOX	1.000 EA

Product Information Packet: EM251252S-2340 - 1250HP,3600RPM,3PH,O5810,WPII

032018008DB	1/2-13 X 1.0 HHCS	4.000 EA
033775012EA	DR. SCR.SUMP VENT	16.000 EA
034690005AB	PPLG 3/4 PLATED	2.000 EA
034690008AB	PPLG 1-1/2 PLTD.	1.000 EA
419306129A	N/P- Make Hee	1.000 EA
419306129B	N/P- Make at RKN	1.000 EA
424732002A	GASK, TBOX MTG	1.000 EA
704087002A	SHAFT CAP, LAC	1.000 EA
750211002WCA	AUX BOX COVER O5800	1.000 EA
750211010B	SUMP VENT SCREEN	8.000 EA
750211010C	SUMP VENT SCREEN	8.000 EA
000613000YV	DUTY MASTER A-C MTR N/P ENERGY EFFICIENT	1.000 EA
000613007HA	N/P	2.000 EA
000613007QB	SS DUTY MASTER CSA-C US	1.000 EA
000692000CL	N/P	1.000 EA
000692000ER	NAME PLATE	1.000 EA
000692000ET	MOTOR MAGNETIC CENTER LINE	1.000 EA
000692000FR	WARNING, HIGH VOLTAGE LABEL	1.000 EA
000692000SC	N/P	5.000 EA
000692000UY	N/P	1.000 EA
000692000VG	N/P	2.000 EA
001767000CC	N/P	1.000 EA
033775004EA	DRSCR #6-1/4 304 S.S.	4.000 EA
033775004EA	DRSCR #6-1/4 304 S.S.	16.000 EA
034180032JA	KEY 3/4X3/4X4L- BS	1.000 EA
406255145A	N/P	2.000 EA

Product Information Packet: EM251252S-2340 - 1250HP,3600RPM,3PH,O5810,WPII

406991001TB	N/P	1.000 EA
419505001A	TAG (RE-337M2) BALDOR "WARNING"	2.000 EA
482403000AKW	SPRAYLAT EXABE165S -USE-WT	1.000 GA
482415000A	GREASE (MOBIL POLYREX EM)	1.700 LB
482403000ANA	LT GREEN PT MSDS#P3010	0.300 GA
606951012R	SHIPPING SKID G58 ECP MODEL NUMBERS	1.000 EA

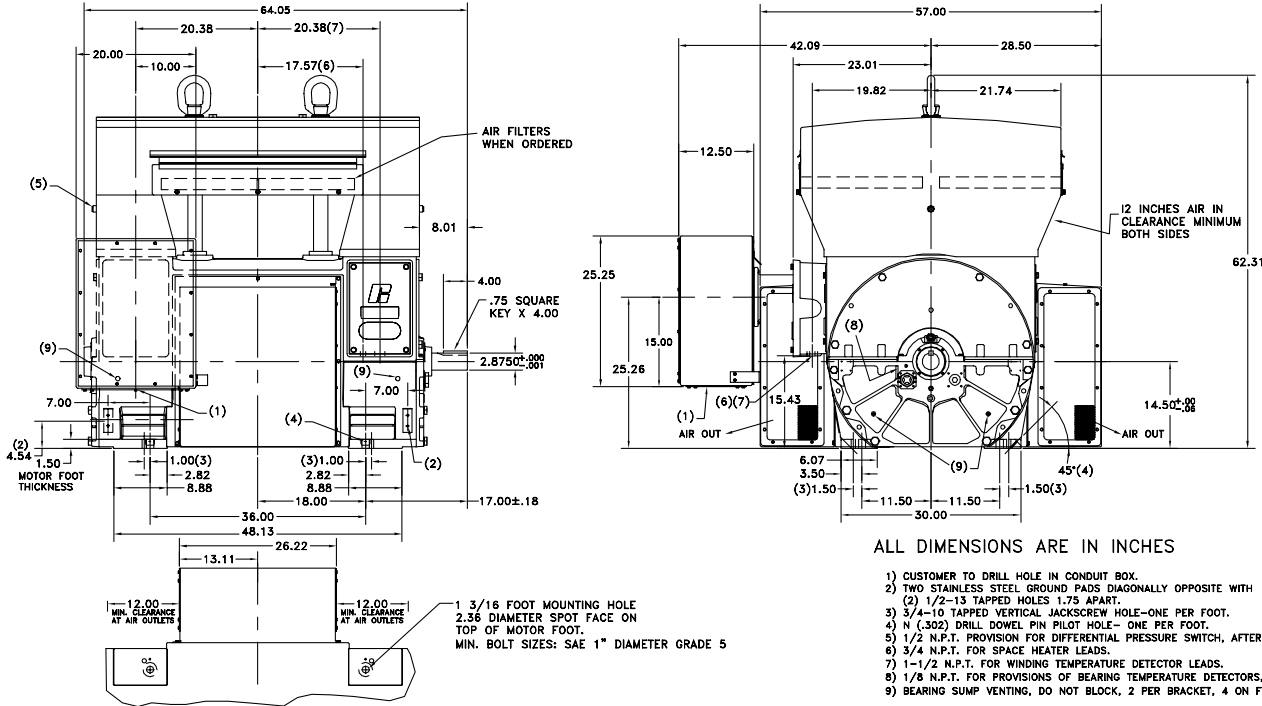
**DUTY MASTER ALTERNATING CURRENT MOTORS**

ENCLOSURE: WEATHERPROTECTED II  
 FRAME SIZE 5810  
 MOUNTING: FOOT

SQUIRREL-CAGE INDUCTION  
 3600 RPM MAX  
 ENGLISH HARDWARE

COOLING: SELF-VENTILATED  
 SLEEVE BEARINGS  
 OVERSIZE TERMINAL BOX

616852-072



ALL DIMENSIONS ARE IN INCHES

- 1) CUSTOMER TO DRILL HOLE IN CONDUIT BOX.
- 2) TWO STAINLESS STEEL GROUND PADS DIAGONALLY OPPOSITE WITH
- (2) 1/2-13 TAPPED HOLES 1.75 APART.
- 3) 3/4-10 TAPPED VERTICAL JACKSCREW HOLE-ONE PER FOOT.
- 4) N (.302) DRILL DOWEL PIN PILOT HOLE- ONE PER FOOT.
- 5) 1/2 N.P.T. PROVISION FOR DIFFERENTIAL PRESSURE SWITCH, AFTER FILTERS.
- 6) 3/4 N.P.T. FOR SPACE HEATER LEADS.
- 7) 1-1/2 N.P.T. FOR WINDING TEMPERATURE DETECTOR LEADS.
- 8) 1/8 N.P.T. FOR PROVISIONS OF BEARING TEMPERATURE DETECTORS, BOTH ENDS.
- 9) BEARING SUMP VENTING, DO NOT BLOCK, 2 PER BRACKET, 4 ON FRAME

FLOAT OF SLEEVE BEARING SHAFT = .500 MINIMUM - .585 MAXIMUM.  
 IF MOUNTING CLEARANCE DETAILS ARE REQUIRED, CONSULT FACTORY.  
 MAXIMUM MOTOR WEIGHT = 7700 LBS  
 TORQUE MOTOR FOOT BOLT TO 125 +25/-00 LB-FT.  
 OIL SUMP CAPACITY 1.5 QUARTS, EACH BEARING.

ENGR.REF.MODEL # KM058-1252-2340

CUSTOMER IS RESPONSIBLE FOR DETERMINING THAT BALDOR'S PRODUCT WILL PERFORM SUITABLY IN THE INTENDED APPLICATION.

REV. DESC: REMOVE REFERENCE TO LIBERATOR	VERSION: 01	TDR: 000000499087
REV. LTR: A	REVISED: 16:04:48 05/27/2009	BY: CONNAM
FILE: \RSN\00007\528		
MTL: -		

**BALDOR • DODGE • RELIANCE**

O5810,WPII,CLPD,3600,SLV,F1,20X25X12,U=2.875,XBA=17.00

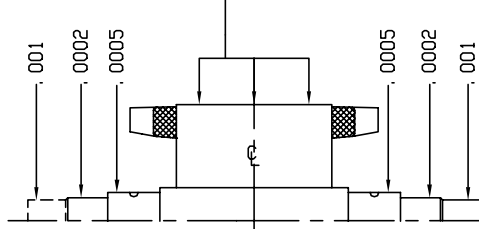
SH 1 of 1

616852-072

419520-001

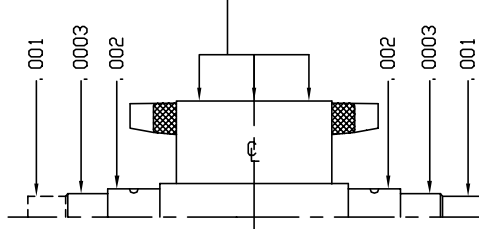
ASSEMBLED ROTOR RUN-OUT LIMITS

ABOVE 3000 RPM \* .003' A' DIAMETER (3600 & 3000 RPM)



ALLOWABLE RUN-OUT (TIR) IN V BLOCKS AND IN CENTERS

3000 RPM & BELOW \*\* .003' B' DIAMETER (1800 RPM)  
 \*\* .004' C' DIAMETER (1200 RPM AND SLOWER)



ALLOWABLE RUN-OUT (TIR) IN CENTERS AND IN V BLOCKS

THE FOLLOWING NOTES ARE APPLICABLE TO LARGE AC ONLY - NOT JOY 'J' FRAME ROTORS

- \* A. IF ROTOR O. D. IS TURNED, 100% CLEAN-UP OF CORE IS REQUIRED. IF ROTOR O. D. MEETS SIZE AND RUN-OUT AS PUNCHED, NO TURNING OF O. D. REQUIRED.
- \*\* B. IF ROTOR O. D. IS TURNED, A MINIMUM OF 70% CLEAN-UP OF CORE REQUIRED. IF ROTOR O. D. MEETS SIZE AND RUN-OUT AS PUNCHED, NO TURNING OF O. D. REQUIRED.

419520-001

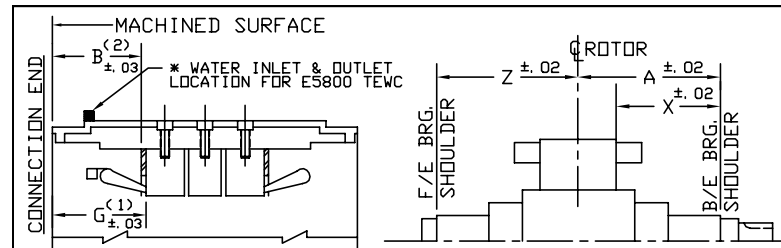
REV. DESC: LOADED TO BUS		
REV. LTR: -	VERSION: 00	TDR: 000000530447
FILE: \RSN\00017\210	REVISED: 07: 44: 12 02/26/2010	
MTL: -	BY: RAGBRP	

**BALDOR • DODGE • RELIANCE**

ASSEMBLED ROTOR LAYOUT LIMITS

SH 1 of 1

422496-001



(1) 'G' DIM IS TO STATOR IRON. QUANTITY & DUCT SPACING WILL VARY, INCLUDING NO DUCTS.  
 (2) 'B' DIM IS TO LASER BURNED END PLATE.

FOR INSTRUCTIONS ON LOCKING STATOR CORE TO FRAME, SEE TABLE BELOW:

FR. SIZE	ENCL.	A/F BRG.	SLEEVE BRG.
447/449	PRDT/TEFC	604955-1/604955-2	
EM4412	TEFC	612783-2	
EM5000	TEFC	612783-2	
E5000	PRDT-WPI&II	704078-1 & 2	704078-1 & 2
E5000	TEFC	E5010-800465-2 HORIZ, -5 VERT E5012-800478-2	E5010-800465-2 E5012-800478-2
E5000	WATER	708307-3	
E5800	PRDT-WPI&II	704098-1	704098-1
E5800	TEFC	610827-5 & 6	
E7111	PRDT-WPI&II	705529-6	705529-6
E9450	PRDT-WPI&II	705529-6	705529-6
E9500	PRDT-WPI&II	705529-6	705529-6
GM9500/MG50	TEFC	615314-1	615314-1
E5800	TEWC*	708307-3 SEE NOTE*	
GS9500/SG50	TEFC	615314-2	615314-2
G400 J&H G5810	TEFC	615314-3	
G5000/G31S	TEFC	616838-1 ROTOR 616837-1 STATDR	616838-1 ROTOR 616837-1 STATDR
D5800	PRDT-WPI&II	750219-3 STATDR 750219-4 ROTDR	750219-3 STATDR 750219-4 ROTDR
G400 L&K	TEFC	616149-2 ROTDR 615314-4 STATDR	616149-2 ROTDR 615314-4 STATDR
D6800	PRDT-WPI&II	750219-100 STATDR 750219-101 ROTDR	750219-100 STATDR 750219-101 ROTDR

REV. DESC: ADDED 06800		
REV. LTR: A	VERSION: 01	TDR: 000000868758
FILE: \RSN\00017\343	REVISED: 02:40:31 10/16/2014	BY: RSNMJB
MTL: -	⊙ ⊐	

**BALDOR**

INSTRUCTIONS ON LOCKING STATOR CORE TO FRAME

SH 1 of 1

422496-001

704077-146

**RTD INSTALLATION INSTRUCTIONS - WINDING**

TOLERANCE UNLESS OTHERWISE SHOWN  
 ONE PLACE DECIMAL ±.1  
 TWO PLACE DECIMAL ±.02  
 THREE PLACE DECIMAL ±.003  
 ANGLE ±0°-30°  
 SURFACE FINISH 250

- I. **BEFORE INSTALLING RTD'S:**
  - A. MEASURE COLD RESISTANCE. VERIFY RESISTANCE IS WITHIN LIMITS SPECIFIED ON RTD DRAWING.
  - B. VERIFY NUMBER OF RTD'S AND MOTOR SERIES FROM SALES ORDER, AND DETERMINE APPLICABLE FIGURE. 1-4.
- II. **INSTALL RTD'S AS FOLLOWS:**
  - A. INSERT ONE RTD PER SLOT BETWEEN TOP AND BOTTOM COILS WITH LEADS OUT OPPOSITE CONNECTION END.
  - B. LOCATE RTD PER FIGURE 5. FILL REMAINING PORTION OF SLOT WITH PARTIAL MIDSTICK.
  - C. TIE RTD LEADS TO OUTSIDE OF OUTER BRACER ROPE PER FIGURE 5.
  - D. BRING ALL RTD LEADS OUT TO A COMMON AREA PER FIGURE 6.
  - E. LABEL RTD LEADS WITH SHRINK MARKERS SPECIFIED ON SALES ORDER AND PER APPLICABLE FIGURE 1-4.
  - F. FEED LEADS THROUGH TO OPPOSITE END AND TIE WITH PLASTIC TIE TO COIL FOR PROCESSING THROUGH VPI AND DVEN ROOM.
- III. **REMEASURE AND RECORD COLD RESISTANCE AFTER COMPLETED CONNECTION. VERIFY RESISTANCE IS WITHIN LIMITS SPECIFIED ON RTD DRAWING.**

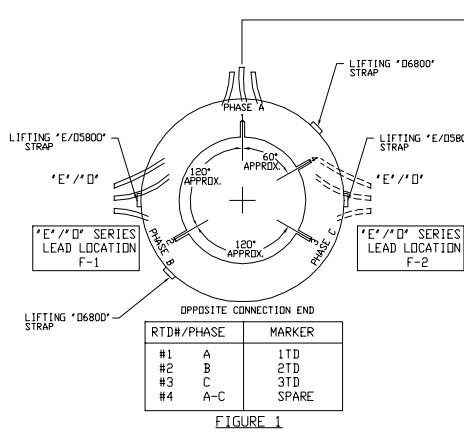


FIGURE 1

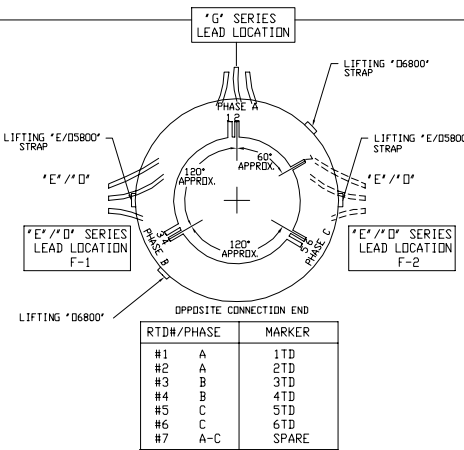


FIGURE 2

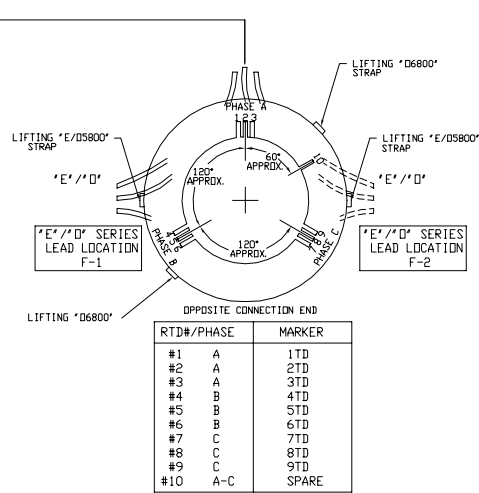


FIGURE 3

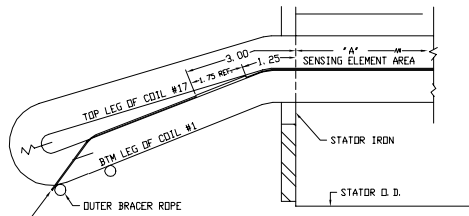


FIGURE 5

CORE LENGTH	"A"
12.0 OR LESS	7.00
12.0X CORE <40.0	12.00
CORE > 40.0	15.75

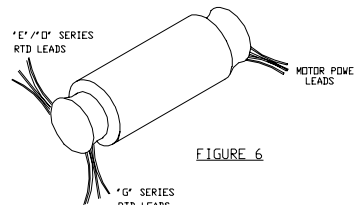


FIGURE 6

NAME	SYM. OR ITEM	SIZE OR CASTING NO.	4824-	(LB.)

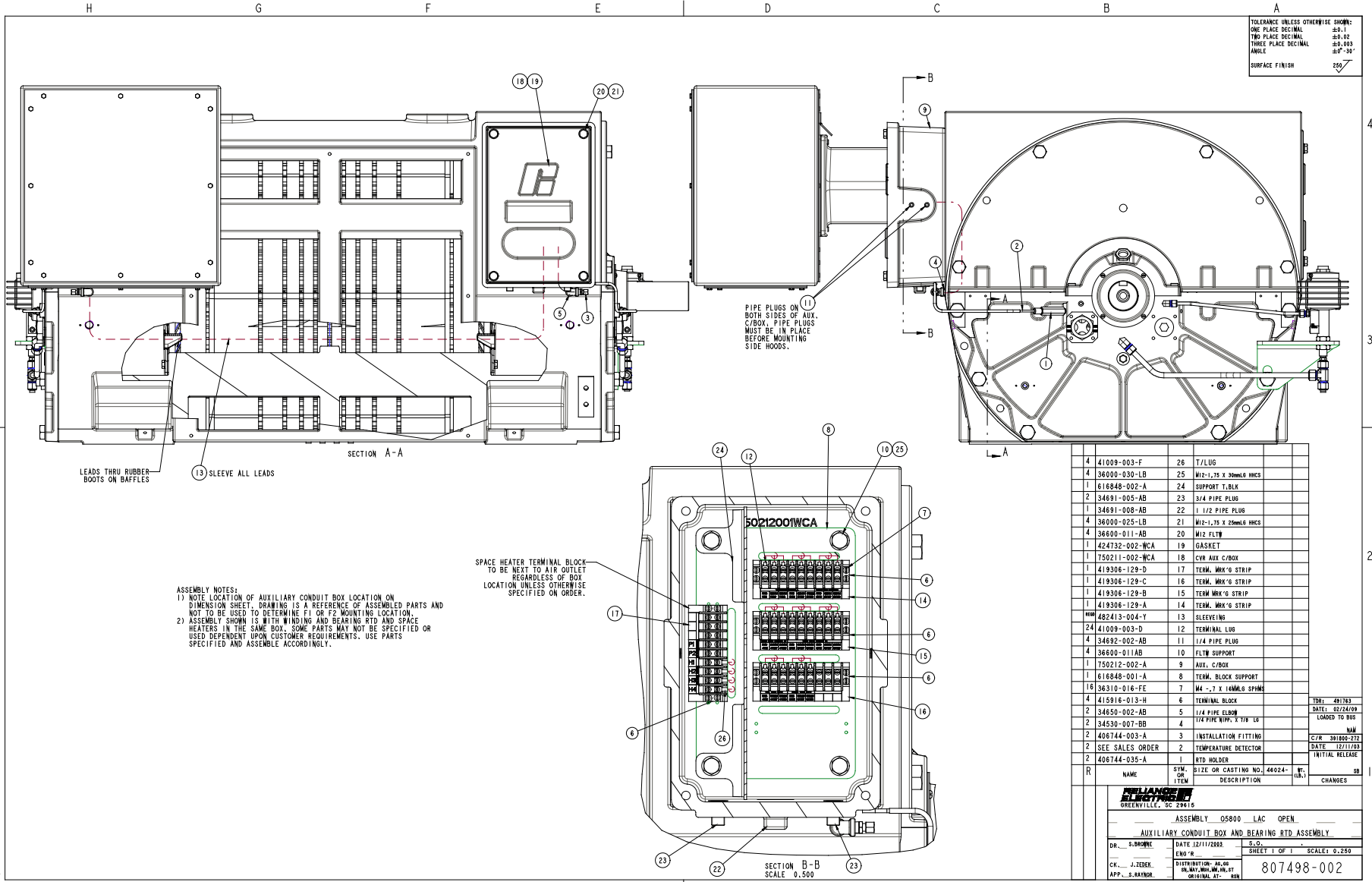
704077-146

704077-146

REV. DESC: ADD. LIFTING STRAPS FOR AN O6800	VERSION: 01	TDR: 00000841253
REV. LTR: A	REVISED: 01:55:00 02/25/2014	BY: RSNBCR
FILE: \RSN\00003\659		
MTL: -		

**BALDOR**

ASSY ALL LAC ALL WINDING RTD INSTALL 1 2 3/PHASE TEFLON SH 1 of 1



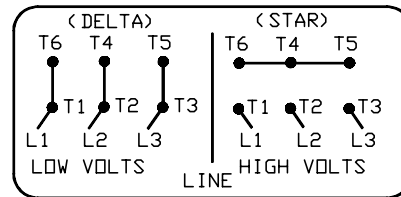
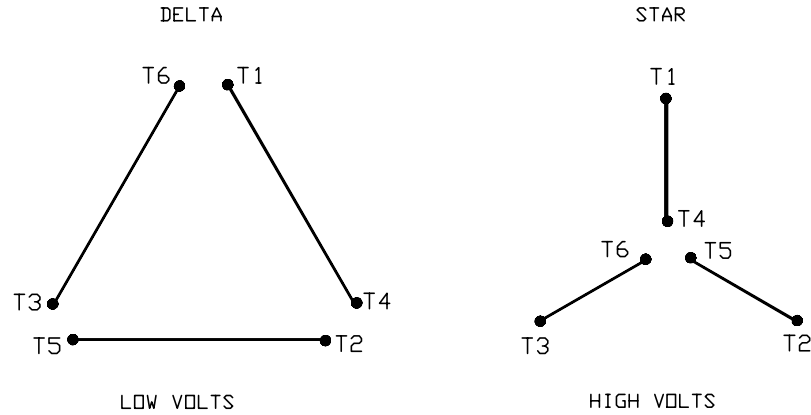
4	41009-003-F	26	T/LUG		
4	36000-030-LB	25	M12-1.75 X 30mML HMS		
1	616848-002-A	24	SUPPORT T.BLK		
1	34691-005-AB	23	3/4 PIPE PLUG		
1	34691-008-AB	22	1/2 PIPE PLUG		
4	36000-025-LB	21	M12-1.75 X 20mML HMS		
4	36600-011-AB	20	M12 FLTW		
1	424732-002-WCA	19	GASKET		
1	750211-002-WCA	18	CVR AUX C/BOX		
1	419306-129-D	17	TERM. MK'G STRIP		
1	419306-129-C	16	TERM. MK'G STRIP		
1	419306-129-B	15	TERM. MK'G STRIP		
1	419306-129-A	14	TERM. MK'G STRIP		
1	482413-004-T	13	SLEEVEING		
24	41009-003-D	12	TERMINAL LUG		
4	34692-002-AB	11	1/4 PIPE PLUG		
4	36600-011AB	10	FLTW SUPPORT		
1	750212-002-A	9	AUX. C/BOX		
1	616848-001-A	8	TERM. BLOCK SUPPORT		
16	36310-016-FE	7	MA - 7 X 14MM G SPHME		
4	415916-013-H	6	TERMINAL BLOCK		
2	34650-002-AB	5	1/4 PIPE ELBOW		
2	34530-007-BB	4	1/4 PIPE WTR. X 1/8" LB		
2	406744-003-A	3	INSTALLATION FITTING		
2	SEE SALES ORDER	2	TEMPERATURE DETECTOR		
2	406744-035-A	1	RTD HOLDER		

R	NAME	STM. OR ITEM	SIZE OR CASTING NO.	46624-1	WT. (LB)	CHANGES
	<b>RELIANCE ELECTRIC</b> GREENVILLE, SC 29616					
	ASSEMBLY 05800 LAC OPEN					
	AUXILIARY CONDUIT BOX AND BEARING RTD ASSEMBLY					
DR. S. BROOME	DATE 12/11/2008	S.O.				
ENG'R	SHEET 1 OF 1		SCALE 0.250			
CK. J. ZIEGLER	DISTRIBUTION NO. 08	DR. W. W. HALL, JR. AT	807498-002			
APP. S. RAYMOND	OR ORIGINAL AT - 65N					



416820-004

A-C MOTOR  
 CONNECTION DIAGRAM  
 STANDARD 6 LEAD (DELTA/STAR CONNECTED)  
 DUAL VOLTAGE (LOW VOLTS/HIGH VOLTS)



(N. P. 1767-CC)

416820-004

REV. DESC: FONT CHANGE FOR PDF SEARCHABLE		
REV. LTR: C	VERSION: 03	TDR: 000001009406
FILE: \RSN\00017\950	REVISED: 10:55:03 12/21/2016	BY: MGHMTT
MTL: -	Ⓢ □	

**BALDOR**

A-C MOTOR CONNECTION DIAGRAM  
 SH 1 of 1