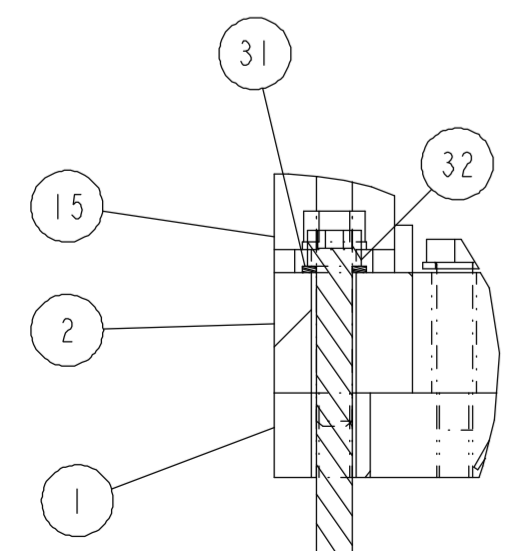
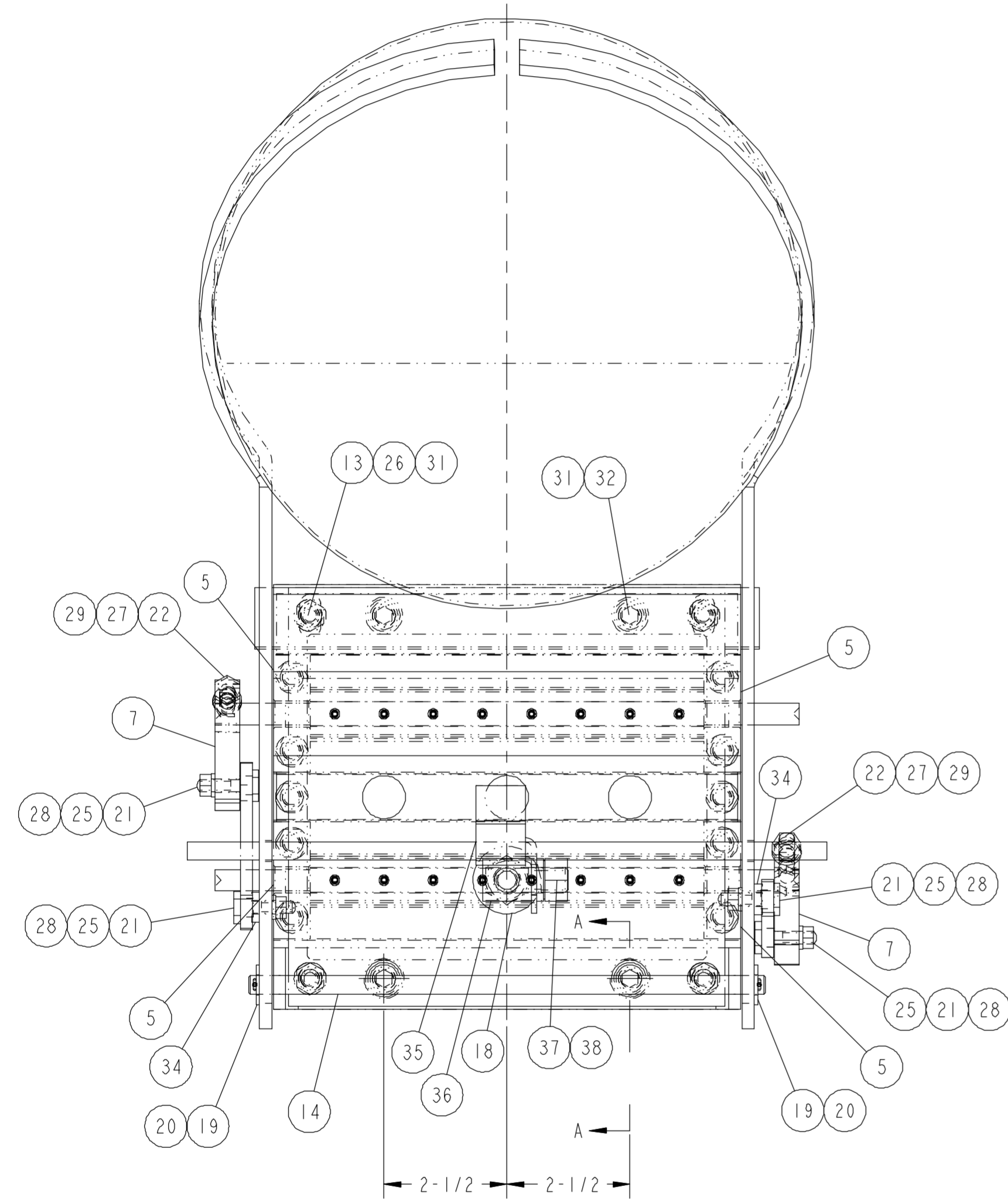
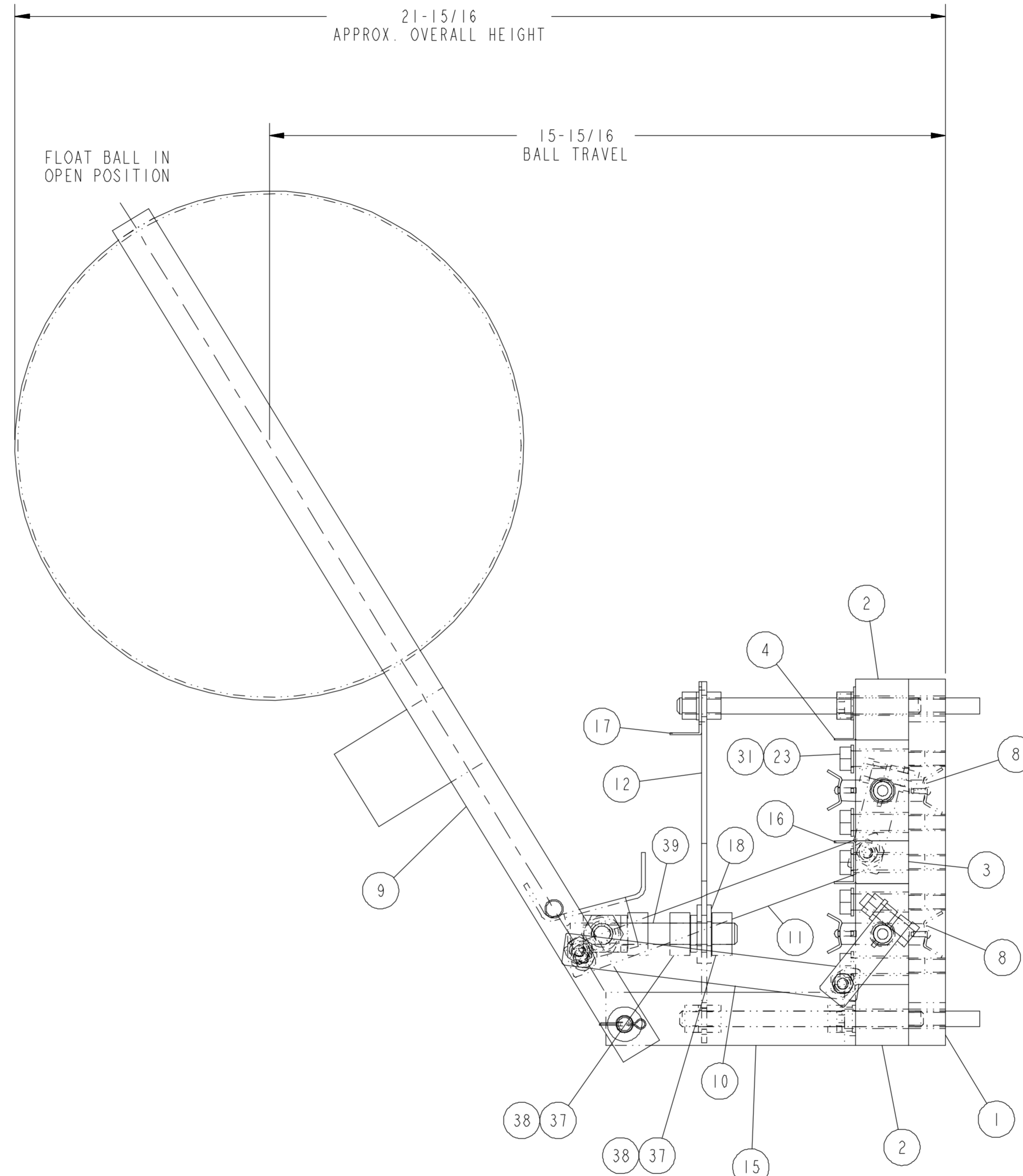


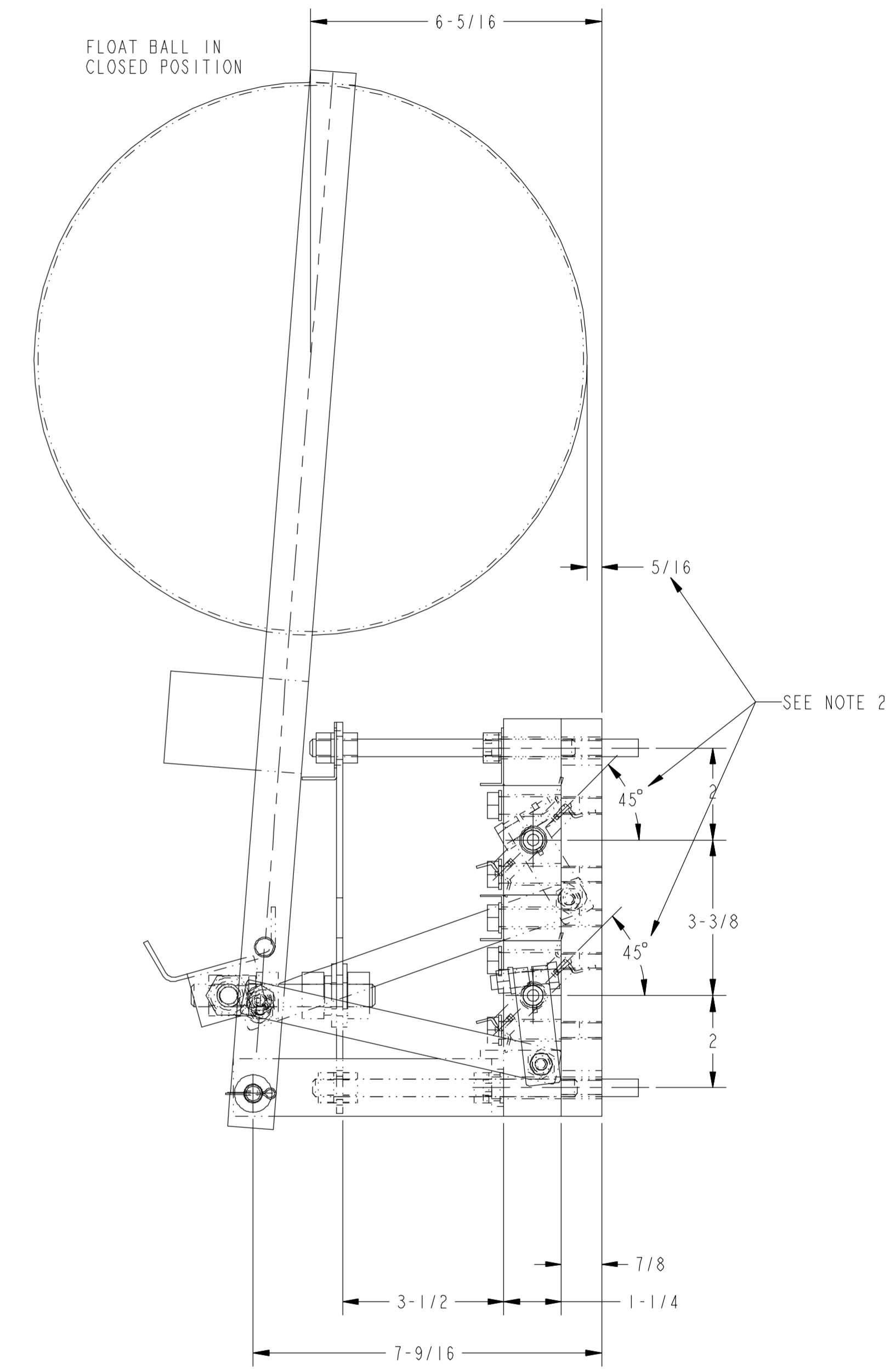
- NOTE:
1. ADJUST CLEARANCE BETWEEN VANE AND BEARING FROM .004 TO .008.
 2. FLOAT BALL TO BE LOCATED AT 5/16 DIM. WHEN ϕ OF VALVE IS IN CLOSED POSITION AT 45° AS SHOWN.
 3. AFTER ASSEMBLY, CHECK FOR FREE MOVEMENT THROUGH OUT FULL TRAVEL. BINDING OF PARTS IS NOT PERMISSIBLE.
 4. ADJUST ORIFICE PLATES TO A LINE TO LINE CONTACT WITH VANES WHEN FLOAT BALL IS IN CLOSED POSITION.



SECTION A-A



VANES OPEN



VANES CLOSED

REV.	DATE	EC. NO.	DR.	CHK.	ENG.
C	27-MAR-2006	CS06-0105	MJV	MJV	
ITEM 21 P/N WAS 067-26131-000.					

REV. NO.	DATE	BY	CHKD.	ENG.

ALL PROPRIETARY RIGHTS IN THE SUBJECT MATTER HEREOF ARE RESERVED AND NO PERMISSION IS GRANTED TO REPRODUCE THIS PRINT IN WHOLE OR IN ANY PART, OR DISCLOSE ANY OF THE INFORMATION UPON IT TO OTHERS WITHOUT WRITTEN RELEASE BY YORK INTERNATIONAL CORPORATION

		YORK INTERNATIONAL CORPORATION YORK, PA 17405	
THIRD ANGLE DO NOT SCALE TOLERANCES PER ENG. STD. M-282	VALVE, FLOAT 2-1/2 x 8 DBL.	MATERIAL ENG. STD.	PART NO.
DRAWN M.E. MUNDIS 29-JUL-1966 MODELER H.P. EISENSMITH 25-APR-2003 CHKD Xchkby Xchkdat ENG	CAGE NUMBER D 66935	DRAWING NUMBER 367-88212-000	REVISION C VERSTON 2+ RELEASED
SCALE: N.T.S.	WEIGHT: 65.4	ORIG. NO.: 367-72059-000	SHEET 2 OF 2