

BILL OF MATERIAL
FOR
367-88212-000

ITEM	PART NUMBER	QTY	DESCRIPTION
1	067-91541-000	1	PLATE, VALVE MOUNTING, 2-1/2 X 8 DOUBLE TYPE
2	067-91538-000	2	PLATE, ORIFICE
3	067-91535-000	1	PLATE, ORIFICE, CENTER
4	067-91536-000	1	ANGLE, DEFLECTOR, LIQUID
5	367-57377-000	4	BEARING, VALVE, 2-1/2 X 4-1/2 SINGLE TYPE AND
7	067-34579-000	2	ARM, VALVE, 1-1/2 X 3 LG.
8	367-91539-000	2	VANE, VALVE, 2-1/2 X 8 DBL. TYPE
9	367-91540-000	1	ARM, FLOAT BALL, 2-1/2 X 8 DBL. TYPE
10	067-91720-000	1	ARM, LINK, 2-1/2 X 8 DOUBLE
11	067-91542-000	1	LINK, ARM, 2-1/2 X 8 DOUBLE
12	067-91537-000	1	BAFFLE, LIQ. W/ADJUSTER MTG.
13	067-40787-000	4	STUD, CONTINUOUS, THREAD 3/8-16UNC-2A X 5-3/4 LG.
14	067-91532-000	1	SHAFT, ARM, FLOAT
15	367-91682-000	1	BRACKET, FLOAT ARM, 2-1/2 X 8 DBL. TYPE
16	067-91533-000	1	CHANNEL, DEFLECTOR, LIQUID
17	067-91534-000	1	ANGLE, STOP, FLOAT ARM
18	021-01278-000	2	WASHER, PLAIN, 1/2
19	021-01274-000	2	WASHER, PLAIN, 3/8
20	021-01078-000	2	PIN, COTTER, 1/16 X 3/4 LG.
21	077-16226-000	4	SCREW, SHOULDER, 1/4-20 UNC-3 X 1-1/4 LG.
22	021-08325-000	2	SCREW, CAP HEX HD., 5/16-18UNC X 1-1/4 LG.
23	021-08339-000	10	SCREW, CAP HEX HD., 3/8-16UNC X 1-3/4 LG.
25	021-00450-000	4	NUT, HEX, 1/4-20UNC-2B
26	021-00466-000	12	NUT, HEX, 3/8-16UNC-2B
27	021-00461-000	2	NUT, HEX, 5/16-18UNC-2B
28	021-05289-000	4	WASHER, LOCK HELICAL SPRING, 1/4 HEAVY
29	021-05290-000	2	WASHER, LOCK HELICAL SPRING, 5/16 HEAVY
31	021-05247-000	22	WASHER, LOCK HELICAL SPRING, 3/8 LIGHT
32	021-07996-000	4	SCREW HEX SOC HD, 3/8-16UNC X 3
34	066-12088-000	2	WASHER, PLAIN, 5/8 OD X 9/32 ID X 5/32 THK.
35	067-67865-000	1	STOP, FLOAT BALL, FOR 2-1/2" X 4-1/2"
36	067-67866-000	1	ADJUSTER, FLOAT BALL, STOP FOR 2-1/2" X 4-1/2"
37	021-00482-000	4	NUT HEX HVY, 1/2-13UNC
38	021-05293-000	3	WASHER, LOCK HELICAL SPRING, 1/2 HEAVY
39	021-12642-000	1	STUD, CONTS. THD. 1/2-13 UNC-2A X 4 LG.

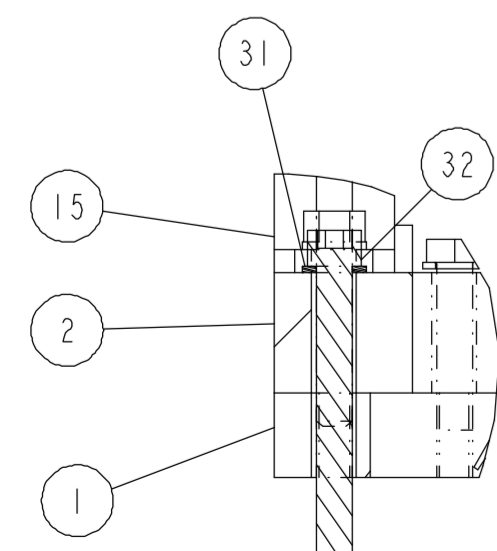
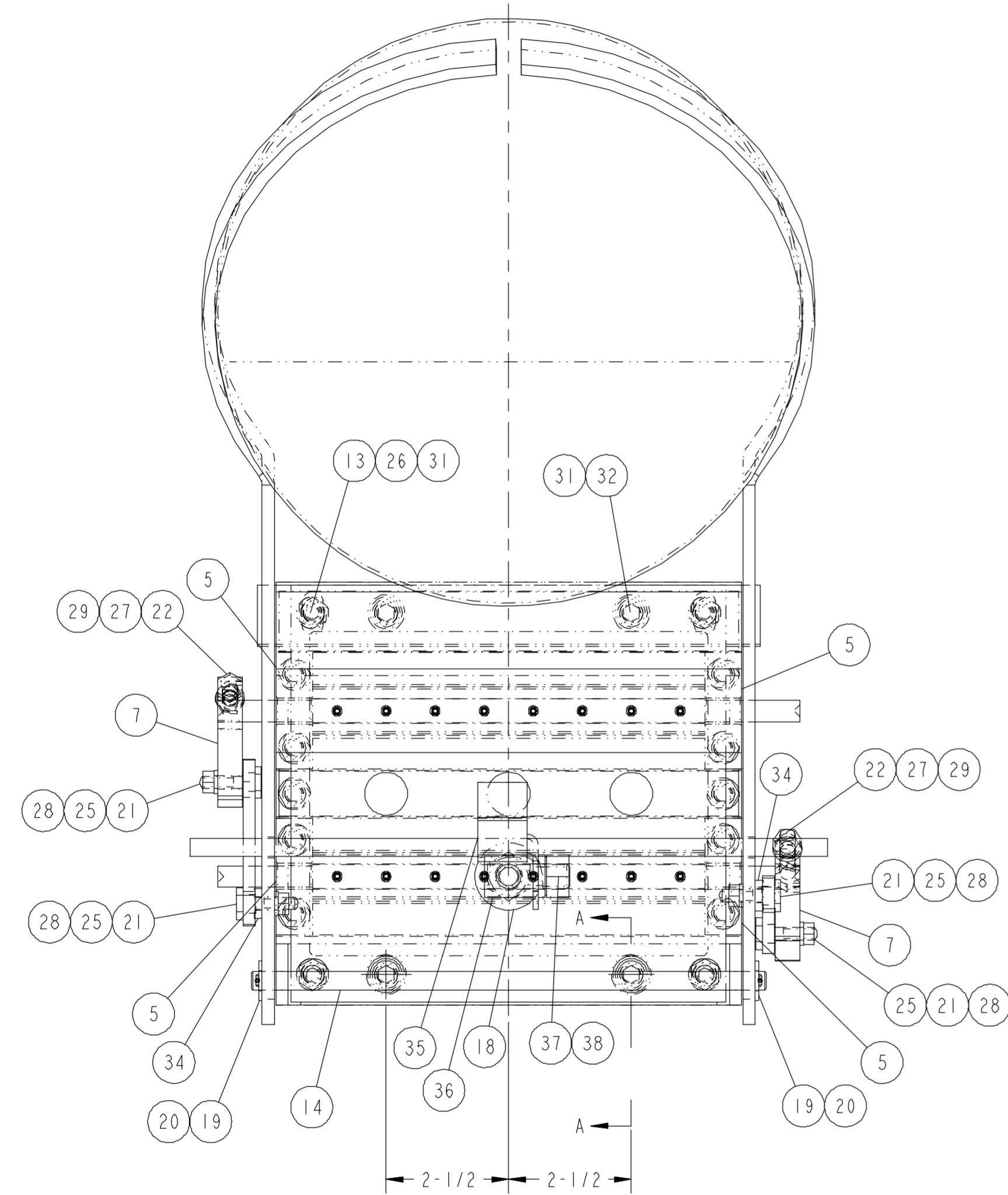
REV.	DATE	EC. NO.	DR.	CHK.	ENG.
C	27-MAR-2006	CS06-0105	MJV	MJV	
ITEM 21 P/N WAS 067-26131-000.					

CONTINUED

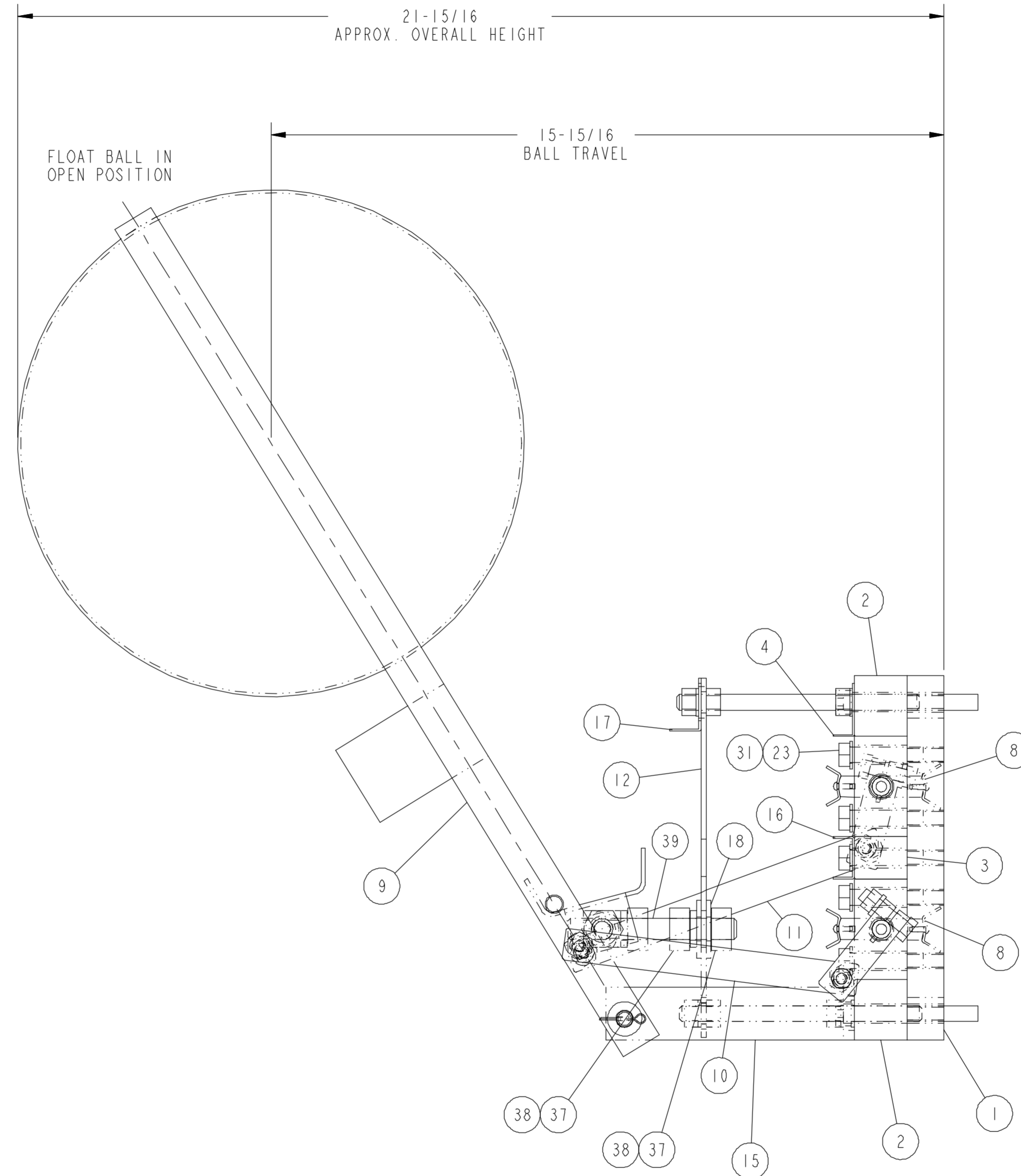
ALL PROPRIETARY RIGHTS IN THE SUBJECT MATTER HEREOF ARE RESERVED AND NO PERMISSION IS GRANTED TO REPRODUCE THIS PRINT IN WHOLE OR IN ANY PART, OR DISCLOSE ANY OF THE INFORMATION UPON IT TO OTHERS WITHOUT WRITTEN RELEASE BY YORK INTERNATIONAL CORPORATION

		YORK INTERNATIONAL CORPORATION YORK, PA 17405	
THIRD ANGLE DIMENSIONS ARE IN INCHES DO NOT SCALE TOLERANCES PER ENG. STD. M-282	VALVE, FLOAT 2-1/2 X 8 DBL.	MATERIAL ENG. STD. PART NO.	
DRAWN M.E. MUNDIS 29-JUL-1986 MODELER H.P. EISENSMITH 25-APR-2003 CHKD Xchkby Xchkdat ENG	CAGE NUMBER 66935	DRAWING NUMBER 367-88212-000	REVISION C 2+ RELEASED
SCALE: N.T.S.	WEIGHT: 65.4	ORIG. NO.: 367-72059-000	SHEET 1 OF 2

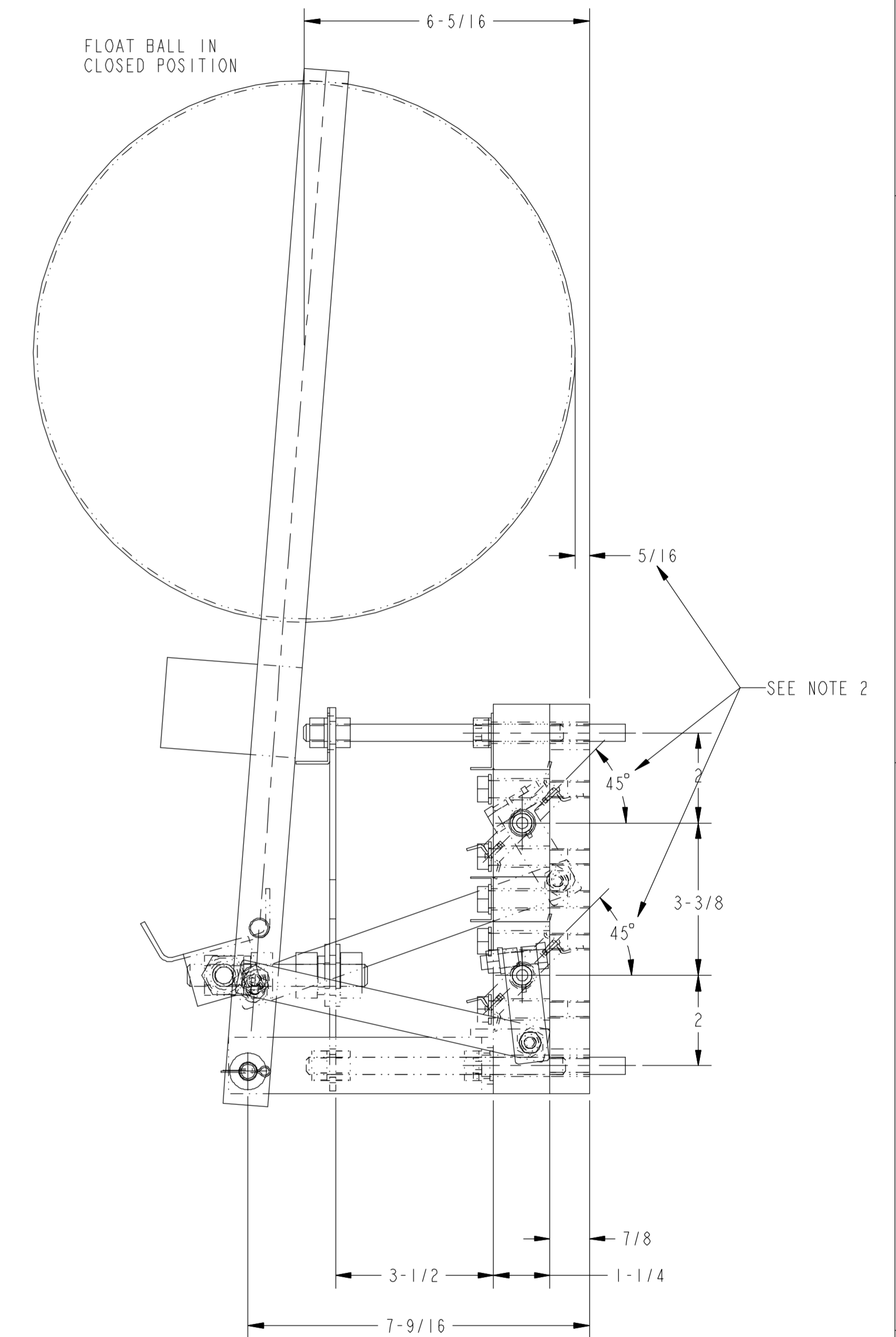
- NOTE:
1. ADJUST CLEARANCE BETWEEN VANE AND BEARING FROM .004 TO .008.
 2. FLOAT BALL TO BE LOCATED AT 5/16 DIM. WHEN ϕ OF VALVE IS IN CLOSED POSITION AT 45° AS SHOWN.
 3. AFTER ASSEMBLY, CHECK FOR FREE MOVEMENT THROUGH OUT FULL TRAVEL. BINDING OF PARTS IS NOT PERMISSIBLE.
 4. ADJUST ORIFICE PLATES TO A LINE TO LINE CONTACT WITH VANES WHEN FLOAT BALL IS IN CLOSED POSITION.



SECTION A-A



VANES OPEN



VANES CLOSED

REV.	DATE	EC. NO.	DR.	CHK.	ENG.
C	27-MAR-2006	CS06-0105	MJV	MJV	
ITEM 21 P/N WAS 067-26131-000.					
CONTINUED					

ALL PROPRIETARY RIGHTS IN THE SUBJECT MATTER HEREOF ARE RESERVED AND NO PERMISSION IS GRANTED TO REPRODUCE THIS PRINT IN WHOLE OR IN ANY PART, OR DISCLOSE ANY OF THE INFORMATION UPON IT TO OTHERS WITHOUT WRITTEN RELEASE BY YORK INTERNATIONAL CORPORATION

		YORK INTERNATIONAL CORPORATION YORK, PA 17405	
THIRD ANGLE DO NOT SCALE TOLERANCES PER ENG. STD. M-282	VALVE, FLOAT 2-1/2 x 8 DBL.	MATERIAL ENG. STD.	PART NO.
DRAWN M.E. MUNDIS 29-JUL-1986 MODELER H.P. EISENSMITH 25-APR-2003 CHKD Xchkby Xchkdat ENG	CAGE NUMBER 66935	DRAWING NUMBER 367-88212-000	REVISION C VERSTON 2+ RELEASED
SCALE: N.T.S.	WEIGHT: 65.4	ORIG. NO.: 367-72059-000	SHEET 2 OF 2