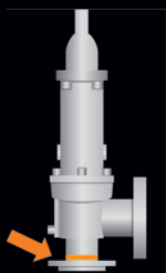
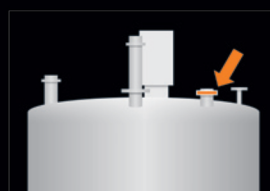


oseco

pressure
intelligence



**Safety Relief
Valve Isolation**



Reactors



Coking Drums



Bioreactors



Process Vessels

O s e c o • D i s c S e l e c t i o n • G u i d e

FEATURED

PRO+KRGL



Oseco's PRO+KRGL is a reverse buckling rupture disc designed and manufactured for high cycling performance and demanding applications. The PRO+KRGL can help maximize your system performance with a 95% operating ratio and delivers a best in class Flow Resistance Factor (FRF) or K_R , in gas and liquid. Excellent for isolating safety relief valves

OPERATING RATIO

95%

SIZE

1 - 10"

BURST PRESSURE (psig)

3 - 1000

NON-FRAGMENTING

Yes

FLOW DIRECTION



SERVICE

LGV

VACUUM SUPPORT REQUIRED

No

HOLDER

PRDI



FEATURED

FAS



This problem-solving disc will withstand full vacuum and will operate up to 90% of the stamped burst pressure. The FAS is excellent for relief valve isolation. The FAS is a failsafe rupture disc that offers the lowest K_R in the industry.

90%

1 - 24"

30 - 5000

Yes



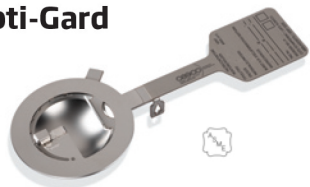
LGV

No

FRDI



Opti-Gard



Peripherally scored on the vent side for accurate burst control, Opti-Gard is an advanced rupture disc. With a 95% operating to burst-pressure ratio and a performance tolerance of 3 percent, Opti-Gard provides a single disc solution across a wide range of sizes and burst pressures. With architecturally engineered burst pressures, Opti-Gard offers the highest performance characteristics for liquid, gas, or vapor applications. Compatible with the Flo-Tel+ integral sensor.

95%

1 - 24"

5 - 1015

Yes



LGV

No

Opti



(F)CO



The (F)CO is designed to rupture at low pressures and consists of a slotted top section and a Fluoropolymer or metal seal. Available with optional vacuum support.

80%

11/16 - 42"

3 - 1000

Yes

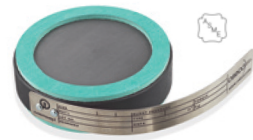


LGV

Yes

FRDI

GTM



The GraphiTech GTM rupture disc is manufactured from resin-impregnated graphite for use in highly corrosive processes. Other GraphiTech discs include the GTMV for use in applications that require vacuum support and the GTI for applications requiring a high temperature.

90%

1 - 24"

1 - 400

No



LGV

Yes

N/A

PLR



The PLR is a precision low-pressure rupture disc manufactured for high performance and demanding applications. It offers extremely low burst pressures in an all metal design. The armored construction of the PLR protects the disc from damage that can affect the performance of other low-pressure rupture discs.

90%

1 - 12"

2 - 165

Yes



LGV

No

PRDI

PCR



The Oseco PCR is a cross-scored, reverse-buckling rupture disc. Reversal occurs when the disc reaches the rated pressure and it opens along the score lines. Since there are no knife blades, the flow is unrestricted. The PCR is excellent for relief valve isolation (gas/vapor service) and excels in extreme cycling or high vacuum/back pressure applications.

90%

1 - 12"

35 - 1250

Yes



GV

No

PRDI

MV-RD



Oseco's MV-RD is the best in class, high performance, domed explosion vent for high cycling applications such as dust collectors, bag houses, and bulk storage units that experience vacuum pressures up to 12 psig or 24.4 inHg. The MV-RD's high cycling characteristics reduce maintenance and increase the vents life cycle. The MV-RD meets the requirements of NFPA 68.

80%

12x12 - 36x44"

1 - 14

Yes

No

N/A

Standard materials for rupture discs are 316 Stainless Steel, Nickel 200/201, Inconel 600, Monel 400, Hastelloy C-276. Standard material for holders is 316 Stainless Steel. Consult factory for other options.

Contact our customer service team for assistance at **800-395-3475** or visit us at **www.oseco.com**.

Oseco offers a complete line of innovative and dynamic solutions for the chemical processing industry.

Inventory Management Program

Oseco currently offers an Inventory Management Program to help meet our customer's differing needs. Our Inventory Management Program allows Oseco to manage our customer's inventory appropriately in order to eliminate inefficiencies associated with plant downtime and expensive expediting fees.

Plant Reviews

Oseco offers specialized plant reviews to identify outdated technologies and cost inefficiencies. We then provide a formal cost benefit proposal with a transition plan to help bring rupture disc technology into the modern age.

Maintenance and Engineering Seminars

Oseco's engineering team offers continuing education seminars to give engineers and plant maintenance workers in the chemical processing industry ongoing support, as well as a better understanding of pressure relief technology.

SureShip

Available 24/7/365. Oseco offers emergency service options from same day to five day delivery to satisfy your plant emergency needs.

Have an emergency? The unexpected just happened? It's late Friday night and you still need to keep production going? Call Oseco, we will expedite. Oseco will design, build and ship your product at a moment's notice.

Oseco Difference

Delivering exceptional life-safety & equipment protection solutions for our customers is underpinned by our best-quality standards. Striving to deliver a safe operational environment for your business, empowering our employees, a commitment to continuous improvement and operational excellence, gives Oseco the platform to deliver:

Performance

- Best Application Solution
- Best Product Performance

Custom Solutions

- Customized products to meet your exact needs and optimize your systems.
- Global sales and engineering team to meet your needs

Reliability

- Dependable Delivery
- Emergency Response Team
- Available 24/7
- Industry Certified
- Best Warranty



Contact Info

Let us help you with all your pressure relief questions.
Contact Oseco at **800-395-3475** or email us at **info@oseco.com**.

Oseco

1701 W. Tacoma, Broken Arrow, OK 74012, U.S.A.

Hastelloy is a registered trademark of Haynes International, Inc. Inconel and Monel are registered trademarks of Inco, Ltd., and the Inco family of companies. Oseco, FAS, FLCOS and PRO are registered trademarks, and CO, FLCO, FRDI, OTU, PRDI, PRO-S and RDI are trademarks of Oklahoma Safety Equipment Co., Inc.

Click
www.oseco.com



Call Us!
800-395-3475



Scan
for more info

