

# Table of Contents

Selecting a Pressure Gauge	2	<b>High Precision Gauges</b>		<b>MECHANICAL TEMPERATURE</b>	
Chemical Compatibility Table	3	312.20 6"	58	<b>Bimetal Thermometers</b>	
Advantages of Liquid-filled Gauges	4	332.30 6"	59	Operating Principle	126
WIKA Type Numbers	5	332.54 4"	60	General Specifications	127
Ordering Guidelines for Pressure Gauges	6	332.34 4½"	61	TI.1005	128
		332.34DD 4½"	62	TI.ST	128
		332.25 / 312.25 4½"	63	TI.20	129
		342.11 10"	64	TI.T20/TI.T17	130
				TI.30/TI.50	131
				TI.31/TI.51	132
				TI.32/TI.52	133
				TI.33/TI.34/TI.53/TI.54	134
				Ordering Bimetal Thermometers	135
				Bimetal Thermometer Options	137
				<b>Digital Thermometers</b>	
				TI.80/TI.82	138
				<b>Twin-Temp Thermometers</b>	
				TT.30/TT.32/TT.50/TT.52	139
				TT.80/TT.82	143
				<b>Gas Actuated Thermometers</b>	
				TI.R45/TI.R60	146
				TI.TSG60	148
				<b>Vapor Actuated Thermometers</b>	
				TI.V20/TI.V25/TI.V35/TI.V45	150
				<b>Industrial Glass Thermometers</b>	
				TI.61102/TI.61104	152
				TI.62102/TI.62104	152
				TI.DO1	153
				TI.701/TI.901	153
				<b>Thermowells</b>	
				TW.TH / TW15 (Threaded)	159
				TW.FL / TW10 (Flanged)	160
				TW.SW / TW20 (Socket/Weld)	160
				TW.SC / TW30 (Sanitary)	161
				Industrial Glass	162
				<b>ACCESSORIES</b>	
				910.10 Gauge Cocks	163
				910.11 Needle Valves	164
				910.11.100 Mini-Needle Valves	165
				910.11.200 Block & Bleed Valves	166
				910.11.300 Multi-Port Valves	167
				910.12.100/910.12.200/	
				910.12.300 Snubbers	168
				910.13 Overpressure Protectors	169
				910.14.100 Test Port Plug	170
				910.14.200 Adaptors	170
				910.14.300 Couplings	171
				910.24 Mini-Siphon	171
				910.15.100/910.15.200 Siphons	172
				CP3000/CP4000 Alarm Contacts	173
				Socket Restrictor	176
				Drag Pointer	176
				Alarm Contacts	176
				Pressure Gauge Accessories	177
				Standard Dial Layouts	182
				Conversion Chart	184
				Cross reference Chart	IBC
<b>MECHANICAL PRESSURE</b>		<b>Calibration Equipment</b>			
<b>Commercial Gauges</b>		CPH-6600	65		
111.10 1½", 2", 2½", 4"	7	CPG 1000	66		
111.10SP - Fire Sprinkler 4"	8	WICP-L100, WICP-M500, WICP-H10K	67		
111.11 1½", 2", 2½"	9				
111.12 1½", 2", 2½", 4"	10				
111.16PM 1½", 2"	12				
111.25CT 4½"	13				
113.13 1½", 2½"	14				
113.53 1½"	15				
<b>Industrial &amp; Process Gauges</b>		<b>DIAPHRAGM SEALS</b>			
131.11 1½", 2"	16	Diaphragm Seal Applications	69		
13X.53 4"	17	Operating Principle	70		
211.11 10"	18	Selection Guidelines	71		
212.20 6"	19	<b>Assembled Seals</b>			
213.40 2½", 4"	20	M93X.25	73		
21X.40PM 3½"	21	M93X.3A	74		
21X.53 2", 2½", 4"	22	M932.2C	76		
23X.53 2", 2½", 4"	26	M93X.D1	78		
21X.54 4"	28	<b>Threaded Seals</b>			
23X.54 2½", 4"	29	990.TA	80		
233.55 2½"	32	990.TB	81		
23X.30 2½", 4"	33	990.10	82		
23X.50 2½", 4", 4½", 6"	34	990.TC	84		
21X.34 4½"	35	990.40	86		
22X.34 4½"	36	990.34	88		
23X.34 4½", 6"	37	990.36	89		
26X.34 4½"	39	<b>Flanged Seals</b>			
232.34DD 4½"	40	990.12	90		
212.25 4½", 6"	41	990.FA	92		
232.25 4½", 6"	42	990.FC	94		
4XX.12 4", 6"	43	990.FD	96		
43X.50 4", 6"	44	990.FB	98		
		990.26	100		
		990.27	101		
		990.FR	103		
		990.28	105		
		990.41	106		
<b>Low Pressure Gauges</b>		<b>Sanitary Seals</b>			
A2G-10	45	990.22	108		
A2G-15	46	<b>Plastic Seals</b>			
611.10 2½"	47	990.31	109		
612.20 4"	48	<b>InLine Seals</b>			
6X2.34 4½"	49	981.10	110		
632.50 4"	50	981.27	112		
<b>Differential &amp; Duplex Gauges</b>		981.31	114		
700.04 2½", 4½"	51	981.22	115		
700.05 2½", 4½"	52	<b>Seal Accessories</b>			
712.15 6"	53	910.27	116		
712.25DP 4½", 6"	54	910.ZA	117		
712.25DX 4½", 6"	55	General Seal Information	119		
732.25 4½", 6"	56				
732.26 4½", 6"	57				

For complete detailed information, including electronic pressure, electronic temperature and ultra high purity products, please visit [www.wika.com](http://www.wika.com).

# Selecting a Pressure Gauge

When selecting a pressure gauge, it is important to consider the following factors to ensure safety and accuracy:

1. Pressure fluid composition
2. Pressure fluid temperature
3. Ambient conditions
4. Pressure range
5. Conditions affecting wear of the system
6. Method of mounting
7. Required accuracy

## 1. Pressure fluid composition

Since the sensing element of a pressure gauge may be exposed directly to the measured medium, consider the characteristics of this medium. It may be corrosive, it may solidify at various temperatures or it may contain solids that will leave deposits inside the sensing element. For pressure fluids that will not solidify under normal conditions or leave deposits, a Bourdon tube gauge is acceptable. Otherwise a Sealgauge or diaphragm seal should be used. A chemical compatibility chart follows this section to aid in the selection of the proper sensing element material.

## 2. Pressure fluid temperature

Steam and other hot media may raise the temperature of the gauge components above safe working limits of the sealed joints. In these cases it is recommended that a siphon, cooling tower or diaphragm seal be used in conjunction with the pressure gauge.

## 3. Ambient conditions

The normal ambient temperature range for WIKA pressure gauges is -40°F to +140°F (-40°C to +60°C) for dry or silicone-filled gauges and -4°F to +140°F (-20°C to +60°C) for glycerine-filled gauges. The error caused by temperature changes is +0.3% or -0.3% per 18°F rise or fall, respectively. The reference temperature is 70°F (20°C). The correction is for the temperature of the gauge, not the temperature of the measured medium.

Remote gauge mounting using a diaphragm seal and capillary line is one alternative for applications involving extreme ambient temperature.

Moisture and weather effects must also be considered. Liquid-filled gauges prevent condensation build up.

For outdoor use, stainless steel, brass or plastic cased gauges are recommended.

## 4. Pressure range

A gauge range of twice the working pressure is generally selected. The working pressure in all cases should be limited to 75% of the gauge range. Where alternating pressure and pulsation are encountered, working pressure should be limited to 2/3 of the gauge range.

## 5. Conditions affecting wear of the system

In applications involving severe pressure fluctuation or pulsation, the use of restrictors and/or snubbers is recommended. In addition, liquid-filled gauges increase the service life of gauges in these conditions. WIKA liquid-filled gauges are generally filled with glycerine. Silicone for larger temperature extremes and Halocarbon® for use with oxidizing agents such as chlorine, oxygen and hydrogen peroxide are also available.

## 6. Method of mounting

Radial (LM) and back (CBM or LBM) connections are available for most WIKA gauges. WIKA stocks gauges with standard NPT threaded connections. Other types such as metric threads, straight threads, hose barbs and special fittings are available as a special order.

Pressure gauges should be mounted in the upright position. For applications where the gauge is mounted side ways, horizontally or upside down, contact WIKA Customer Service for gauge type compatibility.

## 7. Required accuracy

WIKA stocks gauges with accuracies from  $\pm 3/2/3\%$  to  $\pm 0.1\%$  of span (ASME Grade B to Grade 4A).

To ensure safe and accurate gauge selection, you must take all of the above factors into consideration. When in doubt, please do not hesitate to contact your local stocking distributor or WIKA Customer Care for assistance!

# Chemical Compatibility Chart

Acetic Acid	B	Ethyl Acetate	A	Oxygen	A
Acetic Anhydride	D	Ethyl Cellulose	B	Paraffin	A
Acetone	B	Ethylene	A	Phosphoric Acid	B
Acetylene	B	Ethylene Dibromide	B	Photographic Solutions	B
Alcohol	A	Ethylene Dichloride	D	Pickling Solutions	B
Alums	B	Ethylene Glycol	A	Picric Acid	B
Aluminum Sulfate	B	Ferric Nitrate	B	Picric Acid (dry)	B
Ammonia	B	Ferric Sulfate	B	Potassium Chloride	D
Ammonium Carbonate	B	Formaldehyde	B	Potassium Cyanide	B
Ammonium Hydroxide	D	Freon	A	Potassium Permanganate	B
Ammonium Phosphate	D	Gallic Acid	B	Prestone	A
Beer	A	Gas (for lighting)	A	Salicylic Acid	A
Benzine	A	Gasoline	A	Sea Water	C
Benzol	A	Gasoline (refined)	B	Silver Nitrate	B
Benzyl Alcohol	B	Glucose	C	Sodium Carbonate	D
Bleach Liquors	B	Glycerine	A	Sodium Cyanide	D
Bordeaux Mixture	A	Hydrocyanic Acid	B	Sodium Hydroxide	D
Butane	B	Hydrogen	B	Sodium Nitrate	B
Butanol	A	Hydrogen Peroxide	B	Sodium Peroxide	B
Butyric Acid	B	Kerosene	A	Sodium Phosphate	B
Calcium Bisulfite	B	Lacquers	A	Sodium Sulfate	B
Calcium Chloride	C	Lactic Acid	B	Sodium Sulfide	D
Calcium Hydroxide	B	Lysol	B	Sodium Sulfite	B
Carbon Dioxide(dry)	B	Magnesium Hydroxide	C	Sulfur Dioxide	D
Carbon Bisulfide	B	Magnesium Sulfate	B	Sulfur Dioxide (dry)	B
Casein	B	Mercury	B	Sulfuric (75%)	B
Chloroform	B	Methyl Chloride	D	Sulfurous Acid	B
Chromic Acid	B	Methyl Salicylate	D	Tanning Liquors	D
Citric Acid	B	Naphtha	A	Toluene	A
Coal Gas	A	Nickel Acetate	B	Vegetable Oils	B
Copper Sulfate	B	Nitric Acid (pure)	B	Vinegar	B
Cottonseed Oil	B	Nitrous Acid	D	Water	A
Creosote (crude)	B	Nitrous Oxide	D	Whiskey	B
Dextrine	A	Oil (lubricating)	A	Wines	B
Ethers	D	Oil (refined)	A	Zinc Sulfate	B

**NOTE: For steam service, a siphon is required.**

Find the process fluid in the table above and match the letter code (A,B,C, or D) with the wetted part material listed below:

**A = Brass (Copper Alloy)    B = 316 SS    C = Monel®    D = Consult Factory**

This table is provided as a reference only and is accurate to the best of WIKA's knowledge. WIKA assumes no responsibility for, or obligation from, the information here.

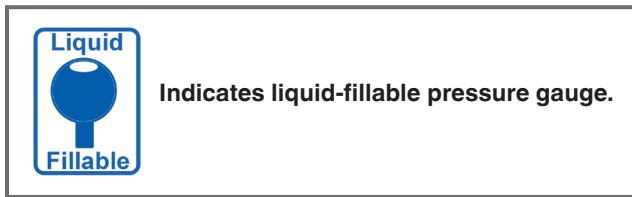
# Advantages of Liquid-filled Gauges

## Liquid-filled gauges

Liquid-filled pressure gauges provide a number of advantages:

- the liquid absorbs vibration and pressure spikes
- the dampening action of the liquid enables the operator to take readings during conditions of rapid dynamic loading and vibration
- the liquid lubricates all moving elements, dramatically reducing wear in the movement
- because most liquid-filled gauges are filled with non-aqueous liquid and hermetically sealed, they perform in corrosive environments and are immune to moisture penetration and icing, and shock effects are lessened

Liquid-filled gauges enhance the reliability and integrity of the measuring system for long periods under extreme operating conditions.



## Liquid Fill Fluid

Ambient Temperature Ratings (Table A)

**Allowable Operating Range** - Temperature range in which the operation of the gauge is not adversely affected by the filling liquid. At temperatures above the maximum rating, the fluid may break down. At temperatures below the minimum rating, the fluid may solidify (freeze).

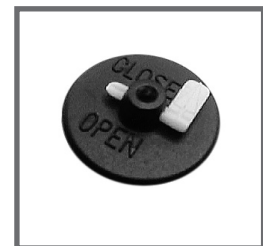


**NOTE:** Some parts of the pressure gauge may not be able to withstand temperatures above 140°F. Consult with the factory for technical assistance for these applications.

## Liquid-filled Gauge Case Venting

For pressure gauges with full scale ranges of 300 psi and below (including vacuum and compound ranges of 30" Hg-0-200 psi and below), case venting (after the gauge is installed) is necessary to preserve the accuracy. Temperature fluctuations during shipment and in the process application cause the liquid filling to expand and contract which in turn increases or decreases case pressure. As a result, accuracy can be decreased and the pointer may not return to zero properly until the gauge is vented to the atmosphere.

To vent a WIKA gauge, move the valve to the open position which will release any pressure or vacuum built up in the case. If the gauge is installed in an upright position, the lever can be left in the open position. The lever allows the use of a gauge in a non-upright orientation.



Vent Plug

## Choose the Right Liquid

The type of liquid used to fill the gauge varies with the application. Although pure glycerine provides the best performance in most applications, each has its own requirements. Guidelines to help ensure that a fluid is properly matched to an application are:

- if icing is a problem, use gauges filled with silicone oil or other comparable liquids. They have low viscosities even at -60°C
- if the system has electric accessories, such as contacts, use insulating oils, and
- if extreme temperature fluctuations are expected, use silicone oils

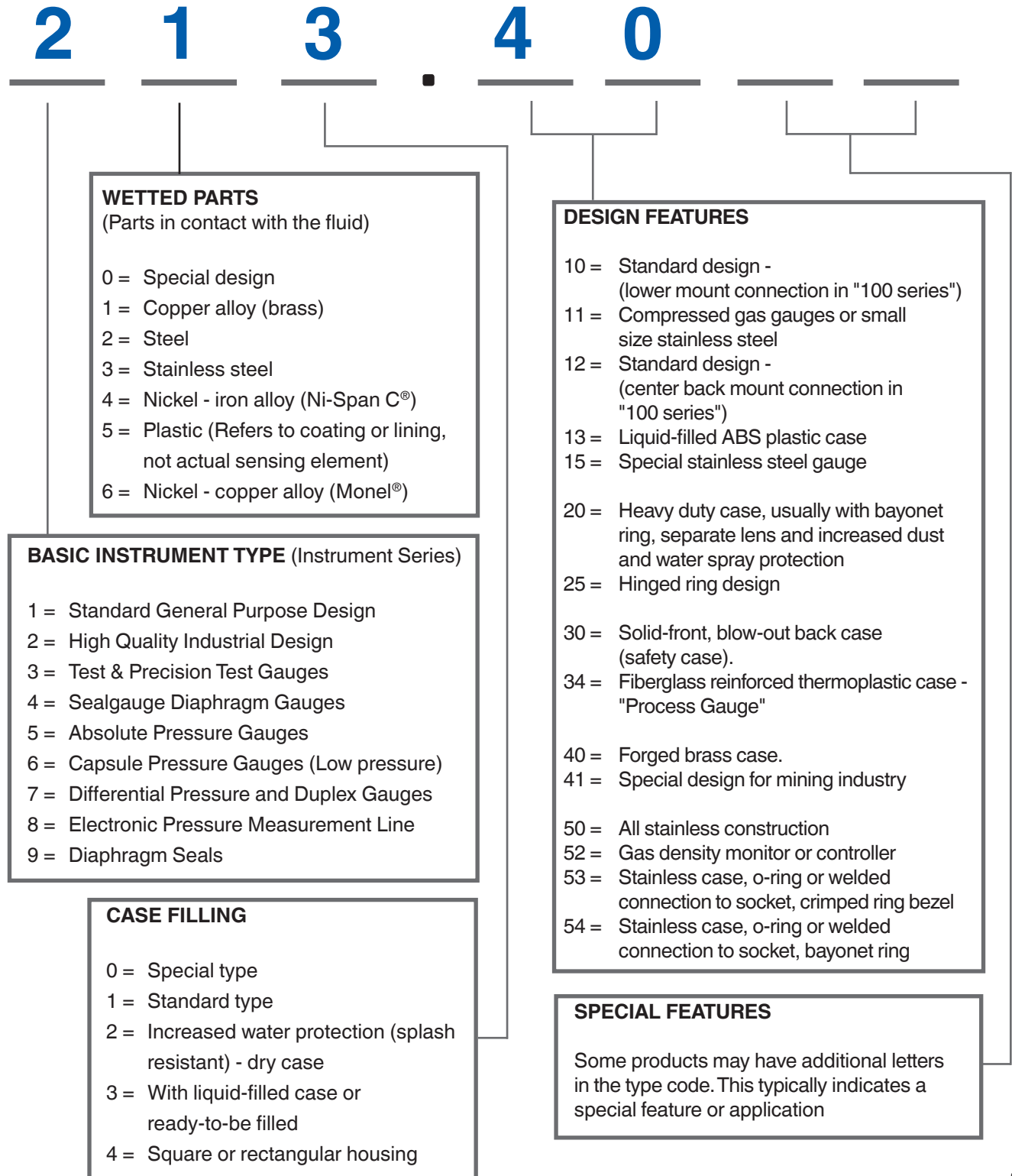
The higher the liquid viscosity, the greater its dampening capacity. The reason for this is that dampening changes in proportion to the temperature-dependent viscosity of the filling liquid. The suitable degree of dampening depends on the operating requirements the gauge must meet, such as pointer response time, pressure extremes, vibration and changes in pressure. WIKA can recommend specific liquids to suit problem applications.

Fill Fluid	Allowable Operating Range
<b>Glycerine</b> Dow 99.7% USP, Synthetic 1118 Centistokes at 68°F	-4°F to 140°F -20°C to 60°C
<b>Silicone</b> Dow Corning 200 Fluid 1000 Centistokes at 77°F	-40°F to 140°F -40°C to 60°C
<b>Halocarbon®</b> Halocarbon® Products 6.3 Centistokes at 100°F	-40°F to 140°F -40°C to 60°C

Table A - Allowable Ambient Temperature Ratings

# WIKA Type Numbers

The following is a guide to the WIKA model numbering system.



# Ordering Guidelines for Pressure Gauges

## 1) Quick Order 7- or 8-Digit Part Numbers:

**Example: 9834850**

Use the part number for the instrument you wish to order.

If you need additional options, or don't see a part number referenced for the exact product you need, you may use Descriptive Text as indicated below (see #2). **A 7-or 8-digit part number will be provided with your order confirmation.** The part number provided may then be used for re-ordering purposes.

## 2) Descriptive Text Part Number System:

**Example:**

Standard Product Description Section				Additional Options & Accessories	
<b>232.34</b>	<b>4.5</b>	<b>100 psi</b>	<b>1/2"</b>	<b>LM</b>	<b>SG, PM</b>
(Type #)	(Dial Size)	(Pressure Range)	(Process Conn. & Location)		(Additional Options / Accessories)

**The above example would indicate a 4 1/2" process gauge, dry, 100 psi dial scale, 1/2" NPT connection, lower mount connection with the following selected options: safety glass (SG) and panel mount (PM), as indicated.**

- Descriptive text can be used anytime you do not find an exact item with a listed part number. You may add as many codes at the end of the descriptive text as is required to configure the product.
- Codes and installed prices are found on a selection chart for each product type. Additional options may be located on the Accessory pages section in the back of the Catalog 900.
- Please reference the WIKA Type Number (pg. 5) for additional product type information. WIKA product types may already determine many configurations for wetted parts and case fill.
- Options and accessories should always appear at the end of the descriptive text, separated by commas. If you are not sure what to use for abbreviated code, then simply spell it out.

**NOTE: If you provide a part number and descriptive text, we will use the part number only.**

If you are unclear, do not see the option(s) needed, or require ordering assistance, please contact a WIKA Customer Care or Technical Quote Team representative.

# Type 111.10

WIKA type 111.10 standard pressure gauges are designed for long and reliable service under rugged conditions. Some typical applications are for pumps, hydraulic and pneumatic systems, compressors, as a contractor's gauge and for many other applications where the measured media does not corrode brass.



MECHANICAL PRESSURE

## Standard Features

<b>Size:</b>	1½", 2", 2½" & 4"	<b>Accuracy:</b>	± 3/2/3% of span
<b>Case:</b>	Black ABS		ASME B40.100 Grade B
<b>Wetted Parts:</b>	Copper alloy	<b>Connection:</b>	Lower mount
<b>Window:</b>	Clear plastic		
<b>Dial:</b>	White ABS; (4") aluminum		
<b>Pointer:</b>	Black ABS; (4") aluminum		

Type	111.10							
Size	1½"		2"		2½"		4"	
Connection	LM		LM		LM		LM	
Conn. Size	1/8" NPT	1/8" NPT	1/4" NPT		1/4" NPT		1/4" NPT	
Press. Scale	PSI	PSI	PSI	PSI/KPA	PSI	PSI/KPA	PSI	PSI/KPA
30" Hg	<a href="#">9747214</a>	<a href="#">8990039</a>	<a href="#">4252901</a>	<a href="#">8990250</a>	<a href="#">4253027</a>	<a href="#">8990471</a>	<a href="#">4255900</a>	<a href="#">9767991</a>
30"-0-15 psi					<a href="#">4253035</a>	<a href="#">8990489</a>	<a href="#">4255918</a>	9768009
30"-0-30 psi					<a href="#">4253043</a>	<a href="#">8990497</a>	<a href="#">4255926</a>	9768017
30"-0-60 psi					<a href="#">4253051</a>	8990501	<a href="#">4255934</a>	9768025
30"-0-100 psi					<a href="#">4253060</a>	8990519	4255942	9768033
30"-0-160 psi					4253078	8990527	<a href="#">4255951</a>	9768041
30"-0-200 psi					4253086	8990535	4255969	9768050
15 psi	<a href="#">9747222</a>	8990102	<a href="#">4252919</a>	<a href="#">8990323</a>	<a href="#">4253108</a>	<a href="#">8990552</a>	4255977	9768068
30 psi	<a href="#">9747230</a>	<a href="#">8990110</a>	<a href="#">4252927</a>	<a href="#">8990331</a>	<a href="#">4253116</a>	<a href="#">8990560</a>	<a href="#">4255985</a>	9768076
60 psi	<a href="#">9747249</a>	8990128	<a href="#">4252935</a>	<a href="#">8990349</a>	<a href="#">4253124</a>	<a href="#">8990578</a>	<a href="#">4255993</a>	<a href="#">9768084</a>
100 psi	<a href="#">9747257</a>	8990136	<a href="#">4252943</a>	<a href="#">8990357</a>	<a href="#">4253132</a>	<a href="#">8990586</a>	<a href="#">4256000</a>	<a href="#">9768092</a>
160 psi	<a href="#">9747265</a>	<a href="#">8990145</a>	<a href="#">4252951</a>	<a href="#">8990365</a>	<a href="#">4253141</a>	<a href="#">8990595</a>	<a href="#">4256018</a>	<a href="#">9768106</a>
200 psi	<a href="#">9747273</a>	8990153	<a href="#">4252960</a>	<a href="#">8990374</a>	<a href="#">4253159</a>	<a href="#">8990608</a>	<a href="#">4256026</a>	<a href="#">9768114</a>
300 psi		8990161	4252978	<a href="#">8990382</a>	<a href="#">4253167</a>	<a href="#">8990616</a>	<a href="#">4256034</a>	<a href="#">9768122</a>
400 psi			4252986		<a href="#">4253175</a>	<a href="#">8990625</a>	4256042	9768130
600 psi			4252994		<a href="#">4253183</a>	<a href="#">8990633</a>	<a href="#">4256051</a>	9768149
800 psi					4253191	8990641	4256060	
1,000 psi			4253001		<a href="#">4253205</a>	<a href="#">8990659</a>	4256078	<a href="#">9768416</a>
1,500 psi					4253213	<a href="#">8990667</a>	4256086	
2,000 psi					4253221	<a href="#">8990675</a>	4256094	
3,000 psi			<a href="#">4253019</a>		4253230	<a href="#">8990684</a>	4256107	
5,000 psi					4253248	<a href="#">8990692</a>	4256115	
Accessory order codes (installed at factory)								
Restrictor	+ R							

Stock items shown in blue print.

## Available Options

- Glass window
- Drag pointer
- Cleaned for oxygen service
- Black steel case and ring
- Stainless steel case and ring
- Special connections

## Applications

- Fire sprinkler systems
- Suitable for all media that will not obstruct the pressure system or attack copper alloy parts

## Abbreviations

LM - Lower mount

## Type 111.10SP

WIKA type 111.10SP 4" gauges are specifically designed for fire sprinkler service. This gauge features a black polycarbonate case, polycarbonate window and brass wetted parts. They are UL and FM approved for fire sprinkler service and have a standard accuracy of  $\pm 3/2/3\%$  of span.



### Standard Features

<b>Size:</b>	4"	<b>Accuracy:</b>	$\pm 3/2/3\%$ of span
<b>Case:</b>	Black polycarbonate		ASME B40.100 Grade B
<b>Wetted Parts:</b>	Copper alloy	<b>Connection:</b>	Lower mount
<b>Window:</b>	Snap-in polycarbonate		
<b>Dial:</b>	White aluminum		
<b>Pointer:</b>	Black aluminum		

Type	111.10SP
<b>Size</b>	<b>4"</b>
<b>Connection</b>	<b>LM</b>
<b>Conn. Size</b>	1/4" NPT
<b>Press. Scale</b>	PSI
300 psi "WATER"	<b>4233761</b>
80 psi rated to 250 psi "AIR"	<b>4233779</b>
Accessory order codes (installed at factory)	
Restrictor	+ R

Stock items shown in blue print.

### Available Options

- Black steel case

UL-393 Listed



Factory Mutual Approved



### Abbreviations

LM - Lower mount

# Type 111.11

WIKA type 111.11 gauges are designed for use with compressed gases, such as those used in the welding industry. The low copper content of the Bourdon tube for pressure ranges 800 psi and below makes it safe for use with acetylene. All type 111.11 gauges are cleaned to ASME B40.100 Level IV. "USE NO OIL" is printed in red on the face of each dial, making them safe for use with oxygen.



MECHANICAL PRESSURE

## Standard Features

<b>Size:</b>	1½", 2" & 2½"	<b>Pointer:</b>	Black aluminum
<b>Case:</b>	Polished brass or gold-painted steel	<b>Accuracy:</b>	± 3/2/3% of span ASME B40.100 Grade B
<b>Wetted Parts:</b>	Copper alloy	<b>Connection:</b>	Lower mount
<b>Window:</b>	Twist-lock polycarbonate		
<b>Dial:</b>	White aluminum	<b>Ranges 100 psi and up supplied with restrictor</b>	

Type	111.11				
Size	1½"	2"	2½"	2"	2½"
Case	Gold-painted steel			Polished brass	
Conn. Size	1/8" NPT	1/4" NPT		1/4" NPT	
Press. Scale	PSI	PSI	PSI	PSI	PSI
15 psi					
30 psi				8611009	8610851
30 psi Red Band	8079633	8985025	8985030	8611017	8610860
60 psi				8611025	8610878
100 psi	8079650	8985026	8985031	8611033	8610886
200 psi		8985027	8985032	8611041	8610894
400 psi	9735232	8985028	8985033	8611050	8610908
600 psi				8611076	8610924
1,000 psi				8611084	8610932
1,500 psi					
2,000 psi				8611106	8610959
3,000 psi				8611122	8610967
4,000 psi	8079617	8985029	8985034	8611114	8610975
6,000 psi	N/A				
Accessory order codes (installed at factory)					
Restrictor			+ R		

Stock items shown in blue print.

## Available Options

- Restrictor
- Cleaned for oxygen service with bag and cap
- CBM connection (1½" and 2" only)
- Black steel case
- Chrome plated steel case
- Black plastic case (1½" and 2" only)

## Applications

- Compressed gas regulators
- Beverage dispensing machines
- Suitable for all media that will not obstruct the pressure system or attack copper alloy parts

## Abbreviations

- LM - Lower mount
- CBM - Center back mount

## Type 111.12

WIKA type 111.12 gauges feature a black plastic case, snap-in plastic window and a center back mount (CBM) rear connection. With an industry recognized ASME 3/2/3% of span accuracy, WIKA type 111.12 gauges are the industry standard in the commercial gauge line. Available in a variety of sizes, mounting styles and optional configurations, type 111.12 gauges are suitable for many tough applications including regulators, medical, pneumatic controllers, compressors, valve positioners and pumps.



### Standard Features

<b>Size:</b>	1½", 2", 2½" & 4"	<b>Accuracy:</b>	± 3/2/3% of span
<b>Case:</b>	Black ABS		ASME B40.100 Grade B
<b>Wetted Parts:</b>	Copper alloy	<b>Connection:</b>	Center back mount
<b>Window:</b>	Clear plastic		
<b>Dial:</b>	White ABS; (4") aluminum		
<b>Pointer:</b>	Black ABS; (4") aluminum		

Type	111.12				
	1½"		2"		
Size			CBM		
Connection	1/8" NPT		1/8" NPT	1/4" NPT	
Conn. Size			PSI	PSI	PSI/KPA
Press. Scale <sup>1</sup>	PSI	PSI/KG/CM <sup>2</sup>	PSI	PSI	PSI/KPA
30" Hg	<b>9690128</b>	<b>9692635</b>	<b>9690357</b>	<b>4253256</b>	<b>9690586</b>
30"-0-15 psi					
30"-0-30 psi					
30"-0-60 psi					
30"-0-100 psi					
30"-0-160 psi					
30"-0-200 psi					
30"-0-300 psi					
30"-0-400 psi					
15 psi	<b>9690209</b>	9692644	<b>9690438</b>	<b>4253264</b>	<b>9690667</b>
30 psi	<b>9690217</b>	<b>9691923</b>	<b>9690446</b>	<b>4253272</b>	<b>9690675</b>
60 psi	<b>9690225</b>	<b>9692652</b>	<b>9690455</b>	<b>4253281</b>	<b>9690684</b>
100 psi	<b>9690234</b>	<b>9692660</b>	<b>9690463</b>	<b>4253290</b>	<b>9690692</b>
160 psi	<b>9690242</b>	<b>9692678</b>	<b>9690471</b>	<b>4253302</b>	<b>9690705</b>
200 psi	<b>9690250</b>	9692686	9690489	<b>4253311</b>	<b>9690714</b>
300 psi			9690497	4253329	<b>9690722</b>
400 psi				4253337	
600 psi				4253345	
800 psi					
1,000 psi				4253353	
1,500 psi					
2,000 psi					
3,000 psi				4253361	
5,000 psi					
Accessory order codes (installed at factory)					
Front flange, black steel	--			FF B	
Front flange, chr steel	--			FF C	
Restrictor, brass			R		

### Available Options

- Glass window
- Drag pointer
- Cleaned for oxygen service
- Black steel case and ring
- Stainless steel case and ring
- Special connections

### Applications

- Hydraulic and pneumatic systems
- Pumps, compressors, water systems, regulators
- Suitable for all media that will not obstruct the pressure system or attack copper alloy parts

### Abbreviations

CBM - Center back mount

Stock items shown in blue print.

# Type 111.12

Type	111.12		
Size	2½"		4"
Connection	CBM		CBM
Conn. Size	1/4" NPT		1/4" NPT
Press. Scale <sup>1</sup>	PSI	PSI/KPA	PSI/KG/CM <sup>2</sup>
30" Hg	4253371	9691035	
30"-0-15 psi	<b>4253389</b>	9691044	
30"-0-30 psi	<b>4253397</b>	9691052	
30"-0-60 psi	4253400	9691060	
30"-0-100 psi	4253418	9691078	
30"-0-160 psi	4253426	9691086	
30"-0-200 psi	4253434	9691095	
30"-0-300 psi			
30"-0-400 psi			
15 psi	4253451	<b>9691116</b>	9693577
30 psi	<b>4253460</b>	<b>9691125</b>	9693585
60 psi	<b>4253478</b>	<b>9691133</b>	9693594
100 psi	<b>4253486</b>	<b>9691141</b>	9693607
160 psi	<b>4253494</b>	<b>9691159</b>	9693615
200 psi	<b>4253507</b>	<b>9691167</b>	9693624
300 psi	<b>4253515</b>	<b>9691175</b>	9693632
400 psi	4253523	9691184	9693640
600 psi	4253531	9691192	9693658
800 psi	4253541	9691205	
1,000 psi	4253559	9691214	
1,500 psi	4253567	9691222	
2,000 psi	4253575	9691230	
3,000 psi	4253583	9691248	
5,000 psi	4253591	9691256	
Accessories (installed)			
Front flange, black steel		FF B	
Front flange, chrome steel		FF C	
Restrictor, brass		R	

<sup>1</sup> "PSI/KG/CM<sup>2</sup>" denotes dual scale; PSI outside in black, KG/CM<sup>2</sup> inside in red.  
 Vacuum scale: 30"Hg outside in black; 760 mm Hg inside in red.

**Abbreviations**  
 CBM - Center back mount

Stock items shown in **blue print**.

Mechanical Pressure > Commercial Pressure > 111.16PM

## Type 111.16PM

WIKA type 111.16PM gauges are designed for U-clamp panel mounting. They feature a black ABS case and low friction Swiss movement to insure a long, reliable service life. The 111.16PM design fits into U.S. size panel cut-outs.



### Standard Features

<b>Size:</b>	1½" & 2"	<b>Pointer:</b>	Black ABS
<b>Case:</b>	Black ABS	<b>Accuracy:</b>	± 3/2/3% of span ASME B40.100 Grade B
<b>Wetted Parts:</b>	Copper alloy	<b>Connection:</b>	Center back mount, with U-clamp
<b>Window:</b>	Clear plastic		
<b>Dial:</b>	White ABS		

Type	111.16PM		
Size	1½"	2"	
Connection	CBM/UC	CBM/UC	
Conn. Size	1/8" NPT	1/4" NPT	1/4" NPT
Press. Scale	PSI	PSI	PSI/KPA
30" Hg	<b>4231279</b>	<b>4231341</b>	<b>4231422</b>
30"-0-15 psi			
30"-0-30 psi			
30"-0-60 psi			
30"-0-100 psi			
30"-0-160 psi			
30"-0-200 psi			
15 psi	4231287	4231350	4231431
30 psi	<b>4231295</b>	4231368	4231449
60 psi	<b>4231309</b>	4231376	4231457
100 psi	<b>4231317</b>	4231384	<b>4231465</b>
160 psi	<b>4231325</b>	<b>4231392</b>	4231473
200 psi	<b>4231333</b>	4231406	4231481
300 psi		4231414	<b>4231490</b>
400 psi			
600 psi			
800 psi			
1,000 psi			
1,500 psi			
2,000 psi			
3,000 psi			
5,000 psi			
Accessory order codes (installed at factory)			
Restrictor		+ R	

### Available Options

- Restrictor
- Cleaned for oxygen service
- Special connections

### Applications

- Pneumatics
- HVAC
- Suitable for all media that will not obstruct the pressure system or attack copper alloy parts

### Abbreviations

CBM - Center back mount  
UC - U-clamp

Stock items shown in blue print.

# Type 111.25CT

WIKA type 111.25CT 4½” gauges are specifically designed for the HVAC market as a contractor’s gauge. This gauge features a stainless steel case, brass wetted parts, and an adjustable pointer. Contractor’s gauges are designed for static applications and may not be well-suited to high vibration and pulsation applications.



MECHANICAL PRESSURE

## Standard Features

- |                      |                               |                    |                            |
|----------------------|-------------------------------|--------------------|----------------------------|
| <b>Size:</b>         | 4½”                           | <b>Pointer:</b>    | Black aluminum, adjustable |
| <b>Case:</b>         | Stainless steel, matte-finish | <b>Accuracy:</b>   | ± 1% of span               |
| <b>Wetted Parts:</b> | Copper alloy                  |                    | ASME B40.100 Grade 1A      |
| <b>Window:</b>       | Snap-in polycarbonate         | <b>Connection:</b> | Lower mount                |
| <b>Dial:</b>         | White aluminum                |                    |                            |

Type	111.25CT	
<b>Size</b>	4½”	
<b>Connection</b>	LM	
<b>Conn. Size</b>	1/4” NPT	
<b>Press. Scale</b>	PSI	PSI/KPA
30” Hg		
30”-0-15 psi	4277687	4277849
30”-0-30 psi	4277695	4277857
30”-0-60 psi	4277709	4277865
30”-0-100 psi	4277717	4277873
30”-0-160 psi	4277725	4277881
30”-0-200 psi	4277733	4277890
30”-0-300 psi	4277741	4277903
30”-0-400 psi		
15 psi	4277750	4277911
30 psi	<b>4277768</b>	4277920
60 psi	<b>4277776</b>	4277938
100 psi	<b>4277784</b>	<b>4277946</b>
160 psi	<b>4277792</b>	4277954
200 psi	<b>4277806</b>	4277962
300 psi	<b>4277814</b>	4277971
400 psi	4277822	4277989
600 psi	4277831	4277997
Accessory order codes (installed at factory)		
Rear flange, SS	+ RF	
Restrictor	+ R	

## Available Options

- Cleaned for oxygen service
- Special connections
- Restrictor
- Stainless steel case with rear flange
- Black steel case

### Abbreviations

LM - Lower mount  
 SS - Stainless steel

Stock items shown in blue print.

## Type 113.13

The WIKA type 113.13 gauge is the ideal choice for OEM and general industrial applications requiring an economical, liquid-filled pressure gauge. The glycerine liquid fill dampens the Bourdon tube and reduces wear of the movement, extending gauge life. Typical applications of the type 113.13 include air compressors, hydraulic presses, pumps, marine engines, as well as other types of industrial hydraulic and pneumatic equipment.



### Standard Features

<b>Size:</b>	1½" & 2½"	<b>Accuracy:</b>	± 3/2/3% of span
<b>Case:</b>	Black ABS		ASME B40.100 Grade B
<b>Wetted Parts:</b>	Copper alloy	<b>Connection:</b>	Lower or center back mount (1½" CBM only)
<b>Window:</b>	Clear plastic	<b>Liquid Fill:</b>	Glycerine
<b>Dial:</b>	White ABS		
<b>Pointer:</b>	Black ABS		

Type	113.13		
Size	1½"	2½"	
Connection	CBM	LM	CBM
Conn. Size	1/8" NPT		
Press. Scale	PSI	PSI	PSI
30" Hg		9677909	9693289
30"-0-15 psi		9677925	
30"-0-30 psi		9677933	
30"-0-60 psi		9677941	
30"-0-100 psi		9677950	
30"-0-160 psi		9677968	
30"-0-200 psi		9677976	9693351
15 psi		9677984	9693360
30 psi	9738240	9677992	9693378
60 psi	9738258	9678000	9693386
100 psi	9738266	9678018	9693394
160 psi	9738274	9693726	9693408
200 psi		9693734	9693416
300 psi		9693742	9693424
400 psi		9693750	9693432
600 psi			
800 psi			
1,000 psi		9693777	9693459
1,500 psi		9693785	9693467
2,000 psi		9693793	9693475
3,000 psi		9693807	9693483
5,000 psi		9693815	9693491
Accessory order codes (installed at factory)			
Front flange, ABS	--	--	+ FF
UC, steel	--	--	+ UC
Restrictor		+ R	

### Available Options

- Restrictor
- Other connections
- 2" case size (LM & CBM)

### Abbreviations

LM - Lower mount  
 CBM - Center back mount  
 UC - U-clamp

Stock items shown in blue print.

# Type 113.53

WIKA type 113.53 features a 1½" size liquid-filled gauge with a stainless steel case. The glycerine case fill dampens and lubricates the gauge internals, extending the life of the gauge. The 113.53 gauge is ideal for applications with high dynamic pressure pulsations and vibrations.



MECHANICAL PRESSURE

## Standard Features

<b>Size:</b>	1½"	<b>Pointer:</b>	Black aluminum
<b>Case:</b>	Stainless steel, matte-finish	<b>Accuracy:</b>	± 3/2/3% of span
<b>Wetted Parts:</b>	Copper alloy		per ASME B40.100 Grade B
<b>Window:</b>	Clear plastic		
<b>Dial:</b>	White aluminum		

Type	113.53		
<b>Size</b>	1½"		
<b>Connection</b>	LM	CBM	CBM/UC
<b>Conn. Size</b>	1/8" NPT		
<b>Press. Scale<sup>1</sup></b>	PSI	PSI	PSI
30" Hg	50702424	50701525	50700821
30"-0-15 psi	50702432	50701533	50700847
30"-0-30 psi	50702441	50701541	50700855
30"-0-60 psi	50702459	50701550	50700863
30"-0-100 psi	50702467	50701568	50700871
30"-0-160 psi	50702475	50701576	50700880
30"-0-200 psi	50702483	50701584	50700898
30"-0-300 psi			
30"-0-400 psi			
15 psi	50702491	50701592	50700901
30 psi	50702505	50701606	50700910
60 psi	50702513	50701614	50700928
100 psi	50702521	50701622	50700936
160 psi	50702530	50701631	50700944
200 psi	50702548	50701649	50700952
300 psi	50702556	50701657	50700961
400 psi	50702564	50701665	50700979
600 psi	50702572	50701673	50700987
800 psi			
1,000 psi	50702581	50701681	50700995
1,500 psi	50702599	50701690	50701002
2,000 psi	50702602	50701703	50701011
3,000 psi	50702611	50701711	50701029
5,000 psi	50702629	50701720	50701061
Accessory order codes (installed at factory)			
Restrictor		R	
Silicone case fill		SIL	

## Available Options

- Other pressure connections
- U-clamp bracket for panel mounting (CBM only)
- Restrictor
- Alternate case fills

**Note:** For options not shown - consult your WIKA distributor or the factory.

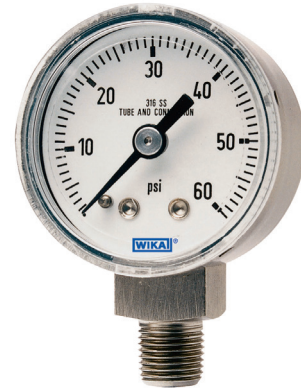
### Abbreviations

LM - Lower mount  
 CBM - Center back mount  
 SS - Stainless steel

Stock items shown in blue print.

## Type 131.11

Type 131.11 gauges feature 316 SS wetted parts, a 304 SS case, and a snap-in, acrylic window. When installation space is limited and stainless steel wetted parts are needed, WIKA type 131.11 is the best choice. The stainless steel construction also makes these gauges ideal for harsh environments.



### Standard Features

<b>Size:</b>	1½" & 2"	<b>Pointer:</b>	Black aluminum
<b>Case:</b>	304 SS, matte-finish	<b>Accuracy:</b>	± 2.5% of span
<b>Wetted Parts:</b>	316L SS	<b>Connection:</b>	Lower or center back mount
<b>Window:</b>	Snap-in polycarbonate		
<b>Dial:</b>	White aluminum		

Type	131.11					
Size	1½"		2"			
Connection	LM	CBM	LM	CBM	LM	CBM
Conn. Size	1/8" NPT		1/8" NPT		1/4" NPT	
Press. Scale <sup>1</sup>	PSI	PSI	PSI	PSI	PSI	PSI
30" Hg						
30"-0-15 psi					8993241	8993259
30"-0-30 psi						
30"-0-60 psi					8993267	8993275
30"-0-100 psi					8993284	8993292
30"-0-160 psi					8993305	8993314
30"-0-200 psi						
15 psi						
30 psi	9117946	<b>9118128</b>	9118063	<b>9117970</b>	9118039	9117903
60 psi	<b>9117938</b>	<b>9118101</b>	9118071	9117989	<b>9118020</b>	<b>9117890</b>
100 psi	9117920	<b>9118098</b>	<b>9118055</b>	9117962	<b>9118012</b>	9117881
160 psi	9117911	<b>9118080</b>	9118047	9117954	9117997	<b>9117865</b>
200 psi						
300 psi						
400 psi						
600 psi						
800 psi						8993330
1,000 psi						
1,500 psi						
2,000 psi						
3,000 psi					8993348	8993356
5,000 psi						
10,000 psi						
Accessory order codes (installed at factory)						
Restrictor						+ R

### Available Options

- Restrictor
- 2½" case size
- U-clamp bracket
- Front or rear flange
- Instrument glass window
- Cleaned for oxygen service
- Other connections

### Applications

- Suitable for corrosive environments and gaseous or liquid media that will not obstruct the pressure system
- Ideal when a smaller size instrument is needed
- CDA (Clean Dry Air) applications

### Abbreviations

LM - Lower mount  
 CBM - Center back mount  
 SS - Stainless steel

Stock items shown in blue print.

## Type 13X.53

Type 13X.53 stainless steel gauges provide resistance to corrosive media and environments. They feature 316 SS wetted parts, series 300 SS case and movement, and a welded case-to-socket connection. Type 132.53 gauges are field liquid fillable or available filled from the factory. This gauge is designed for static applications and may not be well-suited to high vibration and pulsation applications.



### Standard Features

<b>Size:</b>	4"	<b>Accuracy:</b>	± 3/2/3% of span
<b>Case:</b>	304 SS		ASME B40.100 Grade B
<b>Wetted Parts:</b>	316L SS	<b>Connection:</b>	Lower mount
<b>Window:</b>	Polycarbonate		
<b>Dial:</b>	White aluminum		
<b>Pointer:</b>	Black aluminum		

Type	132.53	
<b>Size</b>	<b>4"</b>	
<b>Connection</b>	LM	
<b>Conn. Size</b>	1/4" NPT	1/2" NPT
<b>Press. Scale</b>	PSI	PSI
30 psi	4285329	4285477
60 psi	4285337	4285485
100 psi	4285345	<b>4285493</b>
160 psi	4285353	4285507
200 psi	4285361	4285515
300 psi	4285370	4285523
400 psi	4285388	4285531
600 psi	4285396	<b>4285540</b>
800 psi		
1,000 psi	4285400	4285558
1,500 psi	4285418	<b>4285566</b>
2,000 psi	4285426	<b>4285574</b>
3,000 psi	4285434	4285582
5,000 psi	4285442	4285591
10,000 psi	4285451	4285604
15,000 psi	4285469	4285612
Accessory order codes (installed at factory)		
Rear flange, SS	+ RF	
Restrictor	+ R	
Glycerine fill	Type 133.53	

### Available Options

- Cleaned for oxygen service
- Other connections
- Restrictor
- Special connections
- Case fillings

### Applications

- With liquid-filled case for applications with high dynamic pressure pulsations or vibration
- Suitable for corrosive environments and gaseous or liquid media that will not obstruct the pressure system
- Process industry: chemical/petrochemical, power stations, mining, on and offshore, environmental technology, mechanical engineering and plant construction

### Abbreviations

LM - Lower mount  
SS - Stainless steel

Stock items shown in **blue print**.

## Type 211.11

Type 211.11 10" pressure gauge is ideal for boiler room service or other applications where its large dial size makes it easier to read from a distance. These gauges feature a black-painted steel case and a  $\pm 1.0\%$  accuracy.



### Standard Features

<b>Size:</b>	10"	<b>Pointer:</b>	Black aluminum, adjustable
<b>Case:</b>	Black-painted steel	<b>Accuracy:</b>	$\pm 1\%$ of span
<b>Ring:</b>	Back-painted steel		ASME B40.100 Grade 1A
<b>Wetted Parts:</b>	Copper alloy	<b>Connection:</b>	Lower mount
<b>Window:</b>	Flat instrument glass		
<b>Dial:</b>	White aluminum		

Type	211.11
<b>Size</b>	<b>10"</b>
<b>Connection</b>	LM
<b>Conn. Size</b>	1/2" NPT
<b>Press. Scale</b>	PSI/BAR
30" Hg	
30"-0-15 psi	
30"-0-30 psi	
30"-0-60 psi	
30"-0-100 psi	
30"-0-160 psi	
30"-0-200 psi	
15 psi	
30 psi	4273193
60 psi	
100 psi	4273214
160 psi	
200 psi	4273231
300 psi	4273240
400 psi	4273258
600 psi	4273266
800 psi	4273274
1,000 psi	4273282
1,500 psi	
2,000 psi	4273303
3,000 psi	50081799
5,000 psi	4273321
10,000 psi	
15,000 psi	
Accessory order codes	
Rear flange	+ RF
Restrictor	+ R

### Available Options

- Lower back mount connection
- 316 SS wetted parts (Type 231.11)
- Cleaned for oxygen service
- Special connections

### Applications

- For plants and equipment where measured values must be read from a distance
- Suitable for gaseous or liquid media that will not obstruct the pressure system

### Abbreviations

LM - Lower mount  
SS - Stainless steel

Stock items shown in blue print.

## Type 212.20

Designed for severe industrial service, WIKA type 212.20 gauges provide proven service life of an industrial gauge. The large dial size makes it ideal for applications requiring reading from a distance.



### Standard Features

<b>Size:</b>	6"	<b>Pointer:</b>	Black aluminum
<b>Case:</b>	304 SS	<b>Accuracy:</b>	± 1% of span
<b>Ring:</b>	304 SS, bayonet-type		ASME B40.100 Grade 1A
<b>Wetted Parts:</b>	Copper alloy	<b>Connection:</b>	Lower mount
<b>Window:</b>	Flat instrument glass		
<b>Dial:</b>	White aluminum		

Type	212.20
<b>Size</b>	<b>6"</b>
<b>Connection</b>	LM
<b>Conn. Size</b>	1/2" NPT
<b>Press. Scale</b>	PSI
30" Hg	4287836
30"-0-15 psi	
30"-0-30 psi	4287844
30"-0-60 psi	
30"-0-100 psi	
30"-0-160 psi	
30"-0-200 psi	
15 psi	4287852
30 psi	4287861
60 psi	4287879
100 psi	4287887
160 psi	4287895
200 psi	4287909
300 psi	4287917
400 psi	4287925
600 psi	4287933
800 psi	
1,000 psi	4287941
1,500 psi	4287950
2,000 psi	4287968
3,000 psi	4287976
5,000 psi	4287984
10,000 psi	4287992
15,000 psi	4288000
Accessory order codes (installed)	
Rear flange	+ RF
Restrictor	+ R

### Available Options

- Lower back mount connection
- Safety glass window
- Adjustable pointer
- Drag pointer (maximum reading indicator)
- Cleaned for oxygen service
- Magnetic or inductive contact switches
- Special connections

### Applications

- Sturdy industrial pressure gauges designed in compliance with operational safety requirements of EN 837-1 and ASME B40.100
- Reliable pressure gauge for machine and plant construction industry
- Suitable for gaseous or liquid media that will not obstruct the pressure system or corrode copper alloy wetted parts

**Abbreviations**  
 LM - Lower mount  
 SS - Stainless steel

Stock items shown in blue print.

Mechanical Pressure > Industrial Gauges > 213.40

## Type 213.40

This type 213.40 gauge features an integral Bourdon tube which is soldered or brazed directly into the one-piece case/socket.

### Applications

- Intended for adverse service conditions where pulsation or vibration exists
- Suitable for gaseous or liquid media that will not obstruct the pressure
- Hydraulics and compressors

### Standard Features

<b>Size:</b>	2½" & 4"	<b>Pointer:</b>	Black aluminum
<b>Case:</b>	Forged brass, gold-painted	<b>Accuracy:</b>	(2½") ± 2/12% of span
<b>Ring:</b>	(2½") Gold-plated ABS (4") Chrome-plated brass		ASME B40.100 Grade A (4) ± 1% of span
<b>Wetted Parts:</b>	Copper alloy		ASME B40.100 Grade 1A
<b>Window:</b>	Acrylic	<b>Connection:</b>	Lower or back mount
<b>Dial:</b>	White aluminum	<b>Liquid Fill:</b>	Glycerine

Type	213.40					
Size	2½"					
Connection	LM			CBM		
Conn. Size	1/4" NPT					
Press. Scale	PSI	PSI/KPA	PSI/BAR	PSI	PSI/KPA	PSI/BAR
30" Hg	9318003	9456198	9734109	9318070	9455930	9764312
30"-0-15 psi	9318011	9613862		9318089	9325662	
30"-0-30 psi	9318020	9456163		9318097	9325689	
30"-0-60 psi	9318038	9456201		9318100	9325816	
30"-0-100 psi	9318046	9679928		9318119	9149872	
30"-0-160 psi	9318054	9679936		9318127	9325972	
30"-0-200 psi	9318062	9442863		9318135	9326251	
15 psi	9310673	9456155	9734117	9318143	9455949	9734215
30 psi	9310681	9456171	9734125	9318151	9455957	9734223
60 psi	9310690	9456210	9734134	9318160	9455965	9734231
100 psi	9310703	9456228	9734142	9318178	9456120	9746072
160 psi	9310711	9456180	8986216	9318186	9455981	9734257
200 psi	9310720	9456236		9318194	9442979	
300 psi	9310738	9442871	9798870	9318208	9442987	9734265
400 psi	9310746	9611452		9318216	9455990	
600 psi	9310754	9456244	8985815	9318224	9456007	8985774
800 psi	9310762	9690115		9318232	9128832	
1,000 psi	9310770	9456252	9798404	9318240	9456015	9746048
1,500 psi	9310789	9456260	9734193	9318259	9207511	8985829
2,000 psi	9310797	9455906		9318267	9456023	
3,000 psi	9310800	9455914	8985566	9318275	9435220	8985831
5,000 psi	9310819	9456279		9318283	9442995	
7,500 psi	9325107	9455922		9318291	9128840	
10,000 psi	9790454					
15,000 psi						
Accessory order codes (installed at factory)						
FF, brass pol		+ FF P			+ FF P	
FF, chrome		+ FF C			+ FF C	
FF, SS		+ FF SS			+ FF SS	
UC, SS		- -			+ UC S	
RF, black-painted steel				+ RF		
Restrictor					+ R	



### Available Options

- Safety glass window
- Pressure compensating window
- Drag pointer (max. reading indicator)
- Special connections

Type	213.40		
Size	4"		
Connection	LM	LBM	
Conn. Size	1/4" NPT	1/2" NPT	1/4" NPT
Press. Scale	PSI	PSI	PSI
30" Hg	9314555		9314296
30"-0-15 psi	9314563		9314300
30"-0-30 psi	9314571		9314318
30"-0-60 psi	9314580		9314326
30"-0-100 psi	9314598		9314334
30"-0-160 psi	9314601		9314342
30"-0-200 psi	9314610		9314350
15 psi	9314644	9314121	9314385
30 psi	9314652	9314130	9314393
60 psi	9314660	9314148	9314407
100 psi	9314679	9314156	9314415
160 psi	9314687	9314164	9314423
200 psi	9314695	9314172	9314431
300 psi	9314709	9314180	9314440
400 psi	9314717	9314199	9314458
600 psi	9314725	9314202	9314466
800 psi	9314733	9314210	9314474
1,000 psi	9314741	9314229	9314482
1,500 psi	9314750	9314237	9314490
2,000 psi	9314768	9314245	9314504
3,000 psi	9314776	9314253	9314512
5,000 psi	9314784	9314261	9314520
7,500 psi			
10,000 psi	9314792	9314270	9314539
15,000 psi			
Accessory order codes (installed at factory)			
FF, chrome		+ FF C	+ FF C
UC, chrome		- -	+ UC C
RF, chrome		+ RF C	+ RF C
4½" panel kit		+ PM ADAPT	
Restrictor		+ R	

Stock items shown in blue print.

#### Abbreviations

CBM - Center back mount, FF - Front flange, LM - Lower mount, RF - Rear flange, UC - U-clamp, SS - Stainless steel

Mechanical Pressure > Industrial Gauges > 21X.40PM

## Type 21X.40PM

WIKA type 21X.40PM gauges are designed to fit existing paper machine panels. Each gauge is hermetically sealed to prevent moisture from entering during washdown. The hermetic seal makes this gauge liquid fillable for high vibration or pulsation applications. The generously oversized polished stainless steel front flange allows for easy retrofit installation.



Type 212.40PM - Dry case  
Type 213.40PM - Liquid filled case

MECHANICAL PRESSURE

### Standard Features

<b>Size:</b>	3½"	<b>Dial:</b>	White aluminum
<b>Case:</b>	Forged brass	<b>Pointer:</b>	Black aluminum
<b>Ring:</b>	Polished stainless steel front flange	<b>Accuracy:</b>	± 2/1/2% of span ASME B40.100 Grade A
<b>Wetted Parts:</b>	Copper alloy	<b>Connection:</b>	Back mount
<b>Window:</b>	Acrylic		

Type	212.40PM
<b>Size</b>	<b>3½"</b>
<b>Connection</b>	LBM
<b>Conn. Size</b>	1/4" NPT
<b>Press. Scale</b>	PSI
30" Hg	9838932
30"-0-15 psi	
30"-0-30 psi	
30"-0-60 psi	
30"-0-100 psi	
30"-0-160 psi	
30"-0-200 psi	
15 psi	
30 psi	8998804
60 psi	8998812
100 psi	8998820
160 psi	8998940
200 psi	8998838
300 psi	8998846
400 psi	8998855
600 psi	8998863
800 psi	
1,000 psi	8998871
1,500 psi	
2,000 psi	
3,000 psi	
5,000 psi	
Accessory order codes (installed at factory)	
Glycerine fill	Type 213.40PM
Restrictor	+ R

### Available Options

- Cleaned for oxygen service
- Special connections

### Applications

- With liquid-filled case for applications with high dynamic pressure pulsations or vibration
- Paper machines and hydraulic presses
- Suitable for gaseous or liquid media that will not obstruct the pressure system

### Abbreviations

LBM - Lower back mount  
SS - Stainless steel

Stock items shown in **blue print**.

## Type 21X.53

WIKA type 21X.53 gauges feature a stainless steel case for protection in harsh environments. The O-ring seal around the connection makes this gauge field liquid fillable. When filled, the 213.53 is excellent for high vibration and pulsation applications.



Type 212.53 - Dry  
Type 213.53 - Liquid filled

### Standard Features

<b>Size:</b>	2", 2½" & 4"	<b>Pointer:</b>	Black aluminum
<b>Case:</b>	304 SS	<b>Accuracy:</b>	(2" & 2½") ± 2/1/2% of span
<b>Wetted Parts:</b>	Copper alloy		ASME B40.100 Grade A
<b>Window:</b>	Polycarbonate		(4") ± 1.0% of span (4" size)
<b>Dial:</b>	White aluminum		ASME B40.100 Grade 1A
<b>Ring:</b>	Stainless steel polished	<b>Connection:</b>	Lower or back mount

Type	213.53 (Liquid-filled)					
Size	2½"					
Connection	LM			CBM		
Conn. Size	1/4" NPT			1/4" NPT		
Press. Scale	PSI	PSI/BAR	PSI/KG/CM <sup>2</sup>	PSI	PSI/BAR	PSI/KG/CM <sup>2</sup>
30" Hg	<b>9767002</b>	9691957	9693683	<b>9767185</b>	9692139	9693861
30"-0-15 psi						
30"-0-30 psi	<b>9767010</b>	9691965	9693691			
30"-0-60 psi	9767029	9691974	9693705			
30"-0-100 psi						
30"-0-160 psi						
30"-0-200 psi						
15 psi	<b>9767037</b>	9691982	9693713			9697220
30 psi	<b>9767045</b>	9691990	9693721	<b>9767193</b>	9692147	9693879
60 psi	<b>9767053</b>	9692007	9693739	<b>9767202</b>	9692155	9693887
100 psi	<b>9767061</b>	<b>9692015</b>	9693747	<b>9767215</b>	<b>9692164</b>	9693895
160 psi	<b>9767070</b>	<b>9692024</b>	9693755	<b>9767223</b>	9692172	9693909
200 psi	<b>9767088</b>	9692032	9693764	<b>9767231</b>	9692180	9693917
300 psi	<b>9767096</b>	<b>9692040</b>	9693772	<b>9767240</b>	9692198	9693925
400 psi	<b>9767100</b>	9692058	9693780			
600 psi	<b>9767118</b>	<b>9692066</b>	9693798	<b>9768947</b>	9692202	9693934
800 psi						
1,000 psi	<b>9767126</b>	<b>9692075</b>	9693802	<b>9767258</b>	9692210	9693942
1,500 psi	<b>9767134</b>	<b>9692083</b>	9693810	9768165	9692228	9693950
2,000 psi	<b>9767142</b>	<b>9692091</b>	9693828	9768939	9692236	9693968
3,000 psi	<b>9767150</b>	<b>9692105</b>	9693836	<b>9767266</b>	9692245	9693976
5,000 psi	<b>9767169</b>	<b>9692113</b>	9693845	<b>9767274</b>	9692253	9693985
6,000 psi		<b>9748207</b>		50992598		
10,000 psi	<b>9767177</b>	9692121	9693853	9767282	9692261	9693993
Accessory order codes (installed at factory)						
Front flange, SS		--			+ FF S	
Rear flange, SS		+ RF S			+ RF S	
U-clamp, steel		--			+ UC Z	
U-clamp, SS		--			+ UC S	
Restrictor				+ R		

Stock items shown in blue print.

### Available Options

- Drag pointer (max. reading indicator)
- Cleaned for oxygen service
- Special connection

### Applications

- Intended for adverse service conditions where pulsating or vibration exists (with liquid filling)
- Hydraulics and compressors
- Suitable for gaseous or liquid media that will not obstruct the pressure system

### Abbreviations

LM - Lower mount  
CBM - Center back mount  
SS - Stainless steel

## Type 21X.53

Type	213.53 (Liquid-filled)
<b>Size</b>	2½"
<b>Connection</b>	LM
<b>Conn. Size</b>	7/16"-20 SAE
<b>Press. Scale</b>	PSI/BAR
30" Hg	
30"-0-15 psi	
30"-0-30 psi	
30"-0-60 psi	
30"-0-100 psi	
30"-0-160 psi	
30"-0-200 psi	
15 psi	
30 psi	
60 psi	
100 psi	9795664
160 psi	9795672
200 psi	9795680
300 psi	
400 psi	
600 psi	
800 psi	
1,000 psi	
1,500 psi	
2,000 psi	9795698
3,000 psi	9795702
5,000 psi	9795710
6,000 psi	9795728
10,000 psi	
Accessory order codes (installed)	
Rear flange, SS	+ RF S
Restrictor	+ R

### Abbreviations

LM - Lower mount  
LBM - Lower back mount  
SS - Stainless steel

Type	213.53 (Liquid-filled)					
Size	4"					
Connection	LM		LM		LBM	
Conn. Size	1/4" NPT		1/2" NPT		1/4" NPT	1/2" NPT
Press. Scale	PSI	PSI/KG/CM <sup>2</sup>	PSI	PSI/BAR	PSI/KG/CM <sup>2</sup>	PSI/BAR
30" Hg	<b>9699028</b>	9694000		9734427	9694239	9734533
30"-0-15 psi	9699036	9694018				
30"-0-30 psi	<b>9699045</b>	9694026				
30"-0-60 psi	9699053	9694035				
30"-0-100 psi	9699061	9694043				
30"-0-160 psi	9699079	9694051				
30"-0-200 psi	9699087	9694069				
15 psi	<b>9699095</b>	9694077		9734320		9734435
30 psi	<b>9699109</b>	9694085		9734338	9694247	9734444
60 psi	<b>9699117</b>	9694094		9734346	9694255	9734452
100 psi	<b>9699125</b>	9694107		<b>9734355</b>	9694264	9734460
160 psi	<b>9699257</b>	9694115		<b>9734363</b>	9694272	9734478
200 psi	<b>9699134</b>	9694124			9694280	
300 psi	<b>9699142</b>	9694132		<b>9734371</b>	9694298	9734486
400 psi	9699150	9694140			9697743	
600 psi	<b>9699168</b>	9694158		<b>9734389</b>	9694302	9734495
800 psi	9699176					
1,000 psi	<b>9699185</b>	9694166	<b>4228732</b>	<b>9734397</b>	9694310	9734508
1,500 psi	9699193	9694175	<b>9766885</b>	9734401	9694328	9734516
2,000 psi	<b>9699206</b>	9694183	<b>9766876</b>	4201591	9694336	
3,000 psi	<b>9699215</b>	9694191	<b>9766893</b>	9734419	9694345	9734525
5,000 psi	<b>9699223</b>	9694205	<b>9766906</b>	4201604	9694353	
6,000 psi						
10,000 psi	9699231	9694213	<b>9766915</b>		9694361	
15,000 psi	9699249	9694221				
Accessory order codes (installed at factory)						
Front flange, SS		--				+ FF S
Rear flange, SS		+ RF S				+ RF S
U-clamp, steel		--				+ UC Z
U-clamp, SS		--				+ UC S
Restrictor				+ R		

Stock items shown in blue print.

## Type 21X.53

Type	212.53 (Dry)							
Size	2"		2½"			2½"		
Connection	LM	CBM	LM			CBM		
Conn. Size	1/4" NPT	1/4" NPT	1/4" NPT			1/4" NPT		
Press. Scale	PSI/BAR	PSI/BAR	PSI	PSI/BAR	PSI/KG/CM²	PSI	PSI/BAR	PSI/KG/CM²
30" Hg	4311833	4312074	4269978	4270231	4270496	4270755	4271017	4271271
30"-0-15 psi	4311841		4269986			4270763		
30"-0-30 psi			4269994	4270258	4270517	4270771	4271033	4271298
30"-0-60 psi	4311868		4270002	4270266	4270525	4270780	4271041	4271301
30"-0-100 psi			4270011			4270798		
30"-0-160 psi			4270029			4270801		
30"-0-200 psi			4270037			4270810		
15 psi	4311906	4315014	4270045	4270304	4270569	4270828	4271084	4271343
30 psi	4311914	4315022	4270053	4270312	4270577	4270836	4271092	4271351
60 psi	4311922	4315031	4270061	4270321	4270585	4270844	4271106	4271361
100 psi	4311931	4315049	4270070	4270339	4270593	4270852	4271114	4271379
160 psi	4311949	4315057	4270088	4270347	4270606	4270861	4271122	4271387
200 psi	4311957	4315065	4270096	4270355	4270614	4270879	4271131	4271395
300 psi	4311965	4315073	4270100	4270363	4270622	4270887	4271149	4271408
400 psi	4311973		4270118	4270371	4270631	4270895	4271157	4271416
600 psi	4311981	4315090	4270126	4270381	4270640	4270909	4271165	4271424
800 psi								
1,000 psi	4312007	4315111	4270142		4270666	4270925	4271181	4271441
1,500 psi	4312015	4315120	4270151		4270674	4270933	4271191	4271450
2,000 psi	4312023	4315138	4270169		4270682	4270941	4271203	4271468
3,000 psi	4312031	4315146	4270177		4270691	4270950	4271211	4271476
5,000 psi	4312040	4315154	4270185		4270703	4270968	4271220	4271484
6,000 psi							4271238	
7,500 psi	4312058	4315162					4271246	
10,000 psi	4312066	4315171	4270215	4270470	4270739	4270992	4271254	4271513
15,000 psi								
Accessory order codes (installed at factory)								
Front flange, SS	--	+ FF		--			+ FF	
Rear flange, SS	+ RF	+ RF		+ RF			+ RF	
U-clamp, steel	--	+ UC Z		--			+ UC Z	
U-clamp, SS	--	+ UC S		--			+ UC S	
Restrictor	+ R	+ R		+ R			+ R	

Stock items shown in blue print.

### Abbreviations

LM - Lower mount

CBM - Center back mount

SS - Stainless steel

Mechanical Pressure > Industrial Gauges > 21X.53

# Type 21X.53

MECHANICAL PRESSURE

Type	212.53 (Dry)		
Size	4"		
Connection	LM	LBM	
Conn. Size	1/4" NPT	1/2" NPT	
Press. Scale	PSI	PSI/KG/CM <sup>2</sup>	PSI/BAR
30" Hg	4271531	4271786	4272782
30"-0-15 psi	4271549	4271794	
30"-0-30 psi	4271557	4271808	
30"-0-60 psi	4271565	4271816	
30"-0-100 psi	4271573	4271824	
30"-0-160 psi	4271581	4271832	
30"-0-200 psi	4271590	4271841	
15 psi	4271602	4271859	4272855
30 psi	4271611	4271867	4272863
60 psi	4271620	4271875	4272871
100 psi	4271638	4271883	4272880
160 psi	4271646	4271891	4272898
200 psi	4271654	4271905	
300 psi	4271662	4271913	4272910
400 psi	4271671	4271921	
600 psi	4271689	4271930	4272936
800 psi			
1,000 psi	4271701	4271956	4272952
1,500 psi	4271719	4271964	4272961
2,000 psi	4271727	4271972	4272979
3,000 psi	4271735	4271981	4272987
5,000 psi	4271743	4271999	4272995
10,000 psi	4271760	4272013	
15,000 psi	4271778	4272021	
Accessory order codes (installed at factory)			
Front flange, SS	--		+ FF
Rear flange, SS	+ RF		+ RF
U-clamp, steel	--		+ UC Z
U-clamp, SS	--		+ UC S
Restrictor	+ R		+ R

Stock items shown in blue print.

**Abbreviations**

- LM - Lower mount
- LBM - Lower back mount
- SS - Stainless steel

## Type 23X.53

The rugged construction of WIKA type 23X.53 stainless steel gauges provides resistance to the most corrosive media and environments. These gauges feature 316 SS wetted parts and 304 SS case and crimped ring, and can be liquid-filled in the field.

### Standard Features

<b>Size:</b>	2", 2½" & 4"	<b>Accuracy:</b>	(2" & 2½") ± 2/1/2% of span ASME B40.100 Grade A
<b>Case:</b>	304 SS		(4") ± 1.0% of span (4" size) ASME B40.100 Grade 1A
<b>Wetted Parts:</b>	316 SS	<b>Connection:</b>	Lower or back mount
<b>Window:</b>	Polycarbonate		
<b>Dial:</b>	White aluminum		
<b>Ring:</b>	Stainless steel polished		
<b>Pointer:</b>	Black aluminum		



Type 232.53 - Dry case  
Type 233.53 - Liquid-filled case

Type	232.53 (Dry)					
Size	2"		2½"			
Connection	LM	CBM	LM	CBM		
Conn. Size	1/4" NPT		1/4" NPT			
Press. Scale	PSI	PSI	PSI	PSI	PSI/BAR	PSI/KPA
30" Hg	50533614	50533797	<b>9768777</b>	9768394		
30"-0-15 psi	50533622	50533801				
30"-0-30 psi	50533631	50533819	<b>9768769</b>	9768386		
30"-0-60 psi	50533649	50533827	9768750	9768378		
30"-0-100 psi	50533657	50533835				
30"-0-160 psi	50533665	50533843	9768742	9768360		
30"-0-200 psi	50533673	50533851				
15 psi	50533690	50533860	<b>9768734</b>	9768351		
30 psi	4222680	50533878	<b>9768726</b>	9768343		
60 psi	4282907	4214318	<b>9768718</b>	<b>9768335</b>	8992848	8993089
100 psi	4222698	4282915	<b>9768700</b>	<b>9768327</b>	8992856	8993097
160 psi	50466721	50466747	<b>9768696</b>	<b>9768319</b>	8992865	8993101
200 psi	4282923	50533886	<b>9768688</b>	9768300	8992873	8993119
300 psi	50533711	50533894	<b>9768670</b>	9768297	8992881	8993127
400 psi	50533720	50533908	9768661	9768289		
600 psi	4222702	50533916	<b>9768653</b>	9768270	9779685	9779693
800 psi	50533738	50533924				
1,000 psi	4222710	50533932	9768645	9768262	8992899	8993135
1,500 psi	50533746	50533941	9768637	9768254	8992903	8993144
2,000 psi	50533754	50533959	9768629	9768246	8992911	8993152
3,000 psi	50466739	50466755	<b>9768610</b>	9768238	8992929	8993160
5,000 psi	50533762	50533967	<b>9768602</b>	9768220	8992937	8993178
6,000 psi				8993208	8992945	8993186
10,000 psi	50533771	50533975	9768599	9768211	8992954	8993195
15,000 psi	50533789	50533983		9779715	9776715	9779723
Accessory order codes (installed at factory)						
Front flange, SS	--	+ FF S	--			+ FF S
U-clamp, steel	--	+ UC Z	--			+ UC Z
U-clamp, SS	--	+ UC S	--			+ UC S
Rear flange, SS				+ RF S		
Restrictor				+ R		
Glycerine fill						Type 233.53

### Available Options

- Dampened movement
- Drag pointer (max. reading indicator)
- Cleaned for oxygen service
- Special connection

### Applications

- With liquid-filled case for applications with high dynamic pressure pulsations or vibration
- Suitable for corrosive environments and gaseous or liquid media that will not obstruct the pressure system
- Process industry: chemical/petrochemical, power stations, mining, on and off shore, environmental technology, mechanical engineering and plant construction

### Abbreviations

LM - Lower mount  
CBM - Center back mount  
SS - Stainless steel

Stock items shown in blue print.

## Type 23X.53

Type	232.53 (Dry)		
Size	4"		
Connection	LM	LM	LBM
Conn. Size	1/4" NPT	1/2" NPT	1/2" NPT
Press. Scale	PSI	PSI	PSI
30" Hg	9767576	9768459	9737057
30"-0-15 psi	9737910	9768467	9737065
30"-0-30 psi	9767398	9768475	9737073
30"-0-60 psi	9767401	9768483	9737081
30"-0-100 psi	9737898	9737880	9737090
30"-0-160 psi	9767410	9768491	9737103
30"-0-200 psi	9737901	9768505	9737111
15 psi	9767428	9768513	9737120
30 psi	9767436	9768521	9737138
60 psi	9767444	9768530	9737146
100 psi	9767452	9768548	9737154
160 psi	9767460	9768556	9737162
200 psi	9767479	9768564	9737170
300 psi	9767487	9768572	9737189
400 psi	9767495	9768580	9737197
600 psi	9767509	9768963	9737200
800 psi			9737219
1,000 psi	9767517	9768858	9737227
1,500 psi		9768866	9737235
2,000 psi		9768807	9737243
3,000 psi		9768874	9737251
5,000 psi		9768823	9737260
10,000 psi		9768831	9737278
15,000 psi		9768840	9737286
Accessory order codes (installed at factory)			
Front flange, SS	--		+ FF S
U-clamp, steel	--		+ UC Z
U-clamp, SS	--		+ UC S
4½" panel kit	--		+ PM ADAPT
Rear flange, SS		+ RF S	
Restrictor		+ R	
Glycerine fill		Type 233.53	

Type	233.53 (Glycerine-filled)				
Size	2½"		4"		
Connection	LM	CBM	LM	LM	LBM
Conn. Size	1/4" NPT		1/4" NPT	1/2" NPT	
Press. Scale	PSI	PSI	PSI	PSI	PSI
30" Hg	9833646	9833310	9833124	9833328	9831504
30"-0-15 psi			9831775	9833336	9831512
30"-0-30 psi	9833638	9833302	9832993	9833345	9831520
30"-0-60 psi	9833620	9833298	9833000	9833353	9831538
30"-0-100 psi			9831759	9831741	9831546
30"-0-160 psi	9833612	9833280	9833018	9833361	9831555
30"-0-200 psi			9831767	9833379	9831563
15 psi	9833604	9833272	9833026	9833387	9831571
30 psi	9833590	9833264	9833035	9833395	9831589
60 psi	9833582	9833255	9833043	9833409	9831597
100 psi	9833574	9833247	9833051	9833417	9831601
160 psi	9833565	9833239	9833069	9833425	9831619
200 psi	9833557	9833221	9833077	9833434	9831627
300 psi	9833549	9833213	9833085	9833442	9831635
400 psi	9833531	9833205	9833094	9833450	9831644
600 psi	9833523	9833191	9833107	9833727	9831652
1,000 psi	9833515	9833183	9833115	9833697	9831678
1,500 psi	9833506	9833175		9833701	9831686
2,000 psi	9833493	9833166		9833655	9831695
3,000 psi	9833485	9833158		9833719	9831708
5,000 psi	9833476	9833140		9833663	9831716
10,000 psi	9833468	9833132		9833671	9831725
15,000 psi				9833689	9831733
Accessory order codes (installed at factory)					
See tables for type 232.53					

### Abbreviations

- LM - Lower mount
- CBM - Center back mount
- LBM - Lower back mount
- SS - Stainless steel

Stock items shown in blue print.

## Type 21X.54

Available in ranges up to 10,000 psi, WIKA type 21X.54 pressure gauges offer heavy-duty service in industrial applications and environments. They feature a stainless steel case and the industrial grade Swiss movement assures repeatable accuracy and long service life.



Type 212.54 - Dry case  
Type 213.54 - Liquid filled case

### Standard Features

<b>Size:</b>	4"	<b>Ring:</b>	Stainless steel polished
<b>Case:</b>	304 SS	<b>Pointer:</b>	Black aluminum - adjustable
<b>Wetted Parts:</b>	Copper alloy	<b>Accuracy:</b>	±1.0% of span (4" size)
<b>Window:</b>	Safety glass		ASME B40.100 Grade1A
<b>Dial:</b>	White aluminum	<b>Connection:</b>	Lower or back mount

Type	212.54 (Dry)		
Size	4"		
Connection	LM	LM	LBM
Conn. Size	1/4" NPT	1/2" NPT	
Press. Scale	PSI	PSI	PSI
30" Hg			
30"-0-15 psi			
30"-0-30 psi			
30"-0-60 psi			
30"-0-100 psi			
30"-0-160 psi			
30"-0-200 psi			
10 psi	4212011		
15 psi	4212029		
30 psi	4212037		
60 psi	4212045		
100 psi	<b>4212053</b>		
160 psi	4212061		
200 psi	<b>4212070</b>		
300 psi	<b>4212088</b>		
400 psi	4212096		
600 psi	4212100		
800 psi			
1,000 psi	4212126	4212363	
1,500 psi	4212134	4212371	
2,000 psi	4212142	4212380	
3,000 psi	4212151	4212398	
5,000 psi	4212169	4212401	
10,000 psi	4212177	4212410	
Accessory order codes (installed at factory)			
Front flange, SS	--		+ FF S
Rear flange, SS		+ RF S	
Restrictor		+ R	
Glycerine fill		Type 213.54	

### Available Options

- Instrument glass or acrylic window
- Drag pointer (maximum reading indicator)
- Cleaned for oxygen service
- Special connections

### Applications

- Vibration and shock resistant (with liquid filling)
- Stainless steel case with removable bayonet ring
- Pressure ranges up to 15,000 psi

### Abbreviations

LM - Lower mount  
CBM - Center back mount  
SS - Stainless steel

Stock items shown in **blue** print.

Mechanical Pressure > Industrial Gauges > 23X.54

## Type 23X.54

Type 23X.54 gauges feature 316 SS wetted parts and 304 SS case and bayonet ring, a laminated safety glass window and can be liquid-filled in the field. These gauges are ideal for process, chemical applications, oil exploration and production, power generation and pollution control equipment.



Type 232.54 - Dry case  
Type 233.54 - Liquid-filled case

### Standard Features

<b>Size:</b>	2½" & 4"	<b>Pointer:</b>	Black aluminum, adjustable
<b>Case:</b>	304 SS	<b>Accuracy:</b>	(2½") ± 2/1/2% of span
<b>Ring:</b>	Polished stainless steel		ASME B40.100 Grade A
<b>Wetted Parts:</b>	316 SS		(4") ± 1.0% of span (4" size)
<b>Window:</b>	Safety glass		ASME B40.100 Grade 1A
<b>Dial:</b>	White aluminum	<b>Connection:</b>	Lower and back mount

Type	232.54 (Dry)					
Size	2½"					
Connection	LM			CBM		
Conn. Size	1/4" NPT					
Press. Scale	PSI	PSI/BAR	PSI/KG/CM²	PSI	PSI/BAR	PSI/KG/CM²
30" Hg	9744827	9735245	9694531	9745068	9735385	9694778
30"-0-15 psi	9744835		9694549	9745076		
30"-0-30 psi	9744843		9694557	9745084		
30"-0-60 psi	9744851		9694565	9745092		
30"-0-100 psi	9744860		9694574	9745106		
30"-0-160 psi	9744878		9694582	9745114		
30"-0-200 psi	9744886		9694590	9745122		
15 psi	9744894	9735114	9694604	9745130	9735254	9694786
30 psi	<b>9744908</b>	9735122	9694612	9745149	9735262	9694795
60 psi	<b>9744916</b>	9735130	9694620	9745157	9735270	9694808
100 psi	<b>9744924</b>	9735148	9694638	9745165	9735288	9694816
160 psi	<b>9744932</b>	9735156	9694646	9745173	9735296	9694825
200 psi	<b>9744940</b>		9694655	9745181		9694833
300 psi	<b>9744959</b>	9735165	9694663	9745190	9735300	9694841
400 psi	9744967		9694671	9745203		9694859
600 psi	<b>9744975</b>	9735173	9694689	9745211	9735318	9694867
800 psi	9744983		9694697	9745220		
1,000 psi	9744991	9735181	9694701	9745238	9735326	9694875
1,500 psi	9745009	9735199	9694719	9745246	9735335	9694884
2,000 psi	9745017		9694727	9745254		9694892
3,000 psi	9745025	9735203	9694735	9745262	9735343	9694905
5,000 psi	9745033	9735211	9694744	9745270	9735351	9694914
10,000 psi	9745041	9735229	9694752	9745289	9735369	9694922
15,000 psi	9745050	9735237		9694760	9745297	9735377
Accessory order codes (installed at factory)						
Front flange, SS		--				+ FF S
U-Clamp, steel		--				+ UC Z
U-Clamp, SS		--				+ UC S
Rear flange, SS				+ RF S		
Restrictor				+ R		
Glycerine fill						Type 233.54

### Available Options

- Dampened movement
- Instrument glass or acrylic window
- Drag pointer (max. reading indicator)
- Cleaned for oxygen service
- Special connections

### Abbreviations

LM - Lower mount  
CBM - Center back mount  
SS - Stainless steel

Stock items shown in blue print.

## Type 23X.54

Type	232.54 (Dry)					
Size	4"					
Connection	LM	LM			LBM	
Conn. Size	1/4" NPT	1/2" NPT			1/2" NPT	
Press. Scale	PSI	PSI	PSI/BAR	PSI/KG/CM <sup>2</sup>	PSI	PSI/BAR
30" Hg	9745300	9745548	9734826	9694930	9745785	9734966
30"-0-15 psi	9745319	9745556		9694948	9745793	
30"-0-30 psi	9745327	9745564		9694956	9745807	
30"-0-60 psi	9745335	9745572		9694965	9745815	
30"-0-100 psi	9745343	9745580		9694973	9745823	
30"-0-160 psi	9745351	9745599			9745831	
30"-0-200 psi	9745360	9745602			9745840	
15 psi	9745378	9745610	9734699	9694981	9745858	9734835
30 psi	9745386	9745629	9734703	9694999	9745866	9734843
60 psi	9745394	9745637	9734711	9695006	9745874	9734851
100 psi	9745408	9745645	9734729	9695015	9745882	9734869
160 psi	9745416	9745653	9734737	9695023	9745890	9734877
200 psi	9745424	9745661		9695031	9745904	
300 psi	9745432	9745670	9734745	9695049	9745912	9734885
400 psi	9745440	9745688		9695057	9745920	
600 psi	9745459	9745696	9734754	9695065	9745939	9734894
800 psi	9745467	9745700		9695074	9745947	
1,000 psi	9745475	9745718	9734762	9695082	9745955	9734907
1,500 psi	9745483	9745726	9734770	9695090	9745963	9734915
2,000 psi	9745491	9745734		9695104	9745971	
3,000 psi	9745505	9745742	9734788	9695112	9745980	9734924
5,000 psi	9745513	9745750	9734796	9695120	9745998	9734932
10,000 psi	9745521	9745769	9734800	9695138	9746005	9734940
15,000 psi	9745530	9745777	9734818	9695146	9746013	9734958
Accessory order codes (installed at factory)						
Front flange, SS		--			+ FF S	
4½" panel kit		--			+ PM ADAPT	
U-clamp, steel		--			+ UC Z	
U-clamp, SS		--			+ UC S	
Rear flange, SS			+ RF S			
Restrictor			+ R			
Glycerine fill			Type 233.54			

Stock items shown in blue print.

### Abbreviations

- LM - Lower mount
- LBM - Lower back mount
- SS - Stainless steel

## Type 23X.54

Type	233.54 (Glycerine-filled)				
Size	2½"		4"		
Connection	LM	CBM	LM	LM	LBM
Conn. Size	1/4" NPT		1/4" NPT	1/2" NPT	
Press. Scale	PSI	PSI	PSI	PSI	PSI
30" Hg	9831784	9832020	9832275	9832518	9832755
30"-0-15 psi	9831792	9832046	9832284	9832526	9832764
30"-0-30 psi	9831805	9832055	9832292	9832535	9832772
30"-0-60 psi	9831814	9832063	9832305	9832543	9832780
30"-0-100 psi	9831822	9832071	9832314	9832551	9832798
30"-0-160 psi	9831830	9832089	9832322	9832569	9832802
30"-0-200 psi	9831848	9832097	9832330	9832577	9832810
15 psi	9831856	9832101	9832348	9832585	9832828
30 psi	<b>9831865</b>	9832119	9832356	9832594	9832836
60 psi	<b>9831873</b>	9832127	9832365	9832607	9832845
100 psi	<b>9831881</b>	9832135	9832373	<b>9832615</b>	9832853
160 psi	<b>9831899</b>	9832144	9832381	9832624	9832861
200 psi	<b>9831903</b>	9832152	9832399	<b>9832632</b>	9832879
300 psi	<b>9831911</b>	9832160	9832403	<b>9832640</b>	9832887
400 psi	9831929	9832178	9832411	9832658	9832895
600 psi	<b>9831937</b>	9832186	9832429	<b>9832666</b>	9832909
800 psi	9831945	9832195	9832437	9832675	9832917
1,000 psi	<b>9831954</b>	9832208	9832445	<b>9832683</b>	9832925
1,500 psi	<b>9831962</b>	9832216	9832454	<b>9832691</b>	9832934
2,000 psi	<b>9831970</b>	<b>9832225</b>	9832462	<b>9832705</b>	9832942
3,000 psi	<b>9831988</b>	9832233	9832470	<b>9832713</b>	9832950
5,000 psi	9831996	<b>9832241</b>	9832488	<b>9832721</b>	9832968
10,000 psi	9832004	9832259	9832496	<b>9832739</b>	9832976
15,000 psi	9832012	9832267	9832500	<b>9832747</b>	9832985

Accessory order codes (installed at factory)  
See tables for type 232.54

Stock items shown in **blue print**.

### Abbreviations

- LM - Lower mount
- LBM - Lower back mount
- CBM- Center back mount
- SS - Stainless steel

Type	232.54 XMAS Tree Gauge
Size	4"
Connection	LM
Conn. Size	1/2" NPT
Press. Scale	PSI
1,000 psi	<b>8992350</b>
1,500 psi	<b>8992342</b>
2,000 psi	<b>8992334</b>
3,000 psi	<b>8992325</b>
5,000 psi	<b>8992317</b>
10,000 psi	<b>8992309</b>

Type	232.54 Receiver
Size	2½"
Connection	LM
Conn. Size	1/4" NPT
100%	9749470
10 sq. ft.	9749462

## Type 233.55

The type 233.55 LBM is specifically designed and manufactured to exact panel builder requirements. With exclusive features, it is ideal when used for panel mount gauges in the oil and gas, refinery, petrochemical, and food and beverage industries.



### Standard Features

<b>Size:</b>	2½"	<b>Pointer:</b>	Black aluminum
<b>Case:</b>	304 SS	<b>Accuracy:</b>	±2/12% of span
<b>Wetted Parts:</b>	316 SS		ASME B40.100 Grade A
<b>Window:</b>	Safety glass	<b>Connection:</b>	Lower back mount
<b>Dial:</b>	White aluminum	<b>Liquid fill:</b>	Glycerine
<b>Ring:</b>	Stainless steel polished	<b>Restrictor:</b>	Standard

Type	233.55			
Size	2½"			
Connection	LBM			
Conn. Size	1/4" NPT			
Press. Scale	PSI	PSI/BAR	PSI/KPA	PSI/KG/CM <sup>2</sup>
30" Hg	4282811	4283078	4283337	4283591
30"-0-15 psi	4282829	4283086	4283345	4283604
30"-0-30 psi	4282837	4283094	4283354	4283613
30"-0-60 psi	4282845	4283107	4283362	4283621
30"-0-100 psi	4282854	4283115	4283370	4283639
30"-0-160 psi	4282862	4283124	4283388	4283647
30"-0-200 psi	4282870	4283133	4283396	4283655
15 psi	4282888	4283141	4283400	4283664
30 psi	4282896	4283159	4283418	4283672
60 psi	4282900	4283167	4283426	4283680
100 psi	4282918	4283175	4283434	4283698
160 psi	4282926	4283184	4283443	4283702
200 psi	4282934	4283192	4283451	4283710
300 psi	4282943	4283204	4283469	4283728
400 psi	4282951	4283214	4283477	4283736
600 psi	4282969	4283222	4283485	4283744
800 psi	4282977	4283230	4283494	4283753
1,000 psi	4282985	4283248	4283507	4283761
1,500 psi	4282994	4283256	4283515	4283779
2,000 psi	4283000	4283264	4283524	4283787
3,000 psi	4283018	4283273	4283532	4283795
5,000 psi	4283026	4283281	4283540	4283809
6,000 psi	4283034	4283299	4283558	4283817
10,000 psi	4283044	4283303	4283566	4283825
15,000 psi	4283052	4283311	4283574	4283834
20,000 psi	4283060	4283329	4283583	4283842

### Available Options

- Special connections

### Applications

- With liquid-filled case for applications with high dynamic pressure pulsations or vibration
- Suitable for corrosive environments and gaseous or liquid media that will not obstruct the pressure system
- Process industry: chemical/petrochemical, power stations, mining, on and off shore, environmental technology, mechanical engineering and plant construction

### Abbreviations

LM - Lower mount  
 LBM - Lower back mount  
 SS - Stainless steel

Stock items shown in blue print.

Mechanical Pressure > Industrial Gauges > 23X.30

## Type 23X.30

WIKA type 23X.30 stainless steel gauges have a solid-front/blow-out back safety case. This gauge is an ideal choice for process, chemical, petrochemical, oil exploration and production, power generation applications and any other application which demands reliable pressure measurement instrumentation.



Type 232.30 - Dry case  
Type 233.30 - Liquid-filled case (LM only)

### Standard Features

<b>Size:</b>	2½" & 4"	<b>Pointer:</b>	Black aluminum, adjustable
<b>Case:</b>	304 SS	<b>Accuracy:</b>	(2½") ± 2/1/2% of span ASME B40.100 Grade A (4") ± 1.0% of span (4" size) ASME B40.100 Grade1A
<b>Ring:</b>	Polished stainless steel	<b>Connection:</b>	Lower and back mount
<b>Wetted Parts:</b>	316 SS		
<b>Window:</b>	(2½") Polycarbonate (4") Safety glass		
<b>Dial:</b>	White aluminum		

Type	232.30 (Dry)				233.30 (Filled)	
	2½"		4"		2½"	4"
<b>Connection</b>	LM	LBM	LM	LBM	LM	LM
<b>Conn. Size</b>	1/4" NPT		1/2" NPT		1/4" NPT	1/2" NPT
<b>Press. Scale</b>	PSI	PSI	PSI	PSI	PSI	PSI
30" Hg	9305645	9367071	9366750	8596271	9305637	
30"-0-15 psi	9365044	9365079			9366580	
30"-0-30 psi	9314822	9481486	9366776	9562559	9364994	
30"-0-60 psi	9305378	9197141			9366598	
30"-0-100 psi	9542353	9319646			9367853	
30"-0-160 psi	9365052	9469168			9319638	
30"-0-200 psi	9367250				9637141	
15 psi	9305653	9244808	9366830	9253289	9305394	9361081
30 psi	9240160	9244816	9366849	9253270	9251618	9361090
60 psi	9240179	9244832	9366857	8596298	9251626	9361103
100 psi	9240187	9244840	9366865	9253084	9251634	9361111
160 psi	9240195	9244859	9366873	8596301	9251642	9361120
200 psi	9240209	9244867	9366881	9253076	9251650	9361138
300 psi	9240217	9244875	9366890	9821082	9251669	9361146
400 psi	9240225	9244883	9366903	8542805	9251677	9361154
600 psi	9240233	9244905	9366911	9253050	9251685	9361162
800 psi					9251693	9361170
1,000 psi	9240411	9244913	9366938	8513554	9251707	9361189
1,500 psi	9240420	9244921	9366946	8541574	9251715	9361197
2,000 psi	9240438	9244930	9366954		9251723	9361200
3,000 psi	9240446	9244948	9366962		9251731	9361219
5,000 psi	9240454	9244956	9366970		9251740	9361227
10,000 psi	9305661	9244964	9366989		9305629	9361235
15,000 psi	9482644	9153810	9366997		9542345	9361243
20,000 psi	N/A	N/A	8596336		N/A	9829601
Accessory order codes (installed at factory)						
Front flange, SS	+ FF S		+ FF S		+ FF S	+ FF S
4½" panel kit	--		+ PM		--	+ PM
Restrictor	+ R		+ R		+ R	+ R

Stock items shown in blue print.

### Available Options

- Dampened movement
- Drag pointer (max. reading indicator)
- Cleaned for oxygen service
- Magnetic or inductive contact switches
- Special connections

### Applications

- With liquid-filled case for applications with high dynamic pressure pulsations or vibration
- Suitable for corrosive environments and gaseous or liquid media that will not obstruct the pressure system
- Process industry: chemical/petrochemical, power stations, mining, on and off shore, environmental technology, mechanical engineering and plant construction

### Abbreviations

LM - Lower mount  
LBM - Lower back mount  
SS - Stainless steel

Mechanical Pressure > Industrial Gauges > 23X.50

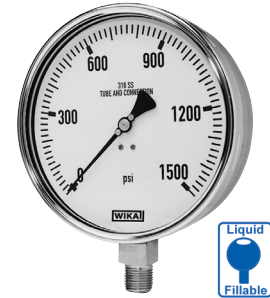
## Type 23X.50

### Applications

- With liquid-filled case for applications with high dynamic pressure pulsations or vibration
- Suitable for corrosive environments and gaseous or liquid media that will not obstruct the pressure system
- Process industry: chemical/petrochemical, power stations, mining, on and offshore, environmental technology, mechanical engineering and plant construction

### Standard Features

<b>Size:</b>	2½", 4", 4½" & 6"	<b>Pointer:</b>	Black aluminum, adjustable
<b>Case:</b>	304 SS	<b>Accuracy:</b>	(2½") ±2/12% of span
<b>Wetted Parts:</b>	316 SS		ASME B40.100 Grade A
<b>Window:</b>	(2½") Polycarbonate (4" & larger) Safety glass		(4" & up) ±1% of span
<b>Dial:</b>	White aluminum	<b>Connection:</b>	Lower or back mount
<b>Ring:</b>	Stainless steel polished		



Type 232.50 - Dry case  
Type 233.50 - Liquid-filled case

### Available Options

- Dampened movement
- Safety glass window
- Drag pointer (max. reading indicator)
- Cleaned for oxygen service
- Magnetic or inductive contact switches
- Special connections

Type	232.50 (Dry)					
Size	2½"		4"		4½"	
Connection	LM	CBM	LM	LBM	LM	LBM
Conn. Size	1/4" NPT		1/2" NPT		1/2" NPT	
Press. Scale	PSI	PSI	PSI	PSI	PSI	PSI
30" Hg	9110992				50474511	50474588
30"-0-15 psi					50474529	50474596
30"-0-30 psi					50474537	50474600
30"-0-60 psi					50474545	50474618
30"-0-100 psi					50474553	50474626
30"-0-160 psi					50474561	50474634
30"-0-200 psi					50474570	50474642
10 psi						
15 psi	9111000	9110062	9319492		50474171	50474359
30 psi	9111018	9110070	9226860		50474197	50474367
60 psi	9111026	9110089	9154671		50474201	50474375
100 psi	9111034	9110097	9189459	50999452	50474219	50474383
160 psi	9111042	9110100	9189467		50474235	50474391
200 psi	9111050	9110119	9154701		50474243	50474405
300 psi	9111069	9110127	9154710		50474251	50474413
400 psi	9111077	9110143	9154728		50474260	50474421
600 psi	9111085	9110151			50474278	50474430
800 psi					50474286	50474448
1,000 psi	9111107	9110178	9154752	50997591	50474294	50474456
1,500 psi	9111115	9110186			50474308	50474464
2,000 psi	9111123	9110194	9212744		50474316	50474472
3,000 psi	9111131	9110208	9232087		50474324	50474481
5,000 psi	9111140	9110216	9145664		50474332	50474499
10,000 psi	9111158	9110224	9319506		50474341	50474502
15,000 psi					50474651	50474677
20,000 psi					50474669	50474685
Accessory order codes (installed at factory)						
Front flange, SS	--	+ FF S	--	+ FF S	--	+ FF S
Rear flange, SS				+ RF S		
Restrictor				+ R		
Glycerine fill				Type 233.50		

Type	232.50 (Dry)		
Size	6"		
Connection	LM	LM	LBM
Conn. Size	1/2" NPT		
Press. Scale	PSI	PSI/BAR	PSI
30" Hg	4213688	4213939	4214218
30"-0-15 psi	4213696		4214226
30"-0-30 psi	4213700		4214234
30"-0-60 psi	4213718		4214242
30"-0-100 psi	4213726		4214251
30"-0-160 psi	4213734		4214269
30"-0-200 psi	4213742		4214277
10 psi			
15 psi	4213751	4213947	4214285
30 psi	4213769	4213955	4214293
60 psi	<b>4213777</b>	4213963	4214307
100 psi	<b>4213785</b>	4213971	4214315
160 psi	<b>4213793</b>	4213981	4214323
200 psi	<b>4213807</b>		4214331
300 psi	<b>4213815</b>	4213999	4214340
400 psi	4213823		4214358
600 psi	<b>4213831</b>	4214005	4214366
800 psi	4213840		4214374
1,000 psi	<b>4213858</b>	4214013	4214382
1,500 psi	4213866	4214021	4214391
2,000 psi	<b>4213874</b>		4214404
3,000 psi	4213882	4214030	4214412
5,000 psi	4213891	4214048	4214421
10,000 psi	4213904	4214056	4214439
15,000 psi	4213912	4214064	4214447
20,000 psi	4213921		4214587
Accessory order codes (installed at factory)			
Front flange, SS	--	--	+ FF S
Rear flange, SS		+ RF S	
Restrictor		+ R	
Glycerine fill		Type 233.50	

Abbreviations LM - Lower mount, LBM - Lower back mount, SS - Stainless steel

Stock items shown in blue print.

# Type 21X.34



Specifically designed for the chemical and petroleum processing industries, WIKA XSEL™ process gauges have the construction, materials and engineering it takes to withstand rugged conditions. They are engineered to deliver years of accurate service, while withstanding vibration, corrosive media, corrosive environments and a wide range of temperature extremes. With the proven durability and performance of the XSEL™ process gauge series, it comes with an industry best warranty.



Type 212.34 - Dry case  
Type 213.34 - Liquid-filled case

MECHANICAL PRESSURE

## Standard Features

<b>Size:</b>	4½"	<b>Pointer:</b>	Black aluminum, adjustable
<b>Case:</b>	Black Pocan®	<b>Accuracy:</b>	±0.5% of span
<b>Ring:</b>	Threaded black Pocan®	<b>Connection:</b>	ASME B40.100 Grade 2A
<b>Wetted Parts:</b>	Copper alloy	<b>Restrictor:</b>	Standard
<b>Window:</b>	Acrylic		
<b>Dial:</b>	White aluminum		

Type	212.34		213.34
<b>Size</b>	4½"		
<b>Connection</b>	LM		
<b>Conn. Size</b>	1/4" NPT	1/2" NPT	1/4" NPT
<b>Press. Scale</b>	PSI	PSI	PSI
30" Hg	9834036	9834257	9834740
30"-0-15 psi	9834044	9834265	9834758
30"-0-30 psi	9834052	9834273	9834766
30"-0-60 psi	9834060	9834281	9834775
30"-0-100 psi	9834079	9834290	9834783
30"-0-160 psi	9834087	9834303	9834791
30"-0-200 psi	9834095		9834805
15 psi	9834117	9834338	9834813
30 psi	9834125	9834346	9834821
60 psi	9834133	9834354	9834839
100 psi	<b>9834141</b>	<b>9834362</b>	9834847
160 psi	9834150	<b>9834370</b>	9834855
200 psi	<b>9834168</b>	9834389	9834864
300 psi	<b>9834176</b>	<b>9834397</b>	9834872
400 psi	9834184	9834400	9834880
600 psi	9834192	9834419	9834898
800 psi	9834982	9834990	9834902
1,000 psi	9834206	9834427	9834910
Accessory order codes (installed at factory)			
4½ panel kit	+ PM		
External zero adjust	+ EXT ADJ		
Dampened movement	+ DAMP	--	
Glycerine fill	Type 213.34		
Silicone fill	Type 213.34 + SIL		

## Available Options

- Dampened movement
- Safety glass or instrument glass window
- Drag pointer (maximum reading indicator)
- Cleaned for oxygen service
- Magnetic or inductive contact switches
- Special connections

## Applications

- A liquid-filled case and socket restrictor are available for applications with high dynamic pressure pulsations or vibration
- Suitable for corrosive environments and gaseous or liquid media that will not obstruct the pressure system
- Process industry: chemical/petrochemical, power stations, mining, on and offshore, environmental technology, mechanical engineering and plant construction

### Abbreviations

LM - Lower mount  
SS - Stainless steel

Stock items shown in blue print.

## Type 22X.34



Type 222.34 - Dry case  
Type 223.34 - Liquid-filled case

Specifically designed for the chemical and petroleum processing industries, WIKA XSEL™ process gauges have the construction, materials and engineering it takes to withstand rugged conditions. They are engineered to deliver years of accurate service, while withstanding vibration, corrosive media, corrosive environments and a wide range of temperature extremes. WIKA is so confident in the durability and performance of the XSEL™ process gauge series, that it comes with an industry leading warranty.

### Standard Features

<b>Size:</b>	4½"	<b>Pointer:</b>	Black aluminum, adjustable
<b>Case:</b>	Black Pocan®	<b>Accuracy:</b>	±0.5% of span
<b>Ring:</b>	Threaded black Pocan®		ASME B40.100 Grade 2A
<b>Wetted Parts:</b>	1019 steel / 316L SS	<b>Connection:</b>	Lower mount
<b>Window:</b>	Acrylic	<b>Restrictor:</b>	Standard
<b>Dial:</b>	White aluminum		

Type	222.34
<b>Size</b>	4½"
<b>Connection</b>	LM
<b>Conn. Size</b>	1/2" NPT
<b>Press. Scale</b>	PSI
30" Hg	4332670
30"-0-15 psi	4353639
30"-0-30 psi	4353647
30"-0-60 psi	4353656
30"-0-100 psi	4353664
30"-0-160 psi	4353672
30"-0-200 psi	4353680
15 psi	4353532
30 psi	4332688
60 psi	4332696
100 psi	4332709
160 psi	4332717
200 psi	4332725
300 psi	4353698
400 psi	4332733
600 psi	4332741
800 psi	4353702
1,000 psi	4332751
1,500 psi	4353728
2,000 psi	4353736
3,000 psi	4353745
5,000 psi	4353753
Accessory order codes (installed)	
4½ panel kit	+ PM
External zero adjust	+ EXT ADJ
Dampened movement	+ DAMP
Silicone fill	Type 213.34 + SIL

### Available Options

- Dampened movement
- Safety glass or instrument glass window
- Drag pointer (maximum reading indicator)
- Cleaned for oxygen service
- Magnetic or inductive contact switches
- Special connections

### Applications

- A liquid-filled case and socket restrictor are available for applications with high dynamic pressure pulsations or vibration
- Suitable for corrosive environments and gaseous or liquid media that will not obstruct the pressure system
- Process industry: chemical/petrochemical, power stations, mining, on and off shore, environmental technology, mechanical engineering and plant construction

### Abbreviations

LM - Lower mount  
SS - Stainless steel

Stock items shown in blue print.

Mechanical Pressure > Process Gauges > 23X.34

# Type 23X.34



Specifically designed for the chemical and petroleum processing industries, WIKA XSEL™ process gauges have the construction, materials and engineering it takes to withstand rugged conditions. They are engineered to deliver years of accurate service, while withstanding vibration, corrosive media, corrosive environments and a wide range of temperature extremes. WIKA is so confident in the durability and performance of the XSEL™ process gauge series, that it comes with an industry leading warranty.

## Standard Features

<b>Size:</b>	4½" & 6"	<b>Pointer:</b>	Black aluminum, adjustable
<b>Case:</b>	Black Pocan®	<b>Accuracy:</b>	±0.5% of span
<b>Ring:</b>	Threaded black Pocan®	<b>Connection:</b>	ASME B40.100 Grade 2A
<b>Wetted Parts:</b>	316L SS	<b>Restrictor:</b>	Standard
<b>Window:</b>	Acrylic		
<b>Dial:</b>	White aluminum		



Type 232.34 - Dry case  
Type 233.34 - Liquid-filled case

MECHANICAL PRESSURE

Type	232.34 (Dry)			233.34 (Filled)			
Size	4½"			4½"			
Connection	LM	LM	LBM	LM	LM		
Conn. Size	1/4" NPT	1/2" NPT	1/2" NPT	1/4" NPT	1/2" NPT		
Press. Scale	PSI	PSI	PSI/KPA	PSI	PSI	PSI/KPA	
30" Hg	<b>9834478</b>	9834729	9837604	4217004	9833735	9833914	9836769
30"-0-15 psi	9834486	<b>9834737</b>	9837566		9833744	9833922	9836777
30"-0-30 psi	9834494	<b>9834745</b>	9837523	4220854	9833752	<b>9833930</b>	9836785
30"-0-60 psi	9834508	<b>9834753</b>	9837485		9833760	9833948	9836794
30"-0-100 psi	9834516	9834761	9792818		9833778	9833956	9836807
30"-0-160 psi	9834524	9834770			9833786	9833965	
30"-0-200 psi	9834532	9834788	9837361		9833795	9833973	
30"-0-300 psi	4260163	4260180					
30"-0-400 psi	4260171	4260198					
15 psi	9834559	<b>9834800</b>	9776885	4242131	9833808	9833981	9836824
30 psi	<b>9834567</b>	<b>9834818</b>	9837680	4247923	9833816	<b>9833999</b>	9836832
60 psi	<b>9834575</b>	<b>9834826</b>	9776877	9797607	9833825	<b>9834006</b>	9836840
100 psi	<b>9834583</b>	<b>9834834</b>	<b>9837760</b>	9797615	9833833	<b>9834015</b>	9836858
160 psi	<b>9834591</b>	<b>9834842</b>	<b>9776869</b>	9797624	9833841	<b>9834023</b>	9836866
200 psi	<b>9834605</b>	<b>9834850</b>	<b>9837841</b>	9797632	9833859	<b>9834031</b>	9836875
300 psi	<b>9834613</b>	<b>9834869</b>	<b>9837884</b>	9797640	9833867	<b>9834049</b>	9836883
400 psi	9834621	<b>9834877</b>	<b>8985116</b>	9797658	9833875	<b>9834057</b>	9836891
600 psi	<b>9834630</b>	<b>9834885</b>	<b>9837965</b>	9797666	9833884	<b>9834065</b>	9836905
800 psi	9835008	<b>9834974</b>		9797675	9833905	9834155	
1,000 psi	9834648	<b>9834893</b>	9778918	9797683	9833892	<b>9834074</b>	9836913
1,500 psi	9793318	<b>9834907</b>	9838082	4247931		<b>9834082</b>	9836921
2,000 psi	9793661	<b>9834915</b>	9838120	4247940		<b>9834090</b>	9836939
3,000 psi	9748911	<b>9834923</b>	9838163	4247958		<b>9834104</b>	9836947
5,000 psi	9793521	<b>9834931</b>	9838201	4247966		9834112	9836955
10,000 psi	9793679	9834940	9838244			9834120	\$184.25
15,000 psi		9834958				9834138	
20,000 psi	N/A	9834966			N/A	9834146	
Accessory order codes (installed at factory)							
4½ panel kit				+ PM			
External zero adjust				+ EXT ADJ			
Dampened movement	+ DAMP						--
Glycerine fill	Type 233.34						--
Silicone fill	Type 233.34 + SIL						-

## Available Options

- Dampened movement
- Safety glass or instrument glass window
- Drag pointer (maximum reading indicator)
- Cleaned for oxygen service
- Magnetic or inductive contact switches
- Special connections

## Applications

- A liquid-filled case and socket restrictor are available for applications with high dynamic pressure pulsations or vibration
- Suitable for corrosive environments and gaseous or liquid media that will not obstruct the pressure system
- Process industry: chemical/ petrochemical, power stations, mining, on and offshore, environmental technology, mechanical engineering and plant construction

## Abbreviations

LM - Lower mount  
SS - Stainless steel

Stock items shown in blue print

# Type 23X.34

MECHANICAL PRESSURE

Type	232.34 (Damp)	232.34 (Dry)
<b>Size</b>	<b>4½"</b>	<b>6"</b>
<b>Connection</b>	LM	LM
<b>Conn. Size</b>	1/2" NPT	1/2" NPT
<b>Press. Scale</b>	PSI	PSI
30" Hg	4334478	4317492
30"-0-15 psi		
30"-0-30 psi		
30"-0-60 psi		
30"-0-100 psi		
30"-0-160 psi		
30"-0-200 psi		
30"-0-300 psi		
30"-0-400 psi		
15 psi	4339623	
30 psi	4334486	4317505
60 psi	4334494	4317513
100 psi	4333960	4317590
160 psi	4333978	4317521
200 psi	4334507	4317531
300 psi	4337329	4317549
400 psi	4333986	
600 psi	4334515	4317557
800 psi	4334523	
1,000 psi	4334531	4317565
1,500 psi	4334541	4343281
2,000 psi	4333994	
3,000 psi	4334559	
5,000 psi	4334567	
10,000 psi		
15,000 psi		
20,000 psi		
Accessory order codes (installed at factory)		
4½ panel kit	+ PM	--
External zero adjust	+ EXT ADJ	--
Glycerine fill	Type 233.34	
Silicone fill	Type 233.34 + SIL	

Liquid Fill Conversion Kits (Use for preparing a dry gauge for liquid filling)		
For use with	Conn.	P/N
Glycerine/Silicone Material: EPDM	LM	1126768
	LBM	2044480
Halocarbon® Material: Viton®	LM	1654268
	LBM	2044498

**Abbreviations**  
 LM - Lower mount  
 LBM - Lower back mount  
 SS - Stainless steel

Stock items shown in blue print

## Type 26X.34

XSEL™



Specifically designed for the chemical and petroleum processing industries, WIKA XSEL™ process gauges have the construction, materials and engineering it takes to withstand rugged conditions. They are engineered to deliver years of accurate service, while withstanding vibration, corrosive media, corrosive environments and a wide range of temperature extremes. WIKA is so confident in the durability and performance of the XSEL™ process gauge series, that it comes with an industry leading warranty.

### Standard Features

**Size:** 4½"  
**Case:** Black Pocan®  
**Ring:** Threaded black Pocan®  
**Wetted Parts:** Monel® M400 alloy  
**Window:** Acrylic  
**Dial:** White aluminum

**Pointer:** Black aluminum, adjustable  
**Accuracy:** ±0.5% of span  
 ASME B40.100 Grade 2A  
**Connection:** Lower mount  
**Restrictor:** Standard

Type 262.34 - Dry case  
 Type 263.34 - Liquid-filled case

Type	262.34
<b>Size</b>	4½"
<b>Connection</b>	LM
<b>Conn. Size</b>	1/2" NPT
<b>Press. Scale</b>	PSI
30" Hg	9835016
30"-0-15 psi	9835024
30"-0-30 psi	9835032
30"-0-60 psi	9835040
30"-0-100 psi	9835059
30"-0-160 psi	9835067
30"-0-200 psi	9835075
15 psi	9835091
30 psi	9835105
60 psi	9835113
100 psi	9835121
160 psi	9835130
200 psi	<b>9835148</b>
300 psi	9835156
400 psi	9835164
600 psi	<b>9835172</b>
800 psi	9835180
1,000 psi	9835199
1,500 psi	9835202
2,000 psi	9835210
3,000 psi	9835229
5,000 psi	9835237
10,000 psi	
15,000 psi	
Accessory order codes (installed)	
4½ panel kit	+ PM
External zero adjust	+ EXT ADJ
Dampened movement	+ DAMP
Glycerine fill	Type 263.34
Silicone fill	Type 263.34 + SIL

### Available Options

- Dampened Movement
- Safety glass or instrument glass window
- Drag pointer (max. reading indicator)
- Cleaned for oxygen service
- Magnetic or inductive contact switches
- Special connections

### Applications

- A liquid-filled case and socket restrictor are available for applications with high dynamic pressure pulsations or vibration
- Suitable for corrosive environments and gaseous or liquid media that will not obstruct the pressure system
- Process industry: chemical/petrochemical, power stations, mining, on and offshore, environmental technology, mechanical engineering and plant construction

### Abbreviations

LM - Lower mount  
 SS - Stainless steel

Stock items shown in blue print

## Type 232.34DD

WIKA type 232.34DD direct drive process gauges feature a direct drive, movementless pressure system. With a shock absorbing Bourdon tube design, these gauges are an effective means for guarding against severe shock and vibration applications. The 232.34DD is manufactured in a standard yellow 4½" process gauge style case and comes standard completely equipped with an external zero adjustment and a high 0.5% full scale accuracy.

### Standard Features

<b>Size:</b>	4½"	<b>Pointer:</b>	Black aluminum, adjustable
<b>Case:</b>	Yellow thermoplastic, solid front	<b>Accuracy:</b>	±0.5% of span
<b>Ring:</b>	Stainless steel		ASME B40.100 Grade 2A
<b>Wetted Parts:</b>	X-750 Inconel® / 316 SS	<b>Connection:</b>	Lower mount
<b>Window:</b>	Polycarbonate	<b>Restrictor:</b>	Standard
<b>Dial:</b>	White aluminum		



Type	232.34DD
<b>Size</b>	4½"
<b>Connection</b>	LM
<b>Conn. Size</b>	½" NPT
<b>Press. Scale</b>	PSI
-30"-0-30 psi	52049124
-30"-0-60 psi	52049132
-30"-0-150 psi	52049141
-30"-0-300 psi	52049159
30 psi	52049167
60 psi	52049183
100 psi	52049191
160 psi	52049205
200 psi	52049221
300 psi	52049230
500 psi	52049248
1,000 psi	52049256
1,500 psi	52049272
2,000 psi	52049281
3,000 psi	52049299
5,000 psi	52049302
10,000 psi	52049311

### Available Options

- Cleaned for use in oxygen service
- Special connection

### Applications

- Where high dynamic pressure pulsations or vibration exist
- Suitable for corrosive environments and gaseous or liquid media that will not obstruct the pressure system
- Process industry: chemical/petrochemical, power stations, mining, on and offshore, environmental technology, mechanical engineering and plant construction

**Abbreviations**  
 LM - Lower mount  
 SS - Stainless steel

Stock items shown in **blue print**

# Type 212.25

WIKA's type 212.25 4½" and 6" pressure gauges feature a solid-front aluminum case with a hinged ring for easy access to the adjustable pointer. These gauges are supplied with three threaded bolts in the back of the case which line up with existing standard panel hole patterns.



MECHANICAL PRESSURE

## Standard Features

<b>Size:</b>	4½" & 6"	<b>Accuracy:</b>	±0.5% of span
<b>Case:</b>	Black-painted aluminum		ASME B40.100 Grade 2A
<b>Ring:</b>	Black-painted aluminum	<b>Connection:</b>	Lower back mount
<b>Wetted Parts:</b>	Copper alloy		
<b>Window:</b>	Flat instrument glass		
<b>Dial:</b>	White aluminum		
<b>Pointer:</b>	Black aluminum, adjustable		

Type	212.25		
Size	4½"	6"	
<b>Connection</b>	LBM		
<b>Conn. Size</b>	1/4" NPT	1/2" NPT	1/2" NPT
<b>Press. Scale</b>	PSI	PSI	PSI
30" Hg	4234970	4235223	4235976
30"-0-15 psi	4234988	4235231	4235984
30"-0-30 psi	4234996	4235240	4235992
30"-0-60 psi	4235002	4235258	4236009
30"-0-100 psi	4235011	4235266	4236017
30"-0-160 psi	4235029	4235274	4236025
30"-0-200 psi	4235037	4235282	4236033
15 psi	4235045	4235291	4236041
30 psi	4235053	4235304	4236050
60 psi	4235061	4235312	4236068
100 psi	4235070	4235321	4236076
160 psi	4235088	4235339	4236084
200 psi	4235096	4235347	4236092
300 psi	4235100	4235355	4236106
400 psi	4235118	4235363	4236114
600 psi	4235126	4235371	4236122
800 psi	4235134	4235381	4236131
1,000 psi	4235142	4235399	4236149
Accessory order codes (installed at factory)			
Restrictor	+ R		

## Available Options

- Dampened movement
- Safety glass window
- Cleaned for oxygen service
- Special connections
- Instrument glass window

## Applications

- Pressure monitoring panels
- Suitable for gaseous or liquid media that will not obstruct the pressure system or attack copper alloy parts
- Process industry: chemical/petrochemical, power stations, mining, on and offshore, environmental technology, mechanical engineering and plant construction

## Abbreviations

LBM - Lower back mount  
 SS - Stainless steel

Stock items shown in **blue print**

## Type 232.25

WIKA type 232.25 gauges have a glass covered hinged ring front with securing screws as standard. The adjustable pointer is easily accessed under the hinged ring front. Designed for panel mounting, the type 232.25 gauge features 316 SS wetted parts and a one-piece aluminum solid-front safety case design. Well-suited for installations in process panel and control applications, type 232.25 gauges meet ASME Grade 2A accuracy standards.



### Standard Features

<b>Size:</b>	4½" & 6"	<b>Pointer:</b>	Black aluminum, adjustable
<b>Case:</b>	Black-painted aluminum	<b>Accuracy:</b>	±0.5% of span
<b>Ring:</b>	Black-painted aluminum		ASME B40.100 Grade 2A
<b>Wetted Parts:</b>	316L SS	<b>Connection:</b>	Lower back mount
<b>Window:</b>	Flat instrument glass		
<b>Dial:</b>	White aluminum		

Type	232.25		
Size	4½"	6"	
Connection	LBM		
Conn. Size	1/4" NPT	1/2" NPT	1/2" NPT
Press. Scale	PSI	PSI	PSI
30" Hg	4235470	4235721	4236220
30"-0-15 psi	4235488	4235739	4236238
30"-0-30 psi	4235496	4235747	4236246
30"-0-60 psi	4235509	4235755	4236254
30"-0-100 psi	4235517	4235763	4236262
30"-0-160 psi	4235525	4235771	4236271
30"-0-200 psi	4235533	4235780	4236280
15 psi	4235541	4235798	4236298
30 psi	4235551	4235801	4236301
60 psi	4235569	4235810	4236319
100 psi	4235577	4235828	4236327
160 psi	4235585	4235836	4236335
200 psi	4235593	4235844	4236343
300 psi	4235606	4235852	4236351
400 psi	4235614	4235861	4236361
600 psi	4235622	4235879	4236379
800 psi	4235631	4235887	4236387
1,000 psi	4235640	4235895	4236395
1,500 psi	4235658	4235909	4236408
2,000 psi	4235666	4235917	4236416
3,000 psi	4235674	4235925	4236424
5,000 psi	4235682	4235933	4236432
10,000 psi	4235691	4235941	4236441
15,000 psi	4235703	4235950	4236450
20,000 psi	4235711	4235968	4236468
Accessory order codes (installed at factory)			
Restrictor	+ R		

### Available Options

- Dampened movement
- Safety glass window
- Cleaned for oxygen service
- Special connections
- Instrument glass window

### Applications

- Pressure monitoring panels
- Suitable for corrosive gaseous or liquid media that will not clog the pressure system or attack 316L SS parts
- Process industry: chemical/petrochemical, power stations, mining, on and offshore, environmental technology, mechanical engineering and plant construction

### Abbreviations

LBM - Lower back mount  
SS - Stainless steel

Stock items shown in blue print

# Type 4XX.12

WIKA type 422.12 and 432.12 Sealgauges offer superior protection from viscous and crystallizing media. Type 422.12 features carbon steel wetted parts, while type 432.12 offers the corrosion protection of 316 SS wetted parts. Each model is supplied with a standard black cast iron case and standard 1/2" NPT female connection.

## Standard Features

<b>Size:</b>	4" & 6"	<b>Window:</b>	Flat instrument glass
<b>Case:</b>	Black-painted cast iron	<b>Dial:</b>	White aluminum
<b>Ring:</b>	Black-painted stainless steel	<b>Pointer:</b>	Black aluminum, adjustable
<b>Wetted Parts:</b>	(41x.12) carbon steel, stainless steel & Buna-N	<b>Accuracy:</b>	±1.5% of span
	(43x.12) SS & Buna-N	<b>Connection:</b>	Lower mount



MECHANICAL PRESSURE

## Overpressure Safety:

- Ranges ≤ 6 psi: 5 x full scale value
- Ranges > 6 psi: 3 x full scale value, max 600 psi protection

Type	422.12		432.12	
Size	4"	6"	4"	6"
<b>Connection</b>	LM			
<b>Conn. Size</b>	1/2" NPT Female			
<b>Press. Scale</b>	PSI	PSI	PSI	PSI
30" Hg			9736336	
30"-0-15 psi				
30"-0-30 psi			9740087	
30"-0-60 psi			9740095	
30"-0-100 psi			9744105	
30"-0-160 psi				
30"-0-200 psi				
10 psi	9744113			
15 psi			8683581	
30 psi	8558337		8558310	
60 psi	8681791		8683590	
100 psi	8558345		8657360	
160 psi			8683603	
200 psi	8681813		9744121	
300 psi			8547092	
400 psi			9697565	
600 psi	9744139		8681236	
5" H <sub>2</sub> O				
10" H <sub>2</sub> O				
15" H <sub>2</sub> O				
30" H <sub>2</sub> O				
60" H <sub>2</sub> O				
100" H <sub>2</sub> O				
200" H <sub>2</sub> O				

## Available Options

- Open flange connections
- Liquid-filled case design
- Special wetted materials
- Electrical alarm contacts

(Dry cases not field fillable)

## Applications

- With liquid-filled case for applications with high dynamic pressure pulsations or vibration
- Suitable for corrosive environments and gaseous or liquid media that will not obstruct the pressure system
- Process industry: chemical/petrochemical, power stations, mining, on and offshore, environmental technology, mechanical engineering and plant construction

## Abbreviations

LM - Lower mount  
SS - Stainless steel

Stock items shown in blue print

## Type 43X.50

WIKA type 432.50 Sealgauges feature all stainless steel construction and are built to withstand corrosive, highly viscous and crystallizing media. This Sealgauge is ideal for applications in harsh environments such as pulp and paper processing, chemical, petrochemical, and in water and sewage treatment plants.



Type 432.50 - dry case  
Type 433.50 - filled case

### Standard Features

<b>Size:</b>	4" & 6"	<b>Dial:</b>	White aluminum
<b>Case:</b>	304 SS	<b>Pointer:</b>	Black aluminum, adjustable
<b>Ring:</b>	304 SS	<b>Accuracy:</b>	±1.5% of span
<b>Wetted Parts:</b>	316L SS, Teflon®, Duratherm	<b>Connection:</b>	Lower mount
<b>Window:</b>	Safety glass		

### Overpressure Safety:

5 x full scale value, max 600 psi protection

Type	432.50 (Dry)		433.50 (Filled)	
Size	4"	6"	4"	6"
Connection	LM			
Conn. Size	1/2" NPT Female			
Press. Scale	PSI	PSI	PSI	PSI
30" Hg				
30"-0-15 psi				
30"-0-30 psi	9744147			
30"-0-60 psi	9744155			
30"-0-100 psi				
30"-0-160 psi	9744164			
30"-0-200 psi				
10 psi			8737134	
15 psi				
30 psi	8683360		9697603	
60 psi	8683379		8605548	
100 psi	8597952		8511950	
160 psi	8683387		8737118	
200 psi	9744172		8691320	
300 psi	8683409		8737126	
400 psi	9697581		8549176	
600 psi	9697599		8503370	
5" H <sub>2</sub> O				
10" H <sub>2</sub> O				
15" H <sub>2</sub> O				
30" H <sub>2</sub> O				
60" H <sub>2</sub> O				
100" H <sub>2</sub> O				

Stock items shown in blue print

### Available Options

- Open flange connections
- Case filling
- Special wetted materials
- Electrical alarm contacts
- Transmitters

(Dry cases not field fillable.)

### Applications

- With liquid-filled case for applications with high dynamic pressure pulsations or vibration
- Suitable in corrosive environments for gaseous, liquid or highly viscous media.
- Process industry: chemical/petrochemical, power stations, mining, on and offshore, environmental technology, mechanical engineering and plant construction

### Abbreviations

LM - Lower mount  
SS - Stainless steel

Mechanical Pressure > Low Pressure Gauges > A2G-10

## Type A2G-10

This low pressure differential pressure gauge is designed to measure dry, clean non-aggressive gases and air. This instrument is ideally suited to measure differential pressure in filtration systems, pressure monitoring for HVAC, air handlers and ventilation systems and for pressure monitoring of clean rooms, gas scrubbers and dust collection systems.



### Standard Features

<b>Size:</b>	4½"	<b>Pointer:</b>	Black aluminum
<b>Case:</b>	High-impact polycarbonate	<b>Accuracy:</b>	± 3% of span
<b>Wetted Parts:</b>	Silicone rubber, polycarbonate	<b>Connection:</b>	Lower or back mount
<b>Window:</b>	Polycarbonate	<b>Mounting:</b>	3 self-tapping mounting screws (standard)
<b>Dial:</b>	White aluminum		

Type	A2G-10	
<b>Size</b>	4½"	
<b>Conn. Size</b>	2 x 1/8" Hose Barb	
<b>Connection</b>	Lower	Back
<b>Mounting</b>	Surface Mount	Panel Mount
-0.1/+0.1 InWC	50677012	50676814
-0.2/+0.2 InWC	50677039	50676822
-0.5/+0.5 InWC	50677055	50676831
1/+1 InWC	50807132	50807099
-2/+2 InWC	50807145	50807102
-4/+4 InWC	50807153	50807111
-6/+6 InWC	50807161	50807129
0/0.25 InWC	50677063	50676857
0/0.4 InWC	50677098	50676865
0/0.5 InWC	50677080	50676873
0/1 InWC	50556673	50676881
0/2 InWC	50556681	50676890
0/3 InWC	50556690	50676903
0/4 InWC	50556703	40246582
0/5 InWC	50686178	50676911
0/6 InWC	50556738	40214583
0/8 InWC	50556746	50676920
0/10 InWC	50556754	50676938
0/12 InWC	40214605	50676946
0/15 InWC	50556762	40246604
0/20 InWC	50556771	50676954
0/25 InWC	50556789	50676962
0/30 InWC	50677101	50676971
0/40 InWC	50677110	50676989
0/50 InWC	50677128	50676997

### Available Options

- Other pressure units (Pa, kPa, mmWC, cmWC, mbar) available in equivalent ranges
- Custom artwork with custom logo - background colors available upon request
- Compression fitting adaptor

### Applications

- For dry, clean, non-aggressive gases, usually air
- Fan and blower monitoring
- Differential pressure monitoring in filters
- Overpressure monitoring in cleanrooms

Stock items shown in blue print

Mechanical Pressure > Low Pressure Gauges > A2G-15

## Type A2G-15

This low pressure differential pressure gauge is designed to measure dry, clean non-aggressive gases and air. This instrument is ideally suited to measure differential pressure in filtration systems, pressure monitoring for HVAC, air handlers and ventilation systems and for pressure monitoring of clean rooms, gas scrubbers and dust collection systems.



### Standard Features

<b>Size:</b>	4½"	<b>Pointer:</b>	Black aluminum
<b>Case:</b>	High-impact polycarbonate	<b>Accuracy:</b>	± 3% of span
<b>Wetted Parts:</b>	Silicone rubber, polycarbonate	<b>Connection:</b>	Lower or back mount
<b>Window:</b>	Polycarbonate	<b>Mounting:</b>	3 self-tapping mounting screws (standard)
<b>Dial:</b>	White aluminum		

Type	A2G-15			
<b>Size</b>	4½"			
<b>Conn. Size</b>	2 x G1/8 Female			
<b>Connection</b>	Lower		Back	
<b>Mounting</b>	Surface Mount		Panel Mount	
<b>Elec. Output Signal</b>	4 ... 20 mA 2-wire	0 ... 10 V 3-wire	4 ... 20 mA 2-wire	0 ... 10 V 3-wire
-0.1/+0.1 InWC	50693522	50693921	50692798	50693166
-0.2/+0.2 InWC	50693531	50693930	50692801	50693191
-0.5/+0.5 InWC	50693549	50693956	50692810	50693204
1/+1 InWC	50807366	50807412	50807218	50807251
-2/+2 InWC	50807374	50807447	50807226	50807277
-4/+4 InWC	50807382	50807463	50807234	50807293
-6/+6 InWC	50807391	50807471	50807242	50807307
0/0.25 InWC	50693557	50693964	50692828	50693212
0/0.4 InWC	50693565	50693972	50692836	50693221
0/0.5 InWC	50693573	50693999	50692844	50693239
0/1 InWC	50693581	50694006	50692852	50693247
0/2 InWC	50693590	50694022	50692861	50693255
0/3 InWC	50693603	50694031	50692879	50693271
0/4 InWC	50693611	50694049	50692887	50693280
0/5 InWC	50693620	50694057	50692895	50693298
0/6 InWC	50693638	50694065	50692909	50693301
0/8 InWC	50693646	50694090	50692917	50693310
0/10 InWC	50693794	50694103	50692925	50693336
0/12 InWC	50693808	50694120	50692933	50693344
0/15 InWC	50693816	50694146	50692941	50693361
0/20 InWC	50693841	50694154	50692950	50693379
0/25 InWC	50693859	50694162	50692968	50693387
0/30 InWC	50693867	50694171	50692976	50693395
0/40 InWC	50693875	50694189	50692984	50693409
0/50 InWC	50693883	50694197	50692992	50693417

### Available Options

- Other pressure units (Pa, kPa, mmWC, cmWC, mbar) available in equivalent ranges
- Custom artwork with custom logo - background colors available upon request
- Compression fitting adaptor

### Applications

- For dry, clean, non-aggressive gases, usually air
- Fan and blower monitoring
- Differential pressure monitoring in filters
- Overpressure monitoring in cleanrooms

Stock items shown in blue print

# Type 611.10

WIKA type 6X1.10 low pressure gauges are extremely sensitive and highly accurate. The capsule element pressure system is designed to measure pressure and vacuum of gaseous media from as low as 10" H<sub>2</sub>O to 275" H<sub>2</sub>O (10 psi). The finely polished nickel-silver pinion gear and shaft of the movement ensure repeatable accuracy.



MECHANICAL PRESSURE

## Standard Features

<b>Size:</b>	2½"	<b>Pointer:</b>	Black aluminum
<b>Case:</b>	Black-painted steel	<b>Accuracy:</b>	±1.5% of span
<b>Wetted Parts:</b>	Copper alloy		ASME B40.100 Grade B
<b>Window:</b>	Snap-in acrylic	<b>Connection:</b>	Lower or center back mount
<b>Dial:</b>	White aluminum		

Type		611.10	
<b>Size</b>		2½"	
<b>Connection</b>		LM	CBM
<b>Conn. Size</b>		1/4" NPT	
" H <sub>2</sub> O	mm H <sub>2</sub> O		
30 Vac	760	9852344	9851852
60 Vac	1500	9748321	9748339
100 Vac	2500	9747473	9747465
" H <sub>2</sub> O	mm H <sub>2</sub> O		
15	380	9851682	9851860
30	760	9851690	9855785
60	1500	9851704	9803432
100	2500	9851810	9851879
200	5000	9851828	9851887
oz./sq. in.	mm H <sub>2</sub> O		
10	440	9851771	
15	660	9851780	
20	880	9851798	
30	1320	9851747	9851917
35	1540	9851801	9857273
60	2640	9851755	9803548
oz./sq. in.	" H <sub>2</sub> O		
20	34	9851720	9857281
32	55	9851739	9855793
3 psi		9851925	9851836
5 psi		9851933	9851844
10 psi		4204212	4204221
Accessory order codes (installed at factory)			
Front flange, chrome		+ FF C	
Front flange, black		+ FF B	
Restrictor		+ R	

## Available Options

- Rear flange (2½" only)
- Vacuum and overpressure safety
- Instrument or safety glass window
- Cleaned for oxygen service
- Adjustable red min/max pointer on window
- Other connections
- 2" case size
- U-clamp panel mount option
- Restrictor
- Stainless steel case

## Applications

- Fluid medium, gaseous or dry, which does not clog connection port or corrode copper alloy

Example: low pressure pneumatic systems

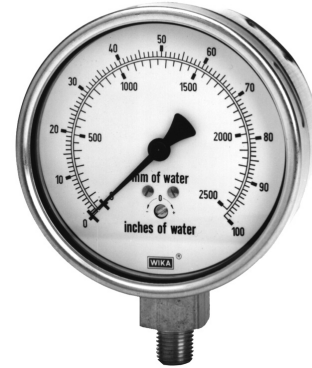
## Abbreviations

CBM - Center back mount  
 LM - Lower mount  
 SS - Stainless steel

Stock items shown in blue print

## Type 612.20

WIKA type 612.20 low pressure gauges feature a copper alloy capsule element that is designed to measure pressure and vacuum of gaseous media from as low as 2.5" H<sub>2</sub>O to 275" H<sub>2</sub>O (10 psi). The 4" dial size allows easy reading from a distance. The finely polished nickel-silver pinion gear and shaft of the movement ensure repeatable accuracy.



### Standard Features

<b>Size:</b>	4"	<b>Pointer:</b>	Black aluminum
<b>Case:</b>	304 SS	<b>Accuracy:</b>	±2/12% of span
<b>Wetted Parts:</b>	Copper alloy		ASME B40.100 Grade B
<b>Window:</b>	Instrument glass	<b>Connection:</b>	Lower mount
<b>Dial:</b>	White aluminum		

Type		612.20
<b>Size</b>		4"
<b>Connection</b>		LM
<b>Conn. Size</b>		1/4" NPT
" H <sub>2</sub> O	mm H <sub>2</sub> O	
30 Vac	760	9747724
60 Vac	1500	
100 Vac	2500	
" H <sub>2</sub> O	mm H <sub>2</sub> O	
15	380	9747732
30	760	9747740
60	1500	9747758
100	2500	9747766
200	5000	9747775
oz./sq. in.	mm H <sub>2</sub> O	
10	440	
15	660	
20	880	
30	1320	
35	1540	
60	2640	
oz./sq. in.	" H <sub>2</sub> O	
20	34	
32	55	
3 psi		9747783
5 psi		9747791
10 psi		4246684
Accessory order codes (installed at factory)		
Front flange, SS		+ FF S
Restrictor		+ R

### Available Options

- Rear flange
- Vacuum and over-pressure safety
- Acrylic or safety glass window
- Cleaned for oxygen service
- Adjustable red min/max pointer on window
- 2½" and 6" nominal case sizes
- Lower back mount connection
- Other connections
- Front flange
- U-clamp panel mount option
- Restrictor

### Applications

- Low pressure pneumatic systems
- Suitable for fluid medium, gaseous or dry that does not corrode copper alloy

### Abbreviations

LM - Lower mount  
SS - Stainless steel

Stock items shown in blue print

Mechanical Pressure > Low Pressure Gauges > 6X2.34

## Type 6X2.34

WIKA type 6X2.34 low pressure process gauges offer accurate readings in harsh ambient conditions. They are able to measure the pressure of gaseous media from as low as 10" H<sub>2</sub>O to 275" H<sub>2</sub>O (10 psi) or other equivalent units of pressure or vacuum. The finely polished nickel-silver pinion gear and shaft of the movement ensure repeatable accuracy.



### Standard Features

<b>Size:</b>	4½"	<b>Dial:</b>	White aluminum
<b>Case:</b>	Black thermoplastic	<b>Pointer:</b>	Black aluminum, adjustable
<b>Ring:</b>	Threaded thermoplastic	<b>Accuracy:</b>	±2/1/2% of span
<b>Wetted Parts:</b>	612.34 - copper alloy 632.34 - 316L SS	<b>Connection:</b>	ASME B40.100 Grade A Lower mount
<b>Window:</b>	Acrylic		

Type		612.34	632.34
<b>Size</b>		4½"	
<b>Connection</b>		LM	
<b>Conn. Size</b>		1/4" NPT	
<b>Outer Scale</b>	<b>Inner Scale</b>		
10 "H <sub>2</sub> O	6 oz./in <sup>2</sup>	4217063	<b>4217187</b>
15 "H <sub>2</sub> O	9 oz./in <sup>2</sup>	<b>4217071</b>	<b>4217195</b>
20 "H <sub>2</sub> O	12 oz./in <sup>2</sup>	4217080	4217209
30 "H <sub>2</sub> O	18 oz./in <sup>2</sup>	<b>4217098</b>	<b>4217217</b>
40 "H <sub>2</sub> O	24 oz./in <sup>2</sup>	4217101	4217225
60 "H <sub>2</sub> O	35 oz./in <sup>2</sup>	<b>4217110</b>	<b>4217233</b>
80 "H <sub>2</sub> O	45 oz./in <sup>2</sup>	4217128	4217241
100 "H <sub>2</sub> O	57 oz./in <sup>2</sup>	<b>4217136</b>	<b>4217250</b>
150 "H <sub>2</sub> O	90 oz./in <sup>2</sup>	<b>4217144</b>	4217268
5 psi	10 "Hg	<b>4217039</b>	<b>4217152</b>
8 psi	16 "Hg	4217047	4217161
10 psi	20 "Hg	4217055	4217179
Accessory order codes (installed at factory)			
4½" panel kit		+ PM	
Restrictor		+ R	

Stock items shown in **blue print**

### Available Options

- MoneI® wetted parts (Type 662.34)
- Vacuum or over-pressure safety
- Flat glass and safety glass window (not with case filling)
- Adjustable red min/max pointer on window
- Silicone case filling (633.34) (40" WC and up)
- Other connections
- Panel mount kit
- Restrictor

### Applications

- Where measurement of low pressures is needed
- Suitable for corrosive environments and gaseous or liquid media that will not obstruct the pressure system
- Process industry: chemical/petrochemical, power stations, mining, on and offshore, environmental technology, mechanical engineering and plant construction

### Abbreviations

LM - Lower mount  
SS - Stainless steel

## Type 632.50

WIKA type 632.50 low pressure gauges offer the corrosion resistance of 316 SS wetted parts and is able to measure pressure and vacuum of gaseous media from as low as 1" H<sub>2</sub>O to 275" H<sub>2</sub>O (10 psi). The finely polished nickel-silver pinion gear and shaft of the movement ensure repeatable accuracy.



### Standard Features

<b>Size:</b>	4"	<b>Pointer:</b>	Black aluminum
<b>Case:</b>	304 SS	<b>Accuracy:</b>	±2/1/2% of span
<b>Wetted Parts:</b>	316L SS		ASME B40.100 Grade B
<b>Window:</b>	Safety glass	<b>Connection:</b>	Lower mount
<b>Dial:</b>	White aluminum		

Type	632.50
<b>Size</b>	<b>4"</b>
<b>Connection</b>	LM
<b>Conn. Size</b>	1/2" NPT
5-0-5 "H <sub>2</sub> O	9804439
10-0-10 "H <sub>2</sub> O	<b>9804447</b>
15-0-15 "H <sub>2</sub> O	<b>9804455</b>
15 "H <sub>2</sub> O-0-5psi	9804412
15 "H <sub>2</sub> O	<b>9804323</b>
20 "H <sub>2</sub> O	9804471
30 "H <sub>2</sub> O	<b>9804315</b>
60 "H <sub>2</sub> O	<b>9804498</b>
100 "H <sub>2</sub> O	9859314
200 "H <sub>2</sub> O	9804501
5 psi	<b>9804307</b>
10 psi	<b>9804420</b>
Accessory order codes (installed)	
Front flange, SS	+ FF S
Restrictor	+ R

Stock items shown in blue print

### Available Options

- Rear flange
- Vacuum and overpressure safety
- Inductive alarm contacts
- Cleaned for oxygen service
- Adjustable red min/max pointer on window
- Silicone case filling (40" WC and up)
- Other connections
- Lower back mount connection
- 2½" and 6" nominal case size
- Front flange

### Applications

- Robust design and weather protection, suitable for outdoor use
- Suitable for dry, gaseous media that will not attack 316 SS parts
- Process industry: chemical/petrochemical, power stations, mining, on and offshore, environmental technology, mechanical engineering and plant construction

### Abbreviations

LM - Lower mount  
 SS - Stainless steel  
 LBM - Lower back mount

## Type 700.04

This piston-style differential pressure gauge is designed for use with clean liquid or gaseous media where high differential pressure/static process pressures are required. Type 700.04 is suitable for measuring pressure drops across a variety of devices, including filters, strainers, separators and heat exchangers.



### Standard Features

<b>Size:</b>	2½" & 4½"	<b>Window:</b>	Acrylic
<b>Case:</b>	Black thermoplastic	<b>Dial:</b>	White aluminum
<b>Wetted Parts:</b>	Ceramic magnet, 316 SS spring, Viton® O-rings, sensor housing (see table)	<b>Pointer:</b>	Black aluminum
		<b>Accuracy:</b>	±2% of span (ascending pressure only)
		<b>Connection:</b>	Back mount

**6000 psig Max. Safe Working Pressure**

Type	700.04			
Size	2½"	4"	2½"	4"
Conn. Size	2 x 1/4" NPT Female, Back			
Sensor Housing	Black-anodized aluminum		316L SS	
5 psid	4390954	4390632	4390675	50334085
10 psid	<b>4375242</b>	4371866	4368084	4372170
20 psid	5375250	4368092	4371816	4372188
25 psid	<b>4375268</b>	4371883	4371824	4272196
30 psid	4390616	4390658	4390691	4390739
50 psid	4375276	4371891	4371832	4272209
60 psid	50420267	4390666		50441647
75 psid	4375285	4371905	4371840	43722147
100 psid	4372933	4371913	4371858	4372162
Accessory order codes (installed at factory)				
Safety glass	+ SG			
Wall/pipe mount kit	+ MKIT			
Drag pointer	+ DP			
Glycerine fill	Type 703.04			

Stock items shown in **blue** print

### Available Options

- ½" NPT female with adaptors (#203963)
- In-line connections (side/end connection)
- Bi-directional reading
- Reversed pressure ports: high (+) on left, low (-) on right (facing gauge)
- Buna-N or EPDM O-rings
- Reed switch with flying leads (SPST and SPDT)
- Wall / pipe - mounting brackets
- Safety glass window

### Applications

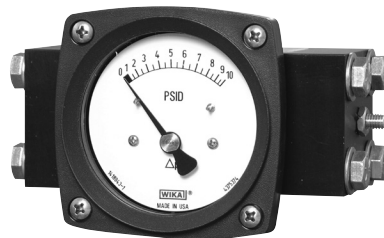
- For use in measurement applications requiring high differential/static process pressures
- Suitable for measuring pressure drops across filters, strainers, separators, etc.

### Abbreviations

SPDT - Single pole, double throw  
 SPST - Single pole, single throw  
 SS - Stainless steel

## Type 700.05

This diaphragm-style differential pressure gauge is suited for use in applications requiring low/medium differential and medium/high process pressure media. Type 700.05 is intended for measuring pressure drops across filters, strainers, separators, heat exchangers and gas recovery systems.



### Standard Features

<b>Size:</b>	2½" & 4½"	<b>Dial:</b>	White aluminum
<b>Case:</b>	Black thermoplastic	<b>Pointer:</b>	Black aluminum
<b>Wetted Parts:</b>	Ceramic magnet, 316 SS spring, Buna-N O-rings, sensor housing (see table)	<b>Accuracy:</b>	±2% of span
<b>Window:</b>	Acrylic	<b>Connection:</b>	Back mount

**3000 psig Max. Safe Working Pressure**

Type	700.05			
Size	2½"	4"	2½"	4"
<b>Conn. Size</b>	2 x 1/4" NPT Female, Back			
<b>Sensor Housing</b>	Black-anodized aluminum		316L SS	
0/50 "H <sub>2</sub> O	4375306	4375446	4375586	4375722
0/75 "H <sub>2</sub> O	4375315	4375455	4375595	4375730
0/100 "H <sub>2</sub> O	4375323	4375463	4375608	4375748
0/200 "H <sub>2</sub> O	4375331	4375471	4375616	4375756
0/300 "H <sub>2</sub> O	4375349	4375489	4375625	4375765
0/400 "H <sub>2</sub> O	4375357	4375497	4375633	4375773
0/5 psid	4375366	4375501	4375641	4375781
0/10 psid	4375374	4375519	4375659	4375799
0/15 psid	4375382	4375527	4375667	4375803
0/25 psid	4375390	4375536	4375676	4375811
0/30 psid	4375404	4375544	4375684	4375829
0/50 psid	4375412	4375552	4375692	4375837
0/75 psid	4375420	4375560	4375706	4375846
0/100 psid	4375438	4375578	4375714	4375854
Accessory order codes (installed at factory)				
Safety glass	+ SG			
Wall/Pipe mount kit	+ MKIT			
Drag pointer	+ DP			
Glycerine fill	Type 703.05			

### Available Options

- ½" NPT female with adaptors (#203963)
- ¼" NPT female top and bottom mount
- Safety glass window
- Case filling - glycerine or silicone
- Viton® membrane and O-rings
- Wall / pipe - mounting brackets

### Applications

- For use in measurement applications requiring high differential/static process pressures
- Suitable for applications with particulate matter present in liquid/gas media or when separation of the media is required

### Abbreviations

SS - Stainless steel

Stock items shown in blue print

Mechanical Pressure > Differential Pressure Gauges > 712.15

## Type 712.15

WIKA's type 712.15 differential pressure "Cryo Gauge" is designed for liquid level measurement in particular for the cryogenic industry.

### Standard Features

**Size:** 6"  
**Case:** 304 SS with polished SS front flange  
**Wetted Parts:** Copper alloy measuring cell with 316L compression springs and NBR separating diaphragm

**Window:** Polycarbonate  
**Dial:** White aluminum  
**Pointer:** Black aluminum  
**Accuracy:** ±2.5% of span  
**Connection:** Lower mount



750 psig max. working pressure

Type	712.15
<b>Size</b>	6"
<b>Connection</b>	LM
<b>Conn. Size</b>	2 x 1/4" NPT Female
<b>Mounting</b>	Panel Mount
0/50"WC	50696246
0/100"WC	50696262
0/150"WC	50696271
0/200"WC	50696289
0/250"WC	50696297
0/300"WC	50696301
0/350"WC	50696319
0/400"WC	50696327
0/450"WC	50696335
0/500"WC	50696343
0/600"WC	50696351
0/700"WC	50696360
0/800"WC	50696378
0/900"WC	50696386
Accessory order codes	
Safety glass window	SG
Universal wall-/pipe mount kit	MKIT
"H"- mounting bracket	H-BRKT
"C"- mounting bracket	C-BRKT

### Available Options

- 3-way manifold w/integrated working pressure gauge
- Magnetic or inductive alarm contacts
- Single and dual Reed switches
- 4-20 mA transmitter output
- Variety of mounting devices
- 316 SS wetted parts (712.16)
- 4" nominal case size

### Applications

- Level measurement in closed tanks, particularly in cryotechnology
- Filter monitoring
- Monitoring and control of pumps
- For gaseous and liquid media that are not highly viscous and have no suspended solids

### Abbreviations

LM - Lower mount  
 SS - Stainless steel

Stock items shown in **blue print**

# DIFFERENTIAL PRESSURE GAUGES

Mechanical Pressure > Differential Pressure Gauges > 712.25DP

## Type 712.25DP

Type 712.25DP 4½" and 6" gauges feature a tough black-painted aluminum case with brass wetted parts. They feature a dual Bourdon tube system and a special subtracting movement drives one pointer to display the differential pressure. The built-in rear flange matches up to existing mounting holes without any modifications. These gauges are suitable for all gaseous and liquid media that will not obstruct pressure systems or attack copper alloy parts.



### Standard Features

<b>Size:</b>	4½" & 6"	<b>Dial:</b>	White aluminum
<b>Case:</b>	Black epoxy-coated aluminum	<b>Pointer:</b>	Black aluminum
<b>Ring:</b>	Black epoxy-coated aluminum	<b>Accuracy:</b>	±2/1/2% of span
<b>Wetted Parts:</b>	Copper alloy		ASME B40.100 Grade A
<b>Window:</b>	Instrument glass	<b>Connection:</b>	Lower mount

Type		712.25DP	
Size		4½"	6"
Connection		LM	
Conn. Size		2 x 1/4" NPT	
Diff. Range	Max. Static Press.		
15 psid	15 psig		
30 psid	30 psig	4241487	4241819
60 psid	60 psig	4241495	4241827
100 psid	100 psig	4241509	4241835
160 psid	160 psig	4241715	4241843
200 psid	200 psig	4241585	4241851
300 psid	300 psig		
400 psid	400 psig	4241541	4241879
600 psid	600 psig		
800 psid	800 psig		
1000 psid	1000 psig	4241568	4241895
15/0/15 psid	30 psig		
30/0/30 psid	60 psig		
50/0/50 psid	100 psig		
100/0/100 psid	200 psig		
150/0/150 psid	300 psig		
200/0/200 psid	400 psig		
400/0/400 psid	800 psig		
500/0/500 psid	1000 psig		
Accessory order codes (installed at factory)			
Restrictor		+ R	

### Available Options

- Restrictor

### Applications

- Measurement of pressure differential of two applied pressures
- Suitable for all gaseous and liquid media that will not obstruct the pressure system or attack copper alloy parts

### Abbreviations

LM - Lower mount  
SS - Stainless steel

Stock items shown in blue print

Mechanical Pressure > Differential Pressure Gauges > 712.25DX

## Type 712.25DX

Type 712.25DX 4½" and 6" gauges feature a tough black-painted aluminum case with brass wetted parts. Type 712.25DX gauges feature two independent pressure systems and a special movement drives one red pointer and one black pointer to display two pressure readings on the dial. The built-in rear flange matches up to existing mounting holes without any modifications. The 712.25DX is suitable for all gaseous and liquid media that will not obstruct the pressure system or attack copper alloy parts.



### Standard Features

<b>Size:</b>	4½" & 6"	<b>Dial:</b>	White aluminum
<b>Case:</b>	Black epoxy-coated aluminum	<b>Pointer:</b>	Black aluminum
<b>Ring:</b>	Black epoxy-coated aluminum	<b>Accuracy:</b>	±2/1/2% of span ASME B40.100 Grade A
<b>Wetted Parts:</b>	Copper alloy	<b>Connection:</b>	Lower mount
<b>Window:</b>	Instrument glass		

Type		712.25DX	
Size		4½"	6"
Conn. Size		2 x 1/4" NPT	
Diff. Range	Max Static		
15 psi	19 psi	4241657	4241738
30 psi	39 psi	4241665	4241746
60 psi	78 psi	4241673	4241754
100 psi	130 psi	4241681	4241762
160 psi	208 psi		
200 psi	260 psi		
300 psi	390 psi	4241690	4241771
400 psi	520 psi		
600 psi	780 psi		
800 psi	1,040 psi		
1,000 psi	1,300 psi	4241720	4241801
Accessory order codes (installed at factory)			
Restrictor		+ R	

### Available Options

- Restrictor

### Applications

- Measurement and indication of two applied pressures
- Suitable for all gaseous and liquid media that will not obstruct the pressure system or attack copper alloy parts

### Abbreviations

LM - Lower mount  
SS - Stainless steel

Stock items shown in blue print.

# DIFFERENTIAL PRESSURE GAUGES

Mechanical Pressure > Differential Pressure Gauges > 732.25

## Type 732.25

This opposed membrane/liquid-filled sensor element differential pressure gauge is for applications requiring high differential/high process pressures. The 732.25 is used in a variety of industrial uses, including rotating equipment systems and/or corrosive environments in liquid or gaseous media.



### Standard Features

<b>Size:</b>	4½" & 6"	<b>Window:</b>	Acrylic
<b>Case:</b>	Black epoxy-coated aluminum	<b>Dial:</b>	White aluminum
<b>Ring:</b>	Polished SS	<b>Pointer:</b>	Black aluminum
<b>Wetted Parts:</b>	316L SS sensor housing, Monel® membrane, and PTFE O-ring	<b>Accuracy:</b>	±1% of span ASME B40.100 Grade 1A
		<b>Connection:</b>	Back mount

Type	732.25	
Size	4½"	6"
<b>Conn. Size</b>	2 x 1/4" NPT Female, Back	
100 "H <sub>2</sub> Od		
150 "H <sub>2</sub> Od		
200 "H <sub>2</sub> Od		
300 "H <sub>2</sub> Od		
400 "H <sub>2</sub> Od		
15 psid	4375862	4275926
30 psid	4275870	4375935
60 psid	4375888	4375943
100 psid	4375896	4375951
230 psid	4375900	4375969
300 psid	4375918	4375977
400 psid		
500 psid		
600 psid		
Accessory order codes (installed at factory)		
Safety glass window	+ SG	
Glycerine fill	Type 733.25	

### Available Options

- Case filling
- Top and bottom connection
- Wall/pipe mounting kit (only available in connection with top / bottom mount)
- ½" NPT female adaptors (#203963)
- 304 SS case material
- Dial for flow applications (square root)

### Applications

- For use in measurement applications requiring high differential / static process pressures
- For corrosive environments with either liquid or gaseous media

### Abbreviations

LM - Lower mount  
SS - Stainless steel

Stock items shown in blue print.

Mechanical Pressure > Differential Pressure Gauges > 732.26

## Type 732.26

This opposed membrane/liquid-filled sensor element differential pressure gauge is for applications requiring low differential/medium static process pressures. The 732.26 is typically used for a variety of industrial uses, including cryogenic gases and/or corrosive environments in liquid or gaseous media.



### Standard Features

<b>Size:</b>	4½" & 6"	<b>Window:</b>	Acrylic
<b>Case:</b>	Black epoxy-coated aluminum	<b>Dial:</b>	White aluminum
<b>Ring:</b>	Polished SS	<b>Pointer:</b>	Black aluminum
<b>Wetted Parts:</b>	316L SS sensor housing, 316 SS membrane, and PTFE O-ring	<b>Accuracy:</b>	±1% of span ASME B40.100 Grade 1A
<b>Dial:</b>	White aluminum with black lettering	<b>Connection:</b>	Top/bottom mount

**600 psig Max. Safe Working Pressure**

**Cleaned for oxygen service,  
with "USE NO OIL" on dial**

Type	732.26	
Size	4½"	6"
<b>Conn. Size</b>	2 x 1/4" NPT Female, Top/Btm	
100 "H <sub>2</sub> O <sub>d</sub>	4375986	<b>4374246</b>
150 "H <sub>2</sub> O <sub>d</sub>	4375994	4376036
200 "H <sub>2</sub> O <sub>d</sub>	4376001	4376044
300 "H <sub>2</sub> O <sub>d</sub>	4376019	4376052
400 "H <sub>2</sub> O <sub>d</sub>	4376027	4376060
15 psid		
30 psid		
60 psid		
100 psid		
230 psid		
300 psid		
400 psid		
500 psid		
Accessory order codes (installed at factory)		
Safety glass window	+ SG	

### Available Options

- Case filling Halocarbon® (only for O<sub>2</sub> service); other case fillings (glycerine or silicone oil) are available, but not for O<sub>2</sub> service (without \* use no oil\* on dial)
- Wall/pipe mounting kit
- C-bracket mounting kit (#2353275)
- H-bracket mounting kit (#2398784)
- Special dials for liquid level measurement
- ½" NPT female adaptors (#203963)
- 304 SS case material
- Safety glass window

### Applications

- For measurement in applications requiring low to medium differential and / or static process pressures
- For cryogenic gases or corrosive environments with either liquid or gaseous media

Stock items shown in **blue** print.

## Type 312.20

Extremely sensitive and highly accurate, WIKA type 312.20 test gauges are excellent for instrument shops, gauge repair and calibration shops, testing laboratories and other applications demanding high precision and consistent results. Type 312.20 test gauges feature adjustable knife-edge pointers and mirror bands on the dial to assure precise readings and to eliminate parallax error.



### Standard Features

<b>Size:</b>	6"	<b>Pointer:</b>	Black aluminum, adjustable knife-edge
<b>Case:</b>	304 SS	<b>Movement:</b>	Brass with nickel-silver pinion gears and shaft
<b>Ring:</b>	Polished stainless steel	<b>Accuracy:</b>	±0.25% of span ASME B40.100 Grade 3A
<b>Wetted Parts:</b>	Copper alloy	<b>Connection:</b>	Lower mount
<b>Window:</b>	Safety glass		
<b>Dial:</b>	White aluminum, with mirrored band		

### Available Options

- Front flange, stainless steel
- Rear flange, stainless steel
- Cleaned for oxygen service
- Special connections

### Applications

- Calibration and testing laboratories
- Suitable for gaseous or liquid media that will not obstruct the pressure system or corrode copper alloy wetted parts

Type	312.20	
<b>Size</b>	<b>6"</b>	
<b>Connection</b>	LM	
<b>Conn. Size</b>	1/4" NPT	1/2" NPT
<b>Press. Scale</b>	PSI	PSI
30" Hg	9746859	9747163
30"-0-15 psi		
30"-0-30 psi		
30"-0-60 psi		
30"-0-100 psi		
30"-0-160 psi		
30"-0-200 psi	9651454	
15 psi	9746867	9747171
30 psi	<b>9746875</b>	9747189
60 psi	9746884	9747197
100 psi	<b>9746892</b>	9747201
160 psi	9746905	9747219
200 psi	<b>9746914</b>	9747227
300 psi	<b>9746922</b>	9747235
400 psi	9746930	9747244
600 psi	9746948	<b>9747252</b>
800 psi	9746956	9747260
1,000 psi	<b>9746965</b>	9747278
1,500 psi	9746973	9747286
2,000 psi	9746981	9747295
3,000 psi	<b>9746999</b>	9747308
5,000 psi	<b>9747006</b>	9747316
10,000 psi	9747015	9747325
Accessory order codes (installed at factory)		
Front flange, SS	+ FF	
Rear flange, SS	+ RF	
Restrictor	+ R	

### Abbreviations

LM - Lower mount  
SS - Stainless steel

Stock items shown in blue print.

Mechanical Pressure > High Precision Gauges > 332.30

## Type 332.30

Type 332.30 test gauges feature a solid front, blow-out back safety case design and adjustable knife-edge pointers. The mirror bands on the dial assure precise readings and eliminate parallax error. Extremely sensitive and highly accurate, WIKA type 332.30 test gauges are excellent for instrument shops, gauge repair and calibration shops, testing laboratories and other applications demanding high precision and consistent results.



### Standard Features

<b>Size:</b>	6"	<b>Pointer:</b>	Black aluminum, adjustable knife-edge
<b>Case:</b>	304 SS, solid-front	<b>Movement:</b>	Stainless steel
<b>Ring:</b>	Polished stainless steel	<b>Accuracy:</b>	±0.25% of span
<b>Wetted Parts:</b>	316L SS	<b>Connection:</b>	ASME B40.100 Grade 3A
<b>Window:</b>	Safety glass		
<b>Dial:</b>	White aluminum, with mirrored band		

Type	332.30
<b>Size</b>	<b>6"</b>
<b>Connection</b>	LM
<b>Conn. Size</b>	1/2" NPT
<b>Press. Scale</b>	PSI
30" Hg	50719092
30"-0-15 psi	
30"-0-30 psi	
30"-0-60 psi	
30"-0-100 psi	
30"-0-160 psi	
30"-0-200 psi	
15 psi	
30 psi	
60 psi	
100 psi	4207408
160 psi	4277416
200 psi	50407848
300 psi	4248946
400 psi	50046128
600 psi	4286112
800 psi	
1,000 psi	50179691
1,500 psi	50046136
2,000 psi	
3,000 psi	4282559
5,000 psi	9744309
10,000 psi	
Accessory order codes (installed)	
Front flange, SS	+ FF
Restrictor	+ R

### Available Options

- Front flange, stainless steel
- Rear flange, stainless steel
- Cleaned for oxygen service
- Special connections

### Applications

- Calibration and testing laboratories
- Suitable for gaseous or liquid media that will not obstruct the pressure system or corrode stainless steel wetted parts

### Abbreviations

LM - Lower mount  
SS - Stainless steel

Stock items shown in **blue** print.

## Type 332.54

WIKA type 332.54 inspector's test gauges are convenient for field calibrations. They have an accuracy of  $\pm 0.25\%$  which meets ASME B40.100 Grade 3A. The mirrored band on the dial and the knife-edge pointer make it easy to take accurate readings from the gauge. Type 332.54 test gauges are supplied standard with a padded, nylon carrying pouch.



### Standard Features

<b>Size:</b>	4"	<b>Pointer:</b>	Black aluminum, adjustable knife-edge
<b>Case:</b>	304 SS	<b>Movement:</b>	Stainless steel
<b>Ring:</b>	Polished stainless steel	<b>Accuracy:</b>	$\pm 0.25\%$ of span (ASME B40.1 Grade 3A) 0/30" Hg to 600 psi and 2,000 psi to 20,000 psi; $\pm 0.5\%$ of span (ASME B40.1 Grade 2A) 600>2,000 psi
<b>Wetted Parts:</b>	316L SS	<b>Connection:</b>	Lower mount
<b>Window:</b>	Safety glass		
<b>Dial:</b>	White aluminum, with mirrored band		

Type	332.54
<b>Size</b>	<b>4"</b>
<b>Connection</b>	LM
<b>Conn. Size</b>	1/4" NPT
<b>Press. Scale</b>	PSI
30" Hg	<b>4220013</b>
30"-0-15 psi	4362336
30"-0-30 psi	4255232
30"-0-60 psi	4333781
30"-0-100 psi	4237961
30"-0-160 psi	4213176
30"-0-200 psi	4200741
15 psi	<b>4220021</b>
30 psi	4220030
60 psi	<b>4220048</b>
100 psi	<b>4220056</b>
160 psi	<b>4220064</b>
200 psi	<b>4220072</b>
300 psi	<b>4220081</b>
400 psi	4220099
600 psi	<b>4220102</b>
800 psi	
1,000 psi	<b>4220111</b>
1,500 psi	4246004
2,000 psi	4249250
3,000 psi	4237979
5,000 psi	4243269
10,000 psi	50044796
Accessory order codes (installed)	
Rear flange, SS	+ RF
Restrictor	+ R

### Available Options

- Special connections
- Instrument glass window
- Cleaned for oxygen service

### Applications

- Inspector's test gauge
- Testing and calibration of other pressure measuring instruments
- Suitable for fluid medium which does not clog port or corrode 316 SS

**Abbreviations**  
LM - Lower mount  
SS - Stainless steel

Stock items shown in blue print.

## Type 332.34

The type 332.34 is an industrial type gauge suitable for corrosive environments where the fluid medium will not clog the connection or corrode 316 SS material. Solid front, blow-out back case design meets safety requirements of ASME B40.100.



### Standard Features

<b>Size:</b>	4½"	<b>Pointer:</b>	Black aluminum, adjustable knife-edge
<b>Case:</b>	Black Pocan®	<b>Movement:</b>	Stainless steel
<b>Ring:</b>	Black Pocan®	<b>Accuracy:</b>	±0.25% of span (ASME B40.1 Grade 3A) 0/30" Hg to 600 psi and 2,000 psi to 20,000 psi; ±0.5% of span (ASME B40.1 Grade 2A) 600>2,000 psi
<b>Wetted Parts:</b>	316L SS	<b>Connection:</b>	Lower mount
<b>Window:</b>	Acrylic		
<b>Dial:</b>	White aluminum, with mirrored band		

Type	332.34
<b>Size</b>	<b>4½"</b>
<b>Connection</b>	LM
<b>Conn. Size</b>	1/2" NPT
<b>Press. Scale</b>	PSI
30" Hg	4334711
30"-0-15 psi	4334729
30"-0-30 psi	
30"-0-60 psi	
30"-0-100 psi	
30"-0-160 psi	4334761
30"-0-200 psi	
15 psi	4334770
30 psi	4334788
60 psi	4334796
100 psi	4334800
160 psi	4334818
200 psi	4334826
300 psi	4334834
400 psi	4334842
600 psi	4334851
800 psi	4364398
1,000 psi	50005456
1,500 psi	50058649
2,000 psi	4394506
3,000 psi	4200627
5,000 psi	50008880
10,000 psi	4200792
15,000 psi	
20,000 psi	
Accessory order codes (installed)	
4½" Panel kit	+ PM
Restrictor	+ R

### Available Options

- Cleaned for oxygen service
- Instrument glass
- Panel mount kit
- Safety glass
- Special connection

### Applications

- Industrial
- Suitable for corrosive environments where the fluid medium will not clog the connection or corrode the wetted part materials.

### Abbreviations

LM - Lower mount  
SS - Stainless steel

Stock items shown in **blue print**.

## Type 332.34DD

WIKA type 332.34DD direct drive test gauge features a direct drive, movementless pressure system. With a shock absorbing Bourdon tube design, these gauges are an effective means for guarding against severe shock and vibration applications that require test gauge accuracy. The 332.34DD is manufactured in a standard black 4½” process gauge style case and comes standard completely equipped with an external zero adjustment and a high 0.25% full scale accuracy.



### Standard Features

<b>Size:</b>	4½”	<b>Pointer:</b>	Black aluminum, adjustable knife edge
<b>Case:</b>	Black thermoplastic, solid front	<b>Accuracy:</b>	± 0.25% of span
<b>Ring:</b>	Stainless steel	<b>Connection:</b>	ASME B40.100 Grade 3A
<b>Wetted Parts:</b>	X-750 Inconel® / 316 SS	<b>Restrictor:</b>	Standard
<b>Window:</b>	Polycarbonate		
<b>Dial:</b>	White aluminum, mirror band		

Type	332.34DD
<b>Size</b>	<b>4½”</b>
<b>Conn. Size</b>	1/2” NPT
<b>Press. Scale</b>	PSI
-30” to 30 psi	52049418
-30” to 60 psi	52049426
-30” to 150 psi	52049434
-30” to 300 psi	52049442
30 psi	52049451
60 psi	52049469
100 psi	52049477
160 psi	52049485
200 psi	52049493
300 psi	52049507
500 psi	52049515
1,000 psi	52049523
1,500 psi	52049531
2,000 psi	52049540
3,000 psi	52049558
5,000 psi	52049566
10,000 psi	52049574

### Available Options

- Cleaned for use in oxygen service
- Special connection

**Abbreviations**  
 LM - Lower mount  
 SS - Stainless steel

Stock items shown in blue print

Mechanical Pressure > High Precision Gauges > 332.25 / 312.25

## Type 332.25 / 312.25

WIKA type 332.25 test gauges have a glass covered hinged ring front with securing screws as standard. The adjustable knife edge pointer is easily accessed under the hinged ring front. Designed for panel mounting, the type 332.25 gauge features 316 SS wetted parts and a one-piece aluminum solid-front safety case design. Well suited for installations in process panel and control applications, type 332.25 gauges meet ASME Grade 3A accuracy standards.



### Standard Features

<b>Size:</b>	4½"	<b>Pointer:</b>	Black aluminum, adjustable knife-edge
<b>Case:</b>	Black-painted aluminum	<b>Movement:</b>	Stainless steel
<b>Ring:</b>	Black-painted aluminum	<b>Accuracy:</b>	±0.25% of span (ASME B40.1 Grade 3A) 0/30" Hg to 600 psi and 2,000 psi to 20,000 psi; ±0.5% of span (ASME B40.1 Grade 2A) 600>2,000 psi
<b>Wetted Parts:</b>	316L SS	<b>Connection:</b>	Lower back mount
<b>Window:</b>	Flat instrument glass		
<b>Dial:</b>	White aluminum, with mirrored band		

Type	332.25	
<b>Size</b>	4½"	
<b>Connection</b>	LBM	
<b>Conn. Size</b>	1/4" NPT	1/2" NPT
<b>Press. Scale</b>	PSI	PSI
30" Hg	50675567	50675818
30"-0-15 psi	50663003	50675826
30"-0-30 psi	50675583	50675834
30"-0-60 psi	50675591	50675842
30"-0-100 psi	50675605	50675851
30"-0-160 psi	50675613	50675869
30"-0-200 psi	50675621	50675877
15 psi	50675621	50675885
30 psi	50675648	50675893
60 psi	50675656	50675907
100 psi	50675664	50675915
160 psi	50663011	50675923
200 psi	50663020	50675931
300 psi	50675699	50675940
400 psi	50663038	50675958
600 psi	50663046	50675966
800 psi	50675729	50675974
1,000 psi	50675737	50675982
1,500 psi	50675745	50675991
2,000 psi	50675753	50676008
3,000 psi	50675761	50676016
5,000 psi	50675770	50676024
10,000 psi	50675788	50676032
15,000 psi	50675796	50676041
20,000 psi	50675800	50676059
Accessory order codes (installed)		
Restrictor	+ R	

### Available Options

- Copper alloy wetted parts (Type 312.25)
- Cleaned for oxygen service
- Special connections

### Applications

- Instrument shops
- Precision panel installations
- Test benches
- Calibration laboratories

### Abbreviations

LBM - Lower back mount  
SS - Stainless steel

Stock items shown in blue print.

## Type 342.11

WIKA type 342.11 precision test gauges are high quality, time-proven instruments designed for applications requiring exceptional precision and high reliability in the measurement of pressure. WIKA precision test gauges feature a Bourdon tube made of Ni-Span C® for all pressure ranges above 0-10 psi. Ni-Span C® has exceptional temperature stability and eliminates the need for an expensive thermal compensator.



### Standard Features

<b>Size:</b>	10"	<b>Dial:</b>	White aluminum, with mirrored band
<b>Case:</b>	Grey-painted cast aluminum	<b>Pointer:</b>	Black aluminum, knife-edge
<b>Ring:</b>	Grey-painted cast aluminum	<b>Movement:</b>	Stainless steel
<b>Wetted Parts:</b>	Ni-Span C®	<b>Accuracy:</b>	±0.1% of span ASME B40.100 Grade 4A
<b>Window:</b>	Acrylic, non-reflecting	<b>Connection:</b>	Lower mount

Type	342.11
<b>Size</b>	<b>10"</b>
<b>Connection</b>	LM
<b>Conn. Size</b>	1/4" NPT Female
<b>Press. Scale</b>	PSI
30" Hg	9328750
30"-0-15 psi	9328769
30"-0-30 psi	9328777
30"-0-60 psi	9328785
30"-0-100 psi	9328793
30"-0-150 psi	8988927
30"-0-200 psi	
30"-0-300 psi	
15 psi	9328823
30 psi	9328831
60 psi	9328840
100 psi	9328858
160 psi	9328866
200 psi	9328874
300 psi	9328882
400 psi	9328890
600 psi	9328904
800 psi	8988854
1,000 psi	9328920
1,500 psi	9328939
2,000 psi	9328947
3,000 psi	9328955
5,000 psi	
10,000 psi	
15,000 psi	9328998
20,000 psi	9329005
300" H <sub>2</sub> O	8590931
400" H <sub>2</sub> O	
600" H <sub>2</sub> O	
1,000" H <sub>2</sub> O	

### Available Options

- Cleaned for oxygen service (up to 6,000 psi)
- Special connections including autoclave

### Applications

- Pressure gauge for testing, calibration and laboratory measurement
- Fluid medium does not clog port or corrode Ni-Span C® and stainless steel

#### Notes:

All Type 342.11 gauges are supplied with a NIST Certificate of Calibration.

#### Abbreviations

LM - Lower mount  
SS - Stainless steel

Stock items shown in **blue** print.

Mechanical Pressure > Calibration Equipment > CPH6600

# CPH6600

WIKA's CPH6600 is a small, lightweight hand-held calibrator that generates pressures up to 300 psi using a high-performance integral electric pump.

The CPH6600 provides  $\pm 0.025\%$  FS accuracy on its internal, isolated pressure sensor. Temperature compensation on its internal sensor ensures accuracy in field applications.

## Standard Features

- Integrated electric pump (ranges 30 psi, 150 psi, 300 psi)
- Supplied certified to NIST 0.025% accuracy
- Simultaneous display of pressure, temperature and mA output
- 24V loop power for device under test

## Applications

- Calibration of natural gas custody transfer sites
- Field calibration verification on transmitters
- Switch set point setting



MECHANICAL PRESSURE

Type	Range	Part Number
CPH6600	-28" Hg to 30 psi	50846442
	-28" Hg to 150 psi	50846451
	-28" Hg to 300 psi	50846477

Stock items shown in **blue** print.


Mechanical Pressure > Calibration Equipment > CPG 1000

## Type CPG 1000

The CPG 1000 digital pressure test gauge takes the concept of an analog test gauge and brings it to a new level. The CPG 1000 combines the accuracy of digital technology with the simplicity of an analog test gauge and achieves performance, ease-of-use and a feature set unmatched in the pressure measurement world.



### Standard Features

- Accuracy of (+/-) 0.05% full scale
- Stainless steel case meets NEMA 4, IP65
- Min/max recall
- 18 selectable engineering units,
- 1 user customized unit
- Adjustable tare
-  Class 1, Div. 2, Groups A, B, C, and T6
- Available with optional 24 V external power input
- Rubber boot standard on LM version only

Type	CPG 1000				
Size	4"				
Conn. Size	1/4" NPT				
Configuration	Lower Mount	Lower Back Mount	LM w/ Opt. 24 V Ext. Power	LBM Style w/ Opt. 24 V Ext. Power	Kit w/ Pump, Test Hose & Case
10" W.C.	52189074	N/A	N/A	N/A	N/A
30" W.C.	50577930	50578367	50578529	50578669	N/A
-15-0-15 psi	50577964	50578405	50578553	50579304	50579428
-15-0-30 psi	50577972	50578421	50578561	50579312	50579436
15 psi	50577948	50578383	50578537	50579282	50579401
30 psi	50577956	50578391	50578545	50579291	50579410
100 psi	50577981	50578448	50578570	50579321	50579444
300 psi	50577999	50578456	50578596	50579339	50579452
500 psi	50578003	50578464	50578600	50579347	50579461
1,000 psi	50578014	50578472	50578618	50579355	50579479
2,000 psi	50578022	50578481	50578626	50579363	50579487
3,000 psi	50578341	50578499	50578634	50579371	50579509
5,000 psi	50578359	50578502	50578642	50579380	50579517
10,000 psi	50578375	50578511	50578651	50579398	50579495
15,000 psi	52189058	N/A	N/A	N/A	N/A

	LM	LBM	LM w/24V	LBM w/24V	Kit
15 psia	50579525	50579827	50579860	50579908	N/A
30 psia	50579533	50579835	50579878	50579916	N/A
100 psia	50579541	50579843	50579886	50579924	N/A
300 psia	50579819	50579851	50579894	50579935	N/A

50738631	CPG 1000 Data Log Software
----------	----------------------------

Stock items shown in blue print.

Mechanical Pressure > Calibration Equipment > WICP-L100, WICP-M500, WICP-H10K

## Type WICP-L100, WICP-M500, WICP-H10K

WIKA pneumatic and hydraulic test pumps are high performance hand operated pumps that allow the user to generate both pressure and vacuum for precise testing of pressure instrumentation including transmitters, pressure switches and pressure gauges



**WICP-L100**  
Pneumatic Pump Kit



**WICP-M500**  
Pneumatic Pump Kit  
(shown with CPG 1000)



**WICP-H10K**  
Pneumatic Pump Kit  
(shown with CPG 1000)

Type	RANGE	PART #
<b>WICP-L100</b>	-28" Hg to 100 psi	50578031
<b>WICP-M500</b>	-29" Hg to 600 psi	50578049
<b>WICP-H10K</b>	0 to 10,000 psi	50578057

Accessories	Part Number
<b>Pump Kits</b> <i>Kits include hard sided carrying case</i>	
WICP-L100 Kit - Low Pressure & Vacuum Pump (-28 in. Hg to 100 psi) with one test hose and one 1/8" FNPT port	50578065
WICP-M500 Kit - High Pressure & Vacuum Pump (-29 In Hg to 500 psi) with one test hose and one 1/4" FNPT port	50578284
WICP-H10K Kit - Hydraulic Pump (0 to 10,000 psi) with one test hose and one 1/4" FNPT port	50578073
<b>Fittings and Adapters for Pumps</b>	
Adapter 1/4 F BSP to 1/8 F NPT	50578081
Adapter 1/4 F NPT to 1/4 M BSP	50578090
Adapter 1/4 M NPT to 1/4 F BSP	50578103
Adapter 1/4 M NPT to 1/4 M NPT (Union)	50578111
Connector 1/4 M NPT to quick connect for high pressure hydraulic hose	50578120
Tee, Street, SS, 1/4 F NPT x 1/4 F NPT x 1/4 M NPT	50578138
Adapter 1/8 F NPT to 1/4 F NPT (Union)	50578146
Adapter 1/8 M NPT to 1/4 M BSP	50578154
Adapter 1/8 M NPT to 1/4 M NPT	50578162
Connector 1/8 M NPT to 1/8 quick connect tubing (nylon)	50578171
Hose, high pressure with quick connect fittings for WICP-H10K	6060100
PAK100 Accessory Kit for WICP-L100 includes carrying case, test hose and fittings	1010054
PAK500 Accessory Kit for WICP-M500 includes carrying case, test hose and fittings	1010055
PAK10K Accessory Kit for WICP-H10K includes carrying case, test hose and fittings	1010056

Stock items shown in blue print.



**NOTES:**

**MECHANICAL PRESSURE**