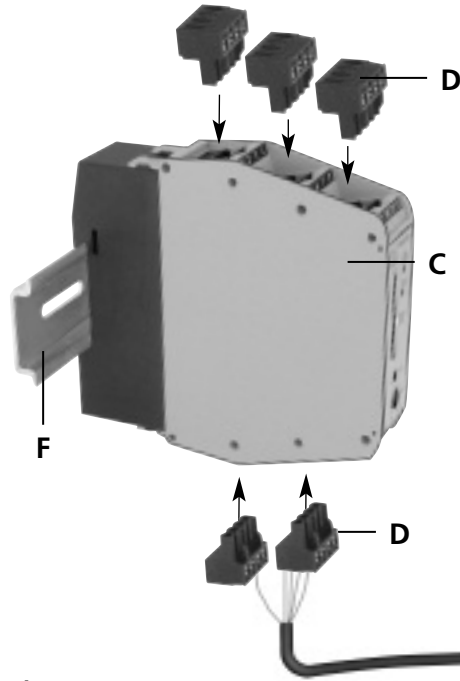


General Installation Instructions

Mechanical Flow Switch Retrofit Kit

Part No. U40100, US0035



Components:

- A. E40174 – 1/2" NPT adapter (for flow probe)
- B. SF6200 (U40100) or SF6201 (US0035)
- C. SN0150 – Flow control monitor
- D. E70231 – Combicon connectors (quantity 5)
- E. EVC075 – Micro DC cable, 10m length, PUR jacket
- F. F53003 – Din rail, 40mm length

Installation*

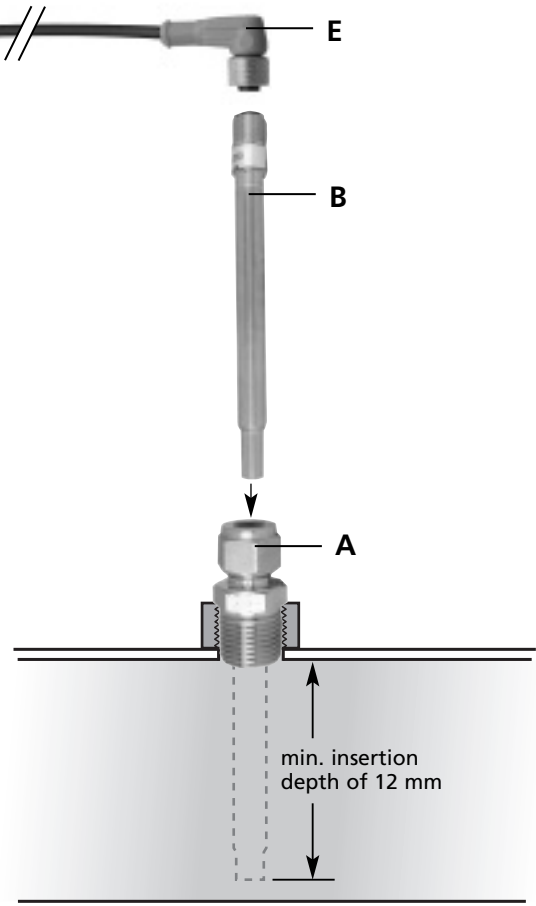
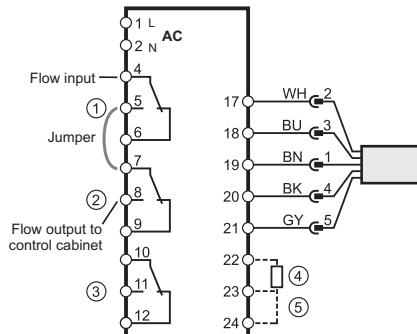
1. Install adapter (A) into pipe.
2. Mount flow probe (B) into adapter (A).
3. Install DIN rail (F) into control cabinet.
4. Install control monitor (C) onto DIN rail (F).
5. Connect cable (E) to flow probe (B), (hand tighten only).
6. Wire cable in combicon connectors (D) according to wiring diagram.
7. Wire relay outputs for flow, wire-break, and/or temperature monitoring, according to wiring diagram.

* Refer to individual installation instructions for each component for more detailed information.

To wire the flow monitoring and wire-break monitoring relay outputs in series, use the wiring diagram at right.

- ① Flow monitoring
- ② Wire break monitoring
- ③ Temperature monitoring
- ④ Power-on delay time
- ⑤ Selection liquid / gas

Temperature monitoring can also be incorporated using terminals 10, 11, and 12.



702620/03



ifm efector

782 Springdale Drive, Exton PA 19341
800-441-8246 · Fax 800-329-0436
www.ifm.com/us

Concerning Safety... ifm efector makes every effort to build a dependable product, but every product will eventually fail. Therefore, your equipment must be designed to prevent property damage and personal injury if our products fail. ifm efector flow switches are not designed to be used as stand-alone devices to protect or guard human life or limb.